

Photo 1: Internal view of Baby sensor with the lid removed



Photo 2: Internal view of Baby sensor with the battery removed



Photo 3: Internal view of Baby sensor with the battery and the board removed

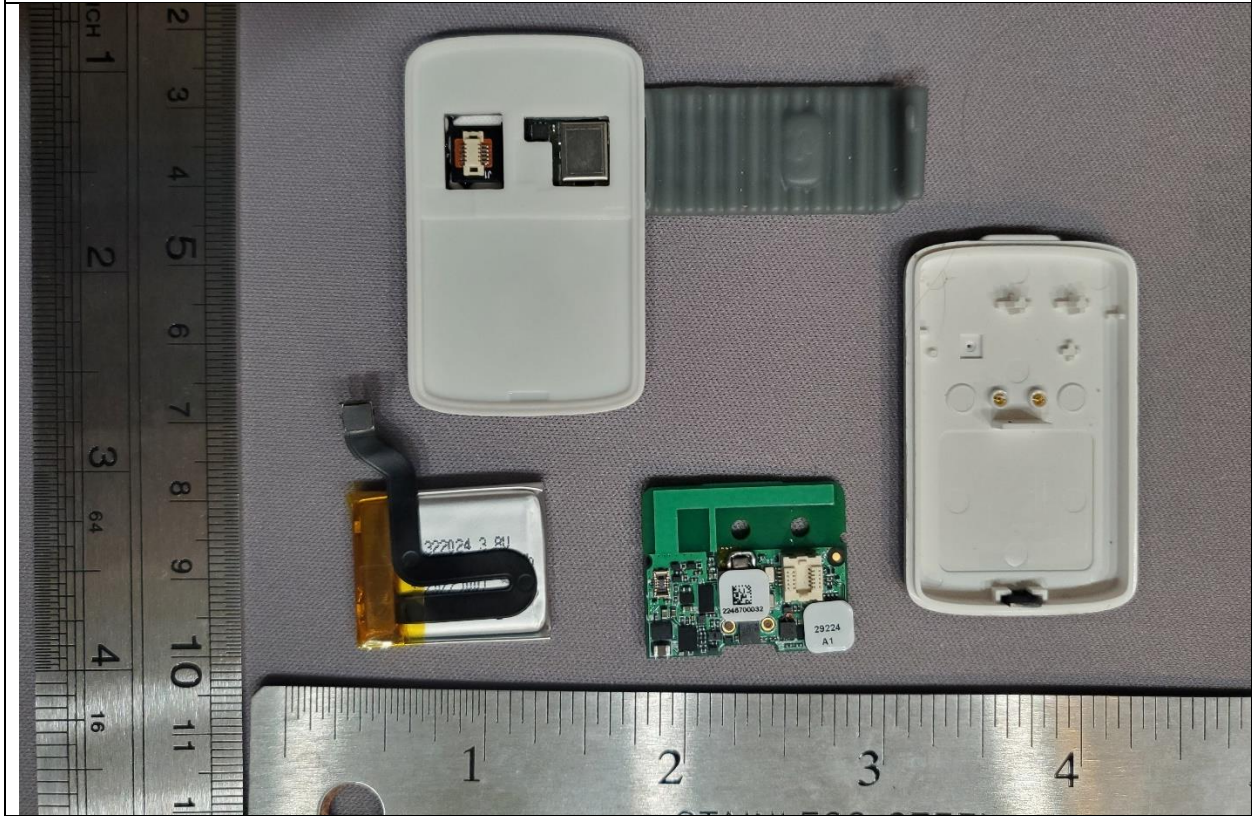
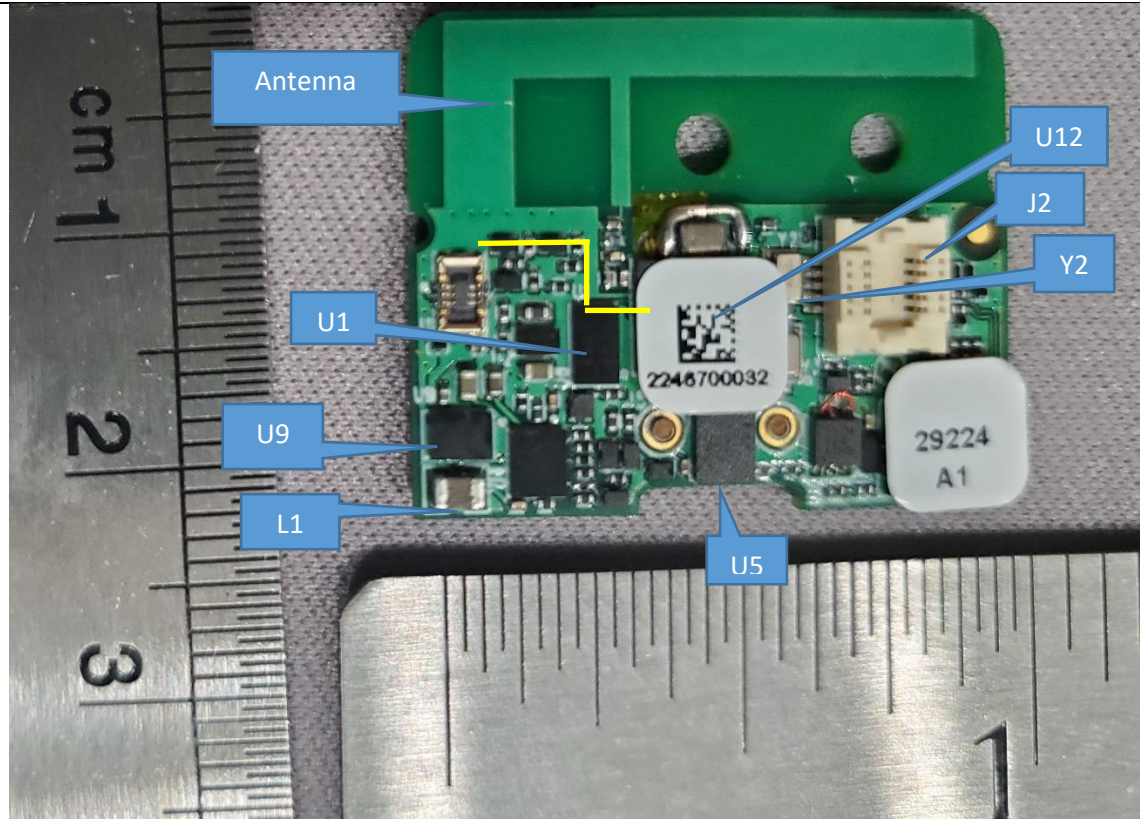


Photo 4: Front view of PCB p/n: 29224



RF path to the antenna indicated by yellow line

Photo 5: Assembly of front view of circuit board 29224 (p/n: 303870)

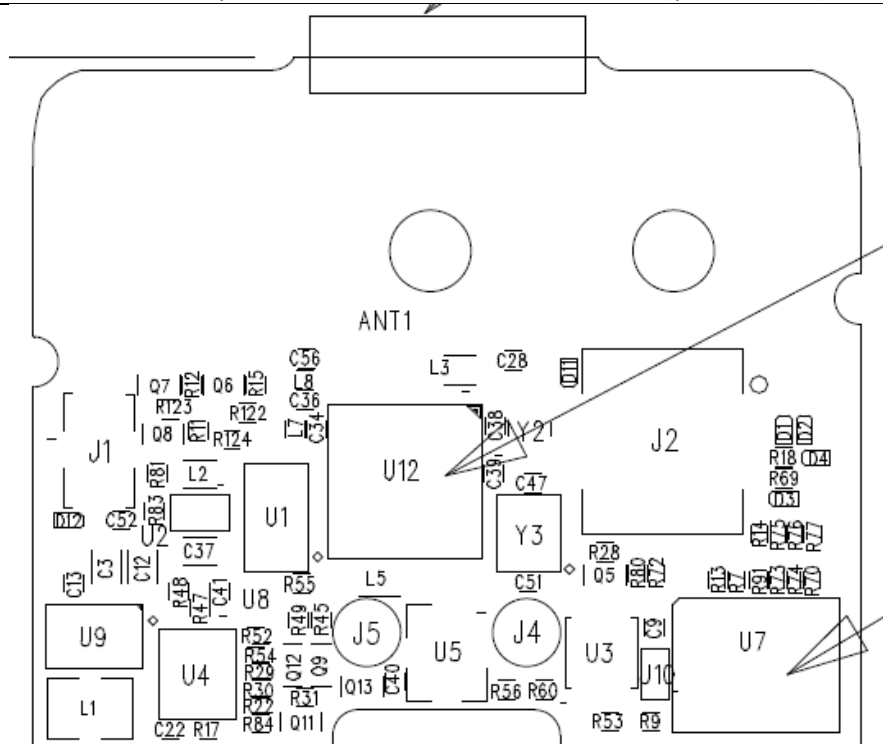




Photo 6: Back view of PCB p/n: 29224

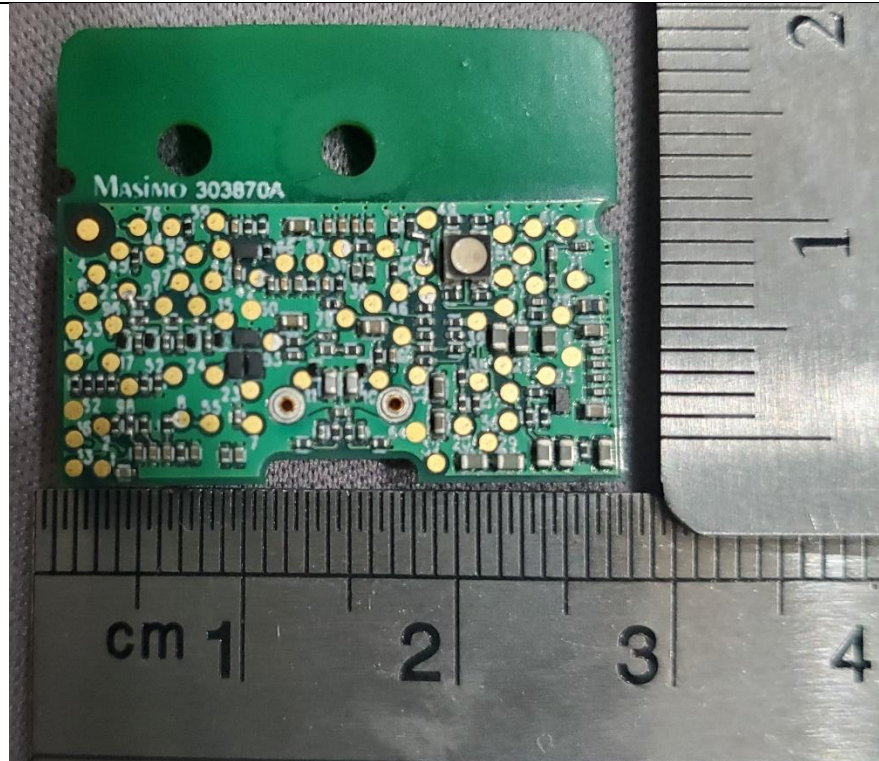


Photo 7: Assembly of back view of circuit board 29224 (p/n: 303870)

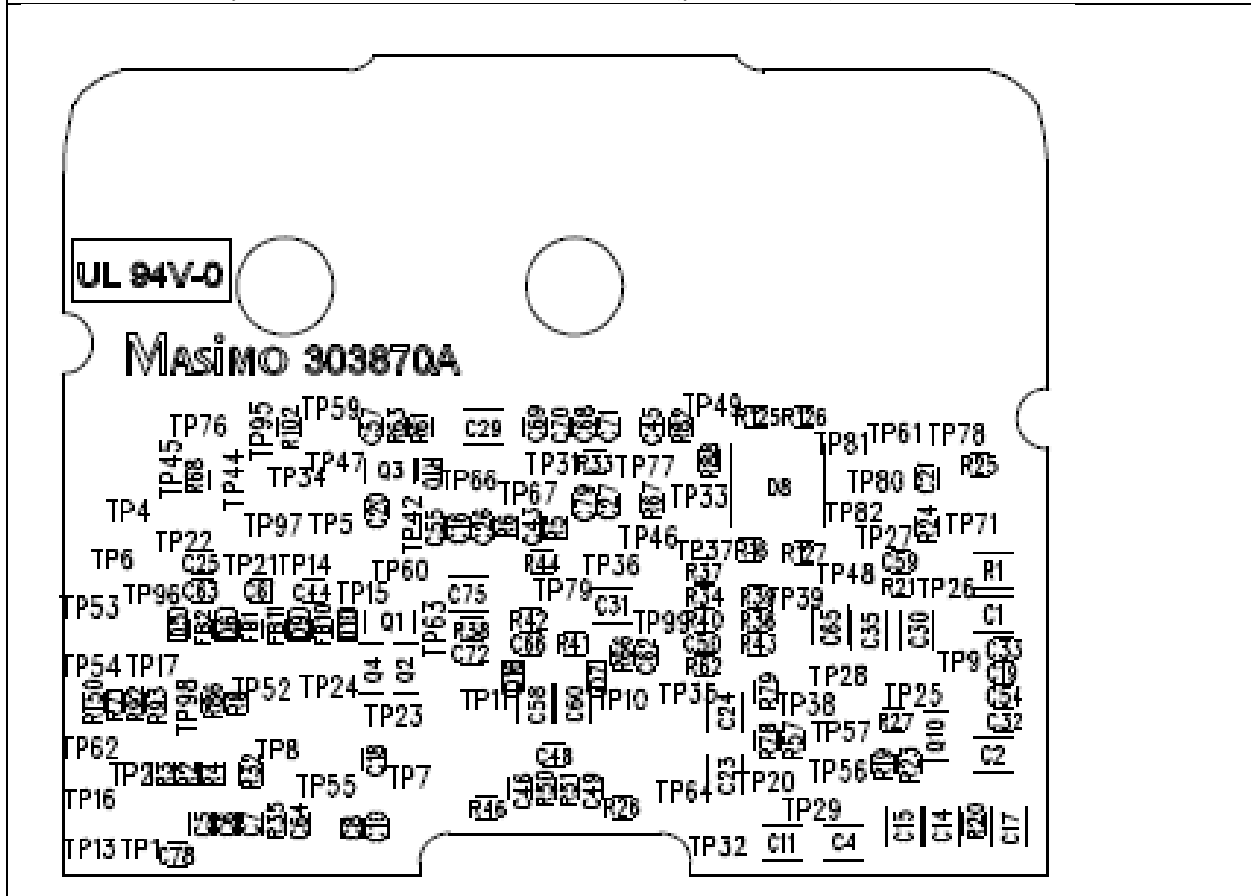


Photo 8: Front view of battery

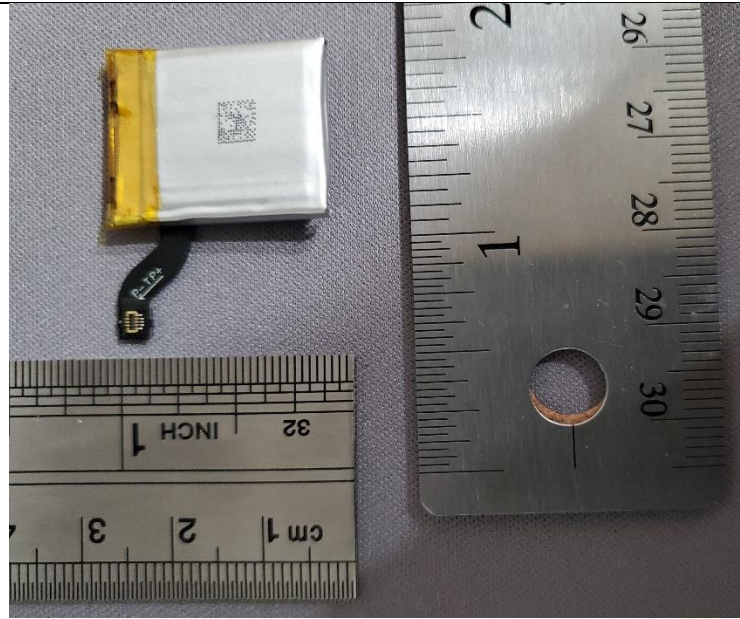


Photo 9: Back view of battery

