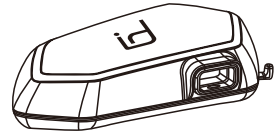
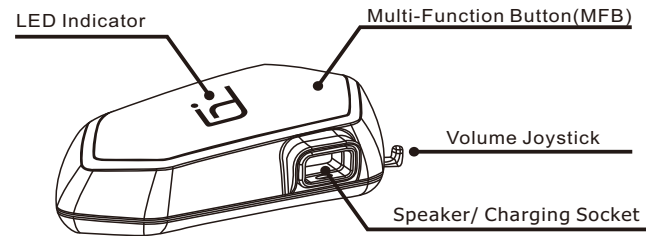




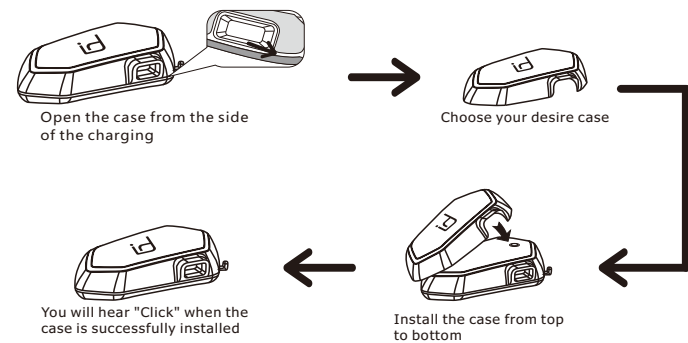
MOTO A1 User Manual



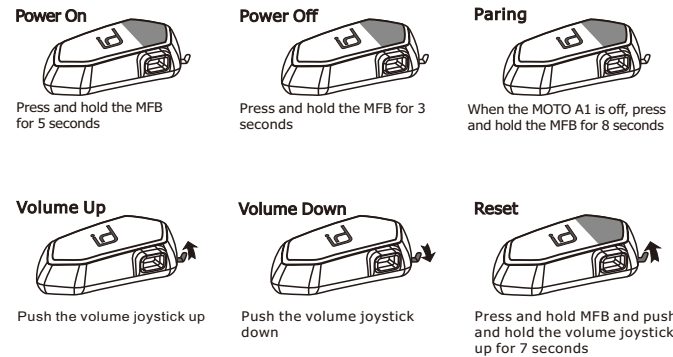
Introduction



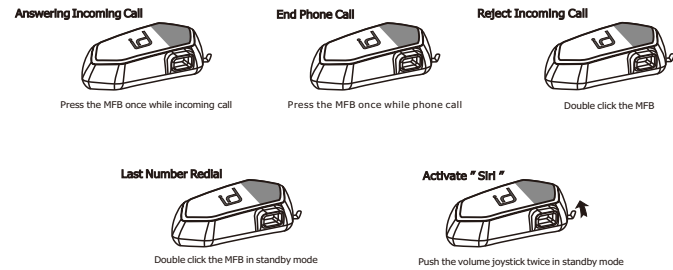
Changing Cases



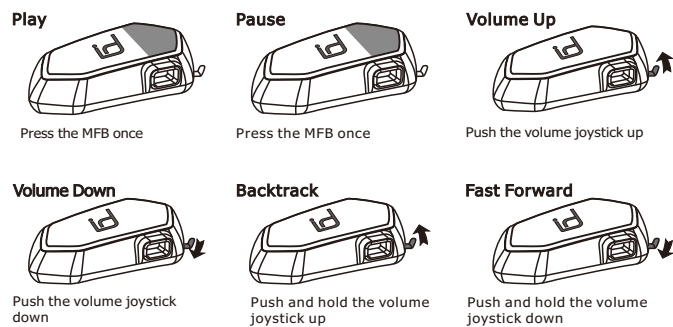
Basic Function



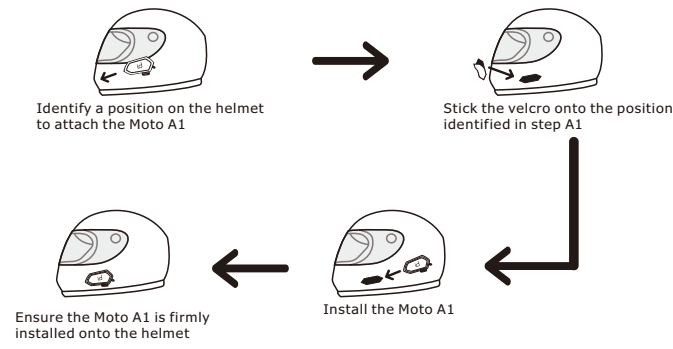
Phone Call Function



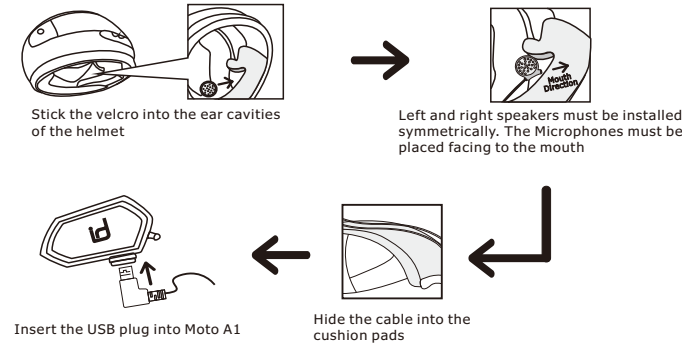
Music Function



Install Control Unit

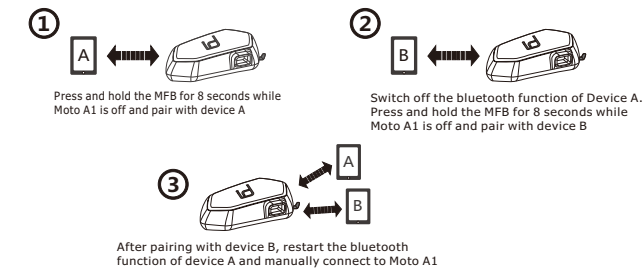


Connecting the Speakers and Moto A1



Simultaneously connect to 2 Bluetooth devices

Pairing



Remarks:
Moto A1 will automatically connect to only 1 bluetooth device. User has to manually connect Moto A1 to the second device if connecting to 2 bluetooth devices is in need.

FCC COMPLIANCE STATEMENT:

This device complies with part 15 of the FCC Rules. Operation is subject to the following two conditions:
(1) This device may not cause harmful interference, and
(2) this device must accept any interference received, including interference that may cause undesired operation.

Note: This equipment has been tested and found to comply with the limits for a Class B digital device, pursuant to Part 15 of the FCC Rules. These limits are designed to provide reasonable protection against harmful interference in a residential installation. This equipment generates, uses and can radiate radio frequency energy and, if not installed and used in accordance with the instructions, may cause harmful interference to radio communications.

Reorient or relocate the receiving antenna.
Increase the separation between the equipment and receiver.
Connect the equipment into an outlet on a circuit different from that to which the receiver is connected.
Consult the dealer or an experienced radio/TV technician for help.

Warning:
Changes or modifications to this unit not expressly approved by the part responsible for compliance could void the user's authority to operate the equipment.

FCC Radiation Exposure Statement
The device has been evaluated to meet general RF exposure requirement.

The device can be used in portable exposure condition without restriction.