

My Ear - MBH

MP3+ Bluetooth Headset

User Manual



Built-in MP3



A2DP & AVRCP



Mini SD Card



Changeable



Long Life



www.my-ear.com

MP3+Bluetooth Headset

My Ear

For more information, please click www.my-ear.com

Introduction

Thank you for purchasing MyEar-MBH. The headset comes with a built-in MP3 player and bluetooth v2.0 functions. The headset is ergonomic designed which reproduce wide range of frequency response and also allows you to make and receive phone calls while on the move or at office. You can connect the headset to a compatible phone that supports bluetooth wireless technology.

Please read this user manual carefully before you start using the headset and keep the headset with its accessories out of reach of small children.

Please check the package contents:

One MyEar-MBH



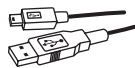
Four Ear Covers



One User Manual



One USB Cable



One Traveling Bag



One Charger (Optional)



MP3+Bluetooth Headset

My Ear

For more information, please click www.my-ear.com

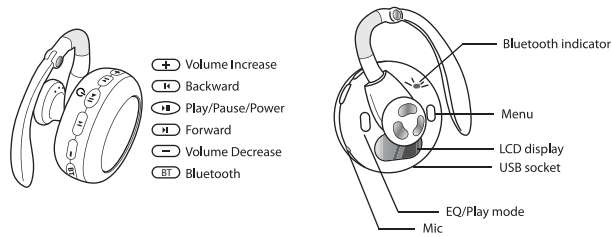
FCC Statement This device complies with Part 15 of the FCC Rules. Operation is subject to the following two conditions:

- (1) this device may not cause harmful interference, and
- (2) this device must accept any interference received, including interference that may cause undesired operation.

Changes or modifications not expressly approved by the party responsible for compliance could void the user's authority to operate the equipment.

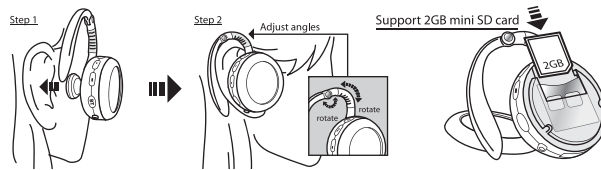
Locating the Controls

• MyEar-MBH Overview

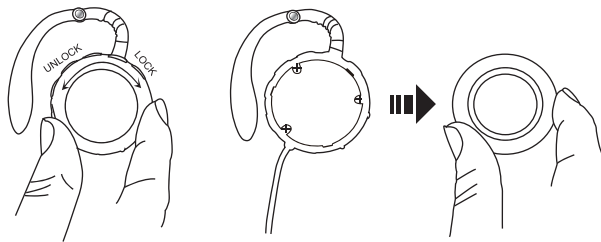


• Fitting MyEar-MBH

• Inserting Mini SD card



• Changing Ear Covers



MP3+Bluetooth Headset

Using Built-in MP3 Player

• Charging the Headset

MyEar-MBH comes with a built-in rechargeable battery. It is recommended that you fully charge the battery for 4 hours for the first use.

(a) Charging battery with an AC adapter

Step 1: Connect the charger to an AC wall socket.

Step 2: Connect the charger plug to the headset's charging socket.

Step 3: The marks in the power icon will roll while charging.

Step 4: The power icon on the screen will become full of marks when fully charged.

Step 5: Disconnect the charger from AC wall socket and the headset.

(b) Charging battery with your PC

Turn on your PC and connect the headset to it using the USB cable. The power icon on the screen will become full of marks when fully charged.

• Turning on/off the built-in MP3 player

- Turning on the Headset

Press and hold the [▶||] button until "MyEar" logo is shown on the screen.

- Turning off the Headset

Press and hold the [▶||] button until "MyEar" logo is disappear on the screen.

• Inserting/Removing Mini SD Card

- Inserting Mini SD Card

After turning off the headset, insert and slightly press the Mini SD card to the card slot.

- Removing Mini SD Card

After turning off the headset, press the mini SD card again to remove it.

● Copying file/folder (Using as a removable disk)

Step1: Turn on your PC and connect the headset to it using the USB cable.
 Step2: If it is properly connected, the screen will be shown as below.

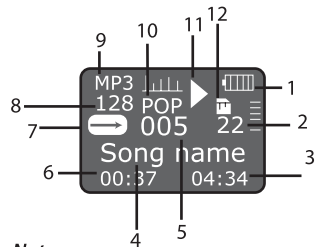


Step3: Selecting the file(s)/folder(s) in your PC, drag & drop it to the new removable driver which appears as the headset. You can rename/delete the file(s)/folder(s) as the same way you do in your PC.

Note:

- If it fails to connect, please try again after a few minutes.
- Do not insert or remove the Mini SD card while transferring data. It will avoid your data from damage.
- Disconnect the headset from your PC under the "Safety remove hardware" menu.

● LCD Display Overview



- | | |
|------------------|------------------|
| 1. Battery Life | 2. Volume |
| 3. Total Time | 4. Song Name |
| 5. Current Track | 6. Play Time |
| 7. Play Mode | 8. Bit Rate |
| 9. File Type | 10. EQ |
| 11. Play/Pause | 12. Mini SD card |

Note:

- If you are using internal memory, "12" will display icon [🔌]. If you are using external mini SD card, "12" will display icon [💿].

● Selecting Menu

1. Press the [Menu] button to display the main menu.



For more information, please click www.my-ear.com

2. Use [|◀] or [▶|] button to select the item in the main menu and press the [▶||] button to confirm your selection.
3. Press the [Menu] button to return the previous menu level.

• Listening to Music

1. Selecting the [🔍] icon (Navigator) in the main menu and press the [▶||] button to confirm your selection.
2. Press the [▶||] button to pause or play music.
3. Press and hold the [|◀] or [▶|] button to play fast-forward or fast-reverse.
4. Press [|◀] or [▶|] button to play previous or next song.

• Selecting Songs when playing music

1. Press and hold the [Menu] button for 2 seconds to display the files list.
2. Press [|◀] or [▶|] button to select songs in the list and press the [▶||] button to confirm your selection.
3. Press the [Menu] button to exit the menu.

• Playing Voice

1. Selecting the voice folder in the files list and press the [▶||] button to confirm your selection.
2. Press the [▶||] button to play or pause the voice files.
3. Press [|◀] or [▶|] button to play previous or next voice.

• Recording

1. Selecting the [🎤] icon (Record) in the main menu and press the [▶||] button to confirm your selection.
2. Press the [EQ] button to start recording and press the button again to stop it.
3. Press and hold the [EQ] button to save recording.

• EQ/Play Mode Settings

When playing music

1. Press the [EQ] button to change the EQ setting.

MP3+Bluetooth Headset

My Ear

For more information, please click www.my-ear.com

2. Press and hold the [EQ] button for 2 seconds to change the play mode setting. (Normal/Repeat one/Repeat all/Shuffle)

● Switching between built-in memory and external mini SD card

1. In the main menu, select the [⚙️] icon (Settings) and press the [▶||] button to confirm your selection.
2. Select the Setting item and choose your desired playing media. Press the [▶||] button to confirm your selection. The headset will switch to your desired media according to your selection.
3. Hot-Key: when pausing music and press the [EQ] button, the headset will switch the playing media.

Note:

- If the mini SD card is not installed into the headset, the headset will switch to internal memory automatically.

Pairing with Bluetooth Devices

● Turn on/off the Bluetooth Function

- Turn on the Bluetooth Function
Press and hold the [BT] button for 5 seconds until the LED flashes blue.

- Turn off the Bluetooth Function
Press and hold the [BT] button for 5 seconds until the LED lights off.

● Pairing MyEar-MBH with Bluetooth Devices

Before using MyEar-MBH with a Bluetooth enabled device, you have to pair it with that device first.

Step 1: Turn off Bluetooth function of MyEar-MBH.

Step 2: Press and hold the [BT] button until the LED flashes blue and red alternately.

MP3+Bluetooth Headset

My Ear

For more information, please click www.my-ear.com

MP3+Bluetooth Headset

Step 3: Activate the Bluetooth enable device's Bluetooth function and search for Bluetooth devices.

Step 4: Select MyEar-MBH in the list and enter the preprogrammed passkey "0000".

Step 5: The LED indicator will flash blue when pairing is complete.

Note:

- If failed to pair MyEar-MBH with the devices, please repeat the steps again.

- Although you will disconnect MyEar-MBH from the paired devices, you don't have to re-pair the paired devices for future usage. The devices will be reconnected after switching on MyEar-MBH again.

● Reset the headset

Press the [+] and the [|◀] buttons to reset the built-in MP3 player.

Press the [+] and the [|◀] buttons to reset the bluetooth function.

● Button Function for Bluetooth

Action	Key	Press time
Bluetooth function on	BT	Press & hold for 5 seconds
Bluetooth function off	BT	Press & hold for 5 seconds
Pairing (after function on)	BT	Press & hold for 5 seconds
Redialing last number	BT	Press & hold for 2 seconds
Rejecting a call	BT	Press & hold for 1 second
Answering a call	BT	Press
Ending a call	BT	Press
Play/Pause	▶	Press
Backward	◀	Press
Forward	▶	Press
Volume Increase	+	Press
Volume Decrease	-	Press

MP3+Bluetooth Headset

My Ear

For more information, please click www.my-ear.com

Other Information

• Specifications

- Audio Support: MP3, WMA
- EQ Settings: 7 Presets (Normal, Rock, Pop, Classic, Jazz, Live, Dance)
- Capacity: Built-in 256MB/ Support up to 2GB Mini SD Cards
- LCD display: 64 × 48 LCD display with backlight
- Connectivity: USB 2.0 full speed
- Recording Format: MP3
- Bluetooth Operation: Bluetooth v2.0 Class 2 (0-4dBm)
- Bluetooth Profile: Headset, Handsfree, A2DP, AVRCP
- Coverage Range*: 10 meters
- Battery: Built-in Li-ion battery (3.7V, Rechargeable)
- Battery Life**: Up to 12hrs of playtime or 120hrs in standby mode
- Language: 10 Presets (English, Traditional Chinese, Simplified Chinese, Japanese, Korean, French, German, Italian, Spanish, Portuguese)

*Performance may vary by devices

**Actual battery life will vary with use

• Safety Instructions

- ◆ Long time exposure to loud music may cause hearing damage. Please avoid using extreme volume when using this headset, especially for an extended period of time. It's advisable to the volume at moderate volume at all time.
- ◆ Observe all signs that require an electrical device or RF radio product to be switched off in the designated areas. Those could include hospitals, blasting areas and potentially explosive atmospheres.
- ◆ Do not use this headset while operating a motor vehicle, or in any other instances where the failure to hear outside sounds may represent a danger either to the users or to others.
- ◆ Turn off your headset before boarding any aircraft.

MP3+Bluetooth Headset

My Ear

For more information, please click www.my-ear.com

MP3+Bluetooth Headset

- ◆ Never allow children to play with your headset, as the small parts may cause choking hazard.
- ◆ Do not open or mutilate the built-in battery.

● Troubleshooting

If you failed to use the headset, Please try the following actions:

- ◆ Unable to connect the headset with Bluetooth enabled devices.
 - Make sure the headset is turned on and is properly charged.
 - Make sure the headset is paired with Bluetooth enabled devices.
 - Make sure Bluetooth enabled device's Bluetooth feature is activated.
 - Make sure the headset is within 10 meters of Bluetooth enabled devices, and there are no obstructions, such as wall in between.
- ◆ Unable to connect the paired devices.
 - You may have to deleted the paired devices in Bluetooth devices list in Bluetooth enabled devices and re-pairing the devices again.
- ◆ Cannot turn on the headset.
 - Check whether the battery is charged, charge the headset using the USB cable or AC adapter and try to turn it on again.
 - Reset the headset and try to turn it on again.
- ◆ Cannot charge the headset after connecting power.
 - Check whether the USB cable or AC adapter is properly connected.
- ◆ The LCD display turns off frequently.
 - In order to save power consumption, the LCD display will light off according to the backlight setting. Please set your desire backlight timing in Settings.
- ◆ No sound during playback.
 - Check whether the volume is set at "0" level.
 - Check the music file is corrupted or file type is correct.

◆ REMARKS:

SPECIFICATIONS AND DESIGN ARE SUBJECT TO CHANGE WITHOUT NOTICE FOR IMPROVEMENTS.

MP3+Bluetooth Headset

My Ear

For more information, please click www.my-ear.com

- **Important Notice:**

When both built-in MP3 player and bluetooth are on

The headset will play the music by built-in MP3 player and bluetooth connection will be in standby mode. If there is a phone call, the built-in MP3 player will be paused and you will hear a call signal. You can press the [BT] button to receive or reject the call. After you finish the phone call, the headset will switch back to the built-in MP3 player and resume the music.

When built-in MP3 player is off and bluetooth is on

The headset will be in standby mode. If you play music in your mobile phone and send music signal to the headset, you will be able to hear the music from the headset through A2DP profile. If there is a phone call, you can press the [BT] button to receive or reject the call. After you finish the phone call, the mobile will resume the music. You can also receive call even you are not playing music in your mobile.

Please note that it is not recommended to switch on the built-in MP3 player when you are listening to your mobile playing music through A2DP profile. The priority of audio channels are always given to BT connection.