

Bluetooth Stereo Headset

My Ear – BTH

User Manual

Table of Contents

1.	MyEar-BTH Overview -----	P. 2
2.	Charging your MyEar-BTH -----	P. 4
3.	Pairing with Bluetooth Devices -----	P. 5
4.	Using your MyEar-BTH -----	P. 7
5.	Troubleshooting -----	P. 9
6.	Product Specifications -----	P. 11
7.	Warnings -----	P. 12
8.	Warranty Card -----	P. 14

1. MyEar-BTH Overview

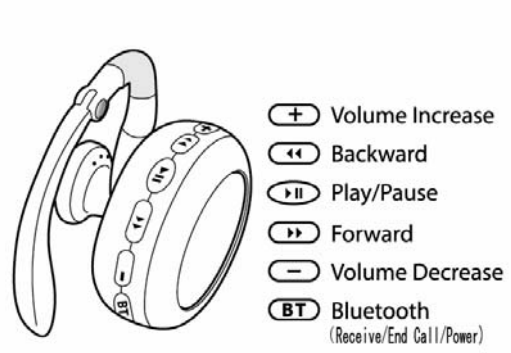


Fig. 1

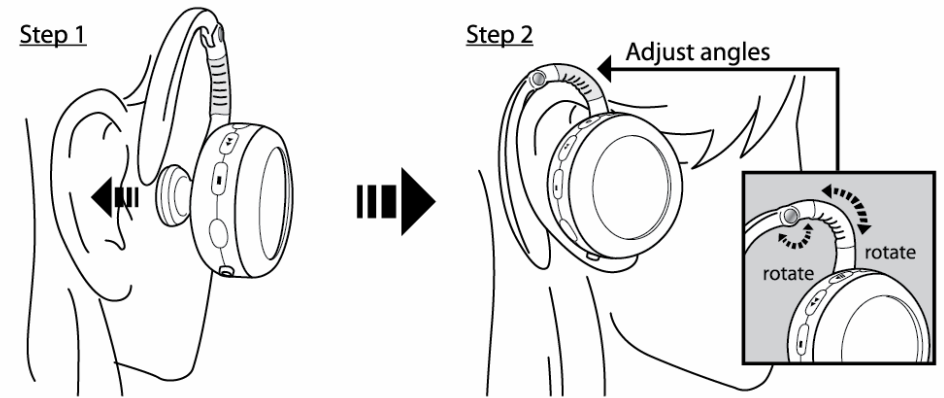
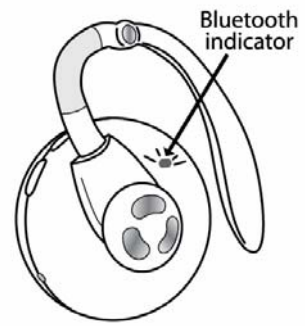


Fig. 2



Fig. 3

2. Charging Your Headset

MyEar-BTH comes with a built-in rechargeable battery. It is recommended that you fully charge the battery for 3hours for the first use.

How to charge;

- Step 1: Connect the charger to an AC wall socket.
- Step 2: Connect the charger plug to the headset's charging socket.
- Step 3: The LED indicator will be red whilst charging
- Step 4: The LED indicator will turn off
- Step 5: Disconnect the charger from AC wall socket and the headset.

3. Pairing Your Headset

Before using your MyEar-BTH with a Bluetooth enabled device, you have to pair it with that device first.

Step 1: Turn off your MyEar-BTH

Step 2: Press and hold the MFB until the LED flashes blue and red alternately.

Step 3: Activate the Bluetooth enable device's Bluetooth function and search for Bluetooth devices.

Step 4: Select MyEar-BTH in the list and enter the preprogrammed passkey "0000".

Step 5: The LED will flash blue when pairing is complete.

If you fail to pair your MyEar-BTH with the devices, please repeat Steps 1 to 7 again.

Although you will disconnect your MyEar-BTH from the paired devices, you don't need to re-pair the paired devices for future usage. The devices will be reconnected after switching on MyEar-BTH again.

4. Using Your MyEar-BTH

Action	Key	PressingTime
Power On	BT	Press and Hold for 3 Sec
Pairing (After Power On)	BT	Press and Hold for 5 Sec
Power Off	BT	Press and Hold for 5 Sec
Redialing Last Number	BT	Press and Hold for 2 Sec
Answering a Call	BT	Press and don't Hold
Ending a Call	BT	Press and don't Hold
Rejecting a Call	BT	Press and Hold for 1 Sec
Play/Pause	▶	Press and don't Hold
Backward Search	◀◀	Press and don't Hold
Forward Search	▶▶	Press and don't Hold
Volume Up	+	Press and don't Hold
Volume Down	-	Press and don't Hold

When listening to Stereo Audio from A2DP ready devices, you may have to choose the MyEar-BTH as the output device. Otherwise, the sound signal may be sent to the original built-in speakers.

5. Troubleshooting

a) Unable to connect your MyEar-BTH with the Bluetooth enabled devices

Make sure your MyEar-BTH is charged.

Make sure your MyEar-BTH is turned on.

Make sure your MyEar-BTH is paired with the Bluetooth enabled devices.

Make sure the Bluetooth enabled devices' Bluetooth feature is activated.

Make sure your MyEar-BTH and the Bluetooth enabled devices are in 10 meters range, with no obstructions in between.

b) Unable to connect the paired devices

You may have to delete the paired devices in the Bluetooth device list in your Bluetooth enabled devices and pairing the devices again.

6. Product Specifications

Bluetooth Stereo Headset	MyEar – BTH
Bluetooth Operation	Bluetooth v1.2 Class 2 (0~4dBm)
Coverage Range*	10meters
Bluetooth Profile	Headset Handsfree Advanced Audio Distribution Profile (A2DP) Audio Video Remote Control Profile (AVRCP)
Frequency Range	2.4GHz
Battery	Built-in Li-ion battery (Rechargeable)
Battery Life**	10hrs of talk time or 15days in standby mode

* Performance may vary by devices

** Actual battery life will vary with use

7. Warnings:

- Long term exposure to loud music may cause hearing damage. Please avoid using extreme volume when using this headset, especially for an extended period of time. It is advisable to the volume at moderate volume at all times.
- Do not use this headset while operating a motor vehicle, or in any other instances where the failure to hear outside sounds may represent a danger either to the users or to others.
- To avoid electromagnetic interference and/or compatibility conflicts, turn off your device in any facility where posted notices instruct you to do so. Hospitals

or health care facilities may be using equipment that is sensitive to external RF energy.

- Turn your Bluetooth headset off before boarding any aircraft.
- Do not allow children to play with your headset, as the small parts may cause choking hazard.
- Changes or modifications not expressly approved by the party responsible for compliance could void the user's authority to operate the equipment

8. Warranty Card

Product Serial Number	Mfg. Ref. #
Date of Purchase (dd/mm/yyyy)	Warranty valid unit (dd/mm/yyyy)
Distributor's endorsement	Remarks:

Limited Warranty

Fung Shing Co. Ltd. (FSC) warrants this product to be free from defects in materials and workmanship to the original purchaser for a period of one year from the original purchase date. FSC's responsibility with regard to this limited warranty shall be limited solely to the repair or replacement, at its own opinion, of any product which fails during normal use. This warranty does not extend to damage or failure, which results from misuse, neglect, accident, alteration, abuse, improper installation or improper maintenance. To exercise this limited warranty, send the product along with proof of purchase (receipt), your name and address.