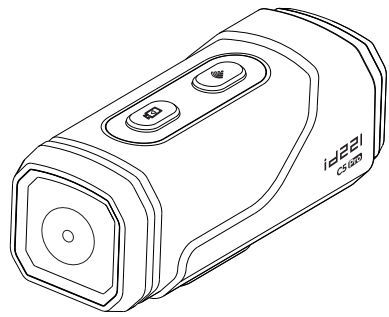
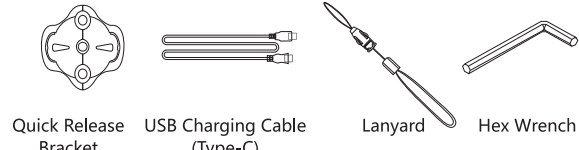
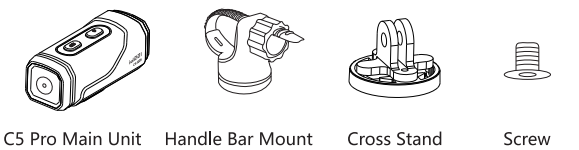


# id221

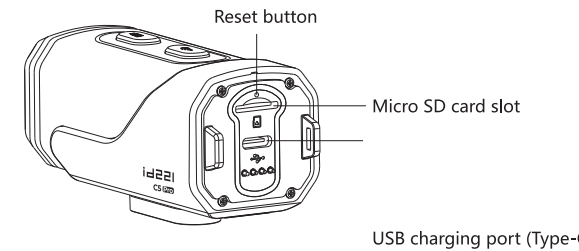
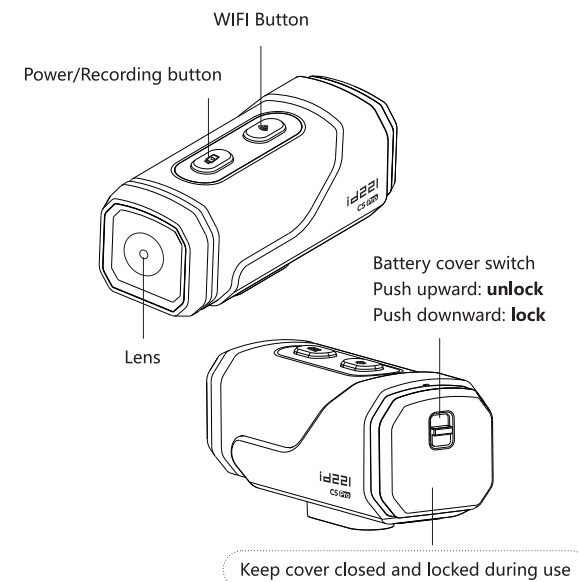
## ACTION C5 Pro User Manual



### Package contents



### Introduction



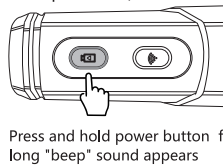
Remarks: please insert Micro SD card before use

**Note** When using the SD card for the first time, it needs to be formatted once in the (SD card formatting) in the APP settings.

**Memory card** It is recommended to choose a memory card with the following specifications:  
UHS speed: above U3;  
write speed: above 30MB/S;  
read speed: above 30MB/S.

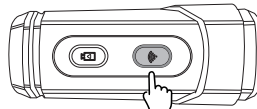
### Basic Functions

#### Power on



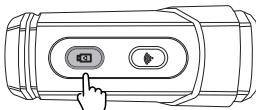
(Automatic start recording after power on)

#### Reset WIFI



Long press WIFI button for 15s in power-on state, "beep beep" sound appear

#### Power off



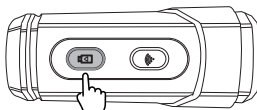
Press and hold power button for 5s, "beep" "beep beep" "beep" sound appear

#### Reset button



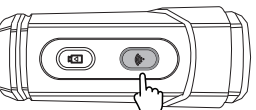
Short press reset button by using a pin

#### Start/pause recording



Short press recording button once, "beep" sound appear

#### Turn On/Off WIFI



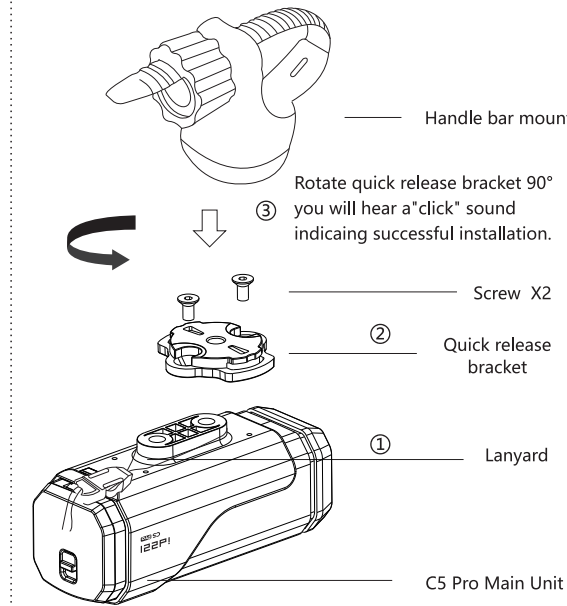
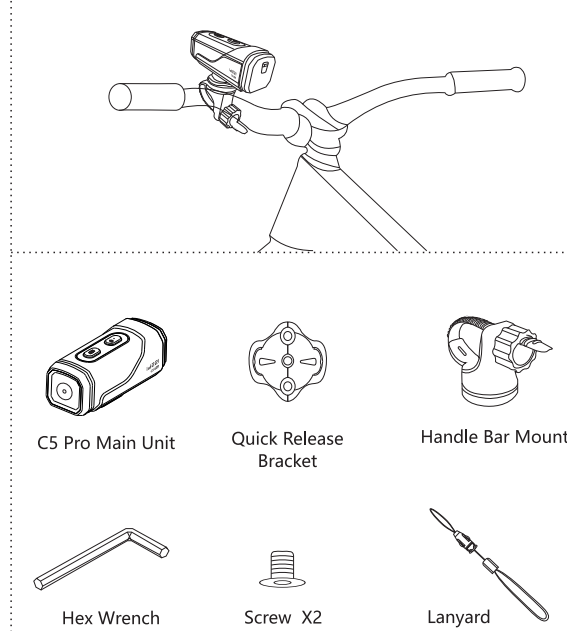
Long press WIFI button for 2s, "beep" sound appear

**Remarks:** If the device continuously emits a 'beep beep' alarm sound after powering on, it indicates that the SD card cannot be detected, and it will automatically shut down after 3 minutes.  
**Reset WIFI:** Device name and password will be reset to factory default.  
**Reset Button:** Reset the machine to default status when the system crash

### Installation Guide

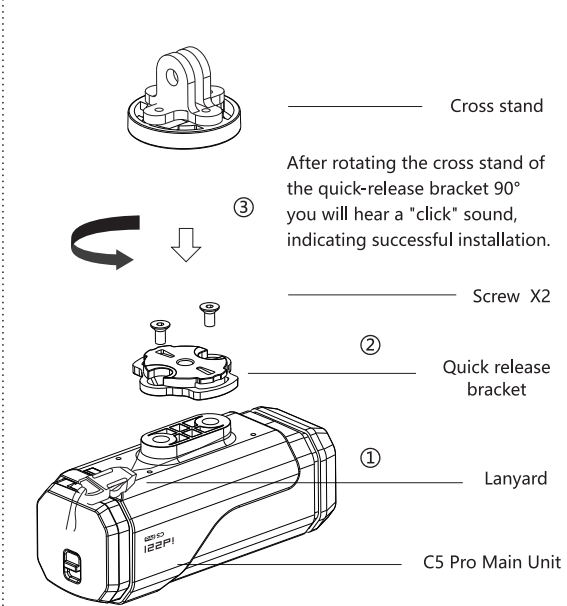
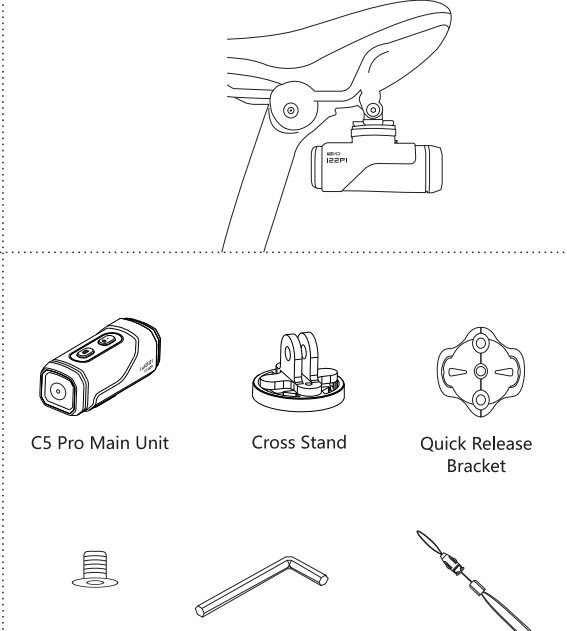
#### On Handlebar

##### Installation Diagram



#### On seat back

##### Installation Diagram



### Light Status

Function Status	Light Status	Alert Sounds
Power On	Green light flashes	"Beep beep" sound twice
Power Off	Light off	"Beep" "beep beep" "beep beep" "beep" sound
Start Recording	Green light flashes	"Beep" sound
Pause Recording	Solid green light	"Beep" sound
Turn On WIFI	WIFI light flashes green	"Beep" sound
Off WIFI	WIFI Button light off	"Beep" sound
No SD Card	Solid red light	It will emit a 'beep beep' sound and automatically shut down after 3 minutes.
SD Card Error	Solid red light	It will emit a 'beep beep' sound and automatically shut down after 120 minutes
Reset WIFI	Green + red flash once	"Beep beep" sound twice
Low Battery	Red light flashes rapidly	Long "beep" every 3 minutes
Charging	Solid red light	/
Fully Charged	Blue light on	/

### Warnings

The new firmware can be obtained at the place of purchase or downloaded from the official website [www.id221.com](http://www.id221.com).

#### 1. New firmware upgrade

- Copy the obtained new firmware into the SD card.
- When the host is turned off, insert the SD card into the host and then turn it on to start the upgrade.
- The upgrade takes about 40 seconds. Please wait patiently.
- After the upgrade is completed, the device will automatically shut down.

**During upgrade: The WIFI key has a fast flashing green light. After upgrade is completed: The light is off.**

#### 2. EIS horizontal calibration

- Put the obtained EIS horizontal calibration file (EISCAL.txt) into the SD card.
- When the host is turned off, insert the SD card into the host.
- Place the machine on a horizontal desktop and keep it still for one minute.
- Turn on the device at the same time (at this time, pay attention to keeping the machine still and do not move it by hand).
- Wait for about 30 seconds for the machine to complete calibration. Do not move the machine during the calibration process. The calibration is completed when the light stops flashing.

**During upgrade: The power-on key has a fast flashing green light. After upgrade is completed: The light is off.**

**Note:** During the upgrade process, the device cannot be powered off/ cannot be manually shut down (It needs to be in a fully charged state).

### App Installation and Connection

#### 1 Download APP

##### Note

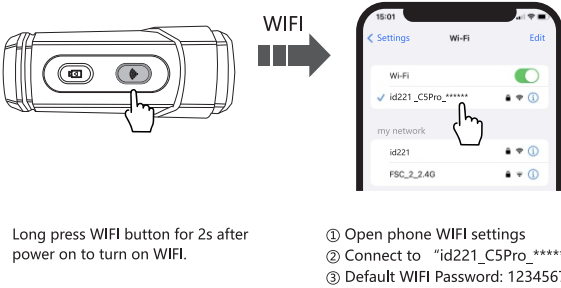
User must connect idcam for updating the machine time on first use.

Open your mobile device and search for [idGoLive] / Scan the QR code below to download the app, and you must authorize location services and camera access.



#### 2 Connect Phone to Device WIFI

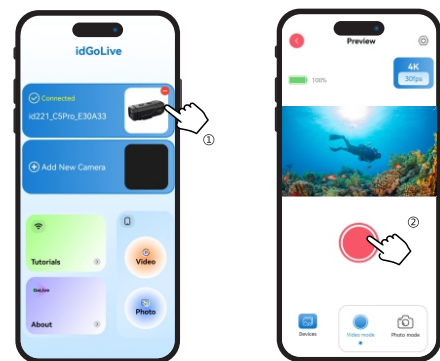
Manually turn on WIFI after power on the machine



Long press WIFI button for 2s after power on to turn on WIFI.

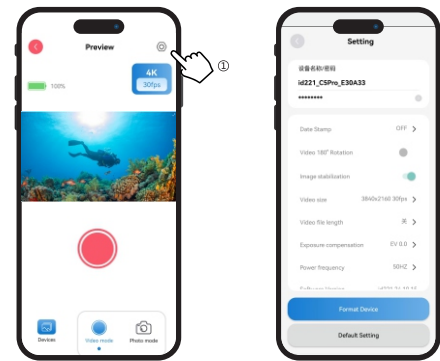
- Open phone WIFI settings
- Connect to "id221\_C5Pro\_\*\*\*\*\*"
- Default WIFI Password: 12345678

#### 3 Live View



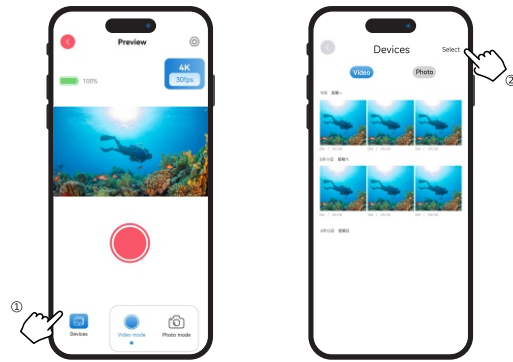
- Click "specific button" to view real-time video.
- Click "Start Recording".

#### 4 Settings



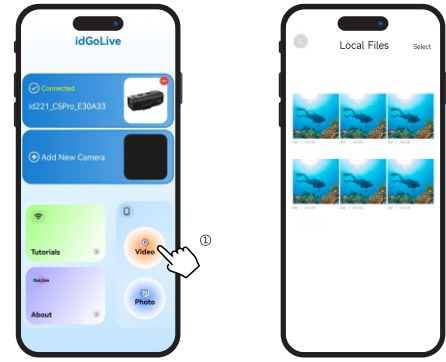
- In recording mode: Click "Settings" in the upper right corner to set various parameters.

#### 5 View Recorded Videos/images



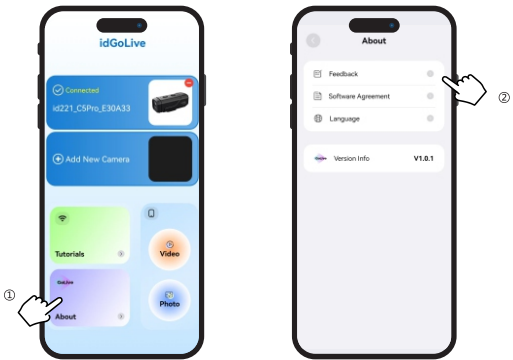
- Tap "Device Files" to view recorded videos/images
- Tap "Select" to download files

#### 6 View Downloaded Videos/images



- Click "Video/Album". You can view the downloaded files, and they will be synchronized to the mobile phone album at the same time.

#### 7 Contact Us



- Tap "About App" then "Feedback"
- Your valuable feedback helps us continue improving our quality and service. Thank you.

##### Note

When the recording duration is set to OFF: After the memory card is full, the recording will automatically pause, and will power off after 3 minutes.

When it is set to a value other than OFF: After the SD card is full, it will normally overwrite in a circular manner.

### Specifications

Model	ACTION C5 Pro	Charging Voltage	5V DC
Video Resolution	4K/30fps (Upscaling) 2K/30fps 1080P/30fps/60fps	Charging Current	2.6A
Lens FOV	120°/F1.8 Aperture	Operating Voltage	4.35V
Waterproof Rating	IP56	Operating Current	0.5A
Record Duration	Approx. 9 hours	Operating Temperature	-20°C to 45°C (-4°F to 113°F)
WIFI Signal	5 GHz	Compatibility	Motorcycle/E-bike/Bicycle
WIFI Name	id221_C5Pro_*****		
Default Password	12345678	5G	Frequency Bands 5500-5700 MHz 5510-5670 MHz 5530,5610 MHz
Record Format	MP4,16:9	5.8G	Power 15.07dBm
Max Memory	512GB		5745MHz-5825 MHz 5755-5795 MHz 5775MHz
Lithium Battery	2840mAh/3.8V		12.86dBm
Charging Time	Approx. 100 mins		for EU

#### Please refer to the following instructions for relevant precautions regarding this product:

- Video recorder operating temperature: -20°C to 45°C (-4°F to 113°F).
- Do not clean with aggressive chemical solvents. It is recommended to wipe with wet tissue or soft cloth.
- Please protect the environment and hygiene by not arbitrarily discarding the product. Do not throw the product into fire to avoid explosion.
- Do not disassemble the casing or attempt to repair it yourself. If this product malfunctions, please contact the official customer service of the seller for assistance.
- Please strictly comply with local laws and regulations to avoid infringing upon the rights of third parties, including but not limited to the right to publication, intellectual property rights, data rights, or other privacy rights. You must not use this product for purposes involving weapons of mass destruction, biological weapons, nuclear explosions, unsafe nuclear energy utilization, or human rights violations.

- replacement of a battery with an incorrect type that can defeat a safeguard (for example, in the case of some lithium battery types);
- disposal of a battery into fire or a hot oven, or mechanically crushing or cutting, of a battery, that can result in an explosion;
- leaving a battery in an extremely high temperature surrounding environment that can result in an explosion or the leakage of flammable liquid or gas; and
- a battery subjected to extremely low air pressure that may result in an explosion or the leakage of flammable liquid or gas.

FCC Compliance Statements This device complies with Part 15 of the FCC Rules. Operation is subject to the following two conditions:

- (1) this device may not cause harmful interference, and
  - (2) this device must accept any interference received, including interference that may cause undesired operation.
- Note: This equipment has been tested and found to comply with the limits for a Class B digital device, pursuant to Part 15 of the FCC Rules. These limits are designed to provide reasonable protection against harmful interference in a residential installation. This equipment generates, uses, and can radiate radio frequency energy and, if not installed and used in accordance with the instructions, may cause harmful interference to radio communications. However, there is no guarantee that interference will not occur in a particular installation. If this equipment does cause harmful interference to radio or television reception, which can be determined by turning the equipment off and on, the user is encouraged to try to correct the interference by one or more of the following measures:-- Reorient or relocate the receiving antenna.-- Increase the separation between the equipment and receiver. -- Connect the equipment into an outlet on a circuit different from that to which the receiver is connected.-- Consult the dealer or an experienced radio/TV technician for help. Caution: Changes or modifications not expressly approved by the party responsible for compliance could void the user's authority to operate the equipment.

This equipment complies with Directive 2014/53/EU radiation exposure limits set forth for an uncontrolled environment. End user must follow the specific operating instructions for satisfying RF exposure compliance. This transmitter must not be co-located or operating in conjunction with any other antenna or transmitter. This equipment should be installed and operated with minimum distance 5mm between the radiator and your body. This equipment should be installed and operated with minimum distance 0mm between the radiator and your limbs.

The portable device is designed to meet the requirements for exposure to radio waves established by European Union market(France). These requirements set a SAR limit of 4 W/kg averaged per ten gram of tissue. The highest SAR value 1.02W/kg reported under this standard during product certification for use when properly worn on the limbs. The portable device is designed to meet the requirements for exposure to radio waves established by European Union market(France). These requirements set a SAR limit of 2W/kg averaged over ten gram of tissue. The highest SAR value 0.44W/kg reported under this standard during product certification for use when properly worn on the body.

The portable device is designed to meet the requirements for exposure to radio waves established by the Federal Communications Commission (USA). These requirements set a SAR limit of 4 W/kg averaged per ten gram of tissue. The highest SAR value reported under this standard during product certification for use when properly worn on the limbs. The portable device is designed to meet the requirements for exposure to radio waves established by the Federal Communications Commission (USA). These requirements set a SAR limit of 1.6W/kg averaged over one gram of tissue. The highest SAR value reported under this standard during product certification for use when properly worn on the body.

FCC RF exposure statement This equipment complies with FCC radiation exposure limits set forth for an uncontrolled environment. End user must follow the specific operating instructions for satisfying RF exposure compliance. This transmitter must not be co-located or operating in conjunction with any other antenna or transmitter. This equipment should be installed and operated with minimum distance 5mm between the radiator and your body. This equipment should be installed and operated with minimum distance 0mm between the radiator and your limbs.

FCC ID: VJ2209119C501 This device complies with Part 15 of the FCC Rules. Operation is subject to the following two conditions:

- (1) this device may not cause harmful interference, and
- (2) this device must accept any interference received, including interference that may cause undesired operation.

Contain safety information and contain information needed to operate product in accordance with its intended use.