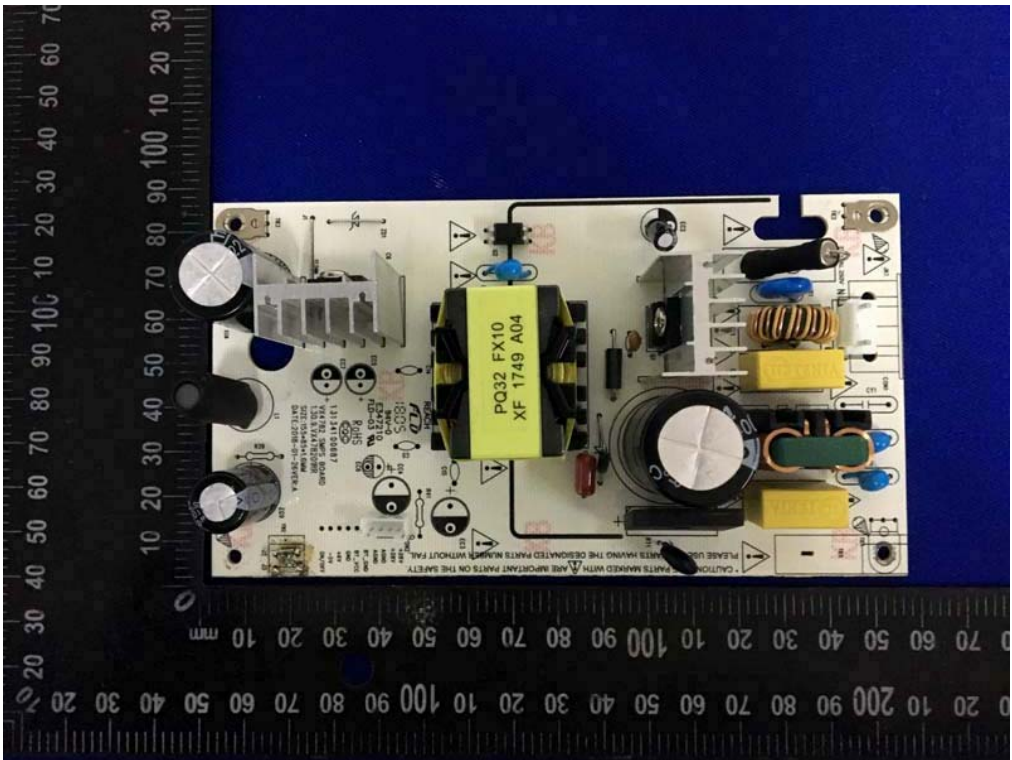
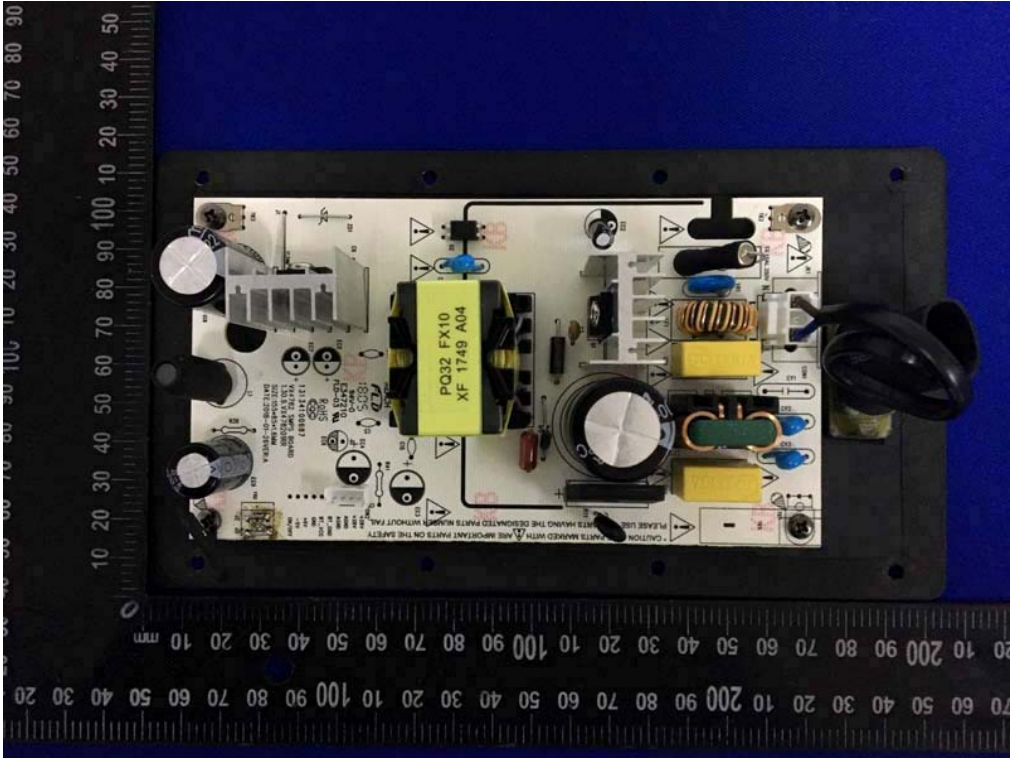


Internal Photos

M/N: SP491

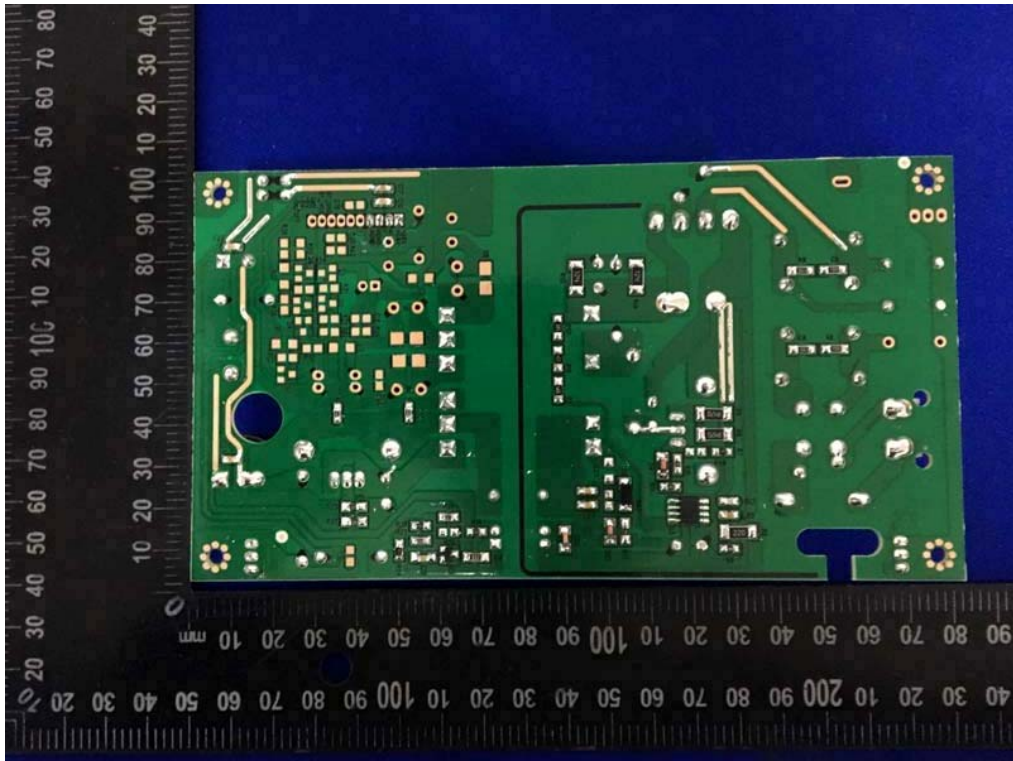


Internal Photos
M/N: SP491



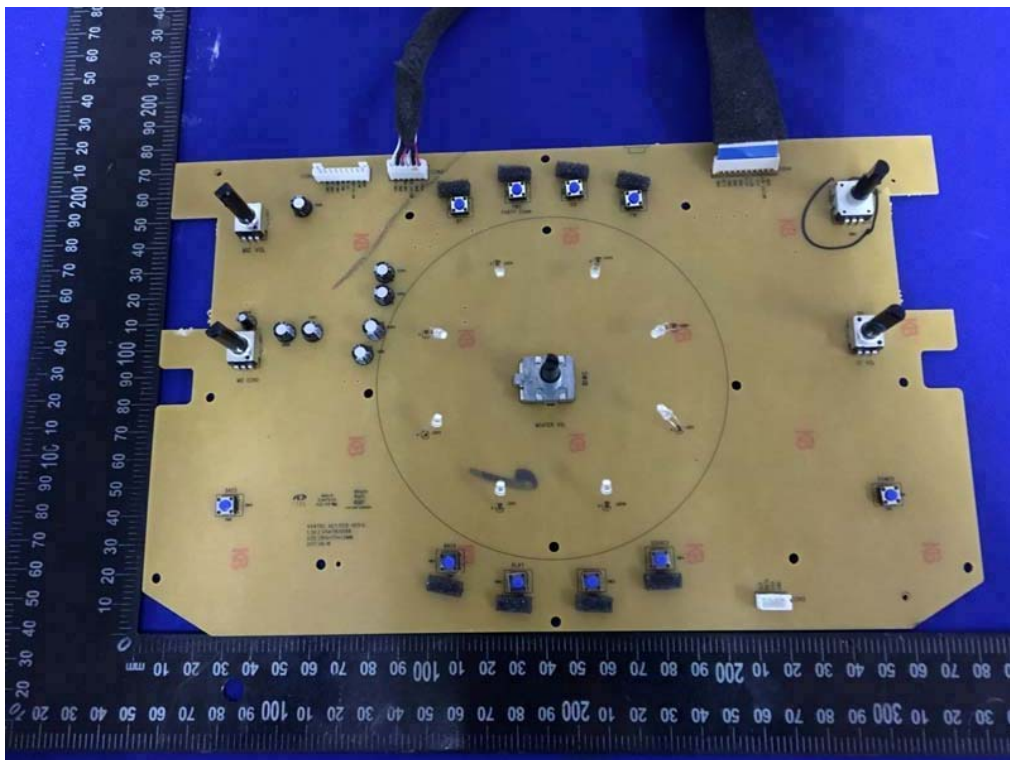
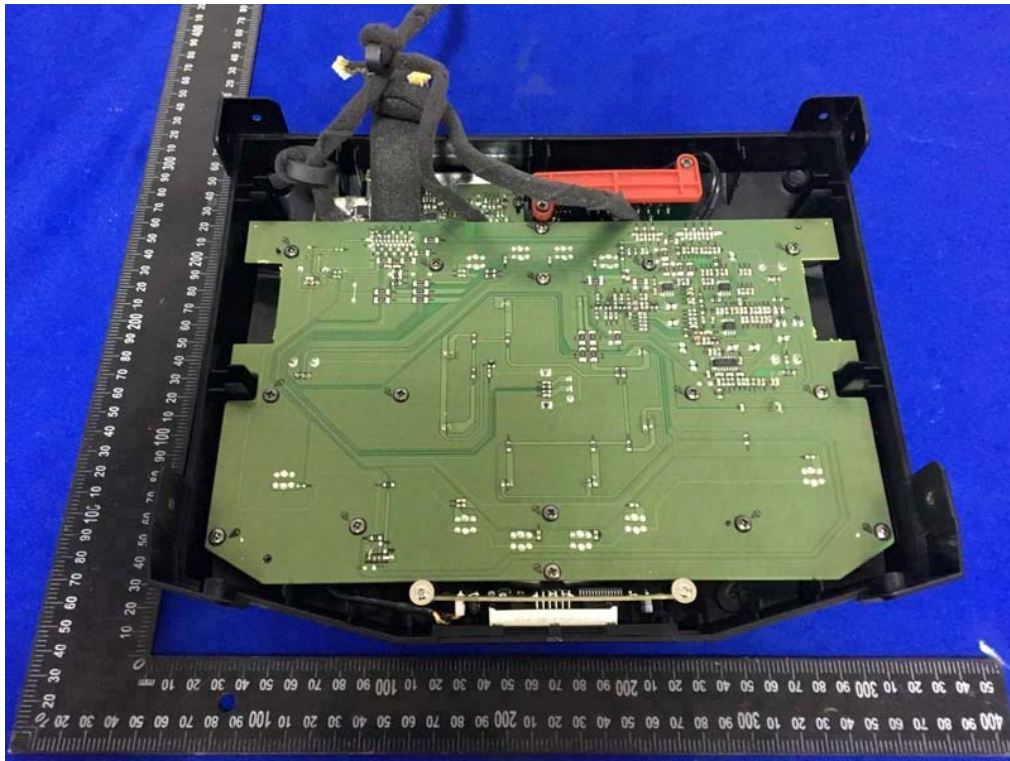
Internal Photos

M/N: SP491



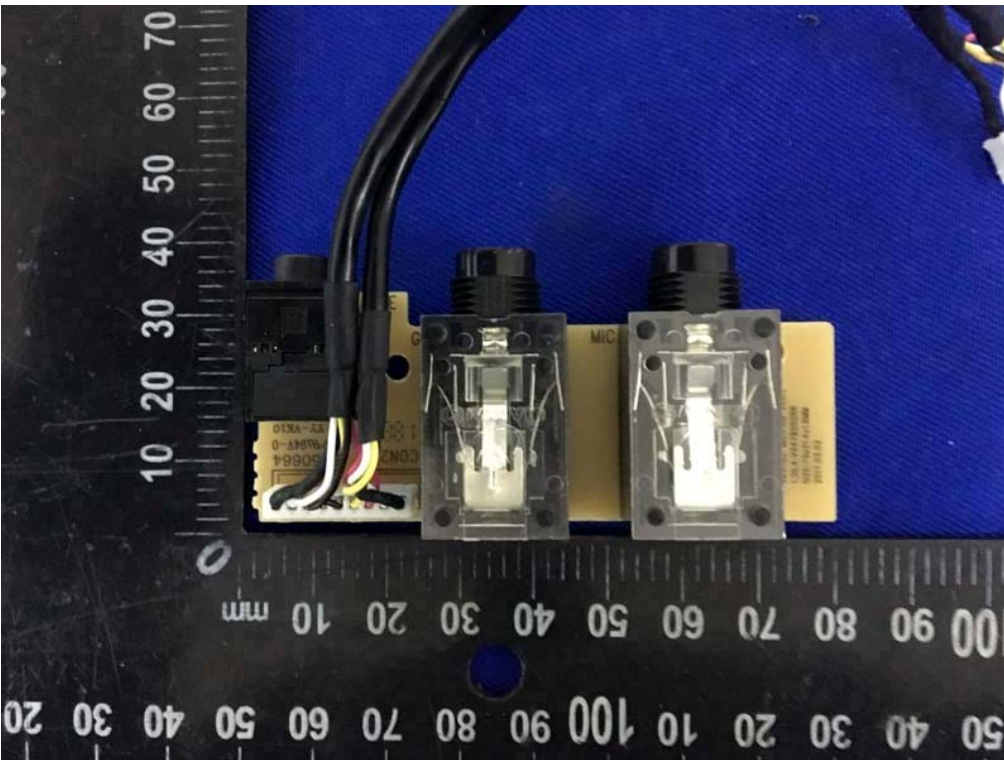
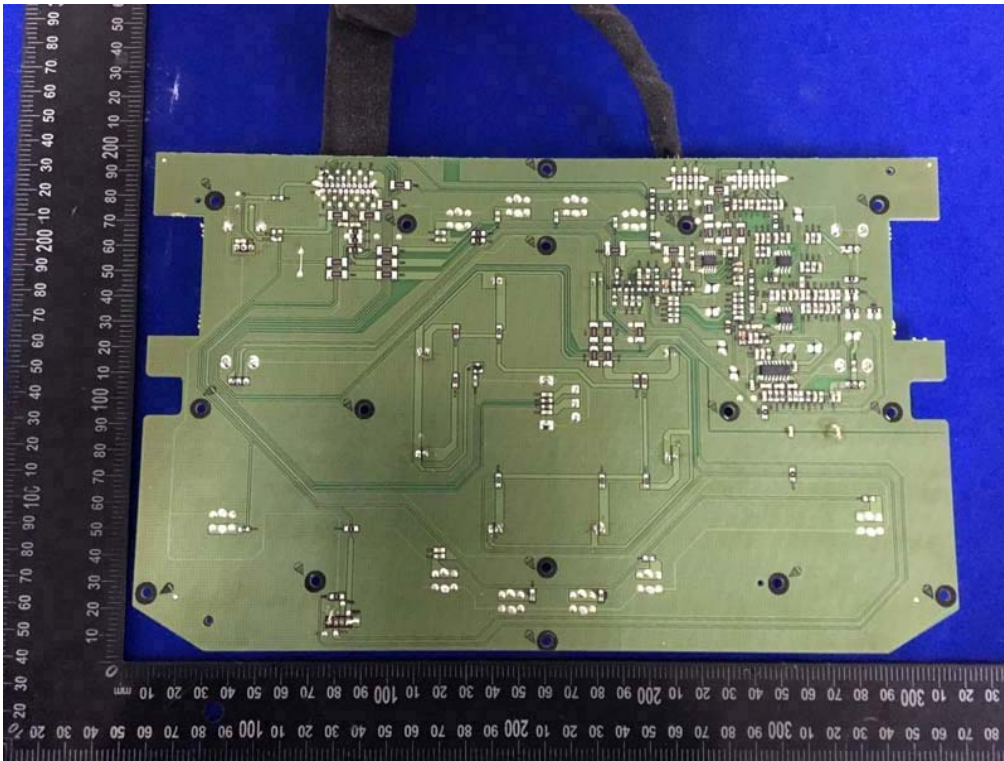
Internal Photos

M/N: SP491



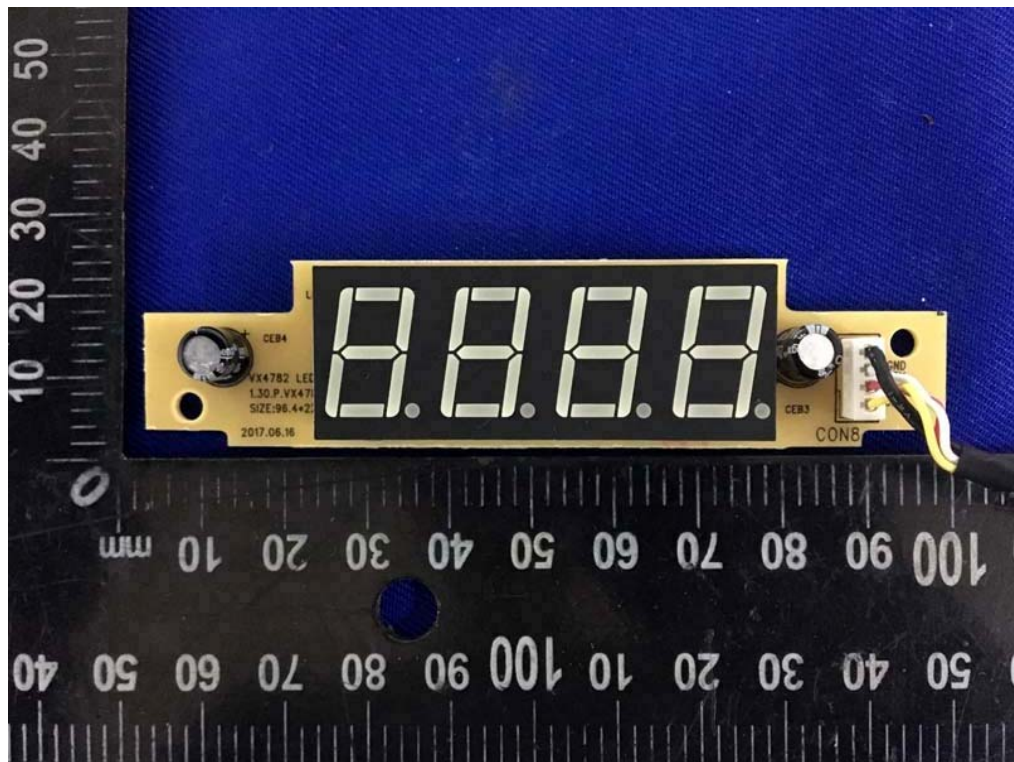
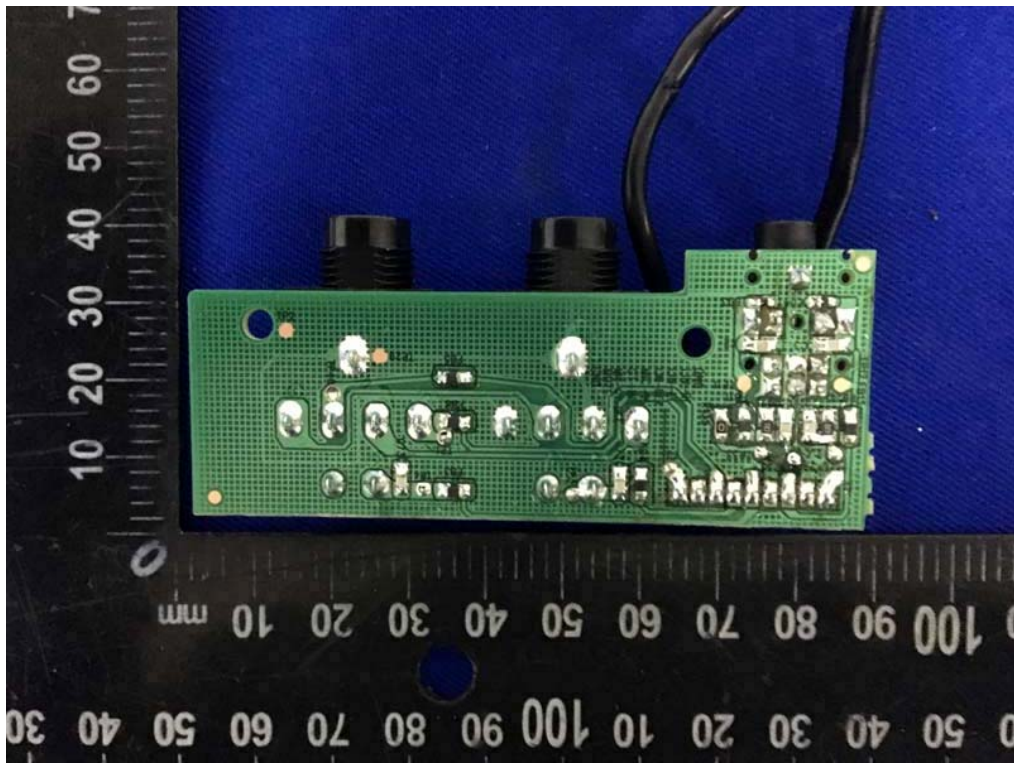
Internal Photos

M/N: SP491



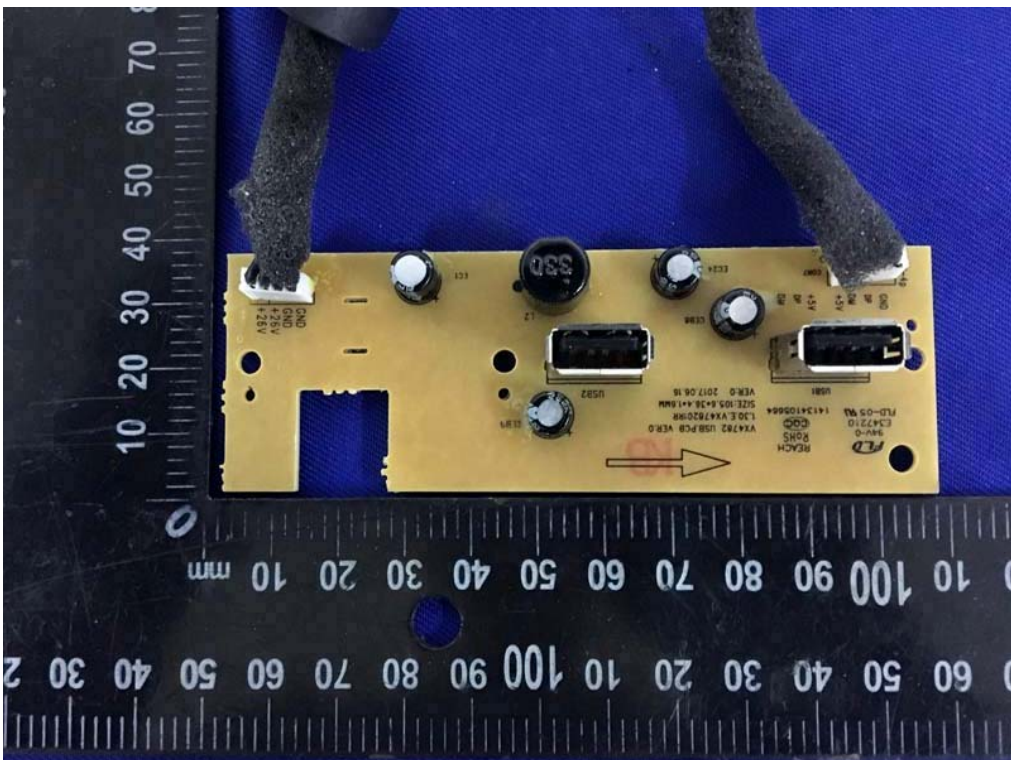
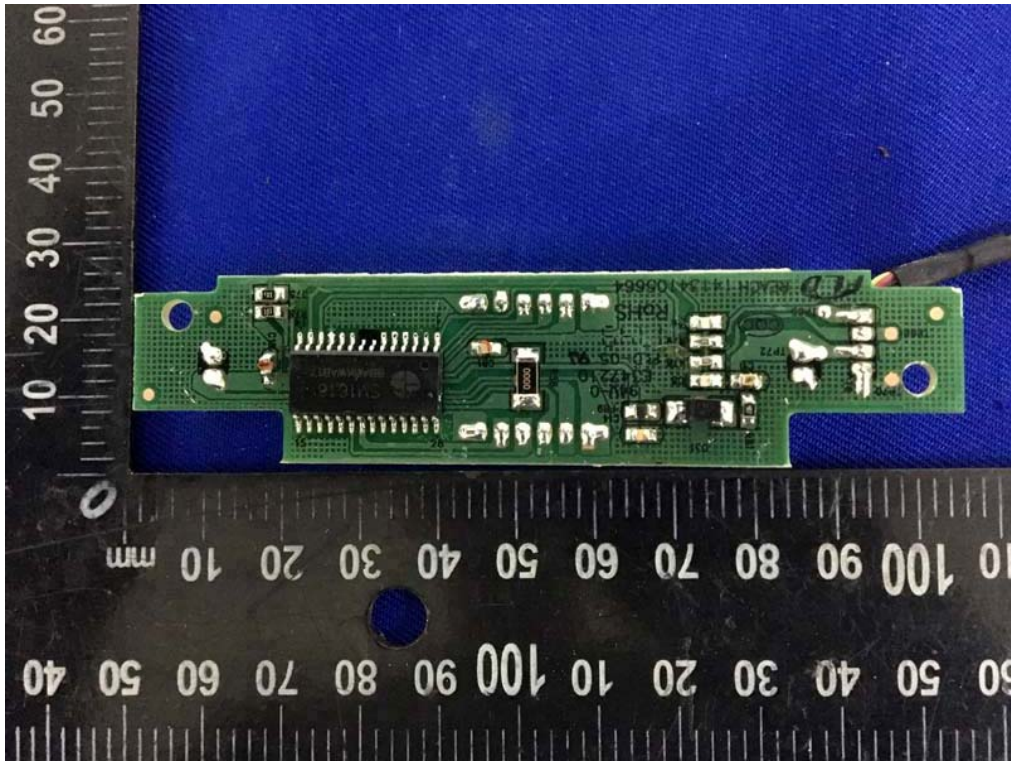
Internal Photos

M/N: SP491



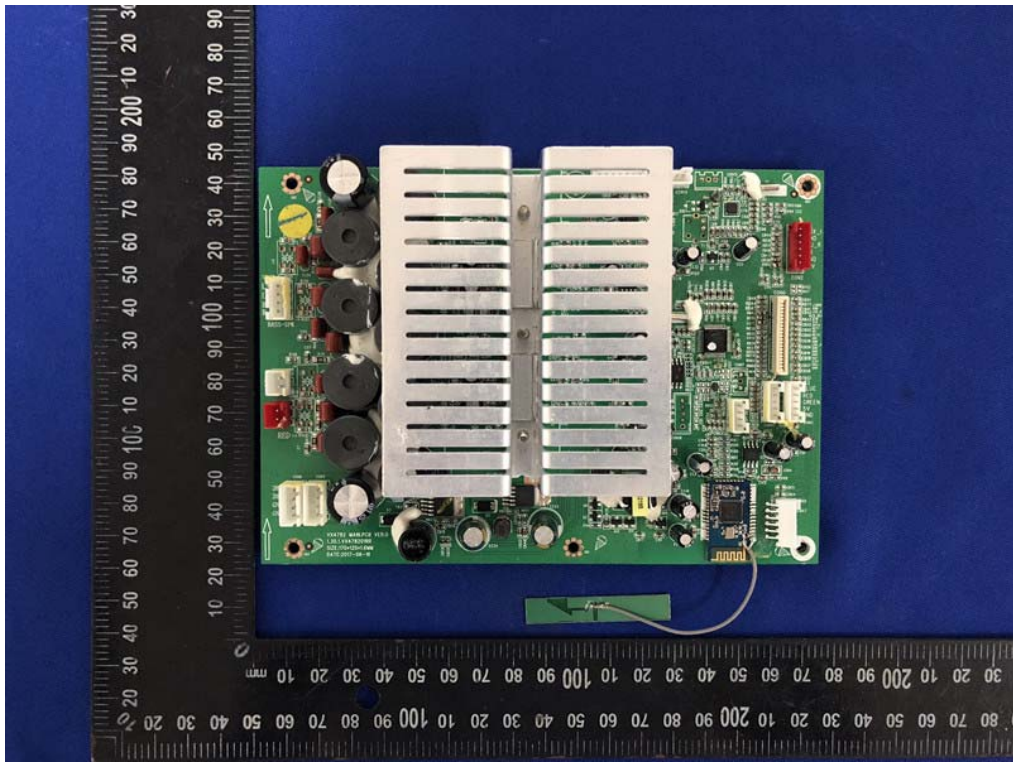
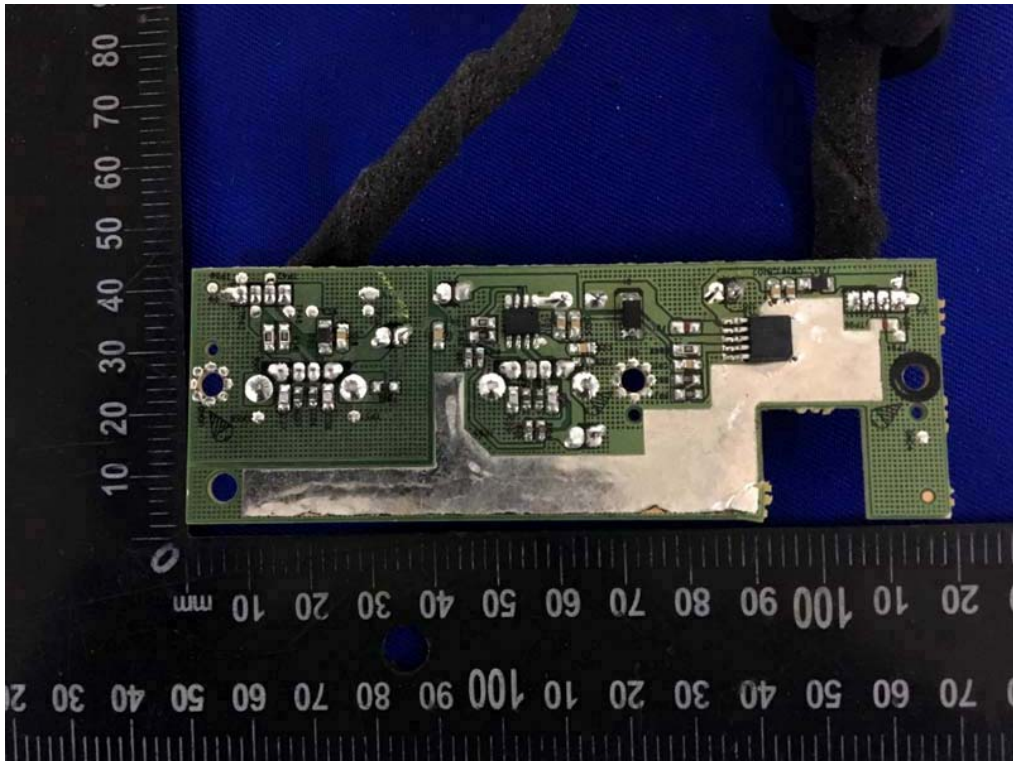
Internal Photos

M/N: SP491



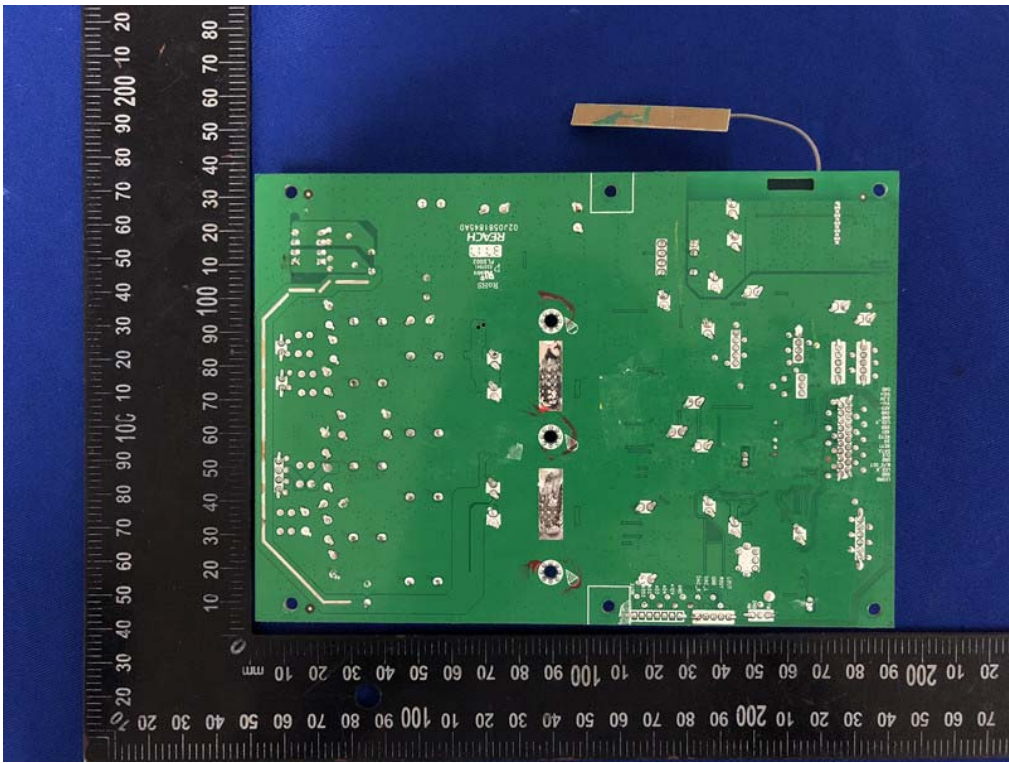
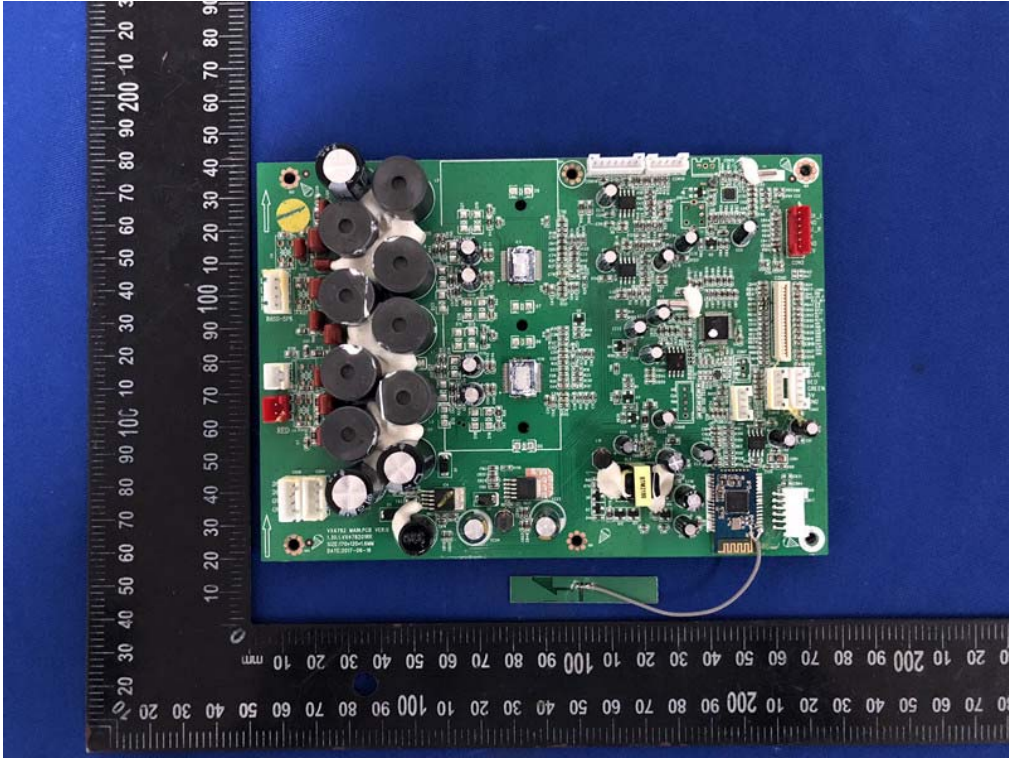
Internal Photos

M/N: SP491



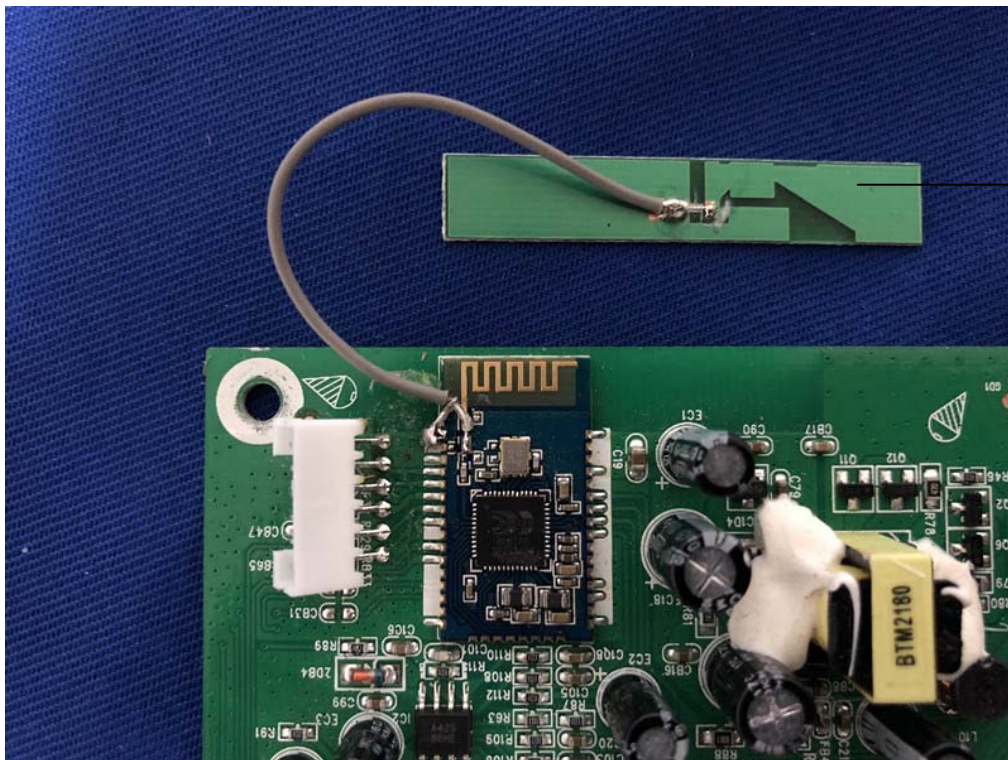
Internal Photos

M/N: SP491



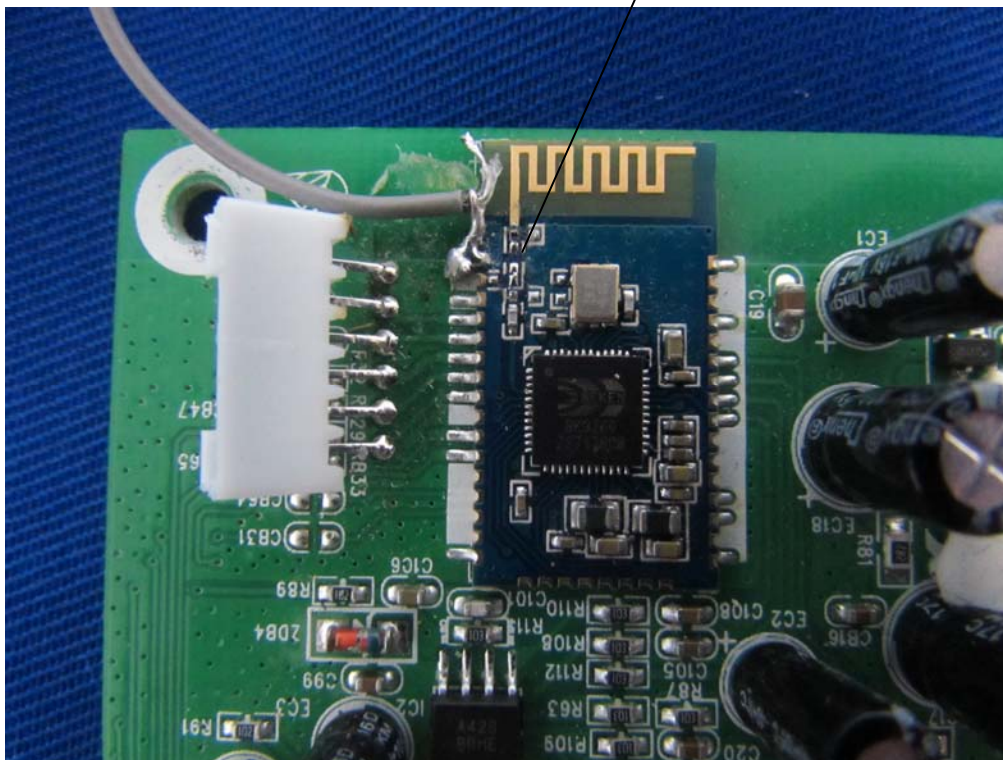
Internal Photos

M/N: SP491



Bluetooth
Antenna

chip capacitance has been deleted, so the PCB antenna has not been used.



Internal Photos

M/N: SP491

