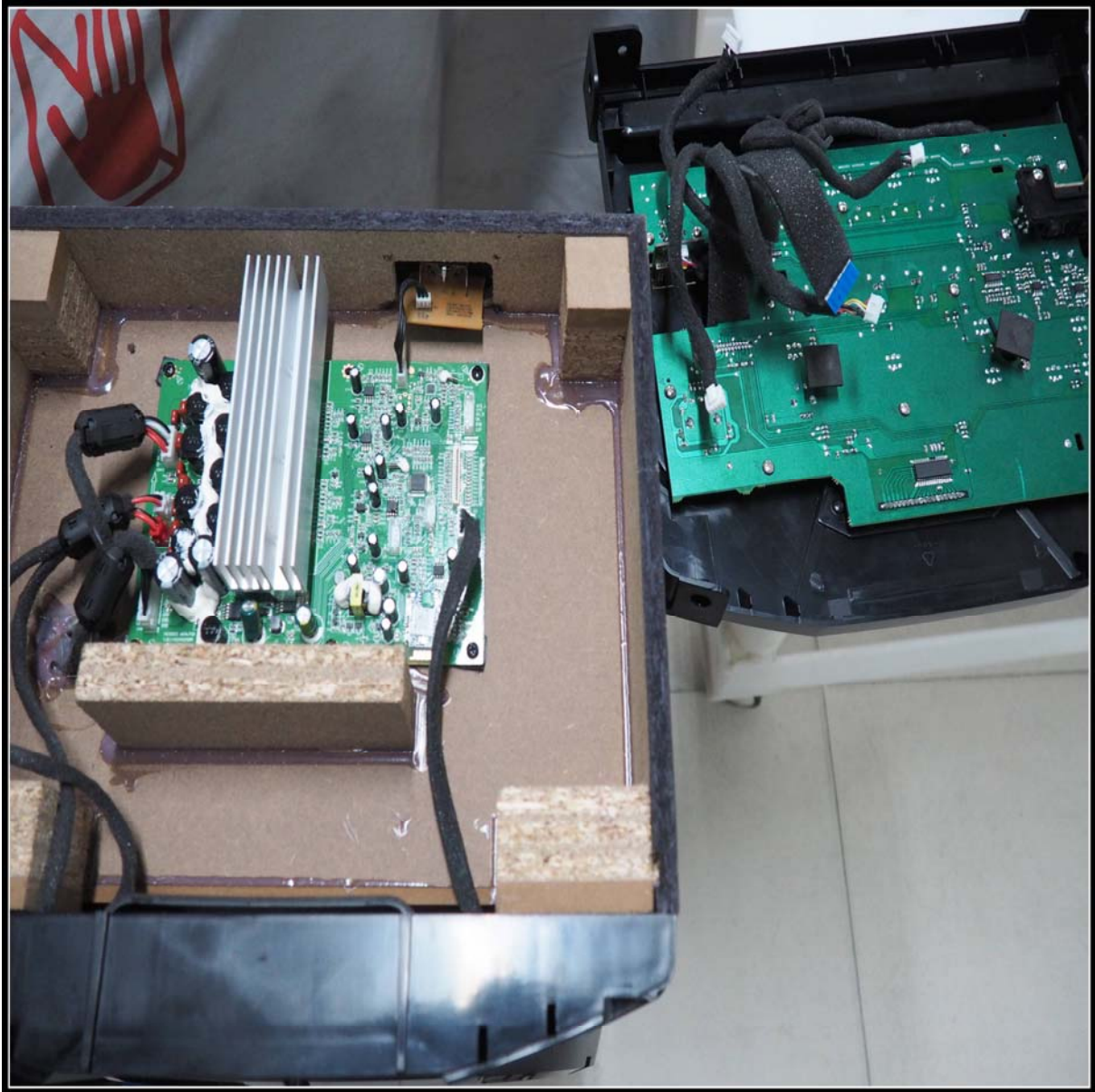
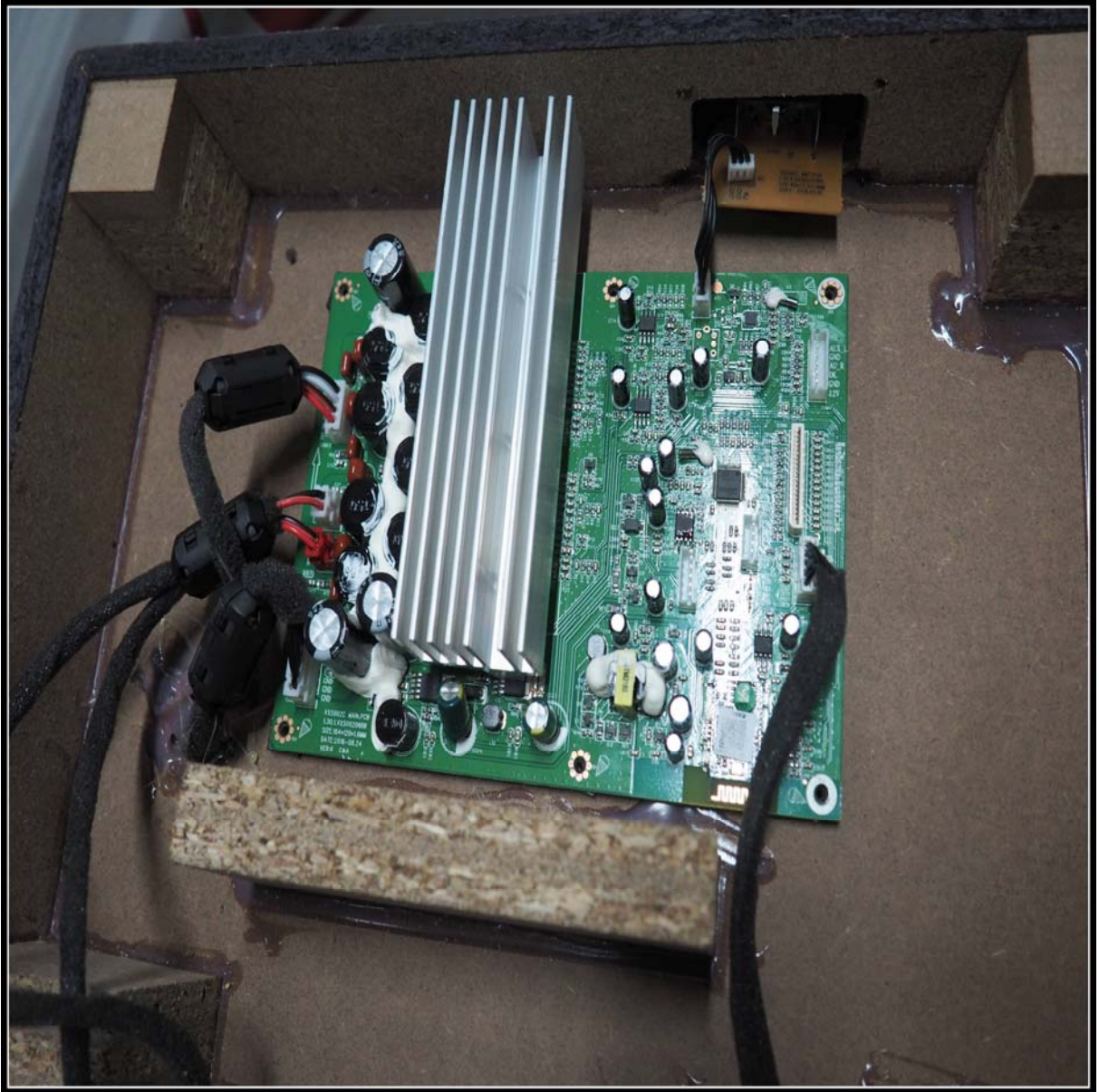
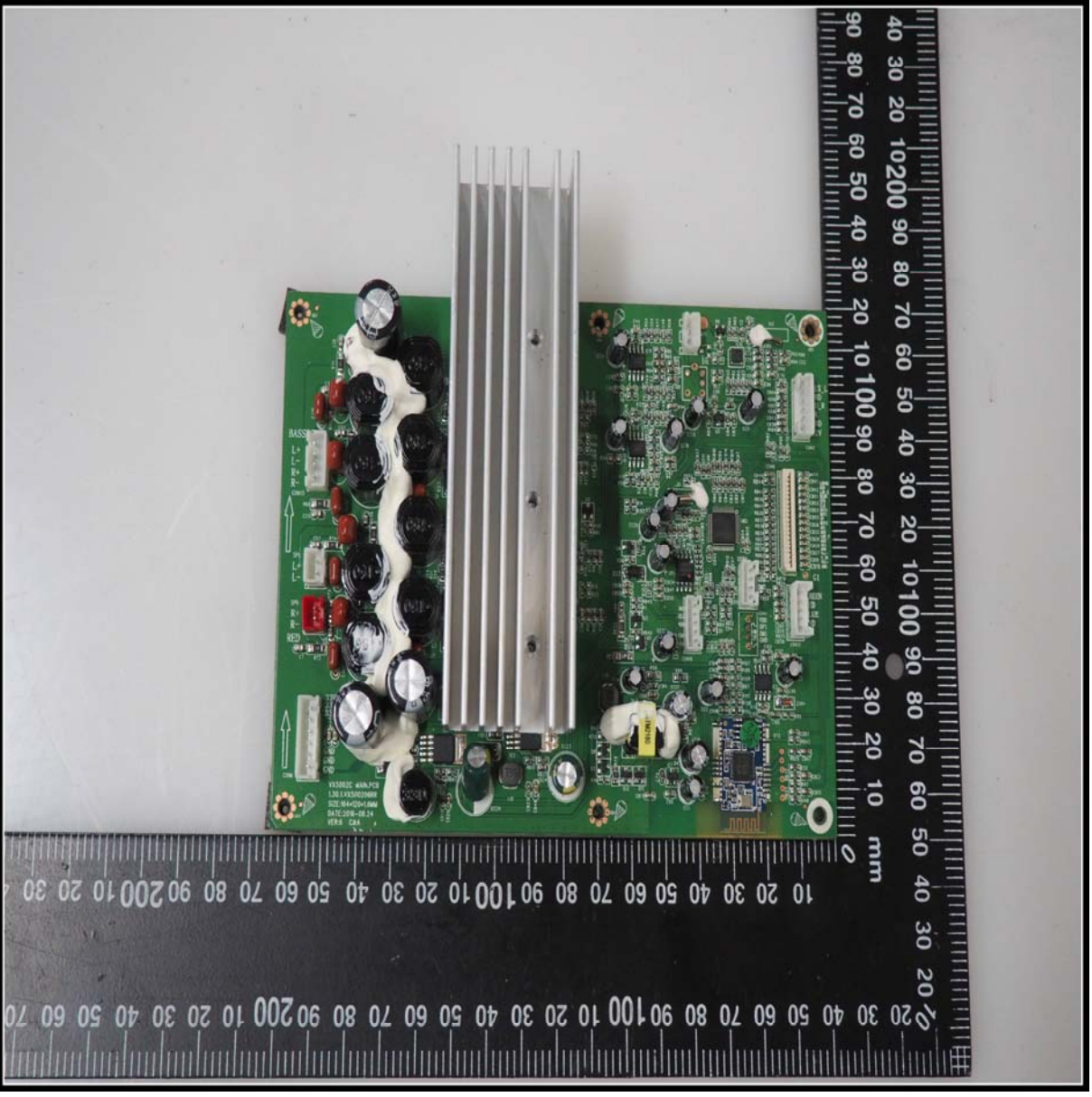
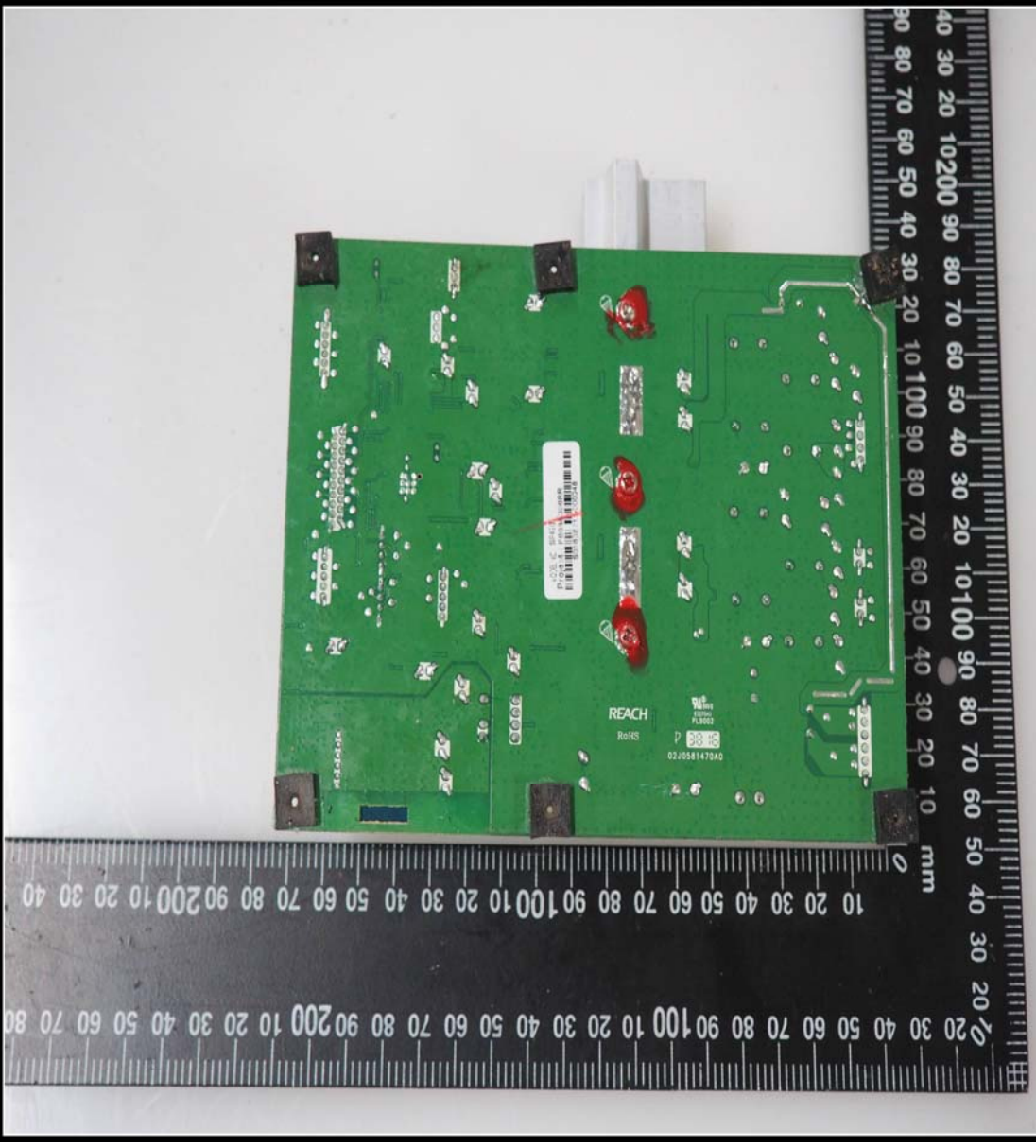


Internal Photos



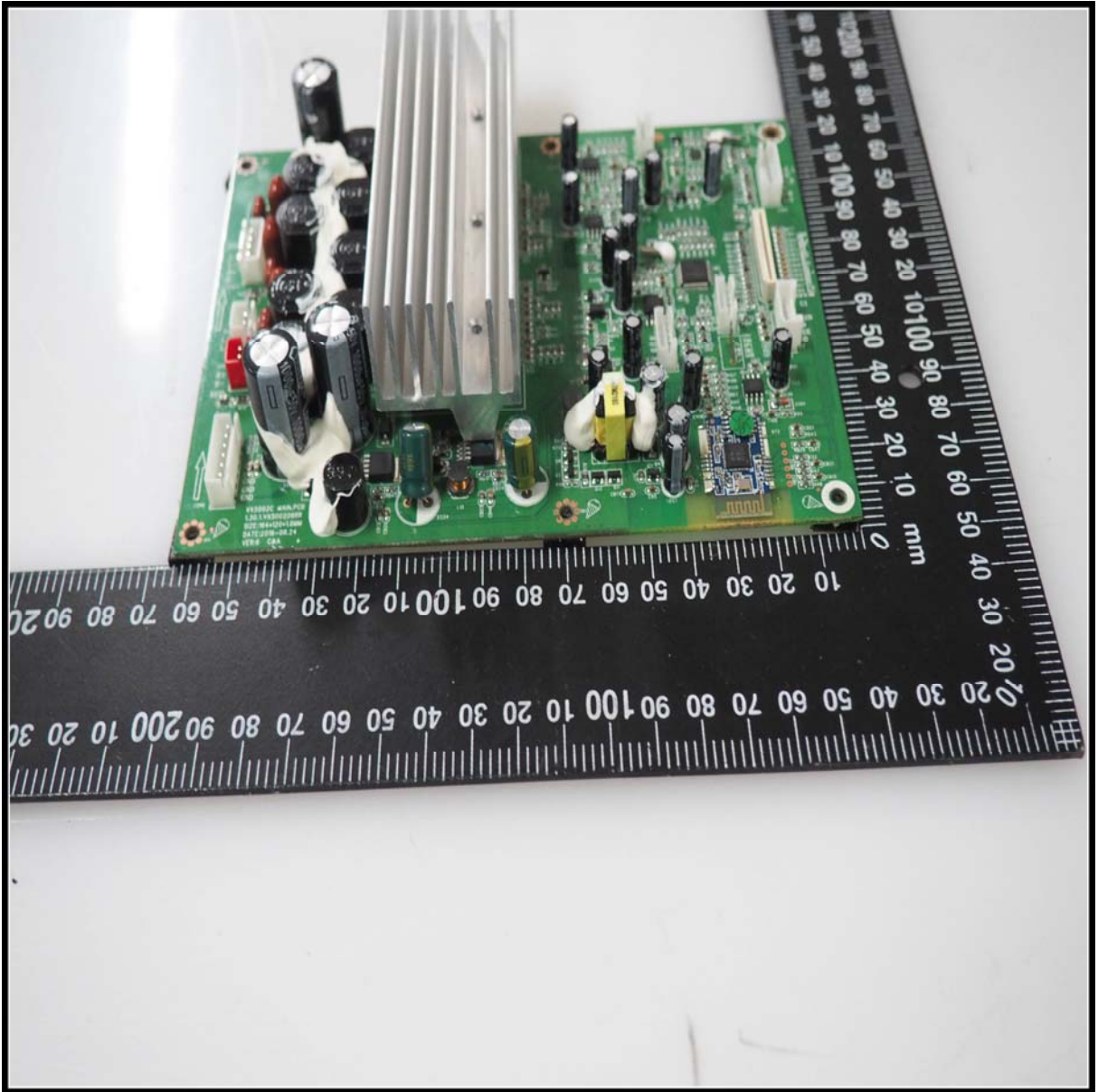


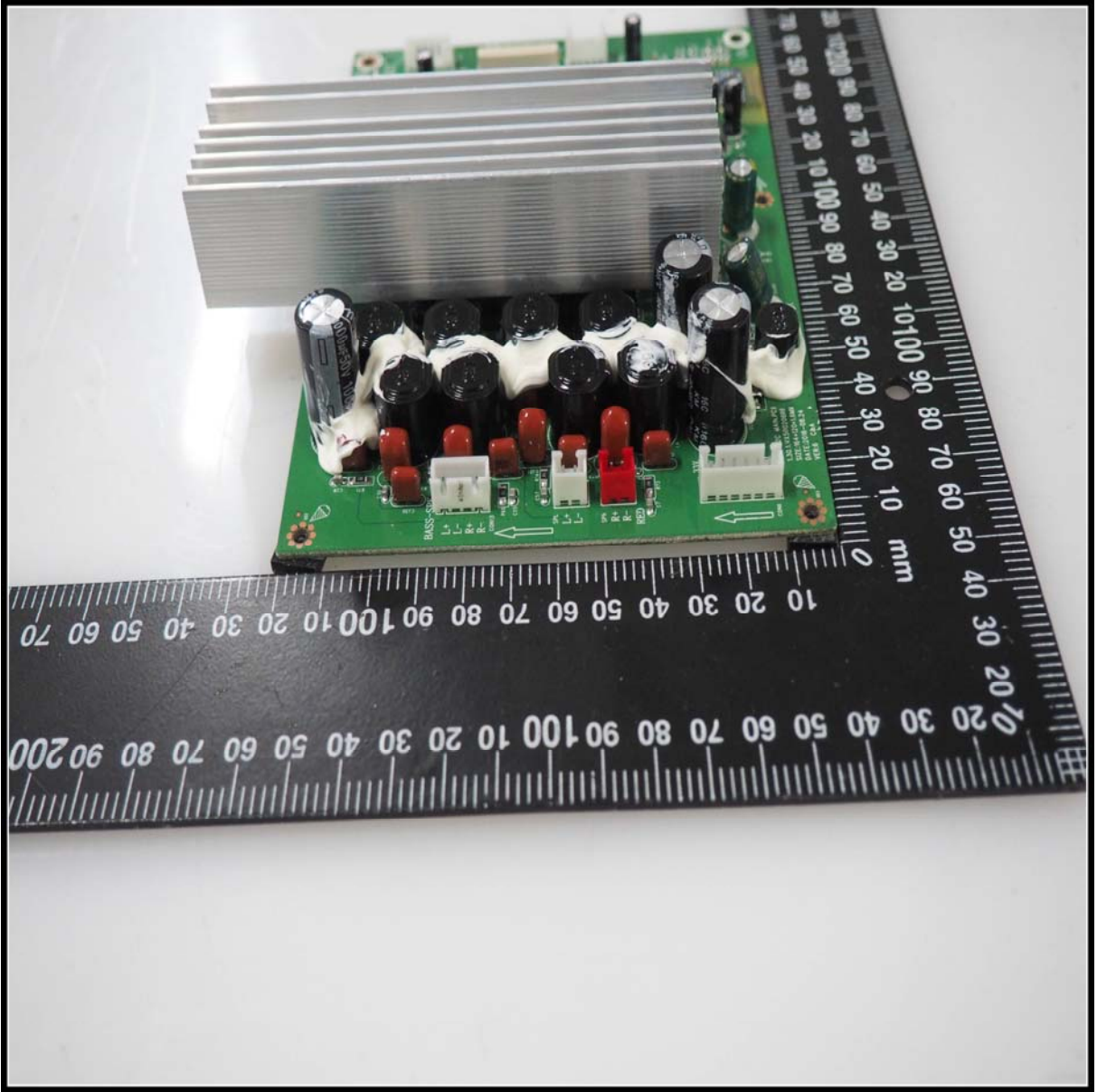


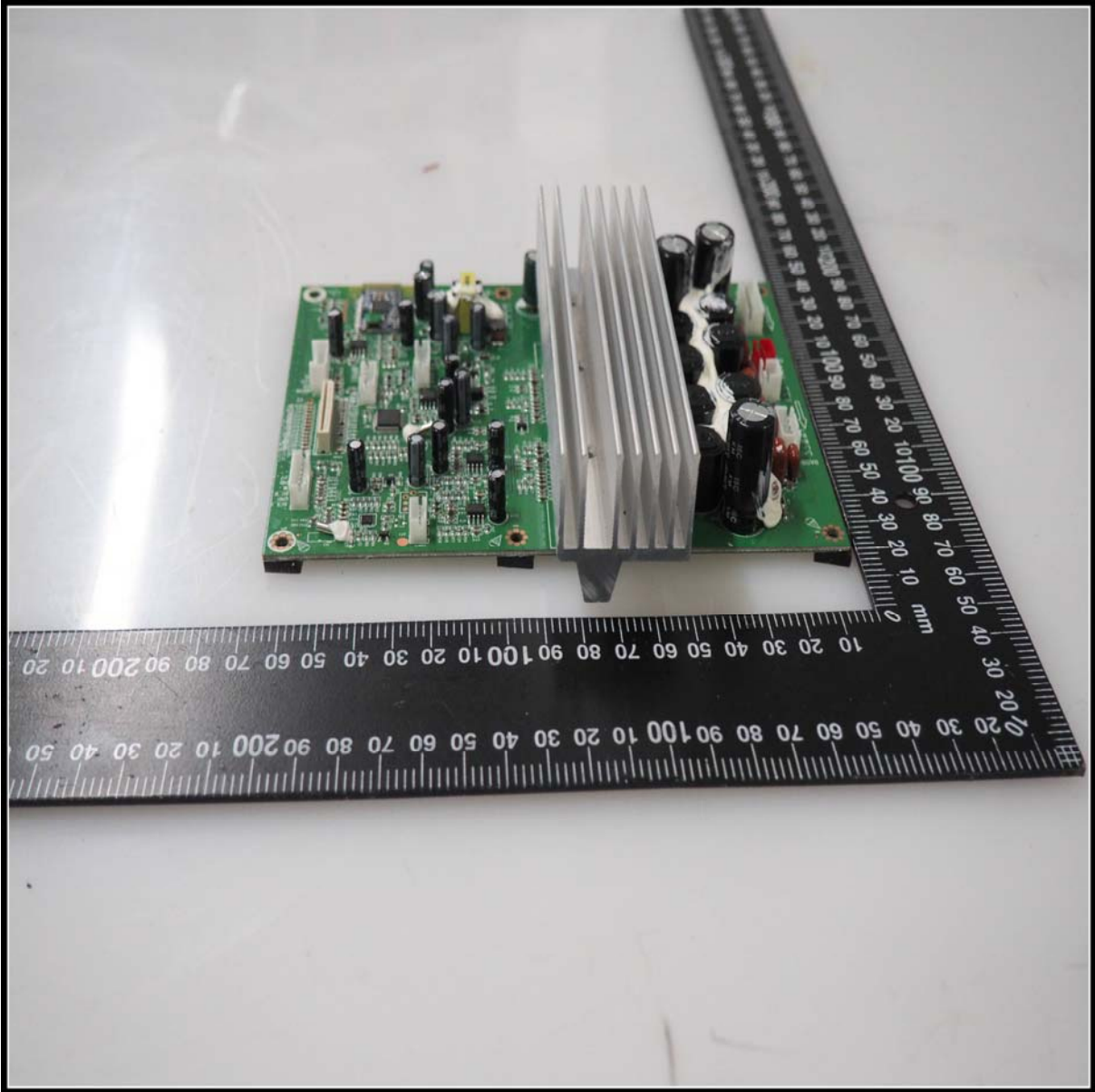


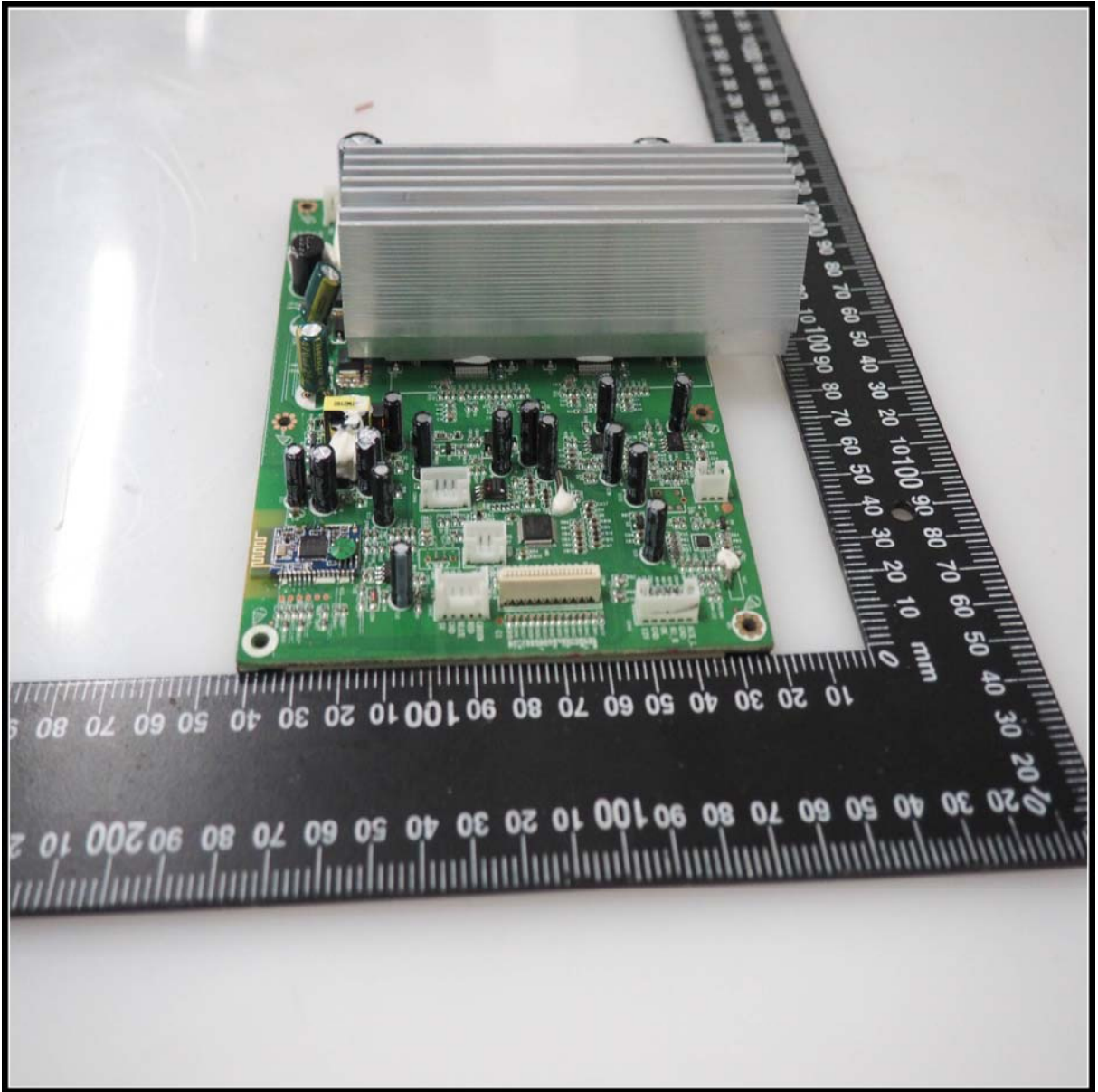
10000000000000000000  
REACH  
RoHS

REACH  
RoHS  
0248581478A0

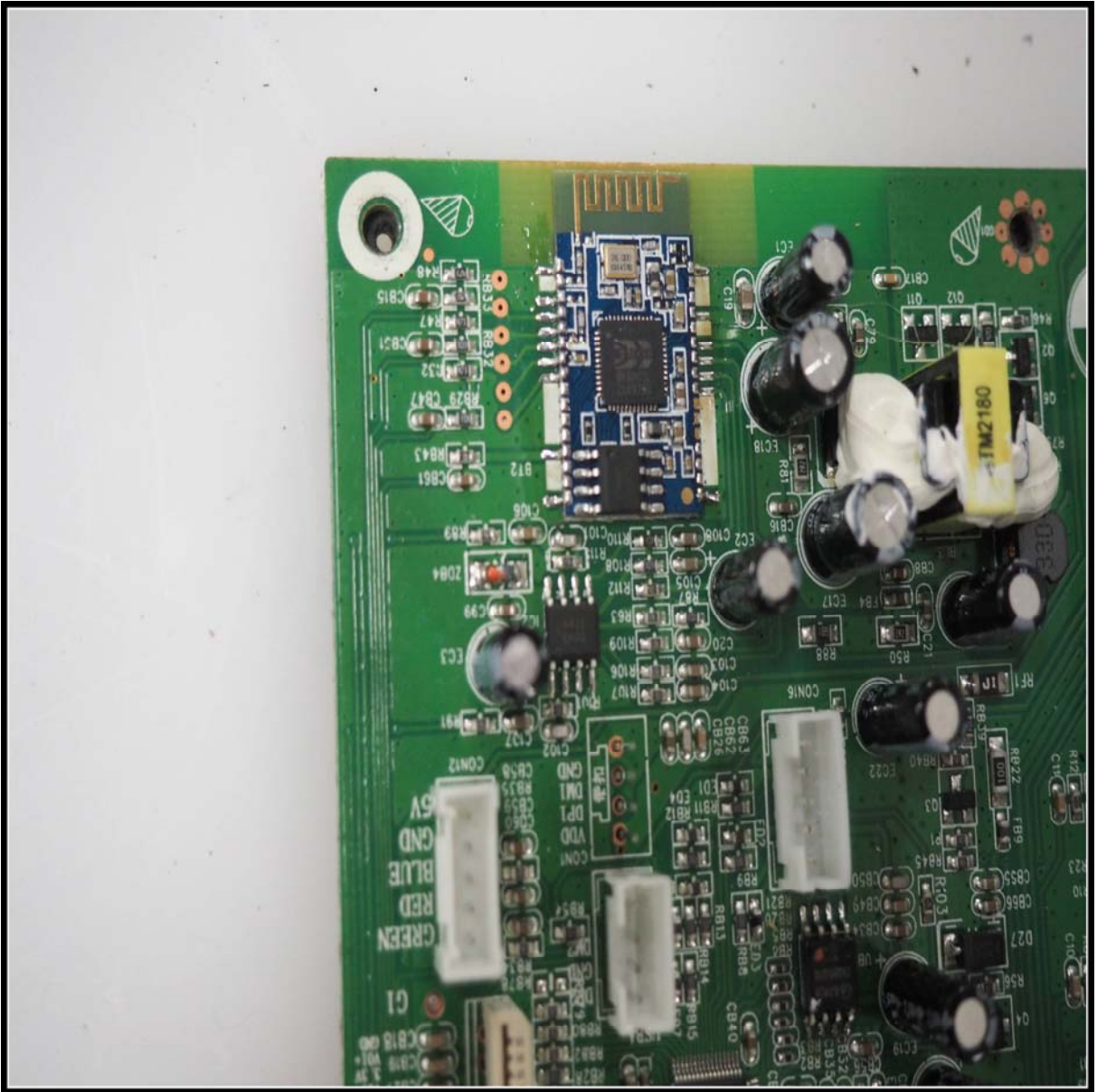






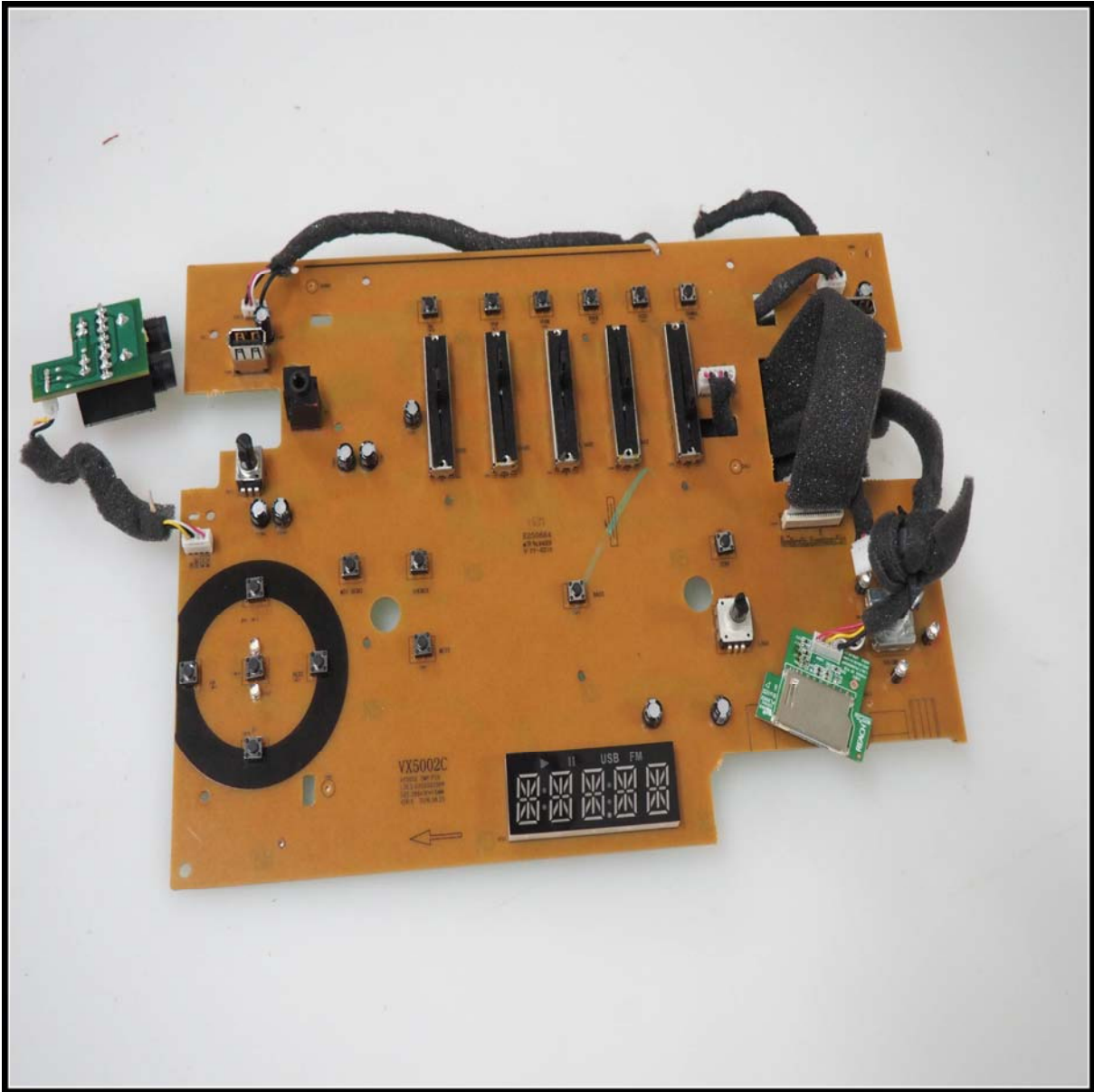


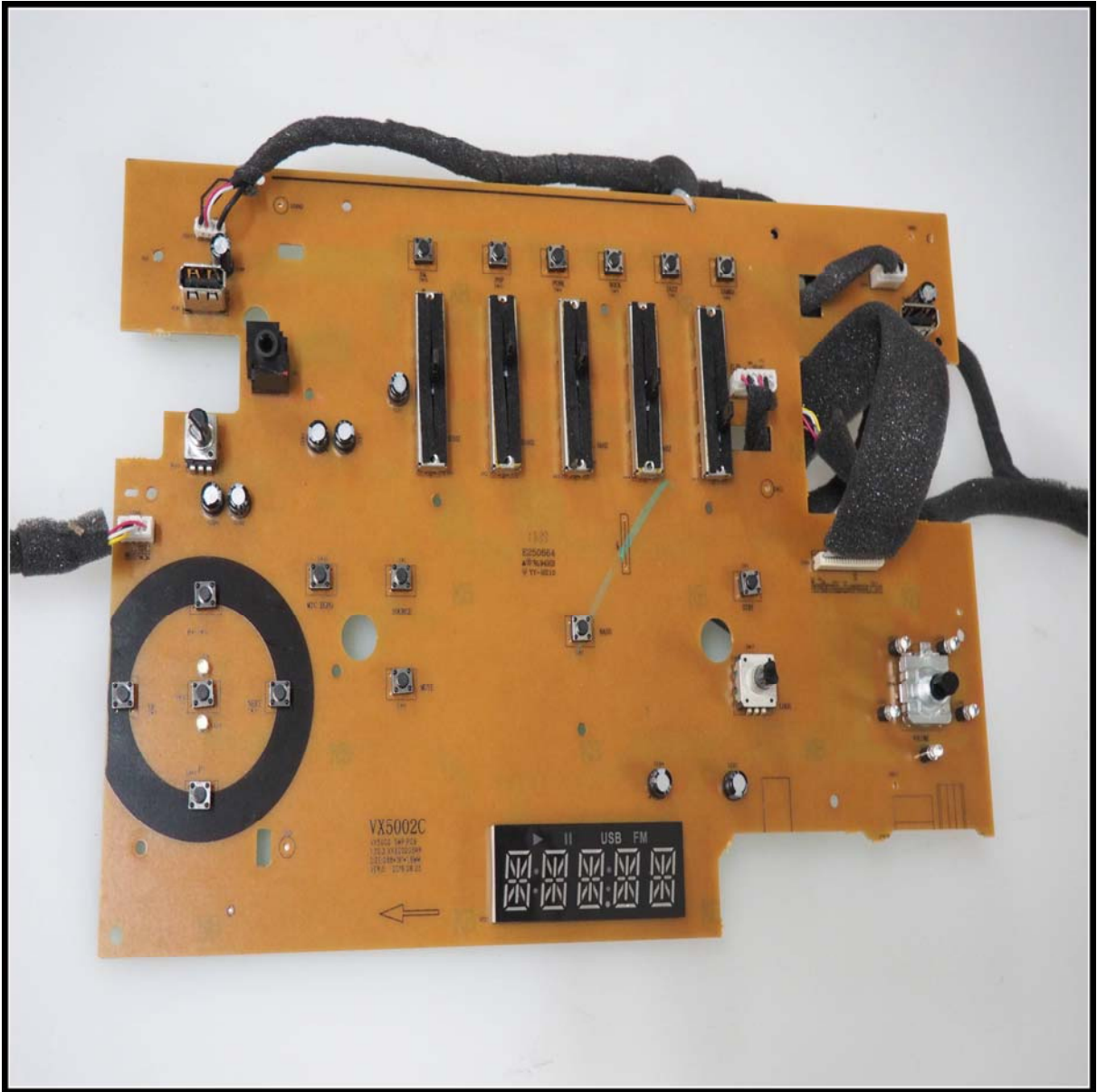


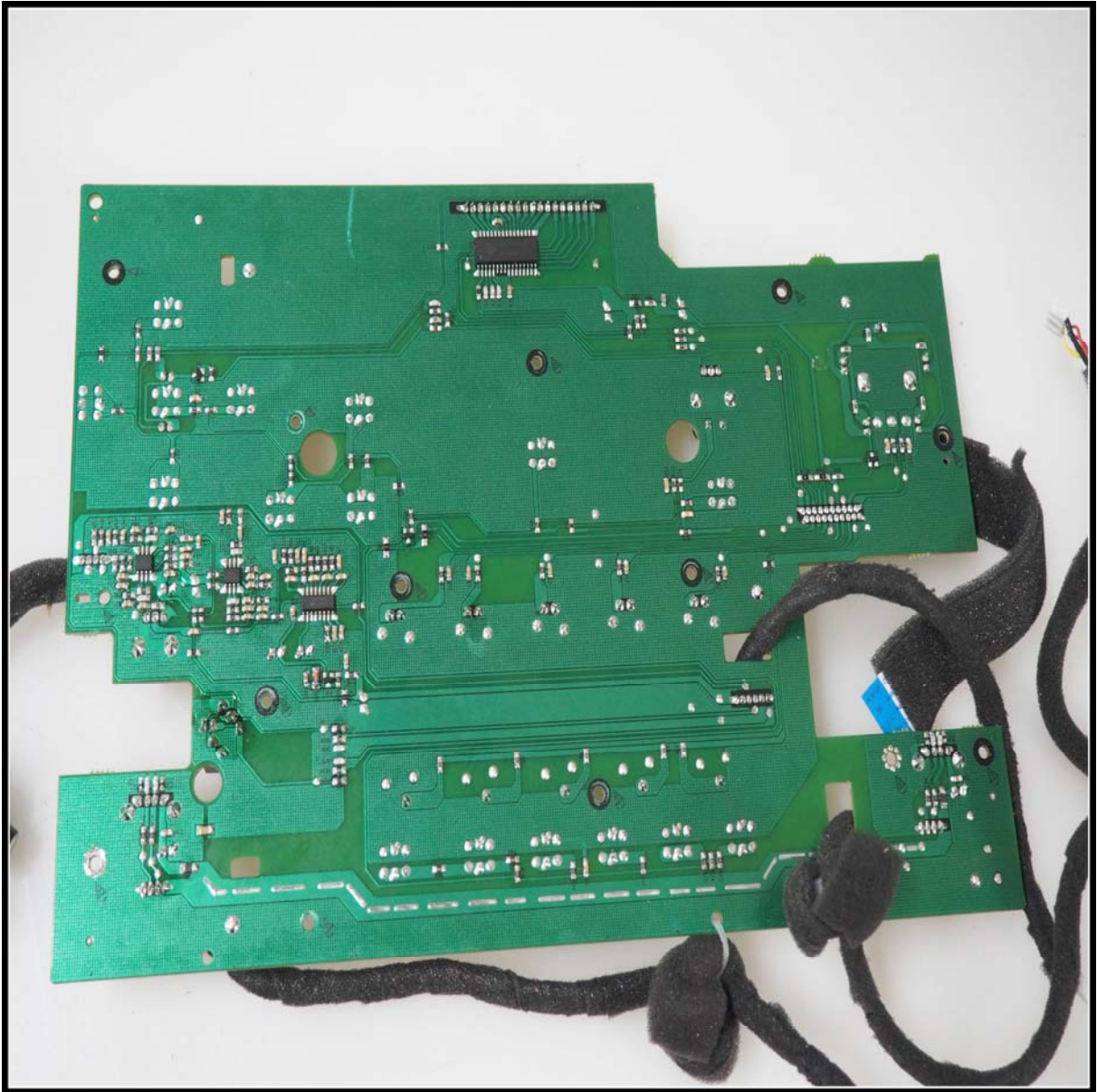


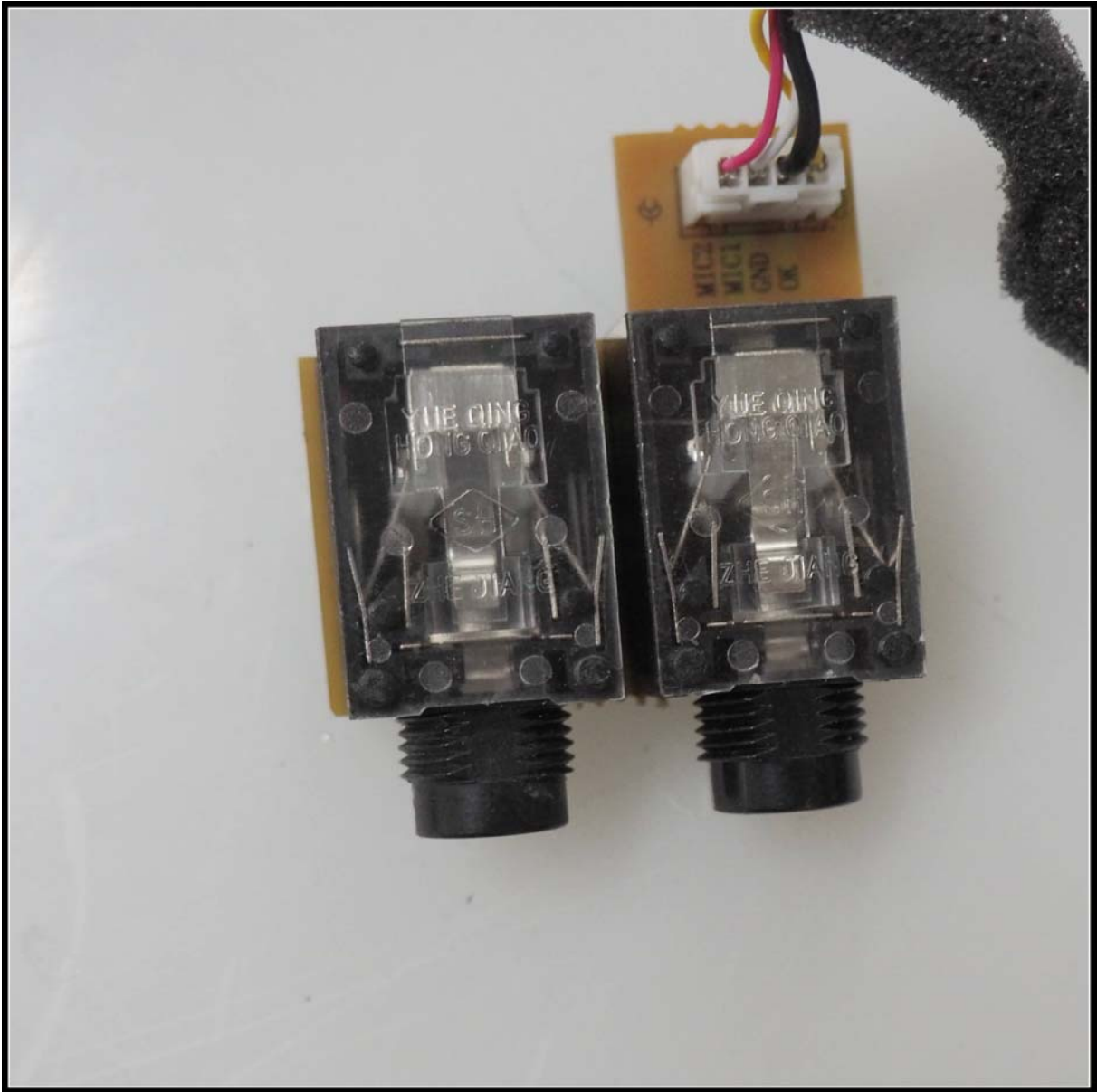






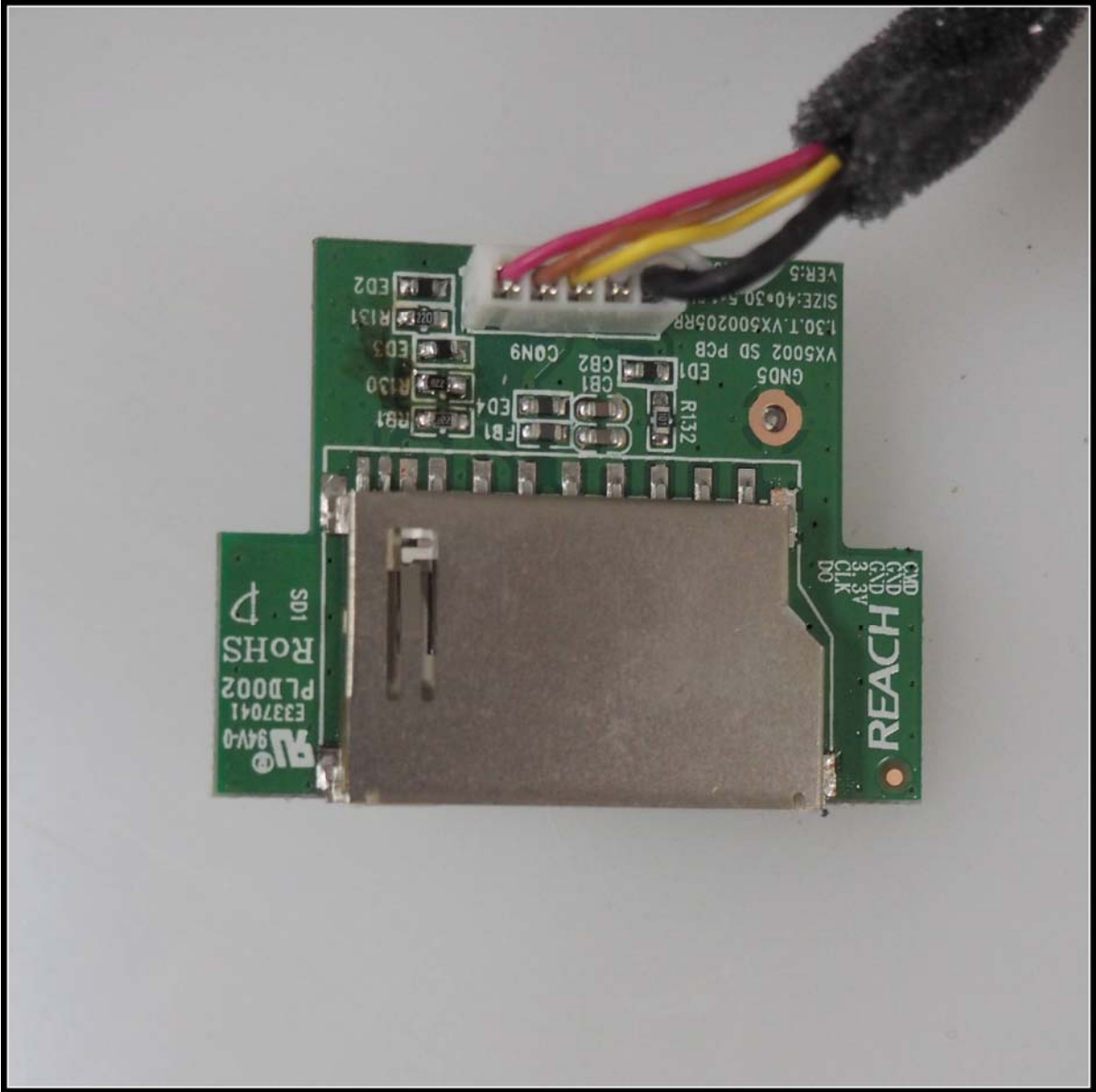


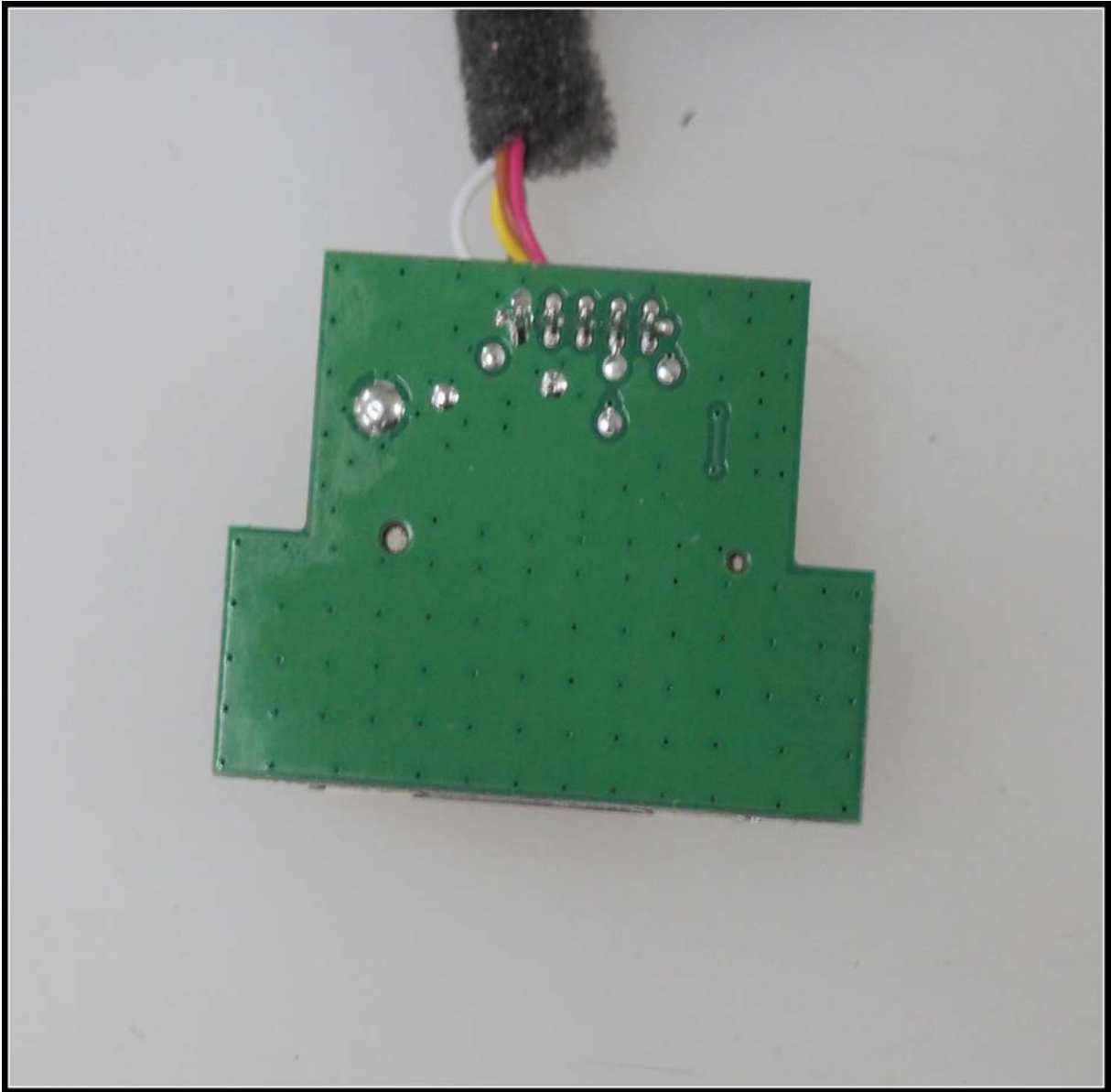












808™ Wireless Speaker

Model: SP490

Input: 100-240V~ 50/60Hz 200W

The Sum of USB A and USB B Output: 5V  $\overline{\text{V}}$  1A

FCC ID: VIXSP490 IC:21578-SP490

This device complies with Part 15 of the FCC Rules.

Operation is subject to the following two conditions: (1) this device may not cause harmful interference, and (2) this device must accept any interference received, including interference that may cause undesired operation.

CAN ICES-3(B)/NMB-3(B)

Made in China

S/N:

Voxx Accessories Corp.  
Material: PB/MDF

Date:

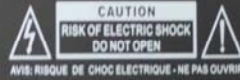


CONFORMS TO  
UL STD 80061  
CERTIFIED TO  
CSA STD C22.2  
No. 80061



ENERGY  
PERFORMANCE  
VERIFIED  
RENDIMENT  
ENERGETIQUE  
VERIFIE

100-240V~50/60Hz  
AC MAINS ~



The composite wood product contained in this finished goods comply with the phrase 2 emission standard specified in section 93120.2(a) of the California Code of Regulations. The finished goods have been made with no-added formaldehyde based resin or ULEF resins.



