



深圳市英佳创电子科技有限公司

Shenzhen Yingjiachuang Electronic Technology Co., LTD

Product antenna commissioning report

Time: October 31, 2022

Proposed system: Huang Zhiwei

Audit: Fang Wenfeng

Approval: Xiao Han

Shenzhen company address: building A.C, guangming valley, hongyu guangming valley, no. 11, jiangyou magang, shiwei community, matantian office, guangming district, shenzhen

Hangzhou company address: 212, Building B, Dahua Jianghong International Innovation Park, No. 369, Internet of Things Street, Binjiang District, Hangzhou

Telephone: 0755-27810060

Fax : 0755-27810057

Company website: <http://www.szsyjc.com>

E-mail: [yjc@szsyjc.com](mailto:yjc@szsyjc.com)

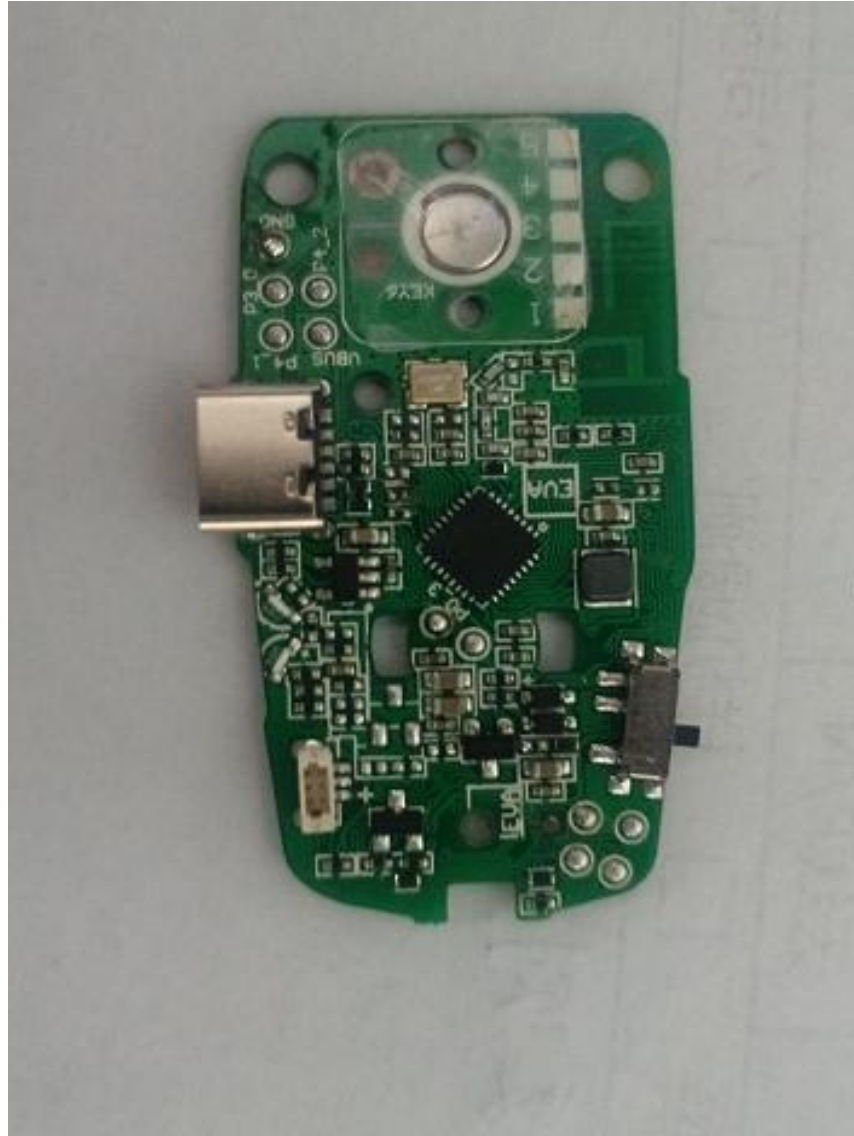
## —. Project Overview

CustomerName	Project Name	Antenna implementation method
802	SRC-0502	Onboard antenna
Working frequency band (MHz)		
2.4G	2400-2500 MHz	

# Directory:

4. Original antenna location diagram
5. Standing wave diagram of original antenna
6. Antenna change diagram
7. Antenna standing wave pattern
8. Antenna 2.4G passive test data
9. Antenna test 2D3D diagram

# Original antenna location diagram



# Standing wave diagram of original antenna



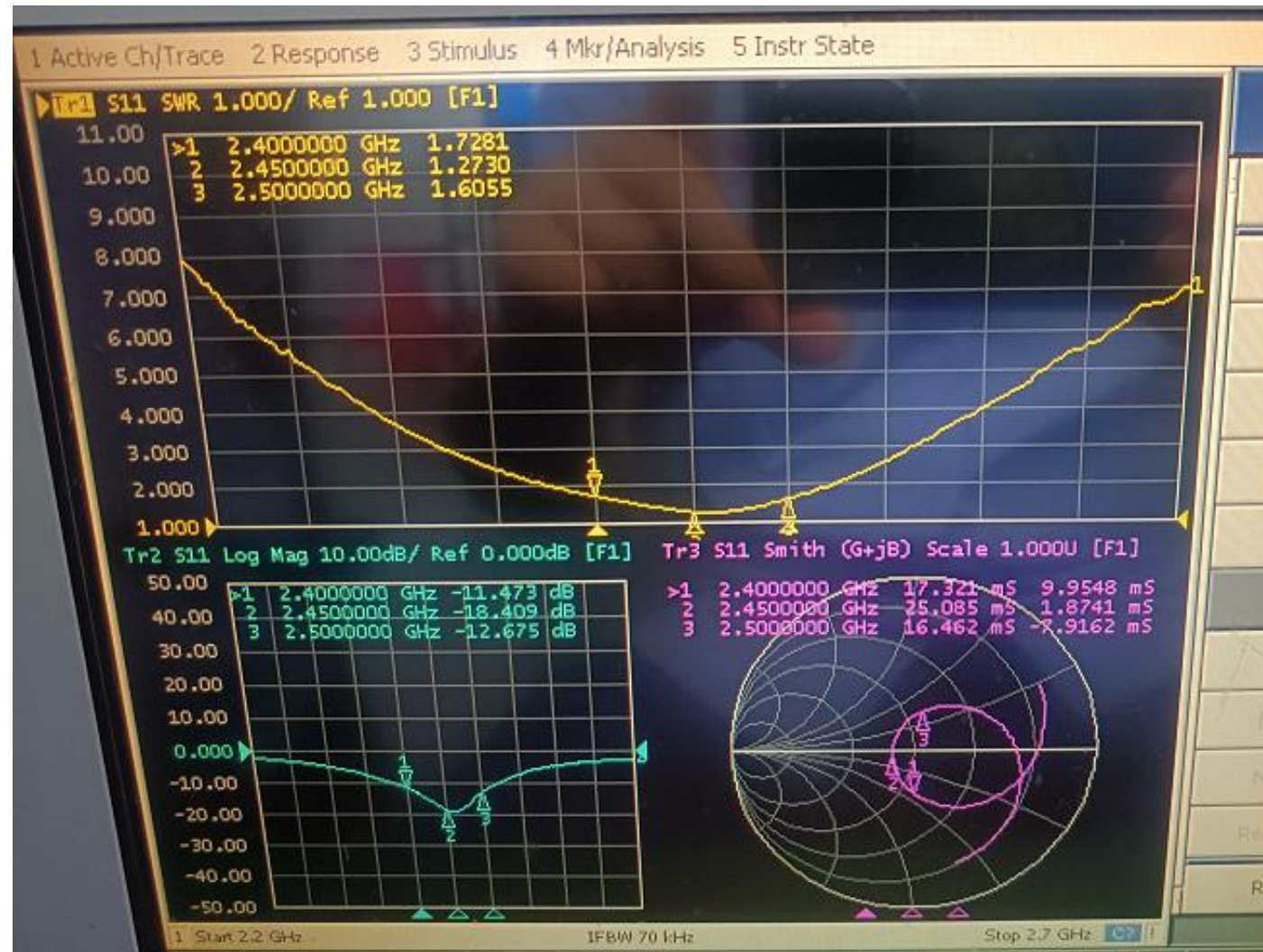
## Antenna change diagram



There is a 0.5pF capacitor  
at this position



# Antenna standing wave pattern



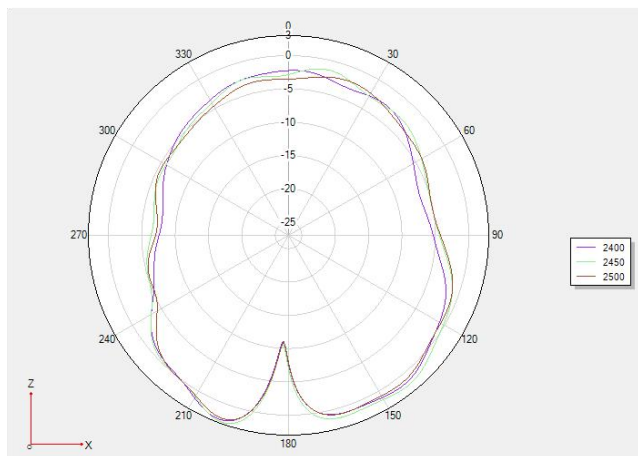
## Antenna 2.4G passive test data

Frequency	Efficiency / %	Gain/ dBi
2400MHz	37.56	2.55
2410MHz	40.02	3.2
2420MHz	39.93	2.94
2430MHz	39.24	2.74
2440MHz	40.02	2.59
2450MHz	40.09	2.82
2460MHz	41.99	2.57
2470MHz	39.5	2.21
2480MHz	40.73	2.49
2490MHz	38.22	2.2
2500MHz	38.06	2.28

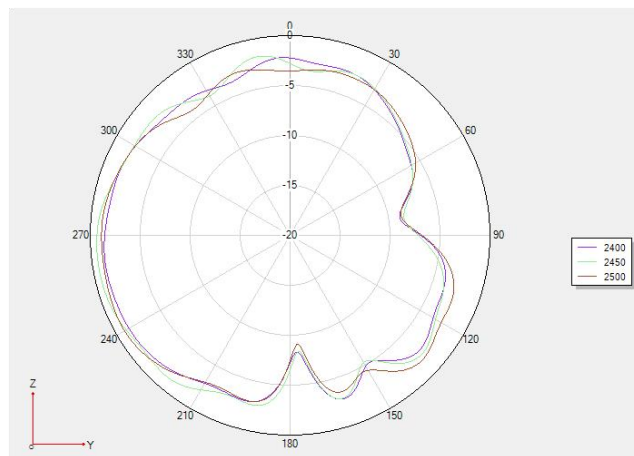


# Antenna test 2D3D diagram

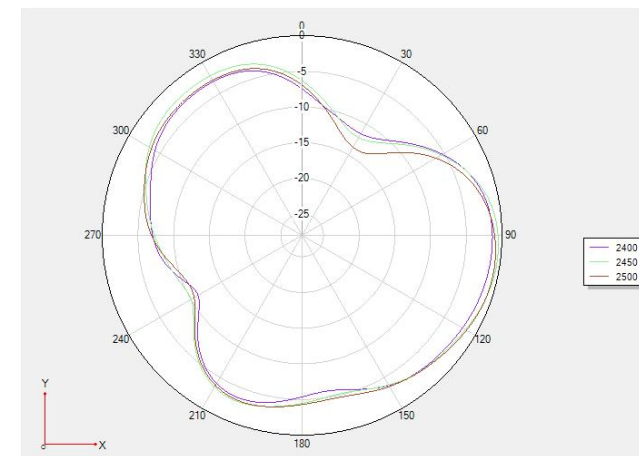
## Phi 0 2Dfigure



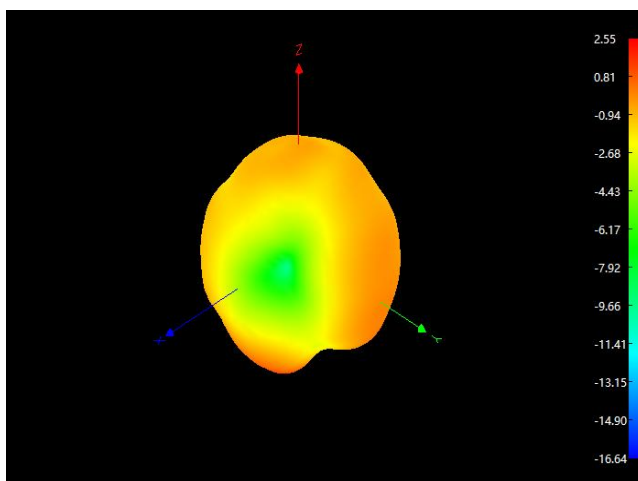
## Phi 90 2Dfigure



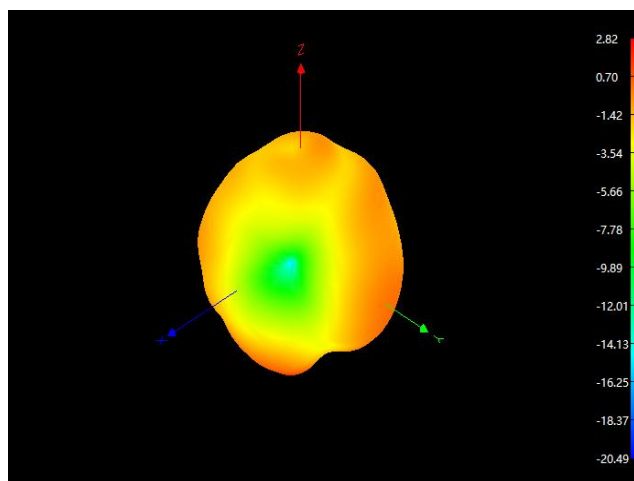
## Theta 90 2Dfigure



## 2400



## 2450



## 2500

