



MySound

ADDITIONAL

Wireless TV Headset

Quick Start Guide



AcousticResearchSupport.com

Want an easier setup?
Scan here
for quick step-by-step
video instructions

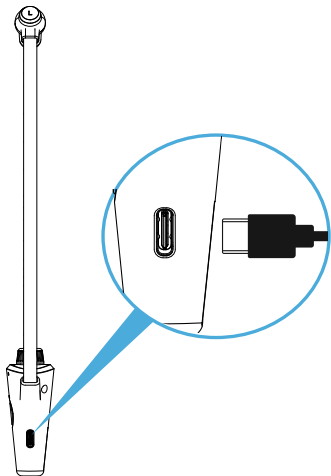
What's in the package?



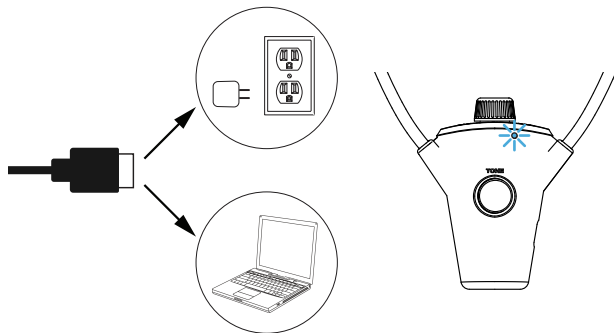
USB charging
cable

Step 1: Charge the headset

Plug one end of an included charging cable into the charging jack on the left side of the headset.




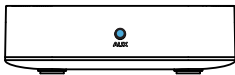
Plug the other end into a USB power source (like a computer) or USB power adapter (not included).



The indicator light on the front of the headset flashes while the headset is charging.

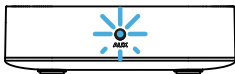
Step 2: Pair the new headset with your transmitter

1. Make sure the transmitter is on (its indicator light should be solid blue). Press and hold the  button if the transmitter isn't on.

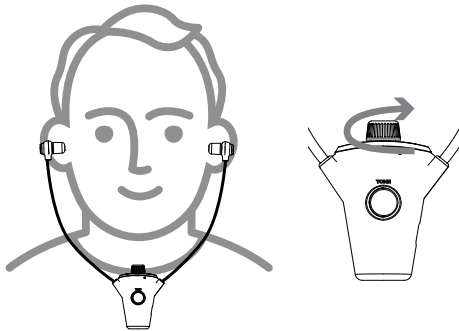


2. Press and hold the transmitter's **PAIR** button to start pairing with your new headset.

The **AUX** indicator light starts blinking on the transmitter's front panel.



3. Put the headset on and rotate its volume knob to turn it on. The headset makes its startup sound followed by a beep. This means it's in pairing mode with the transmitter.



After a few moments, the audio from your TV will start playing through your headphones (make sure your TV is on and its volume is up).