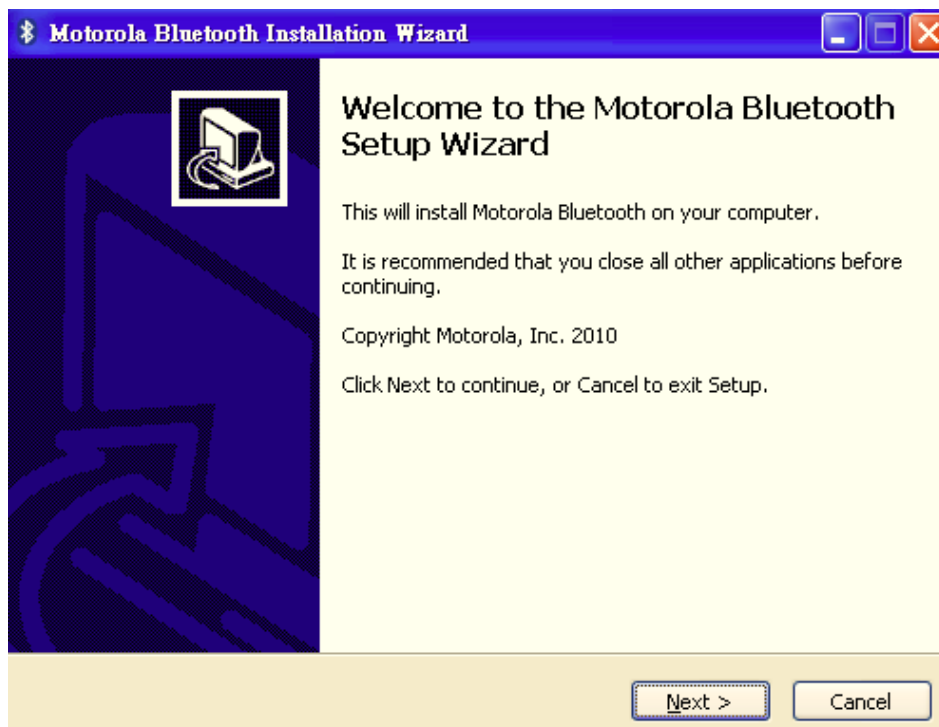


VD-9000 Bluetooth 3.0 Plus High Speed

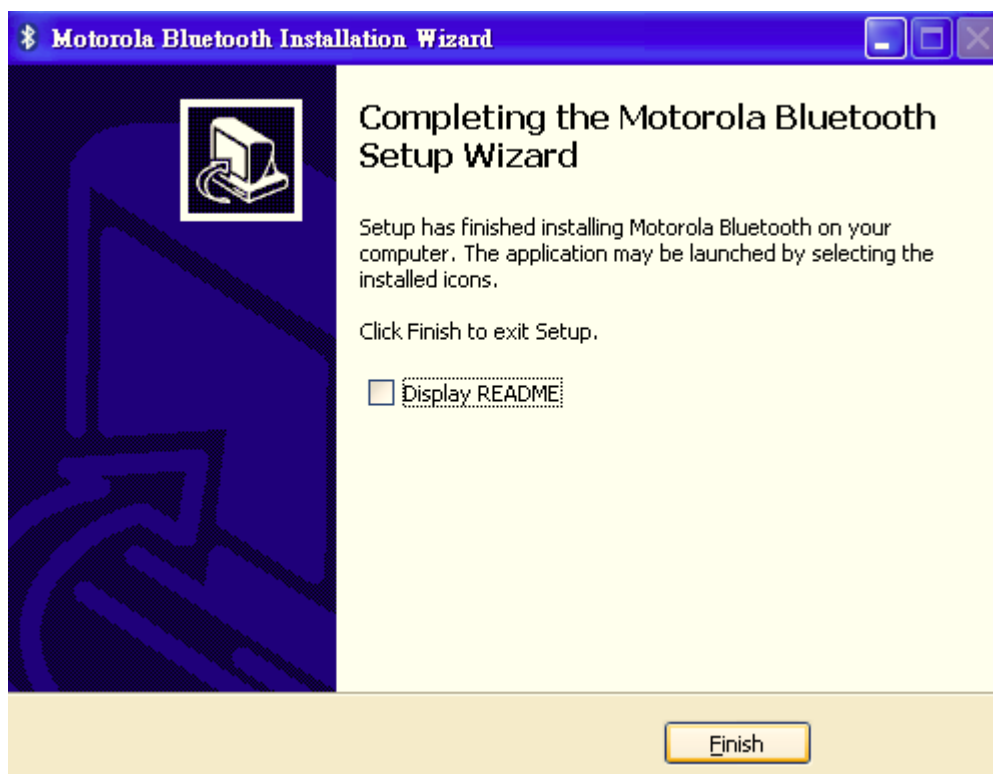
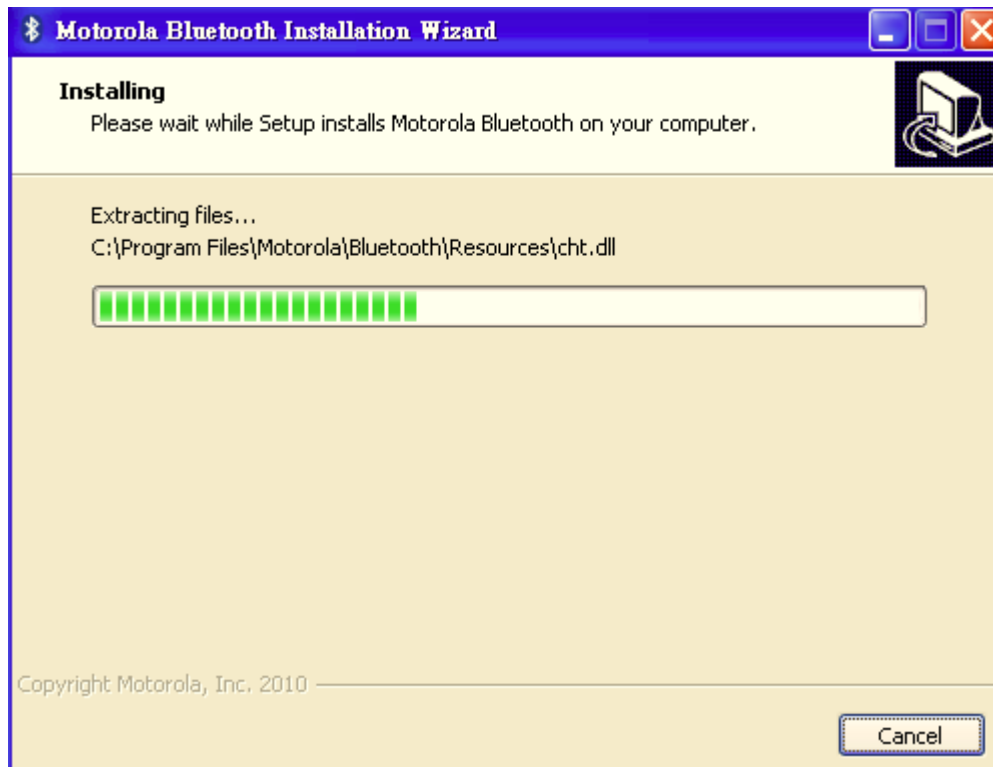
Quick Start

1. Plug VD-9000 into your laptop or desktop.
2. Make sure to uninstall the Motorola BT Stack which already installed in your system and restart computer.
3. Put the CD in and CD will auto run to install Motorola BT Stack and Realtek Wi-Fi package automatically.

- Start to install Motorola BT Stack automatically.

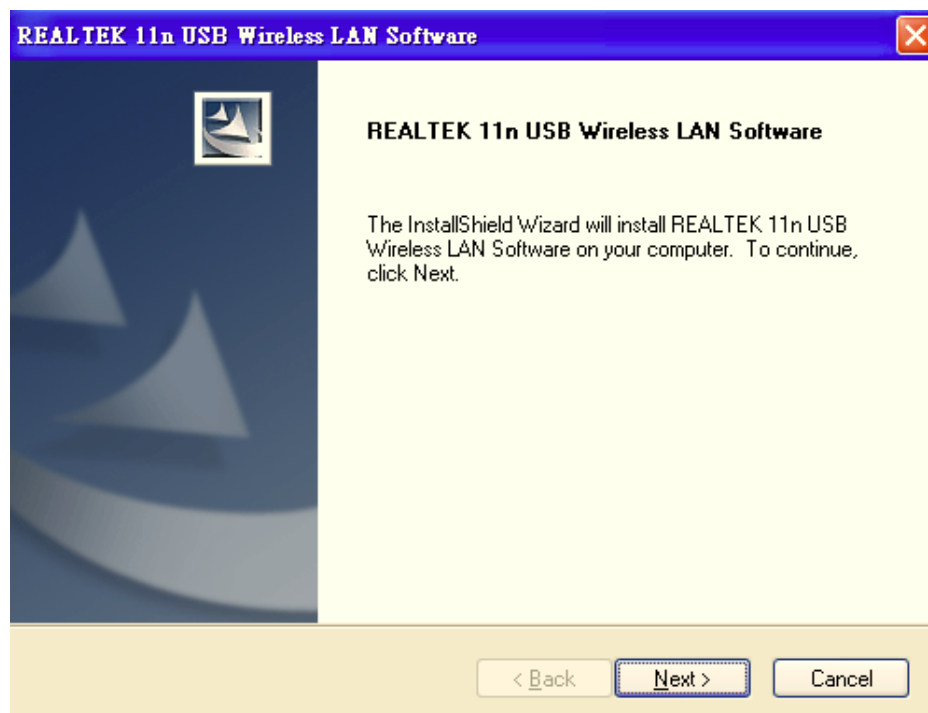
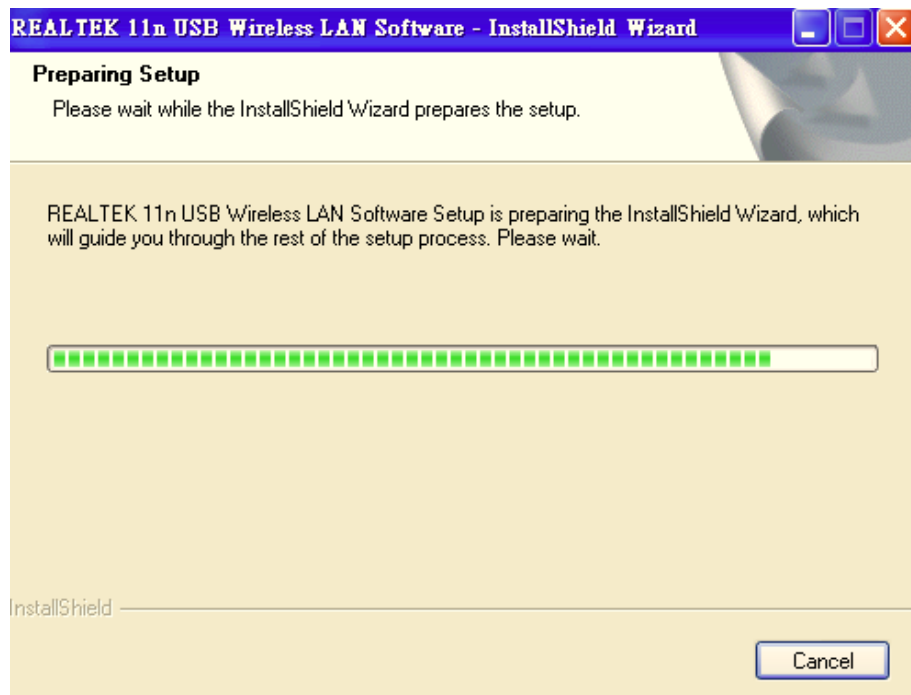


VD-9000 Bluetooth 3.0 Plus High Speed

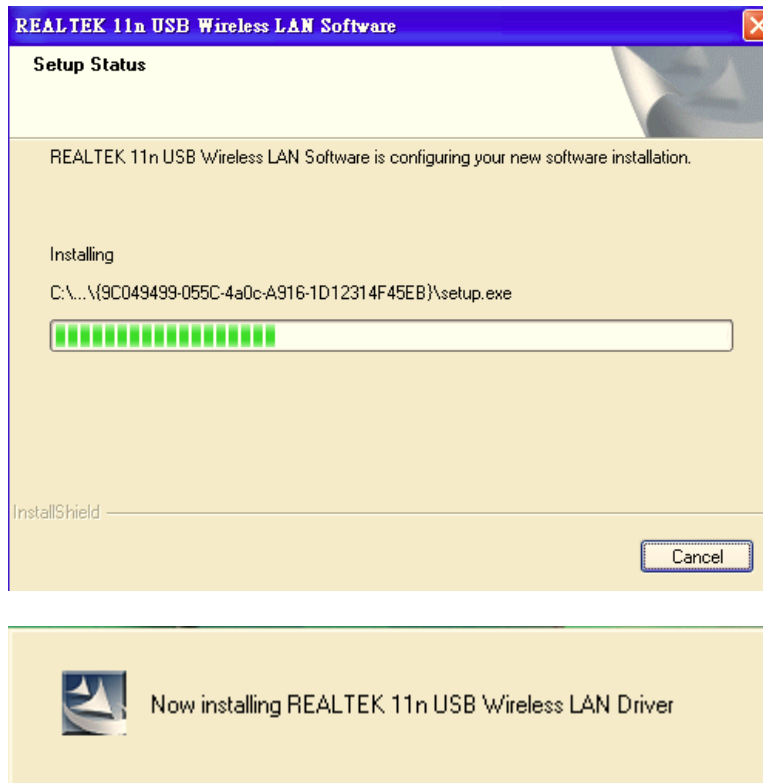


VD-9000 Bluetooth 3.0 Plus High Speed

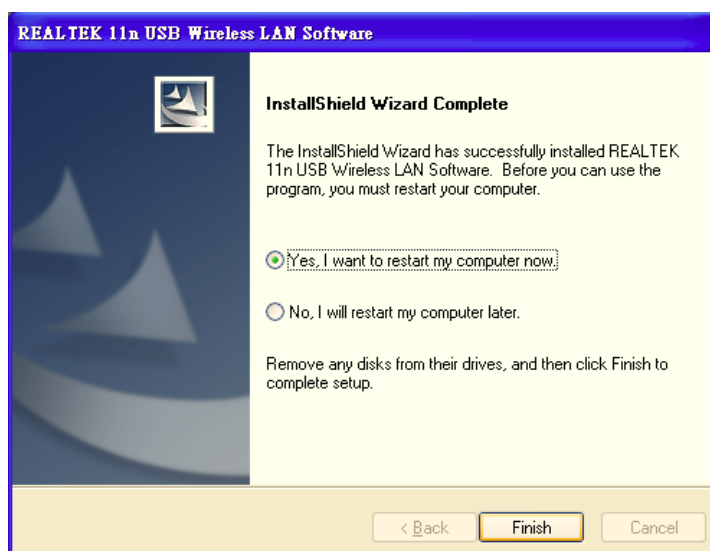
- When Motorola BT Stack install finished, will auto launch Realtek setup process.



VD-9000 Bluetooth 3.0 Plus High Speed



- When Realtek setup package install finished, please select restart computer to make installation available.

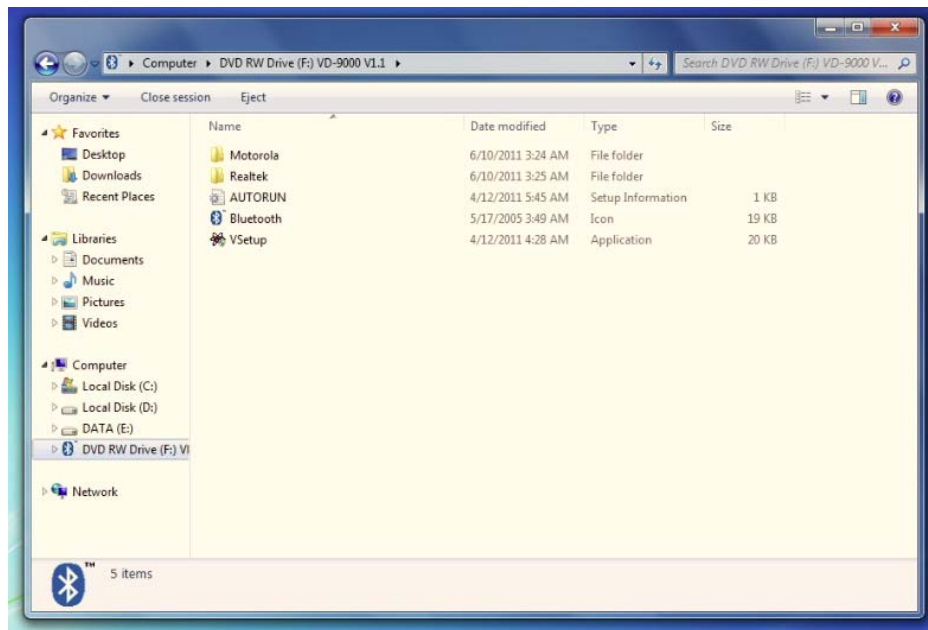


4. Under Windows 7, due to security issue, Windows 7 not allow CD

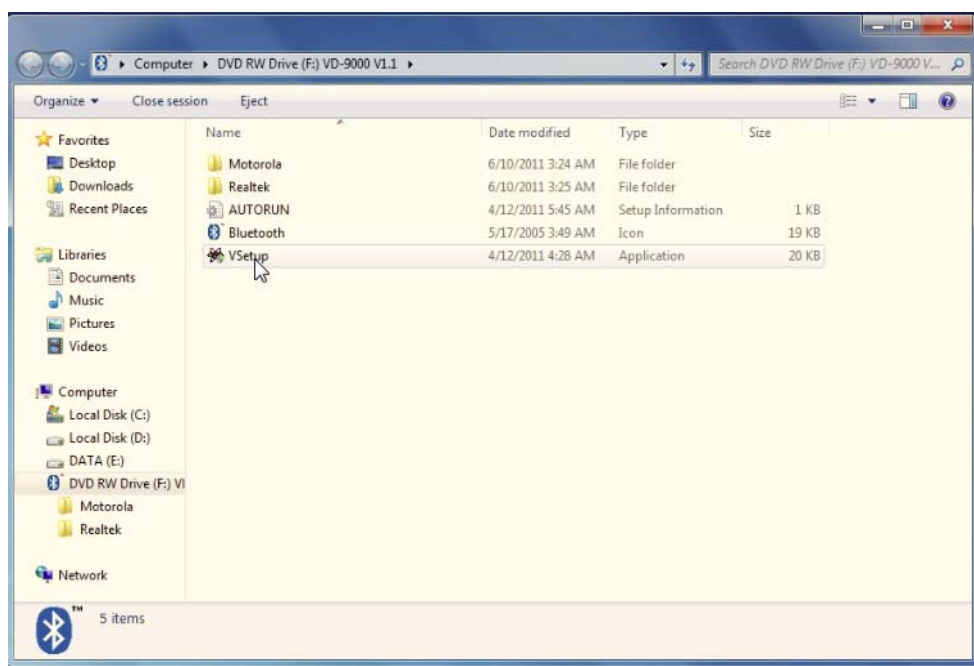
VD-9000 Bluetooth 3.0 Plus High Speed

autorun process instead of show CD content.

- Show CD content



- Double click VSetup.exe to start auto installation process. The process same as Windows XP and Windows Vista.



VD-9000 Bluetooth 3.0 Plus High Speed

5. Once installation finished, you can start to feeling the BT3.0 Plus High Speed. Now three profiles of Motorola BT Stack can support high speed transfer.

- OPP: Object Push Profile.
- FTP: File Transfer Profile.
- PAN: Personal Area Networking Profile.

Federal Communications Commission (FCC) Statement

15.21

You are cautioned that changes or modifications not expressly approved by the part responsible for compliance could void the user's authority to operate the equipment.

15.105(b)

This equipment has been tested and found to comply with the limits for a Class B digital device, pursuant to part 15 of the FCC rules. These limits are designed to provide reasonable protection against harmful interference in a residential installation.

This equipment generates uses and can radiate radio frequency energy and, if not installed and used in accordance with the instructions, may cause harmful interference to radio communications. However, there is no guarantee that interference will not occur in a particular installation. If this equipment does cause harmful interference to radio or television reception, which can be determined by turning the equipment off and on, the user is encouraged to try to correct the interference by one or more of the following measures:

- Reorient or relocate the receiving antenna.
- Increase the separation between the equipment and receiver.
- Connect the equipment into an outlet on a circuit different from that to which the receiver is connected.
- Consult the dealer or an experienced radio/TV technician for help.

This device complies with part 15 of the FCC Rules. Operation is subject to the following two conditions:

- 1) this device may not cause interference and
- 2) this device must accept any interference, including interference that may cause undesired operation of the device.

This equipment complies with FCC radiation exposure limits set forth for an uncontrolled environment. End users must follow the specific operating instructions for satisfying RF exposure compliance. This transmitter must not be co-located or operating in conjunction with any other antenna or transmitter.