

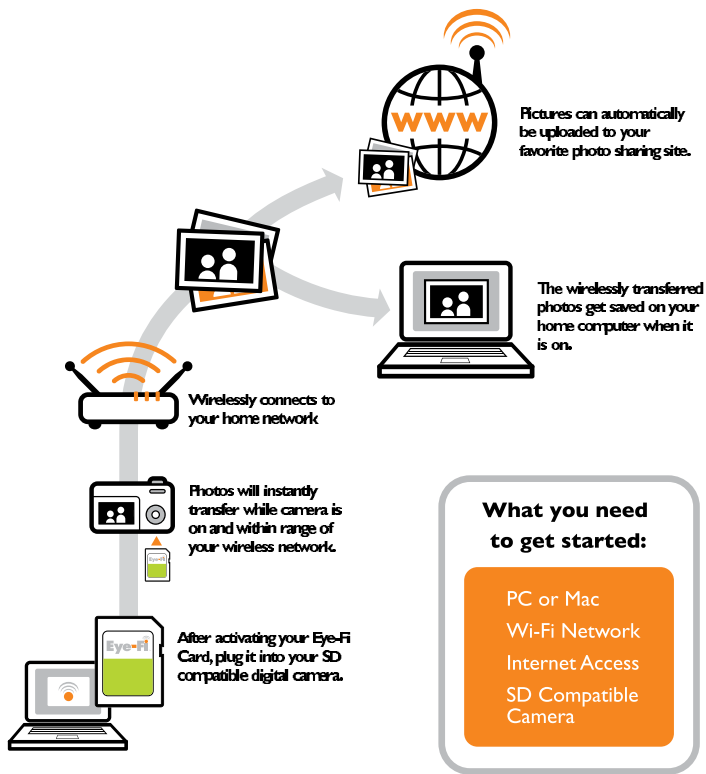
## QUICK START GUIDE | Eye-Fi Share



Eye-Fi™

[www.eye.fi](http://www.eye.fi)

## How It Works

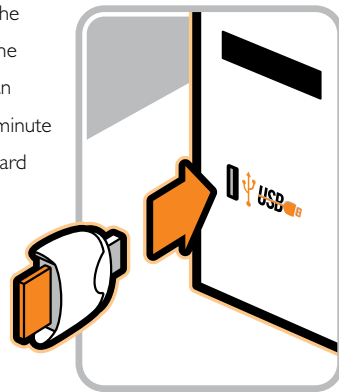


## THANKS FOR BUYING

You're only moments away from wirelessly and automatically saving and sharing your memories. Simply follow this four-step guide to set-up your Eye-Fi Card:


### STEP 1: CONNECT THE CARD READER TO YOUR PC OR MAC

- Your Eye-Fi Card is already inside the supplied card reader. Simply plug the card reader and Eye-Fi Card into an available USB port. Allow up to a minute for your system to recognize the card reader.



## STEP 2: INSTALL THE EYE-FI SOFTWARE

For Mac Installation instructions, see next page.  
If you are using a PC follow the instructions below.

- A new dialog window will appear displaying an Eye-Fi icon and the "Free Your Memories" menu item will be pre-selected. Click OK and follow the on-screen instructions.
- If you did not see the window above, please navigate to My Computer. An Eye-Fi icon will appear representing the card, typically as drive E: or F:
- Open the Eye-Fi drive, and navigate to the START HERE folder; and then to the Windows folder. Double click on the Setup.exe file, to install the Eye-Fi Manager.
- At the end of the installation the Eye-Fi Manager  icon will appear in the task bar.



If you are using a Mac, follow the instructions below:

- A new removable disk will appear on your Desktop called "EYE-FI!"
- Double click and open the Eye-Fi disk, and navigate to the START HERE folder. There, you will find the Mac OS X folder; and inside that folder, the Eye-Fi.dmg file. Double click on the Eye-Fi.dmg file.
- You will see the window to the right:
- Drag the Eye-Fi Manager icon to your Applications folder.
- Go to your Applications folder and launch the Eye-Fi Manager.
- At the end of the installation the Eye-Fi Manager  icon will appear in the menu bar.



---

## STEP 3: CONFIGURE THE EYE-FI CARD

For both PC and Mac users:

- Follow the on-screen instructions to complete the Eye-Fi Card setup process using the Eye-Fi Manager.



---

## STEP 4: INSERT YOUR EYE-FI CARD INTO YOUR CAMERA

- Once the set-up process is complete, the Eye-Fi Manager will ask you to remove your Eye-Fi Card from the card reader. Please insert it into your camera.
- You may need to adjust your camera's power settings to allow for uploads to complete. The Eye-Fi Manager on-screen instructions will help you do this.
- Your Eye-Fi Card can only upload photos while your camera is powered on.




---


## MODIFYING YOUR EYE-FI SETTINGS

The Eye-Fi Manager is a web based application that you can use to control the who/what/where of your Eye-Fi experience. Specifically, you can use the Eye-Fi Manager to customize the following:

- add/change a Wi-Fi network for uploading pictures
- configure for direct import into iPhoto (Mac only)
- change the folder you want to store your pictures in
- create an account with a photo sharing site or social network
- add/change a photo sharing site
- change viewing permissions for your shared pictures from private to public
- review the status of your latest picture uploads
- review your upload history by date
- get help with optimizing your camera settings
- update/upgrade new features on your Eye-Fi card

In order to access Eye-Fi Manager using a PC or Mac, click the  icon in the Windows Task Bar or the Apple Menu Bar.

You can launch the login window within your internet browser:

The Eye-Fi Manager applet should always be running on your system in order to receive new pictures (  icon visible in the Task Bar).

If you do not see the  icon in the Task Bar on your PC or Mac, follow these steps:

PC: Navigate to your Start/Eye-Fi/Eye-Fi Manager menu and launch Eye-Fi Manager.

Mac: Navigate to your Applications folder and start Eye-Fi Manager applet.

## SHARE YOUR MEMORIES

Never got around to sharing your photos from the family picnic or your best friend's wedding? You're not alone. Start sharing today.

The Eye-Fi Card is the world's first wireless SD memory card. It uploads photos automatically from your camera to your computer and your favorite photo or social networking website for printing or sharing.

Kodak Gallery

shutterfly

WAL-MART  
DIGITAL PHOTO CENTER

COSTCO

flickr

Picasa Web Albums

Windows Live

photobucket

SmugMug

facebook

snapfish

webshots  
don't blink

VOX

PhotoVista

RITZPIX

TypePad

phanfare

dotphoto

Sharpcast

bluestring

## EYE-FI & NIKON



The D60 is the world's first Eye-Fi enhanced camera. It provides you with stunning picture quality and versatility in an easy-to-use, compact camera design. With 10.2 effective megapixels and a wealth of innovative and user-friendly features, the D60 enables

both photo enthusiasts and those new to digital SLR photography to capture incredible images like never before.

When used with an Eye-Fi card the D60 automatically adjusts its power settings for an even better wireless upload experience. Easily and effortlessly share your

memories on my Picturetown, the smart photo storage and sharing service from Nikon.

For more information go to:  
[www.NikonUSA.com](http://www.NikonUSA.com)  
[www.myPicturetown.com](http://www.myPicturetown.com)



---

## VISIT US ONLINE

To learn more about Eye-Fi products and services, to receive additional support or to view our comprehensive FAQ, visit us online at [www.eye.fi](http://www.eye.fi)

### Warranty and Support

90-day limited warranty.

### Customer Care

877-873-9334 (toll-free)

Monday through Friday; 6AM to 6PM (PT)

Saturday; 8AM to 2PM (PT)

Sunday - Closed

### Email

[support@eye.fi](mailto:support@eye.fi)

### Help Site

<http://support.eye.fi>

### FCC Information:

This Equipment has been tested and found to comply with the limits for a Class B digital device, pursuant to Part 15 of the FCC rules. These limits are designed to provide reasonable protection against harmful interference in a residential installation. This equipment generates, uses and can radiate radio frequency energy and, if not installed and used in accordance with the instructions, may cause harmful interference to radio communications. However, there is no guarantee that interference will not occur in a particular installation. If this equipment does cause harmful interference to radio or television reception, which can be determined by turning the equipment off and on, the user is encouraged to try to correct the interference by one or more of the following measures:

- Reorient or relocated the receiving antenna
- Increase the separation between the equipment and receiver
- Connect the equipment into an outlet on a circuit different from that to which the receiver is connected.
- Consult the dealer or an experienced radio/TV technician for help.

This device complies with Part 15 of the FCC Rules. Operation is subject to the following two conditions: (1) this device may not cause harmful interference, and (2) this device must accept any interference received including interference that may cause undesired operation.

Changes or modifications not expressly approved by the party responsible for compliance could void the user's authority to operate the equipment.

To comply with the FCC RF exposure compliance requirements, this device and its antenna must not be co-located or operate in conjunction with any other antenna or transmitter.

© 2008 Eye-Fi, Inc. All rights reserved. SD Logo is a trademark of the SD Card Association. Wi-Fi is a registered trademark of the Wi-Fi Alliance. All other trade names mentioned in the Quick Start Guide or other documentation are for identification purposes only and may be trademarks of their respective holders.



Visit us online at [www.eyefi](http://www.eyefi)