

QUICK START GUIDE

You're only moments away from setting your memories free. Simply follow this four-step guide to install your Eye-Fi Card:

STEP 1: CONNECT THE CARD READER TO YOUR PC OR MAC

- Your Eye-Fi Card is already inside the supplied card reader. Simply plug the card reader into an available USB port. Allow up to a minute for your system to recognize the card reader.



1

STEP 2: INSTALL THE EYE-FI SOFTWARE

If you are using a PC:

- A new dialog window will appear displaying an Eye-Fi icon and the “Free Your Memories” menu item will be pre-selected. Click OK and follow the on-screen instructions.
- If you did not see the window above, please navigate to My Computer. An Eye-Fi icon will appear representing the card, typically as drive E: or F:



2

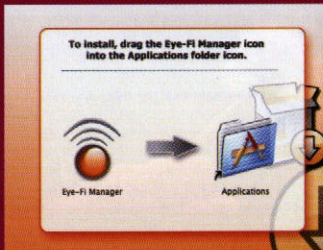
- Open the Eye-Fi drive, and navigate to the START HERE folder, and then to the Windows folder. Double click on the Setup.exe file, to install the Eye-Fi Manager.
- At the end of the installation the Eye-Fi Manager will launch automatically.



3

If you are using a Mac:

- A new removable disk will appear on your Desktop called "Eye-Fi."
- Double click and open the Eye-Fi disk, and navigate to the START HERE folder. There, you will find the Mac OS X folder, and inside that folder, the *Eye-Fi.dmg* file. Double click on the *Eye-Fi.dmg* file.
- You will see the window below:

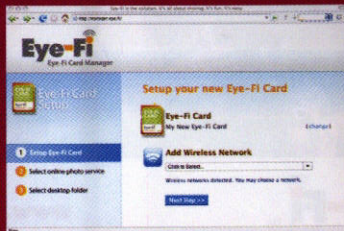


- Drag the Eye-Fi Manager icon to your Applications folder.
- Go to your Applications folder and launch the Eye-Fi Manager.

STEP 3: CONFIGURE THE EYE-FI CARD

For both PC and Mac users:

- Follow the on-screen instructions to complete the Eye-Fi Card registration process using the Eye-Fi Manager.



STEP 4: INSERT YOUR EYE-FI CARD INTO YOUR CAMERA

- Once the registration process is complete, the Eye-Fi Manager will ask you to remove your Eye-Fi Card from the card reader. Please insert it into your camera.



- Your Eye-Fi Card can only upload photos while your camera is powered on. You may need to adjust your camera's power settings to allow for uploads to complete. The Eye-Fi Manager on-screen instructions will help you do this.

MODIFYING YOUR EYE-FI SETTINGS

Anytime you would like to modify your Eye-Fi Card settings, please do the following:

If you are using a PC:

- Launch the Eye-Fi Manager from the Start menu, under Eye-Fi.

If you are using a Mac:

- Navigate to the Applications folder, and launch the Eye-Fi Manager.

VISIT US ONLINE

To learn more about Eye-Fi products and services, to receive additional support or to view our comprehensive FAQ, visit us online at www.eyefi.fi

FCC Information:

This Equipment has been tested and found to comply with the limits for a Class B digital device, pursuant to Part 15 of the FCC rules. These limits are designed to provide reasonable protection against harmful interference in a residential installation. This equipment generates, uses and can radiate radio frequency energy and, if not installed and used in accordance with the instructions, may cause harmful interference to radio communications. However, there is no guarantee that interference will not occur in a particular installation. If this equipment does cause harmful interference to radio or television reception, which can be determined by turning the equipment off and on, the user is encouraged to try to correct the interference by one or more of the following measures:

- Reorient or relocate the receiving antenna.
- Increase the separation between the equipment and receiver.
- Connect the equipment into an outlet on a circuit different from that to which the receiver is connected.
- Consult the dealer or an experienced radio/TV technician for help.

This device complies with Part 15 of the FCC Rules. Operation is subject to the following two conditions: (1) this device may not cause harmful interference, and (2) this device must accept any interference received, including interference that may cause undesired operation.

Changes or modifications not expressly approved by the party responsible for compliance could void the user's authority to operate the equipment.

To comply with the FCC RF exposure compliance requirements, this device and its antenna must not be co-located or operate in conjunction with any other antenna or transmitter.

©2007 Eye-Fi, Inc. All rights reserved. SD Logo is a trademark of the SD Card Association. Wi-Fi is a registered trademark of the WiFi Alliance. All other trade names mentioned in the Quick Start Guide or other documentation are for identification purposes only and may be trademarks of their respective holders.