

ΚΟΛΜΤΑΣ 

KDC400 User Manual

CE 2200

November. 2011

COPYRIGHT, LICENSE, and WARNING PAGE

Copyright© 2011 by KoamTac, Inc. All rights reserved.

No part of this publication may be reproduced or used in any form, or by any electrical or mechanical means, without permission in writing from KoamTac, Inc. The material in this manual is subject to change without notices. KoamTac reserves the right to make changes to any product to improve reliability, function, or design. KoamTac doesn't assume any product liability arising out of, or in connection with, the application or use of any product, circuit, or application described herein. Follow all warnings and instructions marked on manual and units. Use only the power source specified in this manual or marked on the units.

May be covered under one or more pending and/or US Patents, including US Pat. No. 7,769,917; 7,954,710.

KDC® is a registered trademark and property of KoamTac, Inc.

KoamTac® is a registered trademark and property of KoamTac, Inc.

KTSync® is a registered trademark and property of KoamTac, Inc.

TO PREVENT FIRE OR SHOCK HAZARD, DO NOT EXPOSE THIS UNIT TO ANY TYPE OF MOISTURE. DO NOT LOOK DIRECTLY INTO LASER OR POINT THE LASER INTO ANOTHER PERSON'S EYES. EXPOSURE TO THE BEAM MAY CAUSE EYE DAMAGE.



CAUTION:

Changes or modifications not expressly approved by the manufacturer responsible for compliance could void the user's authority to operate the equipment.

WARNING:

This device complies with part 15 of the FCC Rules. Operation is subject to the following two conditions:

(1) This device may not cause harmful interference, and (2) this device must accept any interference received, including interference that may cause undesired operation.

INFORMATION TO USER:

This equipment has been tested and found to comply with the limit of a Class B digital device, pursuant to Part 15 of the FCC Rules. These limits are designed to provide reasonable protection against harmful interference in a residential installation. This equipment generates uses and can radiate radio frequency energy and, if not installed and used in accordance with the instructions, may cause harmful interference to radio communications. However, there is no guarantee that interference will not occur in a particular installation; if this equipment does cause harmful interference to radio or television reception, which can be determined by turning the equipment off and on, the user, is encouraged to try to correct the interference by one or more of the following measures:

1. Reorient / Relocate the receiving antenna.
2. Increase the separation between the equipment and receiver.
3. Connect the equipment into an outlet on a circuit difference from that to which the receiver is connected.
4. Consult the dealer or an experienced radio/TV technician for help.

WARNING: RISK OF EXPLOSION IF BATTERY IS REPLACED BY AN INCORRECT TYPE. DISPOSE USED BATTERIES ACCORDING TO THE INSTRUCTIONS.

Hardware Specifications

Physical Characteristics

Barcode Model (Basic)

- **Size** : 2.4" x 3.7" x 0.4~0.7"
(62mm x 95mm x 10~19mm)
- **Weight** : 3.3 oz. (94 grams)

Barcode/MSR Model (Basic)

- **Size** : 2.4" x 4.7" x 0.4~0.7"
(62mm x 120mm x 10~20mm)
- **Weight** : 4.0 oz. (115 grams)

Electrical Characteristics

Battery : Lithium-Ion (3.7V DC, 1200mAh)

Charging : Via USB connector

Typical Operating Current : 300mA@3.3V

Scanning Performance

1D Laser : 100scans per second

2D Image : 752 x 480 CMOS sensor

User Environment

Drop Spec : 5 feet (1.5m)

Operating : 32°F (0°C) ~ 113°F (45°C)

Storage : -4°F (-20°C) ~ 113°F (45°C)

Humidity : 5% ~ 85% (noncondensing)

Interfaces

Bluetooth® V2.1+EDR, Class 2,
HID/SPP/MFi (Optional 2 ports)

Functionality

Memory Flash ROM : 256KB

Memory RAM : 64KB

Microprocessor : ARM7, 32 bits

Real-time Clock : Quartz RTC

Buzzer : 92dB

Button : 2 Scan, 1 Up, 1 Down

LED : 1

Barcode Symbologies

1 Dimensional

EAN, UPC, Code 39, Code 93, Code 128, Codabar,
Interleaved 2 of 5, GS1-128, Code 3 of 5

2 Dimensional

All major 1D, 2D, Postal, OCR-A/B codes

MSR

- Comply with ISO7810/7811/7812 (Triple track) or JIS6220 (Japan double sided track)
- **Life** : Minimum 500,000 swipes
- **Swipe speed** : 3.9 to 50 inch/sec (10 to 150 cm/sec)

Wedging & Synchronization

- Keyboard wedge function
- Add-on prefixes and suffixes
- Barcode option selection

Regulatory Conformance

EMC - CE, FCC, MIC, TELEC

Models

KDC410 – 1D Barcode Sled

KDC415 – 1D Barcode/MSR Sled

KDC420 – 2D Barcode Sled

KDC425 – 2D Barcode/MSR Sled

KDC430 – MSR Sled

KDC4xx – Custom model for a Smartphone

Package Contents

1 SLED with rechargeable battery,

1 SLED charging USB cable, 1 Smartphone charging
USB cable, 1 Hand strap, 1 Software CD

For more information, contact us at:

KoamTac, Inc.
116 Village Boulevard, Suite 200 Princeton,
NJ 08540, USA

Tel +1-609-734-4335

Fax +1-609-228-4373

E-mail info@koamtac.com

www.koamtac.com



1. INTRODUCTION

Congratulations on purchasing KoamTac's revolutionary barcode scanner and data collector. Lightweight and compact, with a user-friendly design and superior functionality, KoamTac's KDC works in a variety of portable applications. Use it independently or as an accessory to your PC, PDA, or smartphone. To find out more about KoamTac, Inc. and our family of products, visit us at www.koamtac.com.

FEATURES	KDC100	KDC200	KDC250	KDC300	KDC400
USB CONNECTIONS	2	1	1	1	1
RECHARGEABLE BATTERY	YES	YES	YES	YES	YES
SCAN ENGINE	Laser	Laser	Laser	Imager	Laser/ Imager
AUTOMATIC DATA UPLOAD	YES	YES	YES	YES	YES
STORES 10,000+ BARCODES	YES	YES	YES	YES	No
KTSYNC® SOFTWARE	YES	YES	YES	YES	YES
SDK FOR DEVELOPERS	YES	YES	YES	YES	YES
SUPPORTS MICROSOFT® WINDOWS XP, VISTA, 7 & MOBILE 5.0+	YES	YES	YES	YES	YES
ANDROID, BLACKBERRY, IOS	NO	YES	YES	YES	YES
BLUETOOTH	NO	YES	YES	YES	YES
GPS	NO	NO	YES	NO	NO

Table 1 - Features of KDC

1.1 KDC Package

The standard KDC package contains:

1. One KDC Barcode Data Collector
2. One USB Cable
3. One Lanyard (KDC100/200/250/300) or One Hand Strap (KDC400)
4. KoamTac Installation CD with
 - KTSync[®] for Microsoft Windows XP, Vista, 7 and Mobile 5.0+
 - KDC Device Driver
 - User Manual
5. One Protective KDC Rubber Case (KDC100/200/250/300) or One Smartphone Protective Rubber Case (KDC400)

NOTE: Depending on your region or distributor, package contents may vary.



Figure 1 – KDC Package

1.2 KDC Characteristics

Before you use your KDC, please become familiar with its physical characteristics. Refer to Figure 2 and Figure 3 below which indicate placement of scan and scroll buttons, OLED display, LEDs, and ports on your KDC. All KDC models are similar except for the KDC100 which includes an additional USB connector.

KDC100 Barcode Reader and Data Collector

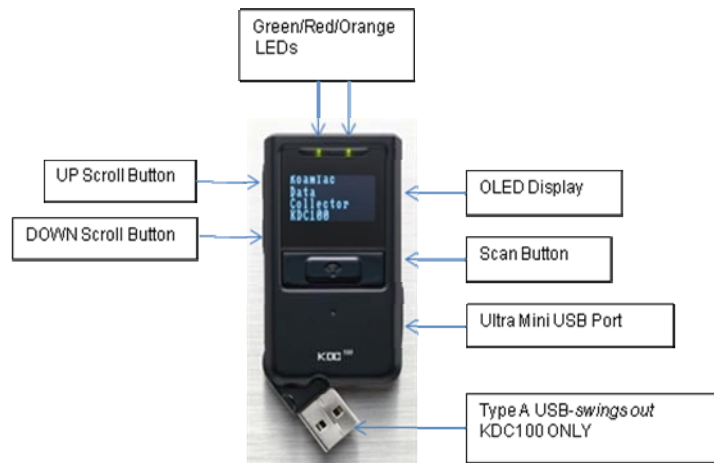
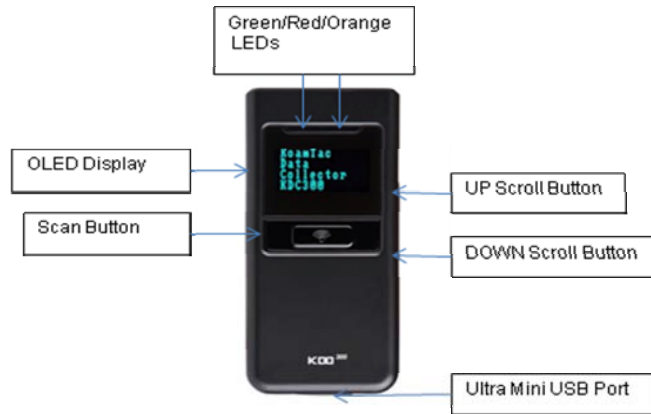


Figure 2 - Characteristics of KDC100

KDC200 / KDC250 / KDC300 Barcode Reader and Data Collector



KDC200



KDC250/300



KDC400

Figure 3 - Characteristics of KDC200 / KDC250 / KDC300

2. INSTALLATION

2.1 KoamTac Installation Wizard

Windows XP

WARNING: DO NOT CONNECT KDC TO USB PORT PRIOR TO INSTALLATION

1. Insert KoamTac Installation CD into your computer's CD drive.
2. Click **Start** icon then **My Computer** icon. A listing of devices on your computer will be displayed including the disk drive containing the KoamTac Installation CD.
3. Click on the KoamTac Installation CD icon then click on the Setup directory. Click on the PC_Setup.exe file which executes the KTSync Setup Wizard.

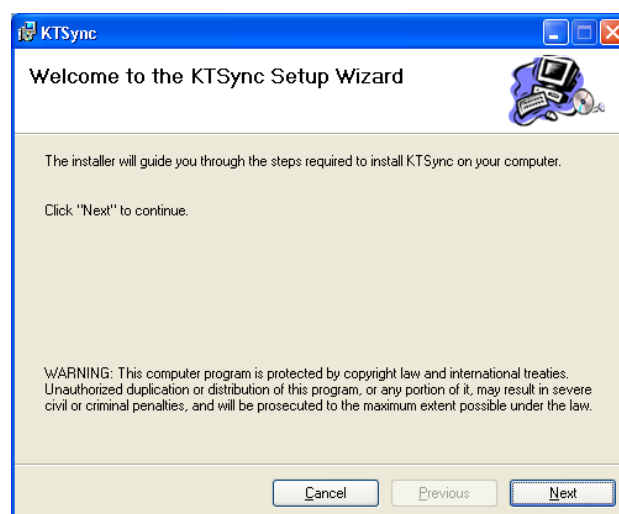
NOTES

- If KTSync Setup Wizard locates an older version of KTSync on your computer, you will be prompted to remove the older program before installing the new version. Select Remove KTSync then click Finish. When removal is complete, click Close. Go to Step 2 to run KTSync Setup Wizard.
- If you have any problems, please refer to the Manual Installation section.

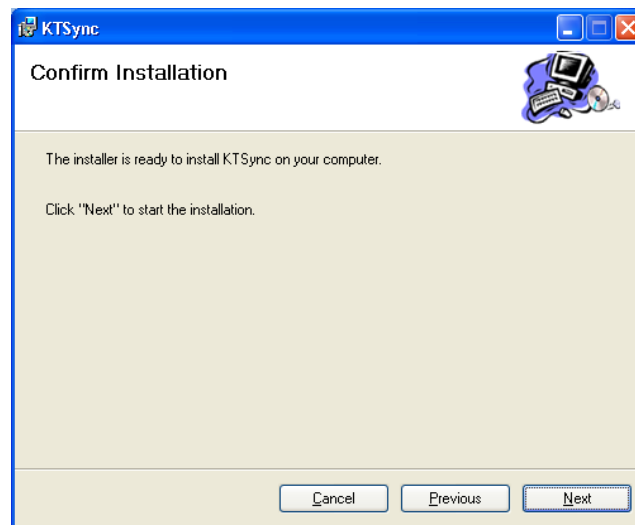
KTSync Setup Wizard

Below are the screen images you will see during the installation of KTSync.

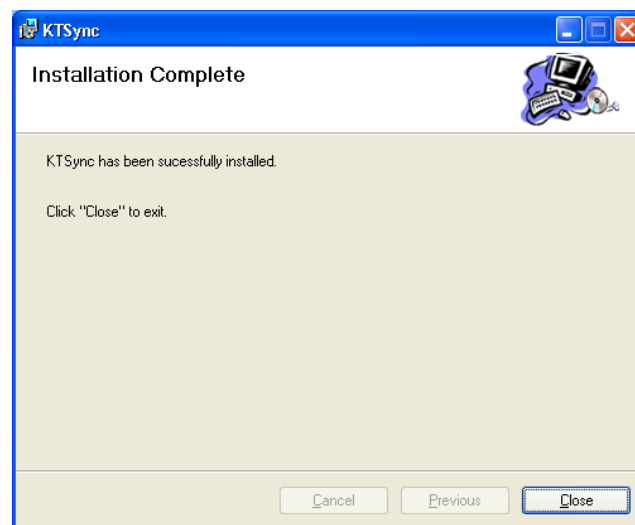
- Click **Next** icon in KTSync Setup Wizard window



- Click **Next** icon in KTSync Confirm Installation window



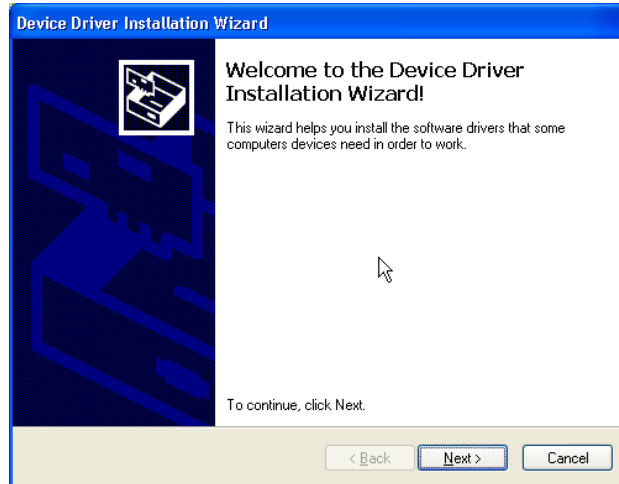
- Within a few minutes, installation of KTSync will be complete. Click **Close** icon and wait for the Device Driver Installation Wizard to load.



Device Driver Installation Wizard

Below are the screen images you will see during the installation of the KDC Device Driver.

- Click **Next** icon in Device Driver Installation Wizard window



- Click **Continue Anyway** icon in Software Installation Logo testing window



- Click **Finish** icon in Device Driver Installation Wizard window



Connect KDC to Computer

Using the USB cable included with the KDC, follow the directions below.

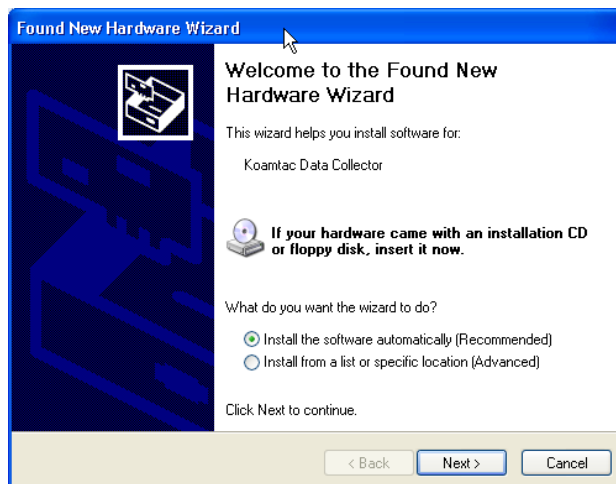
- Connect the cable's ultra mini USB connector to the KDC.
- Connect the cable's Type A USB connector to your PC.
- Wait until your computer beeps and/or displays the message *Found New Hardware*.

Found New Hardware Wizard

- Select "No, not this time" option in Found New Hardware Wizard and click Next if your PC pops up the following Found New Hardware Wizard.



- Select "Install the software automatically (Recommended)" option in Found New Hardware Wizard and click Next if your PC pops up the following Found New Hardware Wizard.



- Click **Continue Anyway** icon in Software Installation Logo testing window

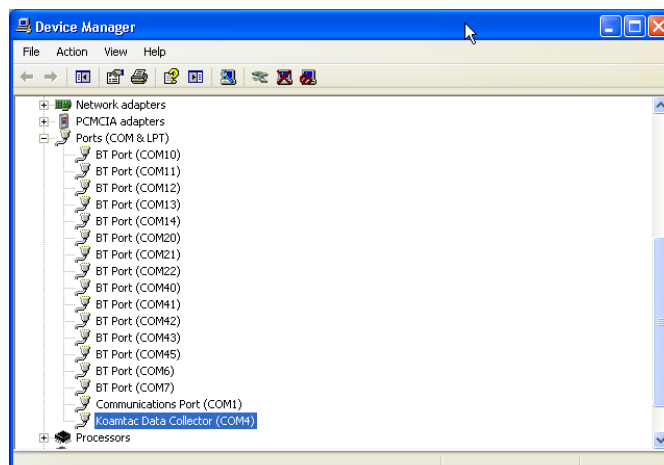


- Click **Finish** icon in Found New Hardware Wizard window



Verify COM Port Address

- User can verify installed COM Port in Device Manager



Vista and Windows 7

WARNING: DO NOT CONNECT KDC TO USB PORT PRIOR TO INSTALLATION

1. Insert KoamTac Installation CD into your computer's CD drive.
2. Click **Start** icon then **My Computer** icon. A listing of devices on your computer will be displayed including the disk drive containing the KoamTac Installation CD.
3. Click on the KoamTac Installation CD icon then click on the Setup directory. Click on the PC_Setup.exe file which executes the KTSync Setup Wizard.

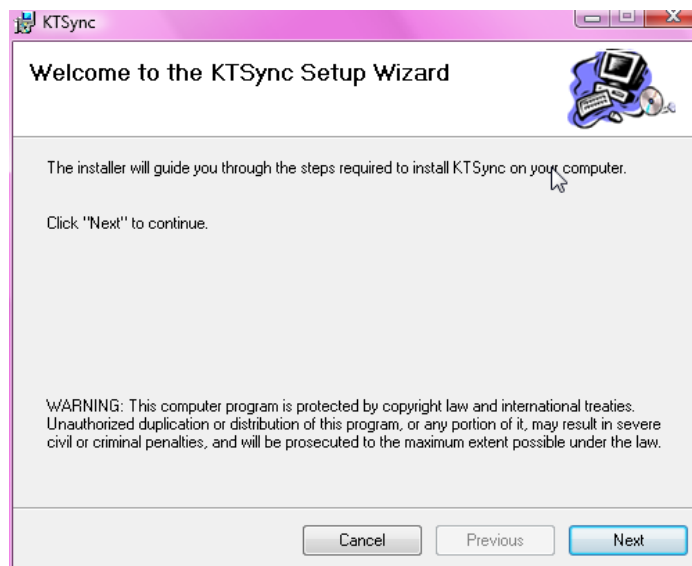
NOTES

- If KTSync Setup Wizard locates an older version of KTSync on your computer, you will be prompted to remove the older program before installing the new version. Select Remove KTSync then click Finish. When removal is complete, click Close. Go to Step 2 to run KTSync Setup Wizard.
- If you have any problems, please refer to the Manual Installation section.

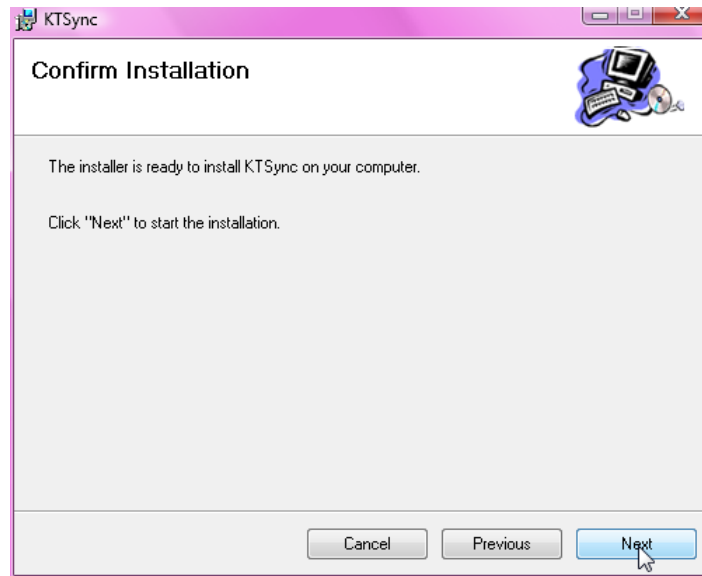
KTSync Setup Wizard

Below are the screen images you will see during the installation of KTSync.

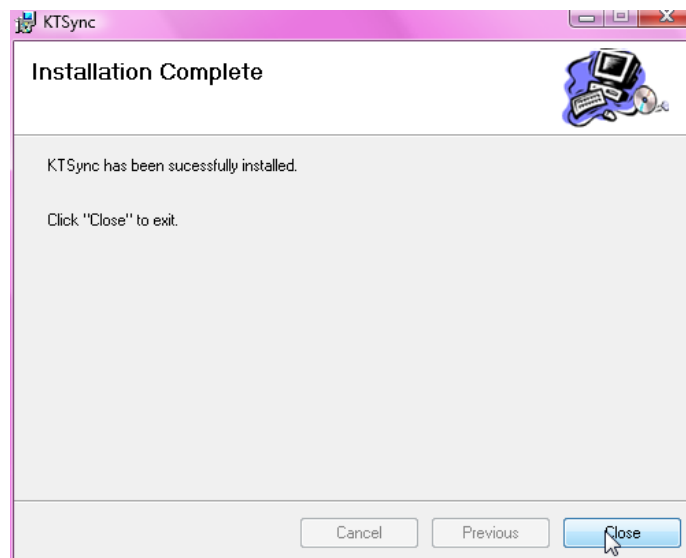
- Click **Next** icon in KTSync Setup Wizard window



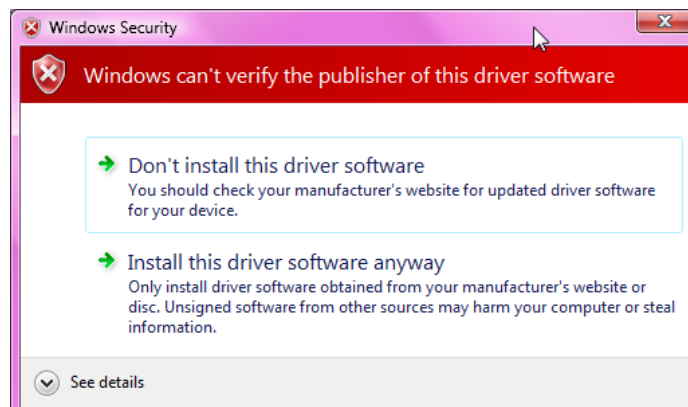
- Click **Next** icon in KTSync Confirm Installation window



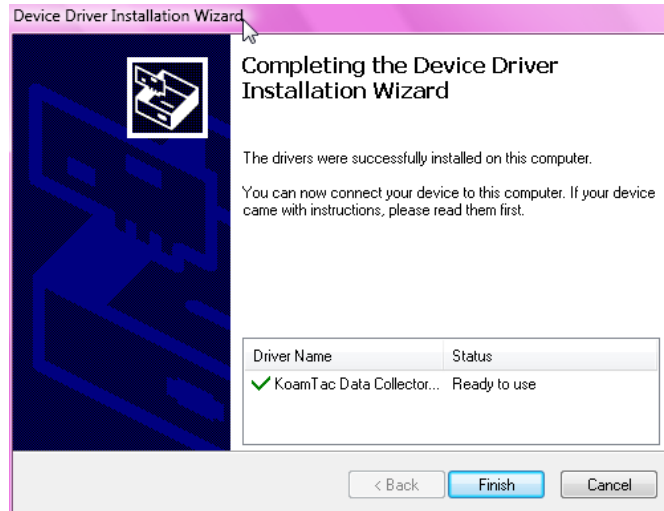
- Click **Close** icon in KTSync Installation Complete window and wait for Device Driver Installation Wizard



- Click **Install this driver software anyway** in Windows Security window



- Click **Finish** icon in Device Driver Installation Wizard window



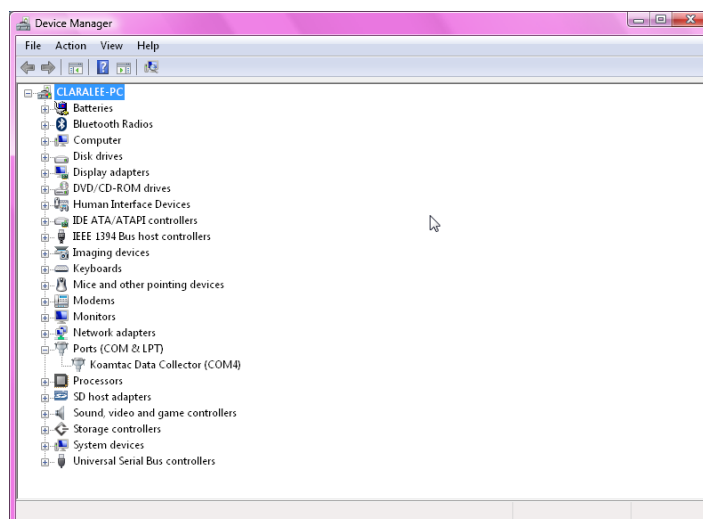
Connect KDC to Computer

Using the USB cable included with the KDC, follow the directions below.

- Connect ultra mini USB connector to the KDC.
- Connect Type A USB connector to your PC.
- Wait until your computer beeps and/or displays the message *Found New Hardware*.

Verify COM Port Address

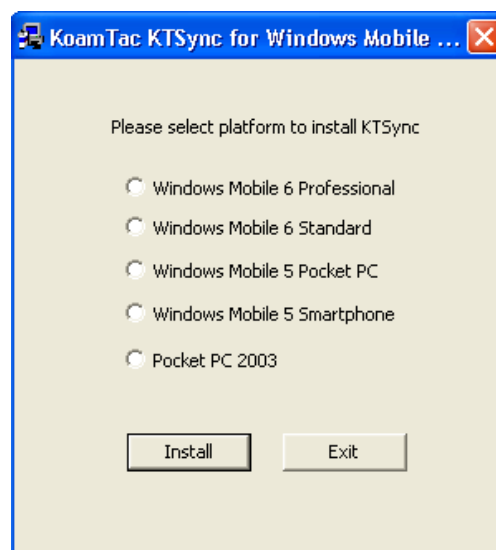
- User can verify installed COM Port in Device Manager



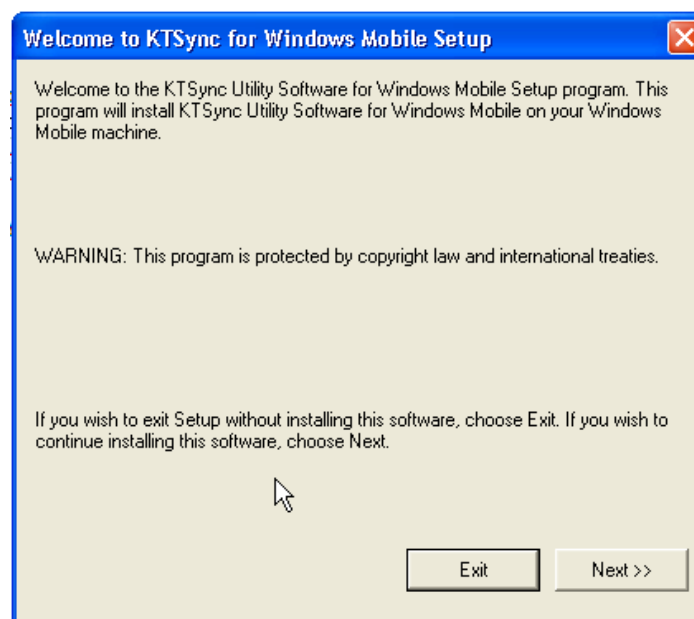
Windows Mobile 5.0+

WARNING: PLEASE CONNECT PDA TO PC PRIOR TO INSTALLATION

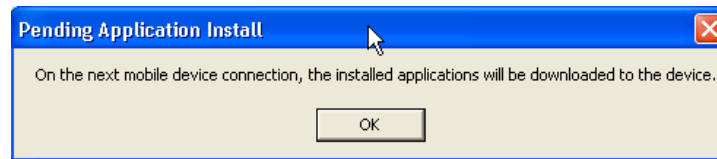
1. PC_Setup.exe creates Mobile_Setup.exe file under C:\Program Files\KoamTac\KTSync\Windows.Mobile directory
 2. Execute Mobile_Setup.exe
- Select Windows Mobile version to install.



- Click Next icon.



- Click **OK** icon in Pending Application Install window



- Follow the instructions on PDA screen

COM port Assignment

- User should assign a COM port for KDC before using pKTSync.
- User should pair KDC with PDA using PDA *Bluetooth* manager and assign a COM port for *Bluetooth* communication
- Please refer to the PDA manual for the details of COM port assignment method

Android

- Download and install aKTSync from the Android Market.
http://www.androidzoom.com/android_applications/productivity/ktsync_luxv.html

Blackberry

- Download and install bKTSync from the Blackberry App World.
<http://appworld.blackberry.com/webstore/content/16861?lang=en>

iPad/iPhone/iPod touch

- Download and install iKTSync from the Apple App Store.
<http://itunes.apple.com/us/app/ktsync/id372916602?mt=8>



2.2 Manual Installation

NOTE: *If you have the KDC100, it has two ports, Ultra Mini and standard Type A which swings out. See Figure 2 for more details.*

Windows XP, Vista, and 7

1. Insert the KoamTac Installation CD into your computer's disk drive.
2. Create a directory called KoamTac on your computer.
3. Copy XP.Vista.7 directory from KoamTac CD to KoamTac directory. The XP.Vista.7 directory contains KTSync[®] programs for Microsoft[®] Windows XP, Vista, Windows 7 and user manuals.
4. Connect KDC cable to ultra mini USB connector on the KDC.
5. Connect KDC cable to Type A USB connector on your computer. Wait until your computer beeps and/or displays the message *New Hardware Found*. You will be prompted to search for a device driver for KDC.
6. Browse then select *KTReader.inf* file from the KoamTac directory created in Step 2. Follow screen prompts to continue with the device driver installation.

NOTE: *KTReader.inf is the device driver for 32bit Microsoft[®] Windows XP, Vista, and Windows 7. If you have a 64bit computer, use KTReader.inf file from XP.Vista.64bit folder in the KoamTac directory.*

Windows Mobile 5.0+

Please connect your Windows Mobile PDA to your computer before software installation.

- Create a directory and name it KoamTac on the PDA.
- Copy Mobile5.0_6.0 directory from KoamTac CD to PDA KoamTac directory.
- Mobile5.0_6.0 contains KTSync[®] programs for Microsoft[®] Windows Pocket PC 2003, Mobile 5.0, Mobile 6.0 Standard, and Mobile6.0 Professional. It also includes KDC User Manual.

3. OPERATING THE KDC

3.1 Getting Started

Attach Hand Strap to KDC

To prevent possible damage to the KDC, we **strongly** recommend wearing it around your hand by the included hand strap. Also, please don't swing KDC by the hand strap because contact with another object may cause it to malfunction or become damaged.

To attach the hand strap:

1. Fit the thin end of hand strap through the pillar of the KDC.
2. Loop the thick end of strap through the thin loop
3. Pull the strap tight to secure

Charge KDC Battery

Prior to using the KDC, you must charge its battery. To charge the battery, follow these directions.

1. Connect the KDC cable to the ultra mini USB connector on the KDC.
2. Connect the KDC cable to Type A USB connector on your computer.
3. Your KDC battery will begin charging. Within a few minutes, two small LEDs on the front panel will illuminate orange. When the battery is fully charged, the LEDs will illuminate green.

KDC100	KDC200	KDC250/300
<i>2 Hours</i>	<i>2 Hours</i>	<i>4 Hours</i>

Table 2 – Approximate Time to Charge KDC Battery

Configure KDC

The KDC is designed to meet the data collection requirements of many different industries in a variety of dynamic situations. To perform well in these diverse environments, the KDC is designed to be configured easily and quickly. But, to perform at its maximum level, the KDC must be configured properly. Until you are familiar with configuring the KDC, it is recommended that you DO NOT modify the KDC settings. The KDC can be configured in three different methods which are explained in Section 3.3 – KDC Menus, Chapter 4 –Synchronization, and Appendix C – Special Barcodes.

CONFIGURATION METHODS FOR THE KDC

- KDC Menu
- KTSync® Software
- Special Barcodes



Figure 4 - Location of Scroll Buttons

3.2 Basics

Reading Barcodes

Reading a barcode is simple. Point the KDC at a barcode and press the scan button. Be sure to point the scan engine at the barcode, not at your face, and make sure to position the light beam on the barcode. If the barcode is scanned successfully, you will hear one beep and the LEDs will illuminate in green.

If the scan was unsuccessful, you will hear two beeps and the LEDs will illuminate in red. If you have problems scanning a barcode, try the following suggestions while pointing the KDC at the barcode and depressing the scan button.

- Modify the angle of the KDC in relation to the barcode, making the angle bigger or smaller as needed.
- Modify the distance between the barcode and the KDC, moving closer or further away as needed.
- Check option settings defined in the KDC menu section and change options as needed.
- Check that the barcode's width does not exceed the light beam's width and vice versa.

Synchronizing Barcode Data to PC

Use the KTSync[®] program to synchronize barcode data from the KDC to your PC. Please refer to Chapter 4 for details.

3.3 KDC Menus

Top Menu	Sub Menu	Options	KDC410(i)	KDC415(i)	KDC420(i)	KDC425(i)	KDC430(i)
Set Barcodes (410/415)	EAN13	Enabled/Disabled	Enabled	Enabled	N/A	N/A	N/A
	EAN8	Enabled/Disabled	Enabled	Enabled	N/A	N/A	N/A
	UPCA	Enabled/Disabled	Enabled	Enabled	N/A	N/A	N/A
	UPCE	Enabled/Disabled	Enabled	Enabled	N/A	N/A	N/A
	CODE39	Enabled/Disabled	Enabled	Enabled	N/A	N/A	N/A
	ITF14	Enabled/Disabled	Enabled	Enabled	N/A	N/A	N/A
	CODE128	Enabled/Disabled	Enabled	Enabled	N/A	N/A	N/A
	I2of5	Enabled/Disabled	Enabled	Enabled	N/A	N/A	N/A
	CODABAR	Enabled/Disabled	Enabled	Enabled	N/A	N/A	N/A
	GS1-128	Enabled/Disabled	Enabled	Enabled	N/A	N/A	N/A
	CODE93	Enabled/Disabled	Enabled	Enabled	N/A	N/A	N/A
	CODE35	Enabled/Disabled	Enabled	Enabled	N/A	N/A	N/A
	BooklandEAN	Enabled/Disabled	Disabled	Disabled	N/A	N/A	N/A
	EAN13withAddon	Enabled/Disabled	Disabled	Disabled	N/A	N/A	N/A
	EAN8withAddon	Enabled/Disabled	Disabled	Disabled	N/A	N/A	N/A
	UPCAwithAddon	Enabled/Disabled	Disabled	Disabled	N/A	N/A	N/A
UPCEwithAddon	Enabled/Disabled	Disabled	Disabled	N/A	N/A	N/A	
Set Barcodes (420/425)	1D Symbology	Codabar	N/A	N/A	Enabled	Enabled	N/A
		Code 11	N/A	N/A	Enabled	Enabled	N/A
		Code 32	N/A	N/A	Enabled	Enabled	N/A
		Code 39	N/A	N/A	Enabled	Enabled	N/A
		Code 93	N/A	N/A	Enabled	Enabled	N/A
		Code 128	N/A	N/A	Enabled	Enabled	N/A
		EAN-8	N/A	N/A	Enabled	Enabled	N/A
		EAN-13	N/A	N/A	Enabled	Enabled	N/A
		GS1 Composit	N/A	N/A	Enabled	Enabled	N/A
		I2of5	N/A	N/A	Enabled	Enabled	N/A
		Matrix 2of5	N/A	N/A	Enabled	Enabled	N/A
		MSI	N/A	N/A	Enabled	Enabled	N/A
		Plessey	N/A	N/A	Enabled	Enabled	N/A
		PosiCode	N/A	N/A	Enabled	Enabled	N/A
		GS1 Omni	N/A	N/A	Enabled	Enabled	N/A
		GS1 Limited	N/A	N/A	Enabled	Enabled	N/A
		GS1 Expanded	N/A	N/A	Enabled	Enabled	N/A
		S2of5 Ind	N/A	N/A	Enabled	Enabled	N/A
		S2of5 IATA	N/A	N/A	Enabled	Enabled	N/A
		TCL39	N/A	N/A	Enabled	Enabled	N/A
		Telepen	N/A	N/A	Enabled	Enabled	N/A
Trioptic	N/A	N/A	Enabled	Enabled	N/A		
UPCA	N/A	N/A	Enabled	Enabled	N/A		
UPCE0	N/A	N/A	Enabled	Enabled	N/A		
UPCE1	N/A	N/A	Enabled	Enabled	N/A		

	2D Symbology	AztecCode	N/A	N/A	Enabled	Enabled	N/A		
		AztecRunes	N/A	N/A	Enabled	Enabled	N/A		
		CodablockF	N/A	N/A	Enabled	Enabled	N/A		
		Code16K	N/A	N/A	Enabled	Enabled	N/A		
		Code49	N/A	N/A	Enabled	Enabled	N/A		
		DataMatrix	N/A	N/A	Enabled	Enabled	N/A		
		MaxiCode	N/A	N/A	Enabled	Enabled	N/A		
		MicroPDF	N/A	N/A	Enabled	Enabled	N/A		
		PDF417	N/A	N/A	Enabled	Enabled	N/A		
		QRCode	N/A	N/A	Enabled	Enabled	N/A		
	HanXin Code	N/A	N/A	Enabled	Enabled	N/A			
	Postal Codes	Postnet	N/A	N/A	Enabled	Enabled	N/A		
		PlanetCode	N/A	N/A	Enabled	Enabled	N/A		
		UK Post	N/A	N/A	Enabled	Enabled	N/A		
		Canada Post	N/A	N/A	Enabled	Enabled	N/A		
		Kix Post	N/A	N/A	Enabled	Enabled	N/A		
		Australia Post	N/A	N/A	Enabled	Enabled	N/A		
		Japan Post	N/A	N/A	Enabled	Enabled	N/A		
		China Post	N/A	N/A	Enabled	Enabled	N/A		
	OCR	Korea Post	N/A	N/A	Enabled	Enabled	N/A		
		OCR Off	N/A	N/A	Enabled	Enabled	N/A		
		OCR A	N/A	N/A	Disabled	Disabled	N/A		
		OCR B	N/A	N/A	Disabled	Disabled	N/A		
		OCR USC	N/A	N/A	Disabled	Disabled	N/A		
		OCR MICR	N/A	N/A	Disabled	Disabled	N/A		
	Barcode Options (410/415)	Barcode Options (410/415)	OCR SEMI	N/A	N/A	Disabled	Disabled	N/A	
			CodaBar_NoStartStop Chars	Enabled/Disabled	Disabled	Disabled	N/A	N/A	N/A
			UPCE_as_UPCA	Enabled/Disabled	Disabled	Disabled	N/A	N/A	N/A
			EAN8_as_EAN13	Enabled/Disabled	Disabled	Disabled	N/A	N/A	N/A
			UPCE_as_EAN13	Enabled/Disabled	Disabled	Disabled	N/A	N/A	N/A
ReturnCheckDigit			Enabled/Disabled	Disabled	Disabled	N/A	N/A	N/A	
VerifyCheckDigit			Enabled/Disabled	Disabled	Disabled	N/A	N/A	N/A	
UPCA_as_EAN13			Enabled/Disabled	Disabled	Disabled	N/A	N/A	N/A	
I2of5_VerifyCheckDigit			Enabled/Disabled	Disabled	Disabled	N/A	N/A	N/A	
Code39_VerifyCheckDigit			Enabled/Disabled	Disabled	Disabled	N/A	N/A	N/A	
I2of5_ReturnCheckDigit			Enabled/Disabled	Disabled	Disabled	N/A	N/A	N/A	
Code39_ReturnCheckDigit			Enabled/Disabled	Disabled	Disabled	N/A	N/A	N/A	
UPCE_ReturnCheckDigit			Enabled/Disabled	Enabled	Enabled	N/A	N/A	N/A	
UPCA_ReturnCheckDigit			Enabled/Disabled	Enabled	Enabled	N/A	N/A	N/A	
EAN8_ReturnCheckDigit	Enabled/Disabled	Enabled	Enabled	N/A	N/A	N/A			
EAN13_ReturnCheckDigit	Enabled/Disabled	Enabled	Enabled	N/A	N/A	N/A			
Barcode Options (420/425)	Codabar	Tx StartStop(Enable/disable)	N/A	N/A	Disabled	Disabled	N/A		
		Check Digit(DoNotVerify/VerifyDONotTX/Verify DoTx)	N/A	N/A	DoNotVerify	DoNotVerify	N/A		
		Concatenate(Disable/Enable/Required)	N/A	N/A	Enabled	Enabled	N/A		
	Code39	Tx StartStop(Enable/disable)	N/A	N/A	Disabled	Disabled	N/A		

	Check Digit(DoNotVerify/VerifyDONOTX/Verify DoTx)	N/A	N/A	DoNotVerify	DoNotVerify	N/A
	Append(Enable/Disable)	N/A	N/A	Disabled	Disabled	N/A
	Full ASCII(Enable/Disable)	N/A	N/A	Disabled	Disabled	N/A
I2of5	Check Digit(DoNotVerify/VerifyDONOTX/Verify DoTx)	N/A	N/A	DoNotVerify	DoNotVerify	N/A
Code11	Check Digit(2 digits/1 digit)	N/A	N/A	2 digits	2 digits	N/A
Code128	Concatenate(Disable/Enable)	N/A	N/A	Disabled	Disabled	N/A
Telepen	Output(Original/AIM)	N/A	N/A	AIM	AIM	N/A
UPCA	VerifyChkDgt(Enabled/Disabled)	N/A	N/A	Enabled	Enabled	N/A
	NumberSys(Enabled/Disabled)	N/A	N/A	Enabled	Enabled	N/A
	2DgtAddenda(Enabled/Disabled)	N/A	N/A	Disabled	Disabled	N/A
	5DgtAddenda(Enabled/Disabled)	N/A	N/A	Disabled	Disabled	N/A
	Req. Addenda(Enabled/Disabled)	N/A	N/A	Disabled	Disabled	N/A
	Sep. Addenda(Enabled/Disabled)	N/A	N/A	Enabled	Enabled	N/A
UPCE	Coupon Code(Enabled/Disabled)	N/A	N/A	Enabled	Enabled	N/A
	Expand(Enabled/Disabled)	N/A	N/A	Disabled	Disabled	N/A
	Req. Addenda(Enabled/Disabled)	N/A	N/A	Disabled	Disabled	N/A
	Sep. Addenda(Enabled/Disabled)	N/A	N/A	Enabled	Enabled	N/A
	Check Digit(Enabled/Disabled)	N/A	N/A	Enabled	Enabled	N/A
	NumberSys(Enabled/Disabled)	N/A	N/A	Enabled	Enabled	N/A
	2DgtAddenda(Enabled/Disabled)	N/A	N/A	Disabled	Disabled	N/A
5DgtAddenda(Enabled/Disabled)	N/A	N/A	Disabled	Disabled	N/A	
EAN-13	VerifyChkDgt(Enabled/Disabled)	N/A	N/A	Enabled	Enabled	N/A
	2DgtAddenda(Enabled/Disabled)	N/A	N/A	Disabled	Disabled	N/A
	5DgtAddenda(Enabled/Disabled)	N/A	N/A	Disabled	Disabled	N/A
	Req. Addenda(Enabled/Disabled)	N/A	N/A	Disabled	Disabled	N/A
	Sep. Addenda(Enabled/Disabled)	N/A	N/A	Enabled	Enabled	N/A
	ISBN Trans.(Enabled/Disabled)	N/A	N/A	Disabled	Disabled	N/A
EAN-8	VerifyChkDgt(Enabled/Disabled)	N/A	N/A	Enabled	Enabled	N/A
	2DgtAddenda(Enabled/Disabled)	N/A	N/A	Disabled	Disabled	N/A
	5DgtAddenda(Enabled/Disabled)	N/A	N/A	Disabled	Disabled	N/A
	Req. Addenda(Enabled/Disabled)	N/A	N/A	Disabled	Disabled	N/A
	Sep. Addenda(Enabled/Disabled)	N/A	N/A	Enabled	Enabled	N/A
MSI	Tx CheckChar(Enabled/Disabled)	N/A	N/A	Disabled	Disabled	N/A
PosiCode	A and B/A&B Limited/A&B LimitedB	N/A	N/A	A&B LimitedB	A&B LimitedB	N/A
GS1	UPCEAN Ver.(Enabled/Disabled)	N/A	N/A	Disabled	Disabled	N/A
	GS1 Emulation(No Emulate/GS1 128 Emul/GS1 Emulate)	N/A	N/A	No Emulate	No Emulate	N/A
PostNet	Tx CheckChar(Enabled/Disabled)	N/A	N/A	Disabled	Disabled	N/A

	PlanetCode	Tx CheckChar(Enabled/Disabled)	N/A	N/A	Disabled	Disabled	N/A
Scan Options	Scan Angle	Narrow/Wide	Wide	Wide	N/A	N/A	N/A
	Filter	Normal/High	Normal	Normal	N/A	N/A	N/A
	Time Out	.5 seconds to 10 seconds	2 second(s)	2 second(s)	2 second(s)	2 second(s)	N/A
	Min. Barcode Length	2 to 36 characters	4 chars	4 chars	4 chars	4 chars	N/A
	Security Level	1 to 4 level	2 level	2 level	N/A	N/A	N/A
	Image Capture	Enabled/Disabled	N/A	N/A	Disabled	Disabled	N/A
	Auto Trigger	Enabled/Disabled	Disabled	Disabled	Disabled	Disabled	N/A
	Reread Delay	Continuous, Short, Medium, Long, Extra Long	Medium	Medium	Medium	Medium	N/A
	Finger Trigger	Enabled/Disabled	N/A	N/A	N/A	N/A	N/A
	Partial Display	Start Position		N/A	N/A	N/A	N/A
No. of Char(s)			N/A	N/A	N/A	N/A	N/A
Action			N/A	N/A	N/A	N/A	N/A
Data Process	Wedge / Store	Wedge Only					Default
		Wedge & Store Always	Default	Default	Default	Default	
		Store Only					
		Save if Sent					
		Save if Not Sent					
	Data Format	Barcode only	Default	Default	Default	Default	N/A
		Packet Data					
	Data Editor/Prefix	Delete	Delete	Delete	Delete	Delete	N/A
	Data Editor/Suffix	Delete	Delete	Delete	Delete	Delete	N/A
	Data Editor/AIM ID	None/In Prefix/In Suffix	None	None	None	None	N/A
	Data Editor/Partial Data	Start Position	1	1	1	1	N/A
		No. of Char(s)	0 chars	0 chars	0 chars	0 chars	N/A
		Action	Select	Select	Select	Select	N/A
	Handshake	Enabled/Disabled	Disabled	Disabled	Disabled	Disabled	N/A
Terminator	None, CR, LF, CR+LF, Tab Right/Left/Down/Up Arrow	CR+LF	CR+LF	CR+LF	CR+LF	CR+LF	
Chk Duplicate	Enabled/Disabled	Disabled	Disabled	Disabled	Disabled	N/A	
Bluetooth	Power	Enabled/Disabled	N/A	N/A	N/A	N/A	N/A
	Pairing	Pairing neighboring Bluetooth devices	N/A	N/A	N/A	N/A	N/A
	Auto Connect	Enabled/Disabled	N/A	N/A	N/A	N/A	N/A
	Auto Power On	Enabled/Disabled	N/A	N/A	N/A	N/A	N/A
	Auto Power On/Power Off Time	Disable, 1sec to 10second(s)	N/A	N/A	N/A	N/A	N/A
	Auto Power Off	Enabled/Disabled	N/A	N/A	N/A	N/A	N/A
	Auto Power Off/Beep Warning	Enabled/Disabled	N/A	N/A	N/A	N/A	N/A
	Auto Power Off/Power Off Time	1 to 30 minutes	N/A	N/A	N/A	N/A	N/A
	PowerOff Msg	Enabled/Disabled	N/A	N/A	N/A	N/A	N/A
	MAC Address	12 Characters Bluetooth MAC Address	N/A	N/A	N/A	N/A	N/A
	BT FW Version	v1.2.xrt Bluetooth Firmware Version	N/A	N/A	N/A	N/A	N/A
	Discovering	Discovering neighboring Bluetooth devices	N/A	N/A	N/A	N/A	N/A
	Connecting to	View Connect to Bluetooth device	N/A	N/A	N/A	N/A	N/A
	Wakeup Nulls	Enabled/Disabled	N/A	N/A	N/A	N/A	N/A
BT Config	ConnectDevice	SPP	Default(410)	Default(415)	Default(420)	Default(425)	Default(430)

		HID iOS					
		iPhone	Default(410i)	Default(415i)	Default(420i)	Default(425i)	Default(430i)
		SPP2.0					
		HID normal					
	Auto Connect	Enabled/Disabled	Disabled	Disabled	Disabled	Disabled	Disabled
	Auto Power On	Enabled/Disabled	Disabled	Disabled	Disabled	Disabled	Disabled
	Auto Power On/Power On Time	Disable, 1sec to 10second(s)	Disabled	Disabled	Disabled	Disabled	Disabled
	Auto Power Off	Enabled/Disabled	Disabled	Disabled	Disabled	Disabled	Disabled
	Auto Power Off/Beep Warning	Enabled/Disabled	Disabled	Disabled	Disabled	Disabled	Disabled
	Auto Power Off/Power Off Time	1 to 30 minutes	5 minutes	5 minutes	5 minutes	5 minutes	5 minutes
	PowerOff Msg	Enabled/Disabled	Disabled	Disabled	Disabled	Disabled	Disabled
	MAC Address	12 Characters <i>Bluetooth</i> MAC Address	N/A	N/A	N/A	N/A	N/A
	BT FW Version	v1.2.xrt Bluetooth Firmware Version	N/A	N/A	N/A	N/A	N/A
	Wakeup Nulls	Enabled/Disabled	Disabled	Disabled	Disabled	Disabled	Disabled
	BT Toggle		Enabled	Enabled	Enabled	Enabled	Enabled
	HID AutoLock	Disabled,1,2,3,4,5,10,15 minutes	1 minutes	1 minutes	1 minutes	1 minutes	1 minutes
	HID Keyboard	US,German,French,Italian,Spanish	US	US	US	US	US
	HID Delay/Initial	Disabled, 1,2,3,5,10 secs	Disabled	Disabled	Disabled	Disabled	Disabled
	HID Delay/Inter char	Disabled,10, 20, 30, 50, 100msec	Disabled	Disabled	Disabled	Disabled	Disabled
	HID Ctrl Char	Disabled, Alt+Numpad, ^4-Character	Disabled	Disabled	Disabled	Disabled	Disabled
BT Service	Power	Enabled/Disabled	Enabled	Enabled	Enabled	Enabled	Enabled
	Pairing	Pairing neighboring Bluetooth devices					
	Discovering	Discovering neighboring <i>Bluetooth</i> devices	N/A	N/A	N/A	N/A	N/A
	Connecting to	View Connect to <i>Bluetooth</i> device	N/A	N/A	N/A	N/A	N/A
	HID Sync						
System Config	Memory Size(3.0 only)	0.5/3.5, 1/3, 2/2, 3/1, 4/0	N/A	N/A	N/A	N/A	N/A
	Memory Status	No. of Stored Barcodes	N/A	N/A	N/A	N/A	N/A
		Free Memory Available	N/A	N/A	N/A	N/A	N/A
	Reset Memory	Memory(Empties Data)					
		Application Memory	N/A	N/A	N/A	N/A	N/A
		BT Registry(KDC100 Not use)	N/A	N/A	N/A	N/A	N/A
	Auto Erase	Enabled/Disabled	Disable	Disable	Disable	Disable	Disable
	Sleep Timeout	Disable, 1sec to 10minute(s)	5 second(s)	5 second(s)	5 second(s)	5 second(s)	5 second(s)
	Date / Time	YYYY:MM:DD &	N/A	N/A	N/A	N/A	N/A
		HH:MM:SS	N/A	N/A	N/A	N/A	N/A
	Battery	% of Battery Charge Available	N/A	N/A	N/A	N/A	N/A
	Version	Firmware Version & Serial No.	N/A	N/A	N/A	N/A	N/A
	Button Lock	Enabled/Disabled	Disabled	Disabled	Disabled	Disabled	Disabled
	Beep Sound	Enabled/Disabled	Enabled	Enabled	Enabled	Enabled	Enabled
	Beep Volume	Low/High	Low	Low	Low	Low	Low
	Auto Exit	Enabled/Disabled	N/A	N/A	N/A	N/A	N/A
Port Status	Enabled/Disabled	N/A	N/A	N/A	N/A	N/A	
Display Format	Time & Battery / Type & Time / Type & Battery / Memory Status / GPS Data(KDC250 only)/Barcode Only	N/A	N/A	N/A	N/A	N/A	

	Menu Barcode	Enabled/Disabled	N/A	N/A	Disabled	Disabled	N/A
	Scrolling	Enabled/Disabled	N/A	N/A	N/A	N/A	N/A
	Brightness	1 to 15 level(8 level)	N/A	N/A	N/A	N/A	N/A
	Factory Default	Restores Default Settings					
MSR Config	Data Format	MSR Data Only	Default	Default	Default	Default	N/A
		Packet Data					
	Track Separator		N/A	CR+LF	N/A	CR+LF	CR+LF
	Use Track1		N/A	Yes	N/A	Yes	Yes
	Use Track2		N/A	Yes	N/A	Yes	Yes
	Use Track3		N/A	Yes	N/A	Yes	Yes
	Beep on error reading	Enabled/Disabled	N/A	Disabled	N/A	Disabled	Disabled
	Encryption	Enabled/Disabled	N/A	Enabled	N/A	Disabled	Disabled

Table 3 - KDC Menu Options