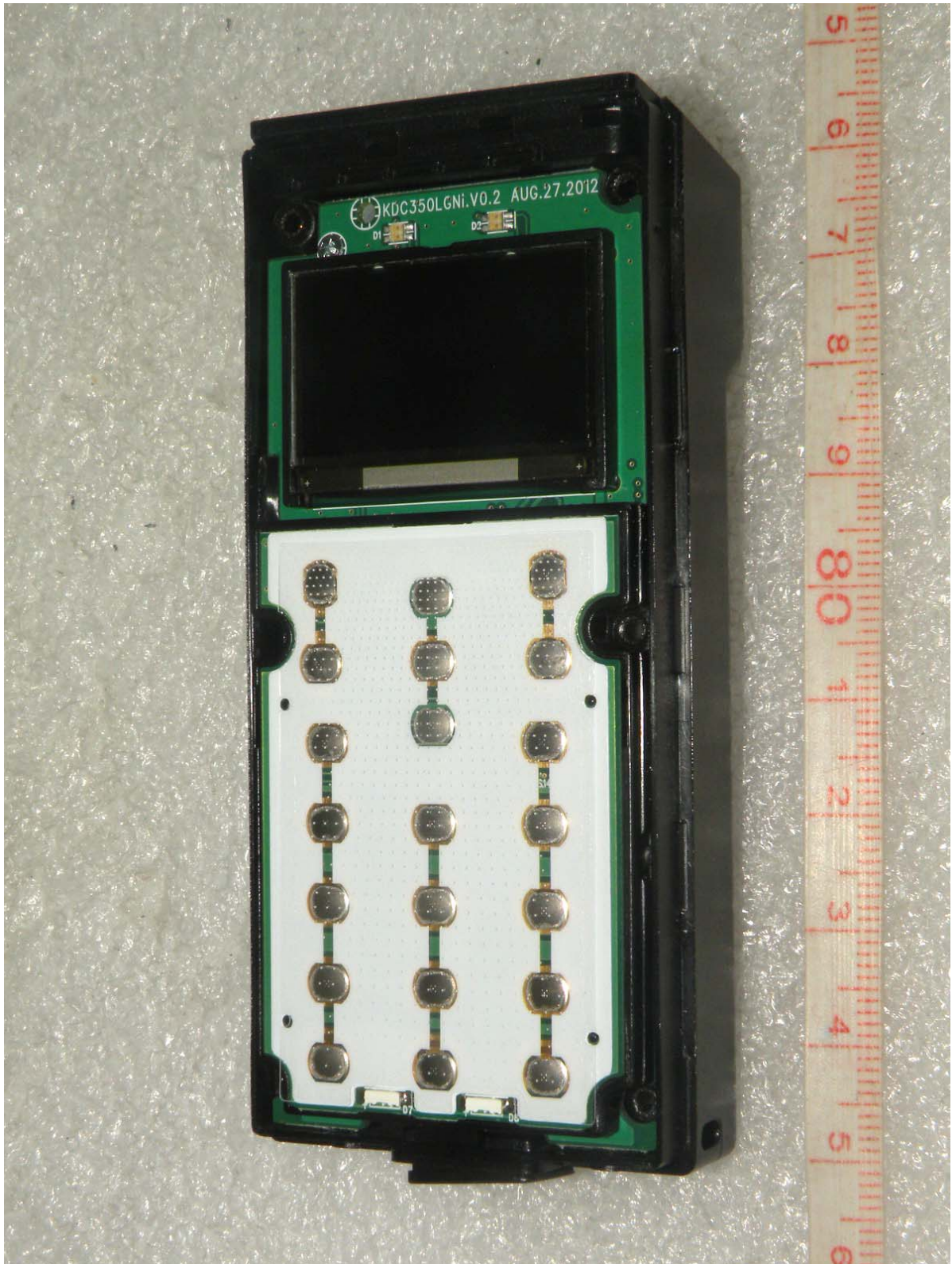


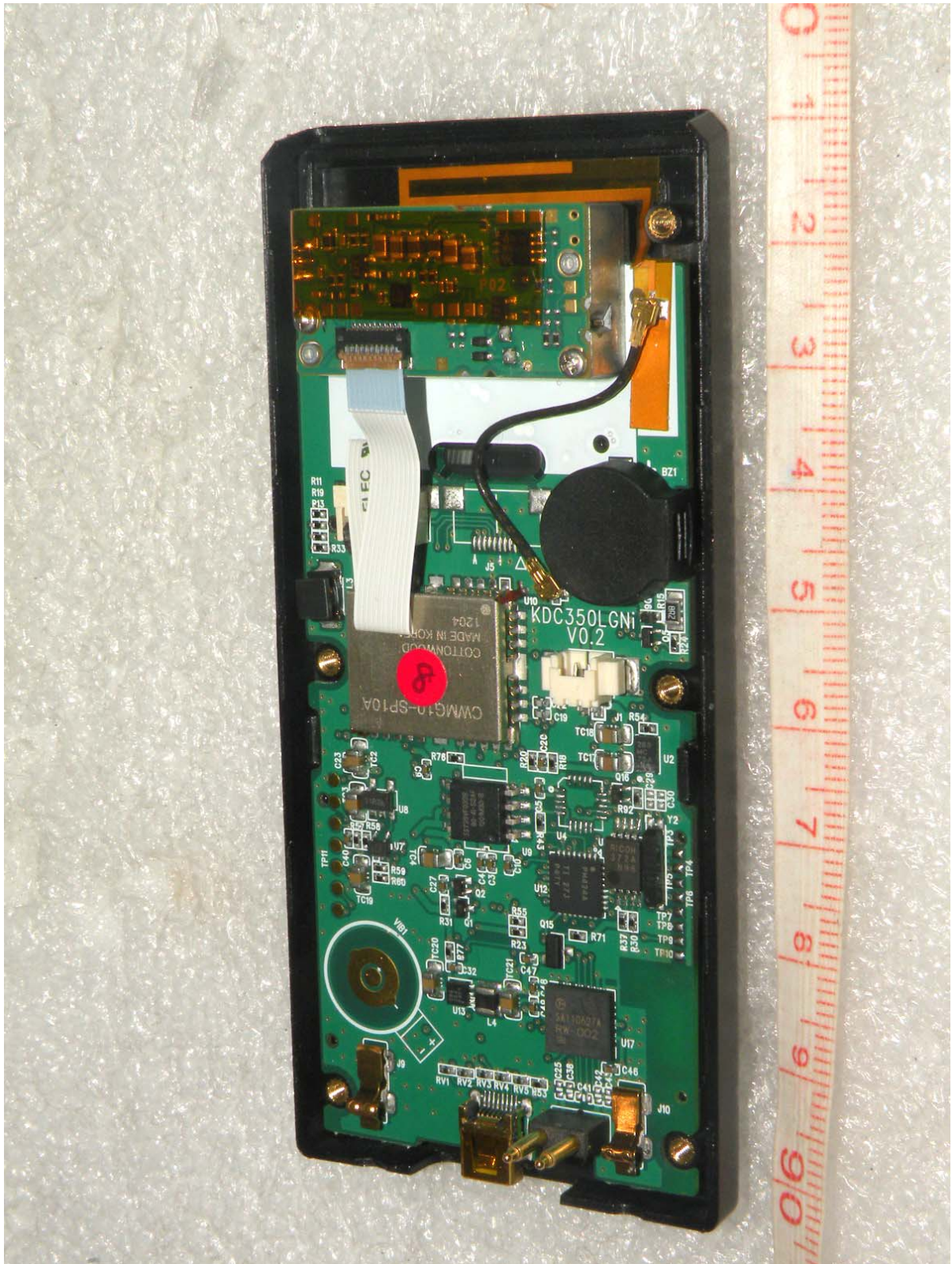
Inside view of EUT



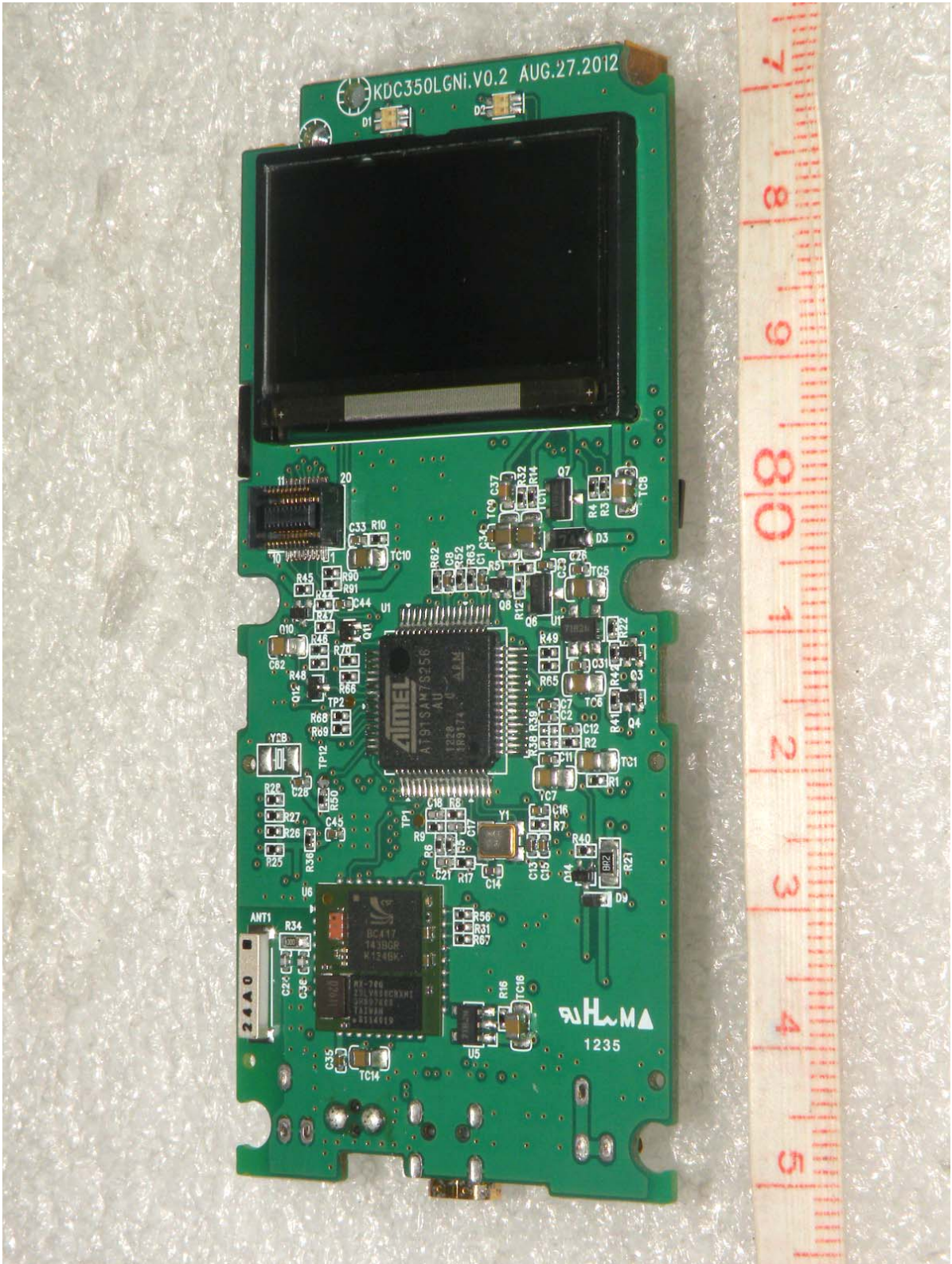
Inside view of EUT



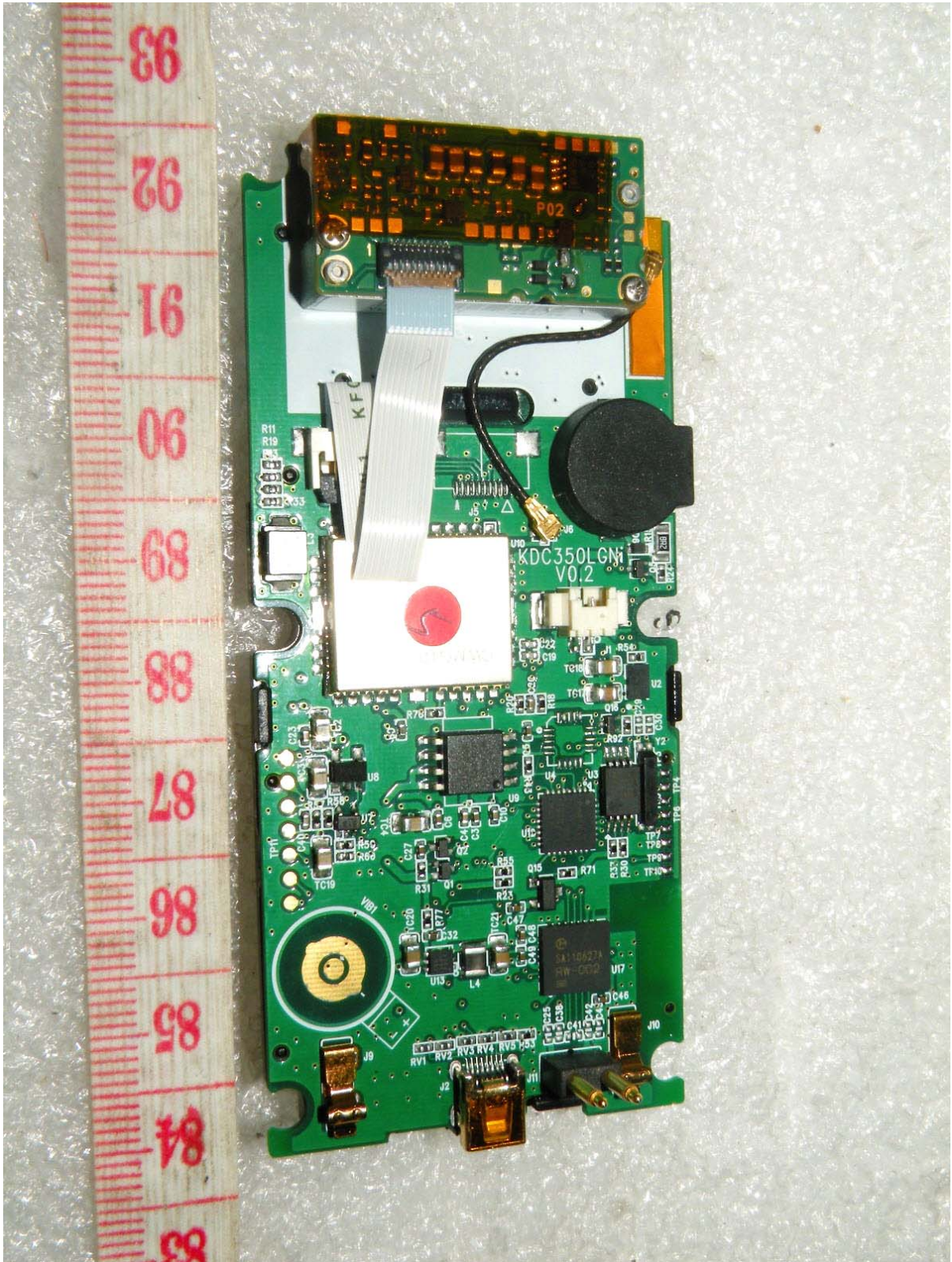
Inside view of EUT



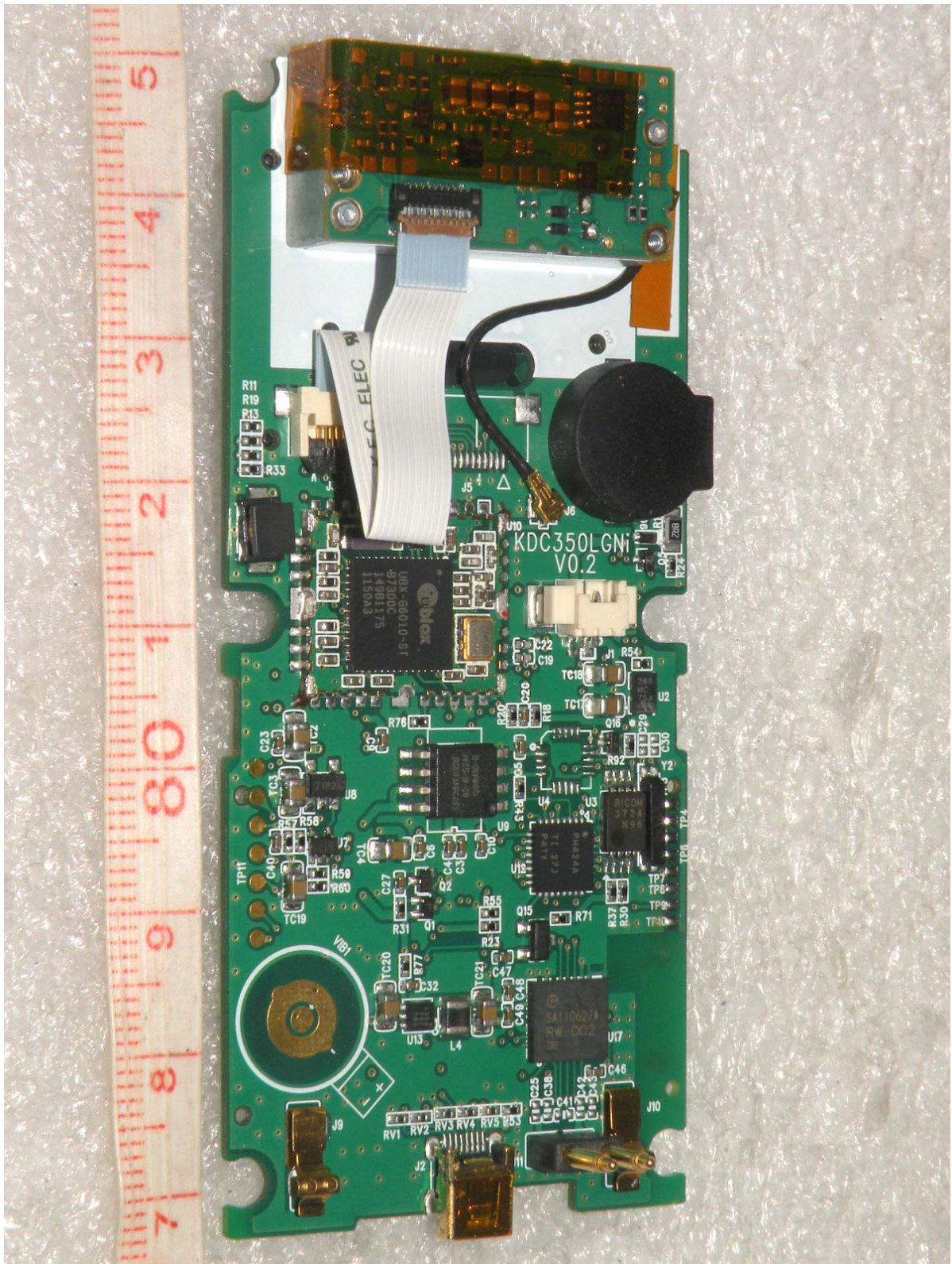
Top side view of main board



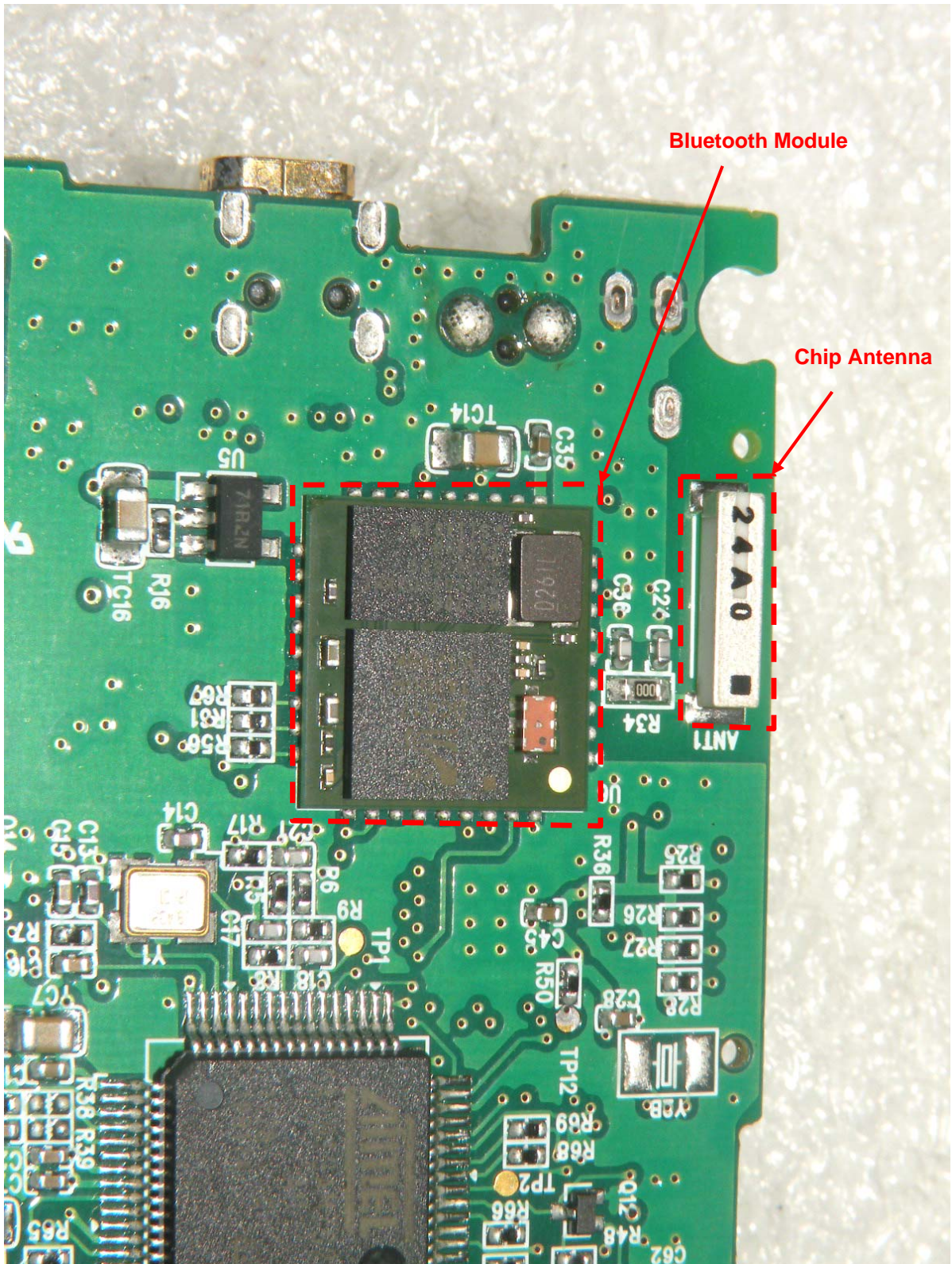
Bottom side view of main board



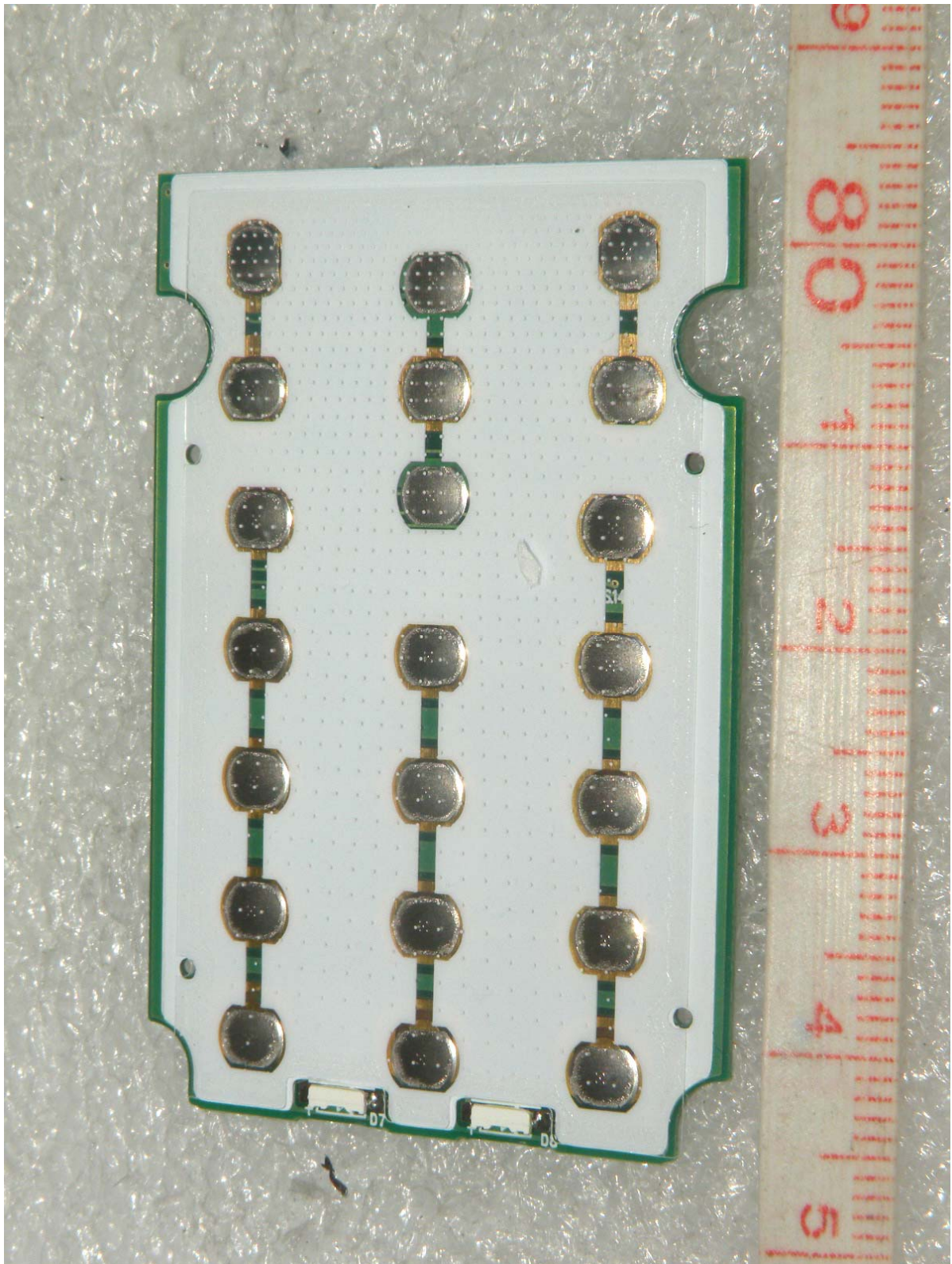
Bottom side view of main board (open case)



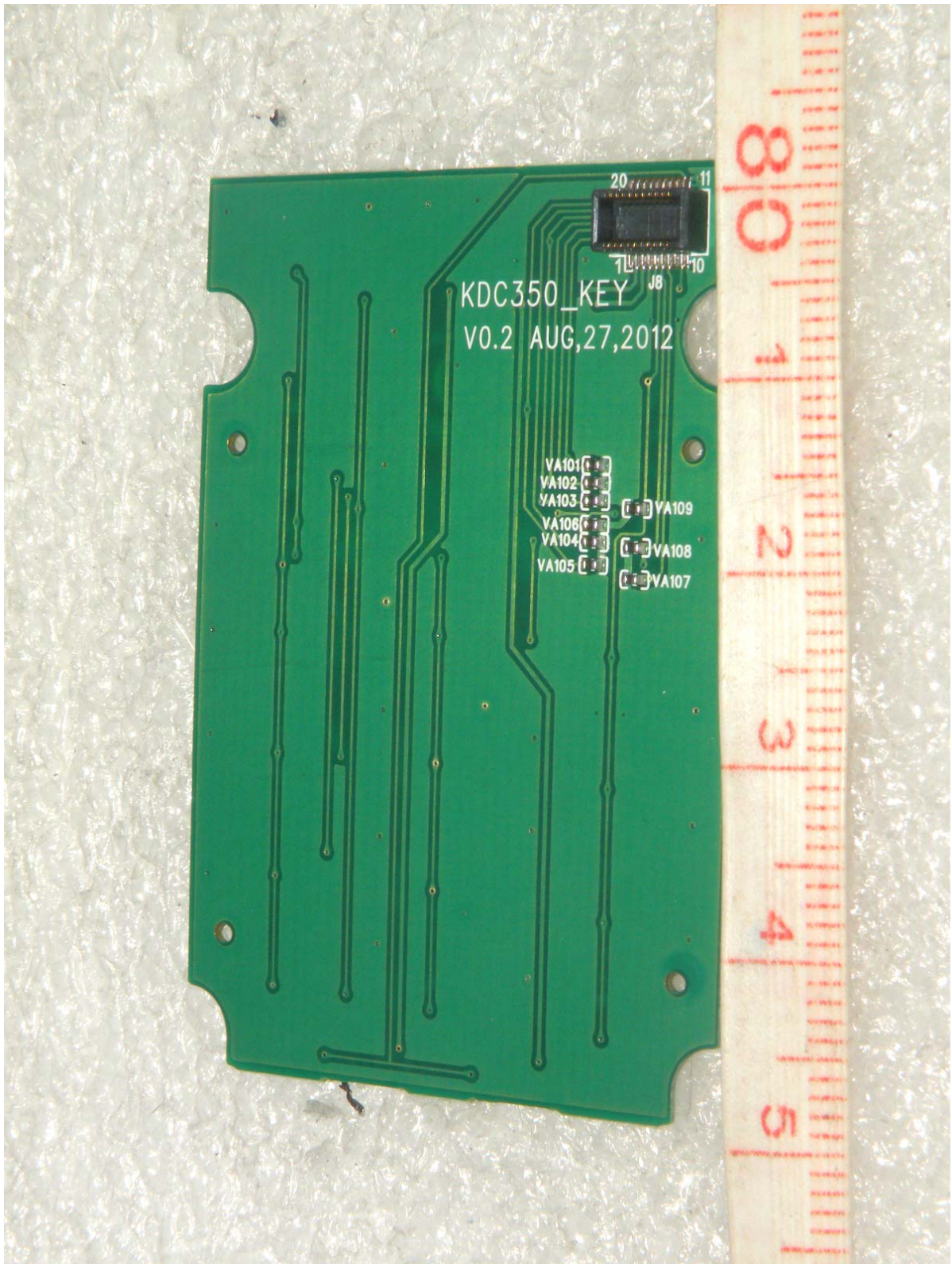
Top side view of Chip Antenna and Bluetooth Module



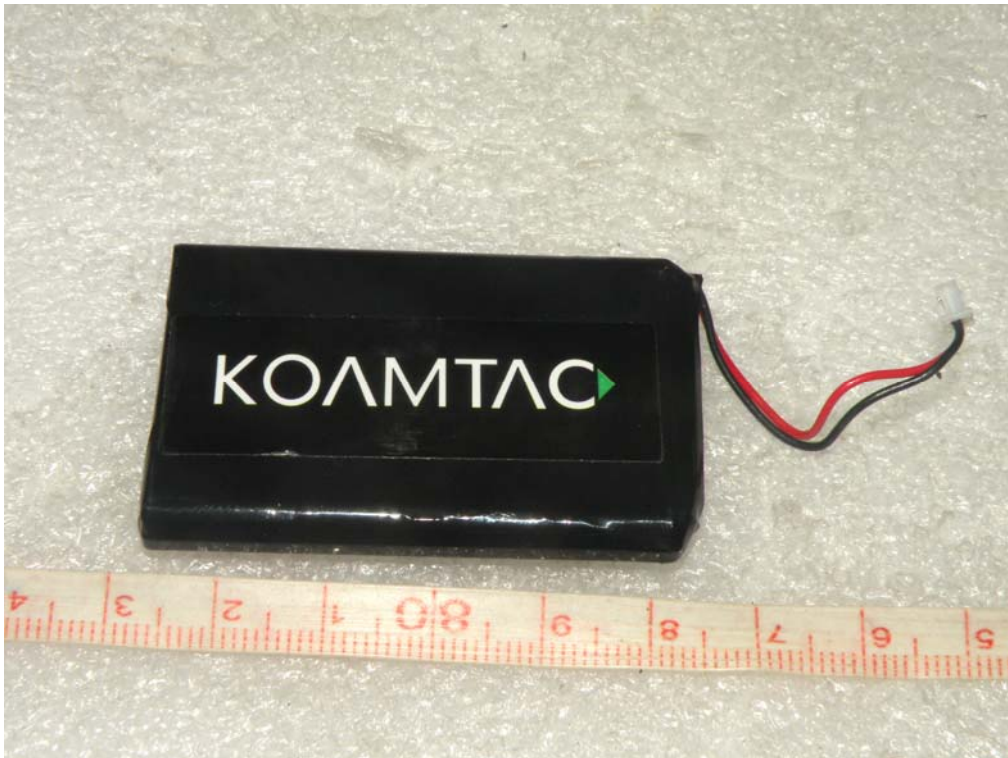
Top side view of Key pad



Bottom side view of Key pad



View of Rechargeable Li-ion battery



View of Rechargeable Li-ion battery label

