



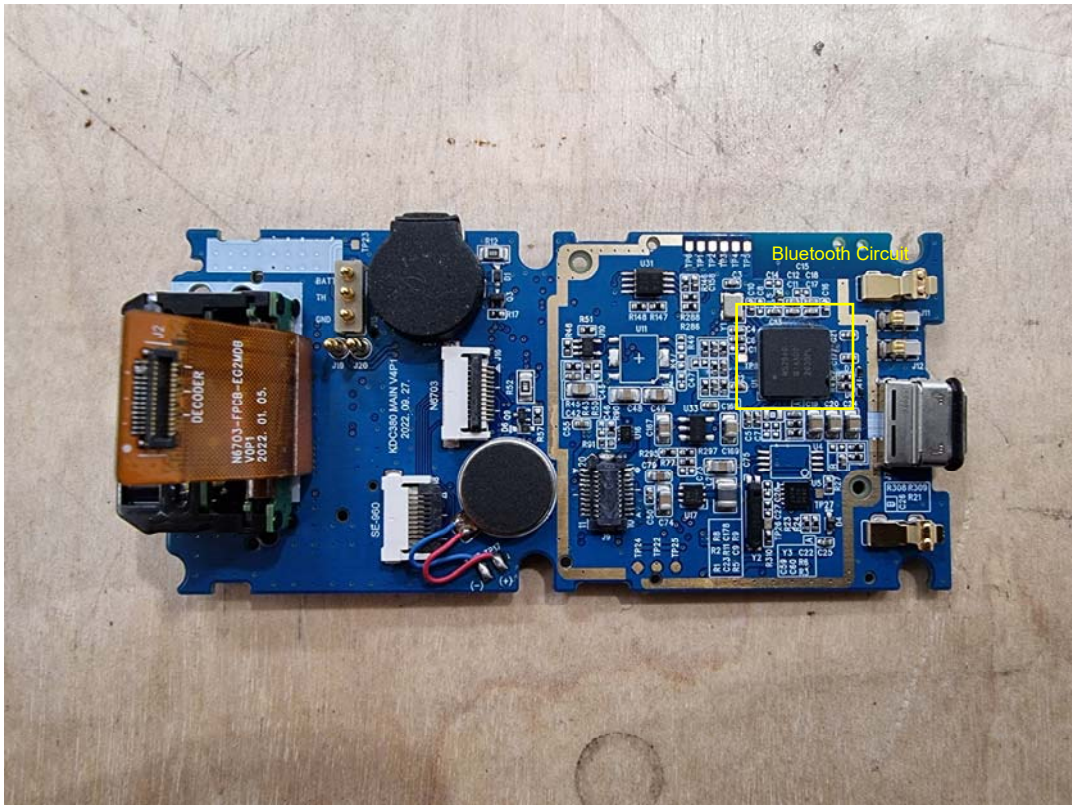
Photographs of EUT



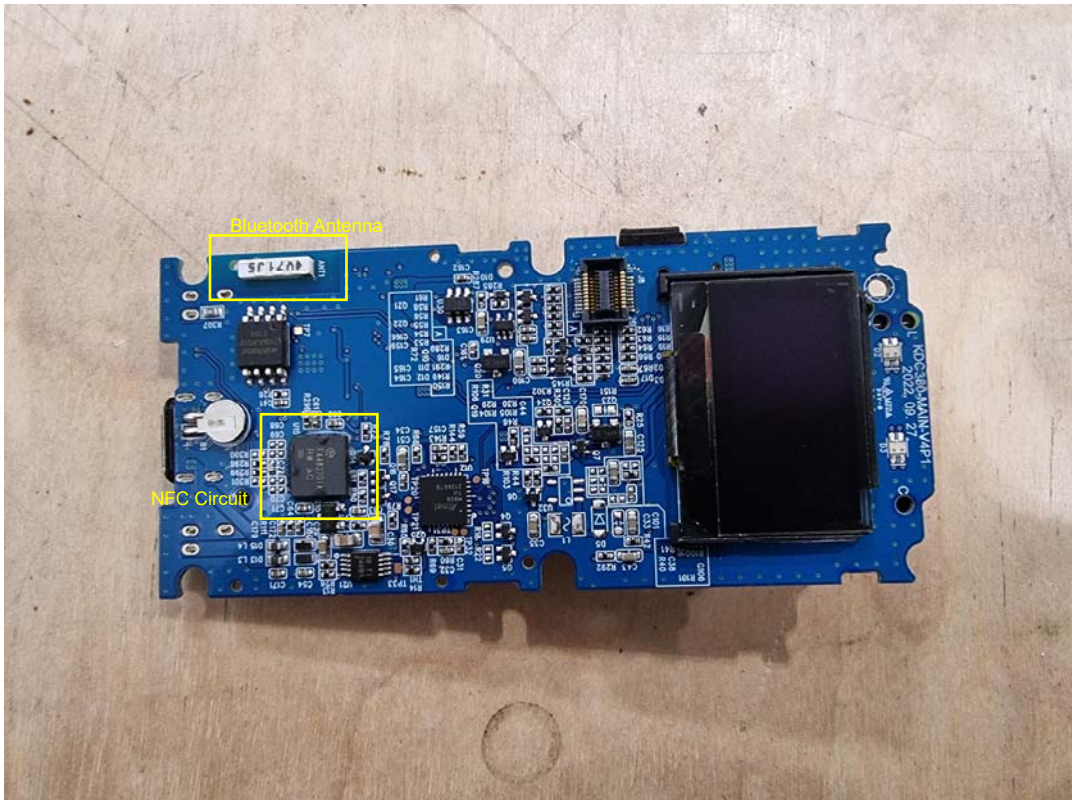
Cover opened - Front



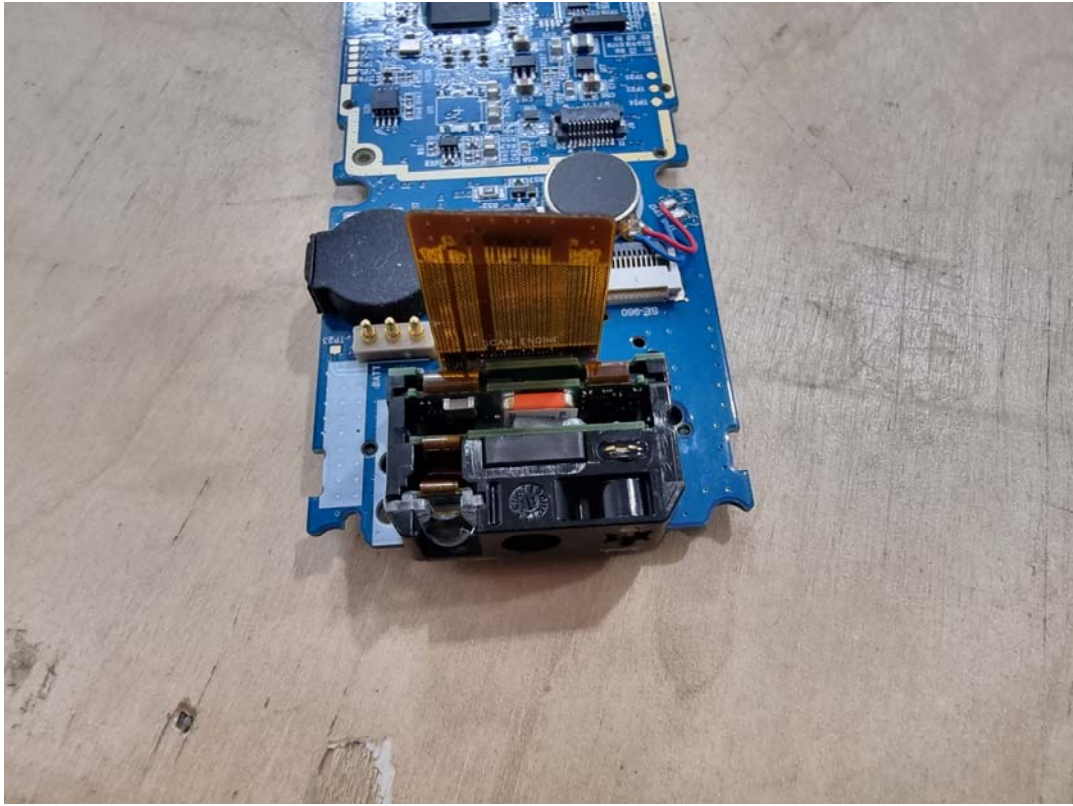
Cover opened - Rear



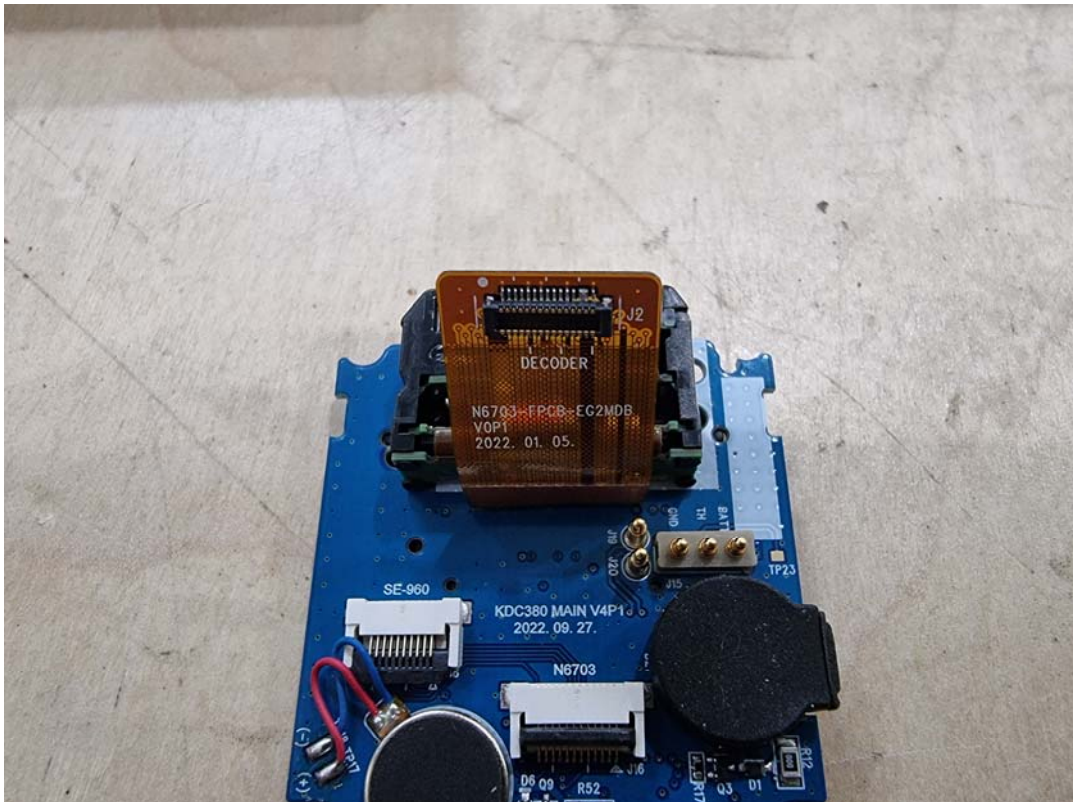
Main board - Front



Main board - Rear



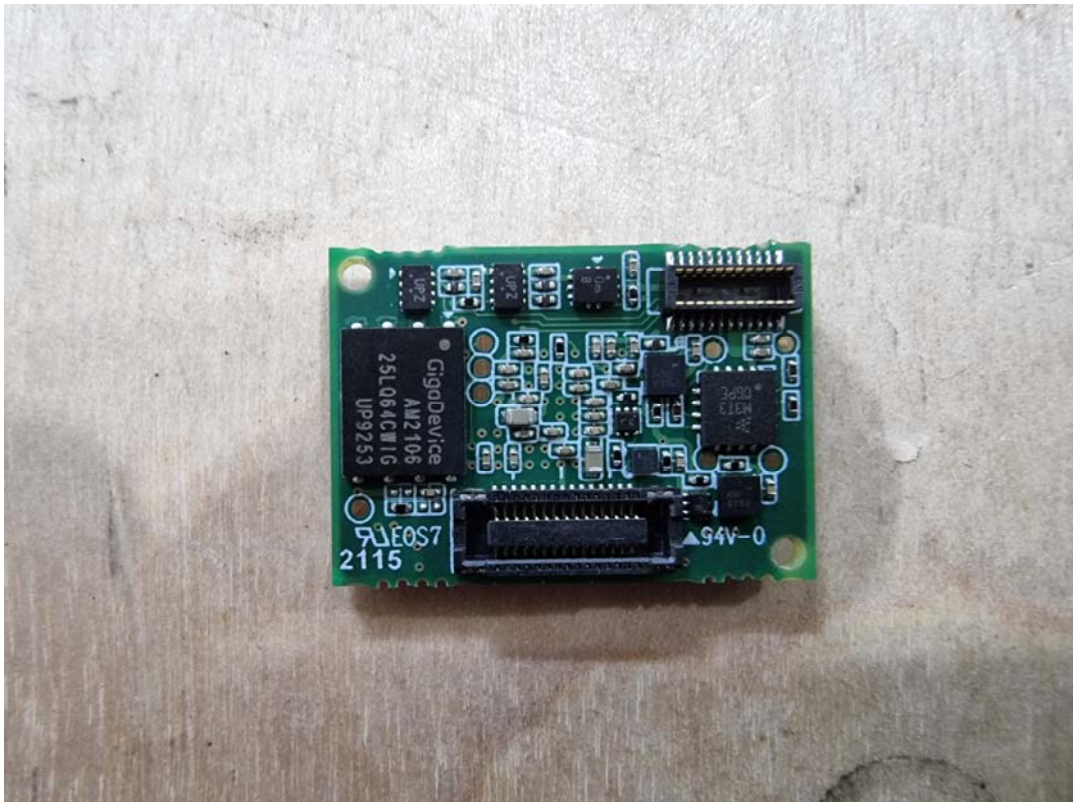
Scanner board - Front



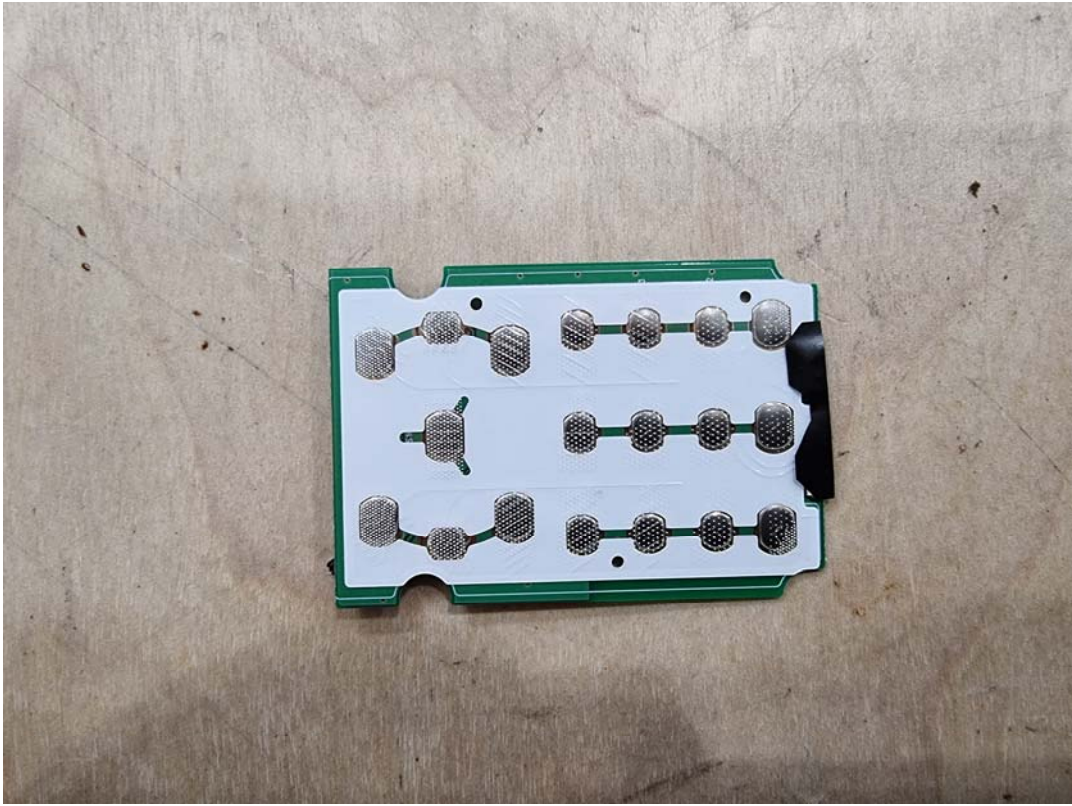
Scanner board - Rear



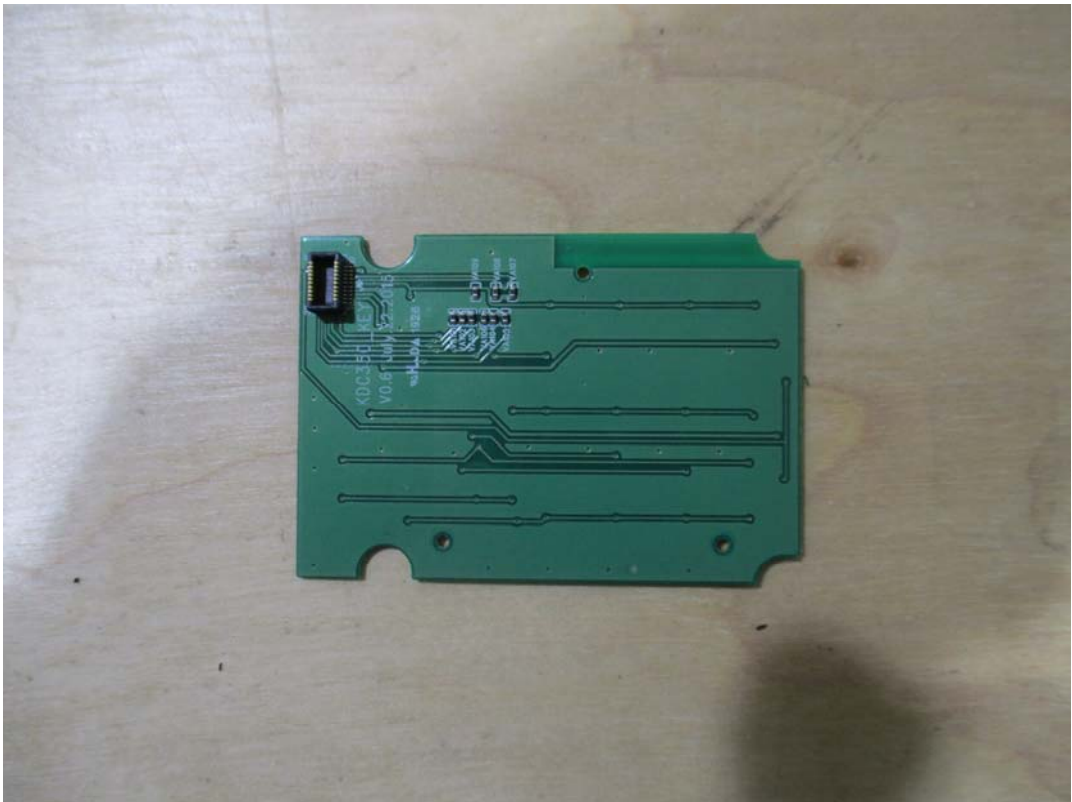
Scanner sub board - Front



Scanner sub board - Rear



Key board - Front



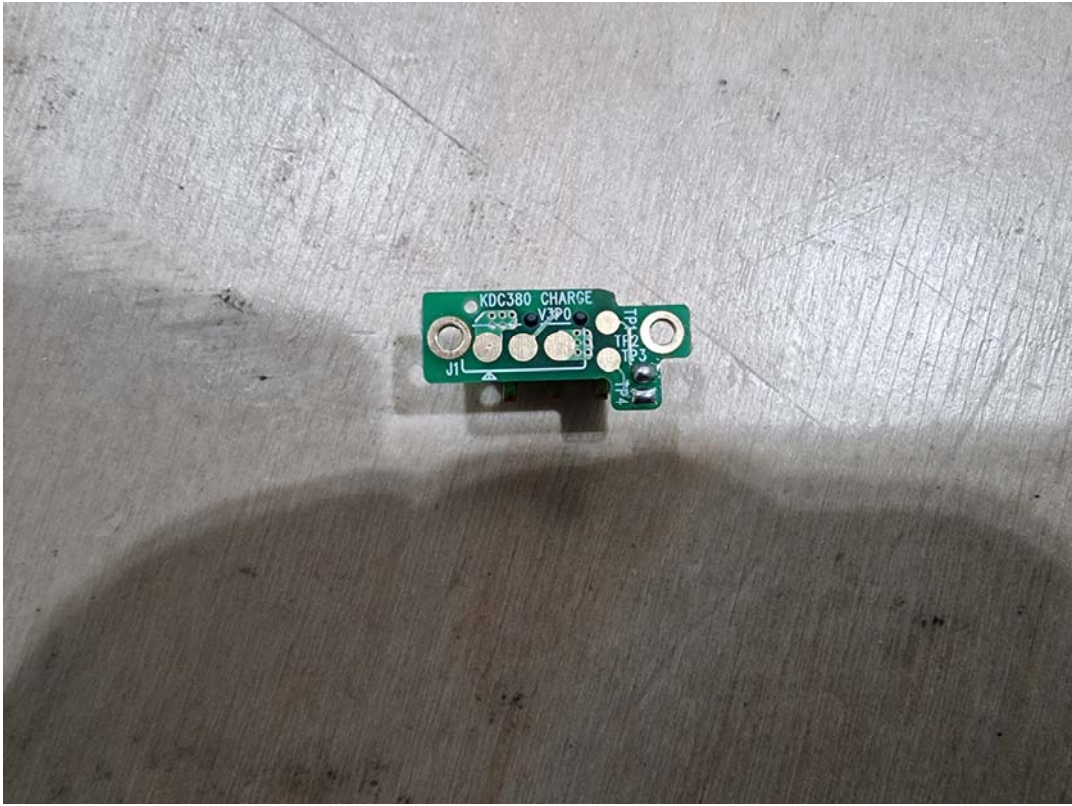
Key board - Rear



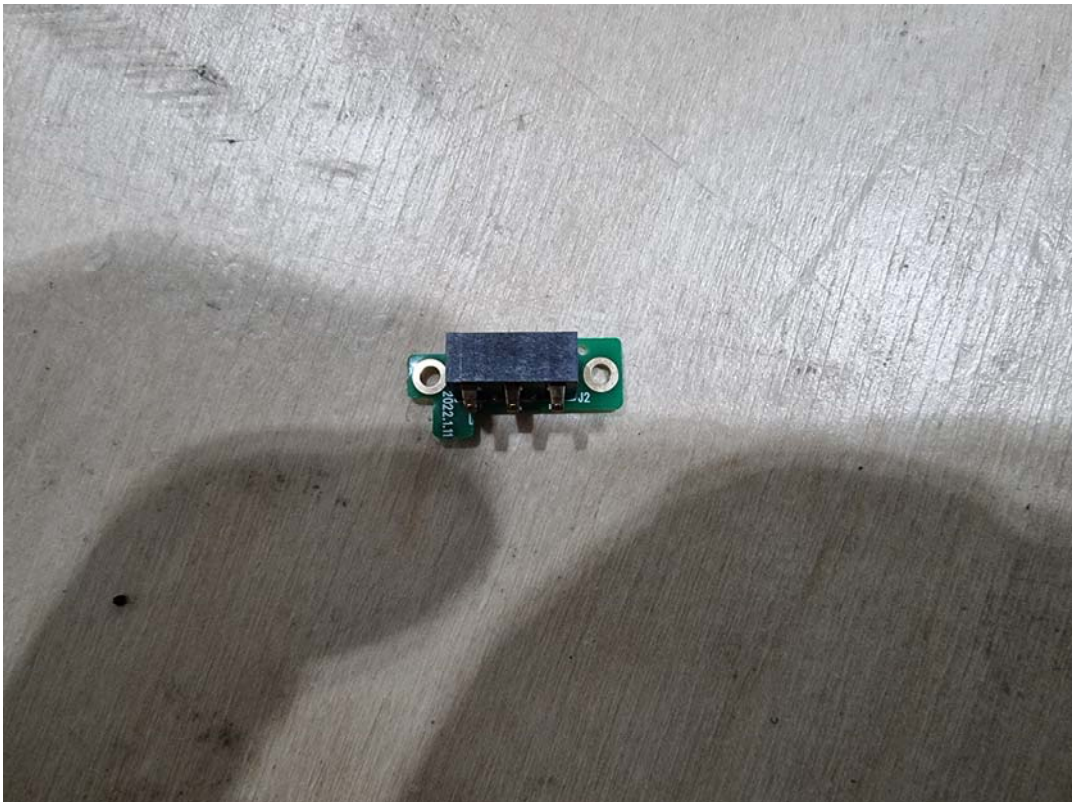
Battery - Front



Battery - Rear



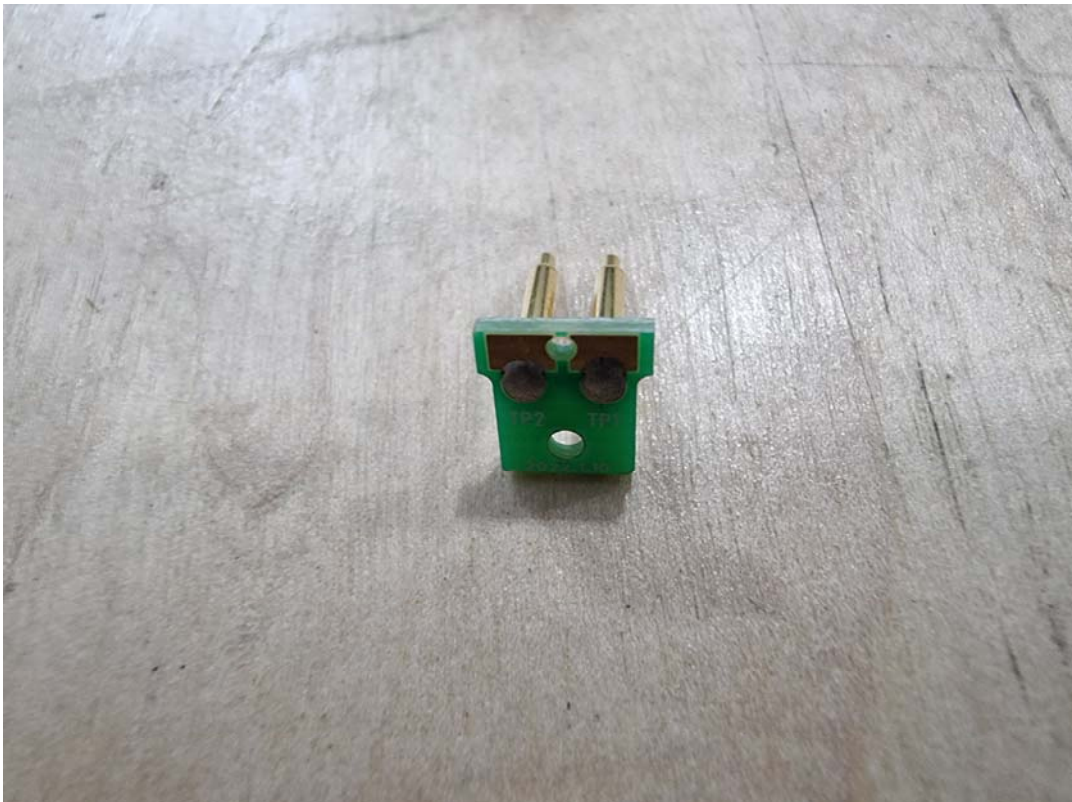
Charge board - Front



Charge board - Rear



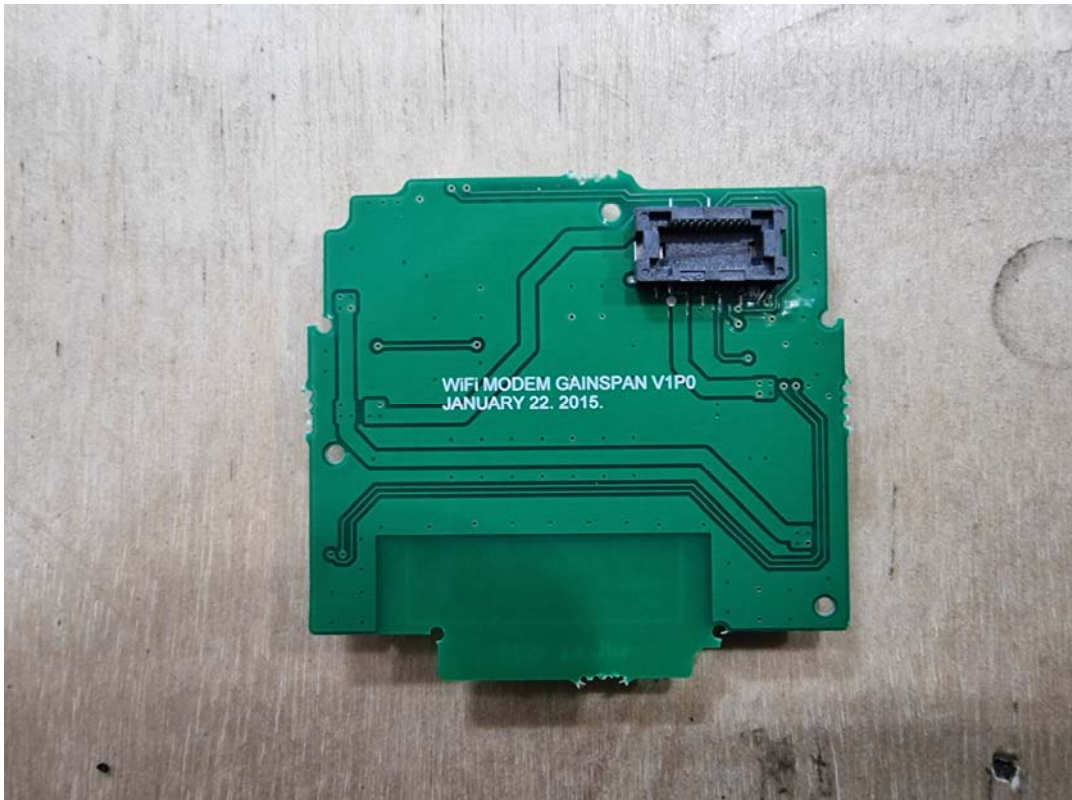
NFC connect board - Front



NFC connect board - Rear



WiFi board - Front



WiFi board - Rear



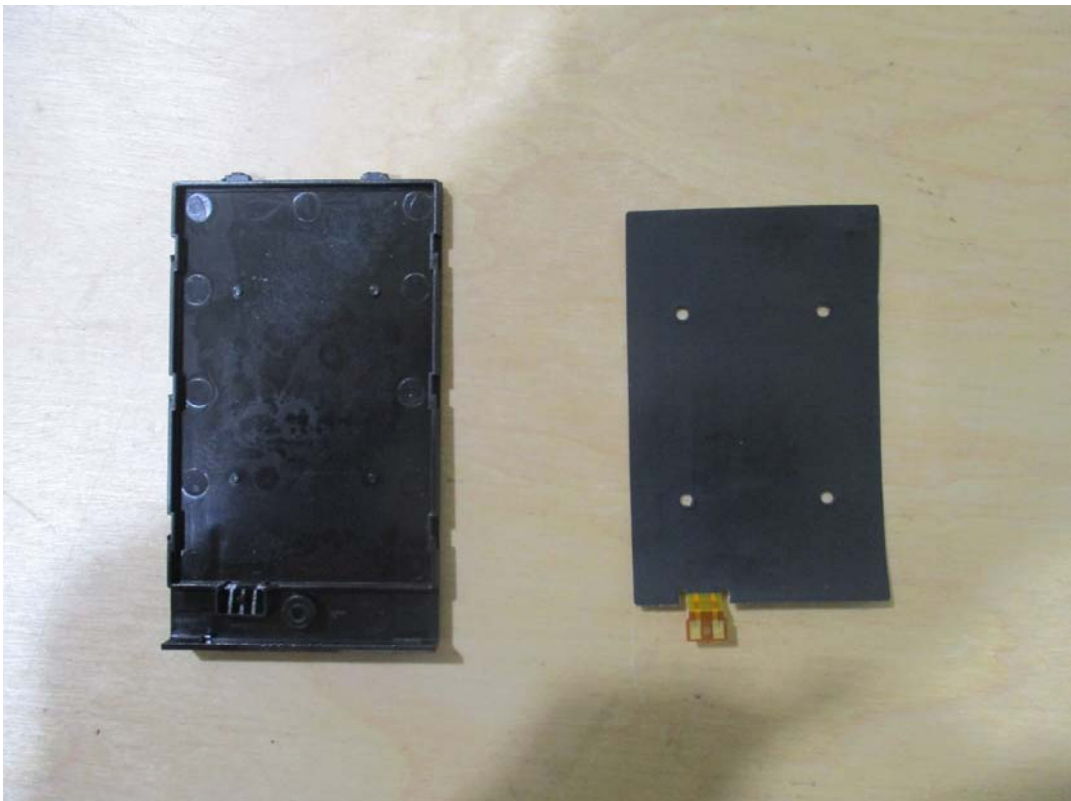
WiFi module – Front (removed cover)



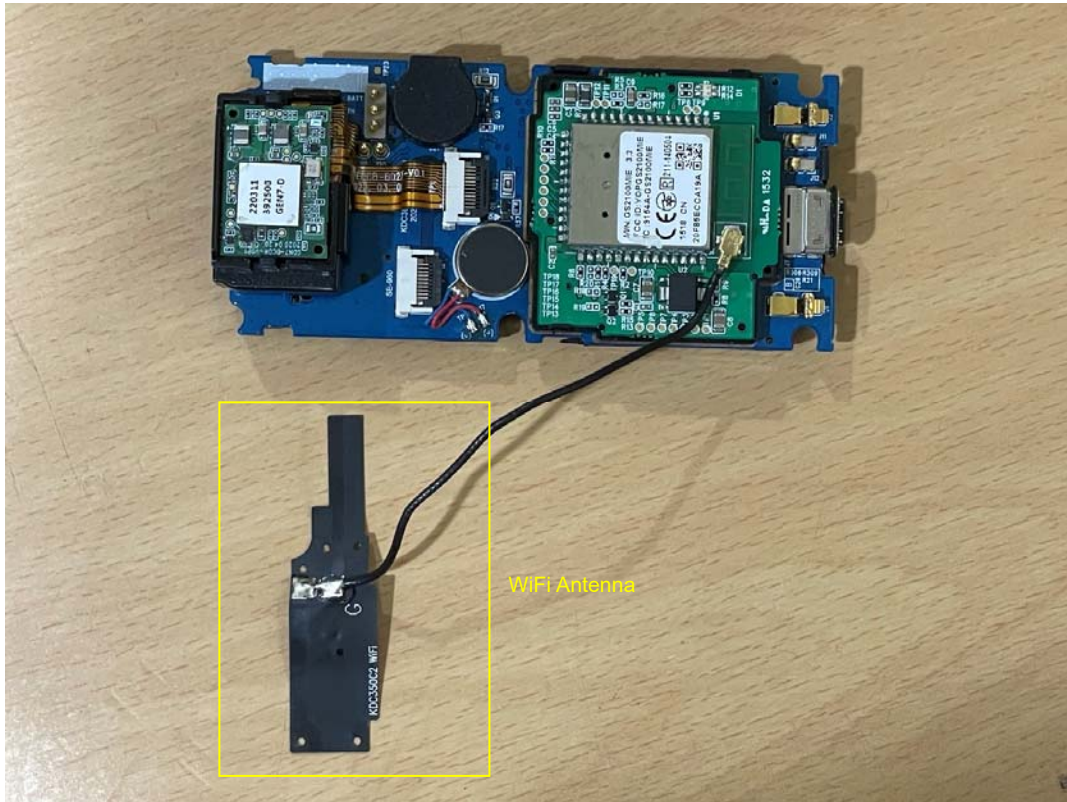
WiFi module – Rear



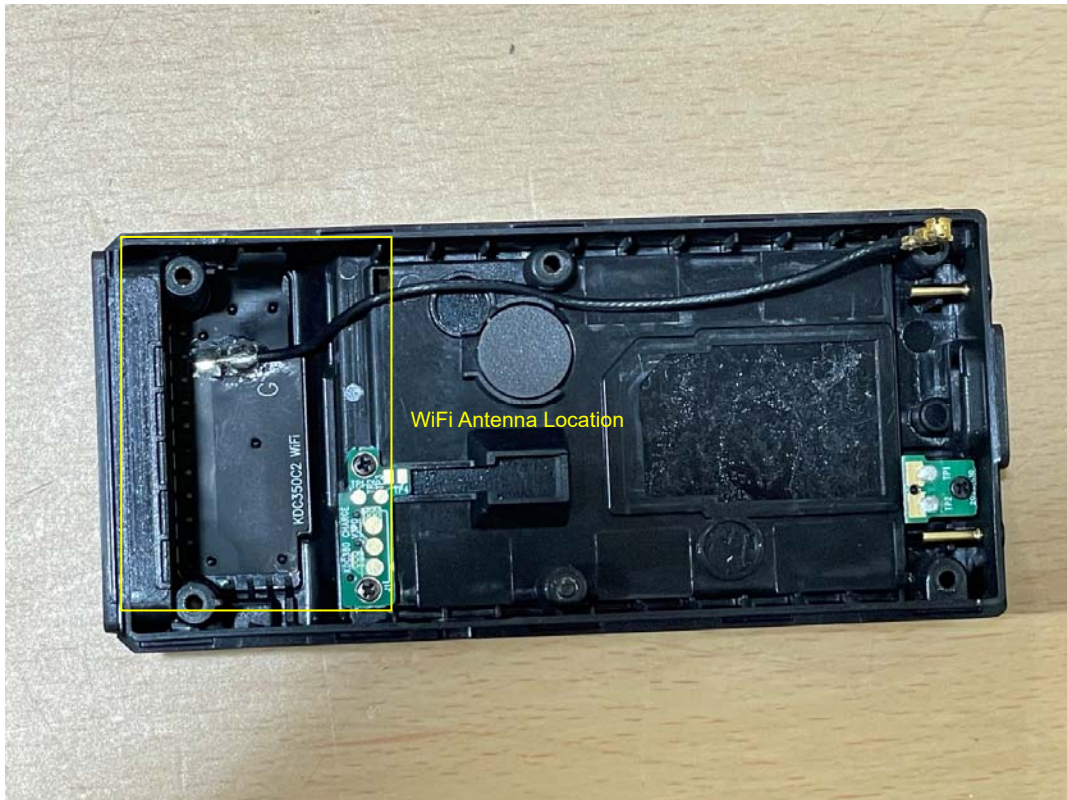
NFC Antenna - Front



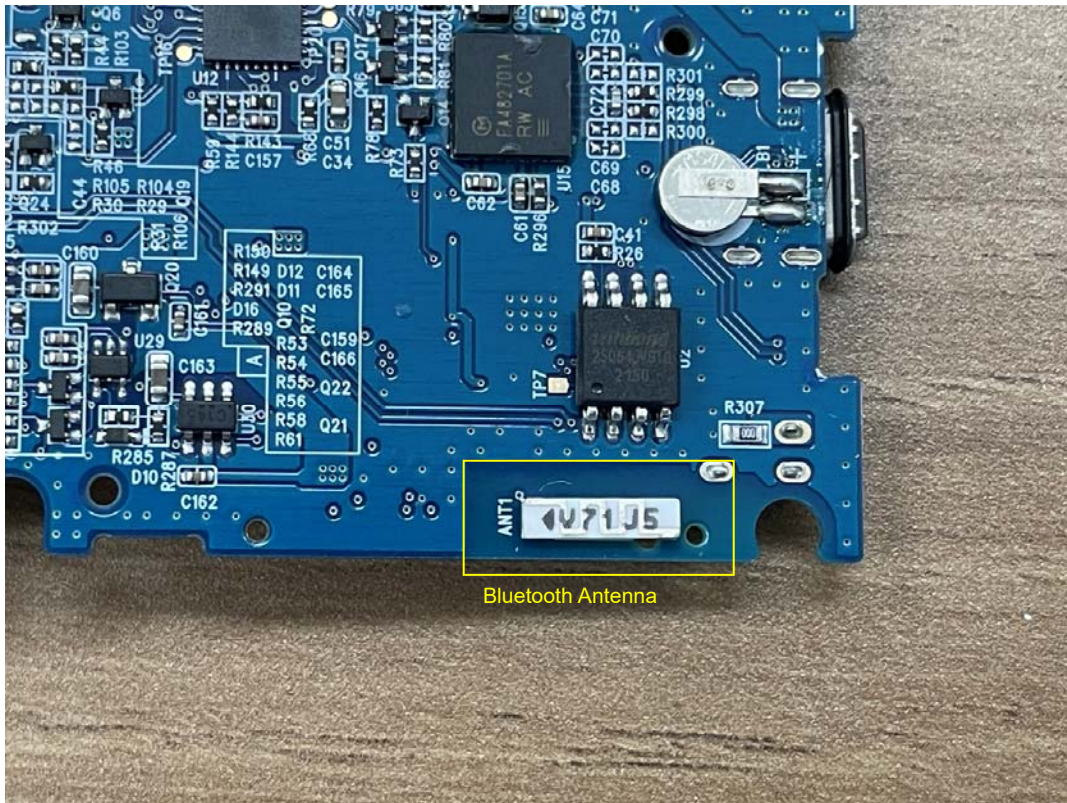
NFC Antenna - Rear



WiFi Antenna



WiFi Antenna



Bluetooth Antenna