

FCC Class II Permissive Change Test Report

On Model Name: Microwave Oven

Model Numbers: MM720CYY-PM

Brand Name: 

FCC ID: VG8XM720CYY-PM

Prepared for Guangdong Midea Microwave and Electrical
Appliances Manufacturing Co.,Ltd

According to

FCC Part 18(2009)

Industrial, Scientific and Medical Equipment

FCC/OST MP-5(1986)

FCC methods of measurements of radio noise emission from industrial, scientific and
medical equipment

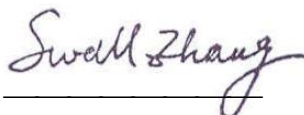
Test Report#: GUA-1103-10583-FCC ID

Prepared by: May Wang

Reviewed by: Jawen Yin

QC Manager: Swall Zhang

Test Report Released by:


Swall Zhang

March 28, 2011

Date

List Attached Files

<i>Exhibit Type</i>	<i>File Description</i>	<i>File Name</i>
<i>Test Report</i>	<i>Test Report</i>	<i>VG8XM720CYY-PM_Test report_rev 03.pdf</i>
<i>Operation Description</i>	<i>Technical Description</i>	<i>VG8XM720CYY-PM_operation description_rev02.pdf</i>
<i>External Photos</i>	<i>External Photos</i>	<i>VG8XM720CYY-PM_External Photos</i>
<i>Internal Photos</i>	<i>Internal Photos</i>	<i>VG8XM720CYY-PM_Internal Photos</i>
<i>Block Diagram</i>	<i>Block Diagram</i>	<i>VG8XM720CYY-PM_Block Diagram.pdf</i>
<i>Schematics</i>	<i>Circuit Diagram</i>	<i>VG8XM720CYY-PM_Schematics.pdf</i>
<i>ID Label/Location</i>	<i>Label and Location</i>	<i>VG8XM720CYY-PM_Label & Location.pdf</i>
<i>User Manual</i>	<i>User Manual</i>	<i>VG8XM720CYY-PM_User Manual.pdf</i>
<i>Test setup photos</i>	<i>Test setup photos</i>	<i>VG8XM720CYY-PM_Test Setup Photos</i>

Test Location

Tests performed in a Certified ANSI Semi-Anechoic Chamber and Shielded Room.

Test Site Location: GD WITOL VACUUM ELECTRONIC EMC TEST LABORATORY.

Beijiao, ShunDe, Foshan, Guangdong, 528311, China

Tel : +86- 757-26326917

Fax : +86-757-26656995

Test Facility

- *FCC - Registration No.: 910385*

GD WITOL VACUUM ELECTRONIC EMC TEST LABORATORY has been registered and fully described in a report filed with the (FCC) Federal Communications Commission. The acceptance letter from the FCC was maintained in our files.

Table of Contents

<i>GOVERNMENT DISCLAIMER NOTICE</i>	1
<i>REPRODUCTION CLAUSE</i>	1
<i>OPINIONS AND INTERPRETATIONS</i>	1
<i>STATEMENT OF MEASUREMENT UNCERTAINTY</i>	1
<i>ADMINISTRATIVE DATA</i>	2
<i>EUT DESCRIPTION</i>	3
<i>TYPE OF DERIVED</i>	4
<i>TEST SUMMARY</i>	5
<i>LOAD FOR MICROWAVE OVEN</i>	6
<i>EQUIPMENT MODIFICATION</i>	6
<i>EUT SAMPLE PHOTOS FOR MODEL MM720CYY-PM</i>	7
<i>TEST SYSTEM DETAILS</i>	11
<i>CONFIGURATION OF TESTED SYSTEM</i>	12
<i>ATTACHMENT 1 - RADIATION HAZARD TEST</i>	13
<i>ATTACHMENT 2 - INPUT POWER MEASUREMENT</i>	15
<i>ATTACHMENT 3 - RF OUTPUT POWER MEASUREMENT</i>	18
<i>ATTACHMENT 4 - OPERATING FREQUENCY MEASUREMENT</i>	21
<i>ATTACHMENT 5 - CONDUCTED EMISSION TEST RESULTS</i>	24
<i>ATTACHMENT 6 - RADIATED EMISSION TEST RESULTS</i>	28

Government Disclaimer Notice

When government drawing, specification, or other data are used for any purpose other than in connection with a definitely related government procurement operation, the United States Government thereby incurs no responsibility nor any obligation whatsoever; and the fact that the Government may have formulated, furnished, or in any way supplied the said drawing, specifications, or other data, is not to be regarded by implication or otherwise in any manner licensing the holder or any other person or corporation, or conveying any rights or permission to manufacture, use, or sell patented invention that may in any way be related thereto. This report must not be used to claim product endorsement by NVLAP or any agency of the U.S. Government.

Reproduction Clause

Any reproduction of this document must be done in full. No single part of this document may be reproduced without permission from EMC Compliance Management Group.

Opinions and Interpretations

This test report relates to the above mentioned equipment under test (EUT). Without the permission of EMC Compliance Management Group., this test report is not permitted to be duplicated in extracts. This test report does not entitle to carry any test mark on this or similar products. The manufacturer has sole responsibility of continued compliance of the device.

Statement of Measurement Uncertainty

The data and results referenced in the document are true and accurate. The reader is cautioned that there may be errors within the calibration limits of the equipment and facilities that can account for a nominal measurement error. Furthermore, component and process variability of devices similar to that tested may result in additional deviation.

Administrative Data

Test Sample : *Microwave Oven*

Model Numbers : *MM720CYY-PM*

Model Tested : *MM720CZE-PM*

Brand Name : 

Receipt Date : *March 10, 2011*

Date Tested : *March 12, 2011*

Applicant : *Guangdong Midea Microwave and Electrical Appliances Manufacturing Co.,Ltd.*

Address : *No.6, Yong An Road, Beijiao, Shunde, Foshan. Guangdong, 528311, China.*

Manufacturer : *Guangdong Midea Microwave and Electrical Appliances Manufacturing Co.,Ltd.*

Address : *No.6, Yong An Road, Beijiao, Shunde, Foshan. Guangdong, 528311, China.*

Factory : *Guangdong Midea Microwave and Electrical Appliances Manufacturing Co.,Ltd.*

Address : *No.6, Yong An Road, Beijiao, Shunde, Foshan. Guangdong, 528311, China.*

EUT Description

Guangdong Midea Microwave and Electrical Appliances Manufacturing Co.,Ltd. model tested MM720CZE-PM (referred to the EUT in this report) is a Microwave Oven.

<i>Power Supply</i>	<i>120V AC, 60Hz, AC Only</i>
<i>Rated Input Power (Microwave)</i>	<i>1050W</i>
<i>Rated Output Power (Microwave)</i>	<i>700 W</i>
<i>Frequency</i>	<i>2450 MHz (Class B/Group 2)</i>
<i>Magnetron Model</i>	<i>2M217J</i>
<i>Magnetron Manufacturer</i>	<i>VITOL</i>

For more informations please refer to user's manual of EUT.

Type of Derived

MM720CYY-PM (Y=0-9 or A-Z) model designations:

M:Representative mechanical;

M: microwave functions;

720: " 7 " indicate the microwave output power is 700W; 20 indicate cavity capacity is 20 liters

C: Representative platform;

YY= 0-9 or A-Z, indicate different appearance.

Model MM720CZE-PM was selected for the final test.

Note :

This is a FCC Class II Permissive Change application of the device. The Original application is granted on 12/28/2009. All changes between them as following:

- 1. Add a model number*
- 2. Update Transformer*
- 3. Update control panel*

All tests shall be performed again for these changes.

Test Summary

The Electromagnetic Compatibility requirements on model tested MM720CZE-PM for this test is stated below. All results listed in this report relate exclusively to this above-mentioned model as the Equipment Under Test. This report confers no approval or endorsement upon any other component, host or subsystem used in the test set-up.

Emission Tests				
Specifications	Description	Test Results	Test Point	Remark
<i>FCC Part 18:2009 FCC/OST MP-5:1986 ANSI C63.4-2009</i>	<i>Radiation Hazard Measurement</i>	<i>Passed</i>	<i>Enclosure</i>	<i>Attachment 1</i>
<i>FCC Part 18:2009 FCC/OST MP-5:1986 ANSI C63.4-2009</i>	<i>Input Power Measurement</i>	<i>Passed</i>	<i>AC Input Port</i>	<i>Attachment 2</i>
<i>FCC Part 18:2009 FCC/OST MP-5:1986 ANSI C63.4-2009</i>	<i>RF Output power Measurement</i>	<i>Passed</i>	<i>EUT</i>	<i>Attachment 3</i>
<i>FCC Part 18:2009 FCC/OST MP-5:1986 ANSI C63.4-2009</i>	<i>Operating Frequency Measurement</i>	<i>Passed</i>	<i>EUT</i>	<i>Attachment 4</i>
<i>FCC Part 18:2009 FCC/OST MP-5:1986 ANSI C63.4-2009</i>	<i>Conducted Emission</i>	<i>Passed</i>	<i>AC Input Port</i>	<i>Attachment 5</i>
<i>FCC Part 18:2009 FCC/OST MP-5:1986 ANSI C63.4-2009</i>	<i>Radiated Emission</i>	<i>Passed</i>	<i>Enclosure</i>	<i>Attachment 6</i>

Load for Microwave Oven

For all measurements the energy developed by the oven was absorbed by a dummy load consisting of a quantity of tap water in a beaker. If the oven was provided with a shelf or other utensil support, this support was in its initial normal position. For ovens rated at 1000watts or less power output, the beaker contained quantities of water as listed in the following subparagraphs. For ovens rated at more than 1000watts output, each quantity was increased by 50% for each 500watts or fraction thereof in excess of 1000 watts. Additional beakers were used if necessary.

--Load for power output measurement: 1000 milliliters of water in the beaker located in the center of the oven.

--Load for frequency measurement: 1000 milliliters of water in the beaker located in the center of the oven.

--Load for measurement of radiation on second and third harmonic: Two loads, one of 700 and the other of 300 milliliters, of water are used. Each load is tested both with the beaker located in the center of the oven and with it in the right front corner.

--Load for all other measurements: 700 milliliters of water, with the beaker located in the center of the oven.

Equipment Modification

Any modifications installed previous to testing by Midea Microwave and Electrical Appliances Manufacturing Co.,Ltd will be incorporated in each production model sold or leased in United States.

There were no modifications installed by EMC Compliance Management Group., test personnel.

EUT Sample Photos for Model MM720CYY-PM



EUT Front View



EUT Rear View

Report #: GUA-1103-10583-FCC ID

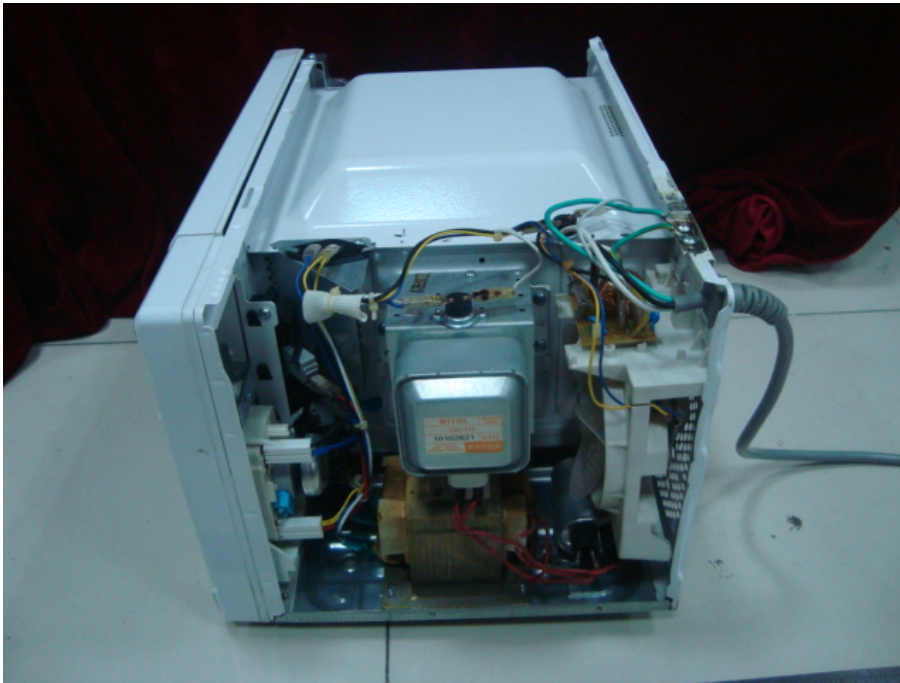
Prepared for Guangdong Midea Microwave and Electrical Appliances Manufacturing Co.,Ltd

Prepared by EMC Compliance Management Group.

Page 7 of 31



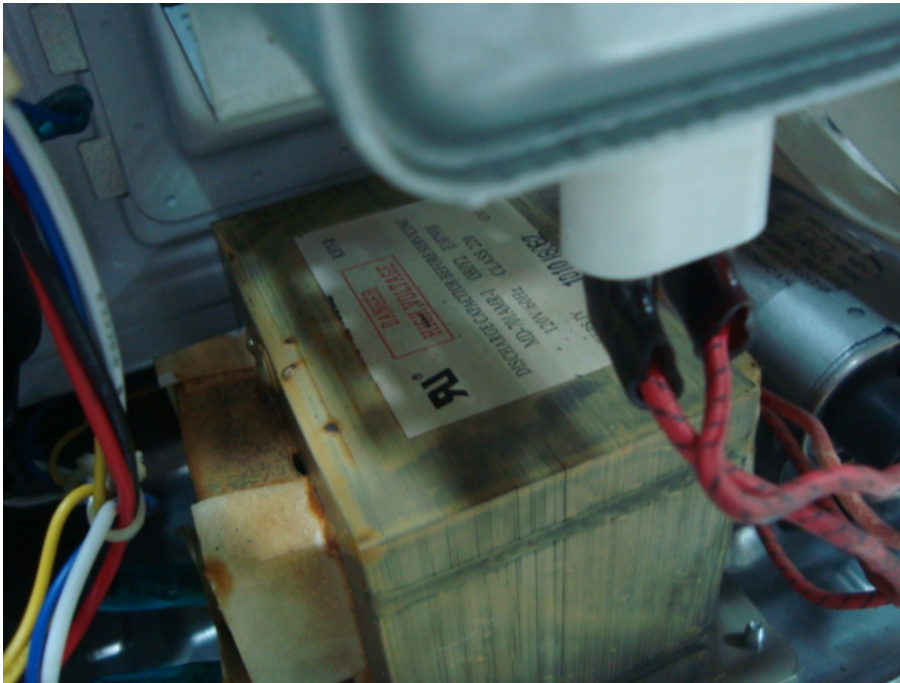
Door Opened View



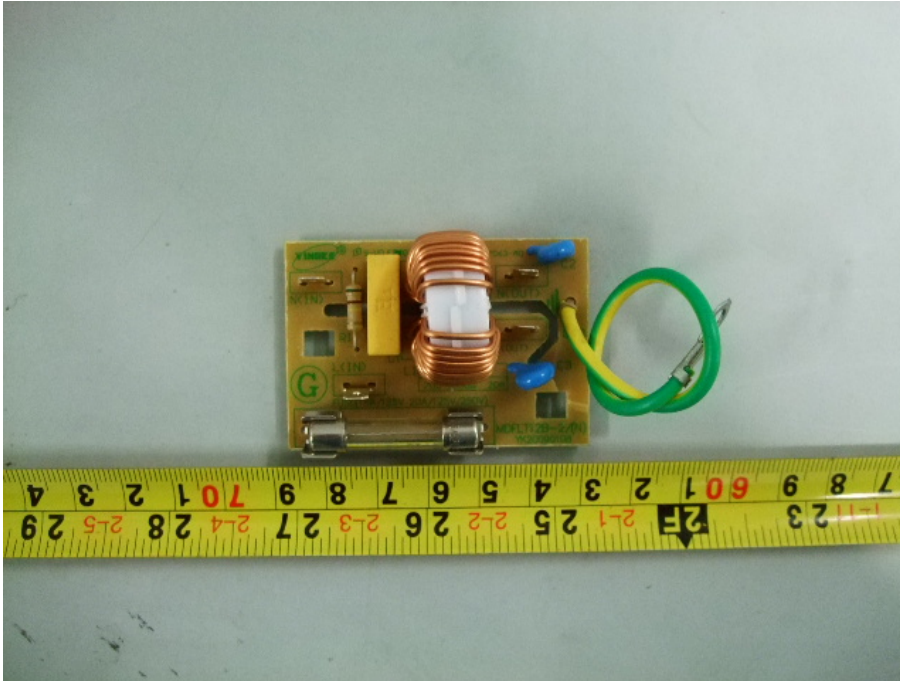
EUT Uncovered View



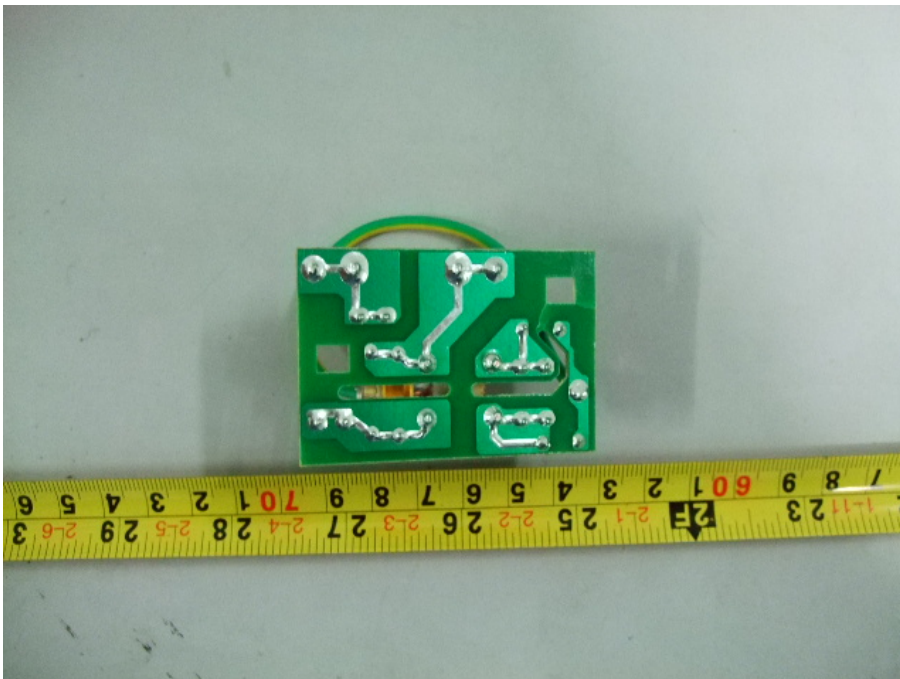
Magnetron View



Transformer View



Filter Board -Front View

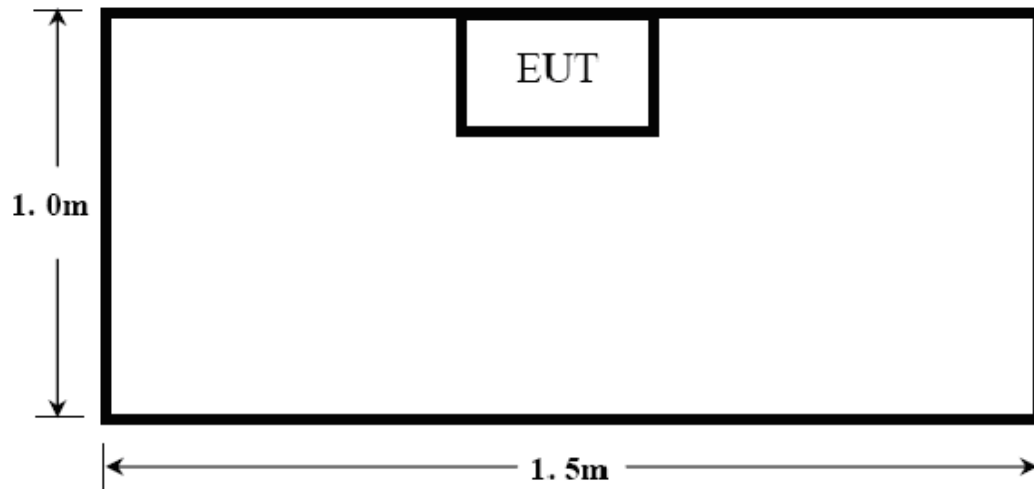


Filter Board -Back View

Test System Details

<i>EUT</i>					
Model Numbers:	<i>MM720CYY-PM</i>				
Model Tested:	<i>MM720CZE-PM</i>				
Description:	<i>Microwave Oven</i>				
Manufacturer:	<i>Guangdong Midea Microwave and Electrical Appliances Manufacturing Co.,Ltd.</i>				
<i>Support Equipment</i>					
<i>N/A</i>					
<i>Cable Description</i>					
<i>Description</i>	<i>From</i>	<i>To</i>	<i>Length (Meters)</i>	<i>Shielded (Y/N)</i>	<i>Ferrite (Y/N)</i>
<i>Power Cable</i>	<i>EUT</i>	<i>Plug</i>	<i>1.20</i>	<i>N</i>	<i>N</i>

Configuration of Tested System



ATTACHMENT 1 - RADIATION HAZARD TEST

CLIENT:	Guangdong Midea Microwave and Electrical Appliances Manufacturing Co.,Ltd.	TEST STANDERD:	FCC Part 18
MODEL NUMBERS:	MM720CYY-PM	PRODUCT:	Microwave Oven
MODEL TESTED:	MM720CZE-PM	EUT DESIGNATION:	Home or Office
TEMPERATURE:	22°C	HUMIDITY:	60%RH
ATM PRESSURE:	101.1kPa	GROUNDING:	Through AC Power Cord
TESTED BY:	May Wang	DATE OF TEST:	March 12, 2011
TEST REFERENCE:	ANSI C63.4-2009, FCC/OST MP-5:1986		
TEST PROCEDURE:	The EUT was set up according to the FCC MP-5 and FCC Part 18 for Radiation Hazard Measurement. The measurement was using a microwave leakage meter to measure the Radiation leakage in the as-received condition with the oven door closed. A 1000ml water load in a beaker was located in the center of the oven and the Microwave Oven was set to maximum power. While the oven operating, the microwave meter will check the leakage and then record the maximum leakage.		
TESTED RANGE:	N/A		
TEST VOLTAGE:	120VAC / 60Hz		
RESULTS:	<p>There was no microwave leakage exceeding a power level of 0.01 mW/cm² observed at any point 5cm or more from the external surface of the oven.</p> <p>A maximum of 1.0 mW/cm² is allowed in accordance with the applicable FCC standards. Hence, microwave leakage in the as-received condition with the oven door closed was below the maximum allowed.</p> <p>The test results relate only to the equipment under test provided by client.</p>		
CHANGES OR MODIFICATIONS:	There were no modifications installed by EMC Compliance Management Group., (China) test personnel.		
M. UNCERTAINTY:	0.0001 mW/cm ²		

ATTACHMENT 2 – INPUT POWER MEASUREMENT

CLIENT:	Guangdong Midea Microwave and Electrical Appliances Manufacturing Co.,Ltd.	TEST STANDERD:	FCC Part 18
MODEL NUMBERS:	MM720CYY-PM	PRODUCT:	Microwave Oven
MODEL TESTED:	MM720CZE-PM	EUT DESIGNATION:	Home or Office
TEMPERATURE:	22°C	HUMIDITY:	60%RH
ATM PRESSURE:	101.1kPa	GROUNDING:	Through AC Power Cord
TESTED BY:	May Wang	DATE OF TEST:	March 12, 2011
TEST REFERENCE:	ANSI C63.4-2009, FCC/OST MP-5:1986		
TEST PROCEDURE:	The EUT was set up according to the FCC MP-5 and FCC Part 18 for Input power Measurement. The input power and current was measured using a power analyzer. A 1000ml water load in a beaker was located in the center of the oven and the Microwave Oven was set to maximum power. While the oven is operating, use a voltmeter and an ammeter to test the AC input voltage and current.		
TESTED RANGE:	N/A		
TEST VOLTAGE:	120VAC / 60Hz		
RESULTS :	Based on the measured input power, the EUT was found to be operating within the intended specifications. The test results relate only to the equipment under test provided by client.		
CHANGES OR MODIFICATIONS:	There were no modifications installed by EMC Compliance Management Group., (China) test personnel.		
M. UNCERTAINTY :	± 5W		

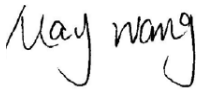
Test Data:


<i>Input Voltage (Vac/Hz)</i>	<i>Input Current (amps)</i>	<i>Measured Input Power (watts)</i>	<i>Rated Input Power (watts)</i>
120.0	8.15	978	1050

Test Equipments List :

<i>Test Equipment</i>	<i>Manufacturer</i>	<i>Model</i>	<i>Serial No.</i>	<i>Last Cal.</i>	<i>Cal. Due</i>
Power Meter	Ainuo	AN8726C	058704200	08/13/2010	08/12/2011

Note: All testing were performed using internationally recognized standards. All test instruments were calibrated and traceable to the National Institute of Standards and Technology (NIST).

SIGNED BY: 
ENGINEER

REVIEWED BY: 
SENIOR ENGINEER

Input Power Test Set-Up :



Report #: GUA-1103-10583-FCC ID

Prepared for Guangdong Midea Microwave and Electrical Appliances Manufacturing Co.,Ltd

Prepared by EMC Compliance Management Group.

Page 17 of 31

ATTACHMENT 3 – RF OUTPUT POWER MEASUREMENT

CLIENT:	Guangdong Midea Microwave and Electrical Appliances Manufacturing Co.,Ltd.	TEST STANDERD:	FCC Part 18
MODEL NUMBERS:	MM720CYY-PM	PRODUCT:	Microwave Oven
MODEL TESTED:	MM720CZE-PM	EUT DESIGNATION:	Home or Office
TEMPERATURE:	22°C	HUMIDITY:	60%RH
ATM PRESSURE:	101.1kPa	GROUNDING:	Through AC Power Cord
TESTED BY:	May Wang	DATE OF TEST:	March 12, 2011
TEST REFERENCE:	ANSI C63.4-2009, FCC/OST MP-5:1986		
TEST PROCEDURE:	<p>The EUT was set up according to the FCC MP-5 and FCC Part 18C for RF output power Measurement. The Caloric Method was used to determine maximum RF output power. The initial temperature of the water load was measured. A 1000ml water load in a beaker was located in the center of the oven. The oven was operated at maximum output power for 120 seconds, the temperature of the water was re-measured.</p> <p>RF Output Power</p> $= (4.2\text{joules/calorie})(\text{volume in milliliters})(\text{temperature rise}) / (\text{time in seconds})$ $= 4.2 \text{ joules/calorie} \times 1000 \times (\text{Final Temp} - \text{Initial Temp}) / 120$		
TESTED RANGE:	N/A		
TEST VOLTAGE:	120VAC / 60Hz		
RESULTS:	<p>RF Output Power =525 watts.</p> <p>The test results relate only to the equipment under test provided by client.</p>		
CHANGES OR MODIFICATIONS:	There were no modifications installed by EMC Compliance Management Group., (China) test personnel.		
M. UNCERTAINTY:	± 0.3°C		

Test Data:

<i>Quality of Water (ml)</i>	<i>Starting Temperature (°C)</i>	<i>Final Temperature (°C)</i>	<i>Elapsed Time (Seconds)</i>	<i>RF Output Power (watts)</i>
1000	25.3	40.3	120	525

Test Equipments List :

<i>Test Equipment</i>	<i>Manufacturer</i>	<i>Model</i>	<i>Serial No.</i>	<i>Last Cal.</i>	<i>Cal. Due</i>
<i>Digit Thermometer</i>	<i>Fluke Corporation</i>	<i>Fluke 51 II</i>	<i>87500204</i>	<i>10/26/2010</i>	<i>10/25/2011</i>
<i>Stopwatch</i>	<i>CASIO</i>	<i>HS-3</i>	<i>511Q038</i>	<i>10/22/2011</i>	<i>10/21/2011</i>

Note: All testing were performed using internationally recognized standards. All test instruments were calibrated and traceable to the National Institute of Standards and Technology (NIST).

SIGNED BY: May Wang
ENGINEER

REVIEWED BY: Janeyan
SENIOR ENGINEER

RF Output Power Test Set-Up :



ATTACHMENT 4 - OPERATING FREQUENCY MEASUREMENT

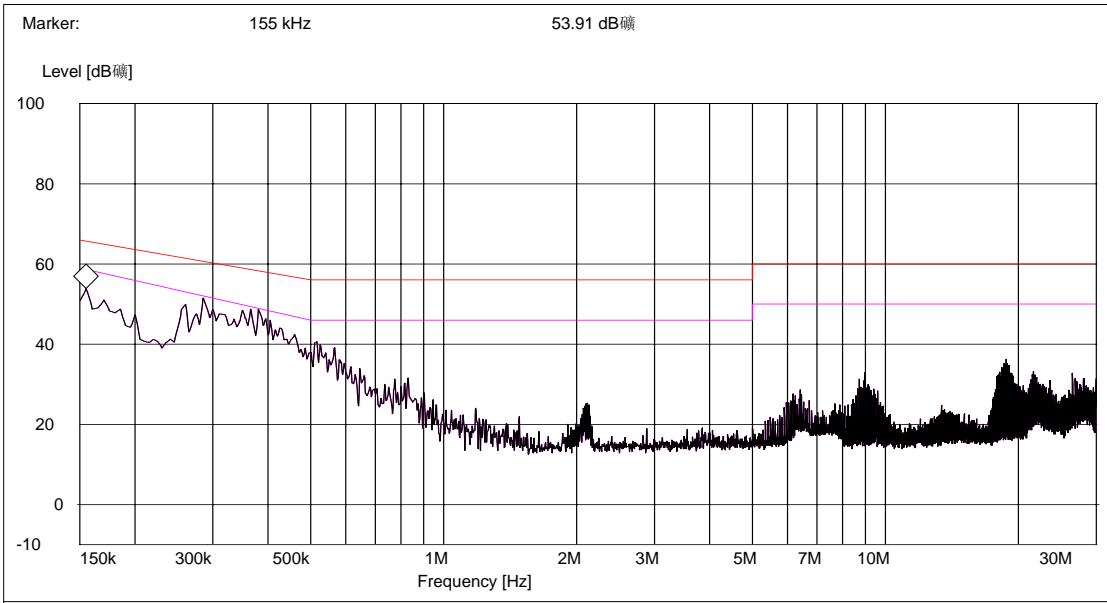
CLIENT:	Guangdong Midea Microwave and Electrical Appliances Manufacturing Co.,Ltd.	TEST STANDERD:	FCC Part 18
MODEL NUMBERS:	MM720CYY-PM	PRODUCT:	Microwave Oven
MODEL TESTED:	MM720CZE-PM	EUT DESIGNATION:	Home or Office
TEMPERATURE:	22°C	HUMIDITY:	60%RH
ATM PRESSURE:	101.1kPa	GROUNDING:	Through AC Power Cord
TESTED BY:	May Wang	DATE OF TEST:	March 12, 2011
TEST REFERENCE:	ANSI C63.4-2009, FCC/OST MP-5:1986		
TEST PROCEDURE:	<p>The EUT was set up according to the FCC MP-5 and FCC Part 18 for Operating Frequency Measurement.</p> <ol style="list-style-type: none"> 1) The variation of frequency with time. The operating frequency was measured using a spectrum analyzer. Starting with the EUT at room temperature, a 1000ml water load in a beaker was located in the center of the oven. Set a spectrum analyzer with antenna at 3 meters distance form the oven and the oven was operated at maximum output power. The fundamental operating frequency was monitored until the water load was reduced to 20 percent of the original load. 2) The variation of frequency with Line Voltage. The operating frequency was measured using a spectrum analyzer. The EUT was operated/warmed by at least 10 minutes of use with a 1000ml water load at room temperature at the beginning of the test. Then the operating frequency was monitored as the input voltage was varied between 80 and 125 percent of the nominal rating. 		
TESTED RANGE:	2450 ± 50MHz		
TEST VOLTAGE:	120VAC / 60Hz		
RESULTS:	Please refer to following pages for details of the variation in operating frequency with time & line voltage measurement. The test results relate only to the equipment under test provided by client.		
CHANGES OR MODIFICATIONS:	There were no modifications installed by EMC Compliance Management Group., (China) test personnel.		
M. UNCERTAINTY:	Freq. ±10kHz		

Operating Frequency Test Set-up:

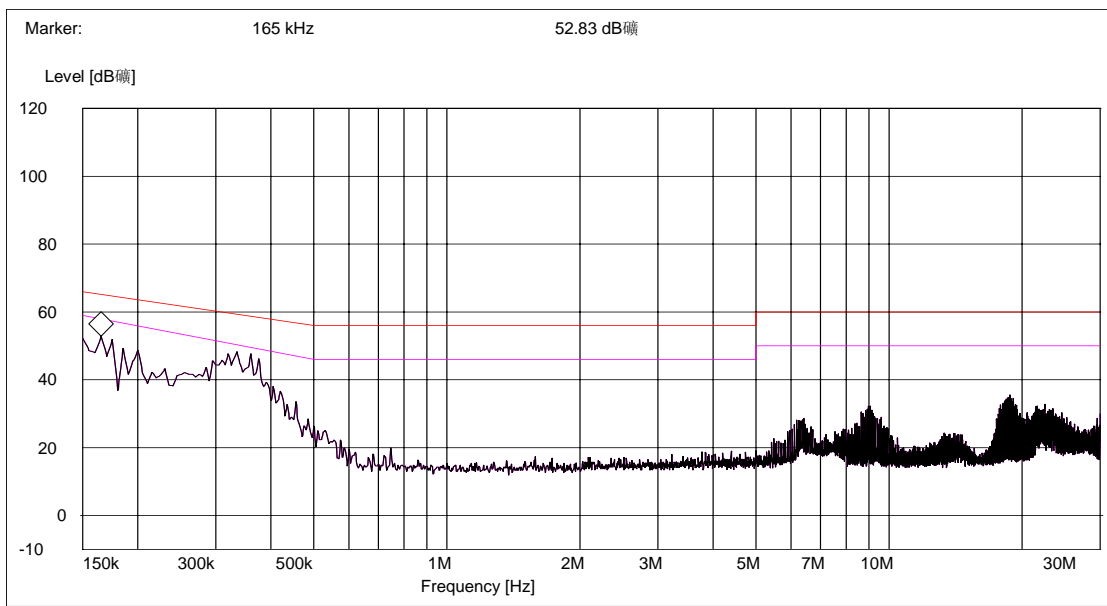


ATTACHMENT 5 – CONDUCTED EMISSION TEST RESULTS

CLIENT:	Guangdong Midea Microwave and Electrical Appliances Manufacturing Co.,Ltd.	TEST STANDERD:	FCC Part 18
MODEL NUMBERS:	MM720CYY-PM	PRODUCT:	Microwave Oven
MODEL TESTED:	MM720CZE-PM	EUT DESIGNATION:	Home or Office
TEMPERATURE:	22°C	HUMIDITY:	60%RH
ATM PRESSURE:	101.1kPa	GROUNDING:	Through AC Power Cord
TESTED BY:	May Wang	DATE OF TEST:	March 12, 2011
TEST REFERENCE:	ANSI C63.4-2009, FCC/OST MP-5:1986		
TEST PROCEDURE:	The EUT was set up according to the guideline of ANSI C63.4-2009 & FCC MP-5 for conducted emissions. The measurement was using a AMN on each line and an EMI receiver peak scan was made at the frequency measurement range. The six highest significant peaks were then marked, and these signals were then quasi-peaked and averaged. The frequency range investigated was from 150kHz to 30MHz.		
TESTED RANGE:	150kHz to 30MHz		
TEST VOLTAGE:	120VAC / 60Hz		
RESULTS:	The EUT meets the requirements of test reference for Conducted Emissions. The test results relate only to the equipment under test provided by client.		
CHANGES OR MODIFICATIONS:	There were no modifications installed by EMC Compliance Management Group., (China) test personnel.		
M. UNCERTAINTY:	±2.5 dB		



Line L Conducted Emission Graph



Line N Conducted Emission Graph

Test Data:

Line L/N	Frequency (MHz)	Corrected QP Level (dBuV)	Limits QP (dBuV)	Margin QP (dB)	Corrected AVE Level (dBuV)	Limits AVE (dBuV)	Margin AV (dB)
L	0.155	42.9	66.0	-23.1	15.6	56.0	-40.4
L	0.285	36.5	60.5	-24.0	8.9	50.5	-41.6
L	0.365	39.6	59.8	-20.2	11.6	49.8	-38.2
N	0.165	43.2	66.0	-22.8	14.5	56.0	-41.5
N	0.335	39.8	59.8	-20.0	12.1	49.8	-37.7
N	0.200	36.1	60.5	-24.4	15.6	50.5	-34.9

Note: All readings are using a bandwidth of 9 kHz, with a 500 ms sweep time.

Test Equipments List:

Test Equipment	Manufacturer	Model No.	Serial No.	Last Cal.	Cal. Due
EMI test receiver	R&S	ESIB-26	100174	11/19/2010	11/18/2011
LISN	R&S	ESH2-Z5	100091	11/19/2010	11/18/2011
Transient Limiter	Agilent	11947A	3107A0364 8	11/19/2010	11/18/2011
Shielding Room	TDK	8m×4m×3m	N/A	04/17/2010	04/16/2011

Note: All testing were performed using internationally recognized standards. All test instruments were calibrated and traceable to the National Institute of Standards and Technology (NIST).

SIGNED BY: May Wang
ENGINEER

REVIEWED BY: Janeyan
SENIOR ENGINEER

Report #: GUA-1103-10583-FCC ID

Prepared for Guangdong Midea Microwave and Electrical Appliances Manufacturing Co.,Ltd

Prepared by EMC Compliance Management Group.

Page 26 of 31

Conducted Emission Test Set-up:



ATTACHMENT 6 – RADIATED EMISSION TEST RESULTS

CLIENT:	Guangdong Midea Microwave and Electrical Appliances Manufacturing Co.,Ltd.	TEST STANDERD:	FCC Part 18
MODEL NUMBERS:	MM720CYY-PM	PRODUCT:	Microwave Oven
MODEL TESTED:	MM720CZE-PM	EUT DESIGNATION:	Home or Office
TEMPERATURE:	22°C	HUMIDITY:	60%RH
ATM PRESSURE:	101.1kPa	GROUNDING:	Through AC Power Cord
TESTED BY:	May Wang	DATE OF TEST:	March 12, 2011
TEST REFERENCE:	ANSI C63.4-2009, FCC/OST MP-5:1986		
TEST PROCEDURE:	<p>The EUT was set up according to the guidelines of ANSI C63.4-2009 & FCC MP-5 for radiated emissions. Microwave Oven (Over The Range) was placed on a 1m *1.5m nonconductive table. The top of the table is 1.0 m above the ground. The table is placed on a flush mounted metal turntable. An EMI receiver peak scan was made at the frequency measurement range (pre-scan) in an Anechoic chamber. Signal discrimination was then performed and the significant peaks marked. All data was recorded in Quasi-peak detection mode from 30 MHz to 1GHz and average detector mode above 1GHz.</p> <p>The following data lists the significant emission frequencies, measured levels, correction factors (including cable and antenna correction factors), and the corrected readings against the limits. Explanation of the Correction Factor are given as follows:</p> <p>FS= RA + AF + CF - AG</p> <p>Where: FS = Field Strength</p> <p>RA = Receiver Amplitude</p> <p>AF = Antenna Factor</p> <p>CF = Cable Attenuation Factor</p> <p>AG = Amplifier Gain</p>		
TESTED RANGE:	30MHz to 24.5GHz		
TEST VOLTAGE:	120VAC / 60Hz		
RESULTS:	The EUT meets the requirements of test reference for Radiated Emissions. The test results relate only to the equipment under test provided by client.		
CHANGES OR MODIFICATIONS:	There were no modifications installed by EMC Compliance Management Group., (China) test personnel.		
M. UNCERTAINTY:	± 3.2 dB		

Field strength limits for out-of-band emissions :

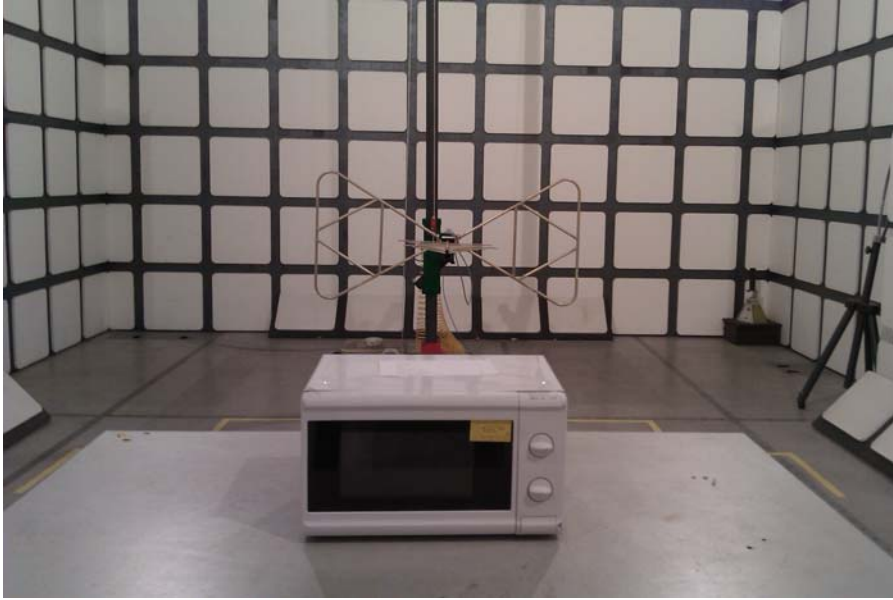
For RF output power <500W, Limit at 300m = 27.96dBuV/m

For RF output power >500W, Limit at 300m = $20\log[25*\text{SQRT}(\text{Power}/500)]\text{dBuV/m}$

Test Data:

30MHz - 1GHz						
<i>Frequency [MHz]</i>	<i>Antenna Polarization [V/H]</i>	<i>Corrected Reading [dB_μV/m]</i>	<i>Factor (dB)</i>	<i>Field Strength [dB_μV/m]</i>	<i>Delta, QP [dB]</i>	<i>3 Meters Limits [dB_μV/m]</i>
843.186	V	49.28	23.08	26.2	-42.0	68.2
706.493	V	53.84	21.54	32.3	-35.9	68.2
236.052	V	32.64	11.14	21.5	-46.7	68.2
978.617	H	62.7	23.80	38.9	-29.3	68.2
498.477	H	43.16	18.26	24.9	-43.3	68.2
239.940	H	32.34	11.14	21.2	-47.0	68.2
<p>Note: 1) All readings are quasi-peak unless stated otherwise, using a bandwidth of 120kHz, with a 60s sweep time. A video filter was not used. 2) Field Strength = Read Level + Factor, Factor = Antenna Factor + Cable Loss - Preamp Factor.</p>						
1GHz - 25GHz						
<i>Frequency [MHz]</i>	<i>Antenna Polarization [V/H]</i>	<i>Corrected Reading [dB_μV/m]</i>	<i>Factor (dB)</i>	<i>Field Strength [dB_μV/m]</i>	<i>Delta, AV [dB]</i>	<i>3 Meters Limits [dB_μV/m]</i>
4894.0	V	44.17	3.27	40.9	-27.3	68.2
7238.0	V	46.38	6.68	39.7	-28.5	68.2
9824.0	V	59.11	11.21	47.9	-20.3	68.2
1451.3	H	46.82	-8.28	55.1	-13.1	68.2
1718.8	H	48.92	-8.28	57.2	-11.0	68.2
6637.0	H	49.78	5.58	44.2	-24.0	68.2
<p>Note: 1) All readings are average unless stated otherwise, using a bandwidth of 1MHz, with a 60s sweep time. A video filter was not used. 2) Field Strength = Read Level + Factor, Factor = Antenna Factor + Cable Loss - Preamp Factor.</p>						

Radiated Emission Test Set-up (30~1000MHz):



Radiated Emission Test Set-up (1~25GHz) :

