



FCC PART18 EMC TEST REPORT

Report No.: 20231217G16697X-E

Product Name: Microwave Oven

Trade Name: Midea, SHARP, Walmart

Model No. : EM262A2YC-P1, XM262A2SR-P, XM262AYY-P(E),
XM262AYYY-P(E), FGMO226NUF, FGMO226NUD, FPMO227NUF,
SMC2265GS, MS33018306599, EM262AYY-P1, EM262AYYY-P1,
MS8436193153-01

FCC ID : VG8XM262AYY2M392

Applicant: Guangdong Midea Kitchen Appliances Manufacturing Co., Ltd.

Received Date: 2023.12.01

Test Data: 2023.12.04

Issued by: CCIC Southern Testing Co.,Ltd.

Lab Location: Electronic Testing Building, No.43 Shahe Road, Xili Street, Nanshan District, Shenzhen, Guangdong, China

Tel: 86 755 26627338 **Fax:** 86 755 26627238

This test report consists of **22** pages in total. It may be duplicated completely for legal use with the approval of the applicant. It should not be reproduced except in full, without the written approval of our laboratory. The client should not use it to claim product endorsement by CCIC-SET. The test results in the report only apply to the tested sample. The test report shall be invalid without all the signatures of testing engineers, reviewer and approver. Any objections must be raised to CCIC-SET within 15 days since the date when the report is received. It will not be taken into consideration beyond this limit.



Test Report

Product Name..... Microwave Oven

Model No. EM262A2YC-P1, XM262A2SR-P, XM262AYY-P(E),
 XM262AYYY-P(E), FGMO226NUF, FGMO226NUD,
 FPMO227NUF, SMC2265GS, MS33018306599,
 EM262AYY-P1, EM262AYYY-P1, MS8436193153-01

Trade name..... Midea, SHARP, Walmart

Applicant..... Guangdong Midea Kitchen Appliances Manufacturing Co., Ltd.

Applicant Address..... No.6, Yong An Road, Beijiao, Shunde, Foshan, China

Manufacturer Guangdong Midea Kitchen Appliances Manufacturing Co., Ltd.

Manufacturer Address No.6, Yong An Road, Beijiao, Shunde, Foshan, China

Test Standards 47 CFR Part 18

Test Result..... PASS

Tested by Ruihong Xie
 Ruihong Xie Test Engineer 2023.12.07

Reviewed by Chris You
 Chris You Senior Engineer 2023.12.07

Approved by Yang Fan
 Yang Fan, Manager 2023.12.07



TABLE OF CONTENTS

| | | |
|---|---|-----------|
| 1. | GENERAL INFORMATION | 5 |
| 1.1 | GENERAL DESCRIPTION OF EUT | 5 |
| 1.2 | Test Standards and Results..... | 7 |
| 1.3 | Facilities and Accreditations..... | 8 |
| 1.3.1 | Facilities | 8 |
| 1.3.2 | Test Environment Conditions..... | 8 |
| 1.3.3 | Measurement Uncertainty | 9 |
| 2. | EQUIPMENTS LIST | 9 |
| 3. | EMC EMISSION TEST..... | 10 |
| 3.1 | Test Procedure..... | 10 |
| 3.1.1 | Frequency For Normal Voltage | 10 |
| 3.1.2 | Frequency For Line Voltage..... | 10 |
| 3.1.3 | Measurement data | 11 |
| 3.2 | RADIATION HAZARD TEST..... | 11 |
| 3.2.1 | Test Setup..... | 11 |
| 3.2.2 | Limit..... | 11 |
| 3.2.3 | Test results..... | 11 |
| 3.3 | RF OUTPUT POWER MEASUREMENT | 11 |
| 3.3.1 | Test Standard..... | 11 |
| 3.3.2 | EUT Operating mode | 12 |
| 3.3.3 | Test Data..... | 12 |
| 4. | CONDUCTED EMISSION | 13 |
| 4.1.1 | Conducted Emission Limit..... | 13 |
| 4.1.2 | Test Procedure..... | 13 |
| 4.1.3 | Test Setup..... | 13 |
| 5. | RADIATED EMISSION | 16 |
| 5.1.1 | Radiated Emission Limits | 16 |
| 5.1.2 | Test Setup..... | 16 |
| 5.1.3 | Test Procedure..... | 17 |
| APPENDIX I: PHOTOGRAPHS OF EMC TEST CONFIGURATION..... | | 21 |



| Change History | | |
|----------------|------------|-------------------|
| Issue | Date | Reason for change |
| 1.0 | 2023.12.07 | First edition |
| | | |
| | | |



1. GENERAL INFORMATION

1.1 GENERAL DESCRIPTION OF EUT

EUT Name : Microwave Oven
 Trade Name..... : Midea, SHARP, Walmart
 Model..... : EM262A2YC-P1, XM262A2SR-P, XM262AYY-P(E), XM262AYYY-P(E), FGMO226NUF, FGMO226NUD, FPMO227NUF, SMC2265GS, MS33018306599, EM262AYY-P1, EM262AYYY-P1, MS8436193153-01 model designations as follows:

X=A or E, Indicate controller Type;
 M: indicate microwave function;
 262: "2" indicate the microwave output power is 1200W, "62" indicate cavity capacity is 45 liters;
 A: indicate the design No.;
 YY/YYYY: Indicate different appearance and color;
 -P/-E: Indicate various painted cavity;
 Model FGMO226NUF, FGMO226NUD, FPMO227NUF, SMC2265GS, MS33018306599, MS8436193153-01 is same with model EM262A2ME-P, the difference is only the model name, trade mark and appearance.
 Model EM262A2ME-P was chosen for the final testing.

Power Supply : 120VAC/60Hz
 Rated input Power(microwave): 1700W
 Rated output Power(microwave): 1200W
 Frequency..... : 2450MHz (ClassB/Group 2)
 Magnetron Model..... : 2M392J
 Magnetron Manufacturer ... : WITOL
 Description of Support Units: -Load for power output measurement: 1200 milliliters of water in the beaker located in the center of the oven.
 -Load for frequency measurement:1200milliliters of water in the beaker located in the center of the oven.
 -Load for measurement of radiation on second and third harmonic: Two loads, one of 840 and the other of 360 milliliters, of water are used. Each load is tested both with the beaker located in the center of the oven and with it in the right front corner.
 -Load for all other measurements: 840 milliliters of water, with

the beaker located in the center of the oven.

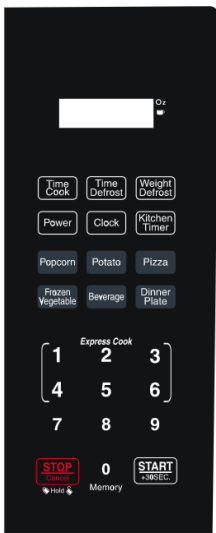


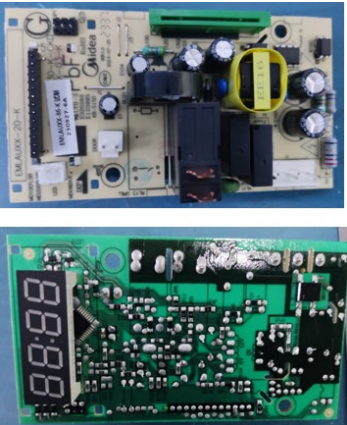
Note 1: The EUT have the following typical setups during the test:


Setup1: Microwave heating mode(According to FCC PART 18);

Note 2: For a more detailed description, please refer to Specification or User’s Manual supplied by the applicant and/or manufacturer.

Note 3: This is an updating report based the original report #: “RA230522-28295E-EMA1-00” which was re-tested on December 4th, 2023. Differences between them are as follow:

1. Difference in appearance & construction & PCB:

| No.: | Original | New | Difference(s) |
|------|---|--|---|
| 1 |  |  | Keypad: Updated front keypad to accommodate child lock function (Child resistant oven door function) |
| 2 |  |  | Mother board: Modified the peripheral circuit (non-RF circuit) and some individual components and PCB layout. The magnetron and other circuit are exactly same as before |

| | | | |
|---|----------------|---|---|
| 3 | Not Applicable |  | The new one adds a solenoid valve locking mechanism, the original is not. |
|---|----------------|---|---|

2. Others are the same as before.

1.2 Test Standards and Results

The objective of the report is to perform testing according to 47 CFR Part 18:

| No. | Identity | Document Title |
|-----|----------------|-------------------------|
| 1 | 47 CFR Part 18 | Radio Frequency Devices |

Test detailed items/section required by FCC rules and results are as below:

| Emission | | | |
|----------------|---|------------------|--------|
| Standard | Item | Class / Severity | Result |
| 47 CFR PART 18 | Conducted Emission (150 kHz to 30 MHz) | 18.307(b) | PASS |
| | Radiated Emission (30 MHz to 1 GHz) | 18.305(b) | PASS |



1.3 Facilities and Accreditations

1.3.1 Facilities

CNAS-Lab Code: L1659

CCIC-SET is a third party testing organization accredited by China National Accreditation Service for Conformity Assessment (CNAS) according to ISO/IEC 17025. The accreditation certificate number is L1659.

FCC-Registration No.: CN1283

CCIC Southern Testing Co., Ltd EMC Laboratory has been registered and fully described in a report filed with the FCC (Federal Communications Commission). The acceptance letter from the FCC is maintained in our files. Designation Number: CN1283, valid time is until June 30,2025.

ISED Registration: 11185A-1

CCIC Southern Testing Co., Ltd. EMC Laboratory has been registered by Certification and Engineering Bureau of Industry Canada for the performance of radiated measurements with Registration No. 11185A-1 on Aug. 04, 2016, valid time is until June 30,2025.

A2LA Code: 5721.01

CCIC-SET is a third party testing organization accredited by A2LA according to ISO/IEC 17025. The accreditation certificate number is 5721.01.

1.3.2 Test Environment Conditions

During the measurement, the environmental conditions were within the listed ranges:

| | |
|-----------------------------|--------------|
| Temperature (°C): | 15°C- 35°C |
| Relative Humidity (%): | 25% -75% |
| Atmospheric Pressure (kPa): | 86kPa-106kPa |



1.3.3 Measurement Uncertainty

The uncertainty is calculated using the methods suggested in the "Guide to the Expression of Uncertainty in Measurement" (GUM) published by ISO.

| | |
|---|-------------------|
| Uncertainty of Conducted Emission: | Uc = 3.2 dB (k=2) |
| Uncertainty of Radiated Emission:(30MHz~1GHz) | Uc = 5.8 dB (k=2) |
| Uncertainty of Radiated Emission:(1~18GHz) | Uc = 5.1 dB (k=2) |
| Radiation Hazard Measurement | Uc = 2.4 dB (k=2) |

2. EQUIPMENTS LIST

A. Equipment List:

| Description | Manufacturer | Model | Serial No. | Calibration Date | Calibration Due. Date |
|-----------------------|-------------------|---------------------------|------------|------------------|-----------------------|
| Test Receiver | Rohde & Schwarz | ESIB26 | A0304218 | 2023.10.20 | 2024.10.19 |
| LISN | ROHDE&SCHWARZ | NSLK 8127 | A210803670 | 2023.06.08 | 2024.06.07 |
| Shield Room | Xinju Electronics | L9000*W4500* H3100 | A181003230 | 2021.09.05 | 2024.09.04 |
| EMI Test Receiver | ROHDE&SCHWARZ | ESIB7 | A0501375 | 2023.03.16 | 2024.03.15 |
| Broadband Ant. | ETC | MCTD2786 | A150402240 | 2021.03.05 | 2024.03.04 |
| 3M Anechoic Chamber | Albatross | SAC-3MAC 9*6*6m | A0412375 | 2021.03.26 | 2024.03.25 |
| EMI Test Receiver | ROHDE&SCHWARZ | ESW26 | A180502935 | 2023.06.08 | 2024.06.07 |
| 5M Anechoic Chamber | Albatross | SAC-5MAC 12.8x6.8x6.4m | A0304210 | 2021.06.08 | 2024.06.07 |
| EMI Horn Ant. | ETC | 1209 | A150402241 | 2021.01.02 | 2024.01.01 |
| Spectrum Analyzer | ROHDE&SCHWARZ | ESW26 | A180502935 | 2023.06.08 | 2024.06.07 |
| Portable Spectrometer | ROHDE&SCHWARZ | FSH8 | A140401672 | 2023.02.14 | 2024.02.13 |
| Prode | ROHDE&SCHWARZ | TSEMF-B1 | A140401671 | 2023.02.14 | 2024.02.13 |



3. EMC EMISSION TEST

3.1 Test Procedure

Test Requirement: 47 CFR PART 18

Test Method: FCC/OST MP-5:1986

Power Supply: 120VAC/60Hz

Frequency Range: 2400-2500MHz

Detector: Peak

Limit: ISM equipment may be operated at any frequency above 9KHz and the frequency band 2400-2500MHz is allocated for use by ISM equipment

| ISM frequency | Tolerance |
|---------------|------------|
| 6.78 MHz | ±15.0 kHz |
| 13.56 MHz | ±7.0 kHz |
| 27.12 MHz | ±163.0 kHz |
| 40.68 MHz | ±20.0 kHz |
| 915 MHz | ±13.0 MHz |
| 2,450 MHz | ±50.0 MHz |
| 5,800 MHz | ±75.0 MHz |
| 24,125 MHz | ±125.0 MHz |
| 61.25 GHz | ±250.0 MHz |
| 122.50 GHz | ±500.0 MHz |
| 245.00 GHz | ±1.0 GHz |

3.1.1 Frequency For Normal Voltage

The operating frequency was measured using a spectrum analyzer. Starting with the EUT at room temperature, a 1200mL water load was placed in the center of the oven and the oven was operated at maximum output power. The fundamental operating frequency was monitored until the water load was reduced to 20 percent of the original load.

3.1.2 Frequency For Line Voltage

The EUT was operated / warmed by at least 10 minutes of use with a 1200mL water load at room temperature at the beginning of the test. Then the operating frequency was monitored as the input voltage was varied between 80 and 125 percent of the nominal rating.



3.1.3 Measurement data

| | |
|----------------|----------------|
| Operating Mode | Frequency(MHz) |
| Normal Voltage | 2432.9-2477.4 |
| Line Voltage | 2440.5-2481.6 |

3.2 RADIATION HAZARD TEST

3.2.1 Test Setup

The EUT was set-up according to the FCC MP-5 and FCC Part 18 for radiation hazard measurement. The measurement was using a microwave leakage meter to measure the radiation leakage in the as-received condition with the oven door closed A 840 mL water load in a breaker was located in the center of the oven and the microwave oven was set to maximum power. While the oven operating, the microwave meter will check the leakage and then record the maximum leakage.

3.2.2 Limit

A maximum of 1.0mW/cm²is allowed in according with the applicable FCC standards

3.2.3 Test results

| Test location | Test result (mW/cm ²) | Limit(mW/cm ²) | Verdict |
|---------------|-----------------------------------|----------------------------|---------|
| Left side | 0.40 | 1.0 | Pass |
| Right side | 0.33 | 1.0 | Pass |
| Front | 0.46 | 1.0 | Pass |
| Rear | 0.38 | 1.0 | Pass |

There was no microwave leakage exceeding a power level of 0.46 m W/cm²Observed at any point 5cm or more from the external surface of the oven

3.3 RF OUTPUT POWER MEASUREMENT

3.3.1 Test Standard

| | |
|------------------|-------------------|
| Test Requirement | 47 CFR PART 18 |
| Test Method | FCC/OST MP-5:1986 |
| Power Supply | 120VAC/60Hz |



3.3.2 EUT Operating mode

Test the EUT in microwave mode with full power.

3.3.3 Test Data

| Mass of Water(g) | Mass of the container(g) | ambient temperature (°C) | Initial temperature(°C) | Final temperature(°C) | Heating Time(S) | Output Power(Watt) |
|------------------|--------------------------|--------------------------|-------------------------|-----------------------|-----------------|--------------------|
| 1200 | 280 | 20.3 | 9.5 | 31.6 | 120 | 951.93 |

Formula:

$$P = \frac{4.2 \times m_w(T_2 - T_1) + 0.9 \times m_c(T_2 - T_0)}{t}$$

P is the microwave power output, in watts

M_w is the mass of the water, in grams

M_c is the mass of the container, in grams

T₀ is the ambient temperature, in degrees Celsius

T₁ is Initial temperature of the water, in degrees Celsius

T₂ is final temperature of the water, in degrees Celsius

T is heating time, in seconds, excluding the magnetron filament heating-up time

4. CONDUCTED EMISSION

4.1.1 Conducted Emission Limit

| Frequency range (MHz) | Conducted Limit (dB μ V) | |
|-----------------------|------------------------------|----------|
| | Quasi-peak | Average |
| 0.15 - 0.50 | 66 to 56 | 56 to 46 |
| 0.50 - 5 | 56 | 46 |
| 5 - 30 | 60 | 50 |

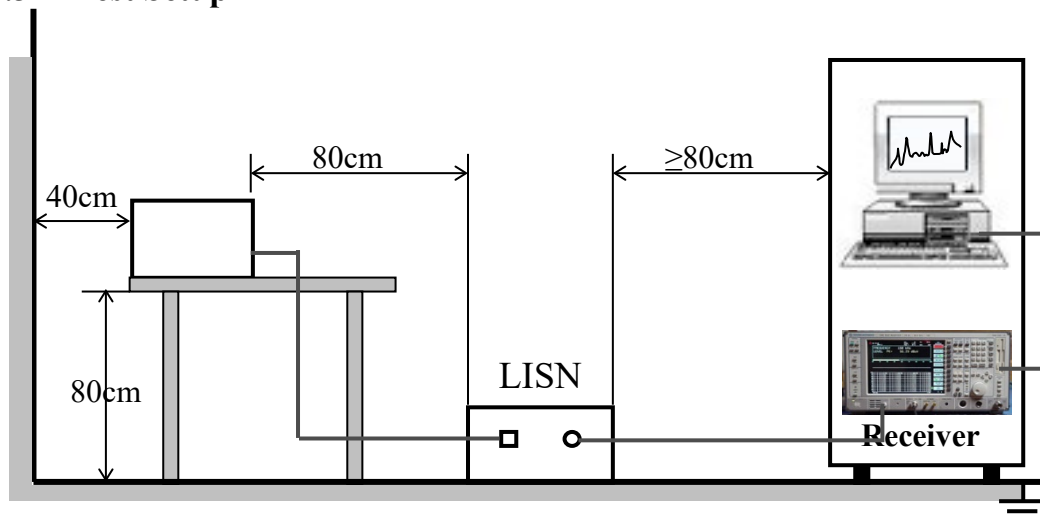
Note:

- The limit decreases linearly with the logarithm of the frequency in the range 0.15 MHz to 0.5 MHz.
- The lower limit is applicable at the transition frequency.

4.1.2 Test Procedure

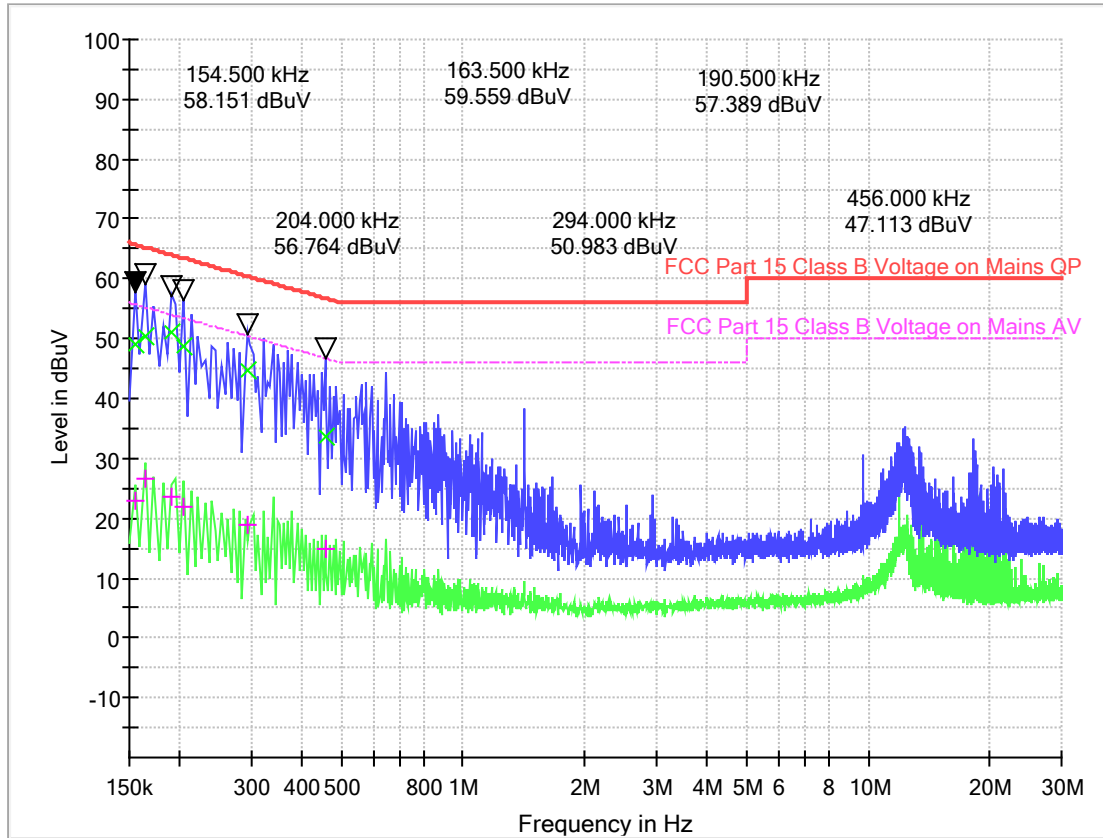
The EUT is placed on a 0.8m high insulating table, which stands on the grounded conducting floor, and keeps 0.4m away from the grounded conducting wall. The EUT is connected to the power mains through a LISN which provides 50 Ω /50 μ H of coupling impedance for the measuring instrument. The Common Antenna is used for the call between the EUT and the System Simulator (SS). A Pulse Limiter is used to protect the measuring instrument. The factors of the whole test system are calibrated to correct the reading.

4.1.3 Test Setup



A. Test Result:

Mains terminal disturbance voltage, Setup1,L phase

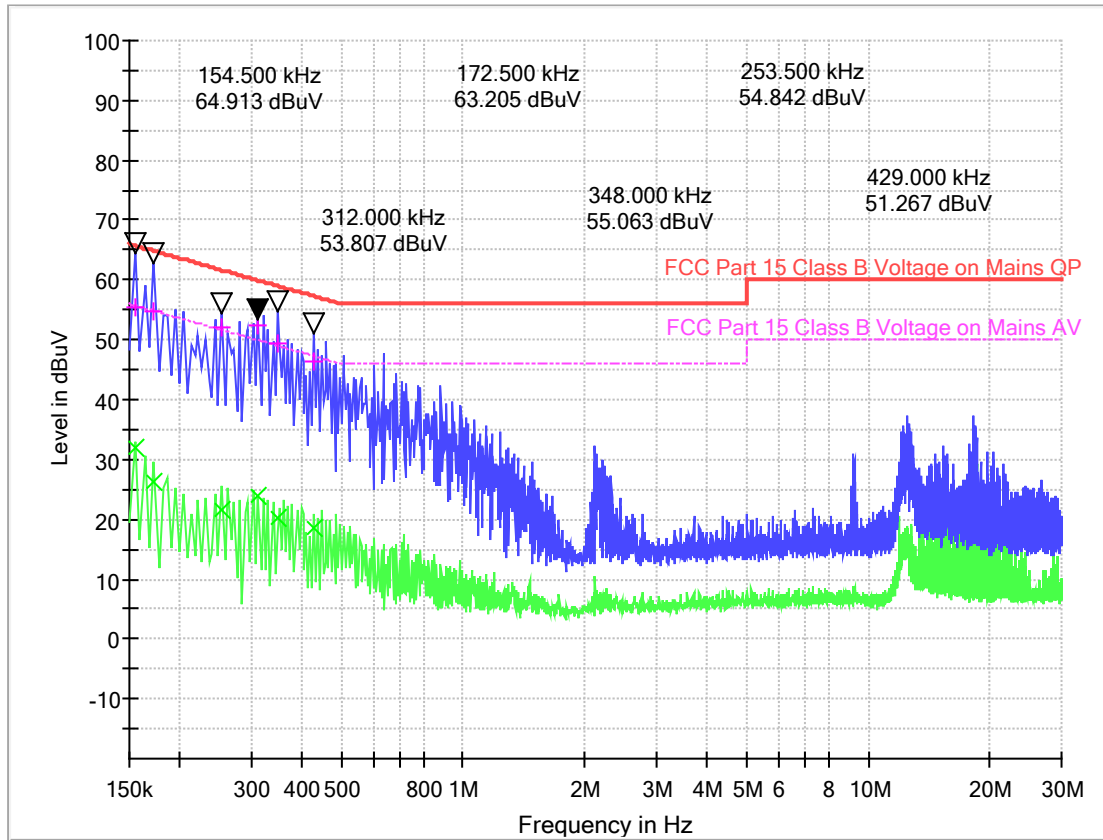


(Plot A: L Phase)

| Frequency (MHz) | Quasi Peak | Average (dB μ V) | Cable Loss (dB) | Corr. (dB) | Margin - QPK | Limit - QPK | Margin - AV | Limit - AV (dB μ V) |
|-----------------|------------|----------------------|-----------------|------------|--------------|-------------|-------------|-------------------------|
| 0.154500 | 49.17 | 22.79 | 0.1 | 11.0 | 16.58 | 65.8 | 32.96 | 55.8 |
| 0.163500 | 50.52 | 26.66 | 0.1 | 11.0 | 14.76 | 65.3 | 28.62 | 55.3 |
| 0.190500 | 50.98 | 23.42 | 0.1 | 11.1 | 13.03 | 64.0 | 30.59 | 54.0 |
| 0.204000 | 48.80 | 21.86 | 0.1 | 11.1 | 14.65 | 63.4 | 31.59 | 53.4 |
| 0.294000 | 44.84 | 18.73 | 0.1 | 11.1 | 15.57 | 60.4 | 31.68 | 50.4 |
| 0.456000 | 33.73 | 14.98 | 0.1 | 11.0 | 23.04 | 56.8 | 31.79 | 46.8 |



Mains terminal disturbance voltage, Setup 1, N phase



(Plot B: N Phase)

| Frequency (MHz) | Quasi Peak | Average (dB μ V) | Cable Loss (dB) | Corr. (dB) | Margin - QPK | Limit - QPK | Margin - AV | Limit - AV (dB μ V) |
|-----------------|------------|----------------------|-----------------|------------|--------------|-------------|-------------|-------------------------|
| 0.154500 | 55.33 | 31.83 | 0.1 | 10.9 | 10.42 | 65.8 | 23.92 | 55.8 |
| 0.172500 | 54.72 | 26.32 | 0.1 | 10.9 | 10.12 | 64.8 | 28.52 | 54.8 |
| 0.253500 | 51.92 | 21.45 | 0.1 | 10.9 | 9.72 | 61.6 | 30.19 | 51.6 |
| 0.312000 | 52.38 | 23.78 | 0.1 | 11.0 | 7.54 | 59.9 | 26.14 | 49.9 |
| 0.348000 | 49.53 | 20.31 | 0.1 | 10.9 | 9.48 | 59.0 | 28.70 | 49.0 |
| 0.429000 | 46.41 | 18.62 | 0.1 | 10.9 | 10.86 | 57.3 | 28.65 | 47.3 |

Test Result: PASS

5. RADIATED EMISSION

5.1.1 Radiated Emission Limits

- (a) ISM equipment operation on a frequency specified in §18.301 is permitted unlimited radiated energy in the band specified for that frequency.
- (b) The field strength levels of emissions which lie outside the bands specified in §18.301, unless otherwise indicated, shall not exceed the following:

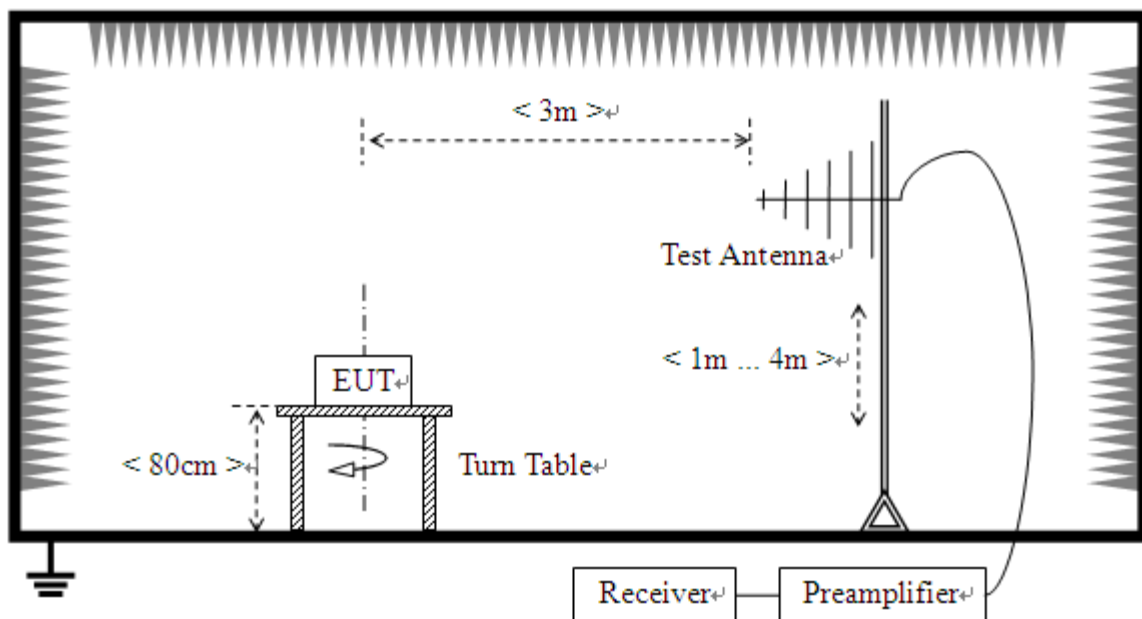
| RF Power generated by equipment(watts) | Field strength limit(uV/m) @300m |
|--|--------------------------------------|
| Below 500 | 25 |
| 500 or more | $25 * \text{SQRT}(\text{power}/500)$ |

Power = 951.93W

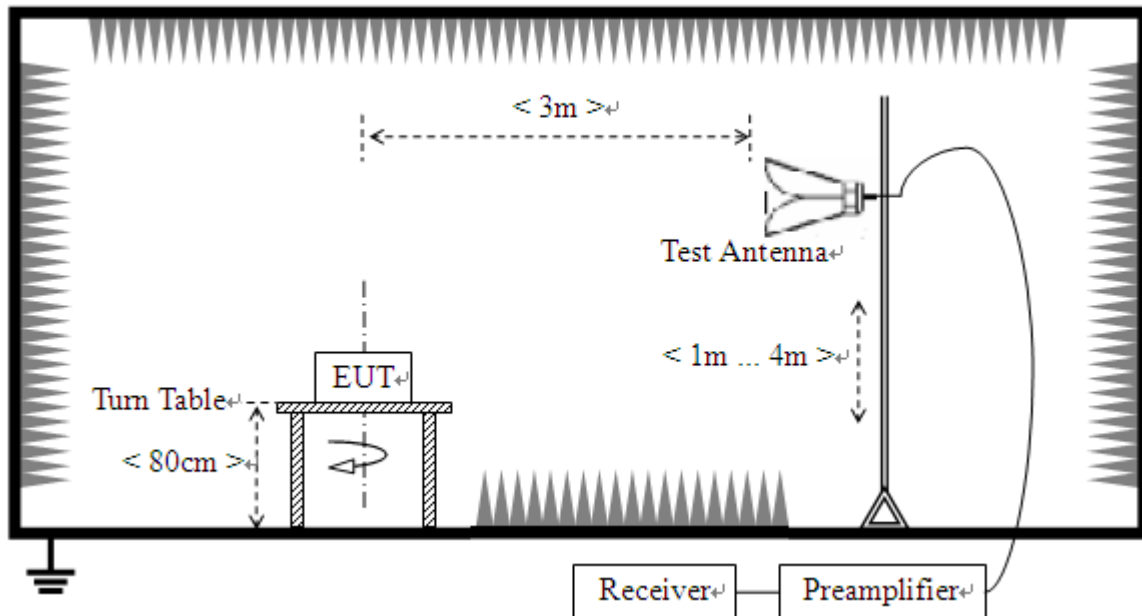
Limit = $20 \lg(25 * \text{SQRT}(\text{power}/500)) + 20 \lg(300/3)$ @ 3m distance.

5.1.2 Test Setup

For radiated emissions from 30MHz to 1GHz



For radiated emissions above 1GHz



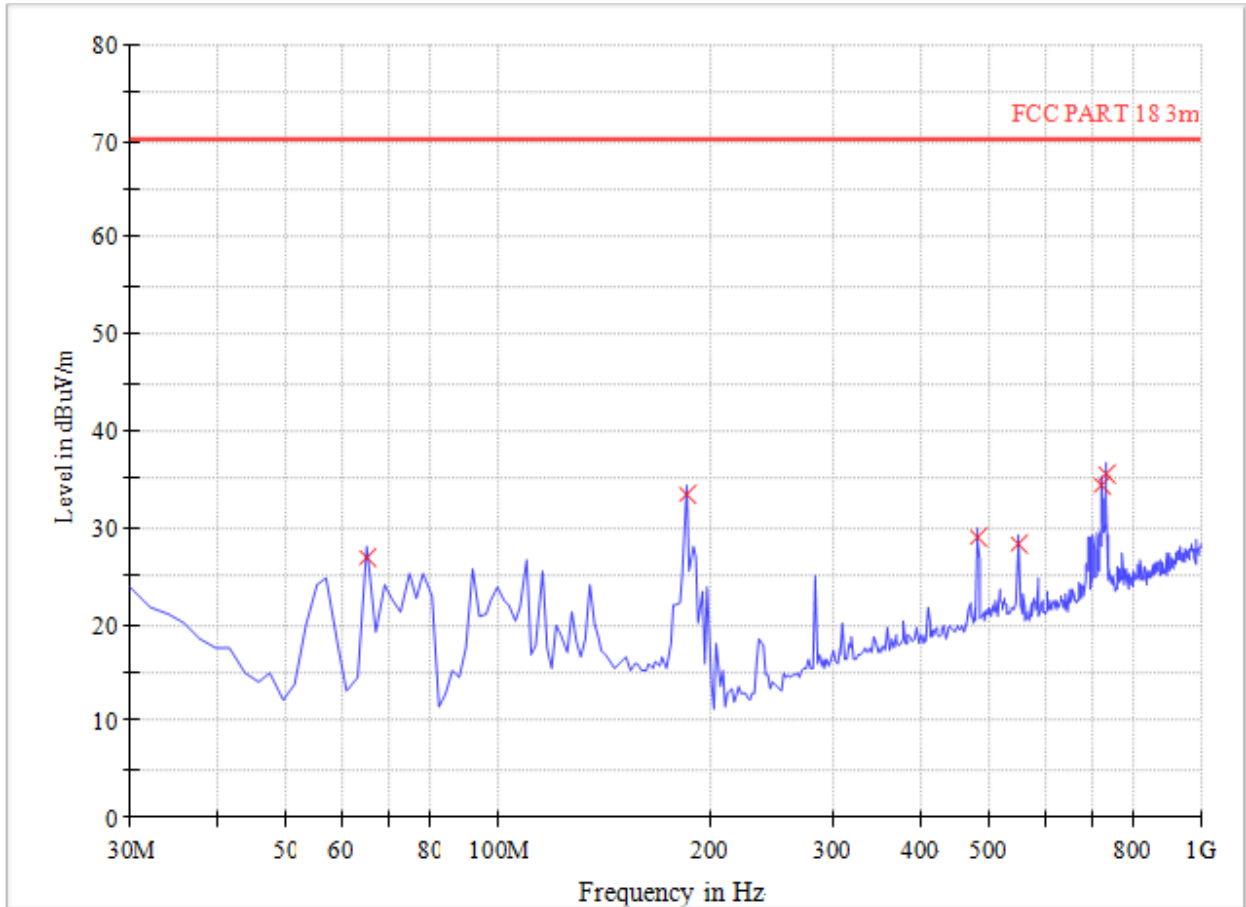
5.1.3 Test Procedure

- a. The measuring distance of at 3 m shall be used for measurements at frequency up to 1GHz. For frequencies above 1GHz, any suitable measuring distance may be used.
- b. The EUT was placed on the top of a rotating table 0.8 meters above the ground at a 3 meter open area test site. The table was rotated 360 degrees to determine the position of the highest radiation.
- c. The height of the equipment or of the substitution antenna shall be 0.8 m; the height of the test antenna shall vary between 1 m to 4 m. Both horizontal and vertical polarizations of the antenna are set to make the measurement
- d. The initial step in collecting conducted emission data is a spectrum analyzer peak detector mode pre-scanning the measurement frequency range. Significant peaks are then marked and then Quasi Peak detector mode re-measured.
- e. If the Peak Mode measured value compliance with and lower than Quasi Peak Mode Limit, the EUT shall be deemed to meet QP Limits and then no additional QP Mode measurement performed.
- f. For the actual test configuration, please refer to the related Item –EUT Test Photos.

Note: Both horizontal and vertical antenna polarities were tested and performed pretest to three orthogonal axis. The worst case emissions were reported

Test Result:

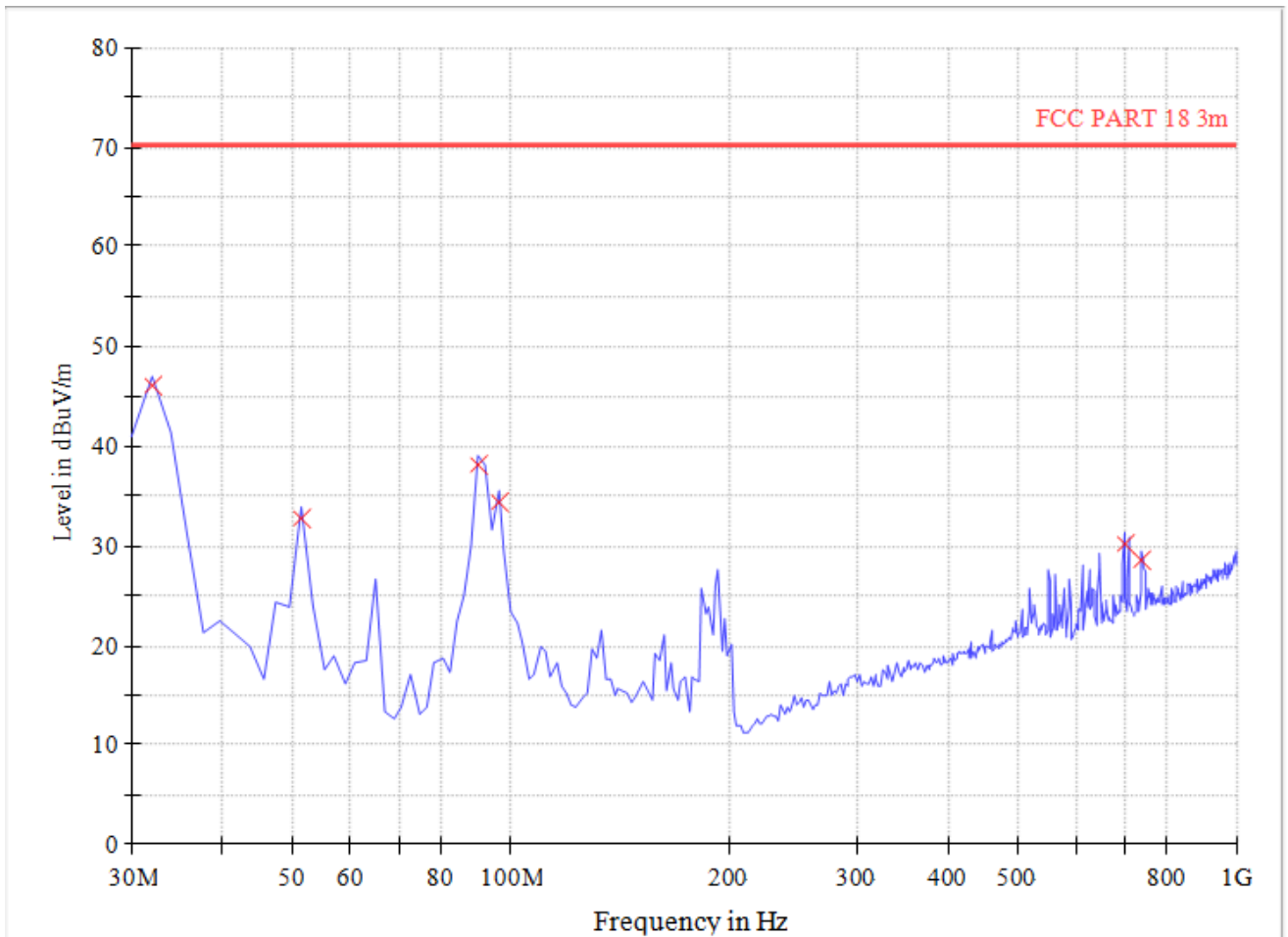
Radiation disturbances, antenna polarization: Setup1, Horizontal



(Plot A: Test Antenna Horizontal 30M - 1G)

| Frequency (MHz) | Quasi Peak (dBµV/m) | Bandwidth (kHz) | Antenna height (cm) | Limit (dBµV/m) | Margin (dB) | Antenna | Verdict |
|-----------------|---------------------|-----------------|---------------------|----------------|-------------|------------|---------|
| 103.84 | 24.11 | 120.000 | 100.0 | 70.76 | 46.65 | Horizontal | Pass |
| 187.48 | 29.01 | 120.000 | 100.0 | 70.76 | 41.75 | Horizontal | Pass |
| 195.24 | 32.49 | 120.000 | 100.0 | 70.76 | 38.27 | Horizontal | Pass |
| 613.20 | 33.96 | 120.000 | 100.0 | 70.76 | 36.80 | Horizontal | Pass |
| 679.24 | 29.44 | 120.000 | 100.0 | 70.76 | 41.32 | Horizontal | Pass |
| 694.84 | 29.27 | 120.000 | 100.0 | 70.76 | 41.49 | Horizontal | Pass |

Radiation disturbances, antenna polarization: Setup1, Vertical



(Plot B: Test Antenna Vertical 30M - 1G)

| Frequency (MHz) | Quasi Peak (dB μ V/m) | Bandwidth (kHz) | Antenna height (cm) | Limit (dB μ V/m) | Margin (dB) | Antenna | Verdict |
|-----------------|---------------------------|-----------------|---------------------|----------------------|-------------|----------|---------|
| 31.96 | 46.03 | 120.000 | 100.0 | 70.76 | 24.73 | Vertical | Pass |
| 51.40 | 32.84 | 120.000 | 100.0 | 70.76 | 37.92 | Vertical | Pass |
| 90.28 | 38.10 | 120.000 | 100.0 | 70.76 | 32.66 | Vertical | Pass |
| 96.12 | 34.45 | 120.000 | 100.0 | 70.76 | 36.31 | Vertical | Pass |
| 700.60 | 30.28 | 120.000 | 100.0 | 70.76 | 40.48 | Vertical | Pass |
| 741.52 | 28.43 | 120.000 | 100.0 | 70.76 | 42.33 | Vertical | Pass |

**Above 1GHz, Setup1**

| NO. | Freq. [MHz] | Level [dB μ V/m] | Factor [dB] | Limit [dB μ V/m] | Margin [dB] | Height [cm] | Angle [°] | Polarity |
|-----|-------------|----------------------|-------------|----------------------|-------------|-------------|-----------|----------|
| 1 | 1225.31 | 50.19 | -14.90 | 70.76 | 20.57 | 100 | 322 | Vertical |
| 2 | 2330.58 | 50.13 | -11.33 | 70.76 | 20.63 | 100 | 143 | Vertical |
| 3 | 3180.80 | 59.42 | -7.96 | 70.76 | 11.34 | 100 | 300 | Vertical |
| 4 | 4273.32 | 60.41 | -3.23 | 70.76 | 10.35 | 100 | 76 | Vertical |
| 5 | 9081.27 | 61.84 | 3.95 | 70.76 | 8.92 | 100 | 114 | Vertical |
| 6 | 15882.97 | 60.49 | 8.30 | 70.76 | 10.27 | 100 | 108 | Vertical |

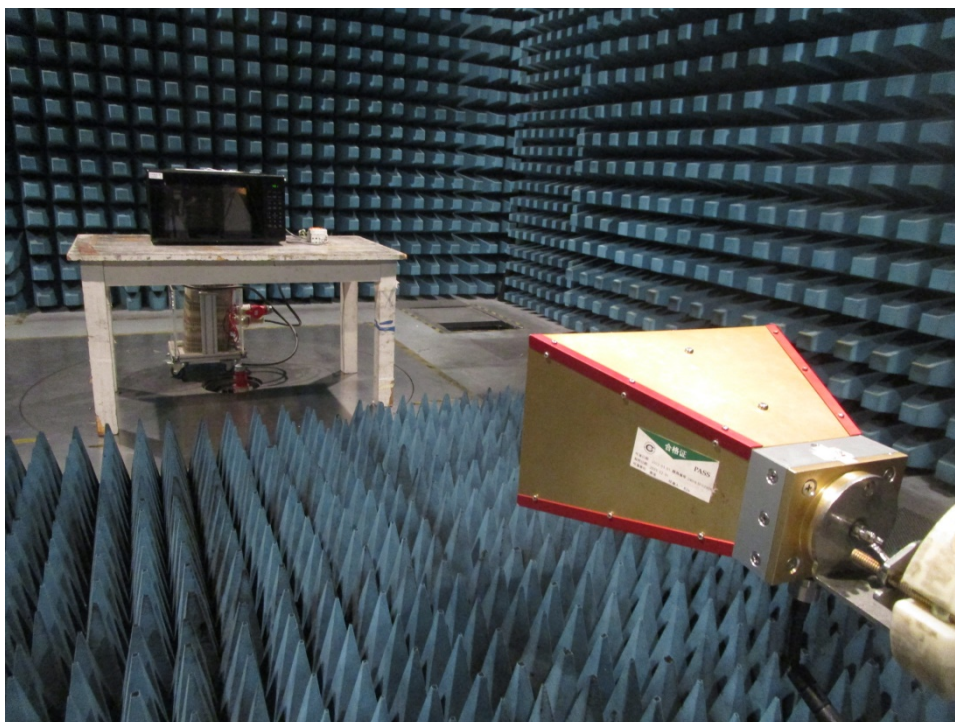
| NO. | Freq. [MHz] | Level [dB μ V/m] | Factor [dB] | Limit [dB μ V/m] | Margin [dB] | Height [cm] | Angle [°] | Polarity |
|-----|-------------|----------------------|-------------|----------------------|-------------|-------------|-----------|------------|
| 1 | 1225.31 | 52.69 | -14.90 | 70.76 | 18.07 | 100 | 209 | Horizontal |
| 2 | 2351.84 | 50.33 | -11.14 | 70.76 | 20.43 | 100 | 181 | Horizontal |
| 3 | 3057.51 | 49.99 | -8.54 | 70.76 | 20.77 | 100 | 52 | Horizontal |
| 4 | 4269.07 | 58.83 | -3.28 | 70.76 | 11.93 | 100 | 334 | Horizontal |
| 5 | 6641.16 | 60.78 | 2.37 | 70.76 | 9.98 | 100 | 173 | Horizontal |
| 6 | 15763.94 | 62.14 | 7.72 | 70.76 | 8.62 | 100 | 287 | Horizontal |

APPENDIX I: PHOTOGRAPHS OF EMC TEST CONFIGURATION

1. Radiated Emission Measurement below 1GHz



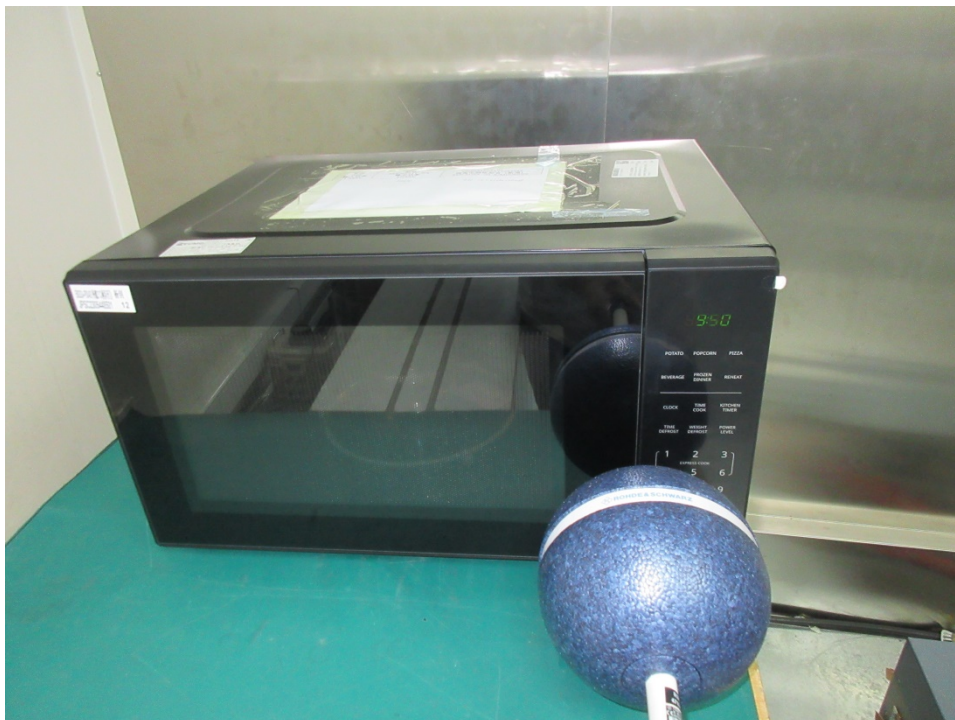
2. Radiated Emission Measurement above 1GHz



3. Conducted emission at AC mains input/output port Measurement



4. Radiation Hazard Test



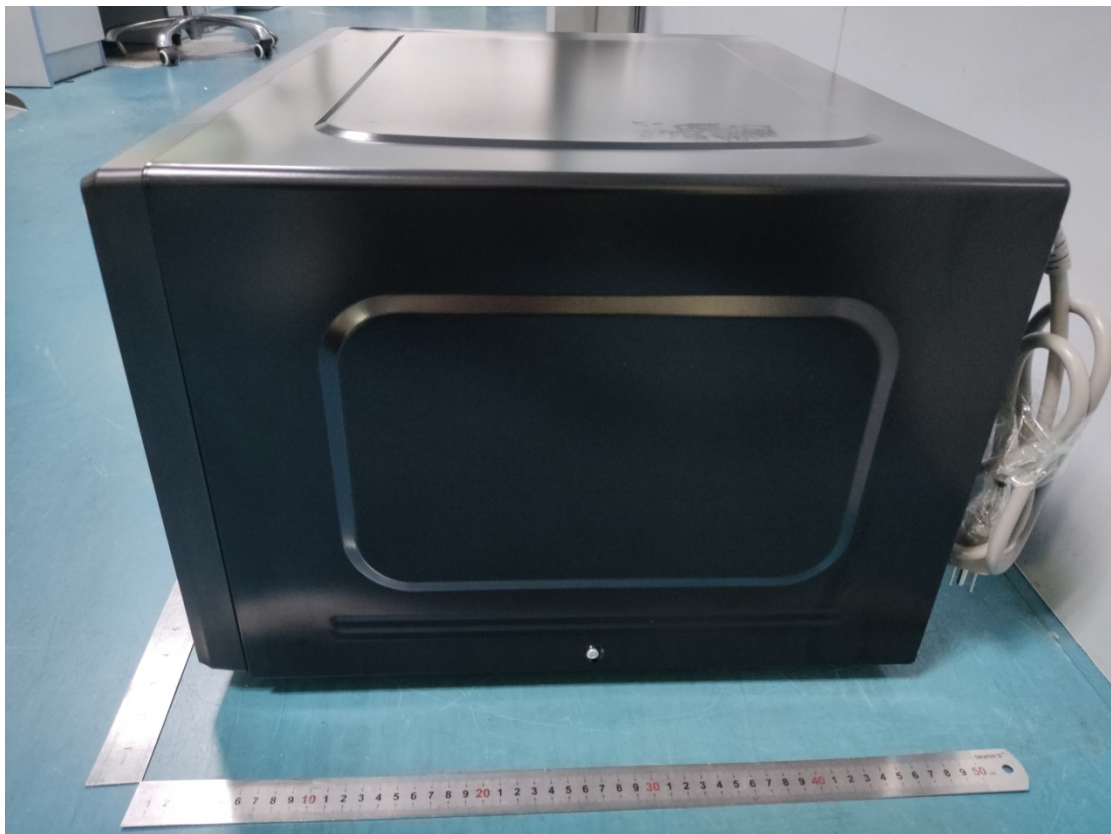
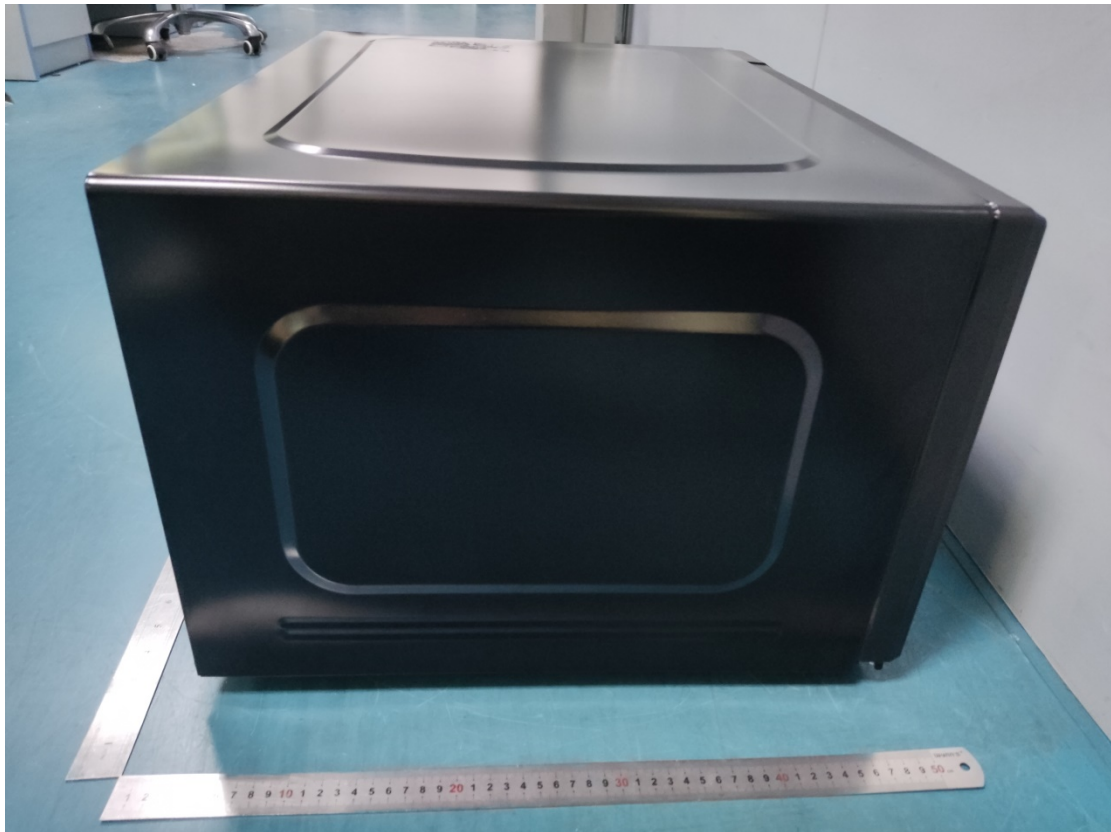


APPENDIX II: PHOTOGRAPHS OF PRODUCT PHOTO

External Photo

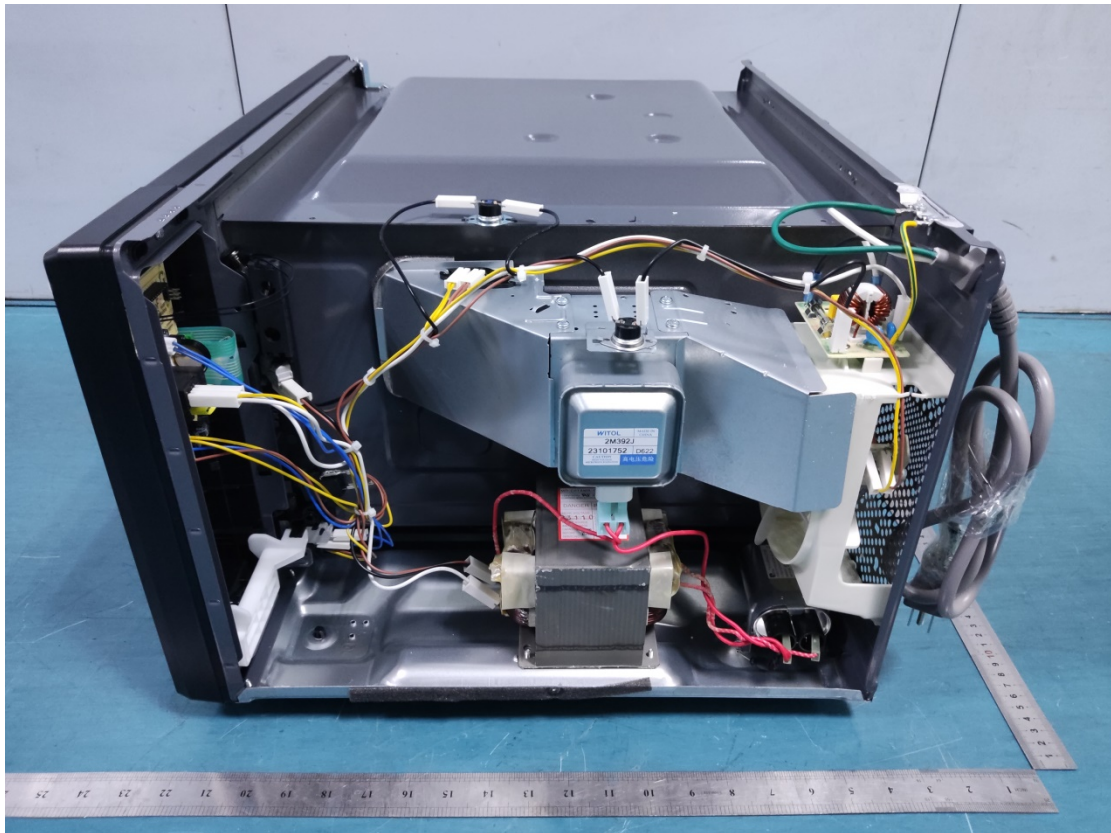


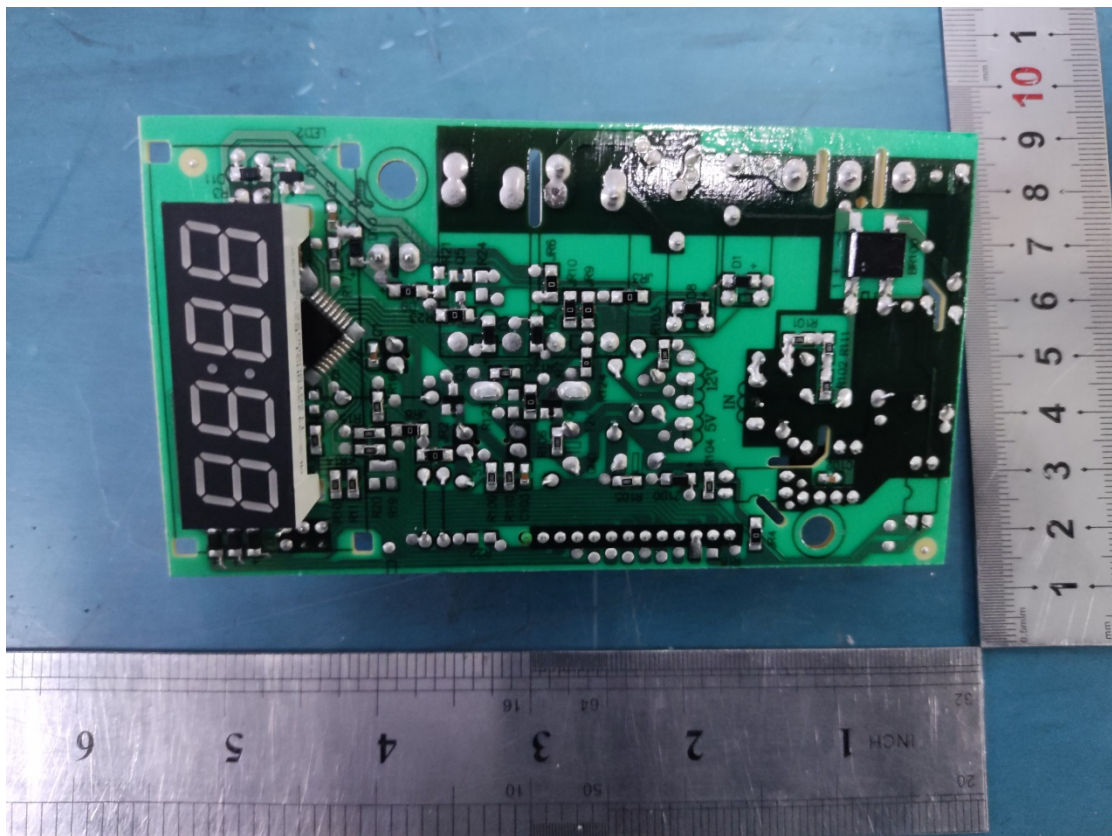
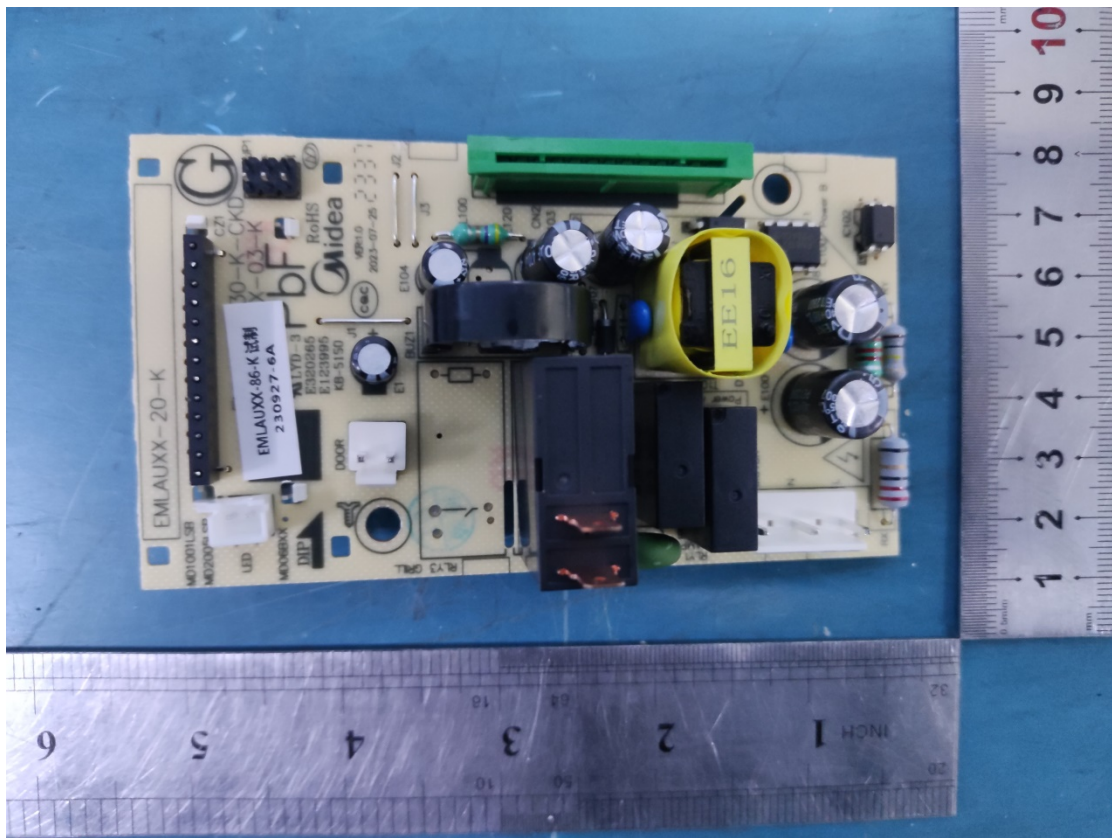


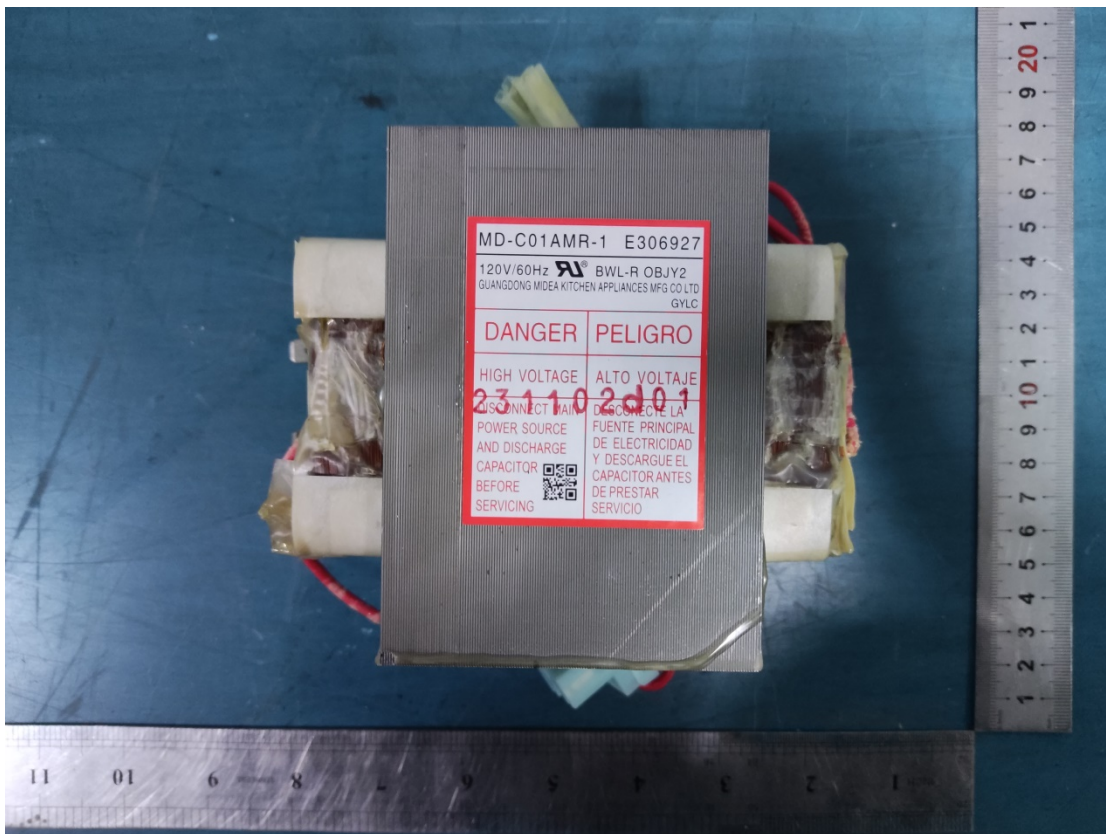
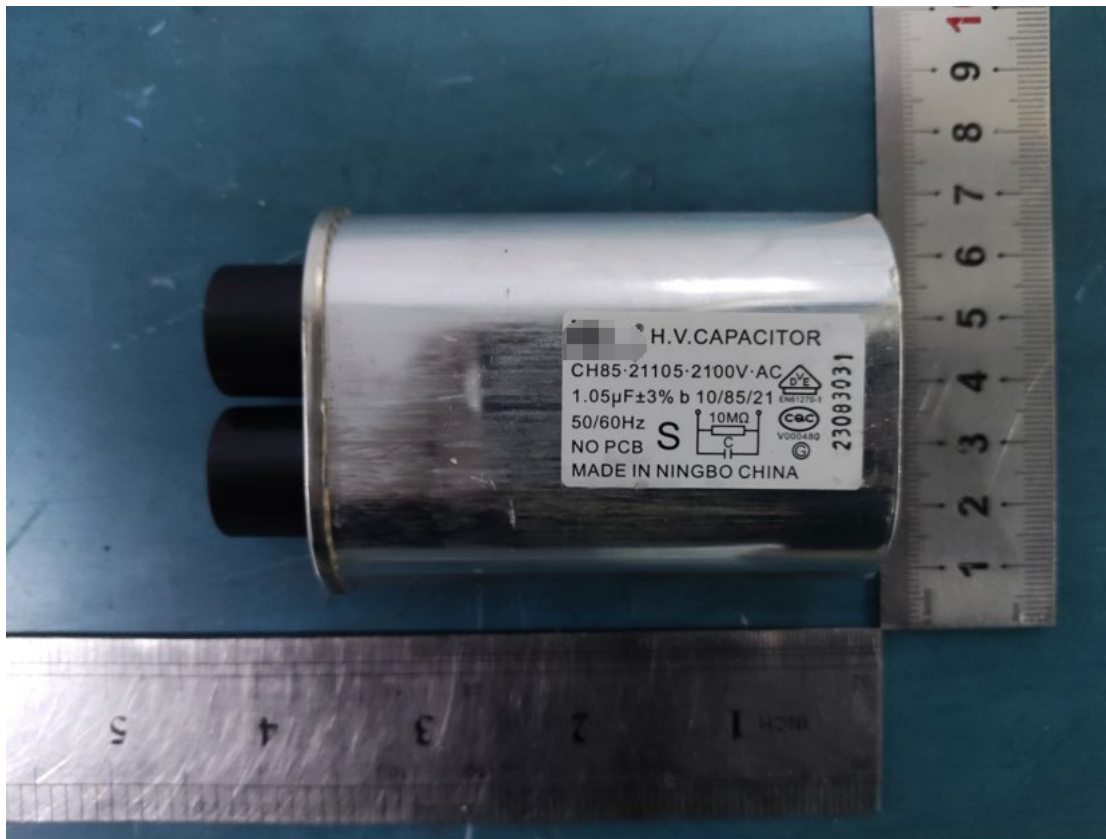




Internal Photo







*** End of Report ***