



*Request for Class II Permissive Change(C2PC)*

**FCC ID: VG8XM025FXX-Y**

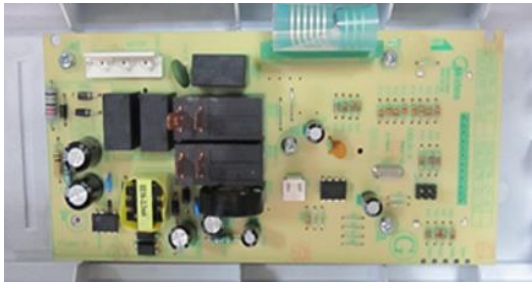
**Data: 2020-7-8**

**TO: Federal Communication Commission**

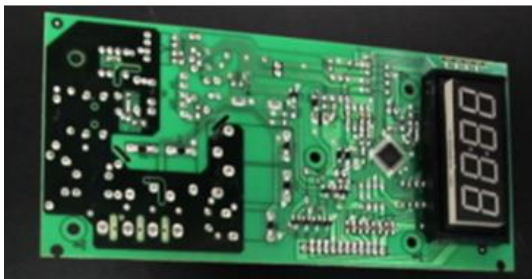
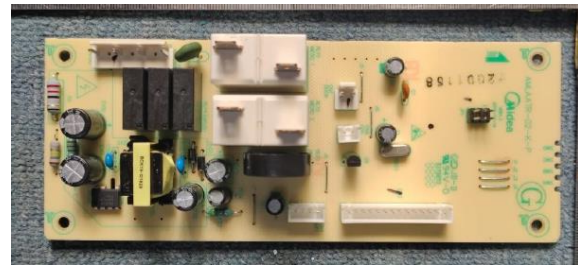
Please be notified that we, the undersigned, **Guangdong Midea Kitchen Appliances Manufacturing Co.,Ltd.** declare that the reasons for this class II permissive change are as below:

1. Changed Mother -board as below.

Original Mother board-top view



New Mother board –top view



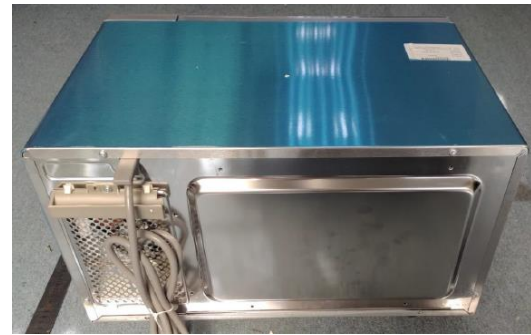
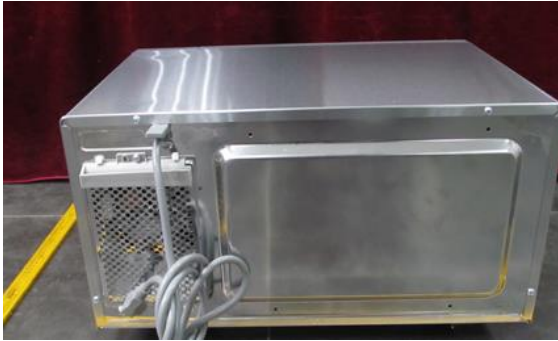
Changed PCB layout and some electronic components. Input/output and power are the same as before.

2. The EUT exterior view as below:

The original front/back view(AM series)



The new front/back view(AM series)



“AM” series and “EM” series only control keypad type differences. Others are the same as before.  
“A” is rotating type knob type, “E” is film type keypad.

Sincerely,

广东美的厨房电器制造有限公司  
Guangdong Midea Kitchen  
Appliances Manufacturing Co., Ltd  
*xue wen fei*

xue wenfei

Guangdong Midea Kitchen Appliances Manufacturing Co.,Ltd.

Phone : +86-757-26306480

FAX :+86-757-26656995

E-Mail: xuewf1@midea.com.cn