



# FCC PART18 TEST REPORT

**Report No.:** SET2022-04811

**Product Name:** Microwave Oven

**Trade Name:** Midea, Panasonic

**Model No. :** TM034K##-P0H, TM034K\*\*\*-P0H, TM034K##-P0, TM034K\*\*\*-P0,  
NN-SG6###

**FCC ID :** VG8TM034KYYC

**Applicant:** Guangdong Midea Kitchen Appliances Manufacturing Co., Ltd.

**Received Date:** 2022.04.22

**Test Data:** 2022.04.22-2022.04.28

**Issued by:** CCIC Southern Testing Co., Ltd.

**Lab Location:** ElectronicTestingBuilding, No.43ShaheRoad, Xili Street, Nanshan  
District, Shenzhen, Guangdong, China

**Tel:** 86 755 26627338    **Fax:** 86 755 26627238

This test report consists of **22** pages in total. It may be duplicated completely for legal use with the approval of the applicant. It should not be reproduced except in full, without the written approval of our laboratory. The client should not use it to claim product endorsement by CCIC-SET. The test results in the report only apply to the tested sample. The test report shall be invalid without all the signatures of testing engineers, reviewer and approver. Any objections must be raised to CCIC-SET within 15 days since the date when the report is received. It will not be taken into consideration beyond this limit.



### Test Report

**Product Name**..... Microwave Oven

**Model No.** ..... TM034K##-P0H, TM034K\*\*\*-P0H, TM034K##-P0,  
TM034K\*\*\*-P0, NN-SG6###

**Trade name**..... Midea, Panasonic

**Applicant**..... Guangdong Midea Kitchen Appliances Manufacturing Co., Ltd.

**Applicant Address**..... No.6, Yong An Road, Beijiao, Shunde, Foshan, China

**Manufacturer** ..... Guangdong Midea Kitchen Appliances Manufacturing Co., Ltd.

**Manufacturer Address** ..... No.6, Yong An Road, Beijiao, Shunde, Foshan, China

**Test Standards** ..... 47 CFR Part 18

**Test Result**..... PASS

**Tested by** ..... Ruihong Xie  
Ruihong Xie Test Engineer 2022.04.28

**Reviewed by** ..... Chris You  
Chris You Senior Engineer 2022.04.28

**Approved by** ..... Shuangwen Zhang  
2022.04.28  
Shuangwen Zhang, Manager



## TABLE OF CONTENTS

|  |   |           |
|--|---|-----------|
| <b>1.</b>  | <b>GENERAL INFORMATION .....</b>          | <b>5</b>  |
| <b>1.1</b>   | <b>GENERAL DESCRIPTION OF EUT .....</b>   | <b>5</b>  |
| <b>1.2</b>   | <b>Test Standards and Results.....</b>    | <b>7</b>  |
| <b>1.3</b>   | <b>Facilities and Accreditations.....</b> | <b>8</b>  |
| 1.3.1  | Facilities .....                          | 8         |
| 1.3.2  | Test Environment Conditions.....          | 8         |
| 1.3.3  | Measurement Uncertainty .....             | 8         |
| <b>2.</b>  | <b>EQUIPMENTS LIST .....</b>              | <b>9</b>  |
| <b>3.</b>  | <b>EMC EMISSION TEST.....</b>             | <b>10</b> |
| <b>3.1</b>   | <b>Test Procedure.....</b>                | <b>10</b> |
| 3.1.1  | Frequency For Normal Voltage .....        | 10        |
| 3.1.2  | Frequency For Line Voltage.....           | 10        |
| 3.1.3  | Measurement data .....                    | 11        |
| <b>3.2</b>   | <b>RADIATION HAZARD TEST.....</b>         | <b>11</b> |
| 3.2.1  | Test Setup.....                           | 11        |
| 3.2.2  | Limit.....                                | 11        |
| 3.2.3  | Test results.....                         | 11        |
| <b>3.3</b>   | <b>RF OUTPUT POWER MEASUREMENT .....</b>  | <b>12</b> |
| 3.3.1  | Test Standard.....                        | 12        |
| 3.3.2  | EUT Operating mode .....                  | 12        |
| 3.3.3  | Test Data.....                            | 12        |
| <b>4.</b>  | <b>CONDUCTED EMISSION .....</b>           | <b>13</b> |
| 4.1.1  | Conducted Emission Limit.....             | 13        |
| 4.1.2  | Test Procedure.....                       | 13        |
| 4.1.3  | Test Setup.....                           | 13        |
| <b>5.</b>  | <b>RADIATED EMISSION .....</b>            | <b>16</b> |
| 5.1.1  | Radiated Emission Limits .....            | 16        |
| 5.1.2  | Test Setup.....                           | 16        |
| 5.1.3  | Test Procedure.....                       | 17        |
| <b>APPENDIX I: PHOTOGRAPHS OF EMC TEST CONFIGURATION .....</b> |   | <b>21</b> |



| Change History |            |                   |
|----------------|------------|-------------------|
| Issue          | Date       | Reason for change |
| 1.0            | 2022.04.28 | First edition     |
|                |            |                   |
|                |            |                   |



# 1. GENERAL INFORMATION

## 1.1 GENERAL DESCRIPTION OF EUT

|                                |  |
|--------------------------------|--|
| EUT Name .....                 | Microwave Oven   |
| Trade Name.....                | Midea, Panasonic   |
| Brand Name.....                | N/A  |
| Hardware Version.....          | N/A  |
| Software Version .....         | N/A  |
| Model.....                     | <p>TM034K##-P0H, TM034K***-P0H, TM034K##-P0, TM034K***-P0, NN-SG6### model designations as follows:</p> <p>T: Touch type keypad;<br/> M: Microwave function;<br/> 0: Indicates the microwave output power is 1000W;<br/> 34: Indicates cavity capacity is 34 liters;<br/> K: Indicates the design No.;</p> <p>## or ***: "#", "*" may be 0~9, A~Z or blank, indicates different appearance;</p> <p>-P(P0): Indicates Painted (Steel) Cavity, Stand for transduction function;<br/> H: with humidity.</p> <p>“NN-SG6###” for trade mark “Panasonic” which is identical to Midea model TM034K-series models, where first “#” is number from “1” to “9” which stands for different cosmetic model, the second “#” is A~Z or 0~9 which stands for production year, the third “#” is B or W or S or C, which stands for design color.</p> <p>Model of TM034K6LQ-P0H was selected for final testing.</p> |
| Power Supply .....             | 120V AC/60Hz   |
| Rated input Power(microwave):  | 1500W  |
| Rated output Power(microwave): | 1000W  |
| Frequency.....                 | 2450MHz (Class B/Group 2)  |
| Magnetron Model.....           | 2M319J   |
| Magnetron Manufacturer ... :   | WITOL  |
| Description of Support Units : | <p>-Load for power output measurement: 1000 milliliters of water in the beaker located in the center of the oven.</p> <p>-Load for frequency measurement: 1000 milliliters of water in the beaker located in the center of the oven.</p> <p>-Load for measurement of radiation on second and third</p>   |



harmonic: Two loads, one of 700 and the other of 300 milliliters, of water are used. Each load is tested both with the beaker located in the center of the oven and with it in the right front corner.

-Load for all other measurements: 700 milliliters of water, with the beaker located in the center of the oven.

*Note 1:* The EUT have the following typical setups during the test:

Setup1: Microwave heating mode (According to FCC PART 18);

*Note 2:* For a more detailed description, please refer to Specification or User's Manual supplied by the applicant and/or manufacturer.



## 1.2 Test Standards and Results

The objective of the report is to perform testing according to 47 CFR Part 18:

| No. | Identity       | Document Title          |
|-----|----------------|-------------------------|
| 1   | 47 CFR Part 18 | Radio Frequency Devices |

Test detailed items/section required by FCC rules and results are as below:

| Emission       |   |                  |        |
|----------------|---|------------------|--------|
| Standard       | Item                                      | Class / Severity | Result |
| 47 CFR PART 18 | Conducted Emission<br>(150 kHz to 30 MHz) | 18.307(b)        | PASS   |
|                | Radiated Emission<br>(30 MHz to 1 GHz)    | 18.305(b)        | PASS   |



### 1.3 Facilities and Accreditations

#### 1.3.1 Facilities

**CNAS-Lab Code: L1659**

CCIC-SET is a third party testing organization accredited by China National Accreditation Service for Conformity Assessment (CNAS) according to ISO/IEC 17025. The accreditation certificate number is L1659.

**FCC-Registration No.: CN1283**

CCIC Southern Testing Co., Ltd EMC Laboratory has been registered and fully described in a report filed with the FCC (Federal Communications Commission). The acceptance letter from the FCC is maintained in our files. Designation Number: CN1283, valid time is until April 19th, 2023.

**ISED Registration: 11185A-1**

CCIC Southern Testing Co., Ltd. EMC Laboratory has been registered by Certification and Engineering Bureau of Industry Canada for the performance of radiated measurements with Registration No. 11185A-1 on Aug. 04, 2016, valid time is until April 19th, 2023.

**A2LA Code: 5721.01**

CCIC-SET is a third party testing organization accredited by A2LA according to ISO/IEC 17025. The accreditation certificate number is 5721.01.

#### 1.3.2 Test Environment Conditions

During the measurement, the environmental conditions were within the listed ranges:

|                             |              |
|-----------------------------|--------------|
| Temperature (°C):           | 15°C- 35°C   |
| Relative Humidity (%):      | 25% -75%     |
| Atmospheric Pressure (kPa): | 86kPa-106kPa |

#### 1.3.3 Measurement Uncertainty

The uncertainty is calculated using the methods suggested in the "Guide to the Expression of Uncertainty in Measurement" (GUM) published by ISO.

|   |                   |
|---|-------------------|
| Uncertainty of Conducted Emission:            | Uc = 2.6 dB (k=2) |
| Uncertainty of Radiated Emission:(30MHz~1GHz) | Uc = 5.8 dB (k=2) |
| Uncertainty of Radiated Emission:(1~18GHz)    | Uc = 5.1 dB (k=2) |





## 2. EQUIPMENTS LIST

### A. Equipment List:

| Description         | Manufacturer      | Model                     | Serial No. | Calibration Date | Calibration Due. Date |
|---------------------|-------------------|---------------------------|------------|------------------|-----------------------|
| Test Receiver       | KEYSIGHT          | ESR3                      | A181103297 | 2021.07.14       | 2022.06.24            |
| LISN                | ROHDE&SCHWARZ     | NSLK 8127                 | A210803670 | 2021.04.03       | 2022.08.10            |
| Shield Room         | Xinju Electronics | L9000*W4500*<br>H3100     | A181003230 | 2021.09.05       | 2024.07.29            |
| EMI Test Receiver   | ROHDE&SCHWARZ     | ESIB7                     | A0501375   | 2022.05.23       | 2023.04.17            |
| Broadband Ant.      | ETC               | MCTD2786                  | A150402240 | 2021.03.05       | 2024.03.03            |
| 3M Anechoic Chamber | Albatross         | SAC-3MAC<br>9*6*6m        | A0412375   | 2019.03.26       | 2023.03.25            |
| EMI Test Receiver   | ROHDE&SCHWARZ     | ESW26                     | A180502935 | 2021.08.12       | 2022.08.01            |
| 5M Anechoic Chamber | Albatross         | SAC-5MAC<br>12.8x6.8x6.4m | A0304210   | 2019.03.25       | 2023.03.24            |
| EMI Horn Ant.       | ETC               | 1209                      | A150402241 | 2021.01.02       | 2024.01.01            |
| Spectrum Analyzer   | ROHDE&SCHWARZ     | ESW26                     | A180502935 | 2021.08.12       | 2022.08.02            |



### 3. EMC EMISSION TEST

#### 3.1 Test Procedure

Test Requirement: 47 CFR PART 18

Test Method: FCC/OST MP-5:1986

Power Supply: AC 120V/ 60Hz

Frequency Range: 2441-2473MHz

Detector: Peak

Limit: ISM equipment may be operated at any frequency above 9KHz and the frequency band 2400-2500MHz is allocated for use by ISM equipment

| ISM frequency | Tolerance  |
|---------------|------------|
| 6.78 MHz      | ±15.0 kHz  |
| 13.56 MHz     | ±7.0 kHz   |
| 27.12 MHz     | ±163.0 kHz |
| 40.68 MHz     | ±20.0 kHz  |
| 915 MHz       | ±13.0 MHz  |
| 2,450 MHz     | ±50.0 MHz  |
| 5,800 MHz     | ±75.0 MHz  |
| 24,125 MHz    | ±125.0 MHz |
| 61.25 GHz     | ±250.0 MHz |
| 122.50 GHz    | ±500.0 MHz |
| 245.00 GHz    | ±1.0 GHz   |

#### 3.1.1 Frequency For Normal Voltage

The operating frequency was measured using a spectrum analyzer. Starting with the EUT at room temperature, a 1000 mL water load was placed in the center of the oven and the oven was operated at maximum output power. The fundamental operating frequency was monitored until the water load was reduced to 20 percent of the original load.

#### 3.1.2 Frequency For Line Voltage

The EUT was operated / warmed by at least 10 minutes of use with a 1000mL water load at room temperature at the beginning of the test. Then the operating frequency was monitored as the input voltage was varied between 80 and 125 percent of the nominal rating.



### 3.1.3 Measurement data

| Operating Mode | Frequency(MHz) |
|----------------|----------------|
| Normal Voltage | 2428.2-2457.7  |
| Line Voltage   | 2439.2-2475.2  |

## 3.2 RADIATION HAZARD TEST

### 3.2.1 Test Setup

The EUT was set-up according to the FCC MP-5 and FCC Part 18 for radiation Hazard measurement. The measurement was using a microwave leakage meter to measure the radiation leakage in the as-received condition with the oven door closed A 700mL water load in a breaker was located in the center of the oven and the microwave oven was set to maximum power. While the oven operating, the microwave meter will check the leakage and then record the maximum leakage.

### 3.2.2 Limit

A maximum of 1.0mW/cm<sup>2</sup> is allowed in according with the applicable FCC standards

### 3.2.3 Test results

There was no microwave leakage exceeding a power level of 0.44 m W/cm<sup>2</sup> Observed at any point 5cm or more from the external surface of the oven



### 3.3 RF OUTPUT POWER MEASUREMENT

#### 3.3.1 Test Standard

|                  |                   |
|------------------|-------------------|
| Test Requirement | 47 CFR PART 18    |
| Test Method      | FCC/OST MP-5:1986 |
| Power Supply     | AC120/60Hz        |

#### 3.3.2 EUT Operating mode

Test the EUT in microwave mode with full power.

#### 3.3.3 Test Data

| Mass of Water(g) | Mass of the container(g) | ambient temperature (°C) | Initial temperature(°C) | Final temperature(°C) | Heating Time(S) | Output Power(Watt) |
|------------------|--------------------------|--------------------------|-------------------------|-----------------------|-----------------|--------------------|
| 1000             | 280                      | 21.7                     | 9.1                     | 31.2                  | 120             | 793.45             |

Formula:

$$P = \frac{4.2 \times m_w(T_2 - T_1) + 0.9 \times m_c(T_2 - T_0)}{t}$$

P is the microwave power output, in watts

M<sub>w</sub> is the mass of the water, in grams

M<sub>c</sub> is the mass of the container, in grams

T<sub>0</sub> is the ambient temperature, in degrees Celsius

T<sub>1</sub> is Initial temperature of the water, in degrees Celsius

T<sub>2</sub> is final temperature of the water, in degrees Celsius

T is heating time, in seconds, excluding the magnetron filament heating-up time

## 4. CONDUCTED EMISSION

### 4.1.1 Conducted Emission Limit

| Frequency range (MHz) | Conducted Limit (dB $\mu$ V) |          |
|-----------------------|------------------------------|----------|
|                       | Quasi-peak                   | Average  |
| 0.15 - 0.50           | 66 to 56                     | 56 to 46 |
| 0.50 - 5              | 56                           | 46       |
| 5 - 30                | 60                           | 50       |

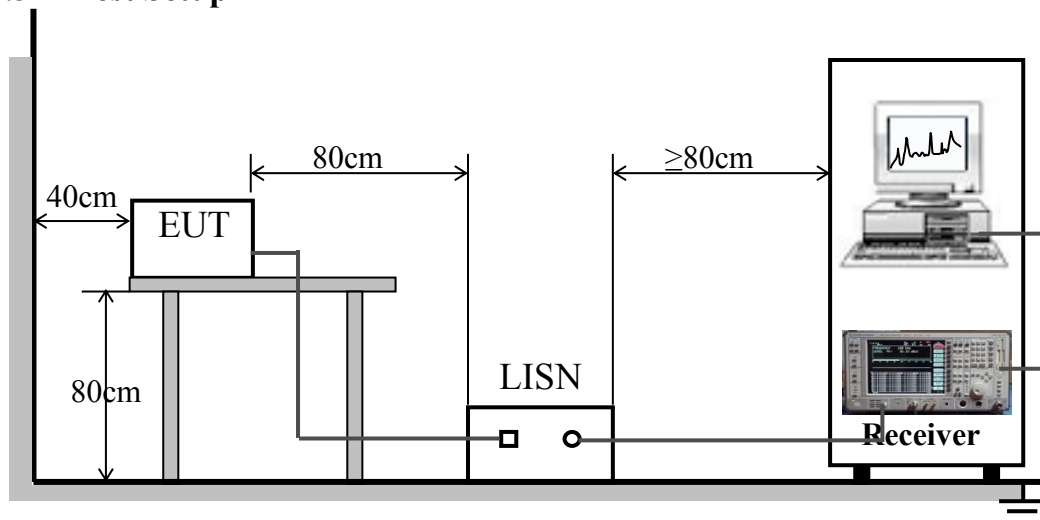
**Note:**

- The limit decreases linearly with the logarithm of the frequency in the range 0.05 MHz to 0.5 MHz.
- The lower limit is applicable at the transition frequency.

### 4.1.2 Test Procedure

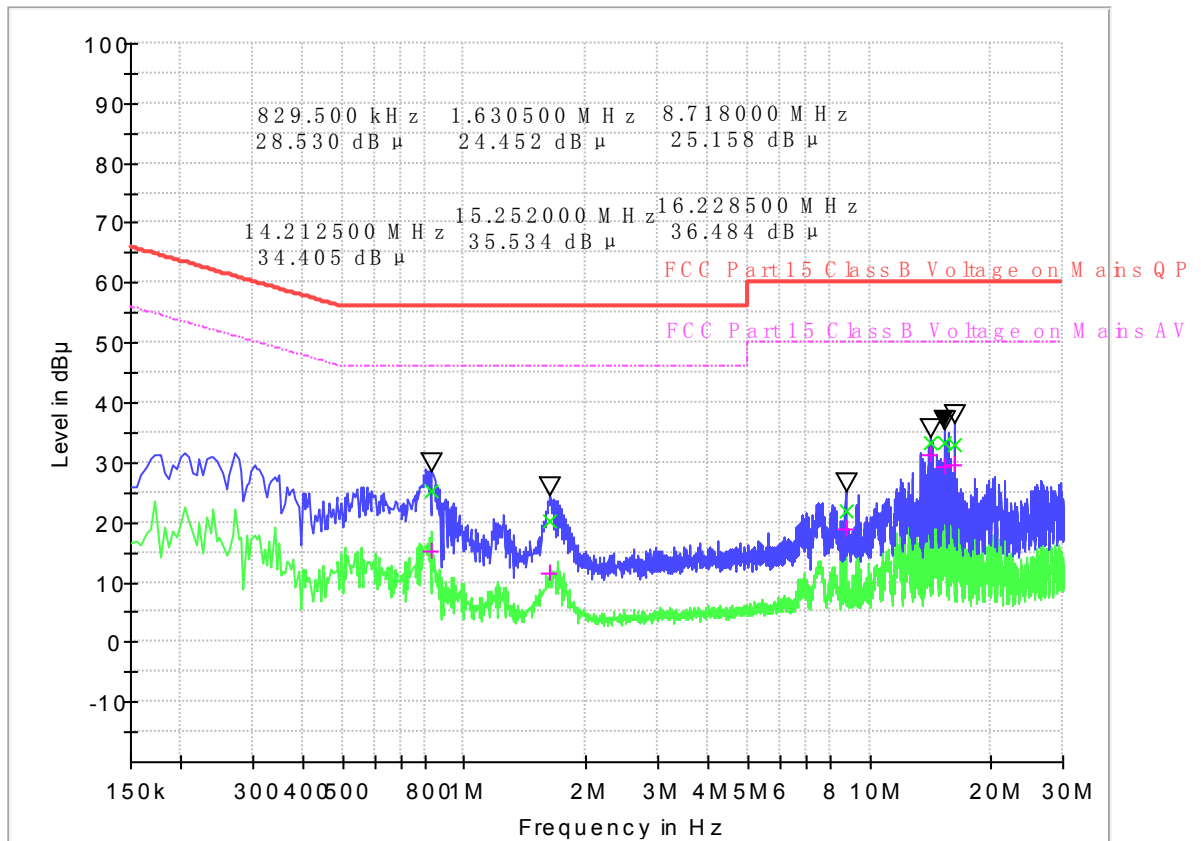
The EUT is placed on a 0.8m high insulating table, which stands on the grounded conducting floor, and keeps 0.4m away from the grounded conducting wall. The EUT is connected to the power mains through a LISN which provides 50 $\Omega$ /50 $\mu$ H of coupling impedance for the measuring instrument. The Common Antenna is used for the call between the EUT and the System Simulator (SS). A Pulse Limiter is used to protect the measuring instrument. The factors of the whole test system are calibrated to correct the reading.

### 4.1.3 Test Setup



**A. Test Result:**

Mains terminal disturbance voltage, Setup1,L phase

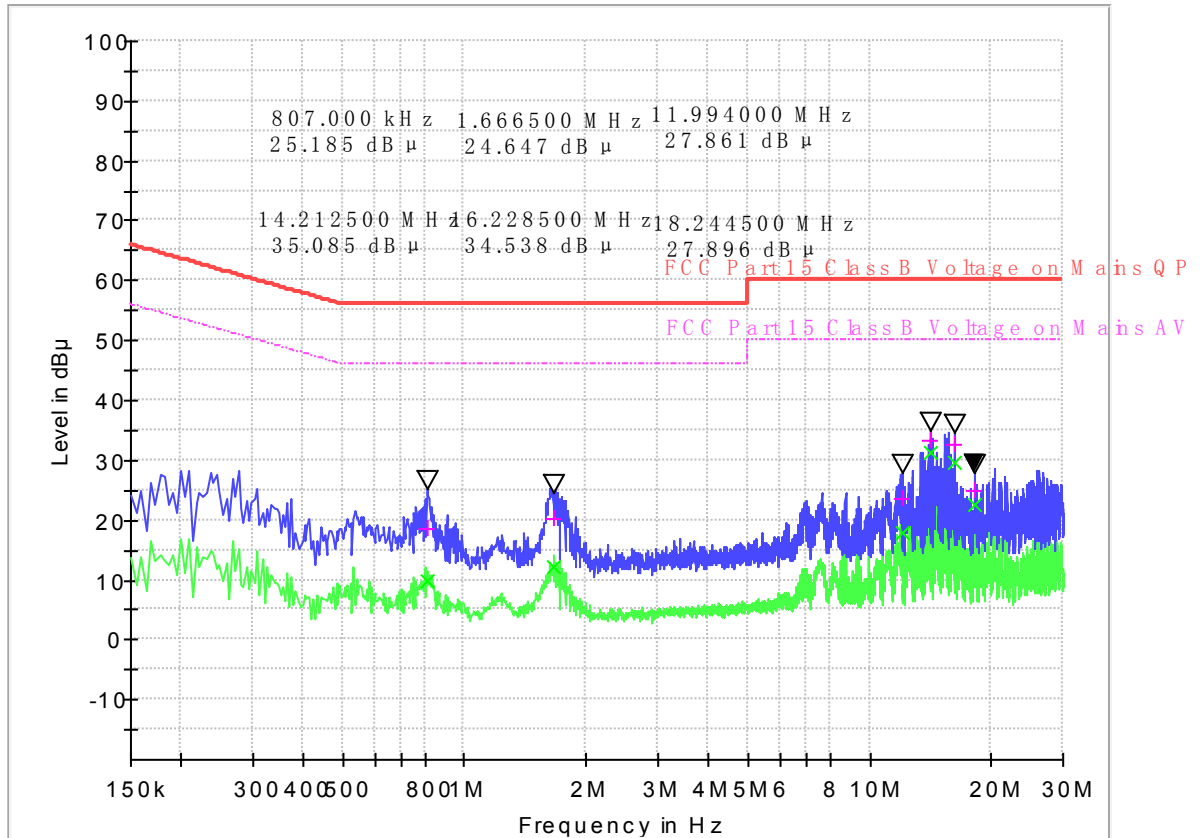


(Plot A: L Phase)

| Frequency (MHz) | QuasiPeak (dB µ V) | CAverage (dB µ V) | Cabel Loss (dB) | Corr. (dB) | Margin - QPK | Limit - QPK | Margin - AV | Limit - AV (dB µ V) |
|-----------------|--------------------|-------------------|-----------------|------------|--------------|-------------|-------------|---------------------|
| 0.829500        | 25.15              | 15.14             | 0.1             | 10.2       | 30.85        | 56.0        | 30.86       | 10.2                |
| 1.630500        | 20.24              | 11.44             | 0.2             | 10.2       | 35.76        | 56.0        | 34.56       | 10.2                |
| 8.718000        | 21.95              | 18.78             | 0.3             | 10.5       | 38.05        | 60.0        | 31.22       | 10.5                |
| 14.21250        | 33.22              | 31.38             | 0.4             | 10.9       | 26.78        | 60.0        | 18.62       | 10.9                |
| 15.25200        | 33.35              | 29.13             | 0.4             | 10.9       | 26.65        | 60.0        | 20.87       | 10.9                |
| 16.22850        | 32.92              | 29.73             | 0.5             | 11.0       | 27.08        | 60.0        | 20.27       | 11.0                |



Mains terminal disturbance voltage, Setup 1, N phase



(Plot B: N Phase)

| Frequency (MHz) | QuasiPeak (dB µV) | CAverage (dB µV) | Cabel Loss (dB) | Corr. (dB) | Margin - QPK | Limit - QPK | Margin - AV | Limit - AV (dB µV) |
|-----------------|-------------------|------------------|-----------------|------------|--------------|-------------|-------------|--------------------|
| 0.807000        | 18.53             | 9.80             | 0.2             | 10.2       | 37.47        | 56.0        | 36.20       | 46.0               |
| 1.666500        | 20.26             | 12.19            | 0.1             | 10.2       | 35.74        | 56.0        | 33.81       | 46.0               |
| 11.99400        | 23.50             | 17.86            | 0.4             | 10.7       | 36.50        | 60.0        | 32.14       | 50.0               |
| 14.21250        | 33.32             | 31.45            | 0.3             | 10.9       | 26.68        | 60.0        | 18.55       | 50.0               |
| 16.22850        | 32.62             | 29.47            | 0.4             | 11.0       | 27.38        | 60.0        | 20.53       | 50.0               |
| 18.24450        | 24.91             | 22.58            | 0.4             | 11.1       | 35.09        | 60.0        | 27.42       | 50.0               |

**Test Result: PASS**

## 5. RADIATED EMISSION

### 5.1.1 Radiated Emission Limits

- (a) ISM equipment operation on a frequency specified in §18.301 is permitted unlimited radiated energy in the band specified for that frequency.
- (b) The field strength levels of emissions which lie outside the bands specified in §18.301, unless otherwise indicated, shall not exceed the following:

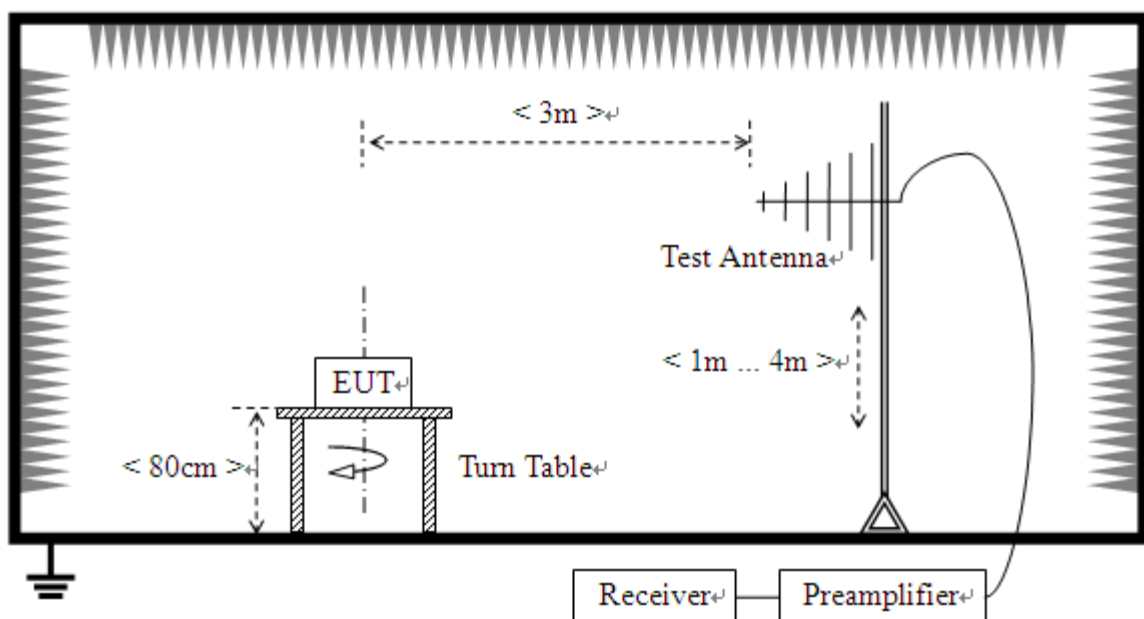
| RF Power generated by equipment(watts) | Field strength limit(uV/m) @300m     |
|--|--------------------------------------|
| Below 500                              | 25                                   |
| 500or more                             | $25 * \text{SQRT}(\text{power}/500)$ |

Power =793.45W

Limit= $20\lg(25 * \text{SQRT}(\text{power}/500)) + 20\lg(300/3)$  @ 3m distance.

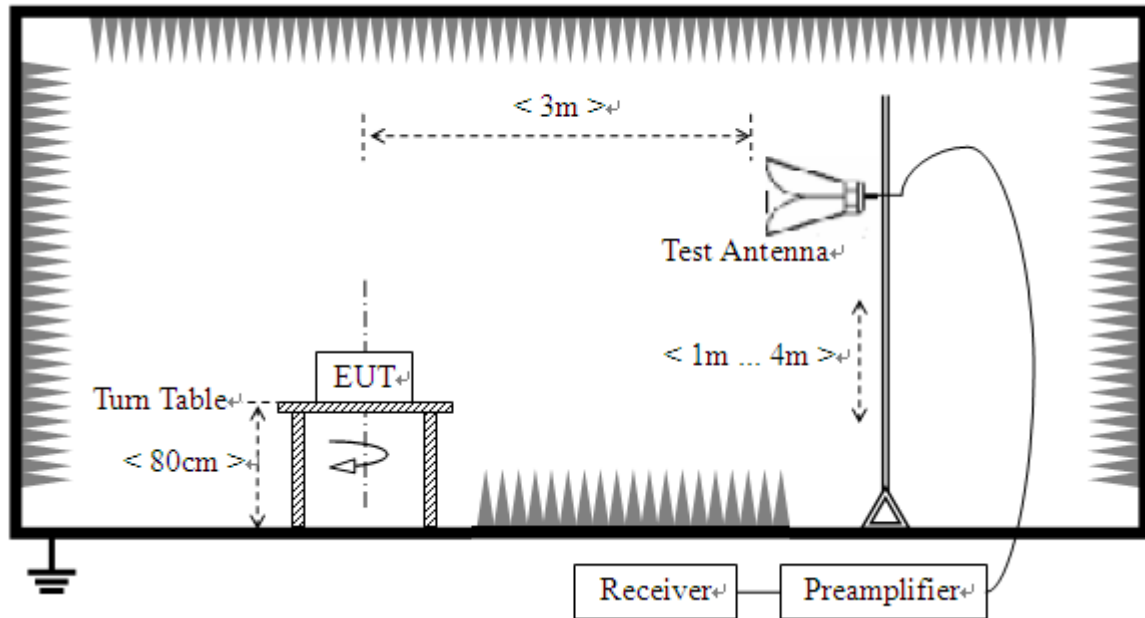
### 5.1.2 Test Setup

For radiated emissions from 30MHz to1GHz





For radiated emissions above 1GHz



### 5.1.3 Test Procedure

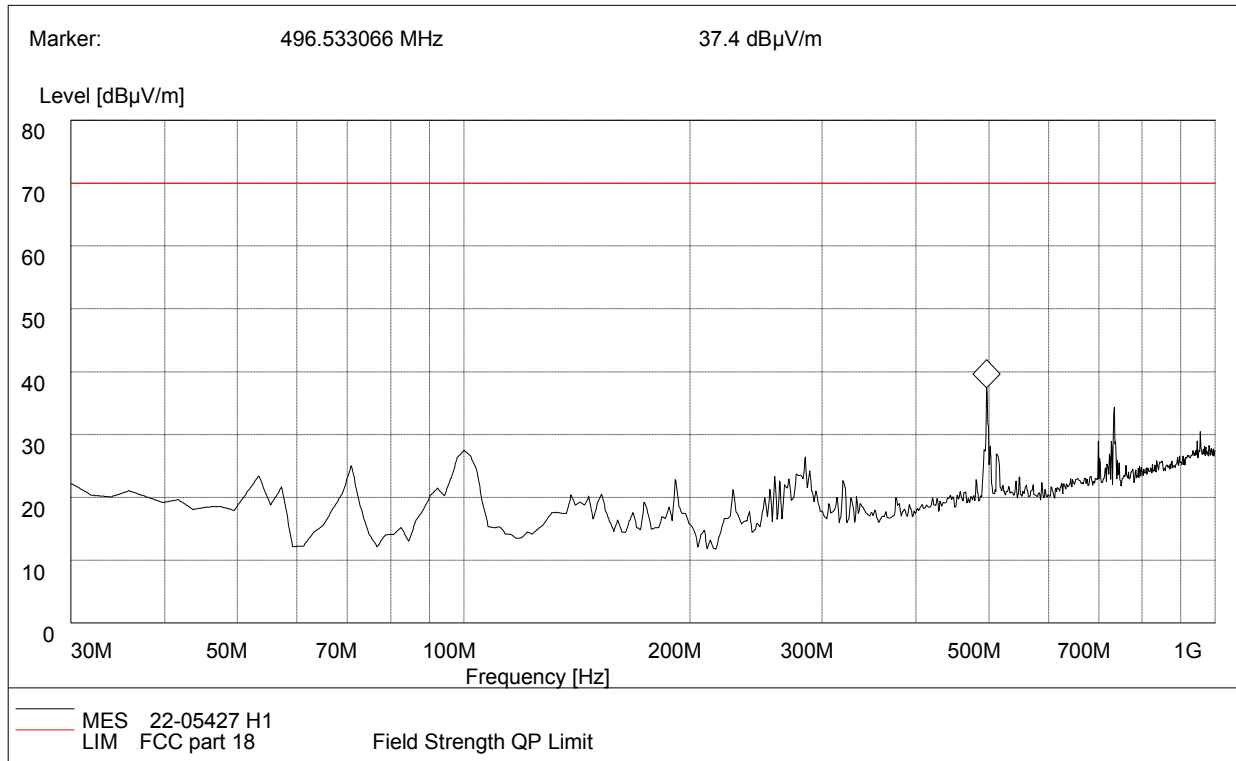
- a. The measuring distance of at 3 m shall be used for measurements at frequency up to 1GHz. For frequencies above 1GHz, any suitable measuring distance may be used.
- b. The EUT was placed on the top of a rotating table 0.8 meters above the ground at a 3 meter open area test site. The table was rotated 360 degrees to determine the position of the highest radiation.
- c. The height of the equipment or of the substitution antenna shall be 0.8 m; the height of the test antenna shall vary between 1 m to 4 m. Both horizontal and vertical polarizations of the antenna are set to make the measurement
- d. The initial step in collecting conducted emission data is a spectrum analyzer peak detector mode pre-scanning the measurement frequency range. Significant peaks are then marked and then Quasi Peak detector mode re-measured.
- e. If the Peak Mode measured value compliance with and lower than Quasi Peak Mode Limit, the EUT shall be deemed to meet QP Limits and then no additional QP Mode measurement performed.
- f. For the actual test configuration, please refer to the related Item –EUT Test Photos.

**Note:** Both horizontal and vertical antenna polarities were tested and performed pretest to three orthogonal axis. The worst case emissions were reported



Test Result:

Radiation disturbances, antenna polarization: Setup1, Horizontal

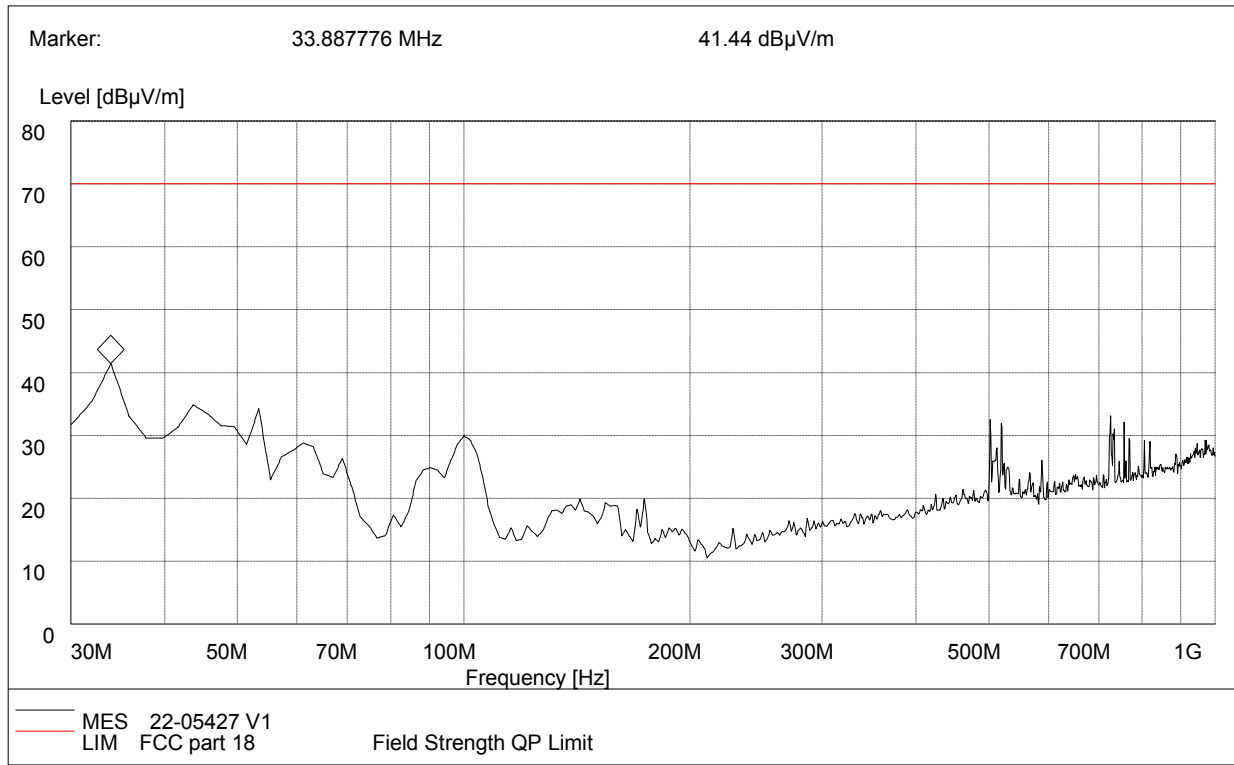


(Plot A: Test Antenna Vertical30M - 1G)

| Frequency (MHz) | QuasiPeak (dBµV/m) | Bandwidth (kHz) | Antenna height (cm) | Limit (dBµV/m) | Margin (dB) | Antenna    | Verdict |
|-----------------|--------------------|-----------------|---------------------|----------------|-------------|------------|---------|
| 53.32           | 20.25              | 120.000         | 100.0               | 69.96          | 49.71       | Horizontal | Pass    |
| 70.82           | 22.14              | 120.000         | 100.0               | 69.96          | 47.82       | Horizontal | Pass    |
| 99.97           | 25.33              | 120.000         | 100.0               | 69.96          | 44.63       | Horizontal | Pass    |
| 284.64          | 24.56              | 120.000         | 100.0               | 69.96          | 45.40       | Horizontal | Pass    |
| 496.53          | 35.58              | 120.000         | 100.0               | 69.96          | 34.38       | Horizontal | Pass    |
| 733.68          | 31.05              | 120.000         | 100.0               | 69.96          | 38.91       | Horizontal | Pass    |



Radiation disturbances, antenna polarization: Setup1,Vertical



(Plot B: Test Antenna Horizontal30M - 1G)

| Frequency (MHz) | QuasiPeak (dBµV/m) | Bandwidth (kHz) | Antenna height (cm) | Limit (dBµV/m) | Margin (dB) | Antenna  | Horizontal |
|-----------------|--------------------|-----------------|---------------------|----------------|-------------|----------|------------|
| 33.88           | 38.41              | 120.000         | 100.0               | 69.96          | 31.55       | Vertical | Pass       |
| 43.60           | 32.45              | 120.000         | 100.0               | 69.96          | 37.51       | Vertical | Pass       |
| 53.32           | 31.54              | 120.000         | 100.0               | 69.96          | 38.42       | Vertical | Pass       |
| 99.97           | 25.68              | 120.000         | 100.0               | 69.96          | 44.28       | Vertical | Pass       |
| 519.85          | 30.64              | 120.000         | 100.0               | 69.96          | 39.32       | Vertical | Pass       |
| 725.91          | 30.65              | 120.000         | 100.0               | 69.96          | 39.31       | Vertical | Pass       |

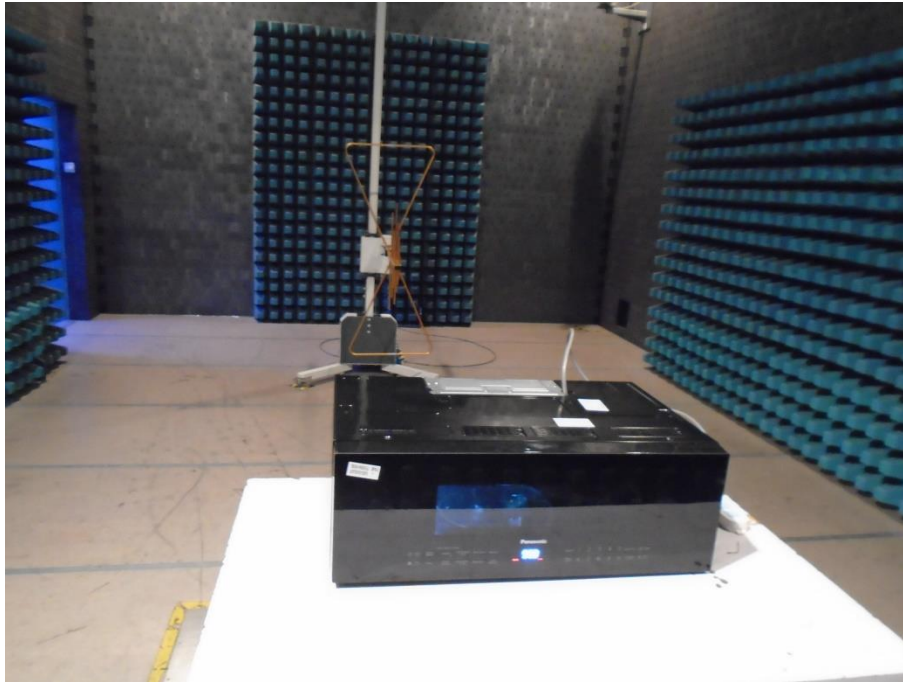
**Above 1GHzSetup1**

| NO. | Freq.<br>[MHz] | Level<br>[dB $\mu$ V/m] | Factor<br>[dB] | Limit<br>[dB $\mu$ V/m] | Margin<br>[dB] | Height<br>[cm] | Angle<br>[°] | Polarity   |
|-----|----------------|-------------------------|----------------|-------------------------|----------------|----------------|--------------|------------|
| 1   | 1208.30        | 43.42                   | -14.78         | 69.96                   | 26.54          | 100            | 141          | Horizontal |
| 2   | 2351.83        | 46.97                   | -10.17         | 69.96                   | 22.99          | 100            | 130          | Horizontal |
| 3   | 2776.94        | 53.16                   | -8.40          | 69.96                   | 16.80          | 100            | 142          | Horizontal |
| 4   | 4277.56        | 51.28                   | -1.81          | 69.96                   | 18.68          | 100            | 49           | Horizontal |
| 5   | 5778.19        | 51.38                   | 0.35           | 69.96                   | 18.58          | 100            | 93           | Horizontal |
| 6   | 8656.16        | 59.68                   | 3.91           | 69.96                   | 10.28          | 100            | 250          | Horizontal |

| NO. | Freq.<br>[MHz] | Level<br>[dB $\mu$ V/m] | Factor<br>[dB] | Limit<br>[dB $\mu$ V/m] | Margin<br>[dB] | Height<br>[cm] | Angle<br>[°] | Polarity   |
|-----|----------------|-------------------------|----------------|-------------------------|----------------|----------------|--------------|------------|
| 1   | 1204.05        | 37.46                   | -14.80         | 69.96                   | 31.95          | 100            | 237          | Horizontal |
| 2   | 2079.76        | 45.03                   | -11.02         | 69.96                   | 24.38          | 100            | 135          | Horizontal |
| 3   | 2462.36        | 57.99                   | -9.80          | 69.96                   | 11.42          | 100            | 28           | Horizontal |
| 4   | 2683.42        | 54.17                   | -8.62          | 69.96                   | 15.24          | 100            | 41           | Horizontal |
| 5   | 4290.32        | 48.59                   | -1.68          | 69.96                   | 20.82          | 100            | 58           | Horizontal |
| 6   | 9094.02        | 58.19                   | 4.36           | 69.96                   | 11.22          | 100            | 62           | Horizontal |

## APPENDIX I: PHOTOGRAPHS OF EMC TEST CONFIGURATION

### 1. Radiated Emission Measurement below 1GHz



### 2. Radiated Emission Measurement above 1GHz



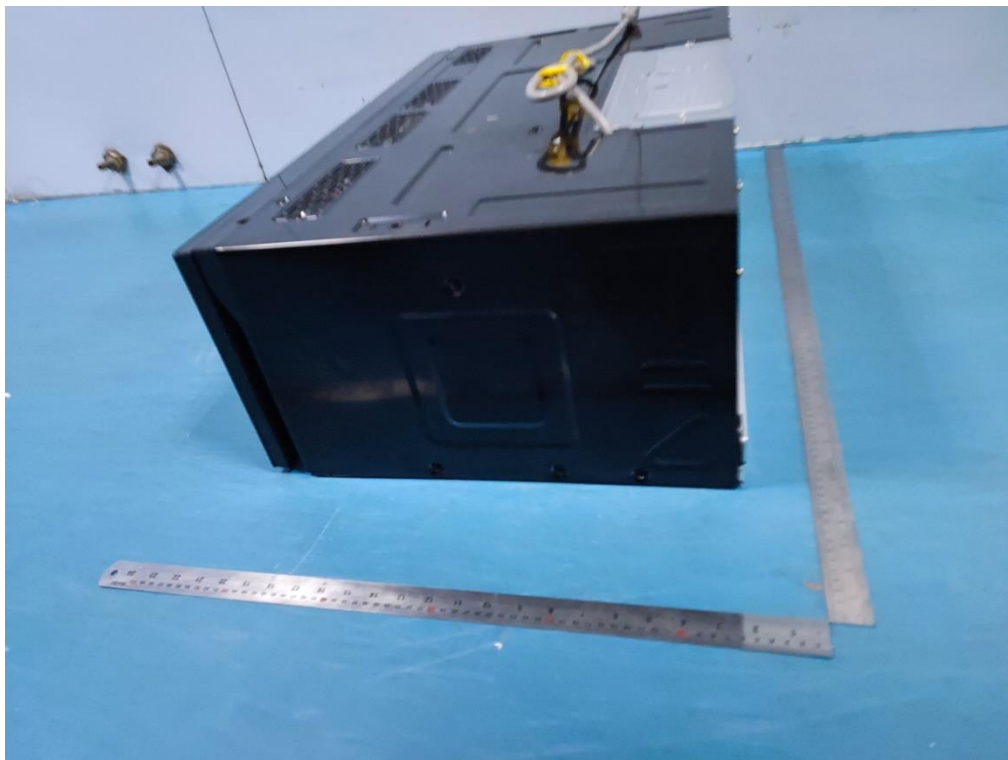
### 3. Conducted emission at AC mains input/output port Measurement



## APPENDIX II: PHOTOGRAPHS OF PRODUCT PHOTO

### External Photo

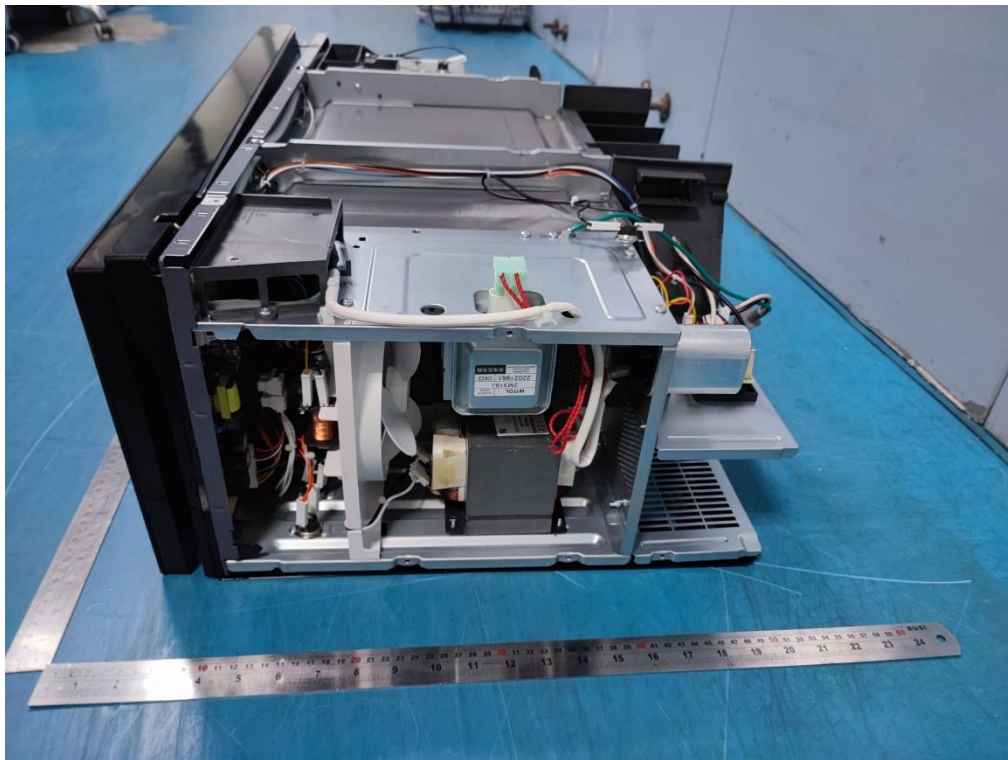


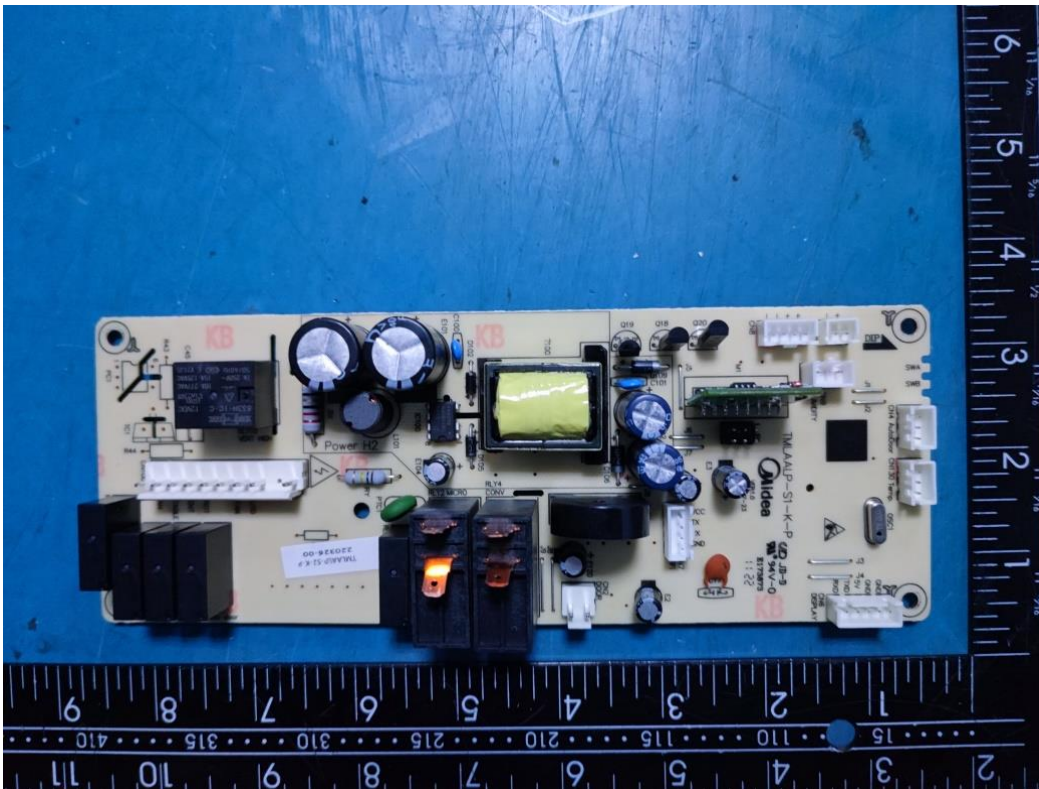
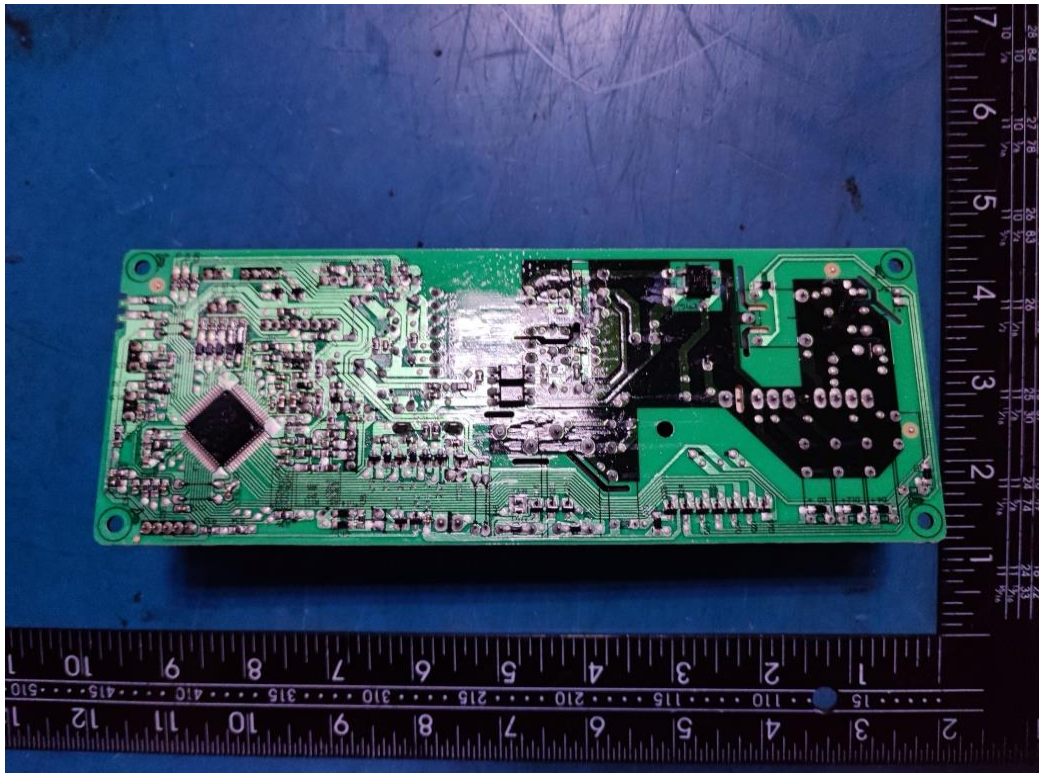


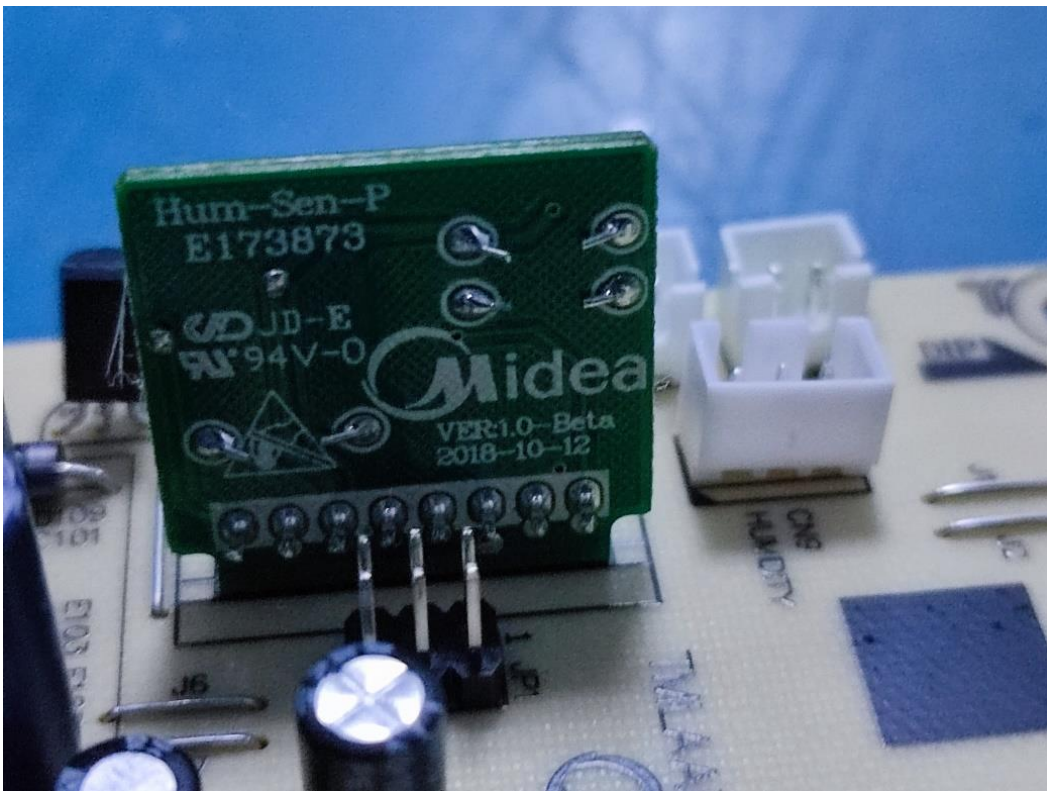
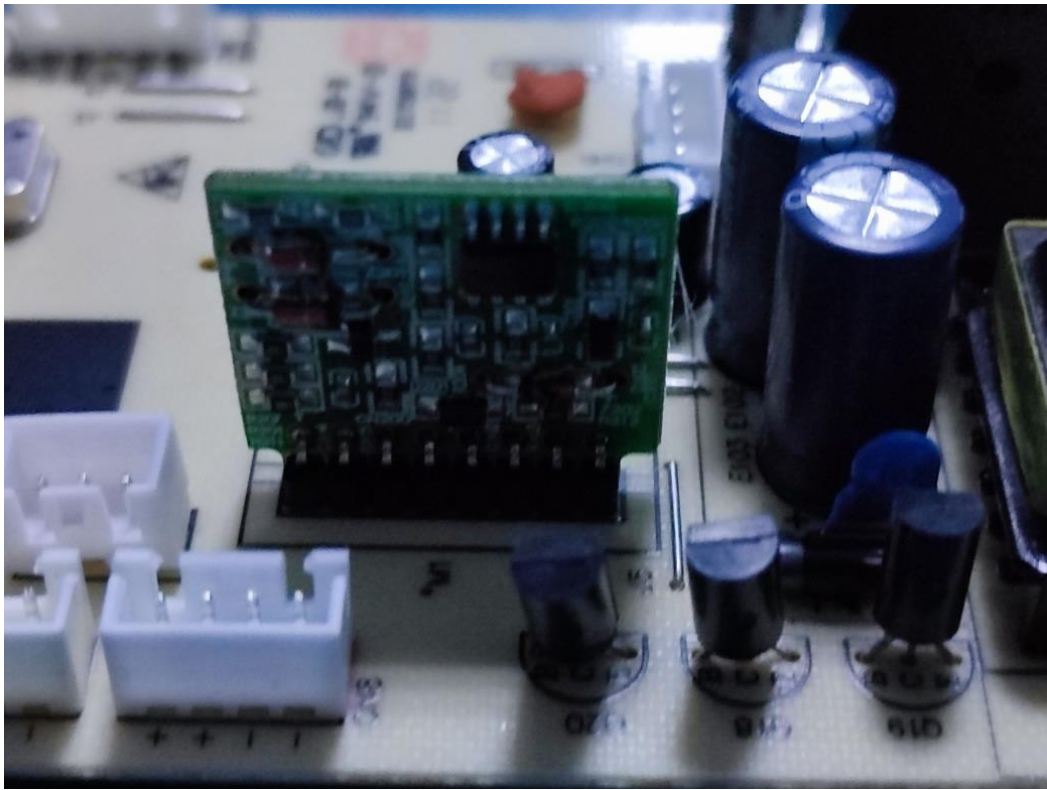




### Internal Photo









\*\*\* End of Report \*\*\*