



WiFi+BT Module IEEE 802.11a/b/g/n 1T/1R

Model Number: Midea_IOT10M_P1

Product Description

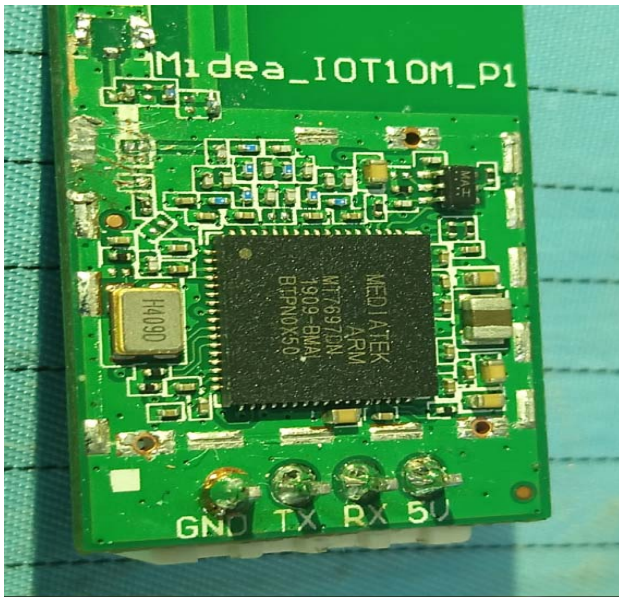
The Midea_IOT10M_P1 is a high-gain and low power consumption wifi module . It fully complies with IEEE 802.11a/b/g/n feature rich wireless connectivity at high standards, delivers reliable, cost-effective, throughput from an extended distance. When 5V, UART and GND were connected, This module is working. The Bluetooth part supports latest 4.2LE operation.

Product Specification

Product Features

- ◆ Complies with IEEE 802.11g; 802.11b; 802.11n ; 802.11a ; standard for 2.4GHz and 5GHz Wireless LAN.
- ◆ ONE Transmit and ONE Receive path(1T1R)
- ◆ Supports Ad-Hoc/Infrastructure modes
- ◆ Works with all existing network frastructure.
- ◆ Capable of up to 128-Bit WEP Encryption.
- ◆ Freedom to roam while staying connected.
- ◆ UP to 150Mbps High-Speed Transfer Rate in 802.11N mode of operation.
- ◆ Operating Systems: Linux
- ◆ Low power consumption.
- ◆ Complies with UART base specification revision 1.1 for WLAN
- ◆ Easy to install and configure.
- ◆ Bluetooth v4.2 Low Energy(LE);

Model	Midea_IOT10M_P1
Product Name	WiFi+BT Module
Standard	802.11a/b/g/n
Interface	WiFi: UART BT: UART
Data Transfer Rate	1,2,5,5.6,11,12,18,22,24,30,36,48,54,60,90 and maximum of 150Mbps
Modulation Method	QPSK,BPSK ,CCK(802.11b) QPSK,BPSK,16QAM ,64QAM with OFDM (802.11g) BPSK,QPSK,16QAM ,64QAM with OFDM (802.11n) QPSK,BPSK,16QAM ,64QAM with OFDM (802.11a) GFSK(BT)
Frequency Band	2.4GHz: CH 1~CH11 for FCC 5GHz: 5150~5250MHz, 5725~5850MHz
Transmit Power	< 20dBm
Operation Mode	Ad hoc, Infrastructure
Operation Range	Up to 150 meters in open space
OS Support	Linux
Security	WEP, TKIP, AES, WPA, WPA2
Operating Voltage	5V±10%
Operating Temperature	-30 ~ 85°C ambient temperature
Storage Temperature	-40 ~ 125°C ambient temperature
Humidity	5 to 95 % maximum (non-condensing)



Pin Definitions

Pin Name	Functional Description
GND	GND
TX	UART-TX, receive end in UART download
RX	UART-RX, transmit end in UART download, floating or pull up
5V	5V power supply

NOTICE:

- ◆ please keep this product and accessories attached to the places which children can't touch;
- ◆ do not splash water or other liquid onto this product, otherwise it may cause damage;
- ◆ do not put this product near the heat source or direct sunlight, otherwise it may cause deformation or malfunction;
- ◆ please keep this product away from flammable or naked flame;
- ◆ please do not repair this product by yourself. Only qualified personnel can be repaired.
- ◆ 5G WIFI 5150-5250MHz shall be indoor use only.

FCC Statement

This equipment has been tested and found to comply with the limits for a Class B digital device, pursuant to part 15 of the FCC rules. These limits are designed to provide reasonable protection against harmful interference in a residential installation. This equipment generates, uses and can radiate radio frequency energy and, if not installed and used in accordance with the instructions, may cause harmful interference to radio communications. However, there is no guarantee that interference will not occur in a particular installation. If this equipment does cause harmful interference to radio or television reception, which can be determined by turning the equipment off and on, the user is encouraged to try to correct the interference by one or more of the following measures:



PRODUCTS USERMANUAL

Midea IOT10M P1

- Reorient or relocate the receiving antenna.
- Increase the separation between the equipment and receiver.
- Connect the equipment into an outlet on a circuit different from that to which the receiver is connected.
- Consult the dealer or an experienced radio/TV technician for help.

This equipment complies with Part 15 of the FCC Rules. Operation is subject to the following two conditions:

- (1) This device may not cause harmful interference, and
- (2) This device must accept any interference received, including interference that may cause undesired operation.

Any changes or modifications not expressly approved by the party responsible for compliance could void the user's authority to operate the equipment.

Please notice that if the FCC identification number is not visible when the module is installed inside another device, then the outside of the device into which the module is installed must also display a label referring to the enclosed module. This exterior label can use wording such as the following: "Contains FCC ID: VG8IOT10MP1" any similar wording that expresses the same meaning may be used.

This equipment complies with FCC radiation exposure limits set forth for an uncontrolled environment. This transmitter must not be co-located or operating in conjunction with any other antenna or transmitter and must be installed to provide a separation distance of at least 20cm from all persons.

The module is limited to OEM installation ONLY.

The OEM integrator is responsible for ensuring that the end-user has no manual instruction to remove or install module.

The module is limited to installation in mobile application.

A separate approval is required for all other operating configurations, including portable configurations with respect to Part 2.1093 and difference antenna configurations.

There is requirement that the grantee provide guidance to the host manufacturer for compliance with Part 15B requirements.

The module complies with FCC Part 15.247 / Part 15.407 and apply for Single module approval.

Trace antenna designs: Not applicable.

Antennas:

2.4G	5G
PCB antenna & 3 dBi	PCB antenna & 3 dBi

The antenna is permanently attached, can't be replaced.



Canada Statement

This device complies with Industry Canada's licence-exempt RSSs. Operation is subject to the following two conditions:

- (1) This device may not cause interference; and
- (2) This device must accept any interference, including interference that may cause undesired operation of the device.

Le présent appareil est conforme aux CNR d'Industrie Canada applicables aux appareils radio exempts de licence. L'exploitation est autorisée aux deux conditions suivantes :

- (1) l'appareil ne doit pas produire de brouillage;
- (2) l'utilisateur de l'appareil doit accepter tout brouillage radioélectrique subi, même si le brouillage est susceptible d'en compromettre le fonctionnement.

This equipment complies with FCC radiation exposure limits set forth for an uncontrolled environment. This transmitter must not be co-located or operating in conjunction with any other antenna or transmitter and must be installed to provide a separation distance of at least 20cm from all persons.

Ce matériel est conforme aux limites d'exposition aux rayonnements rf énoncées dans un autre environnement. Cet émetteur ne doit pas être situé ou opérant conjointement avec toute autre antenne ou l'émetteur. Ce matériel devrait être installé et adapté à une distance minimale de 20cm entre le radiateur et votre corps.

Please notice that if the ISED certification number is not visible when the module is installed inside another device, then the outside of the device into which the module is installed must also display a label referring to the enclosed module. This exterior label can use wording such as the following: "Contains IC: 21015-IOT10MP1" any similar wording that expresses the same meaning may be used.

l'appareil hôte doit porter une étiquette donnant le numéro de certification du module d'Industrie Canada, précédé des mots « Contient un module d'émission », du mot « IC:12290A-WCT5L » ou d'une formulation similaire exprimant le même sens, comme suit

The device for operation in the band 5150-5250 MHz is only for indoor use to reduce the potential for harmful interference to co-channel mobile satellite systems.

Les dispositifs fonctionnant dans la bande 5150-5250 MHz sont réservés uniquement pour une utilisation à l'intérieur afin de réduire les risques de brouillage préjudiciable aux systèmes de satellites mobiles utilisant les mêmes canaux.