



*Request for Class II Permissive Change(C2PC)*

**FCC ID: VG8EM159KYY**

**Data: 2017-6-30**

**TO: Federal Communication Commission**

Please be notified that we, the undersigned, **Guangdong Midea Kitchen Appliances Manufacturing Co.,Ltd.** declare that the reasons for this class II permissive change are as below:

1. Mother -board Changed as below. They have the same input&output power and similar circuit function

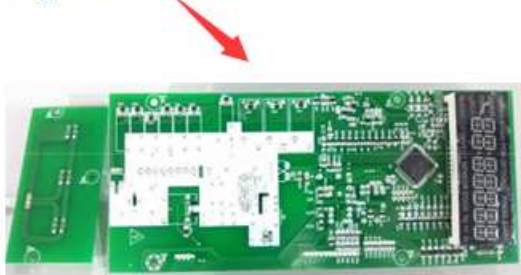
Original Mother board-top view



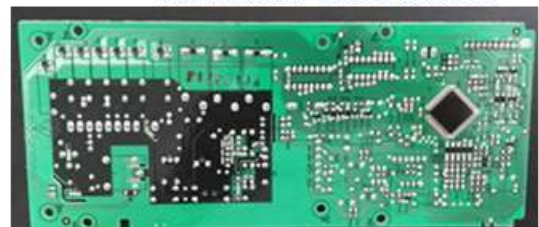
New Mother board –top view



Original Mother board -bottom



New Mother board -bottom



Note : Only differences for component and PCB Layout.

2. key board changed as below, they have the same input&output specification and power.

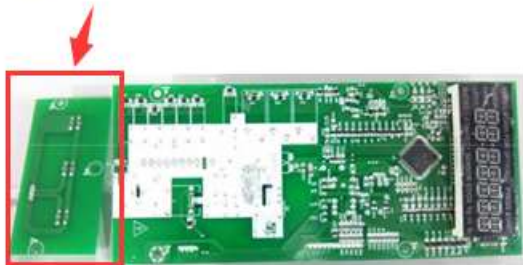
original key board top view



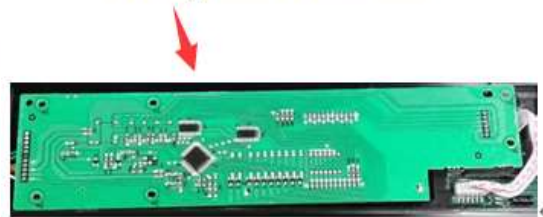
New key board top view



original key board bottom view



NEW key board bottom view



3. Changed Key board's type and location as below(see 1), New key board's input&output is identical and electrically compatible to original.



4. Back basically is the same(see below).



Old product:



New product

5. Anything else is the same as before.

Sincerely,



xue wenfei

Guangdong Midea Kitchen Appliances Manufacturing Co.,Ltd.

Phone : +86-757-26306480

FAX :+86-757-26656995

E-Mail: xuewf1@midea.com.cn