



FCC PART18 TEST REPORT

Report No.: SET2022-11498
Product Name: Microwave Oven
Trade Name: Midea, INSIGNIA
Model No.: XM044KYY, XM044KYYY, XM044KYY-P3, XM044KYYY-P3,
EM044K##-P3, EM044K***-P3, NS-OTRB16SS3
FCC ID: VG8EM044KYY
Applicant: Guangdong Midea Kitchen Appliances Manufacturing Co., Ltd.
Received Date: 2022.08.12
Test Data: 2022.08.12-2022.08.18
Issued by: CCIC Southern Testing Co., Ltd.
Lab Location: Electronic Testing Building, No.43 Shahe Road, Xili Street, Nanshan District, Shenzhen, Guangdong, China
Tel: 86 755 26627338 **Fax:** 86 755 26627238

This test report consists of **22** pages in total. It may be duplicated completely for legal use with the approval of the applicant. It should not be reproduced except in full, without the written approval of our laboratory. The client should not use it to claim product endorsement by CCIC-SET. The test results in the report only apply to the tested sample. The test report shall be invalid without all the signatures of testing engineers, reviewer and approver. Any objections must be raised to CCIC-SET within 15 days since the date when the report is received. It will not be taken into consideration beyond this limit.



Test Report

Product Name Microwave Oven

Model No. XM044KYY, XM044KYYY, XM044KYY-P3, XM044KYYY-P3,
EM044K##-P3, EM044K***-P3, NS-OTRB16SS3

Trade name Midea, INSIGNIA

Applicant..... Guangdong Midea Kitchen Appliances Manufacturing Co., Ltd.

Applicant Address..... No.6, Yong An Road, Beijiao, Shunde, Foshan, China

Manufacturer Guangdong Midea Kitchen Appliances Manufacturing Co., Ltd.

Manufacturer Address No.6, Yong An Road, Beijiao, Shunde, Foshan, China

Test Standards 47 CFR Part 18

Test Result PASS

Tested by Ruihong Xie
Ruihong Xie Test Engineer 2022.08.18

Reviewed by Chris You
Chris You Senior Engineer 2022.08.18

Approved by Shuangwen Zhang
2022.08.18
Shuangwen Zhang, Manager



TABLE OF CONTENTS

1.	GENERAL INFORMATION.....	5
1.1	GENERAL DESCRIPTION OF EUT	5
1.2	Test Standards and Results.....	7
1.3	Facilities and Accreditations.....	8
1.3.1	Facilities	8
1.3.2	Test Environment Conditions	8
1.3.3	Measurement Uncertainty	8
2.	EQUIPMENTS LIST	9
3.	EMC EMISSION TEST.....	10
3.1	Test Procedure	10
3.1.1	Frequency For Normal Voltage	10
3.1.2	Frequency For Line Voltage.....	10
3.1.3	Measurement data.....	11
3.2	RADIATION HAZARD TEST	11
3.2.1	Test Setup.....	11
3.2.2	Limit	11
3.2.3	Test results	11
3.3	RF OUTPUT POWER MEASUREMENT	12
3.3.1	Test Standard.....	12
3.3.2	EUT Operating mode	12
3.3.3	Test Data	12
4.	CONDUCTED EMISSION	13
4.1.1	Conducted Emission Limit	13
4.1.2	Test Procedure	13
4.1.3	Test Setup.....	13
5.	RADIATED EMISSION	16
5.1.1	Radiated Emission Limits	16
5.1.2	Test Setup.....	16
5.1.3	Test Procedure	17
APPENDIX I: PHOTOGRAPHS OF EMC TEST CONFIGURATION		21



Change History		
Issue	Date	Reason for change
1.0	2022.08.18	First edition



1. GENERAL INFORMATION

1.1 GENERAL DESCRIPTION OF EUT

EUT Name : Microwave Oven
 Trade Name..... : Midea, INSIGNIA
 Model..... : XM044KYY, XM044KYYY, XM044KYY-P3, XM044KYYY-P3, EM044K##-P3, EM044K***-P3, NS-OTRB16SS3 model designations as follow:
 X=E or A, on behalf of controller type;
 M: indicates microwave function;
 044: "0" indicates the microwave output power is 1000W, "44" indicates cavity capacity is 44 liters;
 K: indicates the design No.;
 YYY or YY, ## or ***: "Y", "#", "*" may be 0~9, A~Z or blank, indicates different appearance;
 -P3: Indicates Painted (Steel) Cavity; The third change to the product is to remove the Hood Fan Thermostat.
 Customer model "NS-OTRB16SS3" for trade mark as "INSIGNIA".
 Model of EM044K6BC-P3 was selected for final testing.

Power Supply : 120V AC/60Hz
 Rated input Power(microwave): 1500W
 Rated output Power(microwave): 1000W
 Frequency : 2450MHz (Class B/Group 2)
 Magnetron Model..... : WITOL
 Magnetron Manufacturer : 2M319J
 Description of Support Units :
 -Load for power output measurement: 1000 milliliters of water in the beaker located in the center of the oven.
 -Load for frequency measurement: 1000 milliliters of water in the beaker located in the center of the oven.
 -Load for measurement of radiation on second and third harmonic: Two loads, one of 700 and the other of 300 milliliters, of water are used. Each load is tested both with the beaker located in the center of the oven and with it in the right front corner.
 -Load for all other measurements: 700 milliliters of water, with the beaker located in the center of the oven.

Note 1: The EUT have the following typical setups during the test:

Setup1: Microwave heating mode (According to FCC PART 18);

Note 2: For a more detailed description, please refer to Specification or User's Manual supplied by the applicant and/or manufacturer.

Note 3: This is an updated report based the original report #: "SET2021-09164" and which re-tested on August 12th, 2022 to August 18th, 2022. Differences between two reports as below:

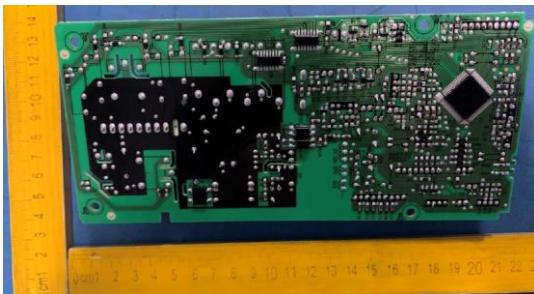
Original Mother board-top view



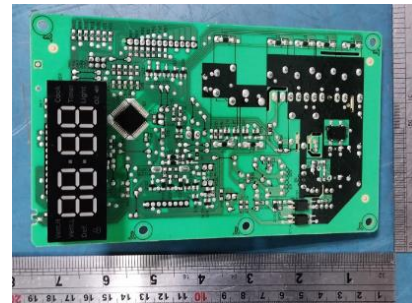
New Mother board -top view



Original Mother board -bottom



New Mother board -bottom



Note: They have the same of input& output rating and circuit function except for PCB layout and some electronic components differences.



1.2 Test Standards and Results

The objective of the report is to perform testing according to 47 CFR Part 18:

No.	Identity	Document Title
1	47 CFR Part 18	Radio Frequency Devices

Test detailed items/section required by FCC rules and results are as below:

Emission			
Standard	Item	Class / Severity	Result
47 CFR PART 18	Conducted Emission (150 kHz to 30 MHz)	18.307(b)	PASS
	Radiated Emission (30 MHz to 1 GHz)	18.305(b)	PASS



1.3 Facilities and Accreditations

1.3.1 Facilities

CNAS-Lab Code: L1659

CCIC-SET is a third-party testing organization accredited by China National Accreditation Service for Conformity Assessment (CNAS) according to ISO/IEC 17025. The accreditation certificate number is L1659.

FCC-Registration No.: CN1283

CCIC Southern Testing Co., Ltd EMC Laboratory has been registered and fully described in a report filed with the FCC (Federal Communications Commission). The acceptance letter from the FCC is maintained in our files. Designation Number: CN1283, valid time is until April 19th, 2023.

ISED Registration: 11185A-1

CCIC Southern Testing Co., Ltd. EMC Laboratory has been registered by Certification and Engineering Bureau of Industry Canada for the performance of radiated measurements with Registration No. 11185A-1 on Aug. 04, 2016, valid time is until April 19th, 2023.

A2LA Code: 5721.01

CCIC-SET is a third-party testing organization accredited by A2LA according to ISO/IEC 17025. The accreditation certificate number is 5721.01.

1.3.2 Test Environment Conditions

During the measurement, the environmental conditions were within the listed ranges:

Temperature (°C):	15°C- 35°C
Relative Humidity (%):	25% -75%
Atmospheric Pressure (kPa):	86kPa-106kPa

1.3.3 Measurement Uncertainty

The uncertainty is calculated using the methods suggested in the "Guide to the Expression of Uncertainty in Measurement" (GUM) published by ISO.

Uncertainty of Conducted Emission:	Uc = 3.2 dB (k=2)
Uncertainty of Radiated Emission:(30MHz~1GHz)	Uc = 5.8 dB (k=2)
Uncertainty of Radiated Emission:(1~18GHz)	Uc = 5.1 dB (k=2)



2. EQUIPMENTS LIST

A. Equipment List:

Description	Manufacturer	Model	Serial No.	Calibration Date	Calibration Due. Date
Test Receiver	KEYSIGHT	ESR3	A181103297	2022.06.24	2023.05.19
LISN	SCHWARZBECK	ESH2-Z5	A0304221	2022.04.02	2023.03.18
Shield Room	Xinju Electronics	L9000*W4500* H3100	A181003230	2021.09.05	2024.07.29
EMI Test Receiver	ROHDE&SCHWARZ	ESIB7	A0501375	2022.05.23	2023.04.17
Broadband Ant.	ETC	MCTD2786	A150402240	2021.03.05	2024.03.03
3M Anechoic Chamber	Albatross	SAC-3MAC 9*6*6m	A0412375	2019.03.26	2023.03.25
EMI Test Receiver	ROHDE&SCHWARZ	ESW26	A180502935	2022.08.01	2023.07.19
5M Anechoic Chamber	Albatross	SAC-5MAC 12.8x6.8x6.4m	A0304210	2021.03.03	2023.03.24
EMI Horn Ant.	ETC	1209	A150402241	2021.01.02	2024.01.01
Spectrum Analyzer	ROHDE&SCHWARZ	ESW26	A180502935	2022.08.02	2023.07.20



3. EMC EMISSION TEST

3.1 Test Procedure

Test Requirement: 47 CFR PART 18

Test Method: FCC/OST MP-5:1986

Power Supply: AC 120V/ 60Hz

Frequency Range: 2400-2500MHz

Detector: Peak

Limit: ISM equipment may be operated at any frequency above 9KHz and the frequency band 2400-2500MHz is allocated for use by ISM equipment

ISM frequency	Tolerance
6.78 MHz	±15.0 kHz
13.56 MHz	±7.0 kHz
27.12 MHz	±163.0 kHz
40.68 MHz	±20.0 kHz
915 MHz	±13.0 MHz
2,450 MHz	±50.0 MHz
5,800 MHz	±75.0 MHz
24,125 MHz	±125.0 MHz
61.25 GHz	±250.0 MHz
122.50 GHz	±500.0 MHz
245.00 GHz	±1.0 GHz

3.1.1 Frequency For Normal Voltage

The operating frequency was measured using a spectrum analyzer. Starting with the EUT at room temperature, a 1000mL water load was placed in the center of the oven and the oven was operated at maximum output power. The fundamental operating frequency was monitored until the water load was reduced to 20 percent of the original load.

3.1.2 Frequency For Line Voltage

The EUT was operated / warmed by at least 10 minutes of use with a 1000mL water load at room temperature at the beginning of the test. Then the operating frequency was monitored as the input voltage was varied between 80 and 125 percent of the nominal rating.



3.1.3 Measurement data

Operating Mode	Frequency (MHz)
Normal Voltage	2439.5-2477.2
Line Voltage	2442.3-2480.6

3.2 RADIATION HAZARD TEST

3.2.1 Test Setup

The EUT was set-up according to the FCC MP-5 and FCC Part 18 for radiation Hazard measurement. The measurement was using a microwave leakage meter to measure the radiation leakage in the as-received condition with the oven door closed A 700mL water load in a breaker was located in the center of the oven and the microwave oven was set to maximum power. While the oven operating, the microwave meter will check the leakage and then record the maximum leakage.

3.2.2 Limit

A maximum of 1.0mW/cm² is allowed in according with the applicable FCC standards

3.2.3 Test results

There was no microwave leakage exceeding a power level of 0.47 m W/cm² Observed at any point 5cm or more from the external surface of the oven



3.3 RF OUTPUT POWER MEASUREMENT

3.3.1 Test Standard

Test Requirement	47 CFR PART 18
Test Method	FCC/OST MP-5:1986
Power Supply	AC120/60Hz

3.3.2 EUT Operating mode

Test the EUT in microwave mode with full power.

3.3.3 Test Data

Mass of Water(g)	Mass of the container(g)	ambient temperature (°C)	Initial temperature(°C)	Final temperature(°C)	Heating Time(S)	Output Power (Watt)
1000	280	20.4	9.5	30.8	120	767.34

Formula:

$$P = \frac{4.2 \times m_w(T_2 - T_1) + 0.9 \times m_c(T_2 - T_0)}{t}$$

P is the microwave power output, in watts

M_w is the mass of the water, in grams

M_c is the mass of the container, in grams

T₀ is the ambient temperature, in degrees Celsius

T₁ is Initial temperature of the water, in degrees Celsius

T₂ is final temperature of the water, in degrees Celsius

T is heating time, in seconds, excluding the magnetron filament heating-up time

4. CONDUCTED EMISSION

4.1.1 Conducted Emission Limit

Frequency range (MHz)	Conducted Limit (dB μ V)	
	Quasi-peak	Average
0.15 - 0.50	66 to 56	56 to 46
0.50 - 5	56	46
5 - 30	60	50

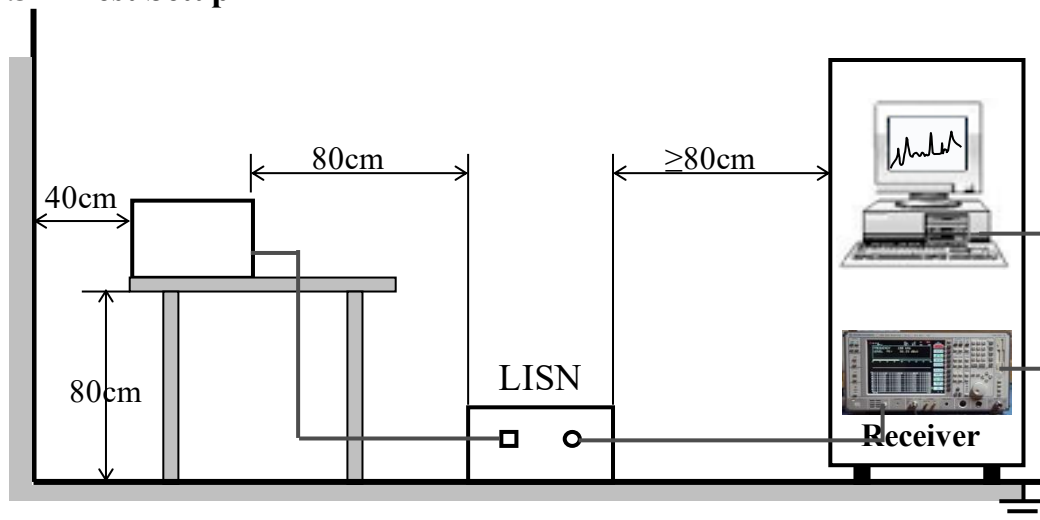
Note:

- The limit decreases linearly with the logarithm of the frequency in the range 0.05 MHz to 0.5 MHz.
- The lower limit is applicable at the transition frequency.

4.1.2 Test Procedure

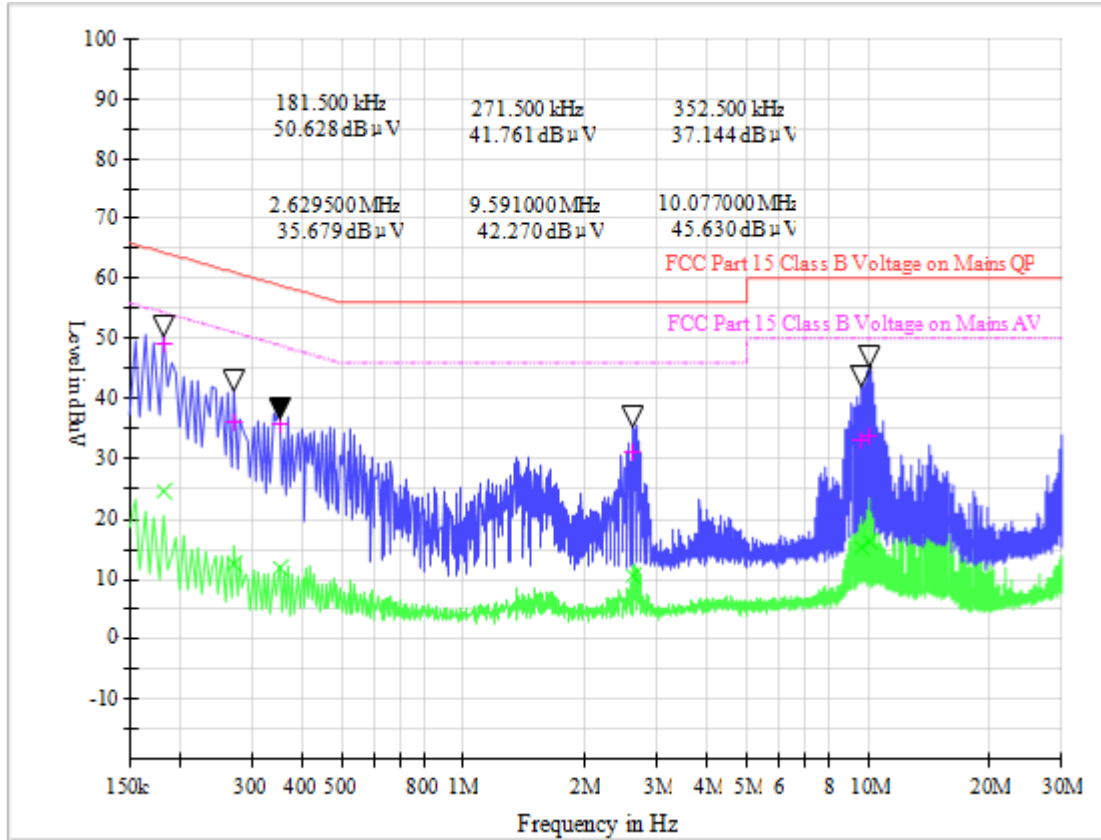
The EUT is placed on a 0.8m high insulating table, which stands on the grounded conducting floor, and keeps 0.4m away from the grounded conducting wall. The EUT is connected to the power mains through a LISN which provides 50 Ω /50 μ H of coupling impedance for the measuring instrument. The Common Antenna is used for the call between the EUT and the System Simulator (SS). A Pulse Limiter is used to protect the measuring instrument. The factors of the whole test system are calibrated to correct the reading.

4.1.3 Test Setup



A. Test Result:

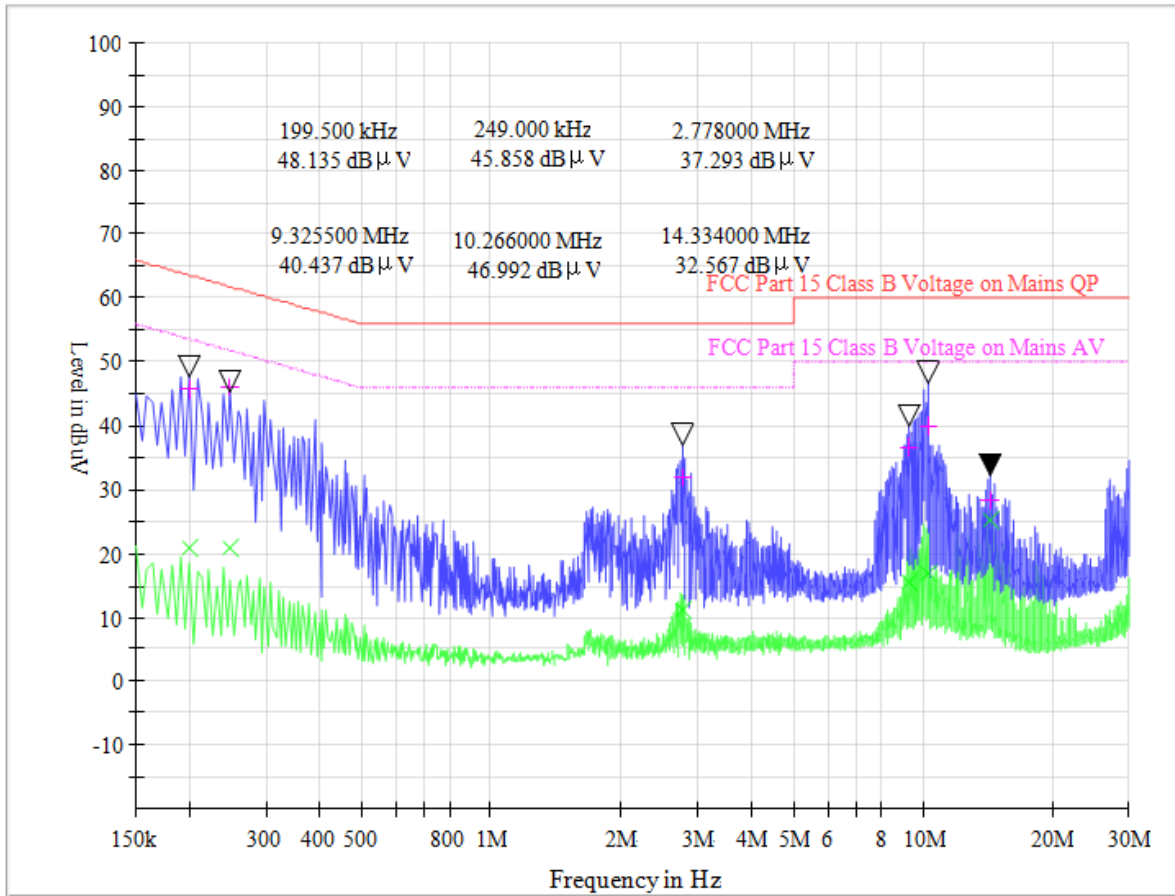
Mains terminal disturbance voltage, Setup1,L phase



(Plot A: L Phase)

Frequency (MHz)	Quasi Peak (dB µ V)	Average (dB µ V)	Cabel Loss (dB)	Corr. (dB)	Margin - QPK	Limit - QPK	Margin - AV	Limit - AV (dB µ V)
0.181500	49.17	24.63	0.1	10.3	15.25	64.4	29.79	54.4
0.271500	35.95	12.60	0.1	10.3	25.12	61.1	38.47	51.1
0.352500	35.69	11.74	0.1	10.3	23.21	58.9	37.16	48.9
2.629500	30.90	10.39	0.2	10.2	25.10	56.0	35.61	46.0
9.591000	32.99	15.36	0.2	10.5	27.01	60.0	34.64	50.0
10.077000	33.63	16.30	0.2	10.6	26.37	60.0	33.70	50.0

Mains terminal disturbance voltage, Setup 1, N phase



(Plot B: N Phase)

Frequency (MHz)	Quasi Peak (dB µ V)	Average (dB µ V)	Cabel Loss (dB)	Corr. (dB)	Margin - QPK	Limit - QPK	Margin - AV	Limit - AV (dB µ V)
0.199500	45.70	20.82	0.1	10.3	17.93	63.6	32.81	53.6
0.249000	45.89	21.02	0.1	10.3	15.90	61.8	30.77	51.8
2.778000	31.80	11.28	0.1	10.2	24.20	56.0	34.72	46.0
9.325500	36.60	15.66	0.2	10.5	23.40	60.0	34.34	50.0
10.26600	39.95	16.81	0.2	10.6	20.05	60.0	33.19	50.0
14.33400	28.22	25.37	0.3	10.9	31.78	60.0	24.63	50.0

Test Result: PASS

5. RADIATED EMISSION

5.1.1 Radiated Emission Limits

- (a) ISM equipment operation on a frequency specified in §18.301 is permitted unlimited radiated energy in the band specified for that frequency.
- (b) The field strength levels of emissions which lie outside the bands specified in §18.301, unless otherwise indicated, shall not exceed the following:

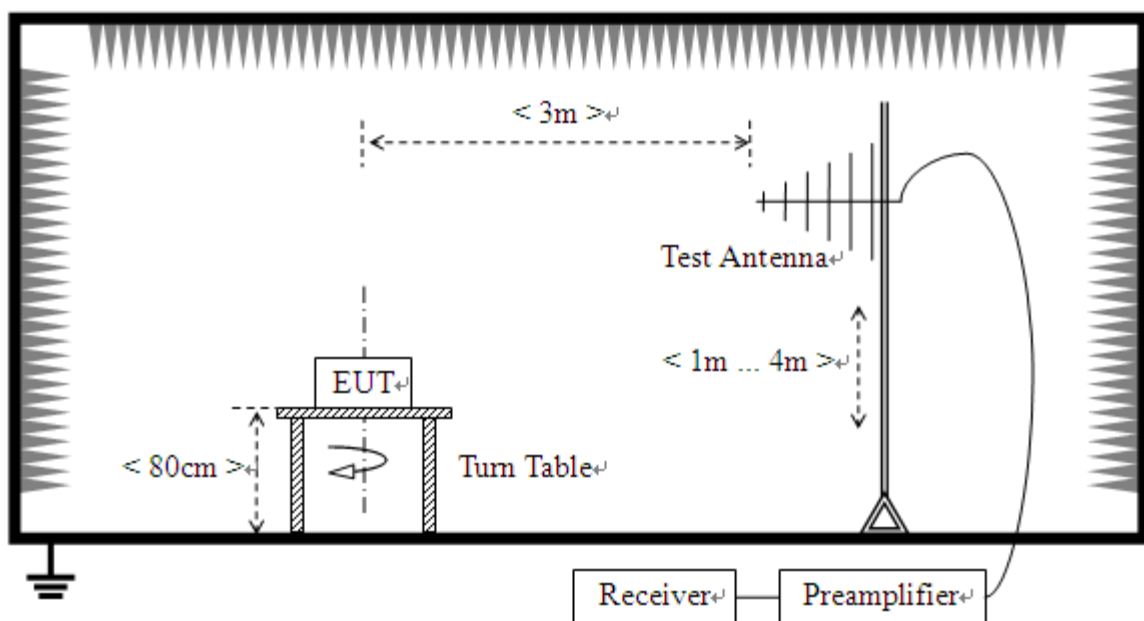
RF Power generated by equipment(watts)	Field strength limit(uV/m) @300m
Below 500	25
500or more	$25 * \text{SQRT}(\text{power}/500)$

Power =767.34W

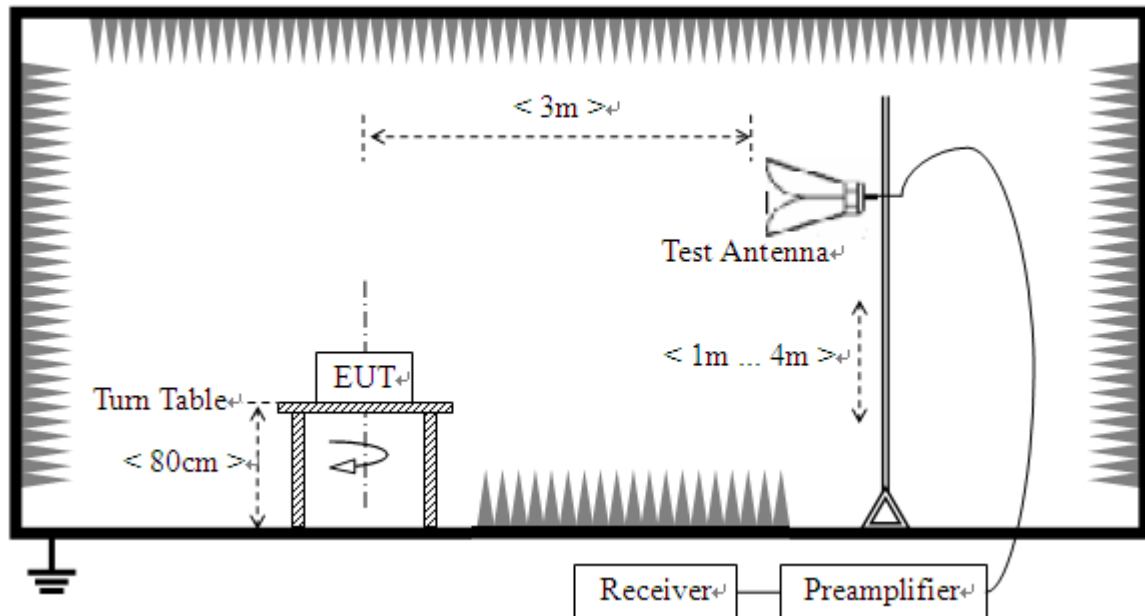
Limit= $20\lg(25 * \text{SQRT}(\text{power}/500)) + 20\lg(300/3)$ @ 3m distance.

5.1.2 Test Setup

For radiated emissions from 30MHz to 1GHz



For radiated emissions above 1GHz



5.1.3 Test Procedure

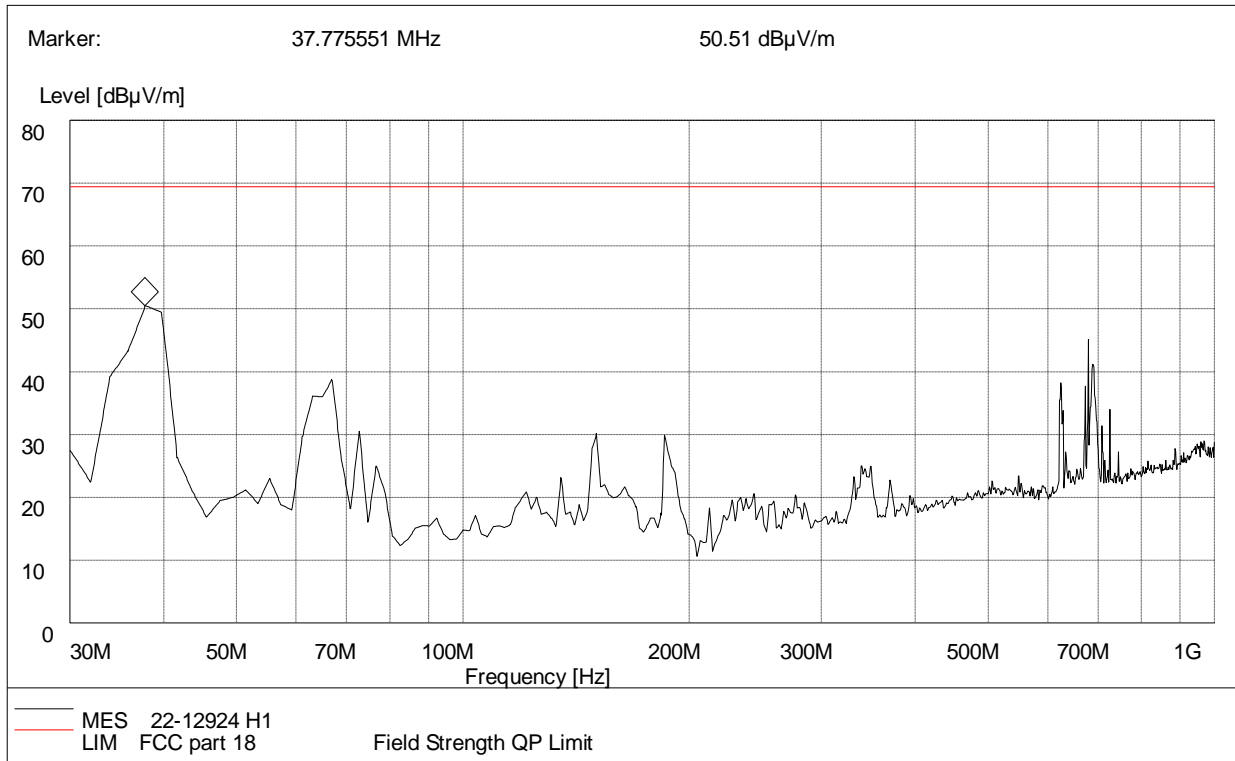
- The measuring distance of at 3 m shall be used for measurements at frequency up to 1GHz. For frequencies above 1GHz, any suitable measuring distance may be used.
- The EUT was placed on the top of a rotating table 0.8 meters above the ground at a 3 meter open area test site. The table was rotated 360 degrees to determine the position of the highest radiation.
- The height of the equipment or of the substitution antenna shall be 0.8 m; the height of the test antenna shall vary between 1 m to 4 m. Both horizontal and vertical polarizations of the antenna are set to make the measurement
- The initial step in collecting conducted emission data is a spectrum analyzer peak detector mode pre-scanning the measurement frequency range. Significant peaks are then marked and then Quasi Peak detector mode re-measured.
- If the Peak Mode measured value compliance with and lower than Quasi Peak Mode Limit, the EUT shall be deemed to meet QP Limits and then no additional QP Mode measurement performed.
- For the actual test configuration, please refer to the related Item –EUT Test Photos.

Note: Both horizontal and vertical antenna polarities were tested and performed pretest to three orthogonal axis. The worst-case emissions were reported



Test Result:

Radiation disturbances, antenna polarization: Setup1, Horizontal

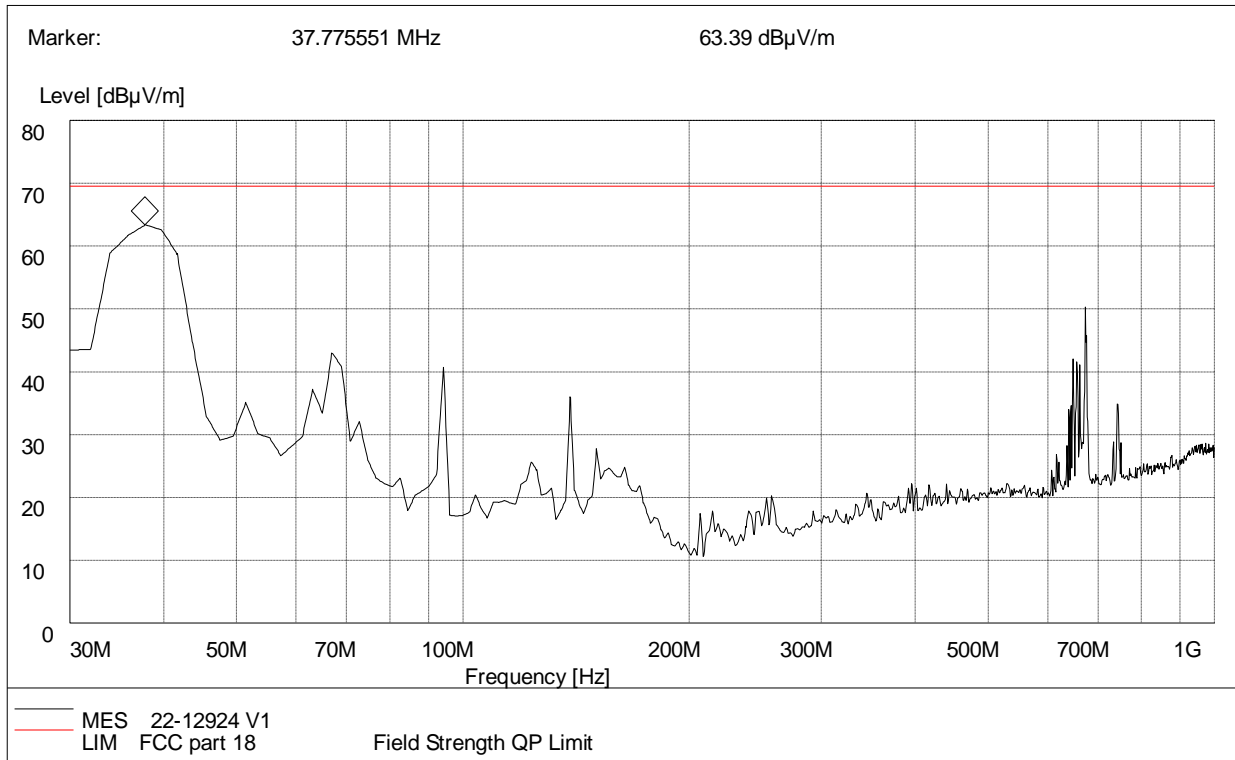


(Plot A: Test Antenna Vertical30M - 1G)

Frequency (MHz)	Quasi Peak (dBµV/m)	Bandwidth (kHz)	Antenna height (cm)	Limit (dBµV/m)	Margin (dB)	Antenna	Verdict
37.56	50.03	120.000	100.0	69.81	19.78	Horizontal	Pass
66.93	38.78	120.000	100.0	69.81	31.03	Horizontal	Pass
150.12	30.15	120.000	100.0	69.81	39.66	Horizontal	Pass
185.63	29.47	120.000	100.0	69.81	40.34	Horizontal	Pass
628.76	31.93	120.000	100.0	69.81	37.88	Horizontal	Pass
687.21	40.42	120.000	100.0	69.81	29.39	Horizontal	Pass



Radiation disturbances, antenna polarization: Setup1, Vertical



(Plot B: Test Antenna Horizontal30M - 1G)

Frequency (MHz)	Quasi Peak (dBµV/m)	Bandwidth (kHz)	Antenna height (cm)	Limit (dBµV/m)	Margin (dB)	Antenna	Horizontal
39.02	54.96	120.000	100.0	69.81	14.85	Vertical	Pass
65.32	42.98	120.000	100.0	69.81	26.83	Vertical	Pass
94.14	40.68	120.000	100.0	69.81	29.13	Vertical	Pass
138.74	35.14	120.000	100.0	69.81	34.67	Vertical	Pass
647.96	42.07	120.000	100.0	69.81	27.74	Vertical	Pass
673.48	50.30	120.000	100.0	69.81	19.51	Vertical	Pass

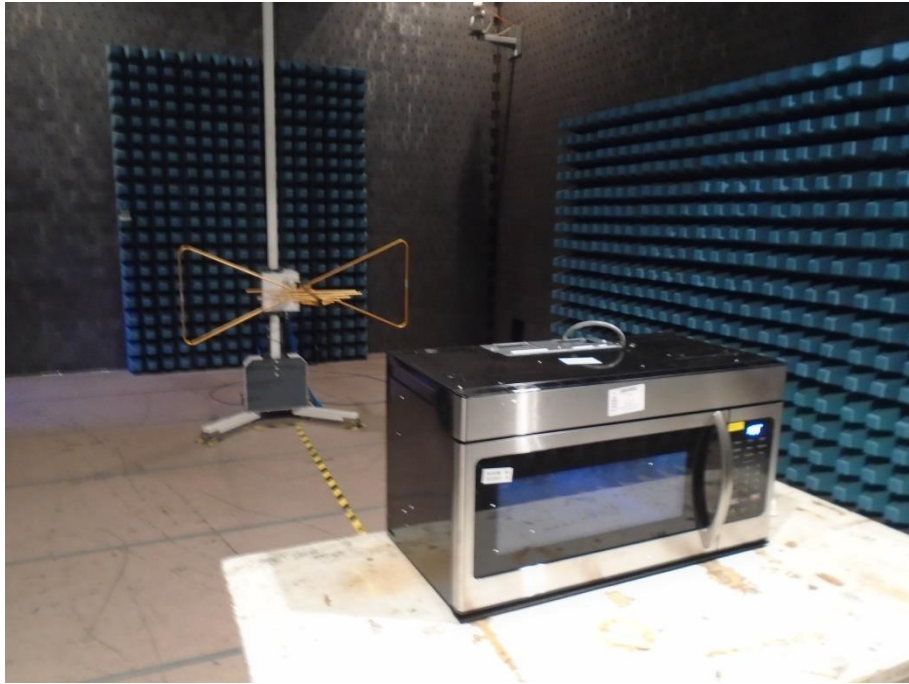
**Above 1GHz, Setup1**

NO.	Freq. [MHz]	Level [dB μ V/m]	Factor [dB]	Limit [dB μ V/m]	Margin [dB]	Height [cm]	Angle [°]	Polarity
1	1820.45	44.34	-13.06	69.81	25.47	100	149	Vertical
2	2122.28	49.20	-11.74	69.81	20.61	100	238	Vertical
3	2458.11	52.90	-10.79	69.81	16.91	100	116	Vertical
4	4400.85	54.06	-3.64	69.81	15.75	100	245	Vertical
5	4987.49	54.18	-1.19	69.81	15.63	100	237	Vertical
6	5833.45	51.52	-0.98	69.81	18.29	100	314	Vertical

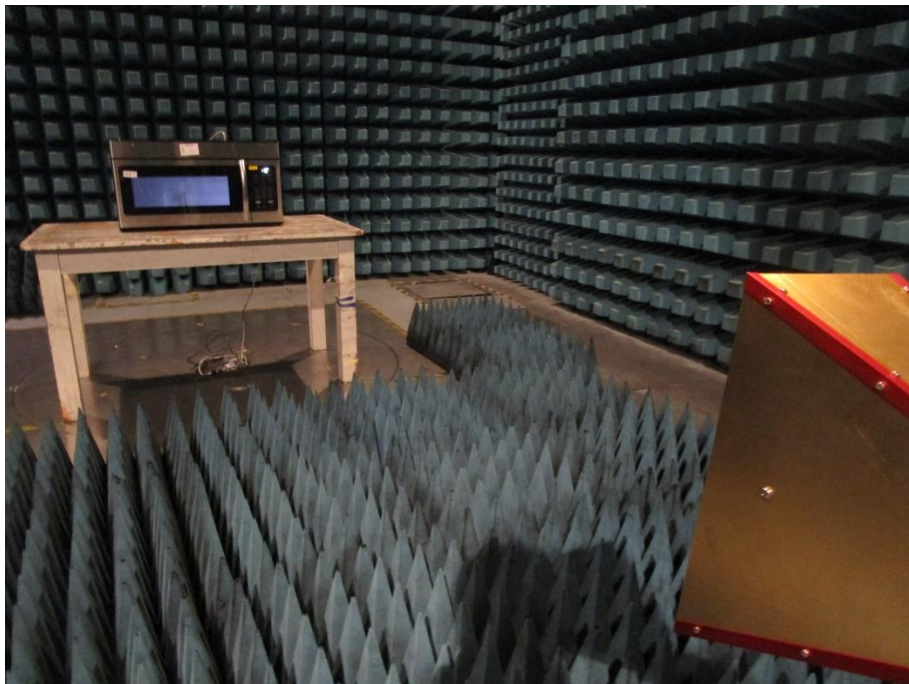
NO.	Freq. [MHz]	Level [dB μ V/m]	Factor [dB]	Limit [dB μ V/m]	Margin [dB]	Height [cm]	Angle [°]	Polarity
1	1862.96	51.35	-12.62	69.81	18.46	100	79	Horizontal
2	1939.48	53.60	-12.46	69.81	16.21	100	110	Horizontal
3	2126.53	53.20	-11.74	69.81	16.61	100	344	Horizontal
4	2436.85	58.21	-10.76	69.81	11.60	100	187	Horizontal
5	6475.36	56.52	1.72	69.81	13.29	100	351	Horizontal
6	6789.94	56.16	2.03	69.81	13.65	100	144	Horizontal

APPENDIX I: PHOTOGRAPHS OF EMC TEST CONFIGURATION

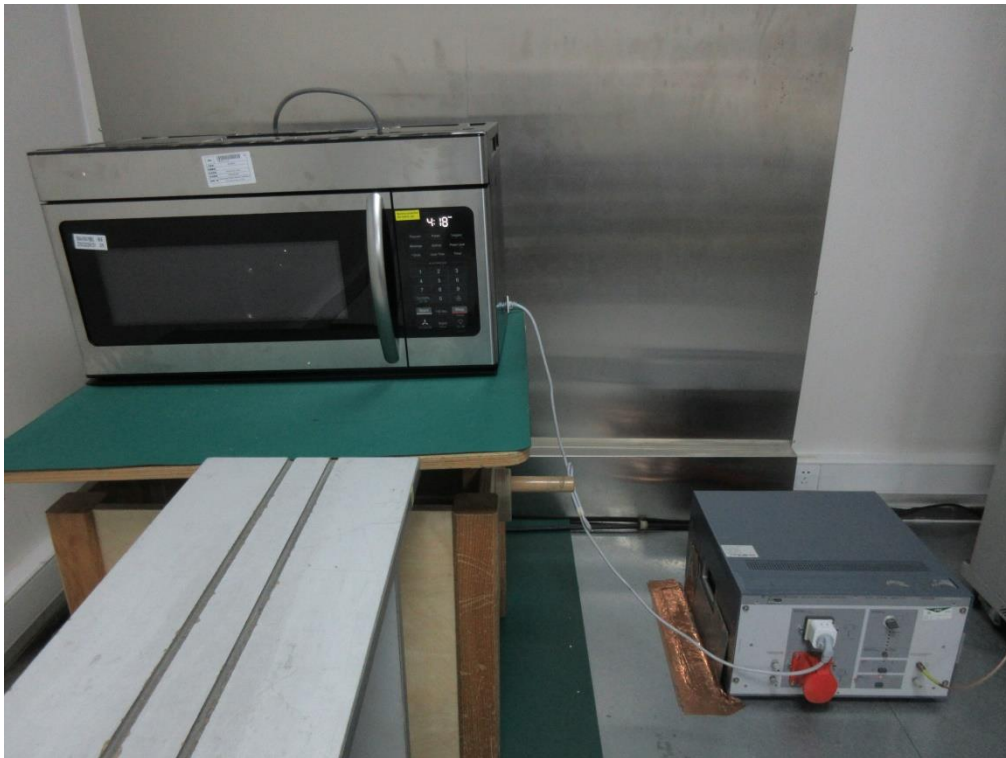
1. Radiated Emission Measurement below 1GHz



2. Radiated Emission Measurement above 1GHz

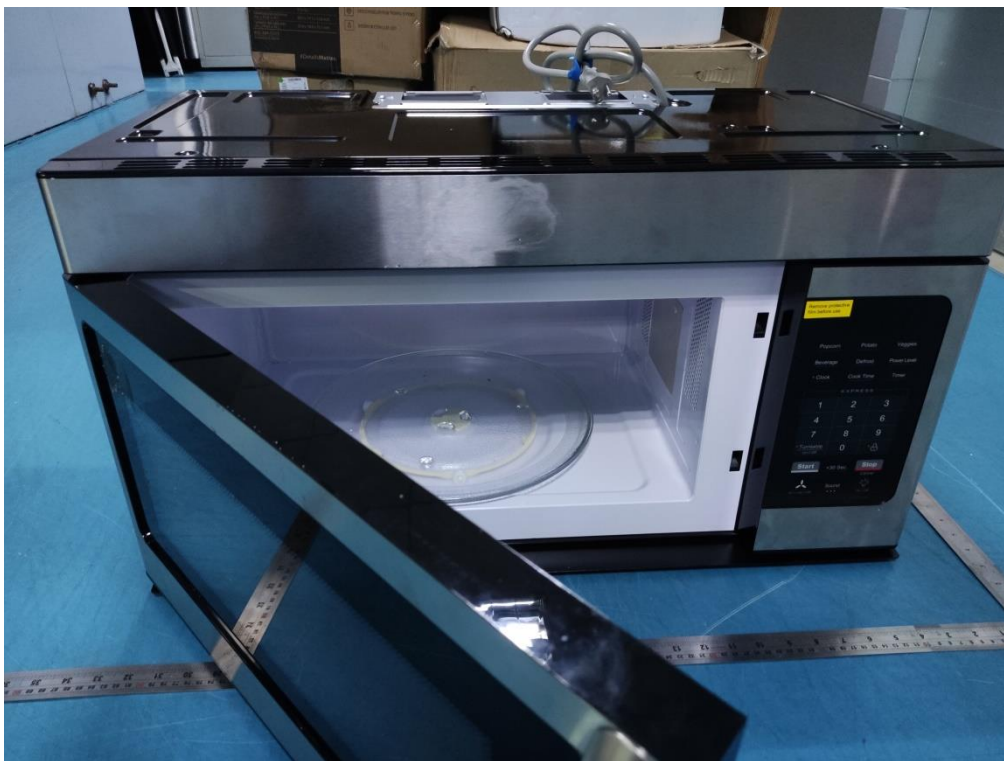


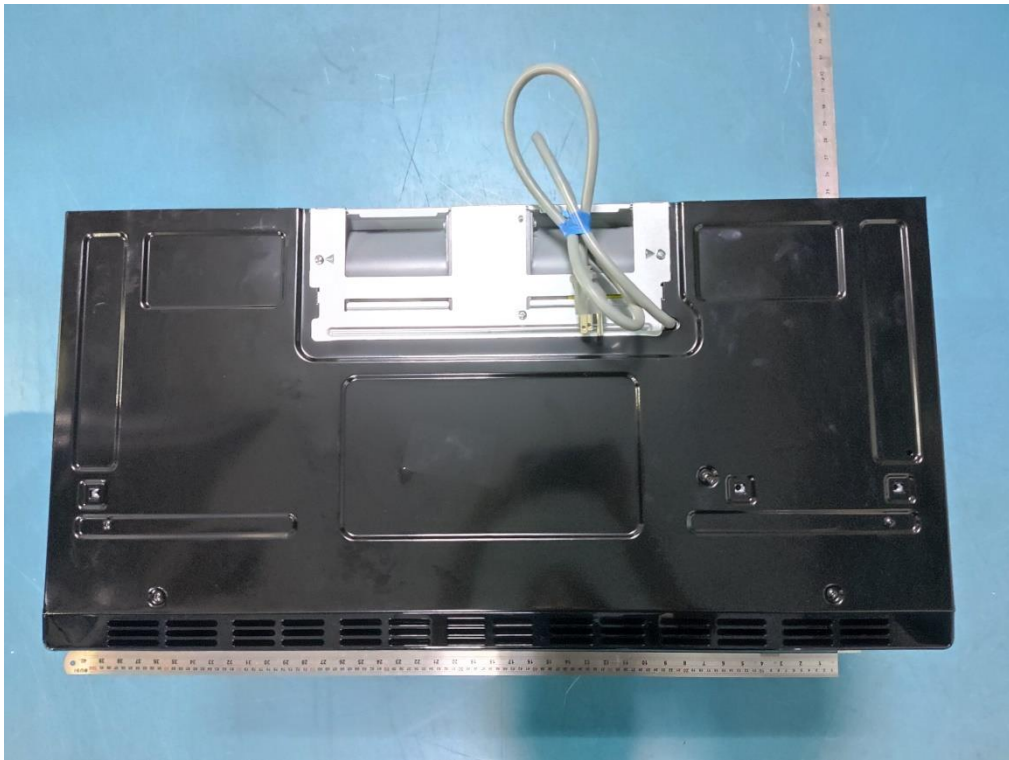
3. Conducted emission at AC mains input/output port Measurement



APPENDIX II: PHOTOGRAPHS OF PRODUCT PHOTO

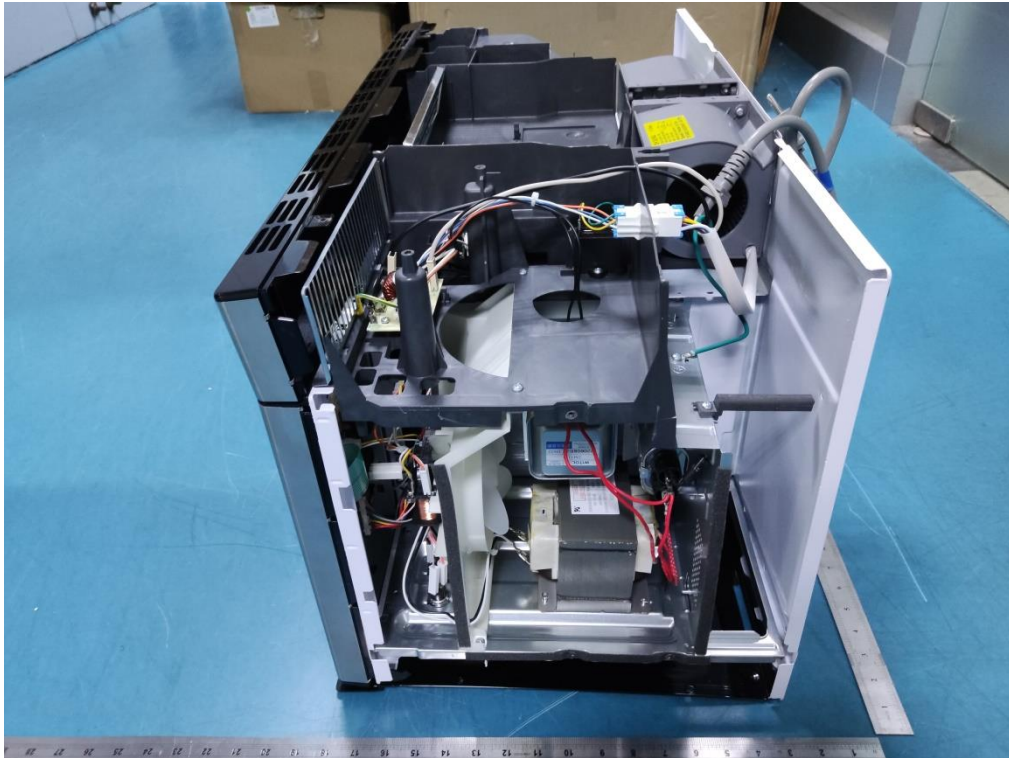
External Photo

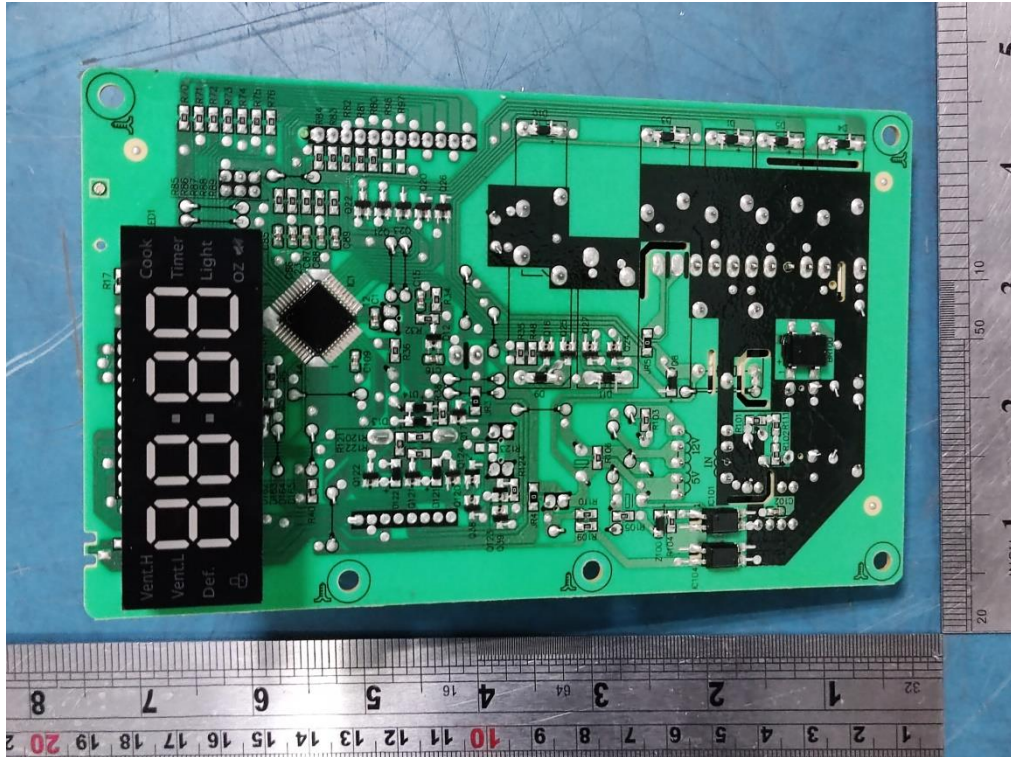
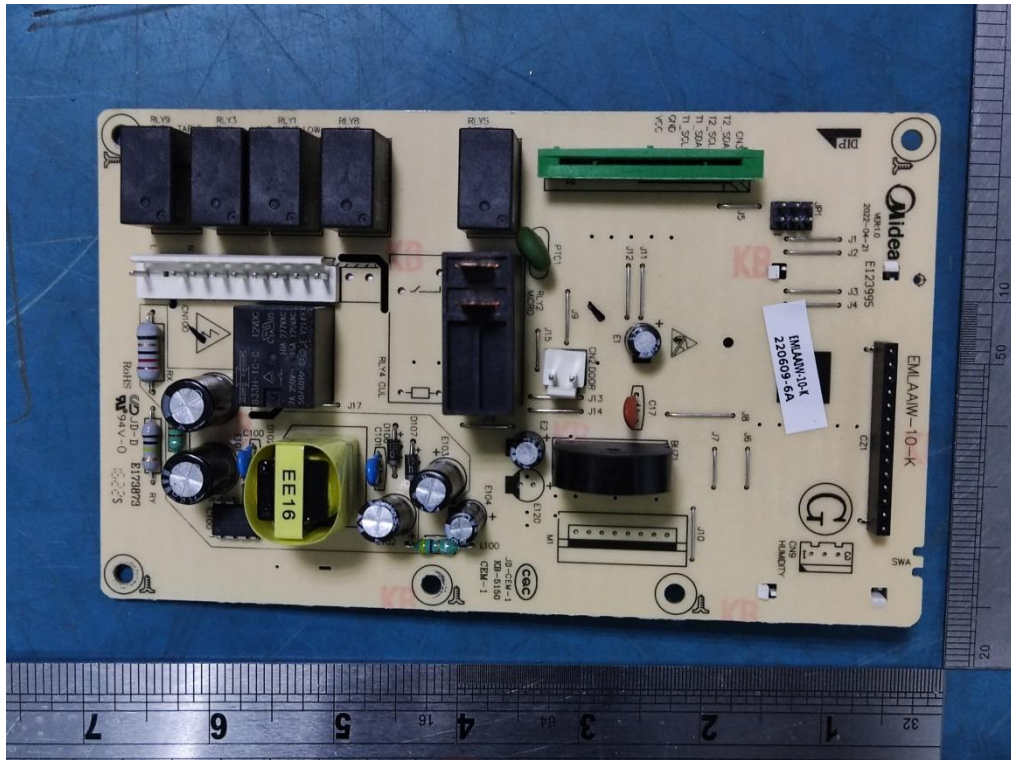


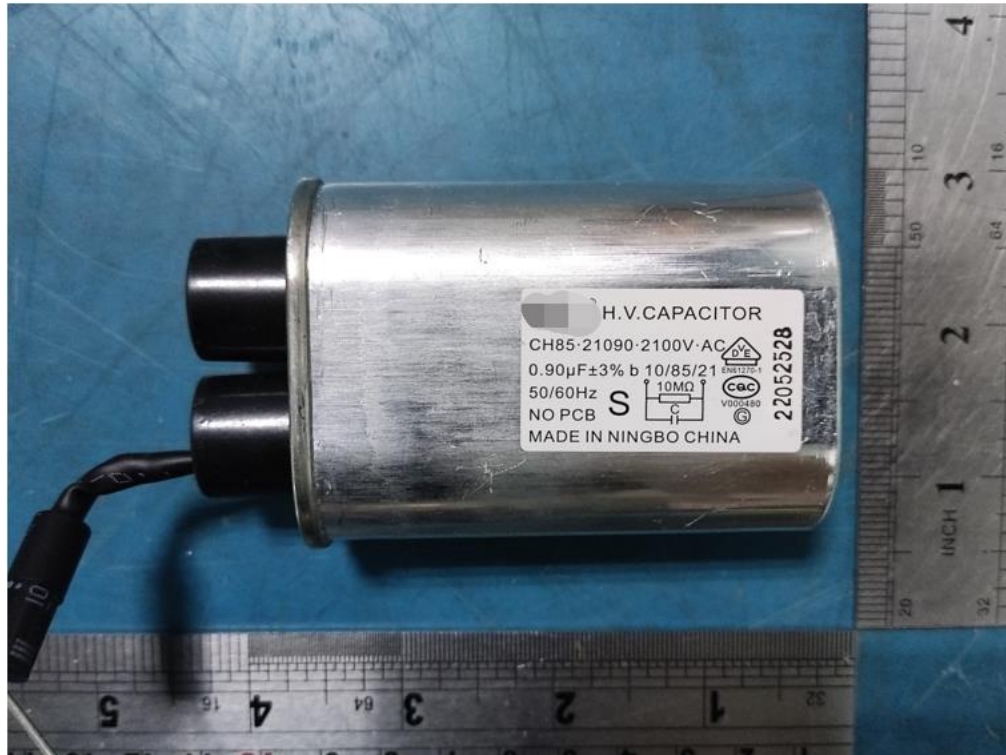
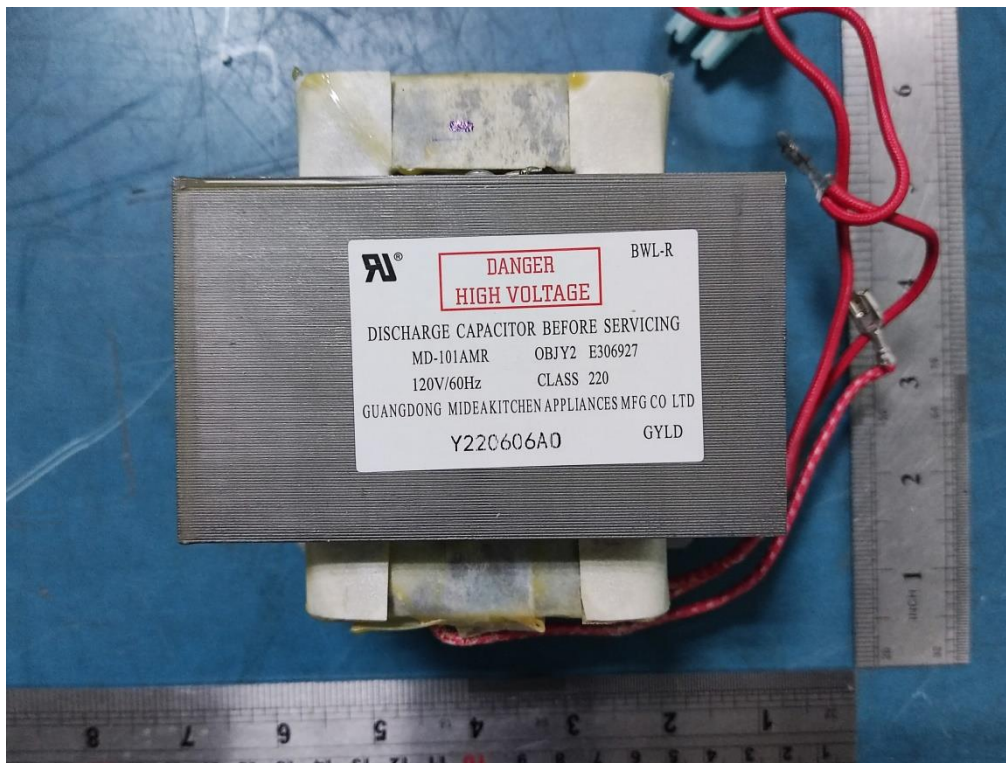




Internal Photo







※※※ End of Report ※※※