



EMCTEST REPORT

Report No.: SET2021-09164
Product Name: Microwave Oven
Trade Name: Midea
Model No. : XM044KYY, XM044KYYY
FCC ID : VG8EM044KYY
Applicant: Guangdong Midea Kitchen Appliances Manufacturing Co., Ltd
Received Date: 2021.07.12
Tested Date: 2021.07.12-2021.07.20
Issued by: CCIC Southern Testing Co., Ltd.
Lab Location: Electronic Testing Building, No.43 Shahe Road, Xili Street, Nanshan District, Shenzhen, Guangdong, China
Tel: 86 755 26627338 **Fax:** 86 755 26627238

This test report consists of **22** pages in total. It may be duplicated completely for legal use with the approval of the applicant. It should not be reproduced except in full, without the written approval of our laboratory. The client should not use it to claim product endorsement by CCIC-SET. The test results in the report only apply to the tested sample. The test report shall be invalid without all the signatures of testing engineers, reviewer and approver. Any objections must be raised to CCIC-SET within 15 days since the date when the report is received. It will not be taken into consideration beyond this limit.



Test Report

Product Name..... Microwave Oven

Model No. XM044KYY, XM044KYYY

Trade name..... Midea

Applicant..... Guangdong Midea Kitchen Appliances Manufacturing Co.,Ltd

Applicant Address No.6, Yong An Road, Beijiao, Shunde, Foshan, China

Manufacturer Guangdong Midea Kitchen Appliances Manufacturing Co.,Ltd

Manufacturer Address No.6, Yong An Road, Beijiao, Shunde, Foshan, China

Test Standards 47 CFR Part 18

Test Result..... PASS

Tested by Zhang Pei Sen 2021.07.20
Pei Sen Zhang Test Engineer

Reviewed by Chris You 2021.07.20
Chris You Senior Engineer

Approved by Shuangwen Zhang
_____ 2021.07.20
Shuangwen Zhang, Manager



TABLE OF CONTENTS

1.	GENERAL INFORMATION	5
1.1	GENERAL DESCRIPTION OF EUT	5
1.2	Test Standards and Results.....	7
1.3	Facilities and Accreditations.....	8
1.3.1	Facilities	8
1.3.2	Measurement Uncertainty	8
	EQUIPMENTS LIST	9
2.	EMC EMISSION TEST	10
2.1	Test Procedure.....	10
2.1.1	Frequency For Normal Voltage.....	10
2.1.2	Frequency For Line Voltage.....	10
2.1.3	Measurement data	11
2.2	RADIATION HAZARD TEST.....	11
2.2.1	Test Setup.....	11
2.2.2	Limit.....	11
2.2.3	Test results.....	11
2.3	RF OUTPUT POWER MEASUREMENT	12
2.3.1	Test Standard.....	12
2.3.2	EUT Operating mode	12
2.3.3	Test Data.....	12
3.	CONDUCTED EMISSION	13
3.1.1	Conducted Emission Limit.....	13
3.1.2	Test Procedure.....	13
3.1.3	Test Setup.....	13
4.	RADIATED EMISSION	16
4.1.1	Radiated Emission Limits	16
4.1.2	Test Setup.....	16
4.1.3	Test Procedure.....	17
	APPENDIX I: PHOTOGRAPHS OF EMC TEST CONFIGURATION	21



Change History		
Issue	Date	Reason for change
1.0	2021.07.20	First edition



1. GENERAL INFORMATION

1.1 GENERAL DESCRIPTION OF EUT

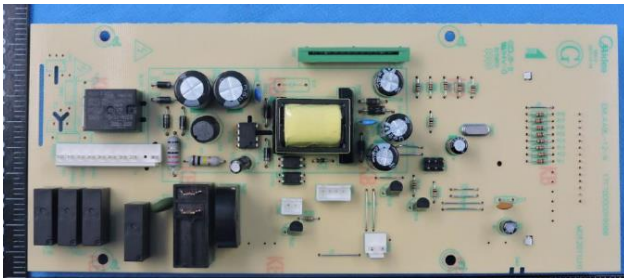
EUT Name.....:	Microwave Oven
Trade Name.....:	Midea
Brand Name.....:	N/A
Serial model No.....:	XM044KYY, XM044KYYY
Hardware Version.....:	N/A
Software Version.....:	N/A
Model	<p>XM044KYY, XM044KYYY model designations as follow: X=E or A, on behalf of controller type; M: indicates microwave function; 044: "0" indicates the microwave output power is 1000W, "44" indicates cavity capacity is 44 liters; K: indicates the design No.; YYY or YY: "Y" indicates different appearance; Model of EM044K6BB was selected for final testing.</p>
Power Supply	120V AC/60Hz
Rated input Power(microwave):	1550W / 1500W
Rated output Power(microwave):	1000W
Frequency.....:	2450MHz (Class B/Group 2)
Magnetron Model.....:	2M319J
Magnetron Manufacturer	WITOL
Description of Support Units:	<ul style="list-style-type: none"> -Load for power output measurement: 1000 milliliters of water in the beaker located in the center of the oven. -Load for frequency measurement: 1000 milliliters of water in the beaker located in the center of the oven. -Load for measurement of radiation on second and third harmonic: Two loads, one of 700 and the other of 300 milliliters, of water are used. Each load is tested both with the beaker located in the center of the oven and with it in the right front corner. -Load for all other measurements: 700 milliliters of water, with the beaker located in the center of the oven.

Note 1: The EUT have the following typical setups during the test:
Setup1: Microwave heating mode (According to FCC PART 18);

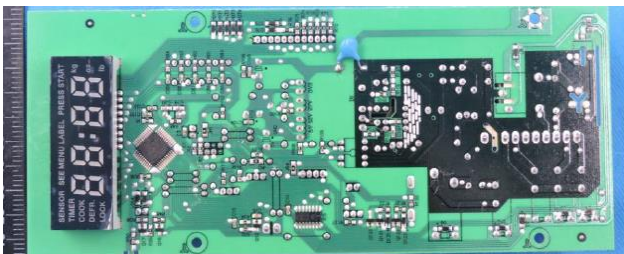
Note 2: For a more detailed description, please refer to Specification or User's Manual supplied by the applicant and/or manufacturer.

Note 3: This report is based the original report#: STS1801291E01 which updates mother board as below.

The original mother board view



The new mother board view



Differences are only for PCB Layout and some electronic components.



1.2 Test Standards and Results

The objective of the report is to perform testing according to 47 CFR Part 18:

No.	Identity	Document Title
1	47 CFR Part 18:2017	Radio Frequency Devices

Test detailed items/section required by FCC rules and results are as below:

Emission			
Standard	Item	Class / Severity	Result
47 CFR PART 18	Conducted Emission (150 kHz to 30 MHz)	18.307(b)	PASS
	Radiated Emission (30 MHz to 1 GHz)	18.305(b)	PASS



1.3 Facilities and Accreditations

1.3.1 Facilities

FCC-Registration No.: CN1283

CCIC Southern Testing Co., Ltd EMC Laboratory has been registered and fully described in a report filed with the FCC (Federal Communications Commission). The acceptance letter from the FCC is maintained in our files. Designation Number: CN1283, valid time is until April 19th, 2023.

ISED Registration: 11185A-1

CCIC Southern Testing Co., Ltd. EMC Laboratory has been registered by Certification and Engineering Bureau of Industry Canada for the performance of radiated measurements with Registration No. 11185A-1 on Aug. 04, 2016, valid time is until April 19th, 2023.

A2LA Code: 5721.01

CCIC-SET is a third party testing organization accredited by A2LA according to ISO/IEC 17025. The accreditation certificate number is 5721.01.

During the measurement, the environmental conditions were within the listed ranges:

Temperature (°C):	15°C- 35°C
Relative Humidity (%):	25% -75%
Atmospheric Pressure (kPa):	86kPa-106kPa

1.3.2 Measurement Uncertainty

The uncertainty is calculated using the methods suggested in the "Guide to the Expression of Uncertainty in Measurement" (GUM) published by ISO.

Uncertainty of Conducted Emission:	Uc = 2.6 dB (k=2)
Uncertainty of Radiated Emission: (30MHz~1GHz)	Uc = 3.91 dB (k=2)
Uncertainty of Radiated Emission: (1~18GHz)	Uc = 4.5 dB (k=2)



EQUIPMENTS LIST

A. Use of Software Checklist

Software	Version number	Manufacturer	Use the project
ES-K1	V1.73	ROHDE&SCHWARZ	Radiated Emissions below 1GHz
TS+	JS32-RE 2.5.2.0	Tonsceng	Radiated Emissions above 1GHz
EMC32	Version 10.35.10	ROHDE&SCHWARZ	Conducted Emission

B. Equipment List:

Description	Manufacturer	Model	Serial No.	Calibration Date	Calibration Due. Date
Test Receiver	KEYSIGHT	N9038A	A141202036	2020.11.21	2021.09.20
LISN	ROHDE&SCHWARZ	ESH2-Z5	A0304221	2021.04.02	2022.03.18
Shield Room	Xinju Electronics	L7300*W4500* H3100	A181003226	2018.09.06	2021.09.05
EMI Test Receiver	ROHDE&SCHWARZ	ESIB7	A0501375	2021.06.23	2022.05.23
Broadband Ant.	2786	ETC	A150402239	2018.09.17	2021.09.16
3M Anechoic Chamber	Albatross	SAC-3MAC 9*6*6m	A0412375	2019.03.26	2023.03.25
EMI Test Receiver	ROHDE&SCHWARZ	ESW26	A180502935	2020.09.22	2021.08.12
System Simulator	ROHDE&SCHWARZ	CMW500	A150802214	2019.07.30	2021.07.29
5M Anechoic Chamber	Albatross	SAC-5MAC 12.8x6.8x6.4m	A0304210	2019.03.25	2023.03.24
EMI Horn Ant.	ROHDE&SCHWARZ	HF906	A0304225	2019.04.17	2022.04.17
Spectrum Analyzer	ROHDE&SCHWARZ	ESW26	A180502935	2020.08.27	2021.08.11



2. EMC EMISSION TEST

2.1 Test Procedure

Test Requirement: 47 CFR PART 18

Test Method: FCC/OST MP-5:1986

Power Supply: 120V AC/60Hz

Frequency Range: 2400-2500MHz

Detector: Peak

Limit: ISM equipment may be operated at any frequency above 9KHz and the frequency band 2400-2500MHz is allocated for use by ISM equipment

ISM frequency	Tolerance
6.78 MHz	±15.0 kHz
13.56 MHz	±7.0 kHz
27.12 MHz	±163.0 kHz
40.68 MHz	±20.0 kHz
915 MHz	±13.0 MHz
2.450 MHz	±50.0 MHz
5.800 MHz	±75.0 MHz
24.125 MHz	±125.0 MHz
61.25 GHz	±250.0 MHz
122.50 GHz	±500.0 MHz
245.00 GHz	±1.0 GHz

2.1.1 Frequency For Normal Voltage

The operating frequency was measured using a spectrum analyzer. Starting with the EUT at room temperature, a 1000mL water load was placed in the center of the oven and the oven was operated at maximum output power. The fundamental operating frequency was monitored until the water load was reduced to 20 percent of the original load.

2.1.2 Frequency For Line Voltage

The EUT was operated / warmed by at least 10 minutes of use with a 1000mL water load at room temperature at the beginning of the test. Then the operating frequency was monitored as the input voltage was varied between 80 and 125 percent of the nominal rating.



2.1.3 Measurement data

Operating Mode	Frequency (MHz)
Normal Voltage	2438.2-2472.6
Line Voltage	2431.5-2486.6

2.2 RADIATION HAZARD TEST

2.2.1 Test Setup

The EUT was set-up according to the FCC MP-5 and FCC Part 18 for radiation Hazard measurement. The measurement was using a microwave leakage meter to measure the radiation leakage in the as-received condition with the oven door closed A1000mL water load in a breaker was located in the center of the oven and the microwave oven was set to maximum power. While the oven operating, the microwave meter will check the leakage and then record the maximum leakage.

2.2.2 Limit

A maximum of $1.0\text{mW}/\text{cm}^2$ is allowed in according with the applicable FCC standards

2.2.3 Test results

There was no microwave leakage exceeding a power level of $0.3\text{mW}/\text{cm}^2$ Observed at any point 5cm or more from the external surface of the oven



2.3 RF OUTPUT POWER MEASUREMENT

2.3.1 Test Standard

Test Requirement	47 CFR PART 18
Test Method	FCC/OST MP-5:1986
Power Supply	120VAC/60Hz

2.3.2 EUT Operating mode

Test the EUT in microwave mode with full power.

2.3.3 Test Data

Mass of Water(g)	Mass of the container(g)	ambient temperature (°C)	Initial temperature(°C)	Final temperature(°C)	Heating Time(S)	Output Power (Watt)
1000	280	22.0	10	33.2	120	835.52

Formula:

$$P = \frac{4.2 \times m_w(T_2 - T_1) + 0.9 \times m_c(T_2 - T_0)}{t}$$

P is the microwave power output, in watts

M_w is the mass of the water, in grams

M_c is the mass of the container, in grams

T₀ is the ambient temperature, in degrees Celsius

T₁ is Initial temperature of the water, in degrees Celsius

T₂ is final temperature of the water, in degrees Celsius

T is heating time, in seconds, excluding the magnetron filament heating-up time

3. CONDUCTED EMISSION

3.1.1 Conducted Emission Limit

Frequency range (MHz)	Conducted Limit (dB μ V)	
	Quasi-peak	Average
0.15 - 0.50	66 to 56	56 to 46
0.50 - 5	56	46
5 - 30	60	50

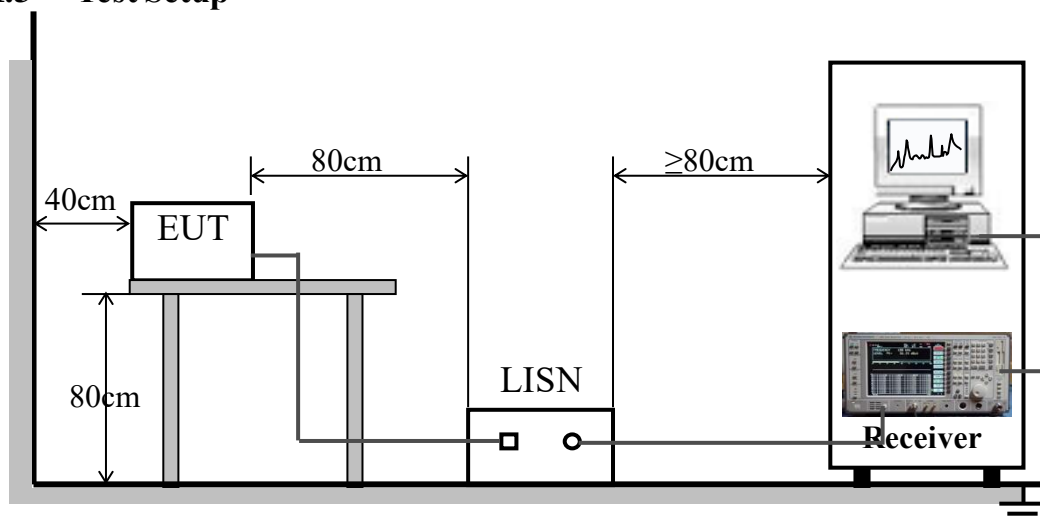
Note:

- The limit decreases linearly with the logarithm of the frequency in the range 0.05 MHz to 0.5 MHz.
- The lower limit is applicable at the transition frequency.

3.1.2 Test Procedure

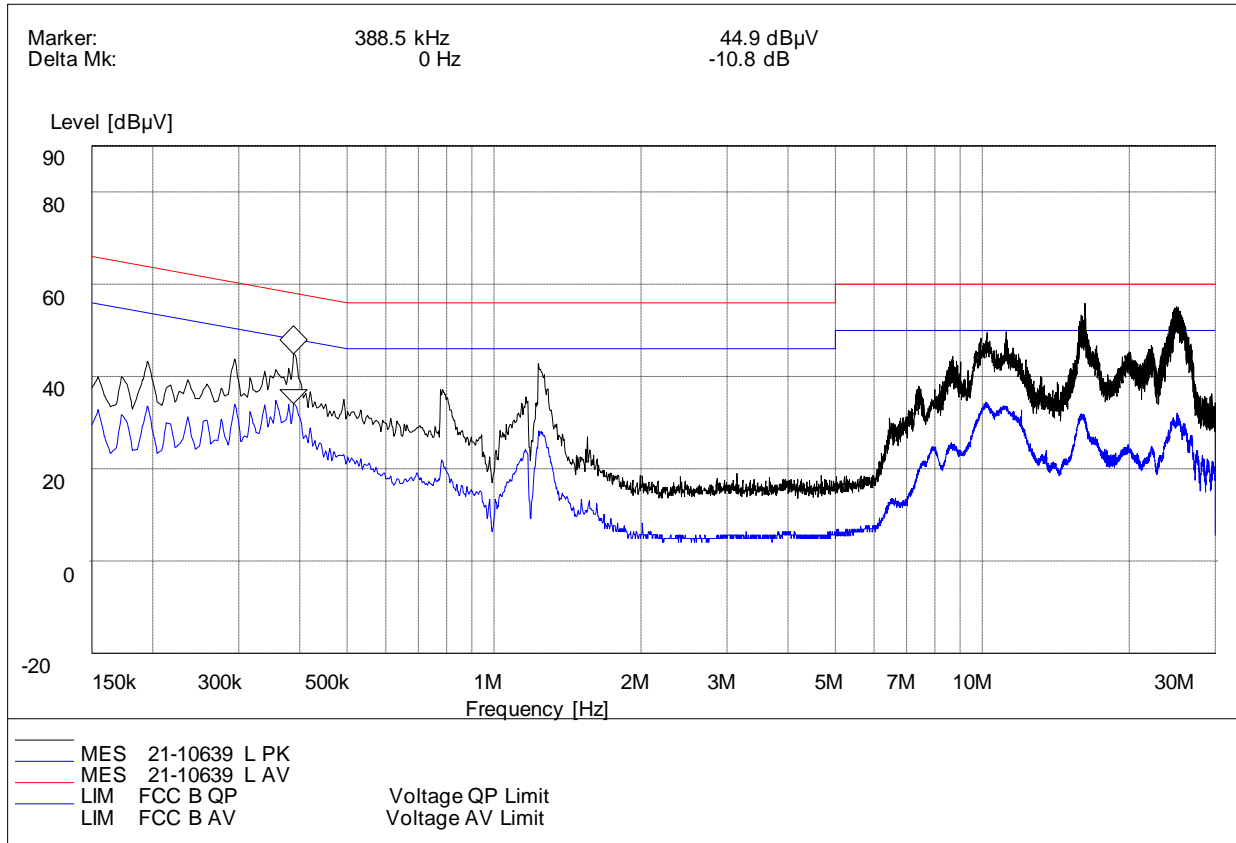
The EUT is placed on a 0.8m high insulating table, which stands on the grounded conducting floor, and keeps 0.4m away from the grounded conducting wall. The EUT is connected to the power mains through a LISN which provides 50 Ω /50 μ H of coupling impedance for the measuring instrument. The Common Antenna is used for the call between the EUT and the System Simulator (SS). A Pulse Limiter is used to protect the measuring instrument. The factors of the whole test system are calibrated to correct the reading.

3.1.3 Test Setup



A. Test Result:

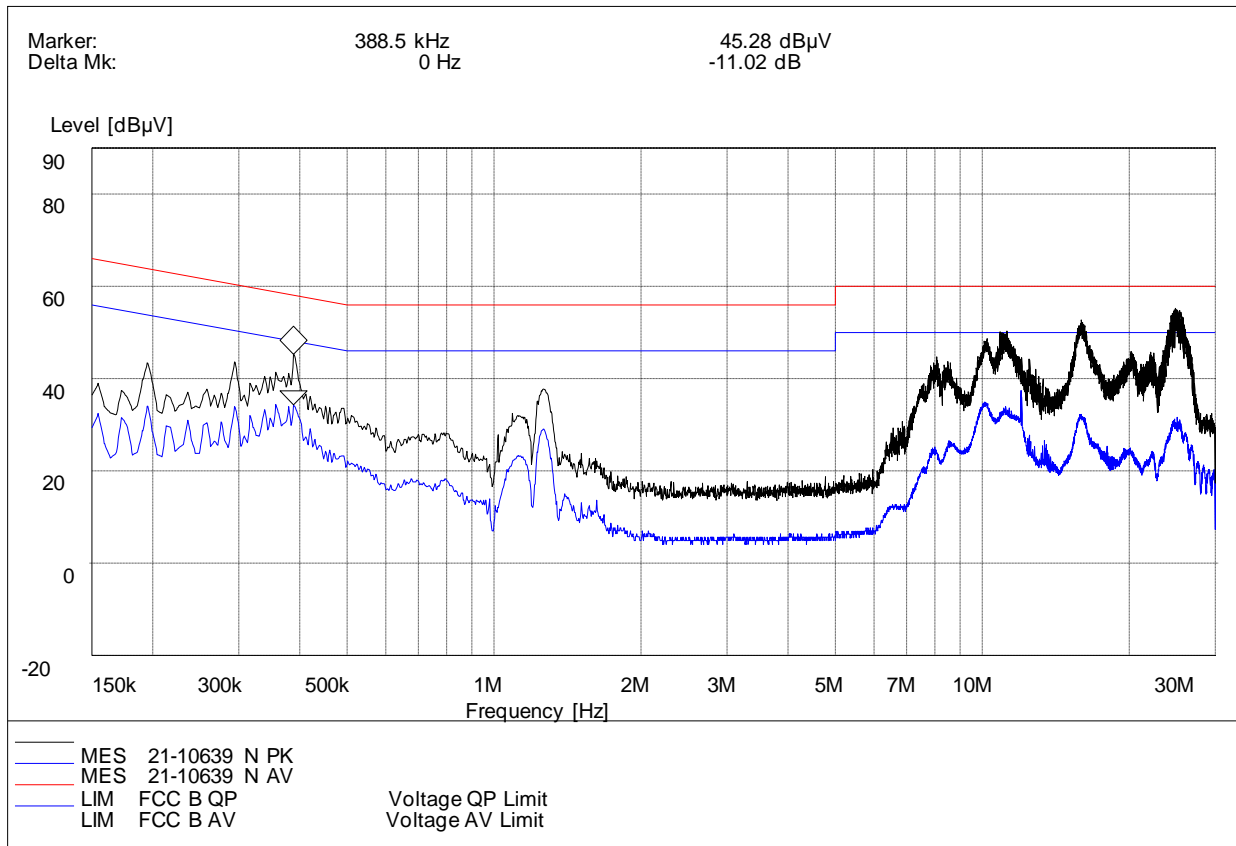
Mains terminal disturbance voltage, Setup1,L phase



(Plot A: L Phase)

Conducted Disturbance at Mains Terminals							
L Test Data							
QP				AV			
Frequency (MHz)	Limits (dBµV)	Measurement Value (dBµV)	Margin (dB)	Frequency (MHz)	Limits (dBµV)	Measurement Value (dBµV)	Margin (dB)
0.2940	60.4	41.63	18.77	0.2940	50.4	34.26	16.14
0.3570	58.8	40.25	18.55	0.3570	48.8	35.25	13.55
0.3885	58.1	42.05	16.05	0.3885	48.1	32.62	15.48
1.2345	56.0	40.35	15.65	1.2345	46.0	29.25	16.75
16.2455	60.0	52.32	7.68	16.2455	50.0	31.25	18.75
25.0565	60.0	51.63	8.37	25.0565	50.0	32.25	17.75

Mains terminal disturbance voltage, Setup 1, N phase



(Plot B: N Phase)

Conducted Disturbance at Mains Terminals							
N Test Data							
QP				AV			
Frequency (MHz)	Limits (dBµV)	Measurement Value (dBµV)	Margin (dB)	Frequency (MHz)	Limits (dBµV)	Measurement Value (dBµV)	Margin (dB)
0.2940	60.4	51.21	9.19	0.2940	50.4	33.69	16.71
0.3570	58.8	39.25	19.55	0.3570	48.8	34.74	14.06
0.3885	58.1	43.17	14.93	0.3885	48.1	34.18	13.92
1.2345	56.0	35.69	20.31	1.2345	46.0	29.58	16.42
15.926	60.0	50.62	9.38	15.926	50.0	31.52	18.48
25.0565	60.0	52.36	7.64	25.0565	50.0	31.47	18.53

Test Result: PASS

4. RADIATED EMISSION

4.1.1 Radiated Emission Limits

- (a) ISM equipment operation on a frequency specified in §18.301 is permitted unlimited radiated energy in the band specified for that frequency.
- (b) The field strength levels of emissions which lie outside the bands specified in §18.301, unless otherwise indicated, shall not exceed the following:

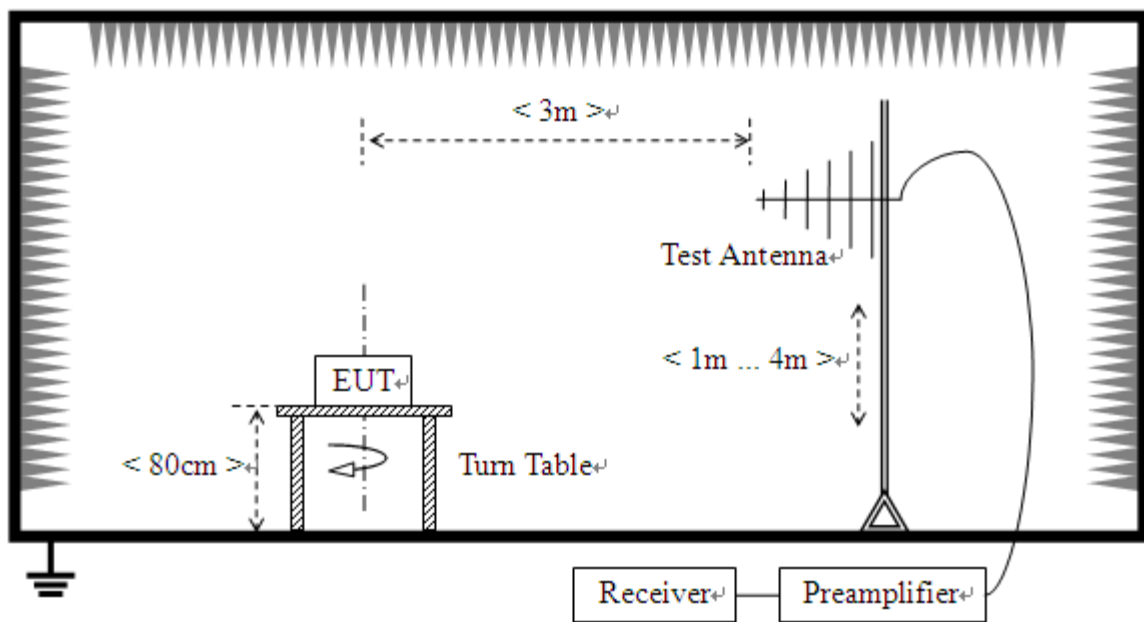
RF Power generated by equipment(watts)	Field strength limit(uV/m) @300m
Below 500	25
500 or more	$25 * \text{SQRT}(\text{power}/500)$

Power = 835.52W

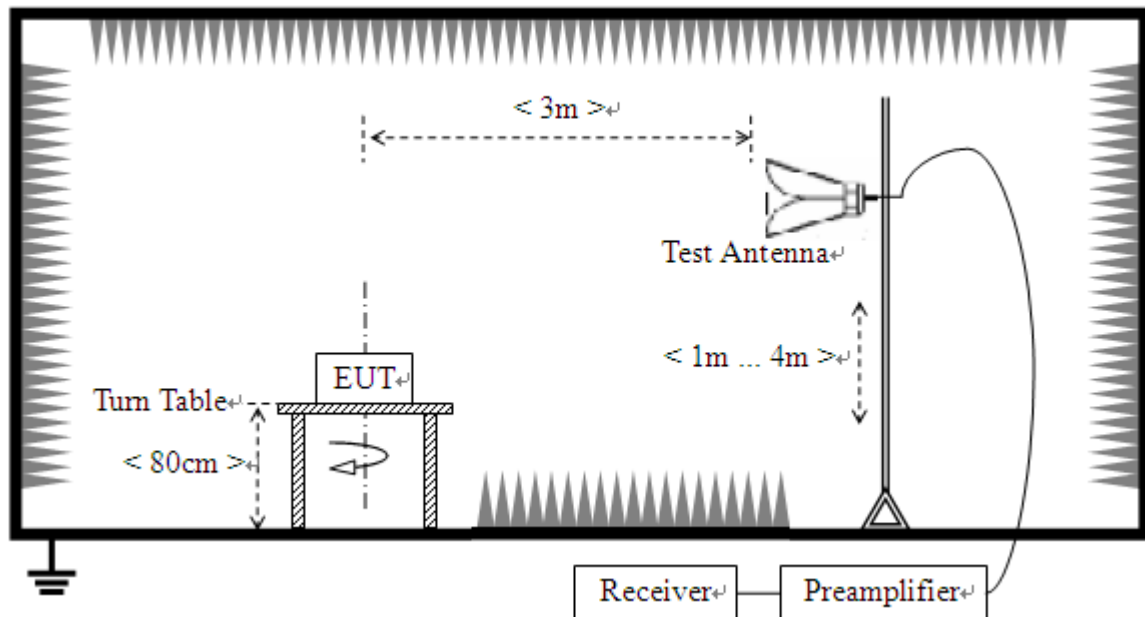
Limit = $20 \lg(25 * \text{SQRT}(\text{power}/500)) + 20 \lg(300/3)$ @ 3m distance.

4.1.2 Test Setup

For radiated emissions from 30MHz to 1GHz



For radiated emissions above 1GHz



4.1.3 Test Procedure

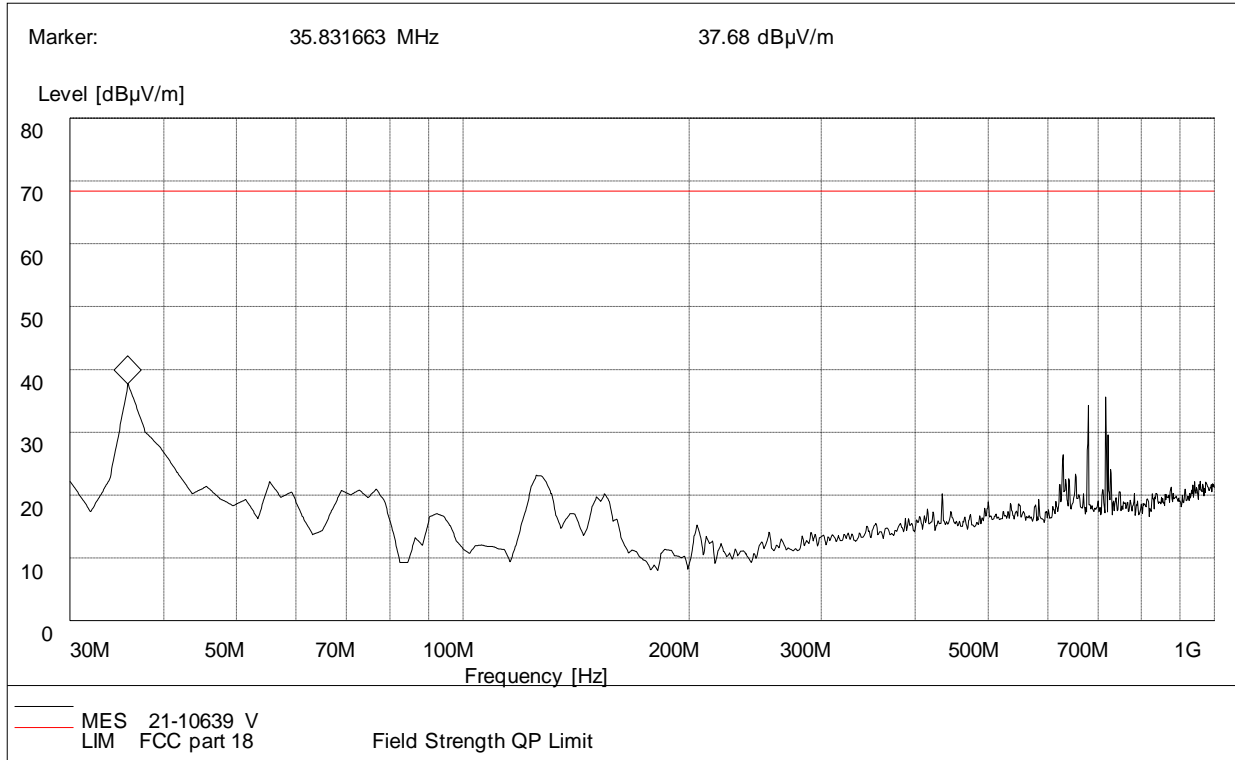
- a. The measuring distance of at 3 m shall be used for measurements at frequency up to 1GHz. For frequencies above 1GHz, any suitable measuring distance may be used.
- b. The EUT was placed on the top of a rotating table 0.8 meters above the ground at a 3 meter open area test site. The table was rotated 360 degrees to determine the position of the highest radiation.
- c. The height of the equipment or of the substitution antenna shall be 0.8 m; the height of the test antenna shall vary between 1 m to 4 m. Both horizontal and vertical polarizations of the antenna are set to make the measurement
- d. The initial step in collecting conducted emission data is a spectrum analyzer peak detector mode pre-scanning the measurement frequency range. Significant peaks are then marked and then Quasi Peak detector mode re-measured.
- e. If the Peak Mode measured value compliance with and lower than Quasi Peak Mode Limit, the EUT shall be deemed to meet QP Limits and then no additional QP Mode measurement performed.
- f. For the actual test configuration, please refer to the related Item –EUT Test Photos.

Note: Both horizontal and vertical antenna polarities were tested and performed pretest to three orthogonal axis. The worst case emissions were reported



Test Result:

Radiation disturbances, antenna polarization: Setup1, Vertical

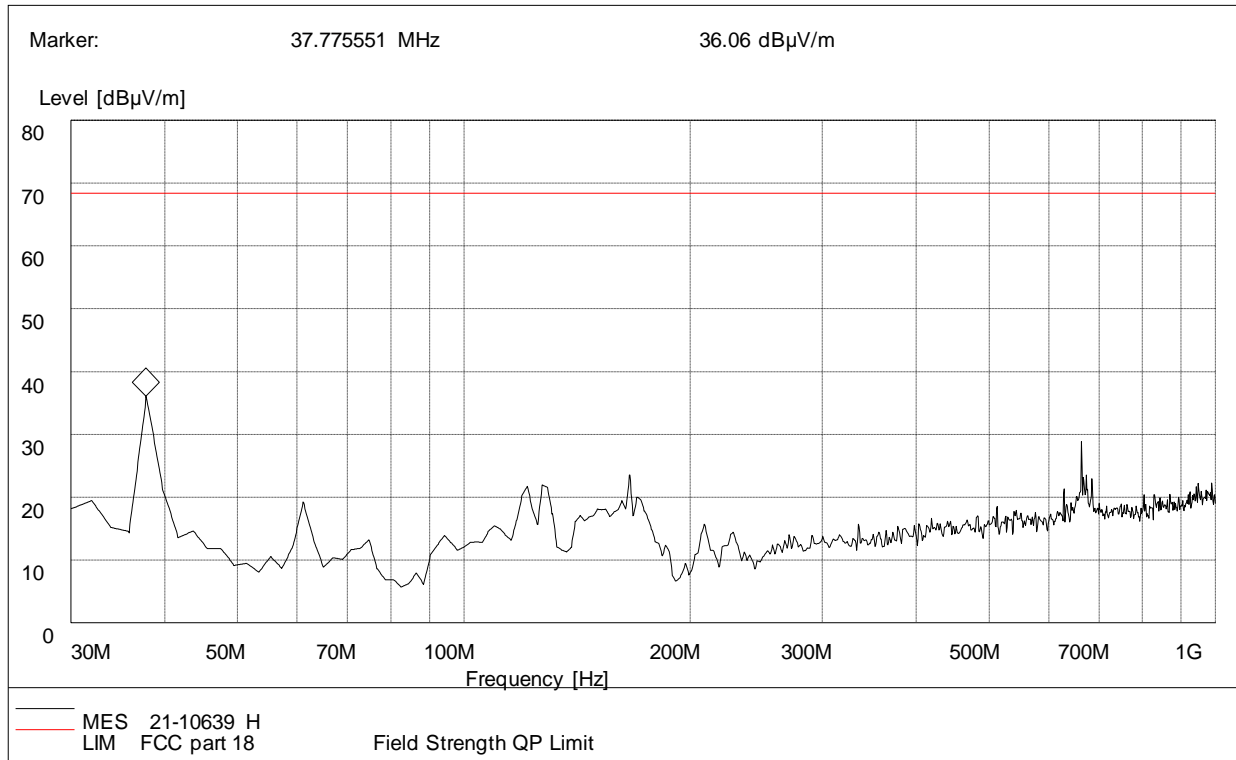


(Plot C: Test Antenna Vertical 30M - 1G)

Frequency (MHz)	QuasiPeak (dBµV/m)	Bandwidth (kHz)	Antenna height (cm)	Limit (dBµV/m)	Margin (dB)	Antenna	Verdict
35.23	36.21	120.000	100.0	70.19	33.98	Vertical	Pass
55.60	21.97	120.000	100.0	70.19	48.22	Vertical	Pass
125.74	22.70	120.000	100.0	70.19	47.49	Vertical	Pass
154.11	20.23	120.000	100.0	70.19	49.96	Vertical	Pass
679.25	33.97	120.000	100.0	70.19	36.22	Vertical	Pass
716.47	34.29	120.000	100.0	70.19	35.90	Vertical	Pass



Radiation disturbances, antenna polarization: Setup1, Horizontal



(Plot D: Test Antenna Horizontal 30M - 1G)

Frequency (MHz)	QuasiPeak (dBµV/m)	Bandwidth (kHz)	Antenna height (cm)	Limit (dBµV/m)	Margin (dB)	Antenna	Horizontal
37.21	35.90	120.000	120.0	70.19	34.29	Horizontal	Pass
61.10	18.23	120.000	100.0	70.19	51.96	Horizontal	Pass
127.42	20.36	120.000	130.0	70.19	49.83	Horizontal	Pass
166.58	22.18	120.000	100.0	70.19	48.01	Horizontal	Pass
208.07	14.54	120.000	100.0	70.19	55.65	Horizontal	Pass
663.19	27.67	120.000	100.0	70.19	42.52	Horizontal	Pass

**Above 1GHz Setup1**

NO.	Freq. [MHz]	Level [dB μ V/m]	Factor [dB]	Limit [dB μ V/m]	Margin [dB]	Height [cm]	Angle [°]	Polarity
1	1280.64	50.40	-14.52	70.19	19.79	100	40	Horizontal
2	1799.39	46.34	-12.00	70.19	23.85	100	10	Horizontal
3	2428.71	60.96	-9.55	70.19	9.23	100	10	Horizontal
4	7148.57	61.67	3.55	70.19	8.52	100	50	Horizontal
5	8092.54	61.17	3.95	70.19	9.02	100	10	Horizontal
6	8449.72	60.27	4.47	70.19	9.92	100	30	Horizontal

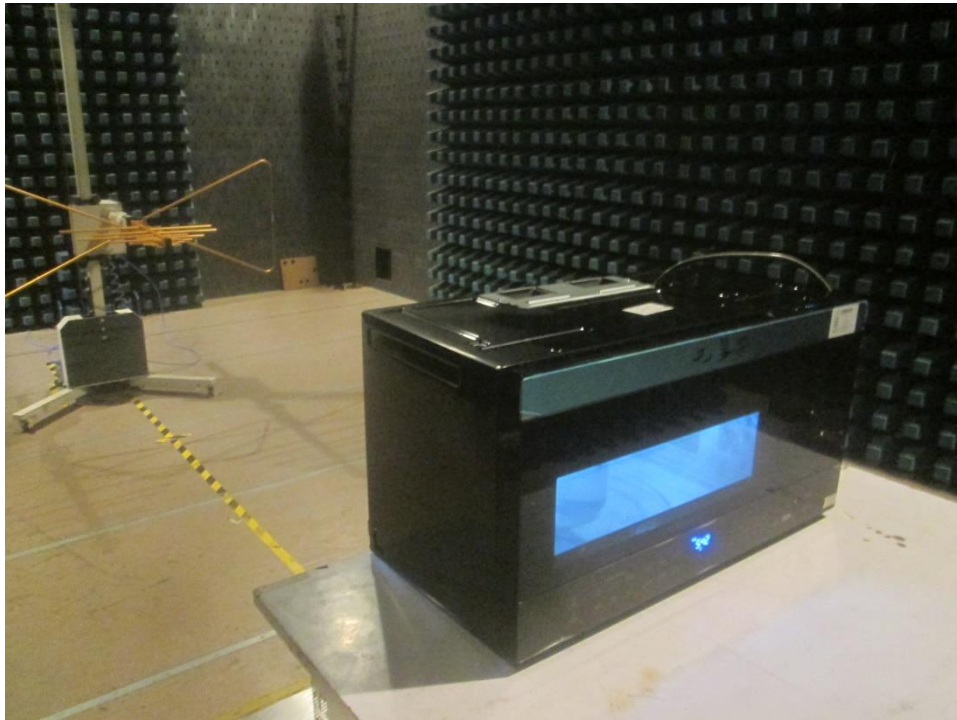
NO.	Freq. [MHz]	Level [dB μ V/m]	Factor [dB]	Limit [dB μ V/m]	Margin [dB]	Height [cm]	Angle [°]	Polarity
1	1246.62	50.78	-14.64	70.19	19.41	100	60	Vertical
2	2267.13	59.33	-10.11	70.19	10.86	100	50	Vertical
3	4206.10	54.26	-2.67	70.19	15.93	100	30	Vertical
4	6102.55	55.91	1.60	70.19	14.28	100	30	Vertical
5	8432.71	61.61	4.46	70.19	8.58	100	60	Vertical
6	9189.59	61.69	5.04	70.19	8.50	100	60	Vertical

REMARKS:

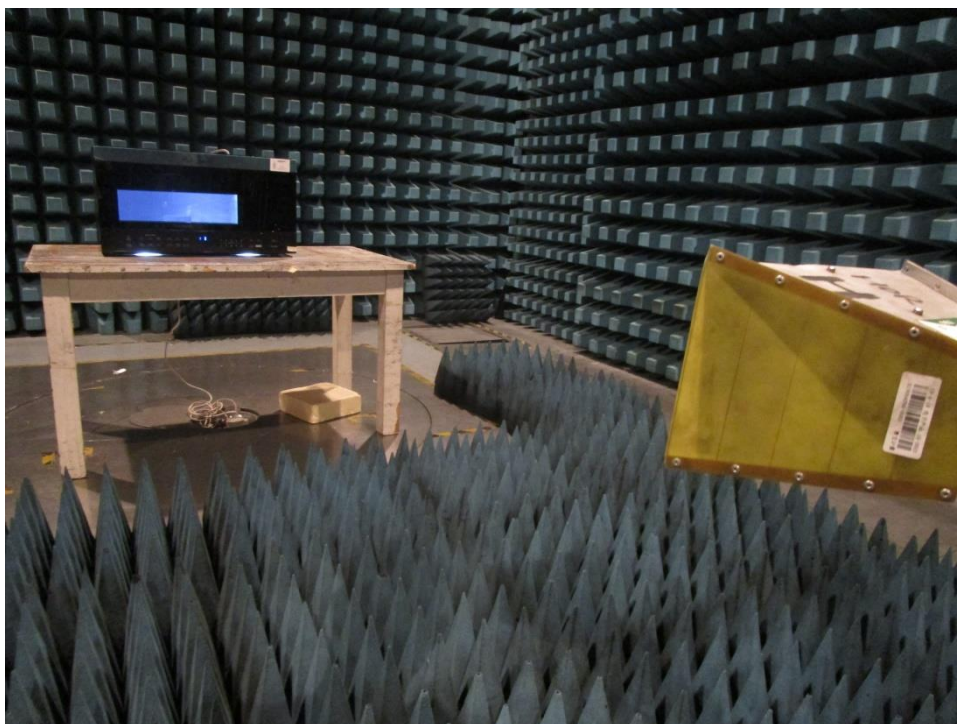
1. Emission Level(dBuV/m) = Raw Value(dBuV) + Correction Factor(dB/m)
2. Correction Factor(dB/m) = Antenna Factor(dB/m) + Cable Factor(dB)
- Pre-Amplifier Factor(dB)

APPENDIX I: PHOTOGRAPHS OF EMC TEST CONFIGURATION

1. Radiated Emission Measurement below 1GHz



2. Radiated Emission Measurement above 1GHz



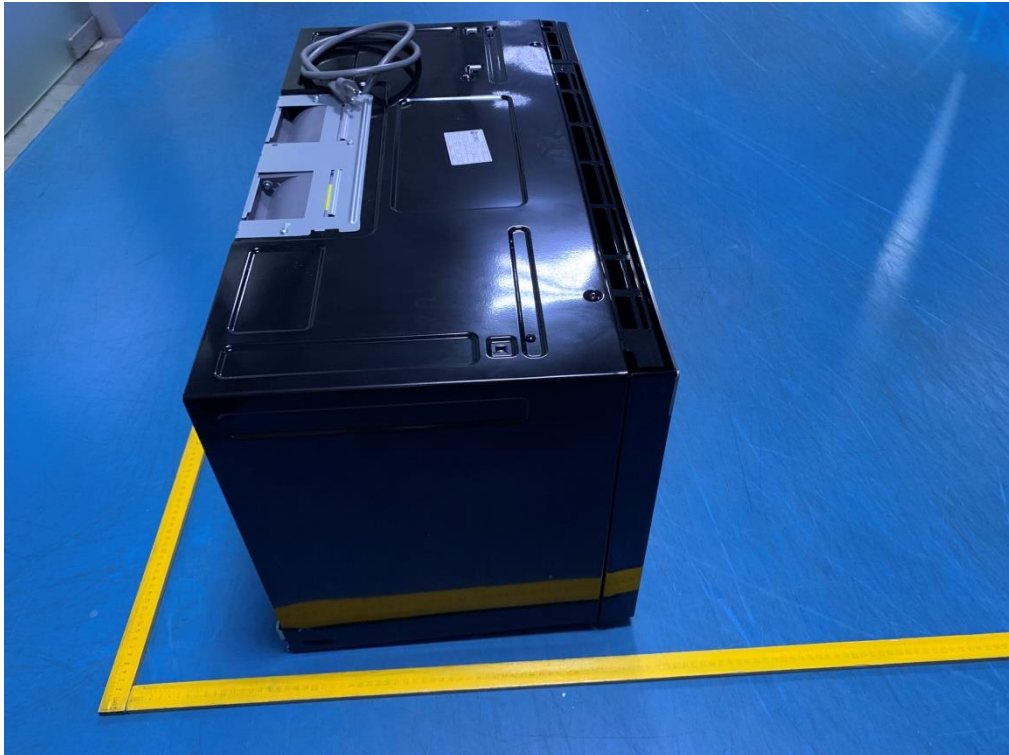
3. Conducted emission at AC mains input/output port Measurement

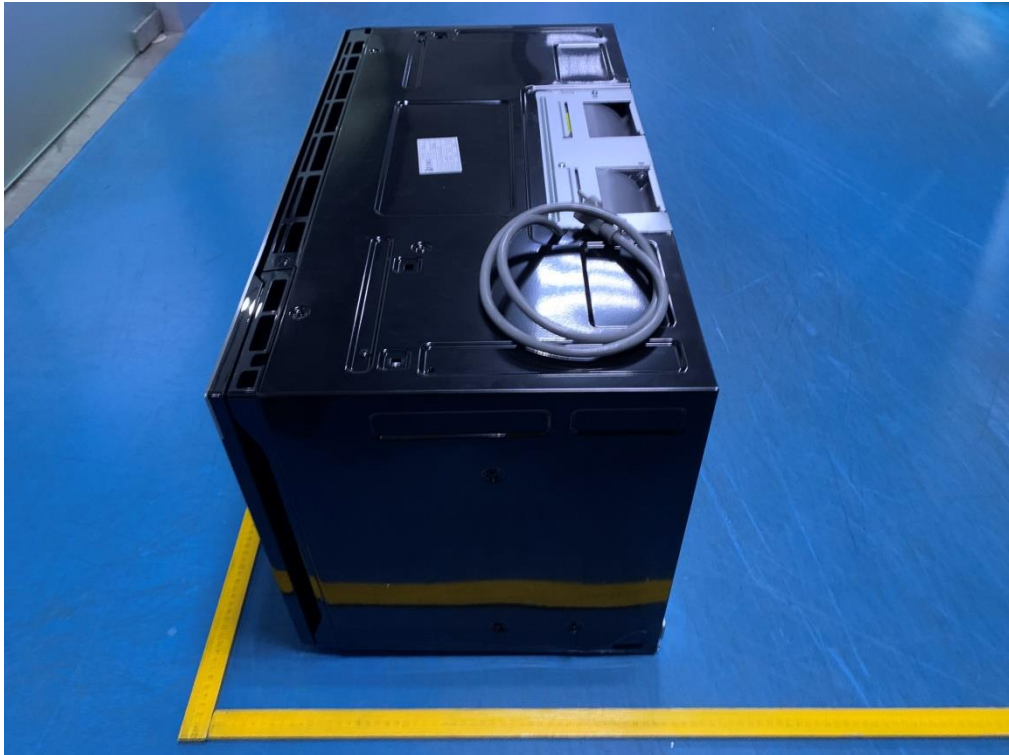


APPENDIX II: PHOTOGRAPHS OF PRODUCT PHOTO

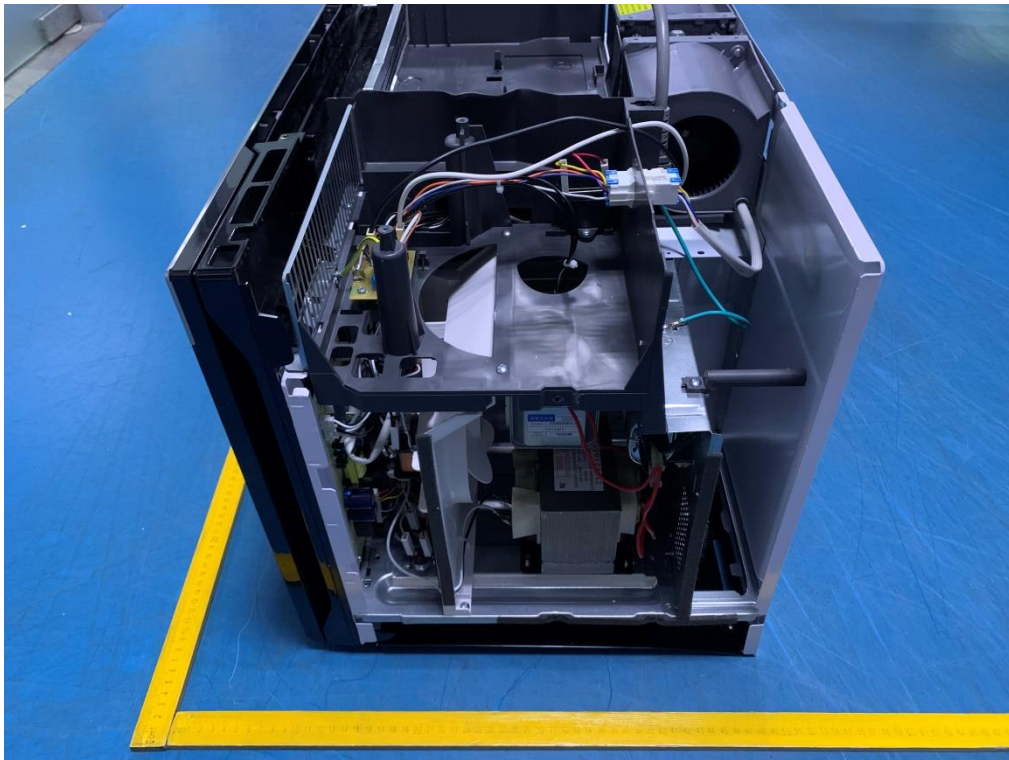
External Photo

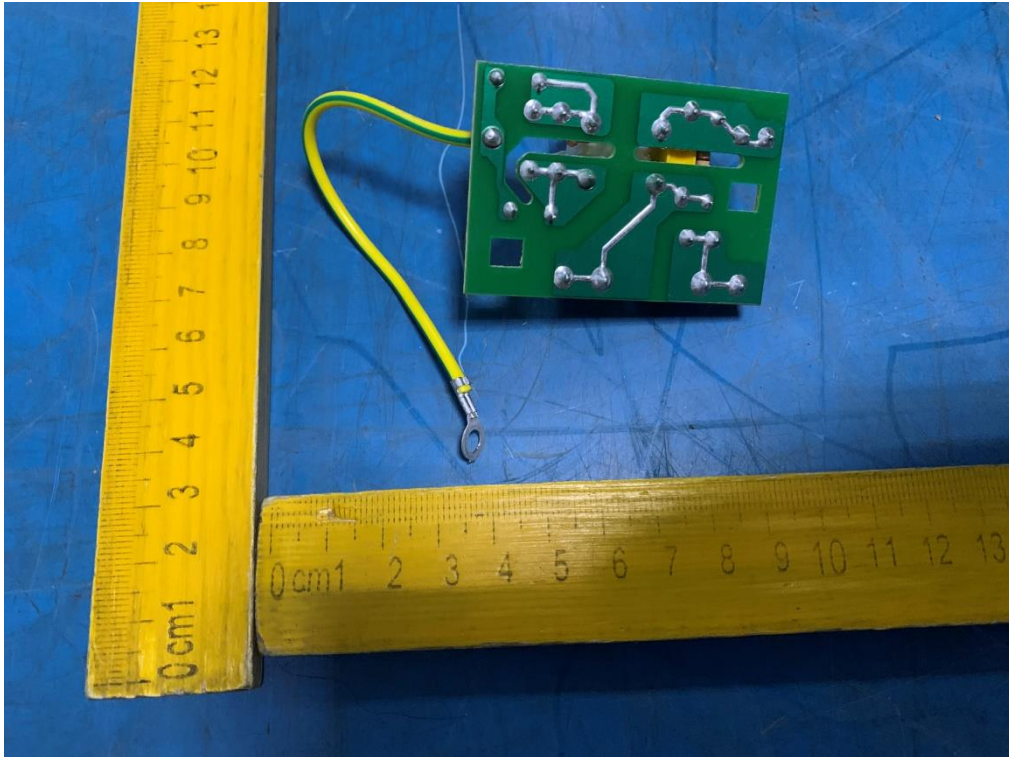
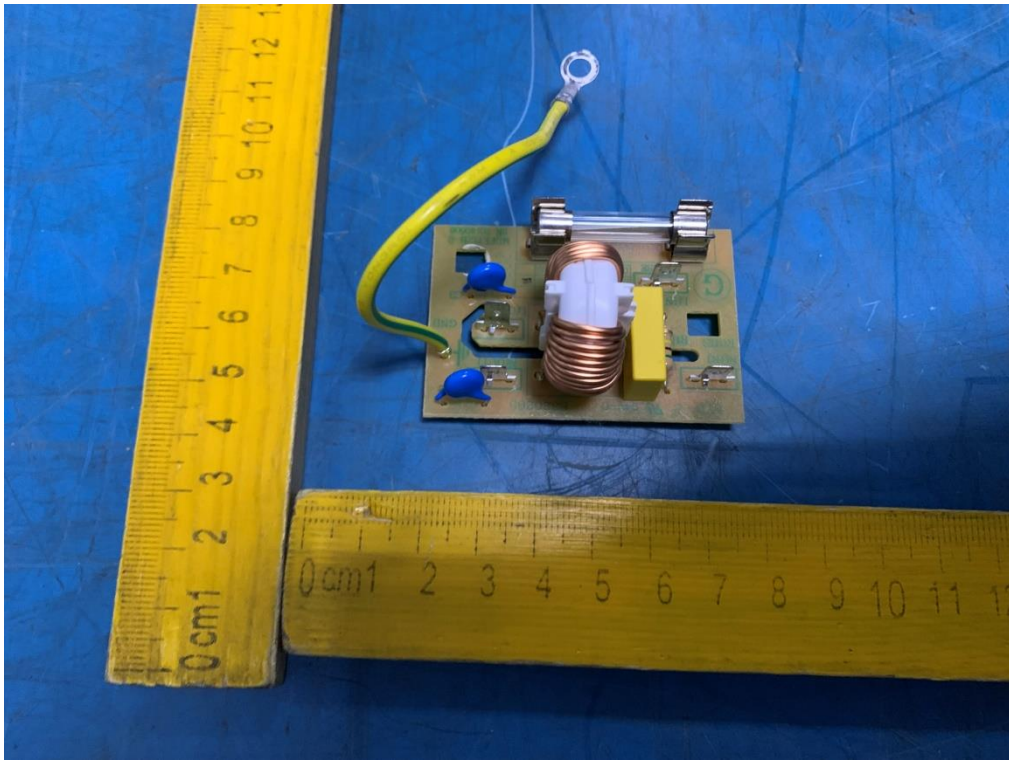


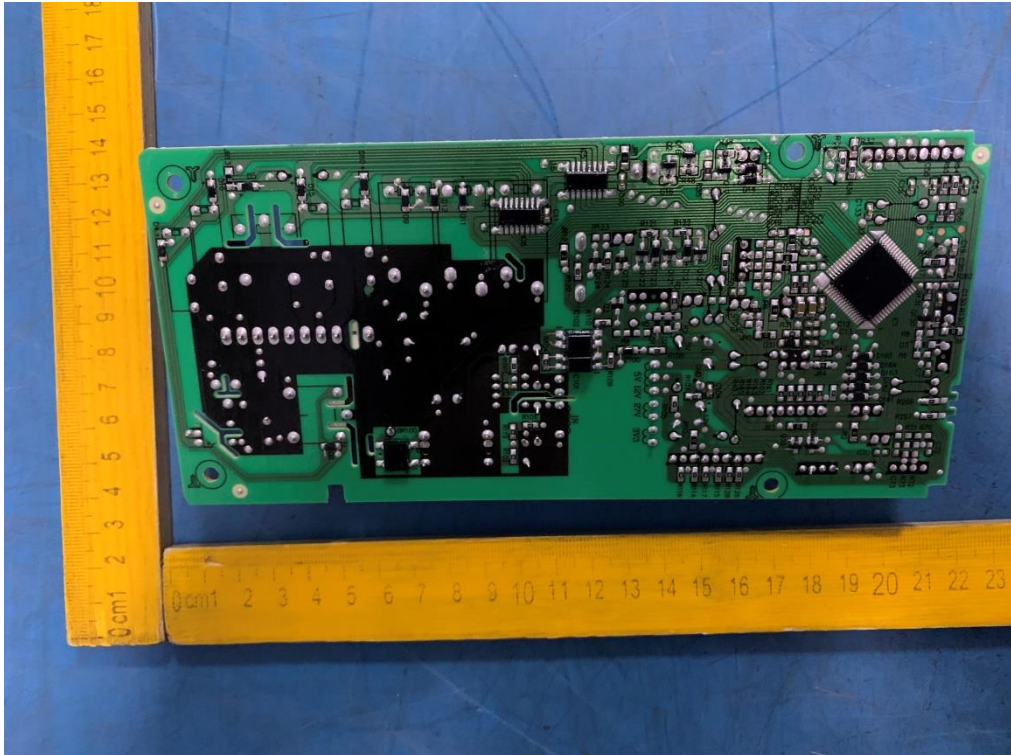
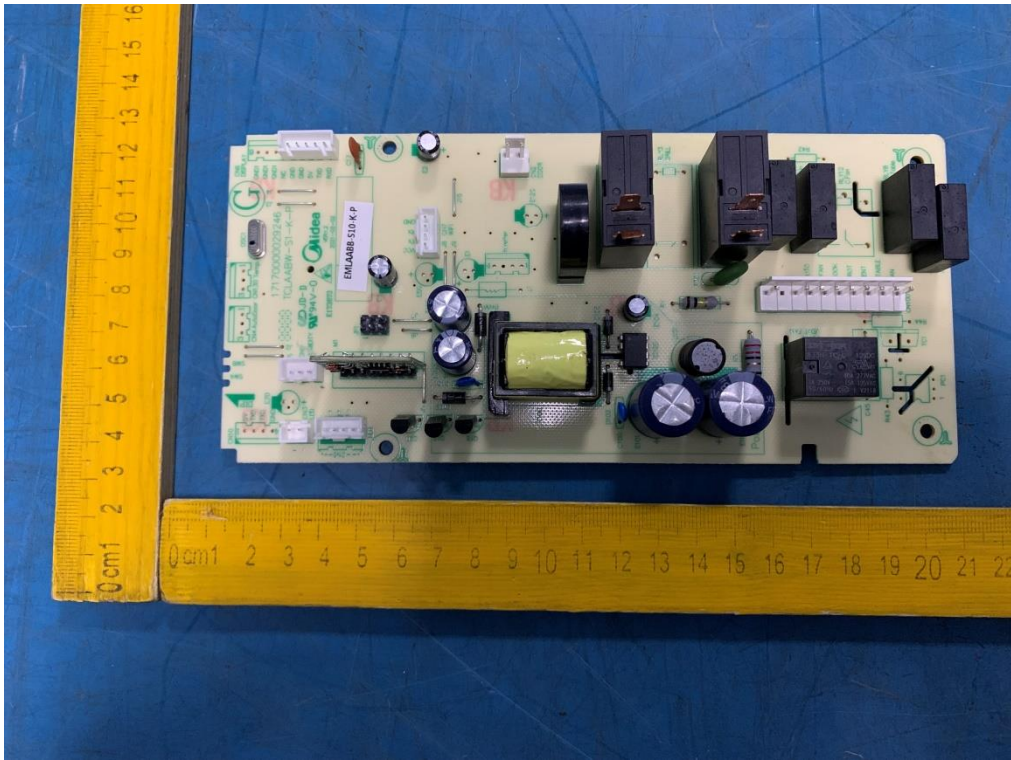


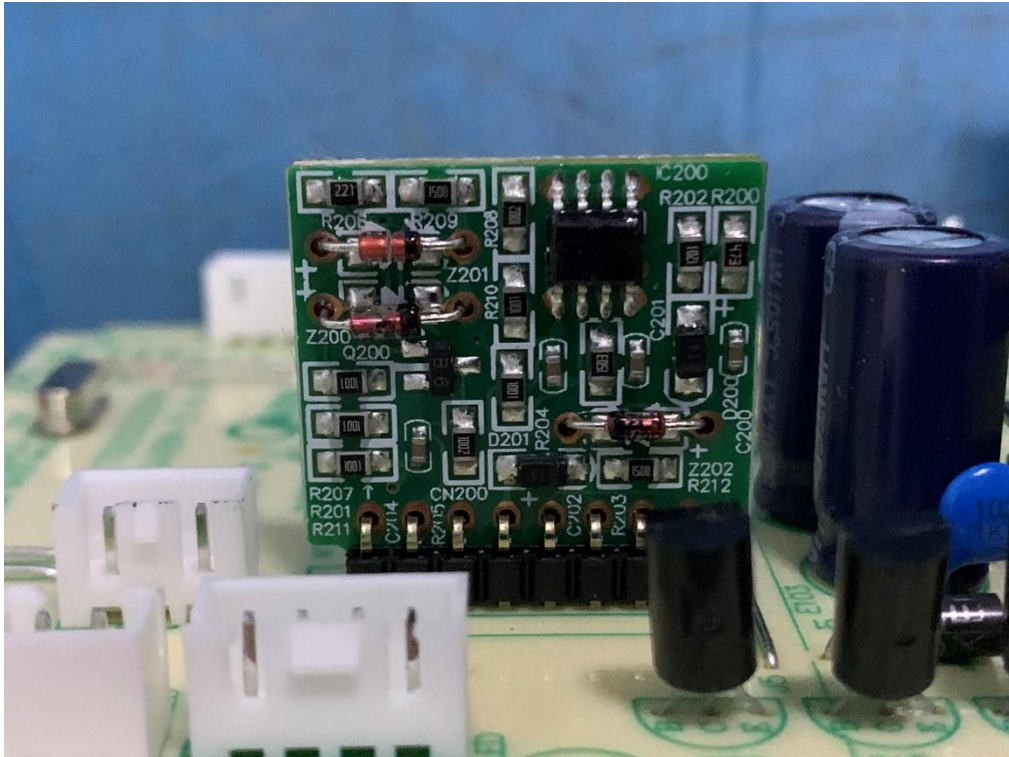


Internal Photo











*** End Of Report ***