



FCC PART 18 TEST REPORT

Report No.: 20230217G01184X-E
Product Name: Microwave Oven
Trade Name: Midea, HIGH POINTE
Model No.: EC028A##-S1R, EC028A***-S1R, EC028BAF, EC028KAF
FCC ID: VG8EC028AYY
Applicant: Guangdong Midea Kitchen Appliances Manufacturing Co., Ltd.
Received Date: 2023.02.28
Test Data: 2023.02.28-2023.03.09
Issued by: CCIC Southern Testing Co., Ltd.
Lab Location: Electronic Testing Building, No.43 Shahe Road, Xili Street, Nanshan District, Shenzhen, Guangdong, China
Tel: 86 755 26627338 **Fax:** 86 755 26627238

This test report consists of **30** pages in total. It may be duplicated completely for legal use with the approval of the applicant. It should not be reproduced except in full, without the written approval of our laboratory. The client should not use it to claim product endorsement by CCIC-SET. The test results in the report only apply to the tested sample. The test report shall be invalid without all the signatures of testing engineers, reviewer and approver. Any objections must be raised to CCIC-SET within 15 days since the date when the report is received. It will not be taken into consideration beyond this limit.



Test Report

Product Name..... Microwave Oven

Model No. EC028A##-S1R, EC028A***-S1R, EC028BAF, EC028KAF

Trade name Midea, HIGH POINTE

Applicant..... Guangdong Midea Kitchen Appliances Manufacturing Co., Ltd.

Applicant Address..... No.6, Yong An Road, Beijiao, Shunde, Foshan, China

Manufacturer Guangdong Midea Kitchen Appliances Manufacturing Co., Ltd.

Manufacturer Address No.6, Yong An Road, Beijiao, Shunde, Foshan, China

Test Standards 47 CFR Part 18
47 CFR Part 15 Subpart B

Test Result..... PASS

Tested by Ruihong Xie
Ruihong Xie Test Engineer 2023.03.09

Reviewed by Chris You
Chris You Senior Engineer 2023.03.09

Approved by Hou Tao
Hou Tao, Manager 2023.03.09



TABLE OF CONTENTS

1.	GENERAL INFORMATION	5
1.1	GENERAL DESCRIPTION OF EUT	5
1.2	Test Standards and Results.....	6
1.3	Facilities and Accreditations.....	7
1.3.1	Facilities	7
1.3.2	Test Environment Conditions.....	7
1.3.3	Measurement Uncertainty	7
2.	EQUIPMENTS LIST	8
3.	EMC EMISSION TEST.....	9
3.1	Test Procedure.....	9
3.1.1	Frequency For Normal Voltage	9
3.1.2	Frequency For Line Voltage.....	9
3.1.3	Measurement data	10
3.2	RADIATION HAZARD TEST.....	10
3.2.1	Test Setup	10
3.2.2	Limit.....	10
3.2.3	Test results.....	10
3.3	RF OUTPUT POWER MEASUREMENT	11
3.3.1	Test Standard.....	11
3.3.2	EUT Operating mode	11
3.3.3	Test Data.....	11
4.	CONDUCTED EMISSION	12
4.1.1	Conducted Emission Limit.....	12
4.1.2	Test Procedure.....	12
4.1.3	Test Setup.....	12
5.	RADIATED EMISSION	19
5.1.1	Radiated Emission Limits	19
5.1.2	Test Setup.....	19
5.1.3	Test Procedure.....	20
APPENDIX I: PHOTOGRAPHS OF EMC TEST CONFIGURATION		29



Change History		
Issue	Date	Reason for change
1.0	2023.03.09	First edition



1. GENERAL INFORMATION

1.1 GENERAL DESCRIPTION OF EUT

EUT Name : Microwave Oven
 Trade Name..... : Midea, HIGH POINTE
 Model..... : EC028A##-S1R, EC028A***-S1R, EC028BAF, EC028KAF
 model designations as follows:
 E: Film type keypad;
 C: Microwave + Grill + Convection function;
 028: “0” indicates the microwave output power is 1000W, “28” indicates cavity capacity is 28 liters;
 A: indicates the design No.
 ## or ***: "#", "*" may be 0~9, A~Z or blank, stands for different appearance;
 -S: Indicate Stainless Steel Cavity;
 1: Void for small change;
 R: Built in.
 Two customer models “EC028BAF, EC028KAF” with trade mark as “HIGH POINTE” which is identical to Midea models “EC028A##-S1R” except for model number and trade mark. Model of EC028AD7-S1R was selected for final testing.

Power Supply : 120V AC/60Hz
 Rated input Power(microwave): 1500W
 Rated output Power(microwave): 1000W
 Input Convection Power..... : 1450W
 Input Heater Watts Grill Power: 1150W
 Frequency : 2450MHz (Class B/Group 2)
 Magnetron Model..... : 2M319J
 Magnetron Manufacturer ... : WITOL
 Description of Support Units: -Load for power output measurement: 1000 milliliters of water in the beaker located in the center of the oven.
 -Load for frequency measurement: 1000 milliliters of water in the beaker located in the center of the oven.
 -Load for measurement of radiation on second and third harmonic: Two loads, one of 700 and the other of 300 milliliters, of water are used. Each load is tested both with the beaker located in the center of the oven and with it in the right front corner.



-Load for all other measurements: 700 milliliters of water, with the beaker located in the center of the oven.

Note 1: The EUT have the following typical setups during the test:

Setup1: Microwave heating mode (According to FCC PART 18);

Setup2: Grill mode (According to FCC PART 15B, digital device);

Setup3: Convection mode (According to FCC PART 15B, digital device).

Note 2: For a more detailed description, please refer to Specification or User's Manual supplied by the applicant and/or manufacturer.

1.2 Test Standards and Results

The objective of the report is to perform testing according to 47 CFR Part 18:

No.	Identity	Document Title
1	47 CFR Part 18	Radio Frequency Devices
2	47 CFR Part 15 Subpart B	Radio Frequency Devices

Test detailed items/section required by FCC rules and results are as below:

Emission			
Standard	Item	Class / Severity	Result
47 CFR PART 18	Conducted Emission (150 kHz to 30 MHz)	18.307(b)	PASS
	Radiated Emission (30 MHz to 1 GHz)	18.305(b)	PASS
47 CFR PART 15	Conducted Emission (150 kHz to 30 MHz)	15.107	PASS
	Radiated Emission (30 MHz to 1 GHz)	15.109	PASS



1.3 Facilities and Accreditations

1.3.1 Facilities

CNAS-Lab Code: L1659

CCIC-SET is a third-party testing organization accredited by China National Accreditation Service for Conformity Assessment (CNAS) according to ISO/IEC 17025. The accreditation certificate number is L1659.

FCC-Registration No.: CN1283

CCIC Southern Testing Co., Ltd EMC Laboratory has been registered and fully described in a report filed with the FCC (Federal Communications Commission). The acceptance letter from the FCC is maintained in our files. Designation Number: CN1283, valid time is until April 19th, 2023.

ISED Registration: 11185A-1

CCIC Southern Testing Co., Ltd. EMC Laboratory has been registered by Certification and Engineering Bureau of Industry Canada for the performance of radiated measurements with Registration No. 11185A-1 on Aug. 04, 2016, valid time is until April 19th, 2023.

A2LA Code: 5721.01

CCIC-SET is a third-party testing organization accredited by A2LA according to ISO/IEC 17025. The accreditation certificate number is 5721.01.

1.3.2 Test Environment Conditions

During the measurement, the environmental conditions were within the listed ranges:

Temperature (°C):	15°C- 35°C
Relative Humidity (%):	25% -75%
Atmospheric Pressure (kPa):	86kPa-106kPa

1.3.3 Measurement Uncertainty

The uncertainty is calculated using the methods suggested in the "Guide to the Expression of Uncertainty in Measurement" (GUM) published by ISO.

Uncertainty of Conducted Emission:	Uc = 3.2 dB (k=2)
Uncertainty of Radiated Emission:(30MHz~1GHz)	Uc = 5.8 dB (k=2)
Uncertainty of Radiated Emission:(1~18GHz)	Uc = 5.1 dB (k=2)



2. EQUIPMENTS LIST

A. Equipment List:

Description	Manufacturer	Model	Serial No.	Calibration Date	Calibration Due. Date
Test Receiver	KEYSIGHT	ESR3	A181103297	2022.06.24	2023.05.19
LISN	ROHDE&SCHWARZ	NSLK 8127	A210803670	2022.08.10	2023.07.19
Shield Room	Xinju Electronics	L9000*W4500* H3100	A181003230	2021.09.05	2024.07.29
EMI Test Receiver	ROHDE&SCHWARZ	ESIB7	A0501375	2022.05.23	2023.04.17
Broadband Ant.	ETC	MCTD2786	A150402240	2021.03.05	2024.03.03
3M Anechoic Chamber	Albatross	SAC-3MAC 9*6*6m	A0412375	2019.03.26	2023.03.25
EMI Test Receiver	ROHDE&SCHWARZ	ESW26	A180502935	2022.08.01	2023.07.19
5M Anechoic Chamber	Albatross	SAC-5MAC 12.8x6.8x6.4m	A0304210	2021.03.03	2023.03.24
EMI Horn Ant.	ETC	1209	A150402241	2021.01.02	2024.01.01
Spectrum Analyzer	ROHDE&SCHWARZ	ESW26	A180502935	2022.08.02	2023.07.20



3. EMC EMISSION TEST

3.1 Test Procedure

Test Requirement: 47 CFR PART 18

Test Method: FCC/OST MP-5:1986

Power Supply: AC 120V/ 60Hz

Frequency Range: 2400-2500MHz

Detector: Peak

Limit: ISM equipment may be operated at any frequency above 9KHz and the frequency band 2400-2500MHz is allocated for use by ISM equipment

ISM frequency	Tolerance
6.78 MHz	±15.0 kHz
13.56 MHz	±7.0 kHz
27.12 MHz	±163.0 kHz
40.68 MHz	±20.0 kHz
915 MHz	±13.0 MHz
2,450 MHz	±50.0 MHz
5,800 MHz	±75.0 MHz
24,125 MHz	±125.0 MHz
61.25 GHz	±250.0 MHz
122.50 GHz	±500.0 MHz
245.00 GHz	±1.0 GHz

3.1.1 Frequency For Normal Voltage

The operating frequency was measured using a spectrum analyzer. Starting with the EUT at room temperature, a 1000mL water load was placed in the center of the oven and the oven was operated at maximum output power. The fundamental operating frequency was monitored until the water load was reduced to 20 percent of the original load.

3.1.2 Frequency For Line Voltage

The EUT was operated / warmed by at least 10 minutes of use with a 1000mL water load at room temperature at the beginning of the test. Then the operating frequency was monitored as the input voltage was varied between 80 and 125 percent of the nominal rating.



3.1.3 Measurement data

Operating Mode	Frequency (MHz)
Normal Voltage	2437.4-2461.5
Line Voltage	2442.3-2468.5

3.2 RADIATION HAZARD TEST

3.2.1 Test Setup

The EUT was set-up according to the FCC MP-5 and FCC Part 18 for radiation Hazard measurement. The measurement was using a microwave leakage meter to measure the radiation leakage in the as-received condition with the oven door closed A 700mL water load in a breaker was located in the center of the oven and the microwave oven was set to maximum power. While the oven operating, the microwave meter will check the leakage and then record the maximum leakage.

3.2.2 Limit

A maximum of 1.0mW/cm² is allowed in according with the applicable FCC standards.

3.2.3 Test results

There was no microwave leakage exceeding a power level of 0.51 m W/cm² Observed at any point 5cm or more from the external surface of the oven.



3.3 RF OUTPUT POWER MEASUREMENT

3.3.1 Test Standard

Test Requirement	47 CFR PART 18
Test Method	FCC/OST MP-5:1986
Power Supply	AC120/60Hz

3.3.2 EUT Operating mode

Test the EUT in microwave mode with full power.

3.3.3 Test Data

Mass of Water(g)	Mass of the container(g)	ambient temperature (°C)	Initial temperature(°C)	Final temperature(°C)	Heating Time(S)	Output Power (Watt)
1000	280	21.4	9.8	30.3	120	736.19

Formula:

$$P = \frac{4.2 \times m_w(T_2 - T_1) + 0.9 \times m_c(T_2 - T_0)}{t}$$

P is the microwave power output, in watts

M_w is the mass of the water, in grams

M_c is the mass of the container, in grams

T₀ is the ambient temperature, in degrees Celsius

T₁ is Initial temperature of the water, in degrees Celsius

T₂ is final temperature of the water, in degrees Celsius

T is heating time, in seconds, excluding the magnetron filament heating-up time

4. CONDUCTED EMISSION

4.1.1 Conducted Emission Limit

Frequency range (MHz)	Conducted Limit (dB μ V)	
	Quasi-peak	Average
0.15 - 0.50	66 to 56	56 to 46
0.50 - 5	56	46
5 - 30	60	50

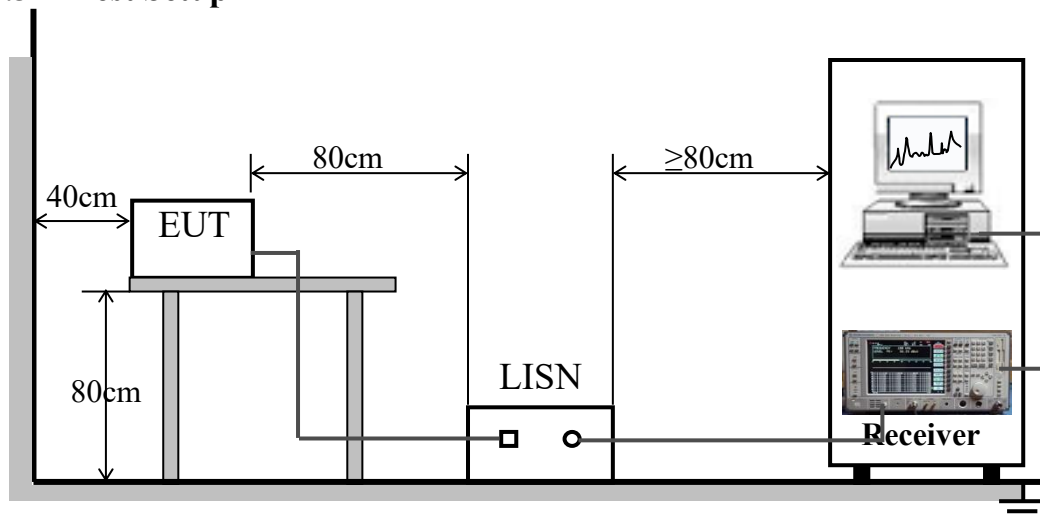
Note:

- The limit decreases linearly with the logarithm of the frequency in the range 0.05 MHz to 0.5 MHz
- The lower limit is applicable at the transition frequency.

4.1.2 Test Procedure

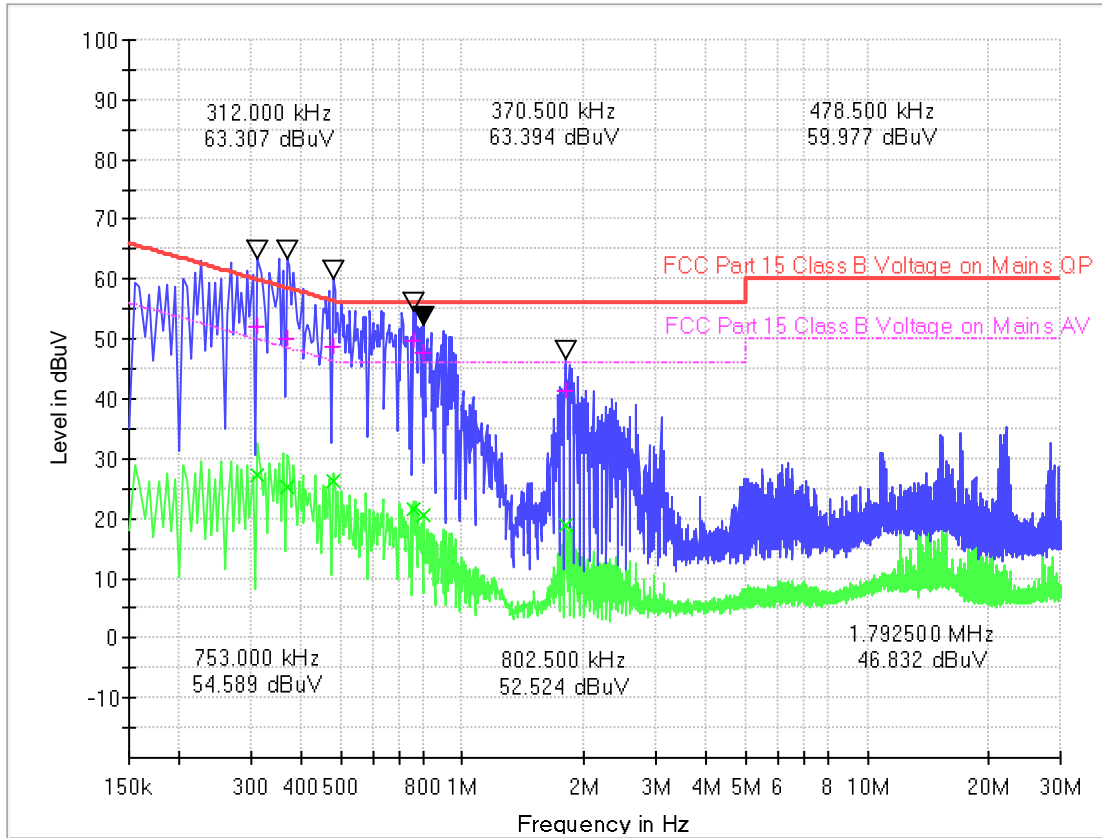
The EUT is placed on a 0.8m high insulating table, which stands on the grounded conducting floor, and keeps 0.4m away from the grounded conducting wall. The EUT is connected to the power mains through a LISN which provides 50 Ω /50 μ H of coupling impedance for the measuring instrument. The Common Antenna is used for the call between the EUT and the System Simulator (SS). A Pulse Limiter is used to protect the measuring instrument. The factors of the whole test system are calibrated to correct the reading.

4.1.3 Test Setup



A. Test Result:

Mains terminal disturbance voltage, Setup1, L phase

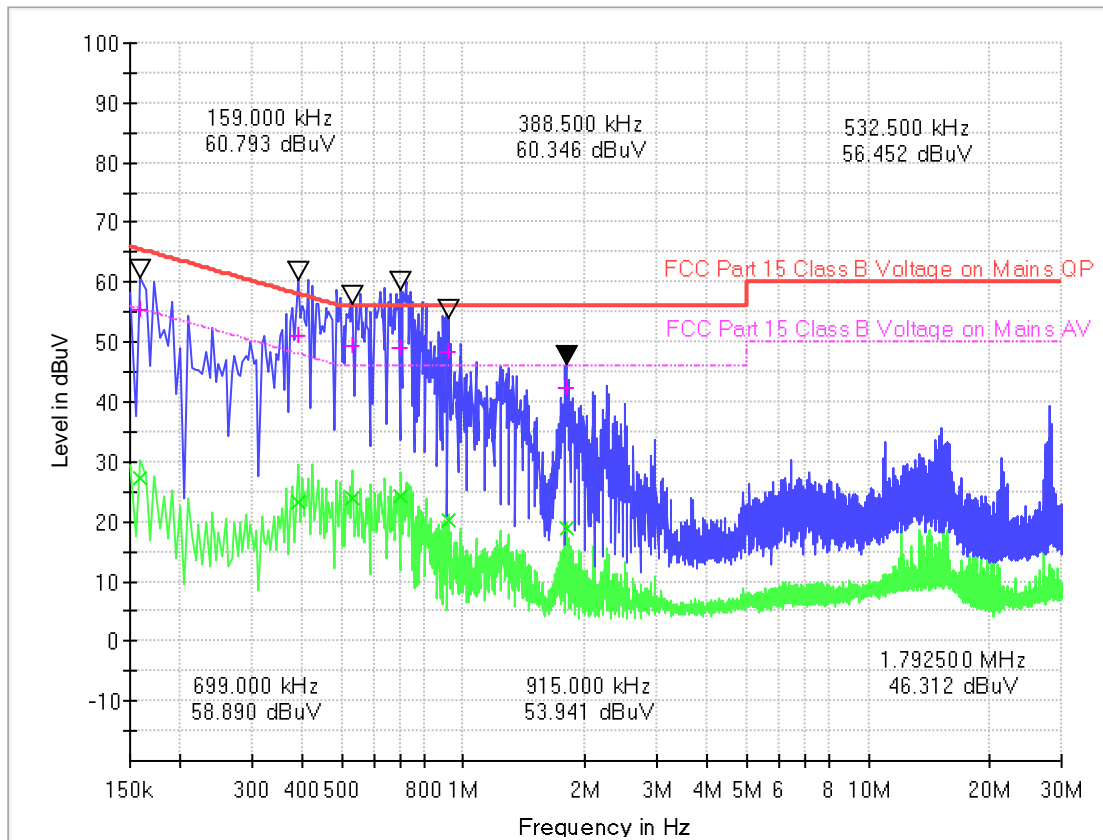


(Plot A: L Phase)

Frequency (MHz)	Quasi Peak (dB μ V)	Average (dB μ V)	Cable Loss (dB)	Corr. (dB)	Margin - QPK	Limit - QPK	Margin - AV	Limit - AV (dB μ V)
0.312000	51.98	27.20	0.1	10.3	7.94	59.9	22.72	49.9
0.370500	49.92	25.39	0.1	10.3	8.57	58.5	23.10	48.5
0.478500	48.58	26.30	0.1	10.2	7.79	56.4	20.07	46.4
0.753000	49.86	21.72	0.1	10.3	6.14	56.0	24.28	46.0
0.802500	47.85	20.48	0.2	10.3	8.15	56.0	25.52	46.0
1.792500	41.31	18.99	0.2	10.2	14.69	56.0	27.01	46.0



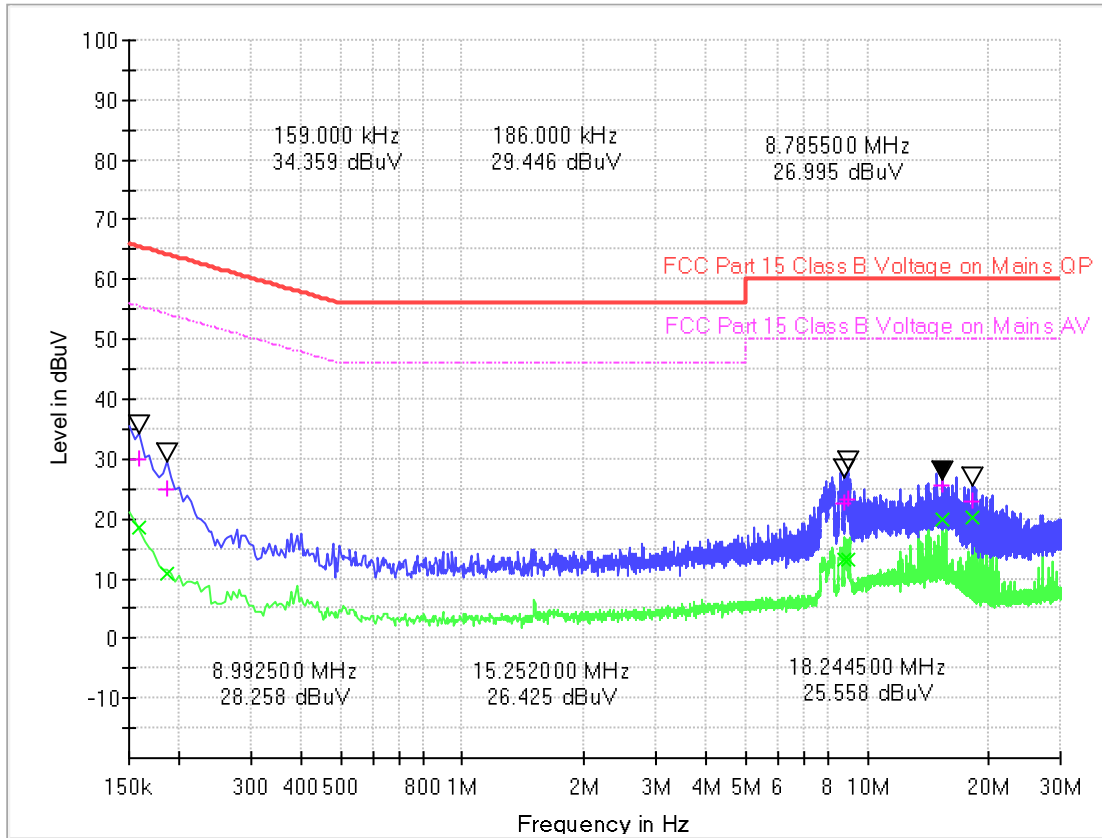
Mains terminal disturbance voltage, Setup 1, N phase



(Plot B: N Phase)

Frequency (MHz)	Quasi Peak (dB μ V)	Average (dB μ V)	Cable Loss (dB)	Corr. (dB)	Margin - QPK	Limit - QPK	Margin - AV	Limit - AV (dB μ V)
0.159000	55.38	27.22	0.1	10.3	10.14	65.5	28.30	55.5
0.388500	51.13	23.39	0.1	10.3	6.97	58.1	24.71	48.1
0.532500	49.49	23.86	0.1	10.2	6.51	56.0	22.14	46.0
0.699000	49.01	24.39	0.1	10.2	6.99	56.0	21.61	46.0
0.915000	48.22	20.26	0.2	10.2	7.78	56.0	25.74	46.0
1.792500	42.36	18.91	0.2	10.2	13.64	56.0	27.09	46.0

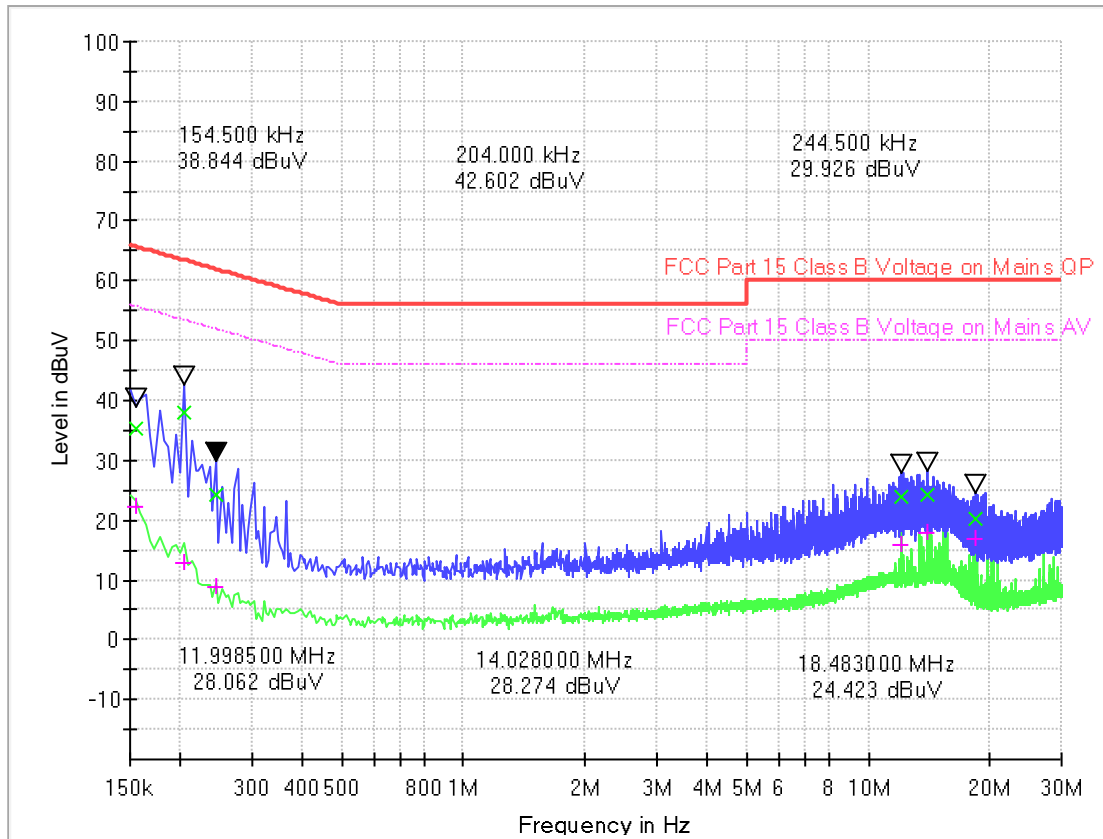
Mains terminal disturbance voltage, Setup2, L phase



(Plot C: L Phase)

Frequency (MHz)	Quasi Peak (dB μ V)	Average (dB μ V)	Cable Loss	Corr. (dB)	Margin - QPK	Limit - QPK	Margin - AV	Limit - AV (dB μ V)
0.159000	30.01	18.49	0.1	10.3	35.51	65.5	37.03	55.5
0.186000	24.78	10.97	0.1	10.3	39.43	64.2	43.24	54.2
8.785500	22.48	13.11	0.5	10.5	37.52	60.0	36.89	50.0
8.992500	23.23	13.28	0.5	10.5	36.77	60.0	36.72	50.0
15.25200	25.42	19.88	0.5	11.0	34.58	60.0	30.12	50.0
18.24450	23.01	20.35	0.5	11.3	36.99	60.0	29.65	50.0

Mains terminal disturbance voltage, Setup 2, N phase

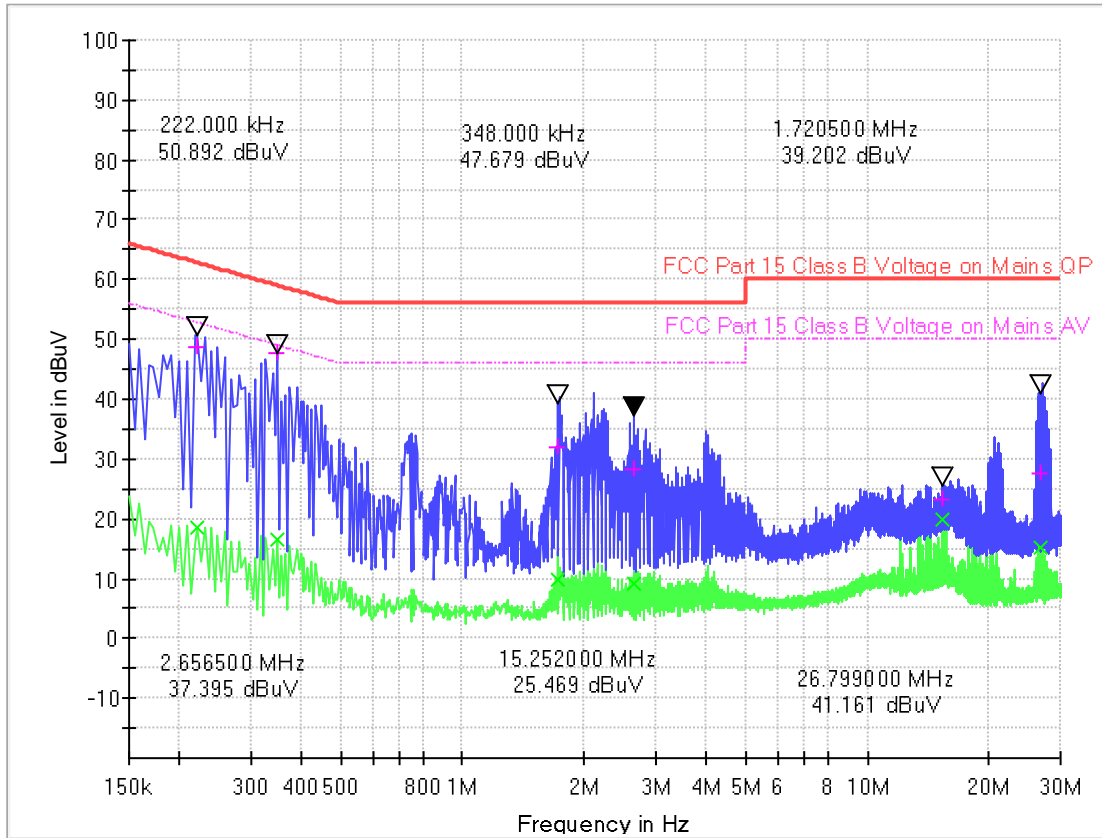


(Plot D: N Phase)

Frequency (MHz)	Quasi Peak (dB μ V)	Average (dB μ V)	Cabel Loss (dB)	Corr. (dB)	Margin - QPK	Limit - QPK	Margin - AV	Limit - AV (dB μ V)
0.154500	35.33	22.23	0.1	10.3	30.42	65.8	33.52	55.8
0.204000	37.84	12.83	0.1	10.3	25.61	63.4	40.62	53.4
0.244500	24.33	8.68	0.1	10.3	37.61	61.9	43.26	51.9
11.998500	23.83	15.91	0.5	10.7	36.17	60.0	34.09	50.0
14.028000	24.18	17.81	0.5	10.9	35.82	60.0	32.19	50.0
18.483000	20.27	16.98	0.5	11.1	39.73	60.0	33.02	50.0



Mains terminal disturbance voltage, Setup3, L phase

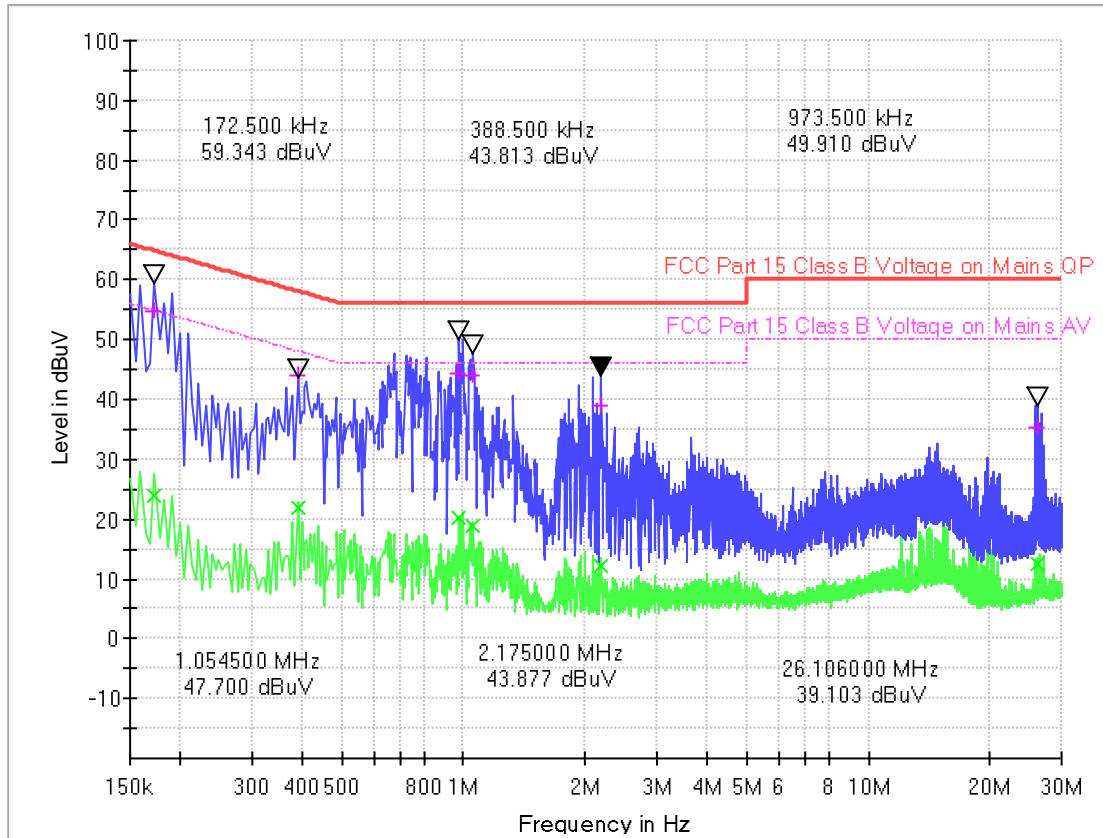


(Plot E: L Phase)

Frequency (MHz)	Quasi Peak (dB μ V)	Average (dB μ V)	Cabel Loss (dB)	Corr. (dB)	Margin - QPK	Limit - QPK	Margin - AV	Limit - AV (dB μ V)
0.222000	48.58	18.56	0.1	10.3	14.16	62.7	34.18	52.7
0.348000	47.55	16.67	0.1	10.3	11.46	59.0	32.34	49.0
1.720500	32.01	9.72	0.2	10.2	23.99	56.0	36.28	46.0
2.656500	28.19	9.07	0.2	10.1	27.81	56.0	36.93	46.0
15.252000	23.24	19.99	0.3	11.0	36.76	60.0	30.01	50.0
26.799000	27.59	15.16	0.3	11.8	32.41	60.0	34.84	50.0



Mains terminal disturbance voltage, Setup 3, N phase



(Plot F: N Phase)

Frequency (MHz)	QuasiPeak (dB μ V)	CAverage (dB μ V)	Cabel Loss (dB)	Corr. (dB)	Margin - QPK	Limit - QPK	Margin - AV	Limit - AV (dB μ V)
0.172500	54.63	23.92	0.1	10.3	10.21	64.8	30.92	54.8
0.388500	44.18	21.77	0.1	10.3	13.92	58.1	26.33	48.1
0.973500	44.38	20.32	0.2	10.2	11.62	56.0	25.68	46.0
1.054500	43.96	18.77	0.2	10.2	12.04	56.0	27.23	46.0
2.175000	38.84	12.33	0.2	10.2	17.16	56.0	33.67	46.0
26.106000	35.24	12.59	0.5	11.8	24.76	60.0	37.41	50.0

Test Result: PASS

5. RADIATED EMISSION

5.1.1 Radiated Emission Limits

- (a) ISM equipment operation on a frequency specified in §18.301 is permitted unlimited radiated energy in the band specified for that frequency.
- (b) The field strength levels of emissions which lie outside the bands specified in §18.301, unless otherwise indicated, shall not exceed the following:

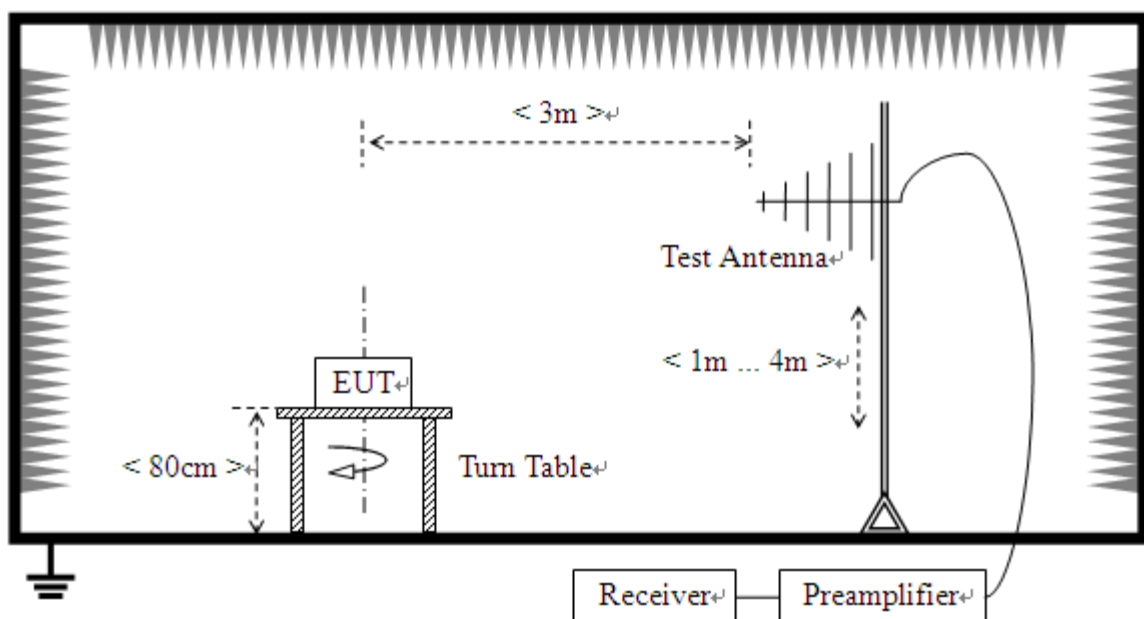
RF Power generated by equipment(watts)	Field strength limit(uV/m) @300m
Below 500	25
500or more	$25 * \text{SQRT}(\text{power}/500)$

Power =736.19W

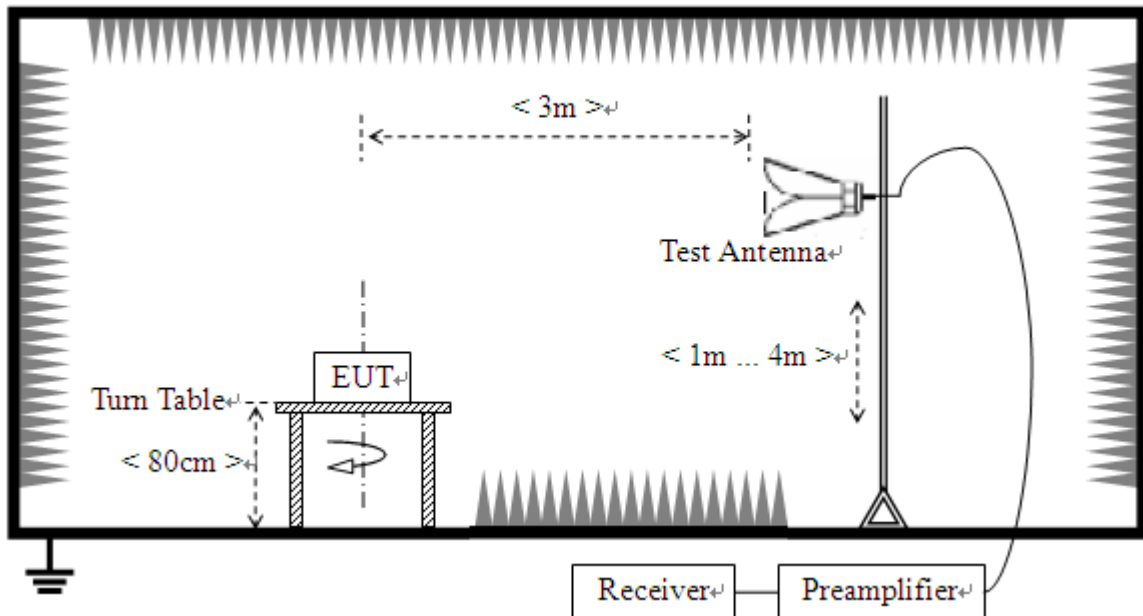
Limit= $20\lg(25 * \text{SQRT}(\text{power}/500)) + 20\lg(300/3)$ @ 3m distance.

5.1.2 Test Setup

For radiated emissions from 30MHz to 1GHz



For radiated emissions above 1GHz



5.1.3 Test Procedure

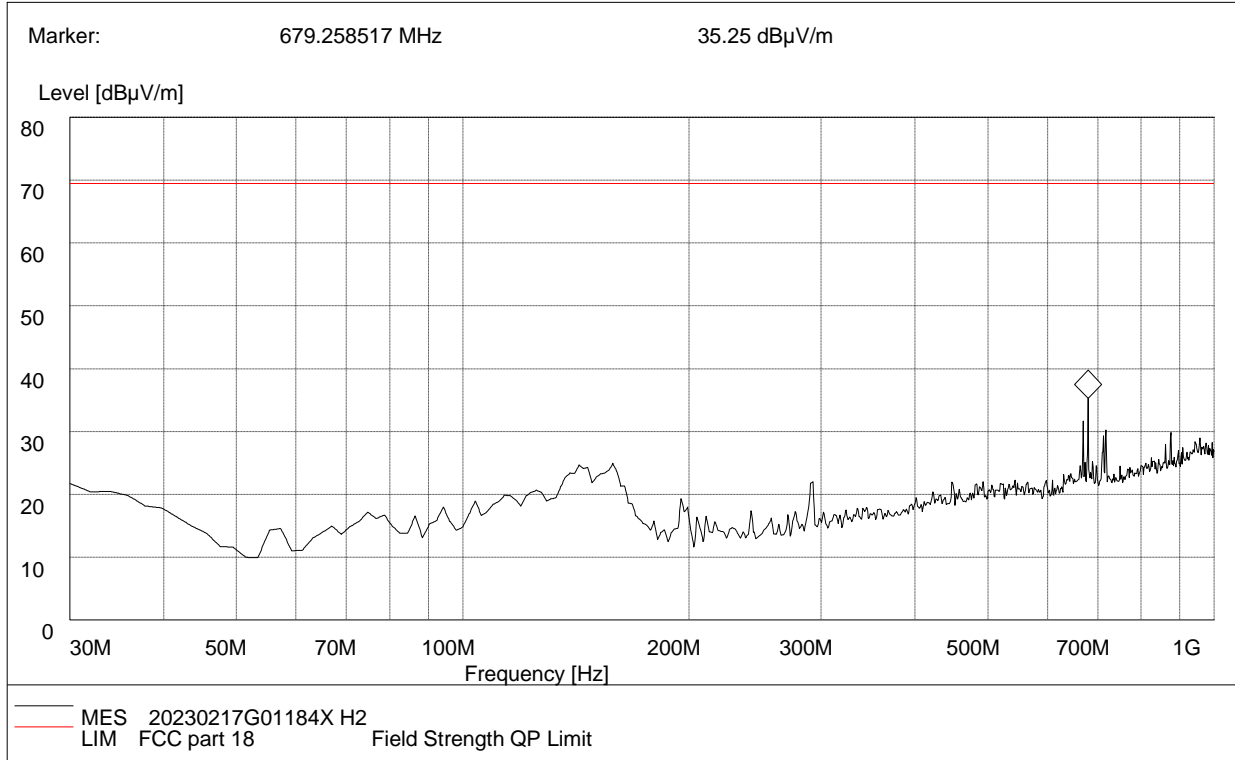
- The measuring distance of at 3 m shall be used for measurements at frequency up to 1GHz. For frequencies above 1GHz, any suitable measuring distance may be used.
- The EUT was placed on the top of a rotating table 0.8 meters above the ground at a 3 meter open area test site. The table was rotated 360 degrees to determine the position of the highest radiation.
- The height of the equipment or of the substitution antenna shall be 0.8 m; the height of the test antenna shall vary between 1 m to 4 m. Both horizontal and vertical polarizations of the antenna are set to make the measurement
- The initial step in collecting conducted emission data is a spectrum analyzer peak detector mode pre-scanning the measurement frequency range. Significant peaks are then marked and then Quasi Peak detector mode re-measured.
- If the Peak Mode measured value compliance with and lower than Quasi Peak Mode Limit, the EUT shall be deemed to meet QP Limits and then no additional QP Mode measurement performed.
- For the actual test configuration, please refer to the related Item –EUT Test Photos.

Note: Both horizontal and vertical antenna polarities were tested and performed pretest to three orthogonal axis. The worst case emissions were reported



Test Result:

Radiation disturbances, antenna polarization: Setup1, Horizontal

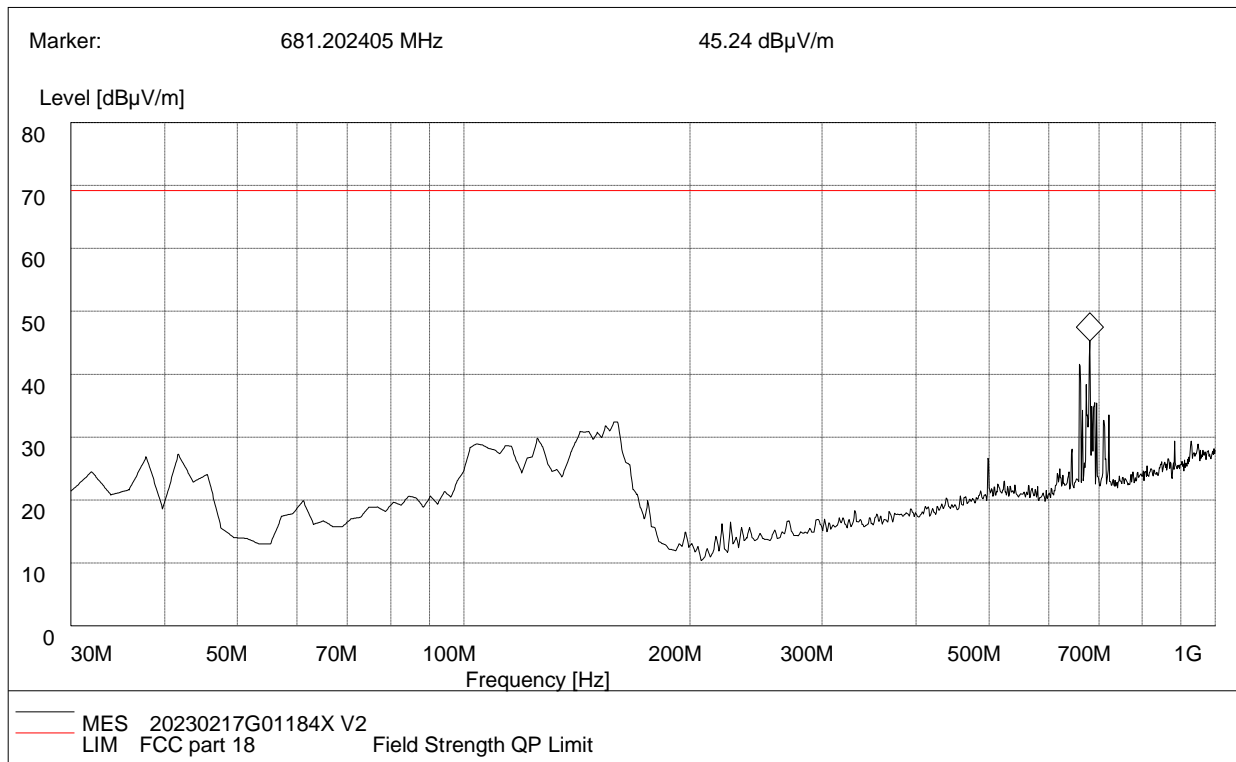


(Plot A: Test Antenna Horizontal 30M - 1G)

Frequency (MHz)	Quasi Peak (dBµV/m)	Bandwidth (kHz)	Antenna height (cm)	Limit (dBµV/m)	Margin (dB)	Antenna	Verdict
30.00	21.01	120.000	100.0	69.63	48.62	Horizontal	Pass
125.34	20.13	120.000	100.0	69.63	49.50	Horizontal	Pass
158.16	23.43	120.000	100.0	69.63	46.20	Horizontal	Pass
290.29	21.73	120.000	100.0	69.63	47.90	Horizontal	Pass
678.73	34.00	120.000	100.0	69.63	35.63	Horizontal	Pass
718.04	30.22	120.000	100.0	69.63	39.41	Horizontal	Pass



Radiation disturbances, antenna polarization: Setup1, Vertical

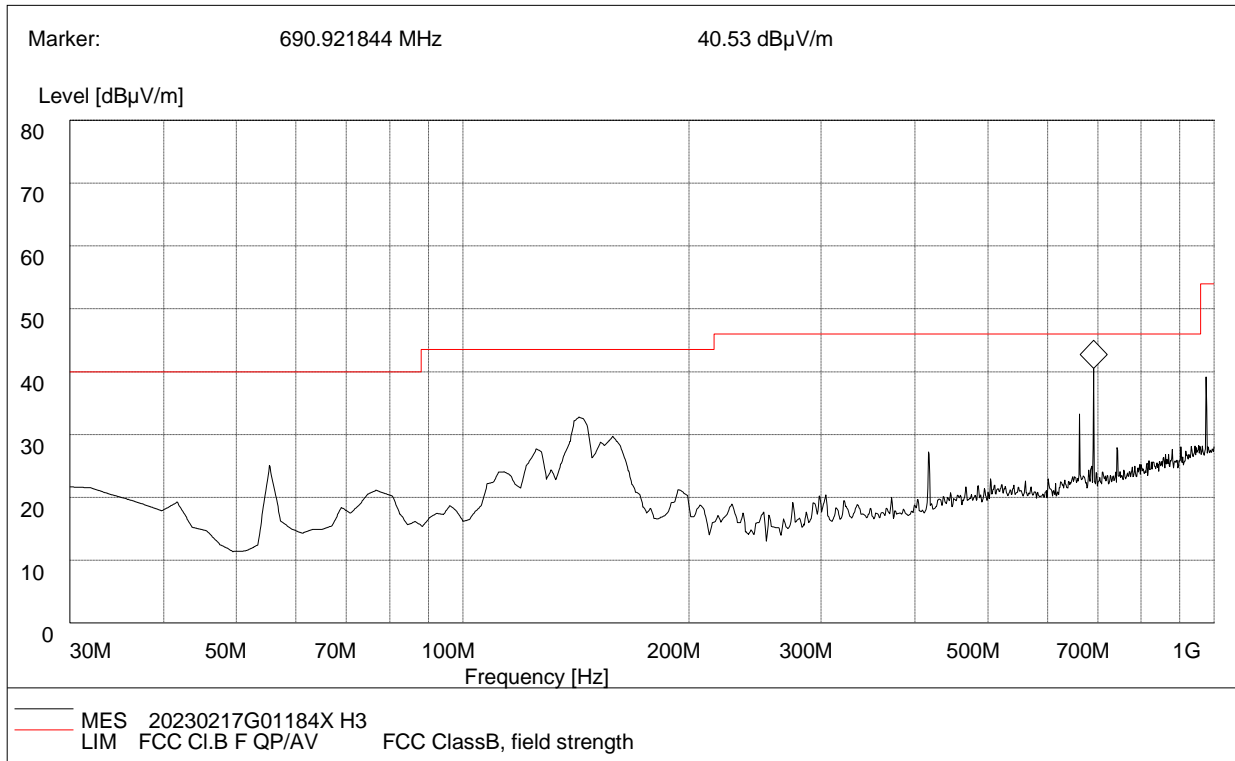


(Plot B: Test Antenna Vertical 30M - 1G)

Frequency (MHz)	Quasi Peak (dBµV/m)	Bandwidth (kHz)	Antenna height (cm)	Limit (dBµV/m)	Margin (dB)	Antenna	Verdict
41.06	26.73	120.000	100.0	69.63	42.90	Vertical	Pass
103.65	27.48	120.000	100.0	69.63	42.15	Vertical	Pass
144.43	30.00	120.000	100.0	69.63	39.63	Vertical	Pass
160.21	31.05	120.000	100.0	69.63	38.58	Vertical	Pass
659.09	41.00	120.000	100.0	69.63	28.63	Vertical	Pass
681.18	45.10	120.000	100.0	69.63	24.53	Vertical	Pass



Radiation disturbances, antenna polarization: Setup2, Horizontal

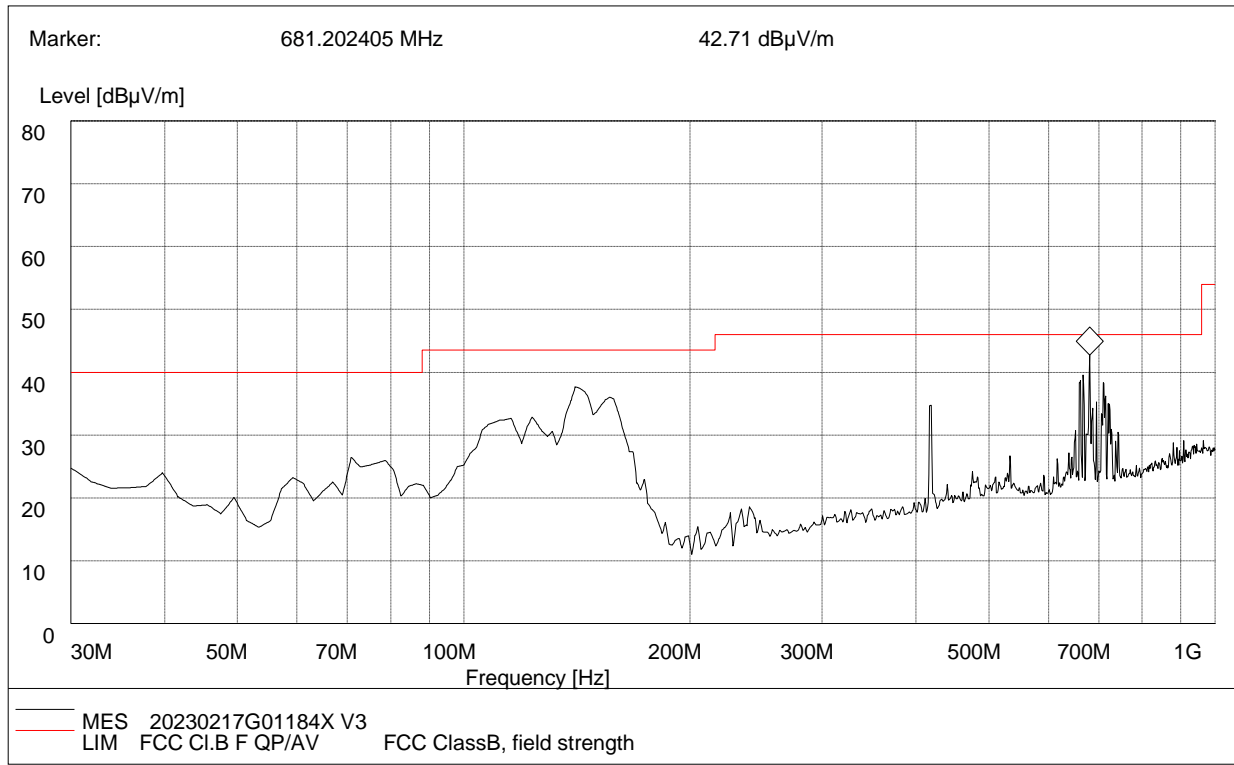


(Plot C: Test Antenna Horizontal30M - 1G)

Frequency (MHz)	Quasi Peak (dBµV/m)	Bandwidth (kHz)	Antenna height (cm)	Limit (dBµV/m)	Margin (dB)	Antenna	Verdict
30.00	21.00	120.000	100.0	40.00	19.00	Horizontal	Pass
55.34	24.73	120.000	100.0	40.00	15.27	Horizontal	Pass
142.19	31.09	120.000	100.0	43.50	12.41	Horizontal	Pass
158.58	28.69	120.000	100.0	43.50	14.81	Horizontal	Pass
661.26	32.38	120.000	100.0	46.00	13.62	Horizontal	Pass
690.17	40.54	120.000	100.0	46.00	5.46	Horizontal	Pass



Radiation disturbances, antenna polarization: Setup2, Vertical

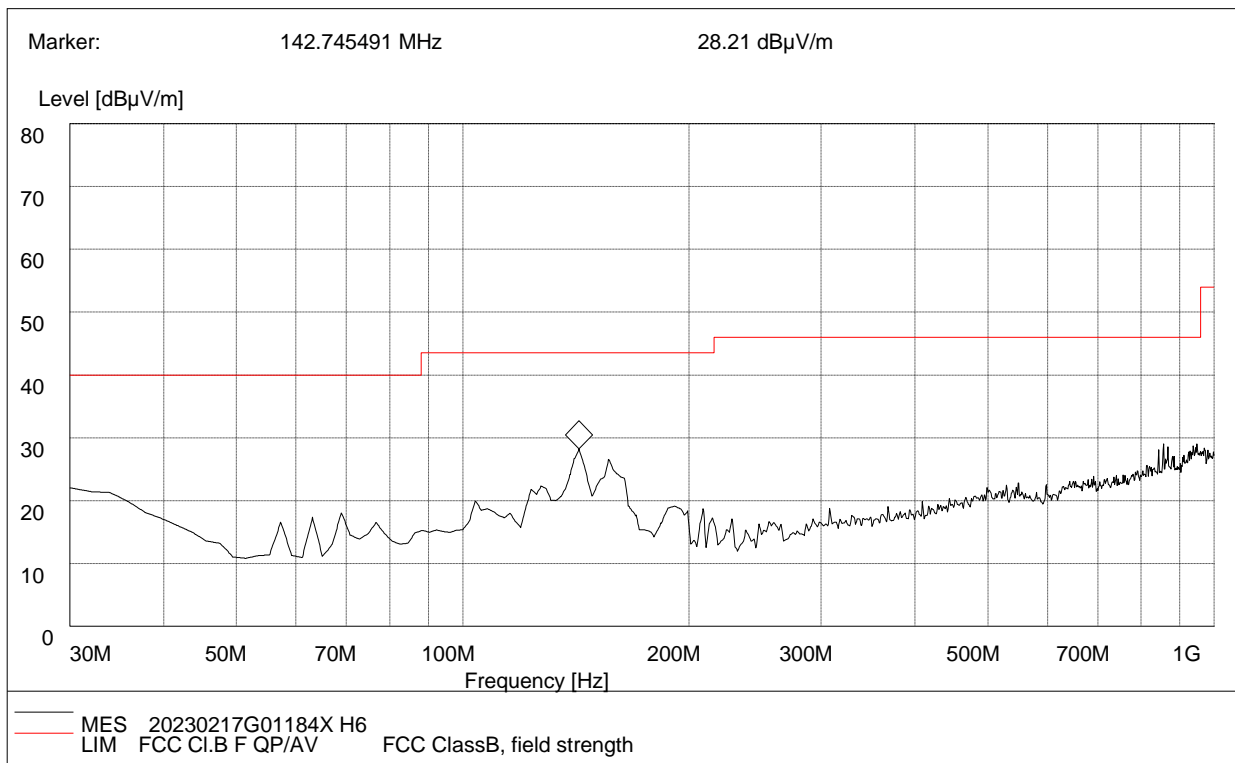


(Plot D: Test Antenna Vertical30M - 1G)

Frequency (MHz)	Quasi Peak (dB μ V/m)	Bandwidth (kHz)	Antenna height (cm)	Limit (dB μ V/m)	Margin (dB)	Antenna	Verdict
30.00	23.42	120.000	100.0	40.00	16.58	Vertical	Pass
70.39	25.53	120.000	100.0	40.00	14.47	Vertical	Pass
123.16	31.06	120.000	100.0	43.50	12.44	Vertical	Pass
142.77	37.25	120.000	100.0	43.50	6.25	Vertical	Pass
418.38	34.49	120.000	100.0	46.00	11.51	Vertical	Pass
681.19	42.35	120.000	100.0	46.00	3.65	Vertical	Pass



Radiation disturbances, antenna polarization: Setup3, Horizontal

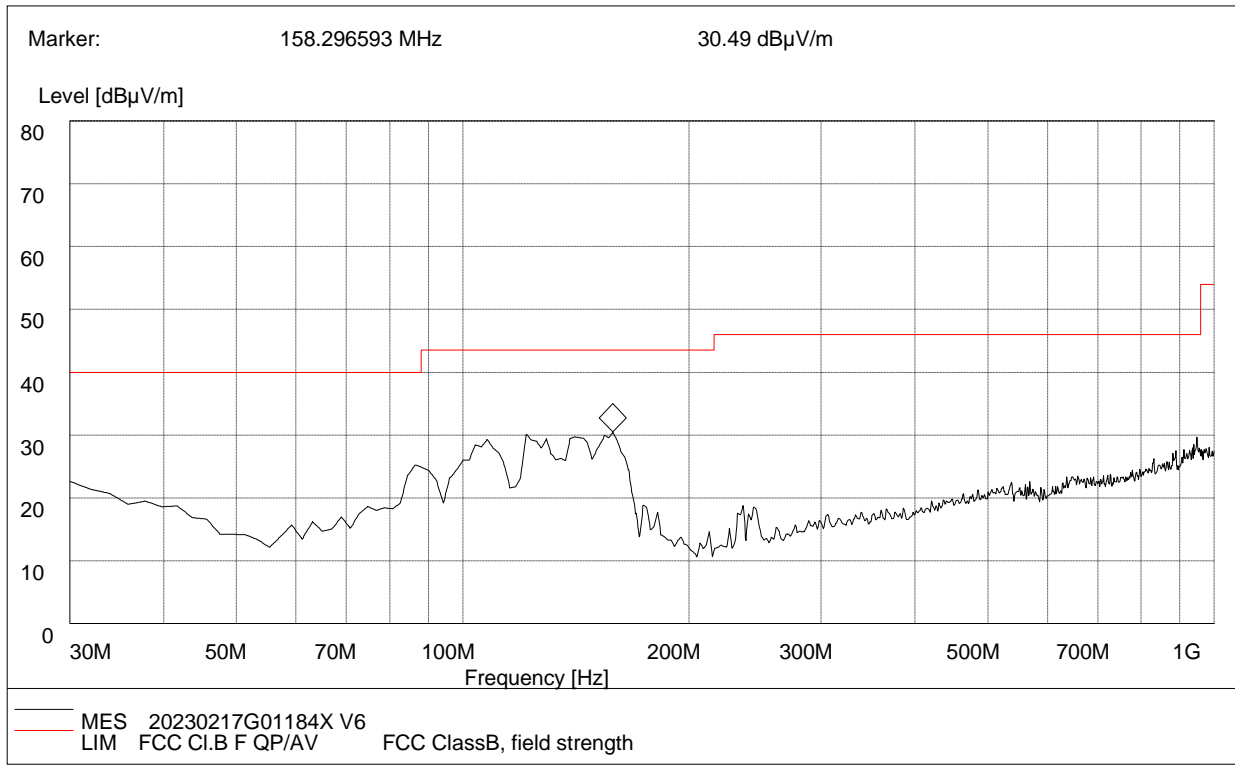


(Plot E: Test Antenna Horizontal30M - 1G)

Frequency (MHz)	Quasi Peak (dBµV/m)	Bandwidth (kHz)	Antenna height (cm)	Limit (dBµV/m)	Margin (dB)	Antenna	Verdict
31.00	20.19	120.000	100.0	40.00	19.81	Horizontal	Pass
33.35	21.39	120.000	100.0	40.00	18.61	Horizontal	Pass
127.15	23.21	120.000	100.0	43.50	20.29	Horizontal	Pass
142.59	28.40	120.000	100.0	43.50	15.10	Horizontal	Pass
856.26	27.28	120.000	100.0	46.00	18.72	Horizontal	Pass
867.08	27.02	120.000	100.0	46.00	18.98	Horizontal	Pass



Radiation disturbances, antenna polarization: Setup3, Vertical



(Plot F: Test Antenna Vertical30M - 1G)

Frequency (MHz)	Quasi Peak (dB μ V/m)	Bandwidth (kHz)	Antenna height (cm)	Limit (dB μ V/m)	Margin (dB)	Antenna	Verdict
31.00	21.24	120.000	100.0	40.00	18.76	Vertical	Pass
86.41	24.38	120.000	100.0	40.00	15.62	Vertical	Pass
107.18	29.50	120.000	100.0	43.50	14.00	Vertical	Pass
158.36	30.21	120.000	100.0	43.50	13.29	Vertical	Pass
657.25	27.41	120.000	100.0	46.00	18.59	Vertical	Pass
949.02	29.18	120.000	100.0	46.00	16.82	Vertical	Pass



Above 1GHz, Setup1

NO.	Freq. [MHz]	Level [dBμV/m]	Factor [dB]	Limit [dBμV/m]	Margin [dB]	Height [cm]	Angle [°]	Polarity
1	1871.47	50.51	-12.53	69.63	19.12	100	342	Horizontal
2	2436.86	52.09	-10.77	69.63	17.54	100	200	Horizontal
3	3686.67	56.07	-6.08	69.63	13.56	100	154	Horizontal
4	4711.18	57.17	-1.49	69.63	12.46	100	49+	Horizontal
5	7210.80	56.45	2.31	69.63	13.18	100	280	Horizontal
6	9208.80	58.68	3.81	69.63	10.95	100	50	Horizontal

NO.	Freq. [MHz]	Level [dBμV/m]	Factor [dB]	Limit [dBμV/m]	Margin [dB]	Height [cm]	Angle [°]	Polarity
1	1875.72	53.47	-12.49	69.63	16.16	100	34	Vertical
2	2526.13	54.14	-10.67	69.63	15.49	100	29	Vertical
3	4668.67	55.47	-1.59	69.63	14.16	100	227	Vertical
4	6777.19	57.38	2.00	69.63	12.25	100	210	Vertical
5	8197.05	58.79	3.71	69.63	10.84	100	334	Vertical
6	11389.60	58.86	5.18	69.63	10.77	100	19	Vertical

Above 1GHz, Setup2,3(See Remark 3)

NO.	Freq. [MHz]	Level [dBμV/m]	Limit [dBμV/m]	Margin [dB]	Height [cm]	Angle [°]	Polarity
1	--	--	--	--	--	--	Vertical
2	--	--	--	--	--	--	Vertical
3	--	--	--	--	--	--	Vertical
4	--	--	--	--	--	--	Vertical
5	--	--	--	--	--	--	Vertical
6	--	--	--	--	--	--	Vertical

NO.	Freq. [MHz]	Level [dBμV/m]	Limit [dBμV/m]	Margin [dB]	Height [cm]	Angle [°]	Polarity
1	--	--	--	--	--	--	Horizontal
2	--	--	--	--	--	--	Horizontal
3	--	--	--	--	--	--	Horizontal
4	--	--	--	--	--	--	Horizontal
5	--	--	--	--	--	--	Horizontal
6	--	--	--	--	--	--	Horizontal

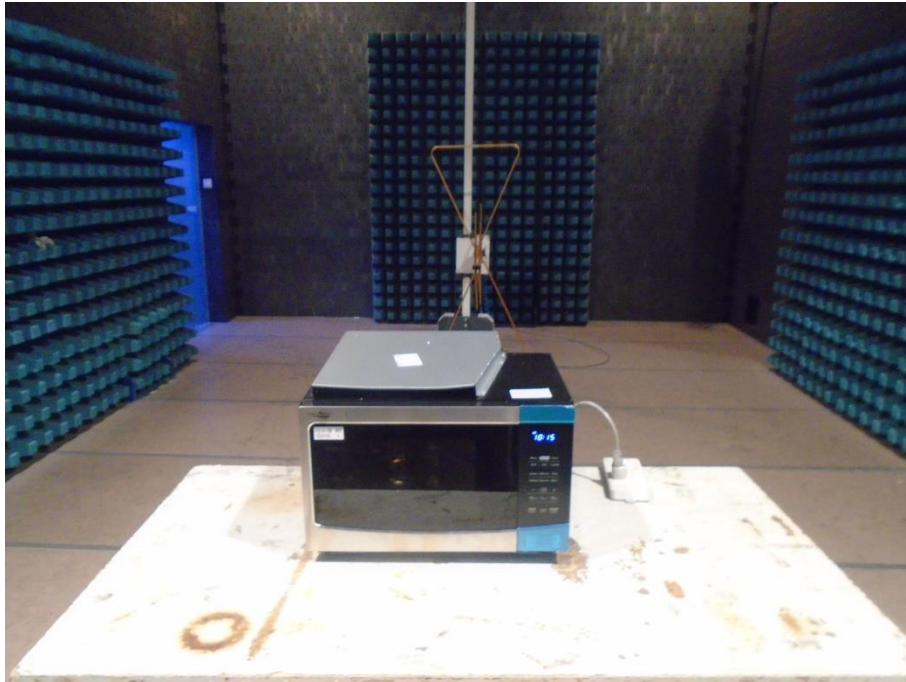


REMARKS:

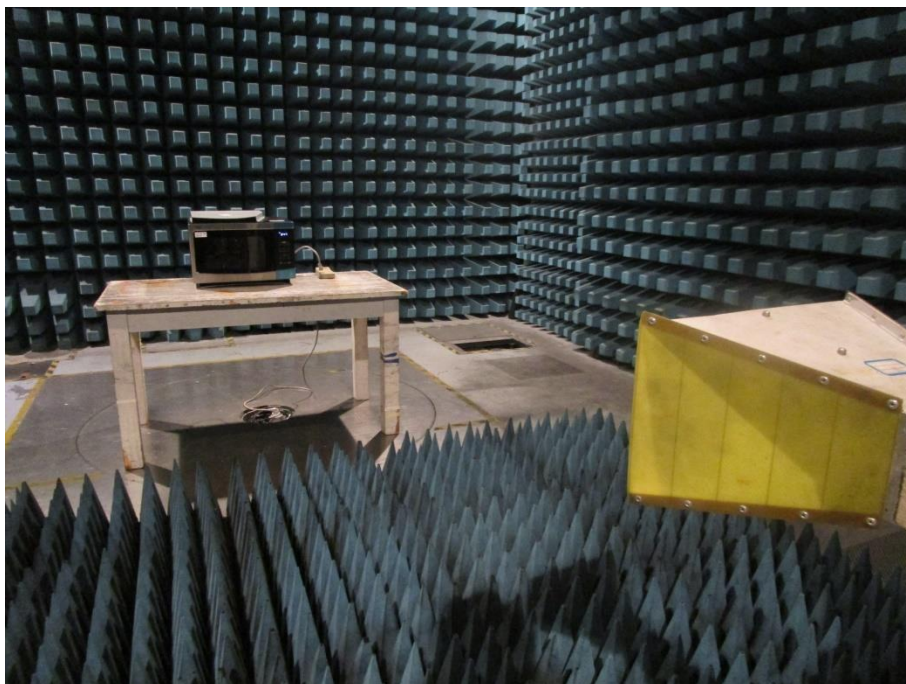
1. Emission Level(dBuV/m) = Raw Value(dBuV) + Correction Factor(dB/m)
2. Correction Factor(dB/m) = Antenna Factor(dB/m) + Cable Factor(dB)
- Pre-Amplifier Factor(dB)
3. For Set up 2,3, The EUT's internal highest frequency is less than 108MHz, so test frequency range is up to 1000MHz. All other frequency readings were too low against the official limit that not recorded.

APPENDIX I: PHOTOGRAPHS OF EMC TEST CONFIGURATION

1. Radiated Emission Measurement below 1GHz



2. Radiated Emission Measurement above 1GHz



3. Conducted emission at AC mains input/output port Measurement



APPENDIX II: PHOTOGRAPHS OF PRODUCT PHOTO

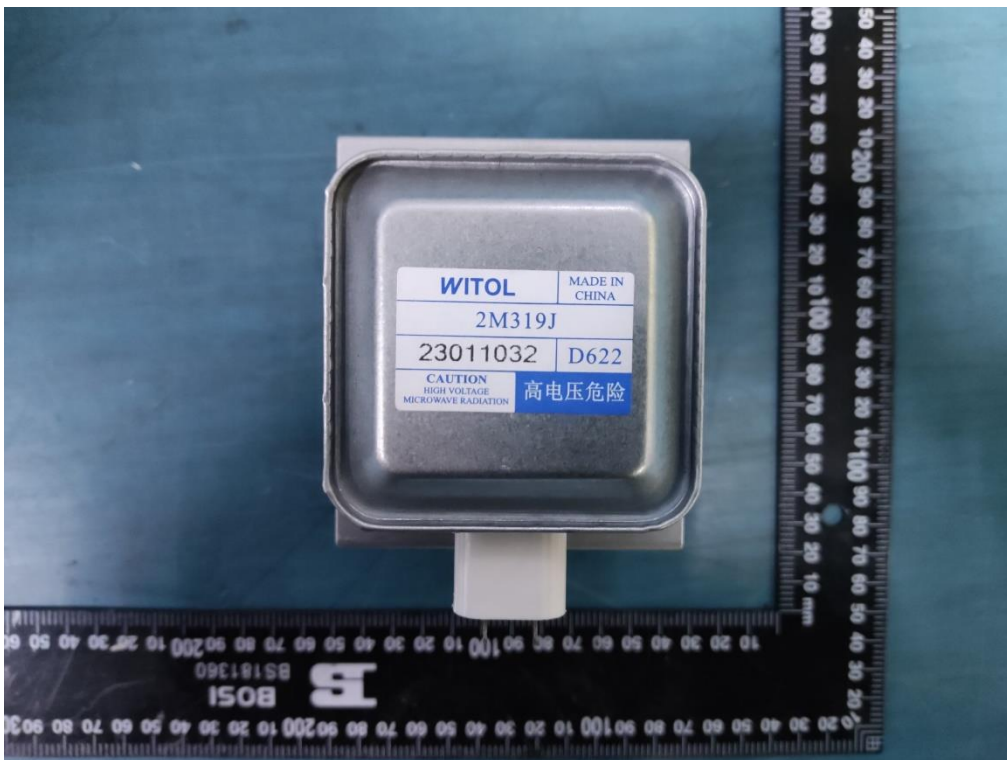
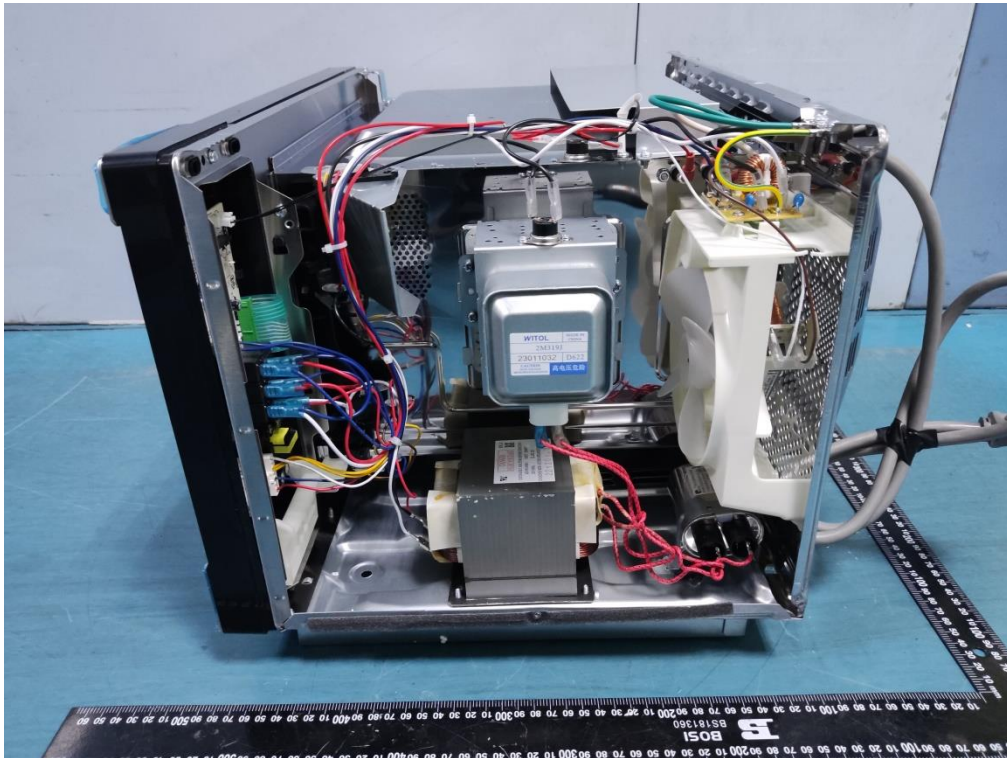
External Photo

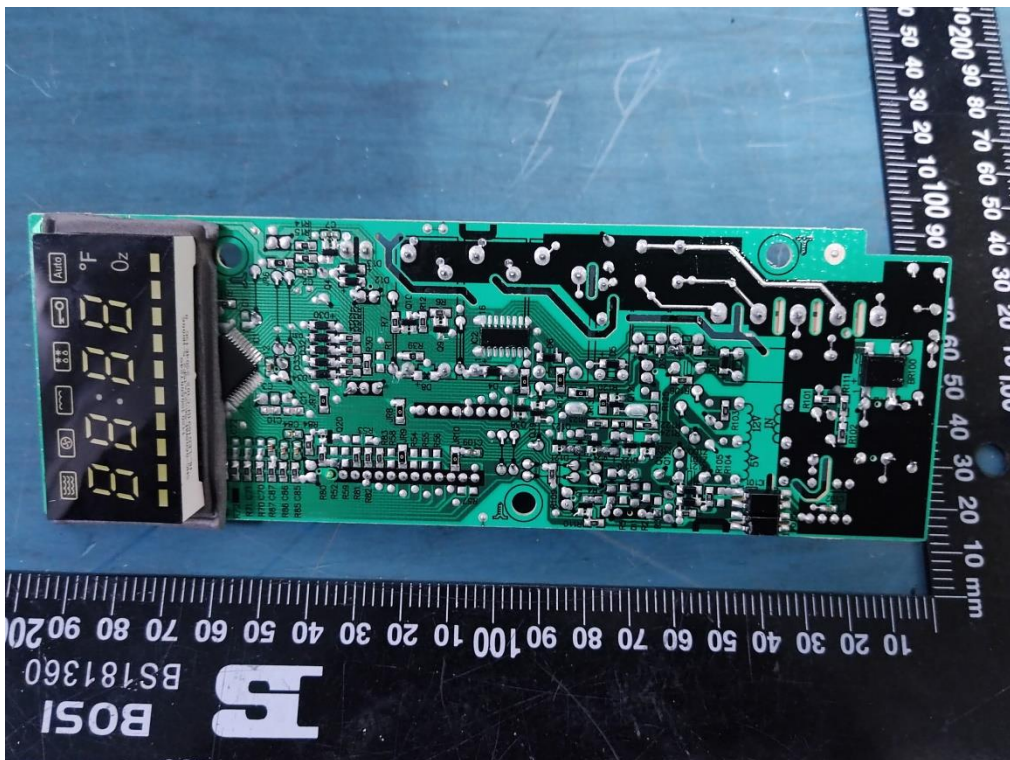
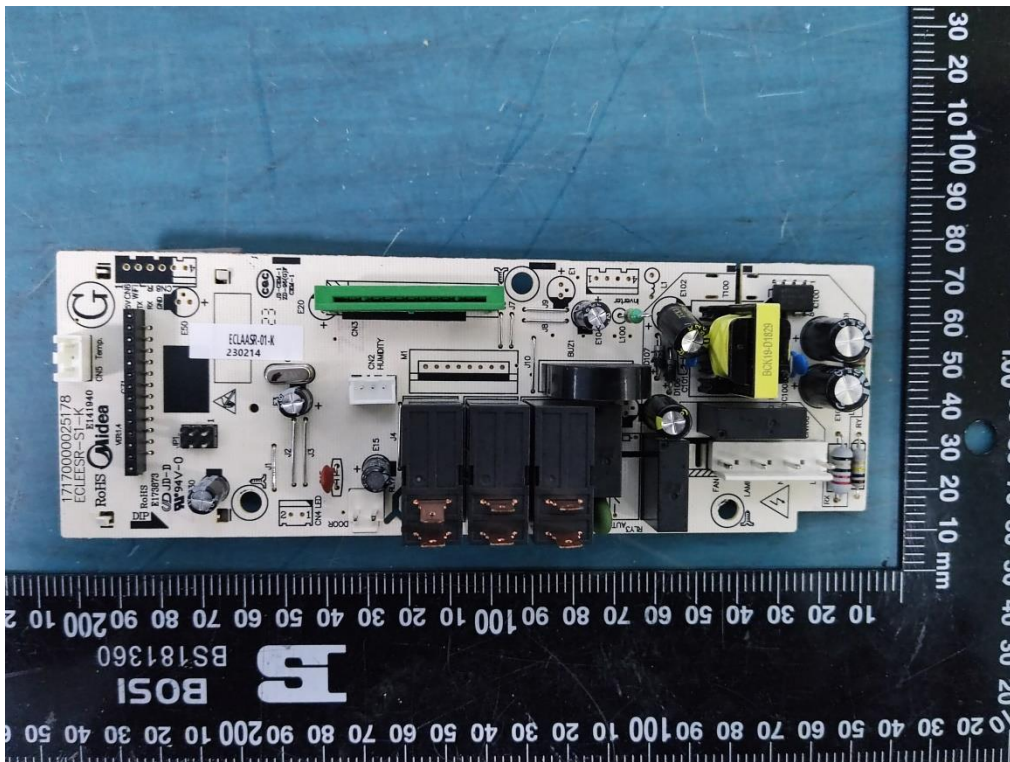


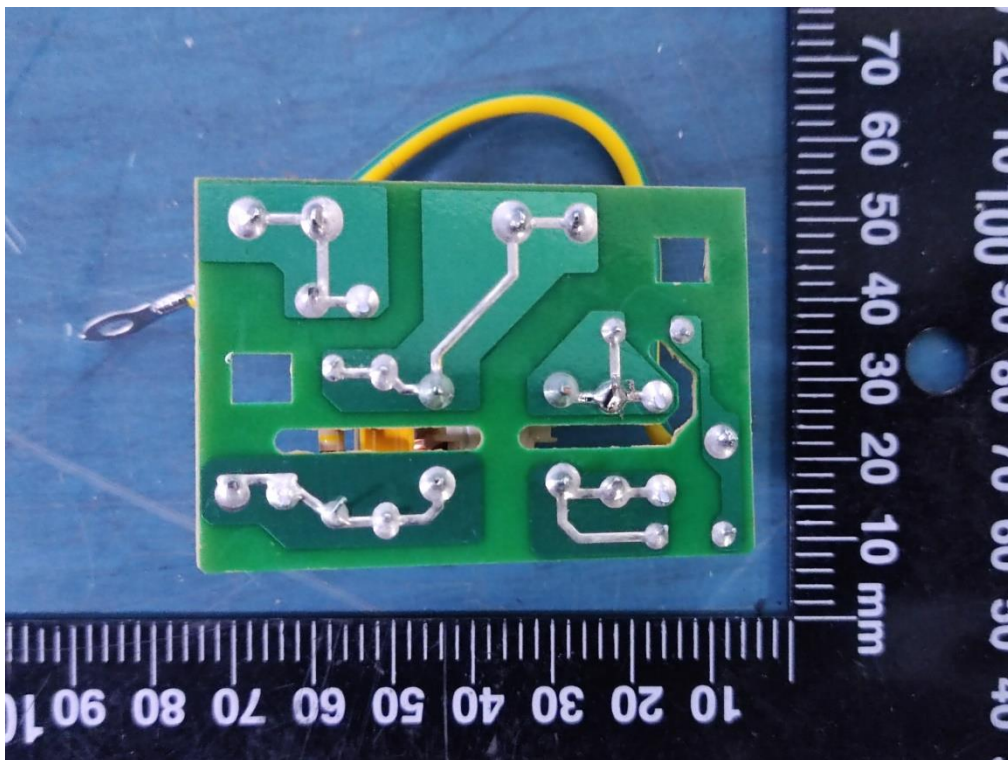
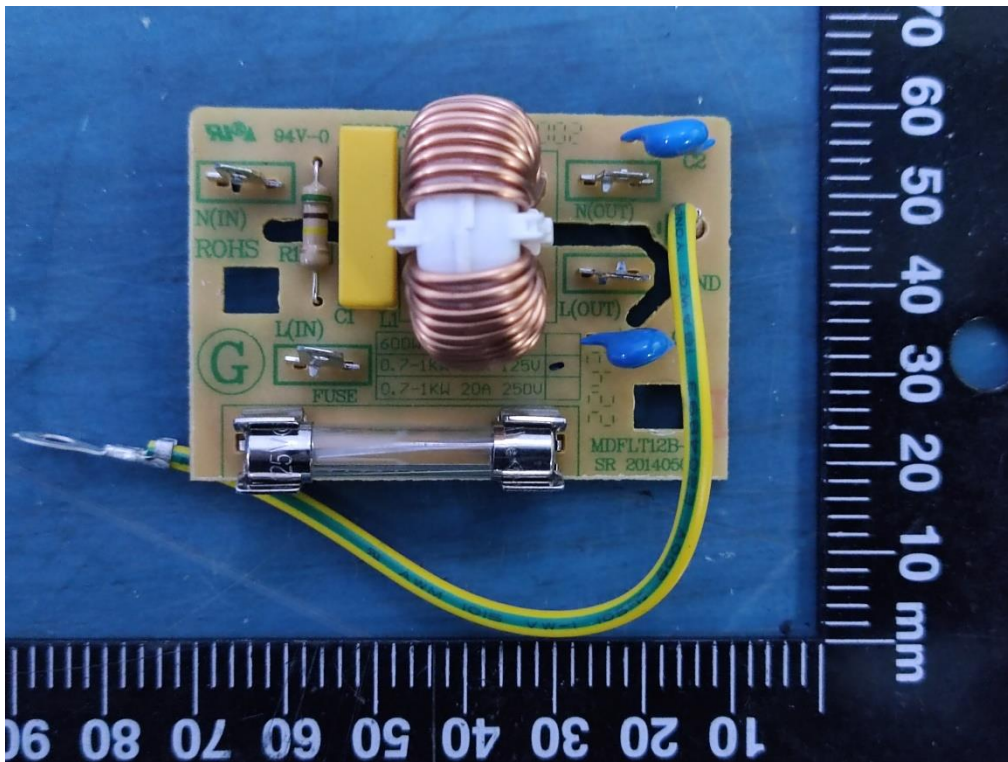


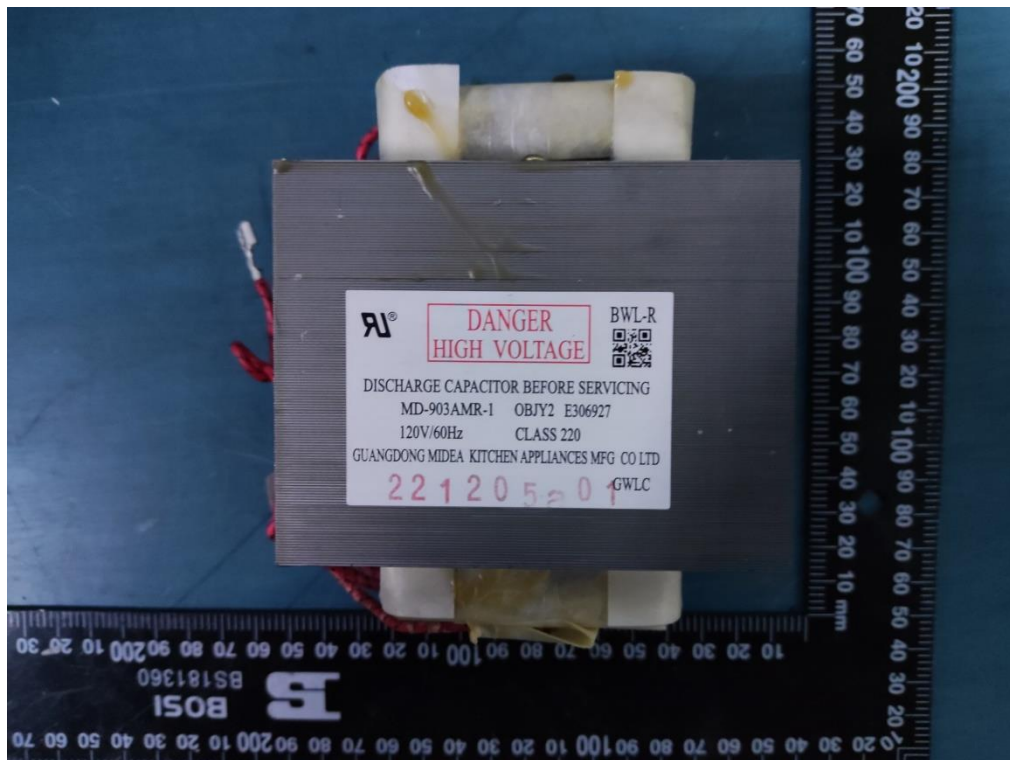


Internal Photo









*** End of Report ***