

INTERNAL PHOTOGRAPHS

This document contains 13 photographs

Photograph No.1
Subscriber unit internal general view



Photograph No.2
Subscriber unit internal close view



Photograph No.3
Subscriber unit internal view with PSU card removed



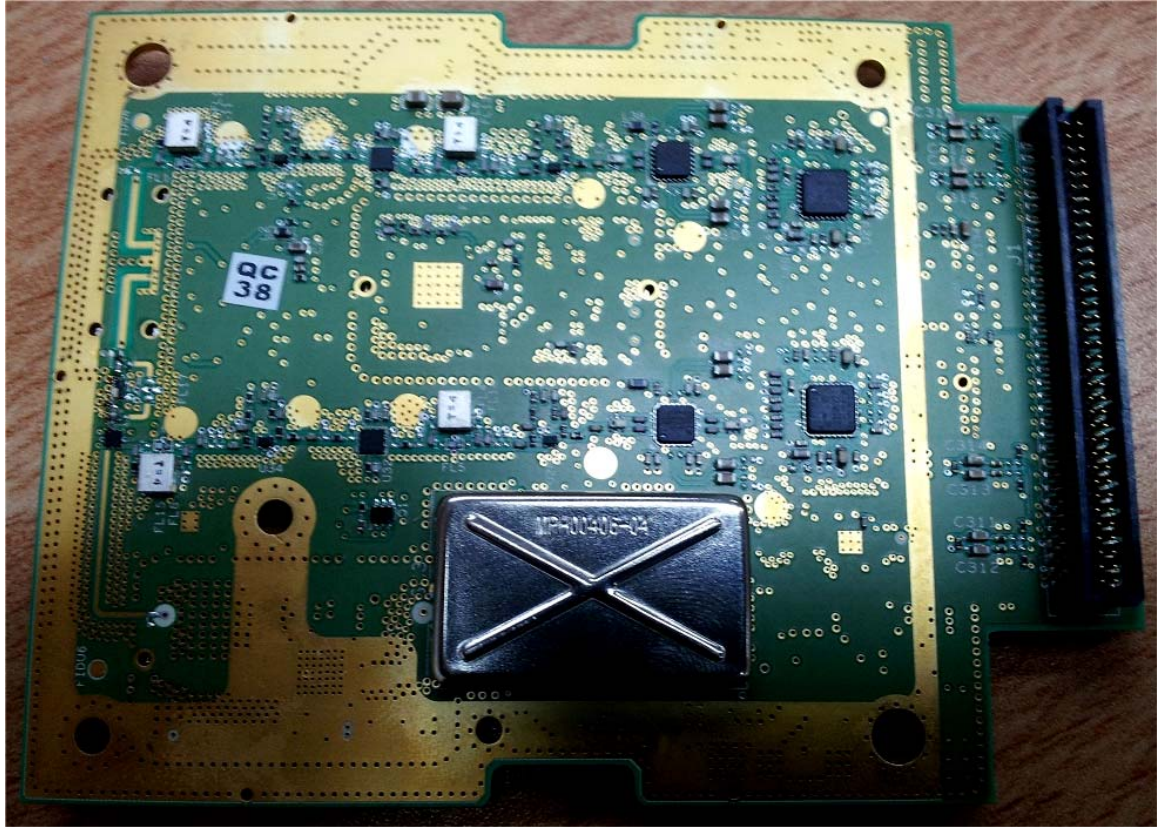
Photograph No.4
Subscriber unit internal view with RF and PSU cards removed



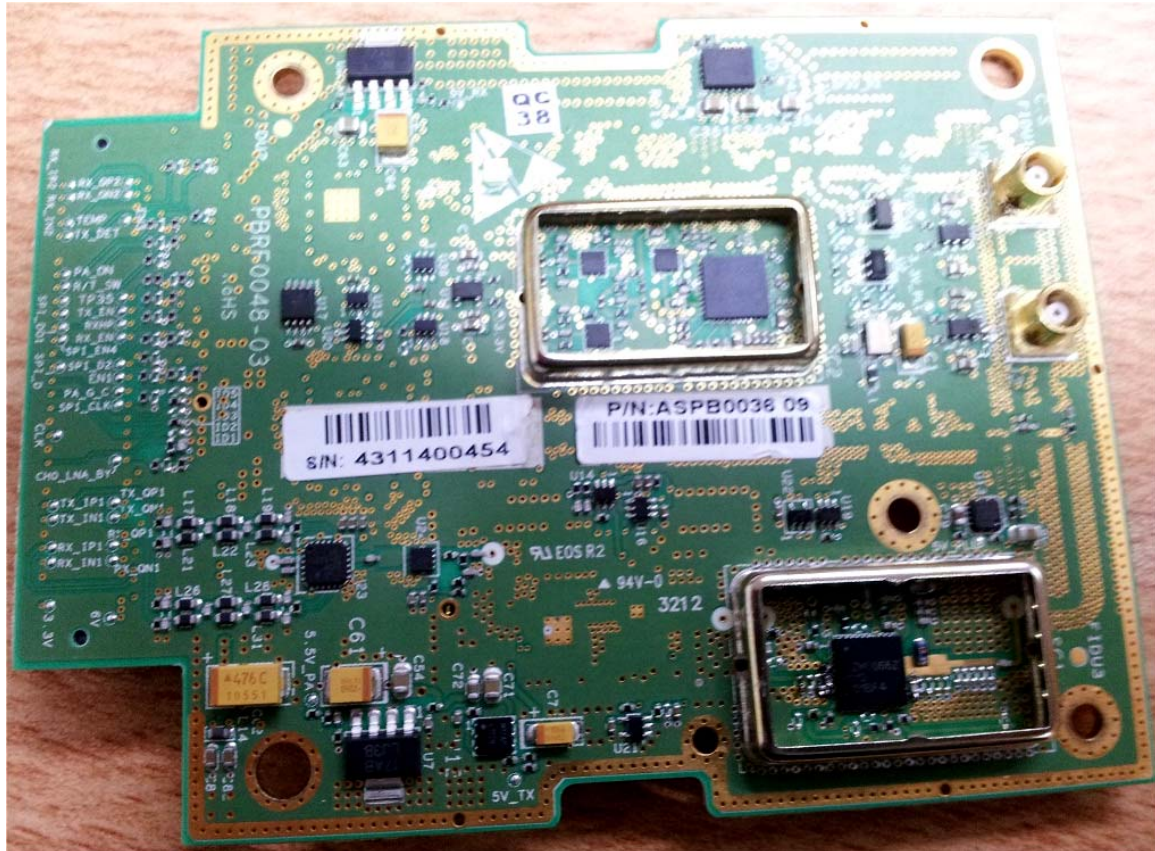
Photograph No.5
Subscriber unit RF PCB front view



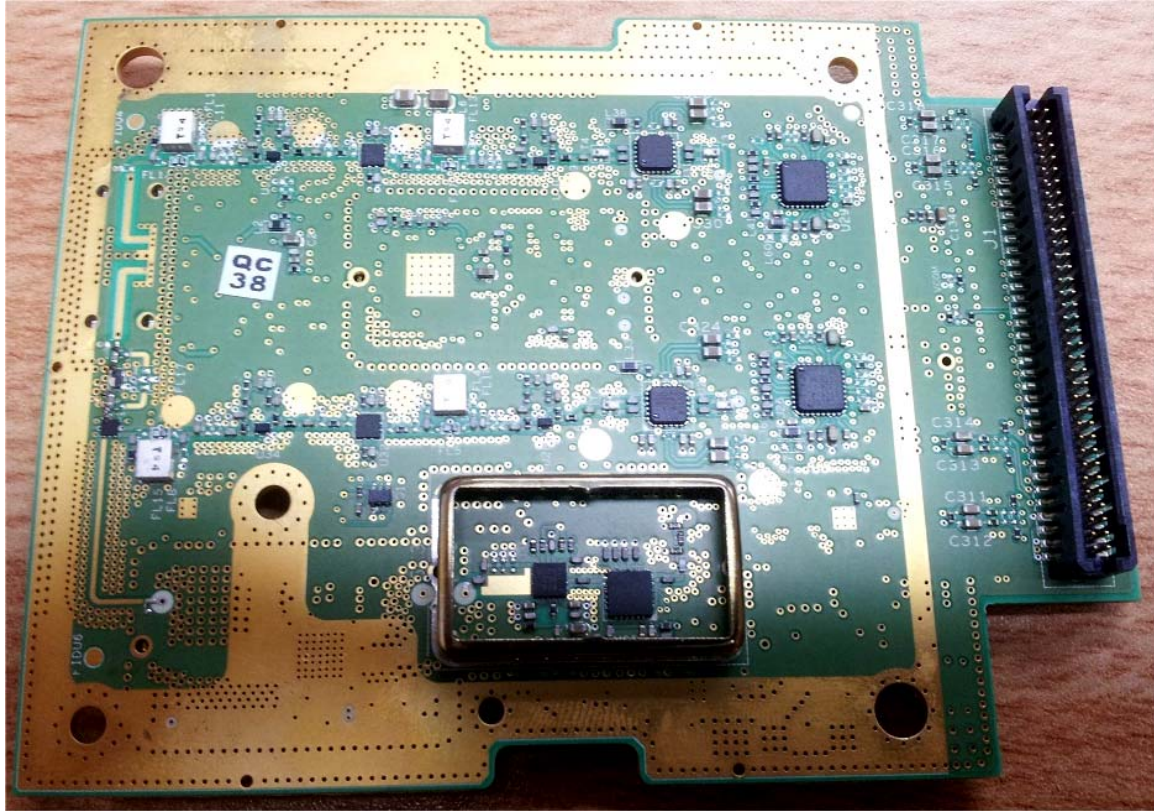
Photograph No.6
Subscriber unit RF PCB bottom view



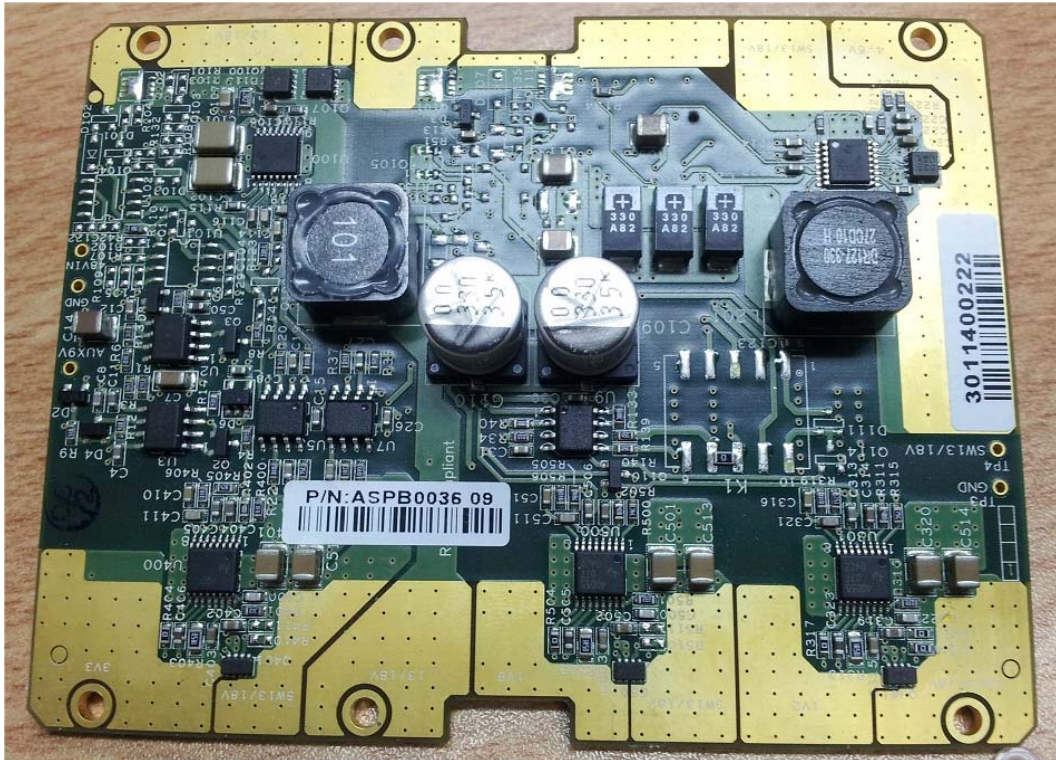
Photograph No.7
RF PCB front view without shields



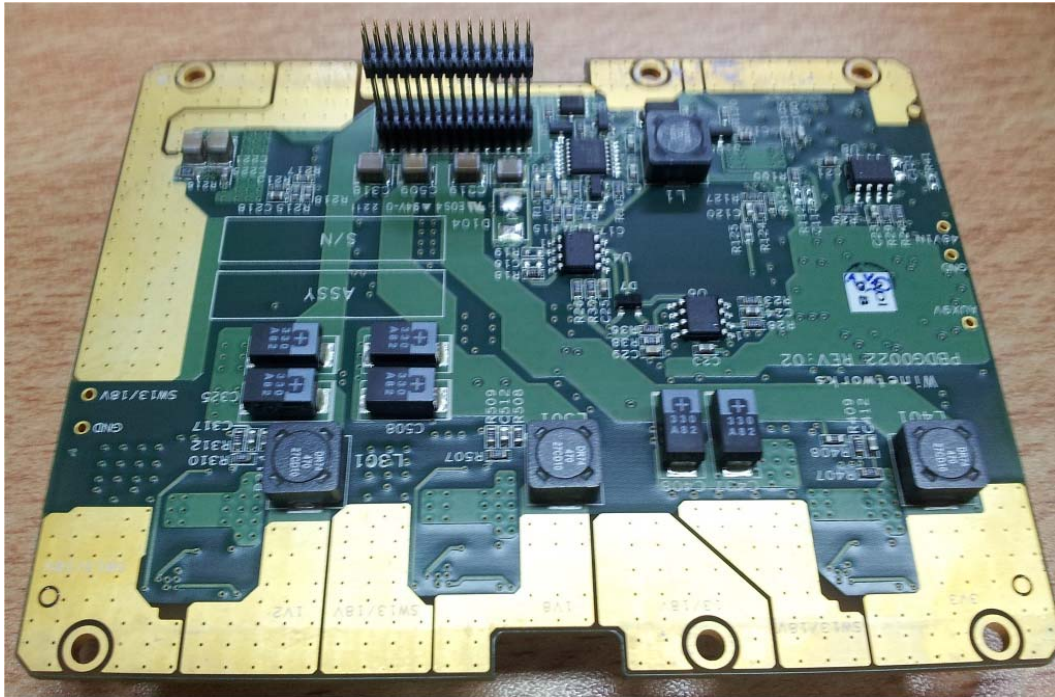
Photograph No.8
RF PCB bottom view without shields



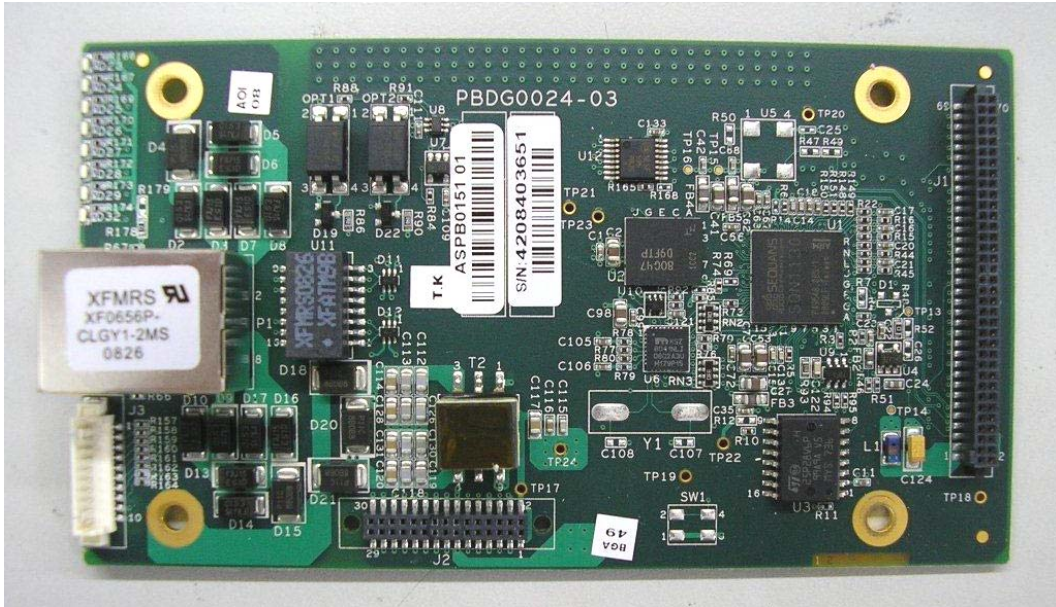
Photograph No.9
Subscriber unit PSU PCB front view



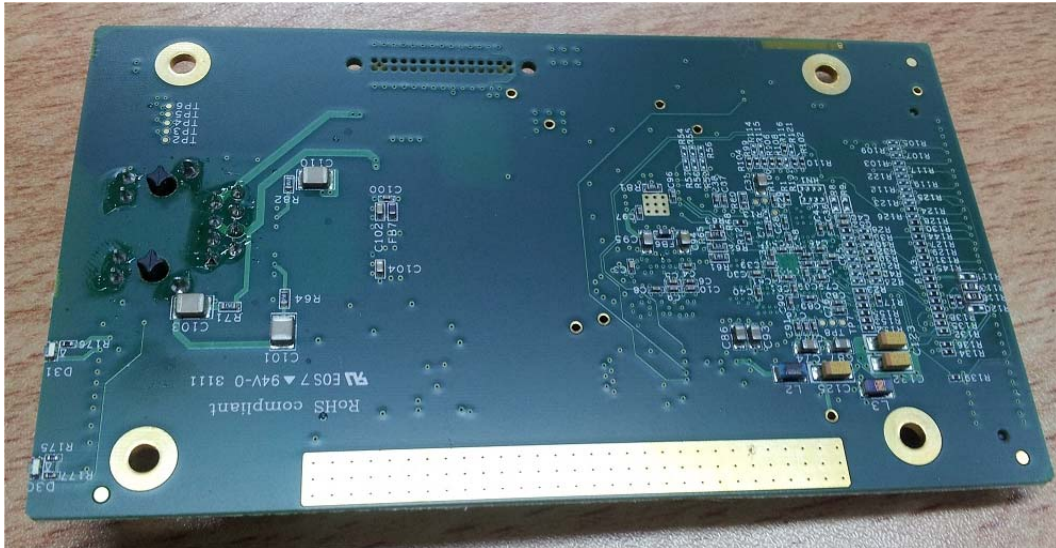
Photograph No.10
Subscriber unit PSU PCB bottom view



Photograph No.11
Subscriber unit digital PCB front view



Photograph No.12
Subscriber unit digital PCB bottom view



Photograph No.13
Subscriber unit digital PCB side view

