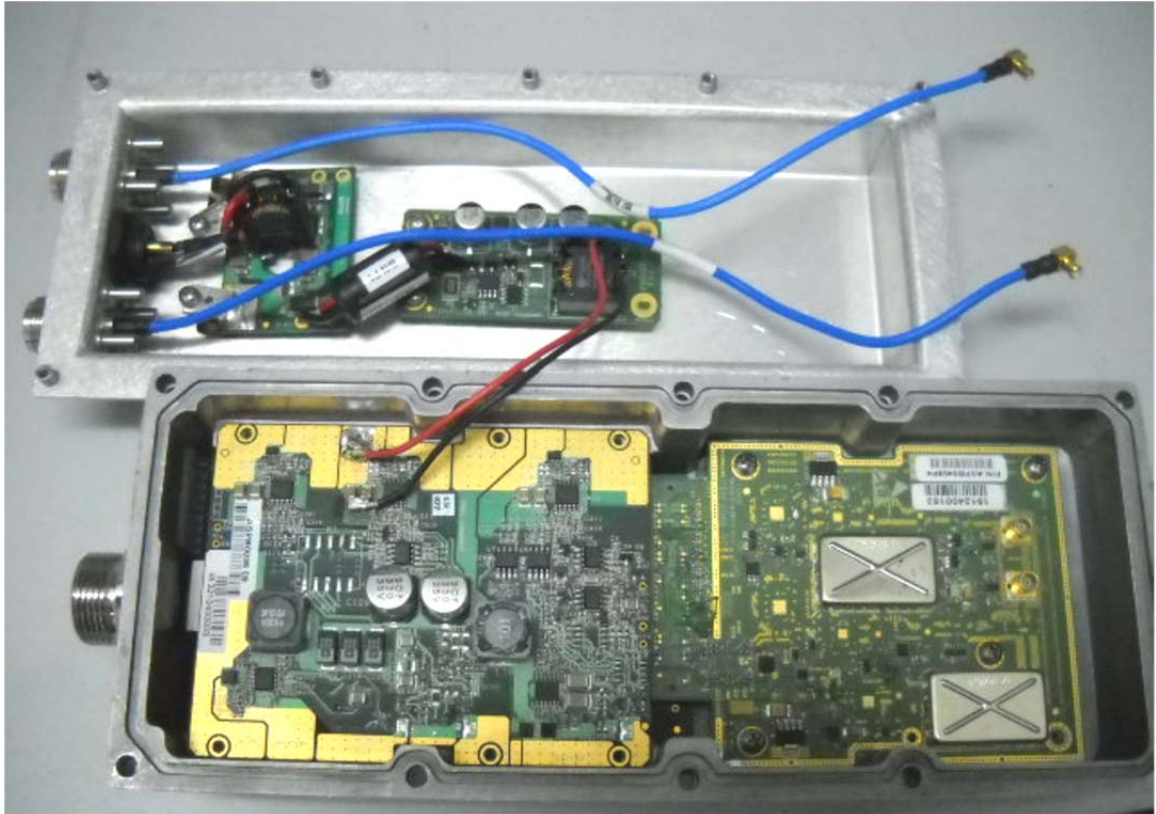


## **INTERNAL PHOTOGRAPHS**

This document contains 13 photographs

Photograph No.1  
Subscriber unit internal general view



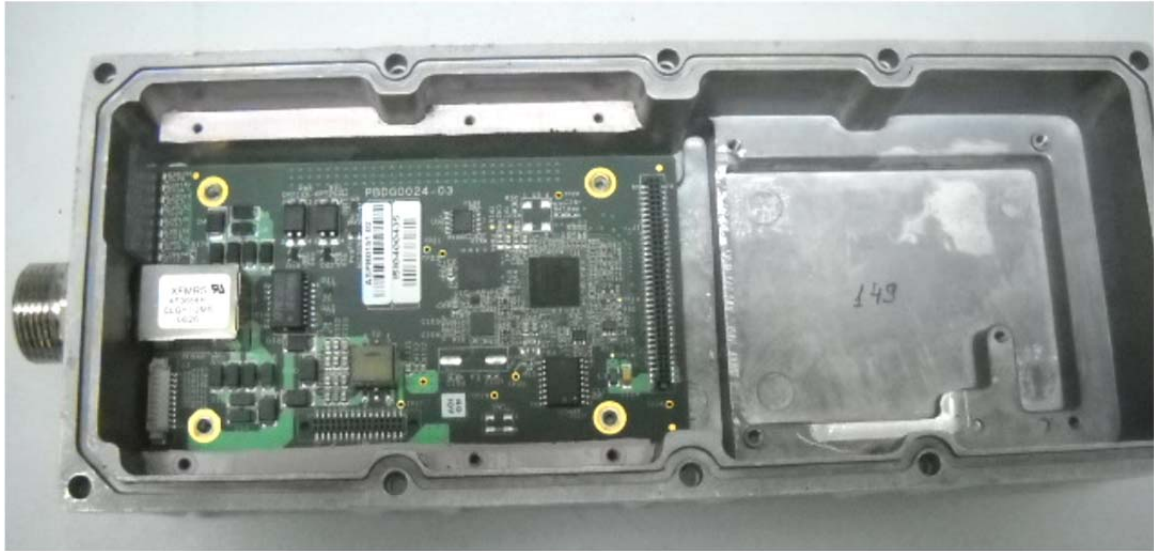
Photograph No.2  
Subscriber unit internal close view



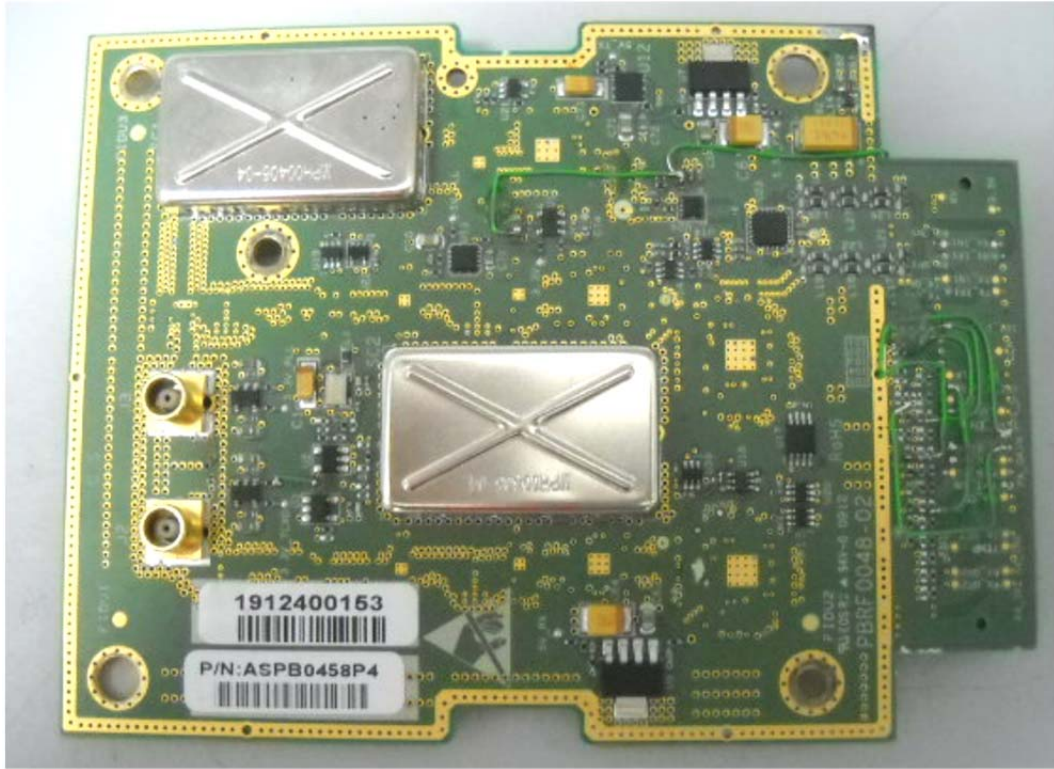
**Photograph No.3**  
**Subscriber unit internal view with PSU card removed**



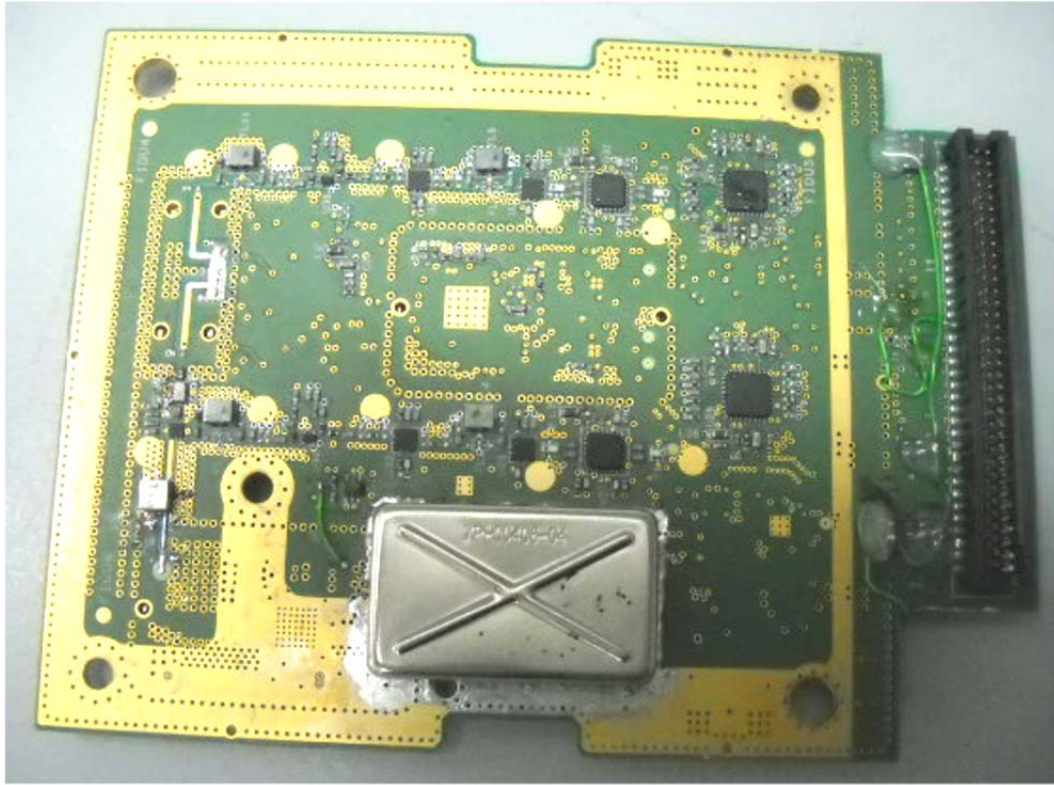
**Photograph No.4**  
**Subscriber unit internal view with RF and PSU cards removed**



Photograph No.5  
Subscriber unit RF PCB front view



**Photograph No.6**  
**Subscriber unit RF PCB bottom view**

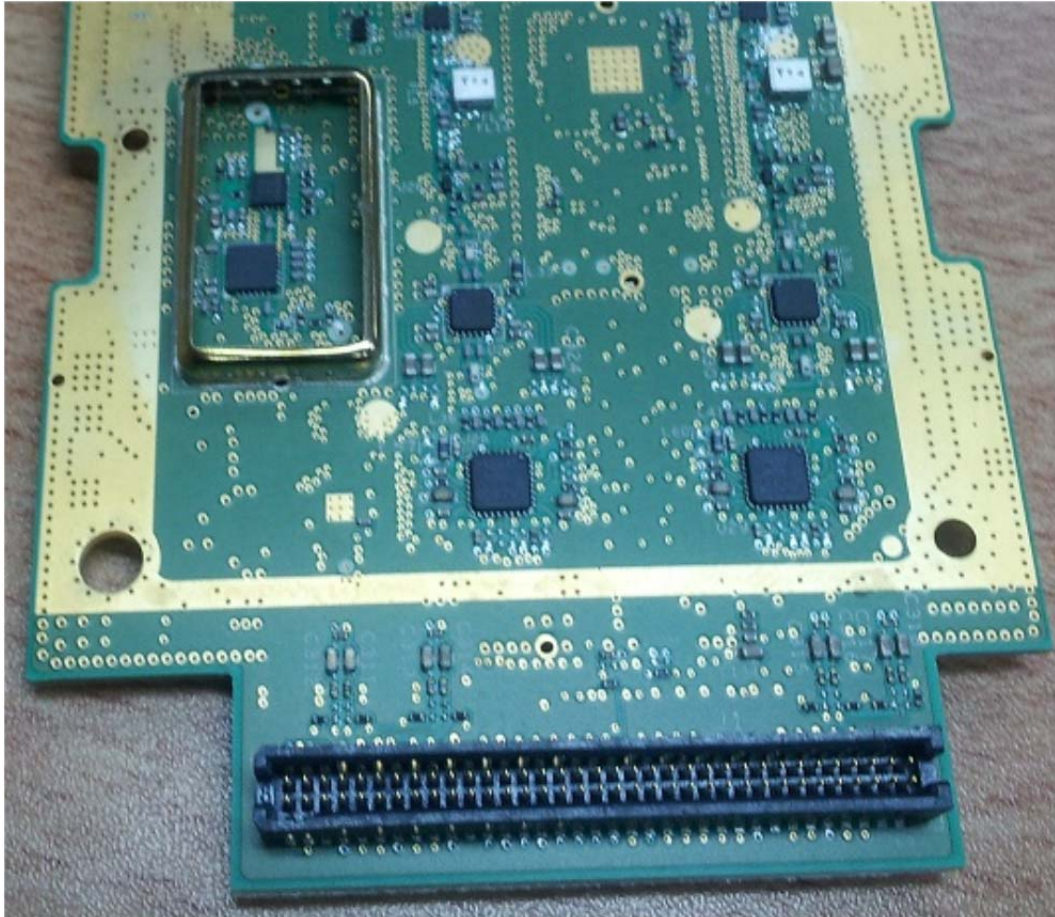


Photograph No.7  
RF PCB front view without shields





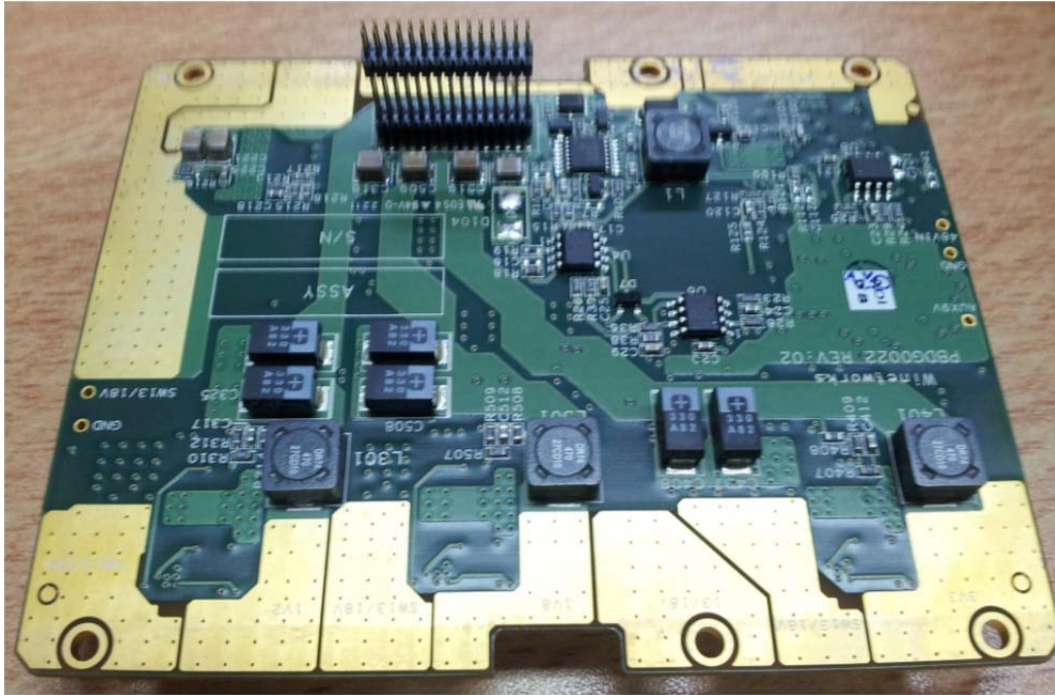
**Photograph No.8**  
**RF PCB bottom view without shields**



Photograph No.9  
Subscriber unit PSU PCB front view



Photograph No.10  
Subscriber unit PSU PCB bottom view



Photograph No.11  
Subscriber unit digital PCB front view

