

INTERNAL PHOTOGRAPHS

This document contains 14 photographs

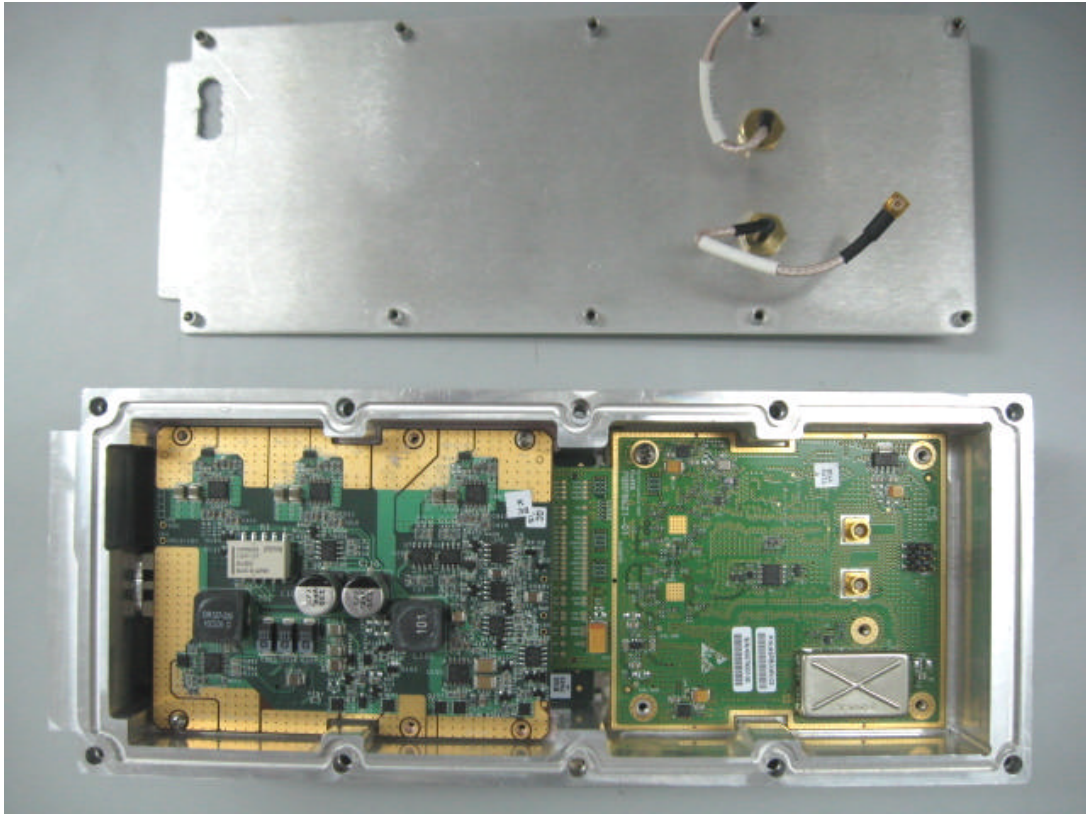
Photograph No.1
Subscriber fixed unit WiN5125-AC internal view



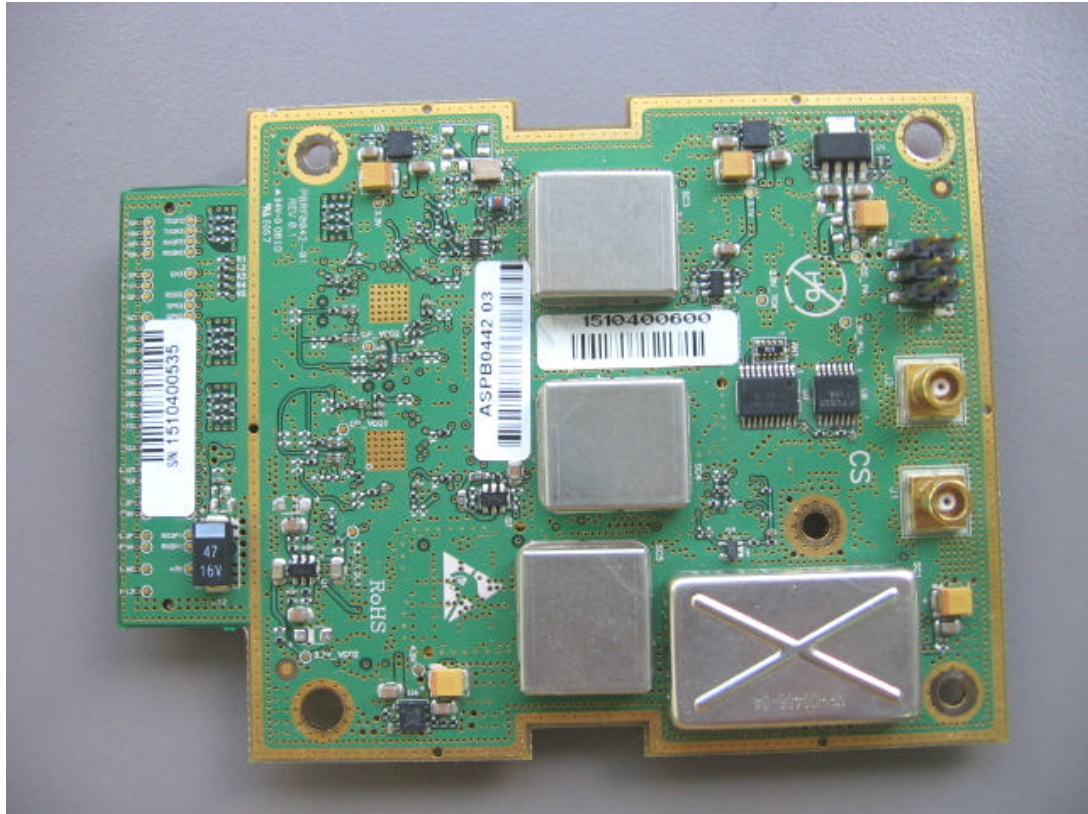
Photograph No.2
Subscriber mobile unit WiN5125-DC internal view



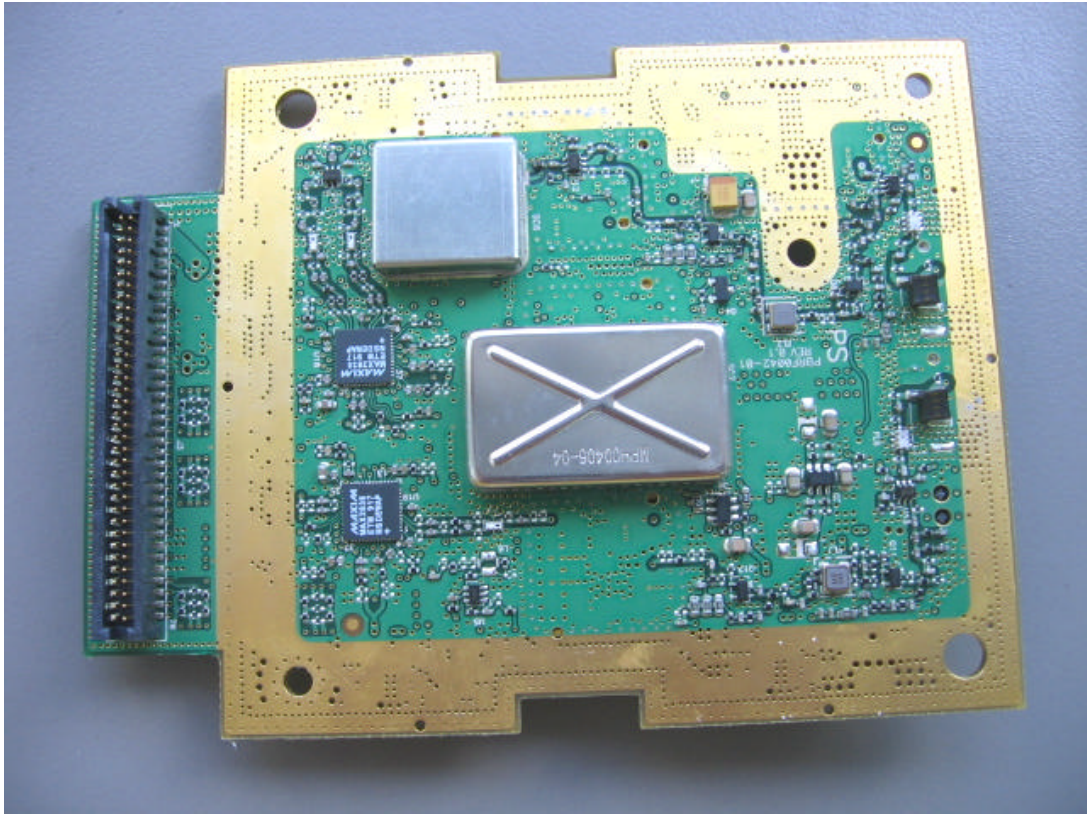
Photograph No.3
Subscriber fixed unit WiN5225 internal view



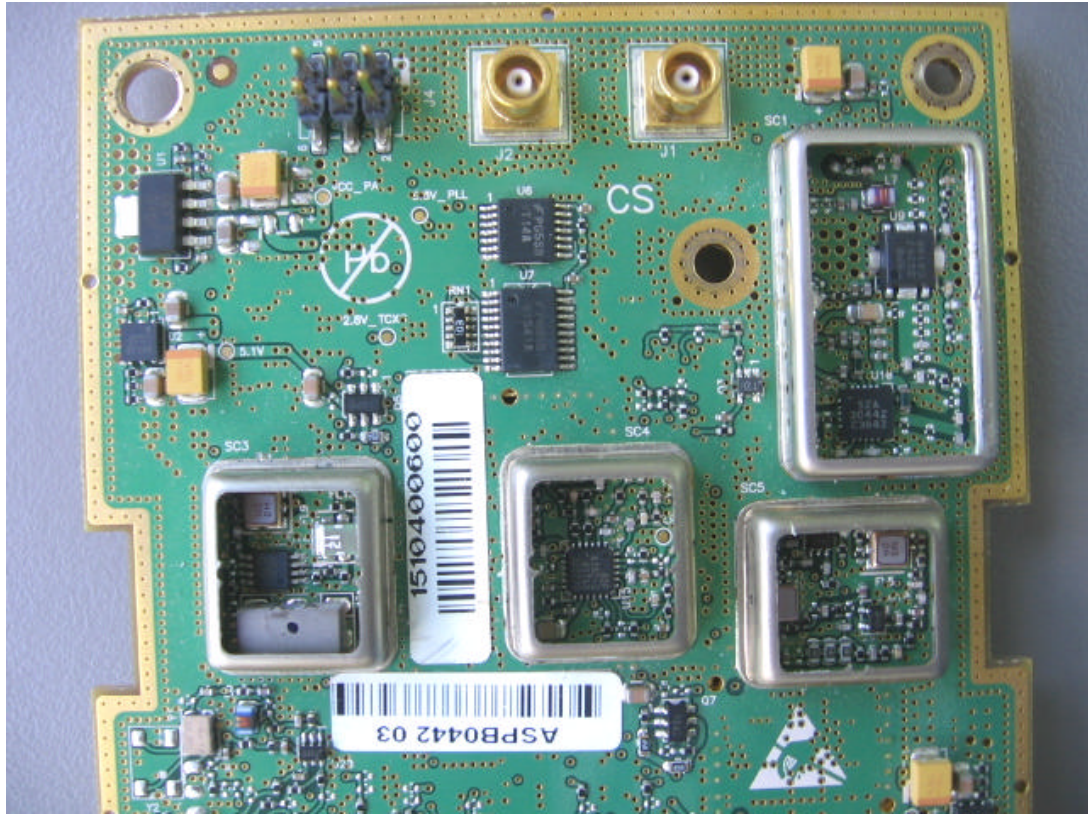
Photograph No.4
Subscriber fixed unit WiN5125-AC/mobile unit WiN5125-DC, RF PCB front view



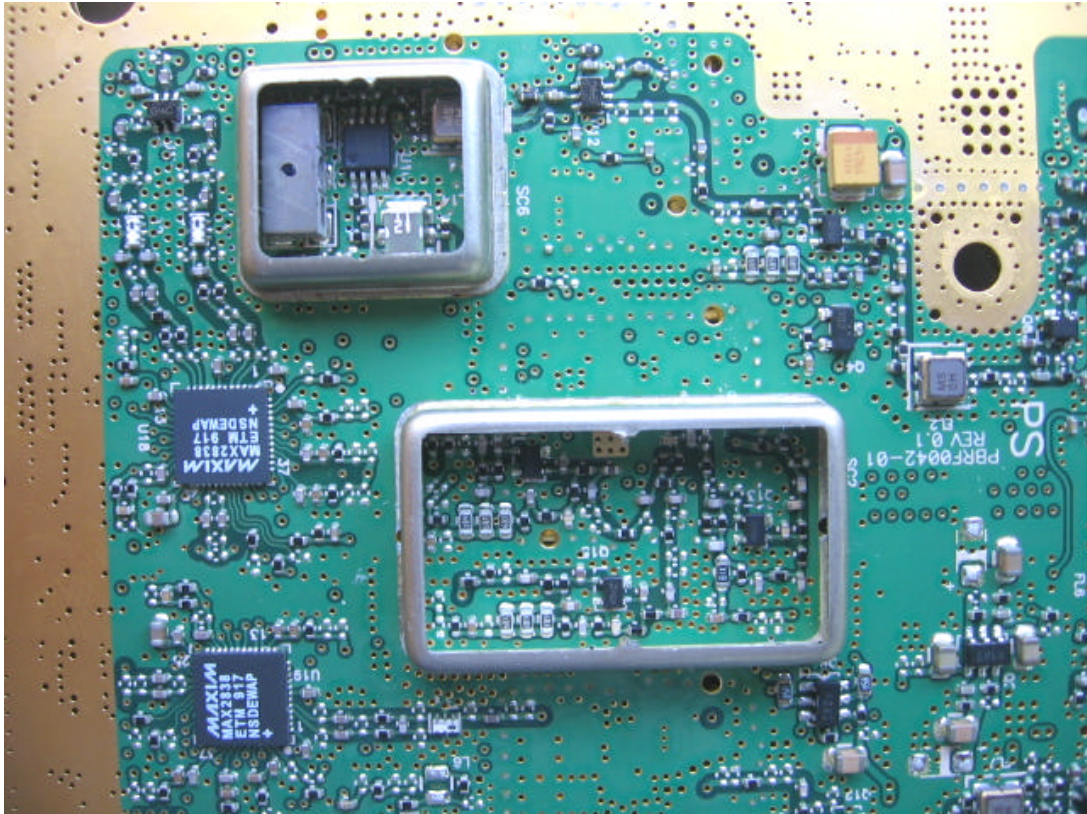
Photograph No.5
Subscriber fixed unit WiN5125-AC/mobile unit WiN5125-DC, RF PCB bottom view



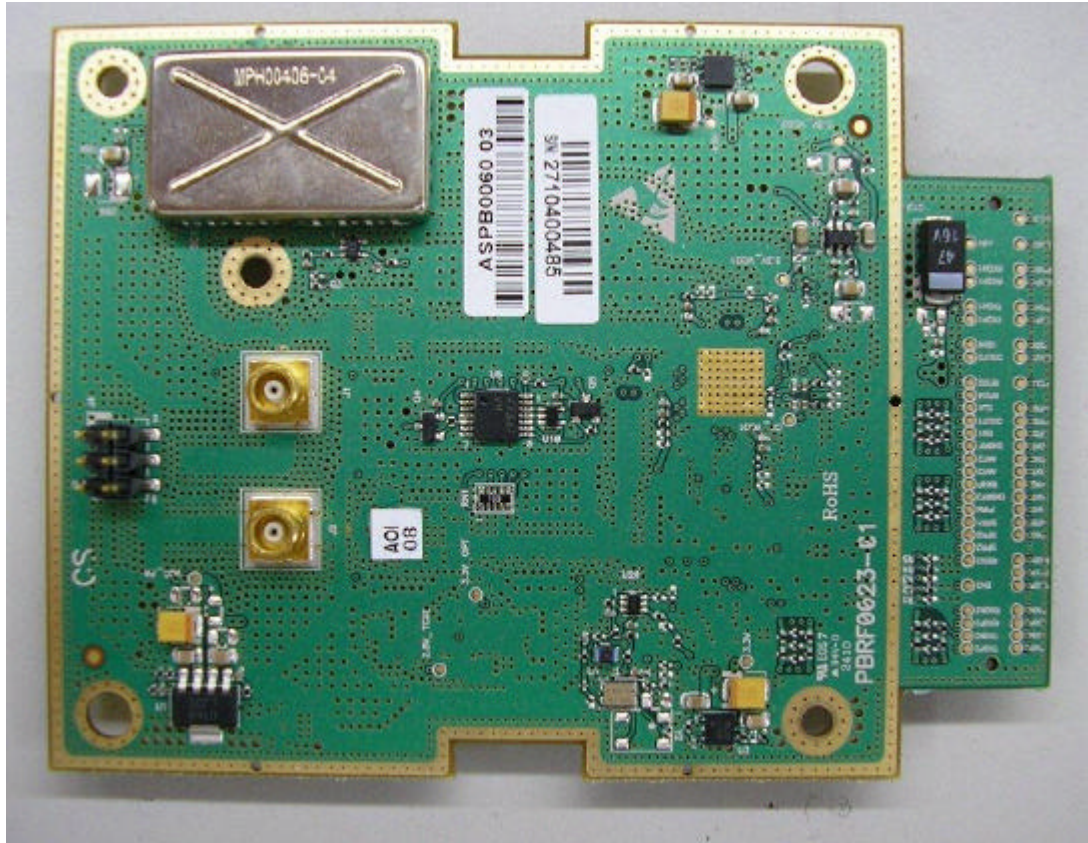
Photograph No.6
WiN5125-AC/ WiN5125-DC, RF PCB front view without shields



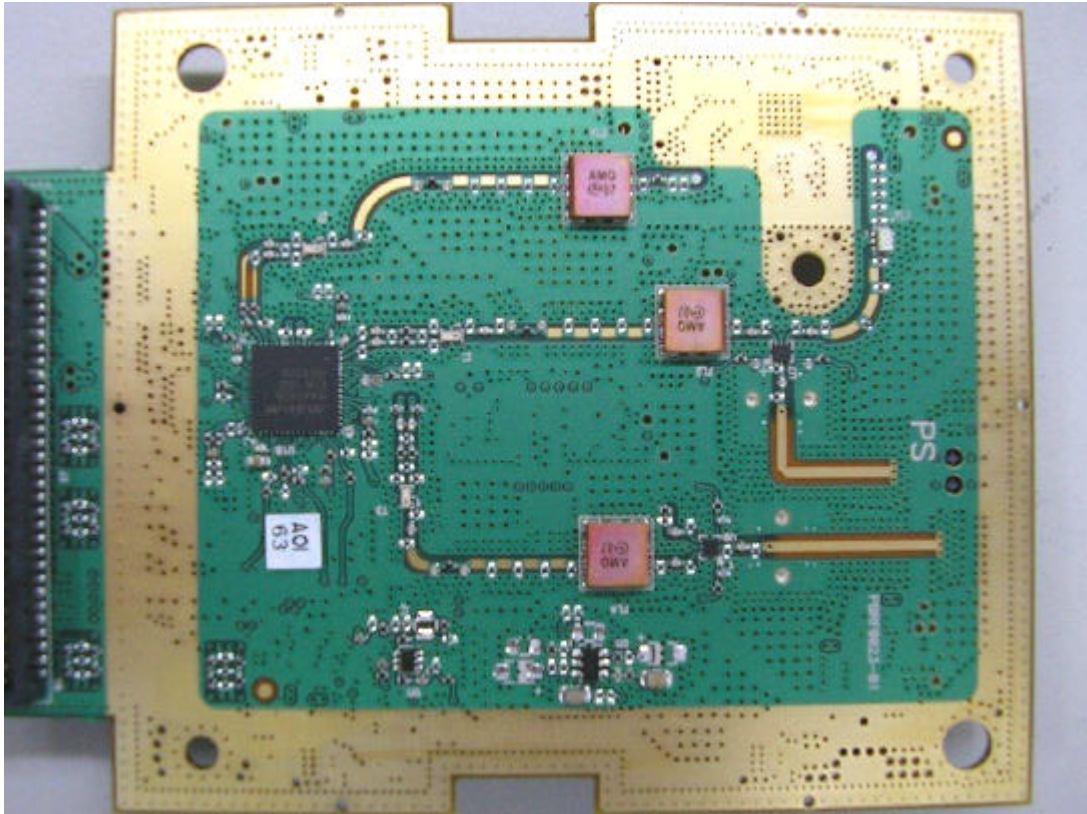
Photograph No.7
WiN5125-AC/WiN5125-DC, RF PCB bottom view without shields



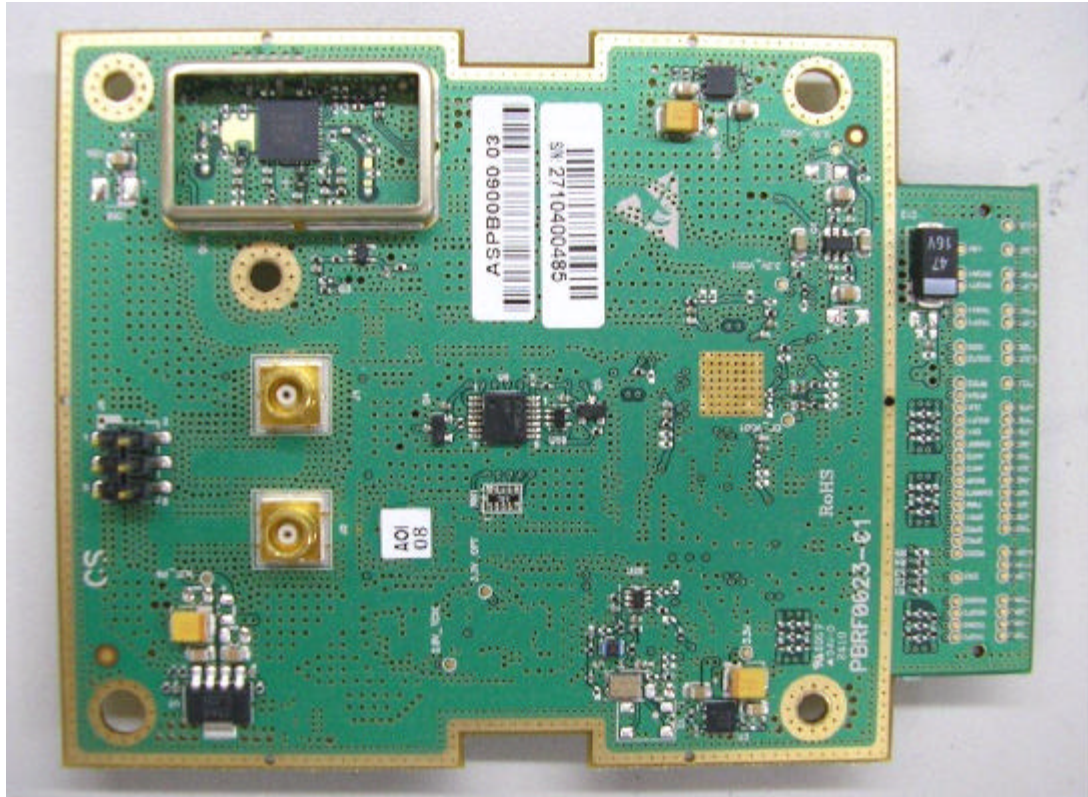
Photograph No.8
Subscriber fixed unit WiN5225, RF PCB front view



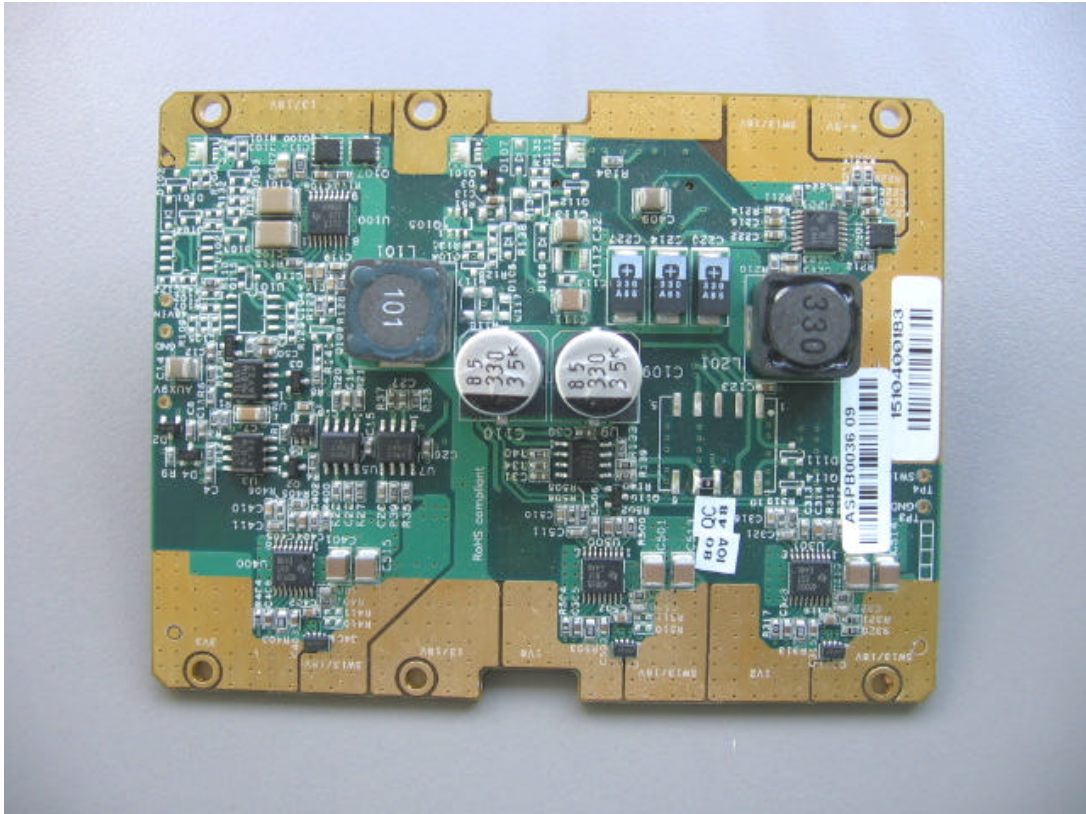
Photograph No.9
Subscriber fixed unit WiN5225, RF PCB bottom view



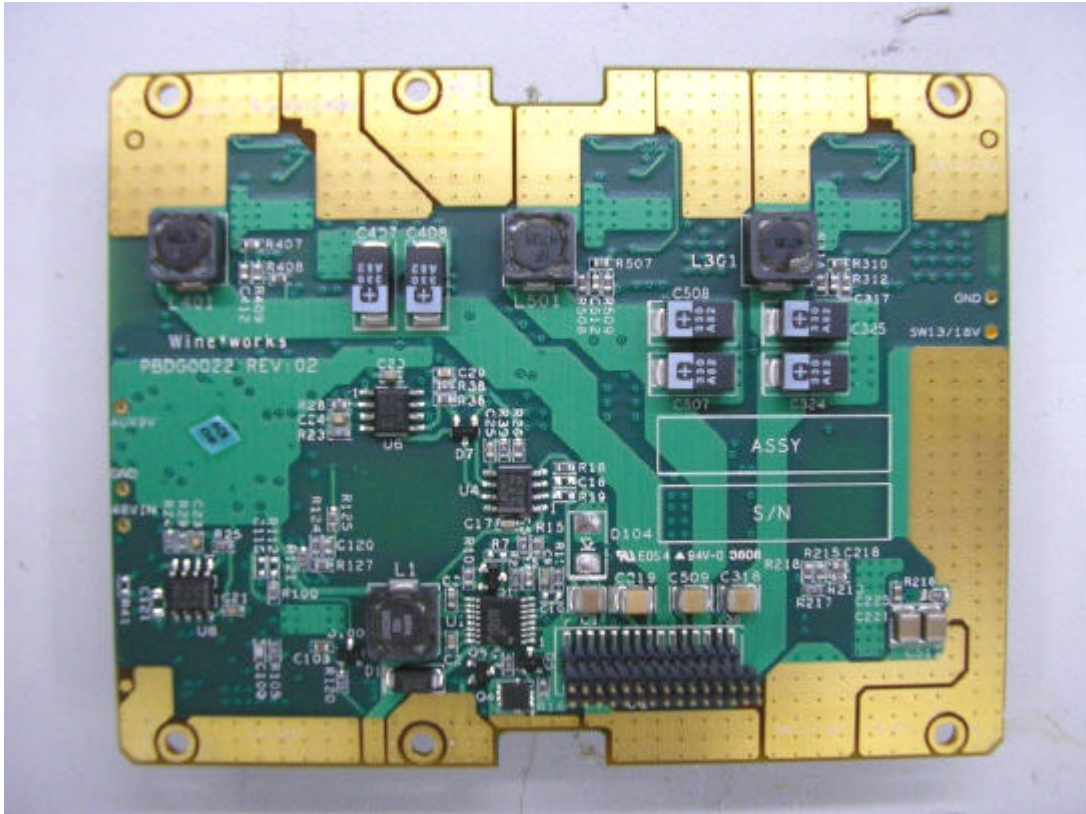
Photograph No.10
Subscriber fixed unit WiN5225, RF PCB without shield



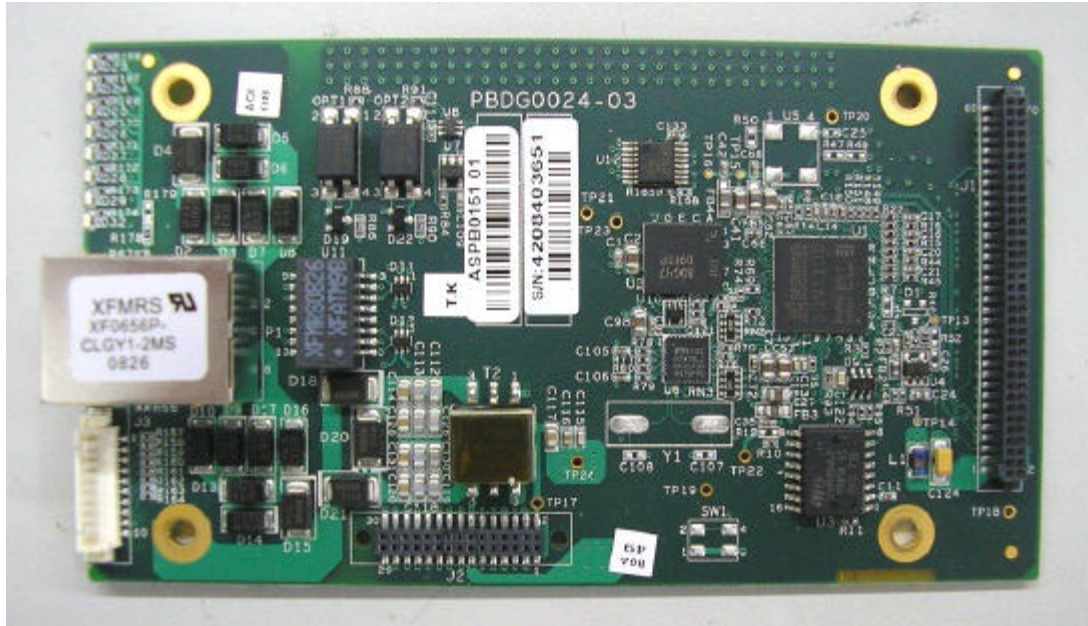
Photograph No.11
Subscriber unit WiN5125-AC/WiN5125-DC/WiN5225, PSU PCB front view



Photograph No.12
Subscriber unit WiN5125-AC/WiN5125-DC/WiN5225, PSU PCB bottom view



Photograph No.13
Subscriber unit WIN5125-AC/WIN5125-DC/WIN5225, digital PCB front view



Photograph No.14
Subscriber unit WiN5125-AC/WiN5125-DC/WiN5225, digital PCB bottom view

