
FCC Test Report

Report No.: AGC10374170602FE03

FCC ID : VEP-MP400-R
APPLICATION PURPOSE : Original Equipment
PRODUCT DESIGNATION : Mantis Pro 400 Game Caller Remote Control
BRAND NAME : WESTERN RIVERS
MODEL NAME : WRC-MP400
CLIENT : K-Mark Industrial Limited.
DATE OF ISSUE : June 21, 2017
STANDARD(S) : FCC Part 15 Rules
REPORT VERSION : V1.0

Attestation of Global Compliance (Shenzhen) Co., Ltd



CAUTION:

This report shall not be reproduced except in full without the written permission of the test laboratory and shall not be quoted out of context.



Report Revise Record

Report Version	Revise Time	Issued Date	Valid Version	Notes
V1.0	/	June 21, 2017	Valid	Original Report

TABLE OF CONTENTS

1. VERIFICATION OF CONFORMITY	4
2. GENERAL INFORMATION	5
2.1. PRODUCT DESCRIPTION	5
2.2. RELATED SUBMITTAL(S) / GRANT (S)	5
2.3. TEST METHODOLOGY	5
2.4. SPECIAL ACCESSORIES	5
2.5. EQUIPMENT MODIFICATIONS	5
3. MEASUREMENT UNCERTAINTY	6
4. DESCRIPTION OF TEST MODES.....	6
5. SYSTEM TEST CONFIGURATION	7
5.1. EQUIPMENT USED IN EUT SYSTEM.....	7
5.2. SUMMARY OF TEST RESULTS.....	7
6. TEST FACILITY	8
7. ANTENNA REQUIREMENT	9
8. PROVISION FOR MOMENTARY OPERATION	10
8.1 MEASUREMENT PROCEDURE.....	10
8.2 TEST SETUP	10
8.3 TEST RESULT	11
9. RADIATED EMISSION	12
9.1. MEASUREMENT PROCEDURE.....	12
9.2. TEST SETUP	14
9.3. TEST RESULT	15
10. BANDWIDTH	17
10.1. MEASUREMENT PROCEDURE.....	17
10.2. TEST SETUP	17
10.3. TEST RESULT	18
APPENDIX A: PHOTOGRAPHS OF TEST SETUP	19
APPENDIX B: PHOTOGRAPHS OF EUT	20

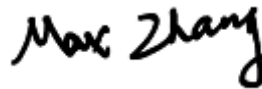
1. VERIFICATION OF CONFORMITY

Applicant	K-Mark Industrial Limited.
Address	Flat A, 7/F., Mai On Ind. Bldg., 17-21 Kung Yip Street, Kwai Chung, Hong Kong
Manufacturer	K-Mark Industrial Limited.
Address	Flat A, 7/F., Mai On Ind. Bldg., 17-21 Kung Yip Street, Kwai Chung, Hong Kong
Product Designation	Mantis Pro 400 Game Caller Remote Control
Brand Name	WESTERN RIVERS
Test Model:	WRC-MP400
Date of test	June 19, 2017 to June 21, 2017
Deviation	None
Condition of Test Sample	Normal
Report Template	AGCRT-US-BR/RF (2013-03-01)

We hereby certify that:

The above equipment was tested by Dongguan Precise Testing Service Co., Ltd. The test data, data evaluation, test procedures, and equipment configurations shown in this report were made in accordance with the procedures given in ANSI C63.10 (2013) and the energy emitted by the sample EUT tested as described in this report is in compliance with radiated emission limits of FCC Rules Part 15.231.

Tested by



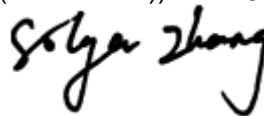
Max Zhang(Zhang Yi) June 21, 2017

Reviewed by



Bart Xie(Xie Xiaobin) June 21, 2017

Approved by



Solger Zhang(Zhang Hongyi)
Authorized Officer June 21, 2017

2. GENERAL INFORMATION

2.1. PRODUCT DESCRIPTION

A major technical description of EUT is described as following

Operation Frequency	432.98MHz
Field Strength(3m)	76.83dBuV/m(Peak)@3m
Modulation	FSK
Number of channels	1
Hardware Version	V1.0
Software Version	V1.0
Antenna Designation	External antenna
Antenna Gain	0dBi
Power Supply	DC9V by Battery

2.2. RELATED SUBMITTAL(S) / GRANT (S)

This submittal(s) (test report) is intended for **FCC ID: VEP-MP400-R** filing to comply with Section 15.231 of the FCC Part 15, Subpart C Rules.

2.3. TEST METHODOLOGY

Both conducted and radiated testing was performed according to the procedures in ANSI C63.10 (2013). Radiated testing was performed at an antenna to EUT distance 3 meters.

2.4. SPECIAL ACCESSORIES

Refer to section 5.1.

2.5. EQUIPMENT MODIFICATIONS

Not available for this EUT intended for grant.

3. MEASUREMENT UNCERTAINTY

The reported uncertainty of measurement $y \pm U$, where expanded uncertainty U is based on a standard uncertainty multiplied by a coverage factor of $k=2$, providing a level of confidence of approximately 95 %.

No.	Item	Uncertainty
1	Conducted Emission Test	$\pm 3.18\text{dB}$
2	All emissions, radiated	$\pm 3.91\text{dB}$
3	Temperature	$\pm 0.5^\circ\text{C}$
4	Humidity	$\pm 2\%$

4. DESCRIPTION OF TEST MODES

NO.	TEST MODE DESCRIPTION
1	Transmitting mode
<p>Note:</p> <ol style="list-style-type: none"> Volume Up/Down and Play Button activate the transmitter. Pre-test show no difference between the buttons. Play Button used for documented measurements. For Radiated Emission, 3axis were chosen for testing for each applicable mode. The transmitter activated automatically shall cease transmission within 5 seconds after activation. 	

5. SYSTEM TEST CONFIGURATION

5.1. EQUIPMENT USED IN EUT SYSTEM

Item	Equipment	Model No.	ID or Specification	Remark
1	MANTIS PRO 400 GAME	WRC-MP400	VEP-MP400-R	EUT

5.2. SUMMARY OF TEST RESULTS

FCC RULES	DESCRIPTION OF TEST	RESULT
§15.203	Antenna Requirement	Compliant
§15.231(a)(1)	Manually	Compliant
§15.231(a)(2)	automatically	N/A
§15.231(a)(3)	periodic	N/A
§15.231(a)(4)	emergency(alarm)	N/A
§15.231(a)(5)	security	N/A
§15.231(b)	Average Factor	N/A
§15.231(b) & §15.209	Field Strength of Fundamental and Spurious Emission	Compliant
§15.231(c)	Bandwidth	Compliant
§15.231(d)	Frequency Tolerance	N/A
§15.231(e)	Field Strength(periodic trasmitter)	N/A
§15.207	Conducted Emission	N/A

6. TEST FACILITY

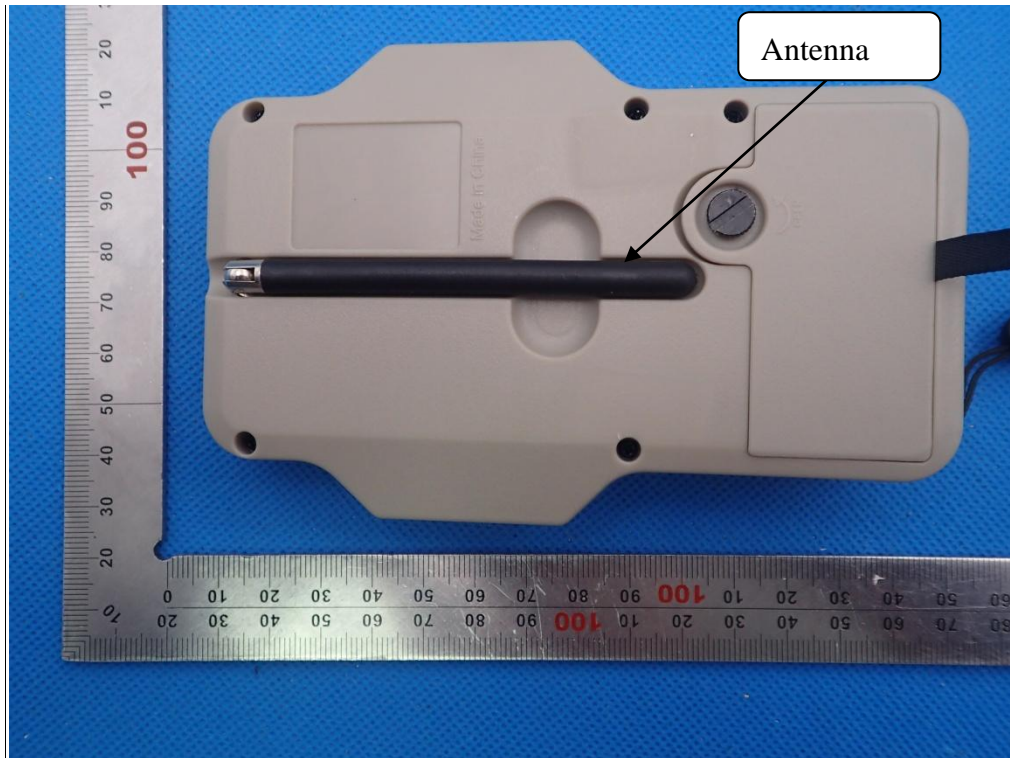
Site	Dongguan Precise Testing Service Co., Ltd.
Location	Building D,Baoding Technology Park,Guangming Road2,Dongcheng District, Dongguan, Guangdong, China,
FCC Registration No.	371540
Description	The test site is constructed and calibrated to meet the FCC requirements in documents ANSI C63.4:2014.

Radiated Emission Test Site					
Name of Equipment	Manufacturer	Model Number	Serial Number	Last Calibration	Due Calibration
EMI Test Receiver	Rohde & Schwarz	ESCI	101417	July 3, 2016	July 2, 2017
Trilog Broadband Antenna (25M-1GHz)	SCHWARZBECK	VULB9160	9160-3355	July 3, 2016	July 2, 2017
Signal Amplifier	SCHWARZBECK	BBV 9475	9745-0013	July 3, 2016	July 2, 2017
RF Cable	SCHWARZBECK	AK9515E	96221	July 3, 2016	July 2, 2017
3m Anechoic Chamber	CHENGYU	966	PTS-001	June 2, 2017	June 1, 2018
MULTI-DEVICE Positioning Controller	Max-Full	MF-7802	MF780208339	N/A	N/A
Active loop antenna (9K-30MHz)	Schwarzbeck	FMZB1519	1519-038	June 2, 2017	June 1, 2018
Spectrum analyzer	Agilent	E4407B	MY46185649	June 2, 2017	June 1, 2018
Horn Antenna (1G-18GHz)	SCHWARZBECK	BBHA9120D	9120D-1246	June 2, 2017	June 1, 2018

7. ANTENNA REQUIREMENT

According to §15.203, an intentional radiator shall be designed to ensure that no antenna other than that furnished by the responsible party shall be used with the device.

The EuT has fixed antenna, which accordance to the above sections, is considered sufficient to comply with the provisions of these sections. Please see EuT photo for details.



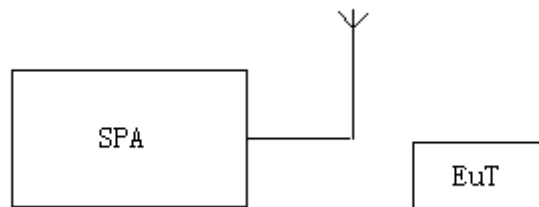
The requirements of section 15.203 are **FULFILLED**.

8. PROVISION FOR MOMENTARY OPERATION

8.1 MEASUREMENT PROCEDURE

1. Set the parameters of SPA as below:
Centre frequency = Operation Frequency
RBW=1MHz, VBW=3MHz
Span: 0Hz
Sweep time: 10S
2. Set the EUT to transmit by manually operated. Use the “View” function of SPA to find the transmission time of being released.
3. Record the data and Reported.

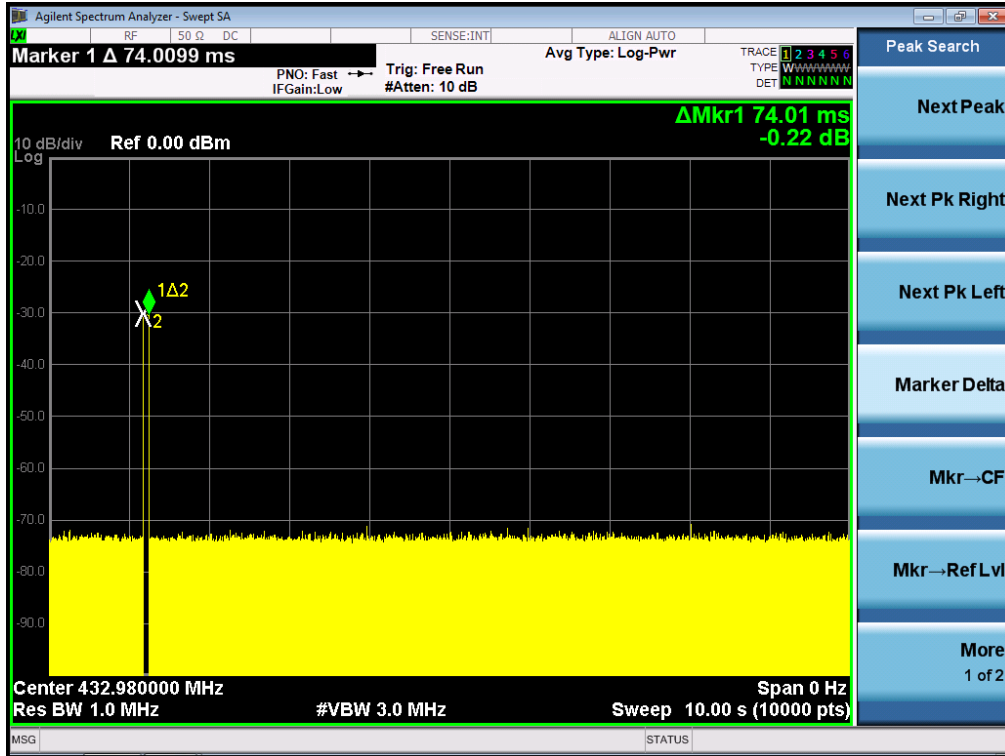
8.2 TEST SETUP



8.3 TEST RESULT

Test Mode: EUT @ 432.98MHz for RF Transmitter

The time of stopping transmission after switch releasing (s)	Limit (s)
0.07401	5.00



Note: The shown transmission of 0.07401s = the a short time for press and release the button + time of stopping transmission after switch releasing

So the time of stopping transmission after switch releasing <5s

RESULT: PASS

9. RADIATED EMISSION

9.1. MEASUREMENT PROCEDURE

1. The EUT was placed on the top of the turntable 0.8 or 1.5 meter above ground. The phase center of the receiving antenna mounted on the top of a height-variable antenna tower was placed 3 meters far away from the turntable.
2. Power on the EUT and all the supporting units. The turntable was rotated by 360 degrees to determine the position of the highest radiation.
3. The height of the broadband receiving antenna was varied between one meter and four meters above ground to find the maximum emissions field strength of both horizontal and vertical polarization.
4. For each suspected emissions, the antenna tower was scan (from 1 M to 4 M) and then the turntable was rotated (from 0 degree to 360 degrees) to find the maximum reading.
5. Set the test-receiver system to Peak or CISPR quasi-peak Detect Function with specified bandwidth under Maximum Hold Mode.
6. For emissions above 1GHz, use 1MHz RBW and 3MHz VBW for peak reading. Place the measurement antenna away from each area of the EUT determined to be a source of emissions at the specified measurement distance, while keeping the measurement antenna aimed at the source of emissions at each frequency of significant emissions, with polarization oriented for maximum response. The measurement antenna may have to be higher or lower than the EUT, depending on the radiation pattern of the emission and staying aimed at the emission source for receiving the maximum signal. The final measurement antenna elevation shall be that which maximizes the emissions. The measurement antenna elevation for maximum emissions shall be restricted to a range of heights of from 1 m to 4 m above the ground or reference ground plane.
7. When the radiated emissions limits are expressed in terms of the average value of the emissions, and pulsed operation is employed, the measurement field strength shall be determined by averaging over one complete pulse train, including blanking intervals, as long as the pulse train does not exceed 0.1 seconds. As an alternative (provided the transmitter operates for longer than 0.1 seconds) or in cases where the pulse train exceeds 0.1 seconds, the measured field strength shall be determined from the average absolute voltage during a 0.1 second interval during which the field strength is at its maximum values.
8. If the emissions level of the EUT in peak mode was 3 dB lower than the average limit specified, then testing will be stopped and peak values of EUT will be reported, otherwise, the emissions which do not have 3 dB margin will be repeated one by one using the quasi-peak method for below 1GHz.
9. For testing above 1GHz, the emissions level of the EUT in peak mode was lower than average limit (that means the emissions level in peak mode also complies with the limit in average mode), then testing will be stopped and peak values of EUT will be reported, otherwise, the emissions will be measured in average mode again and reported.
10. In case the emission is lower than 30MHz, loop antenna has to be used for measurement and the recorded data should be QP measured by receiver. High - Low scan is not required in this case.

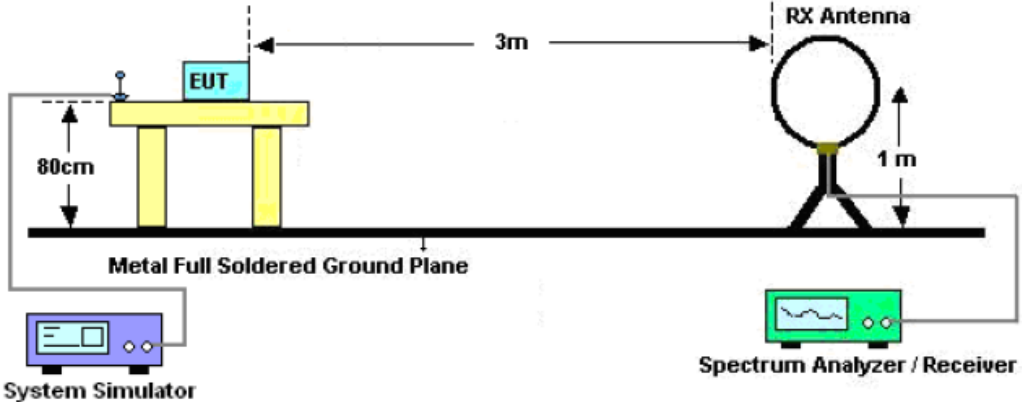
The following table is the setting of spectrum analyzer and receiver.

Spectrum Parameter	Setting
Start ~Stop Frequency	9KHz~150KHz/RBW 200Hz for QP
Start ~Stop Frequency	150KHz~30MHz/RBW 9KHz for QP
Start ~Stop Frequency	30MHz~1000MHz/RBW 120KHz for QP
Start ~Stop Frequency	1GHz~26.5GHz 1MHz/1MHz for Peak, 1MHz/10Hz for Average

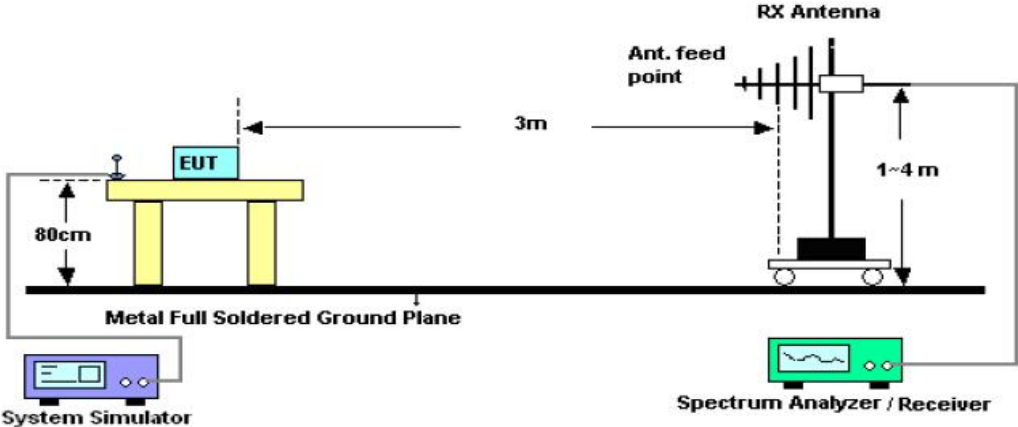
Receiver Parameter	Setting
Start ~Stop Frequency	9KHz~150KHz/RBW 200Hz for QP
Start ~Stop Frequency	150KHz~30MHz/RBW 9KHz for QP
Start ~Stop Frequency	30MHz~1000MHz/RBW 120KHz for QP

9.2. TEST SETUP

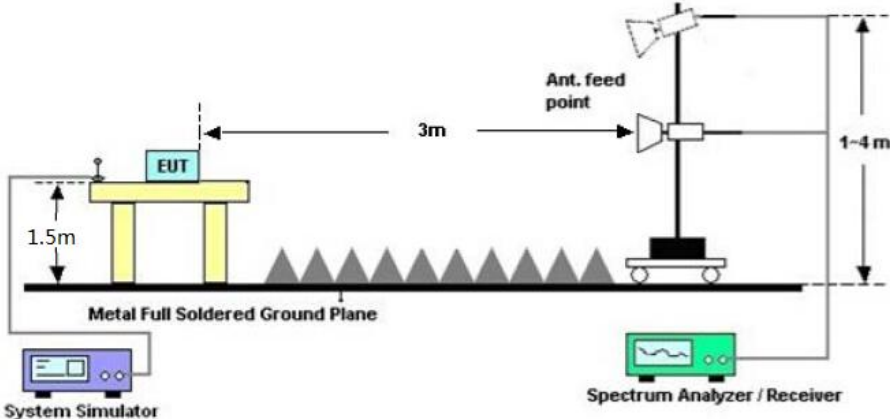
Radiated Emission Test-Setup Frequency Below 30MHz



RADIATED EMISSION TEST SETUP 30MHz-1000MHz



RADIATED EMISSION TEST SETUP ABOVE 1000MHz



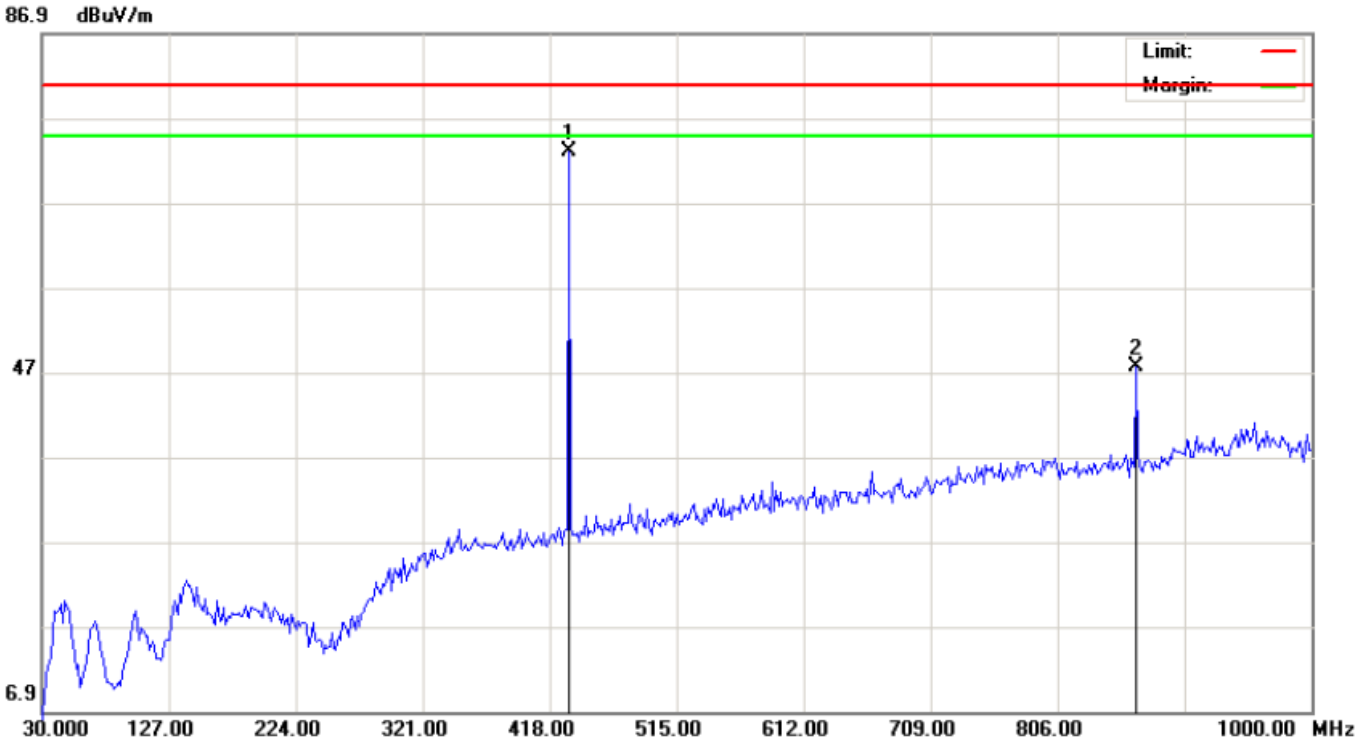
9.3. TEST RESULT

Test Mode: EUT @ 432.98MHz for RF Transmitter

RADIATED EMISSION BELOW 30MHz

No emission found between lowest internal used/generated frequencies to 30MHz.

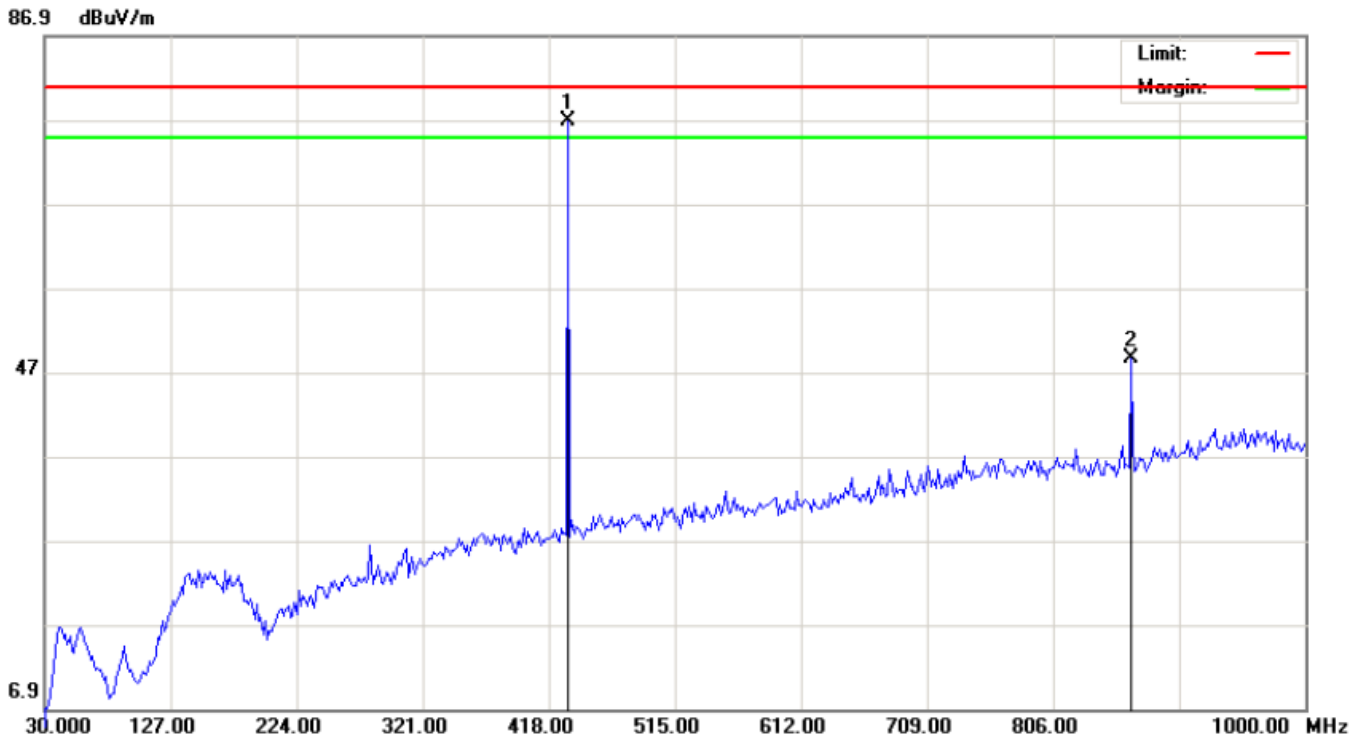
RADIATED EMISSION BELOW 1GHZ-Horizontal



PK list

Frequency MHz	Polarization	Reading dB(uV)	Factor dB (1/m)	Level dB(uV/m) PK	Limit dB(uV/m) AV	Margin dB	Pass/Fail	Height cm	Angle deg
432.98	H	53.04	20.06	73.10	80.79	-7.69	Pass	200.0	146.8
865.96	H	19.90	27.72	47.62	60.79	-13.17	Pass	200.0	63.2

RADIATED EMISSION BELOW 1GHZ-Vertical



PK list

Frequency MHz	Polarization	Reading dB(uV)	Factor dB (1/m)	Level dB(uV/m) PK	Limit dB(uV/m) AV	Margin dB	Pass/Fail	Height cm	Angle deg
432.987	V	56.77	20.06	76.83	80.79	-3.96	Pass	200.0	147.52
867.854	V	20.86	27.72	48.58	60.79	-12.21	Pass	200.0	64.96

RESULT: PASS

Note: 1. Factor=Antenna Factor + Cable loss - Amplifier gain, Margin=Measurement-Limit.

2. The "Factor" value can be calculated automatically by software of measurement system.

3. Emissions of frequency range from 1GHz to 4.33GHz have 20dB margin. No recording in the test report.

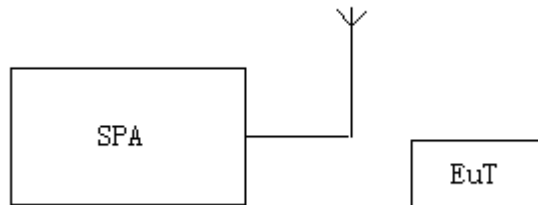
4. The peak value of the emission is less than the AVG limits, so the AVG value of the emission is deemed to comply with the AVG limits without testing.

10. BANDWIDTH

10.1. MEASUREMENT PROCEDURE

1. Set the parameters of SPA as below:
Centre frequency = Operation Frequency
RBW=1KHz
VBW=3KHz
Span: 100kHz
Sweep time: Auto
2. Set the EUT to continue transmitting mode. Allow the trace to stabilize. Use the “N dB down” function of SPA to define the bandwidth.
3. Record the plots and Reported.

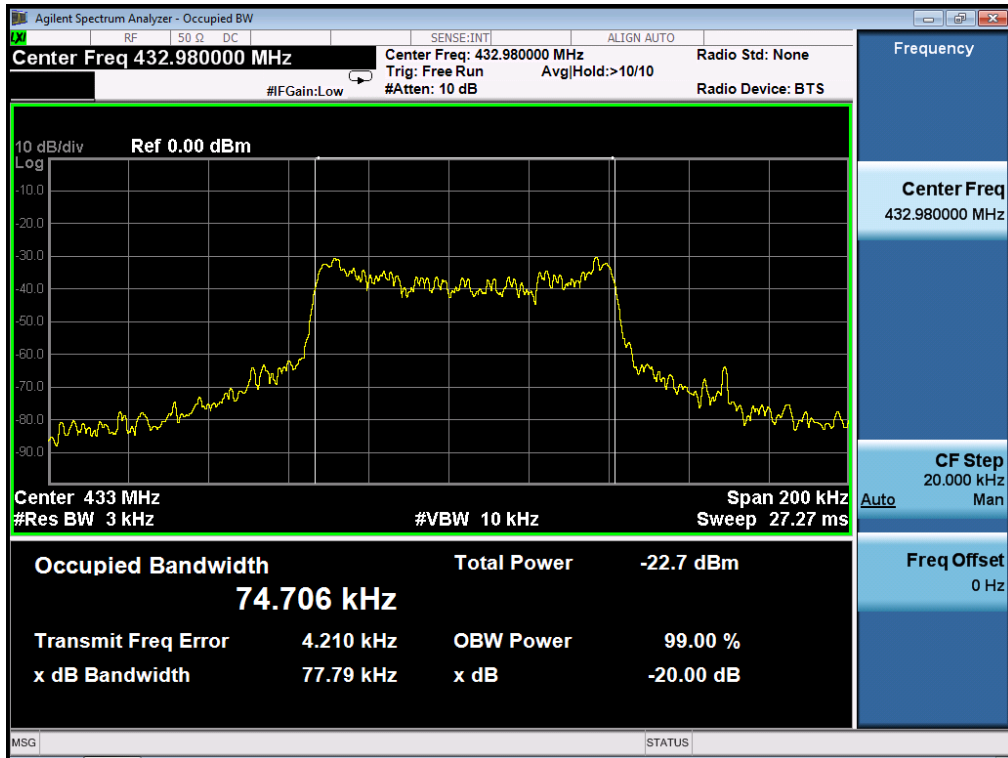
10.2. TEST SETUP



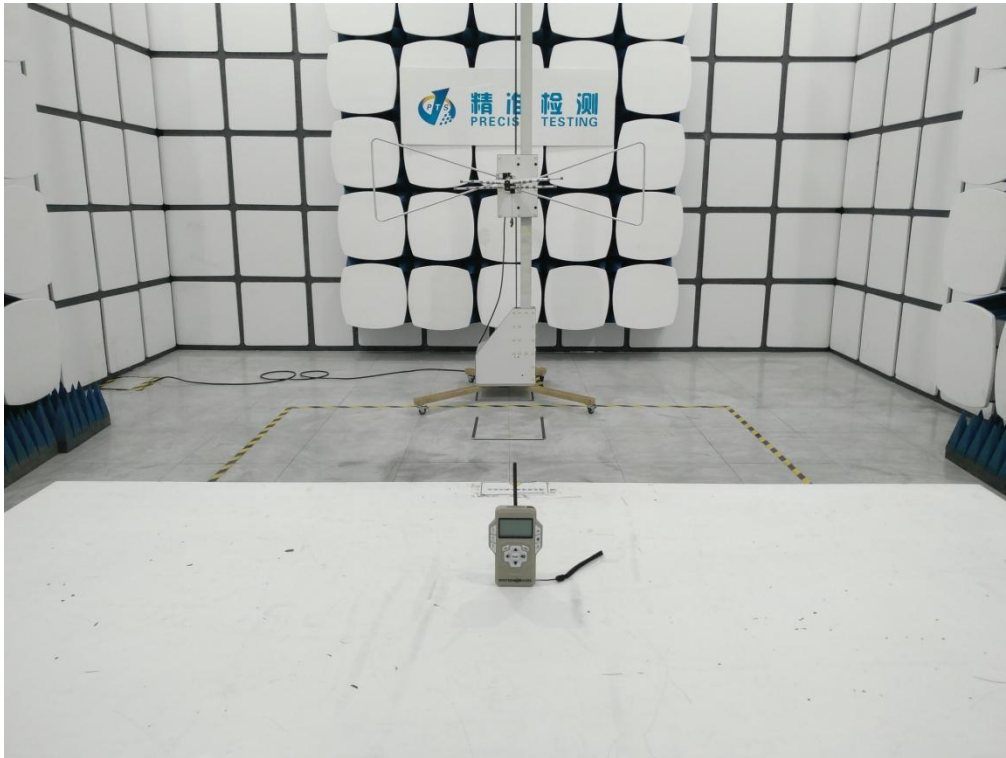
10.3. TEST RESULT

Test Mode: EUT @ 432.98MHz for RF Transmitter

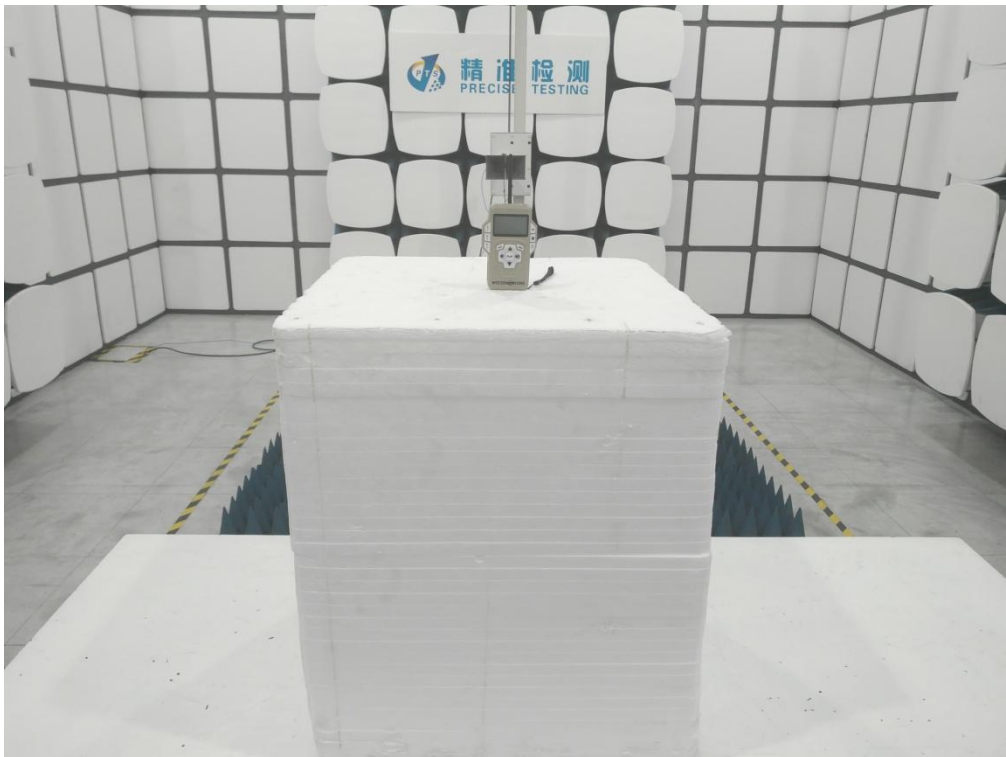
-20dB bandwidth	LIMIT	RESULT
77.79kHz	1082.45KHz	Pass
Note: Limit= Operation Frequency x0.25%		



APPENDIX A: PHOTOGRAPHS OF TEST SETUP
RADIATED EMISSION TEST SETUP BELOW 1GHz



RADIATED EMISSION TEST SETUP ABOVE 1GHz



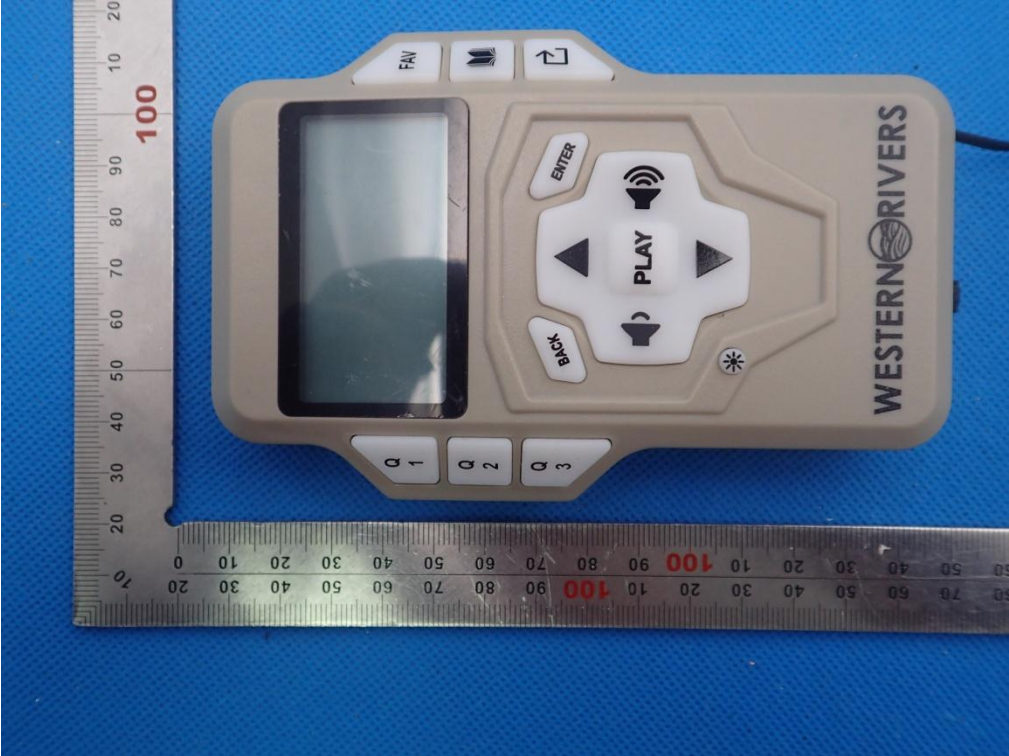
APPENDIX B: PHOTOGRAPHS OF EUT
TOP VIEW OF EUT



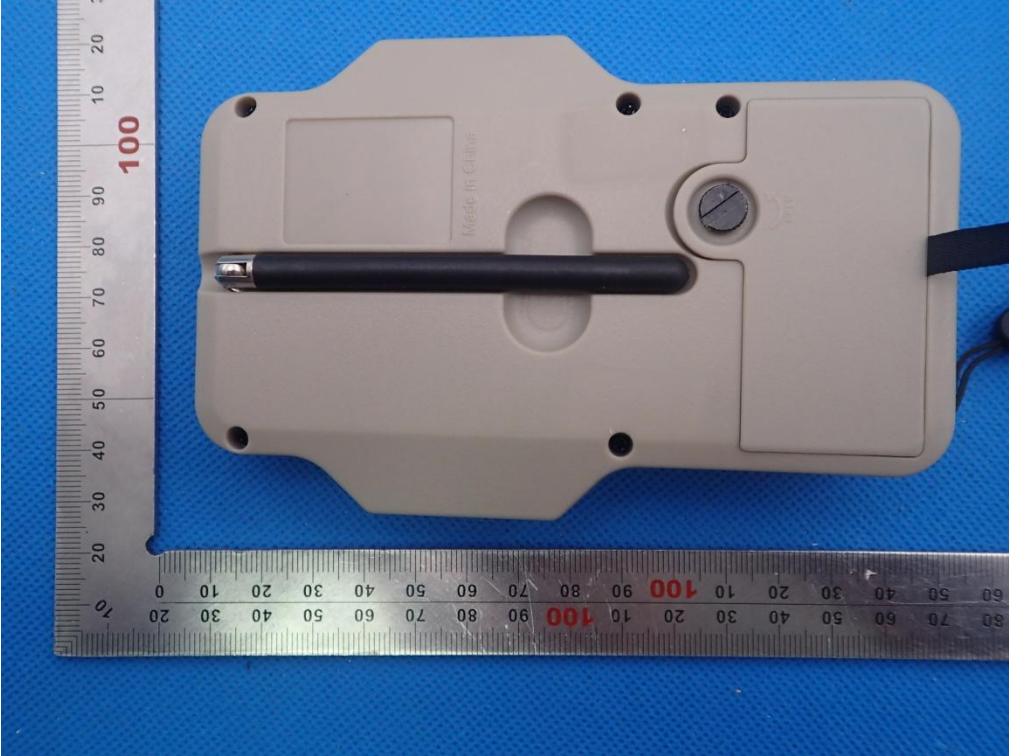
BOTTOM VIEW OF EUT



FRONT VIEW OF EUT



BACK VIEW OF EUT



LEFT VIEW OF EUT



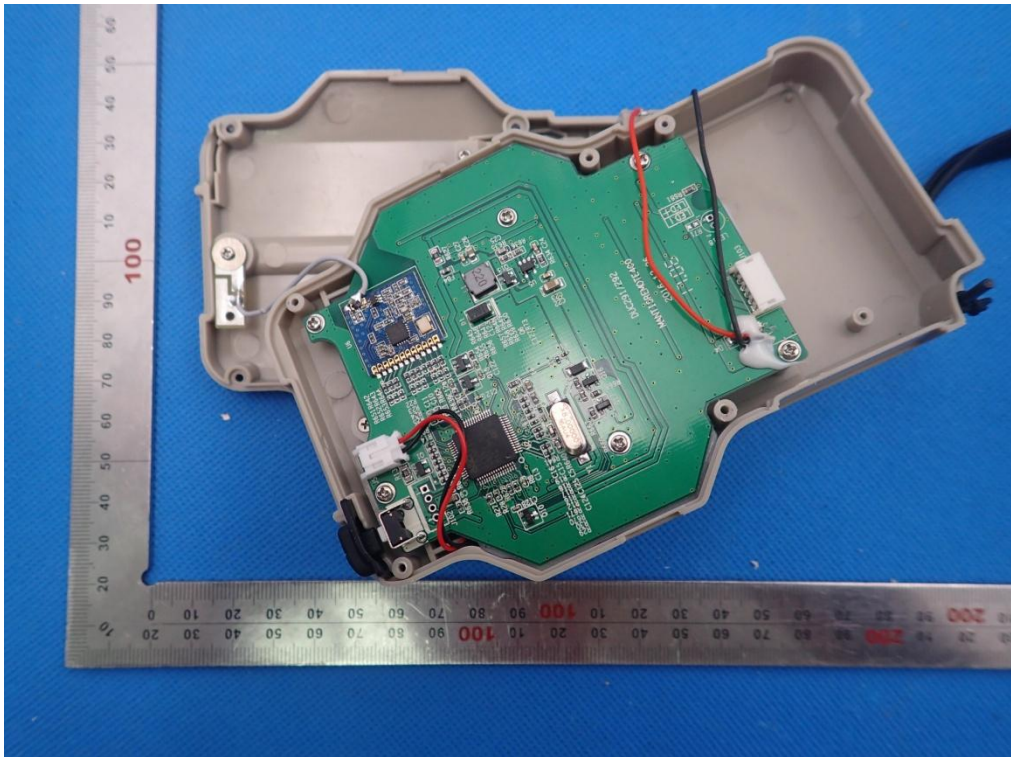
RIGHT VIEW OF EUT



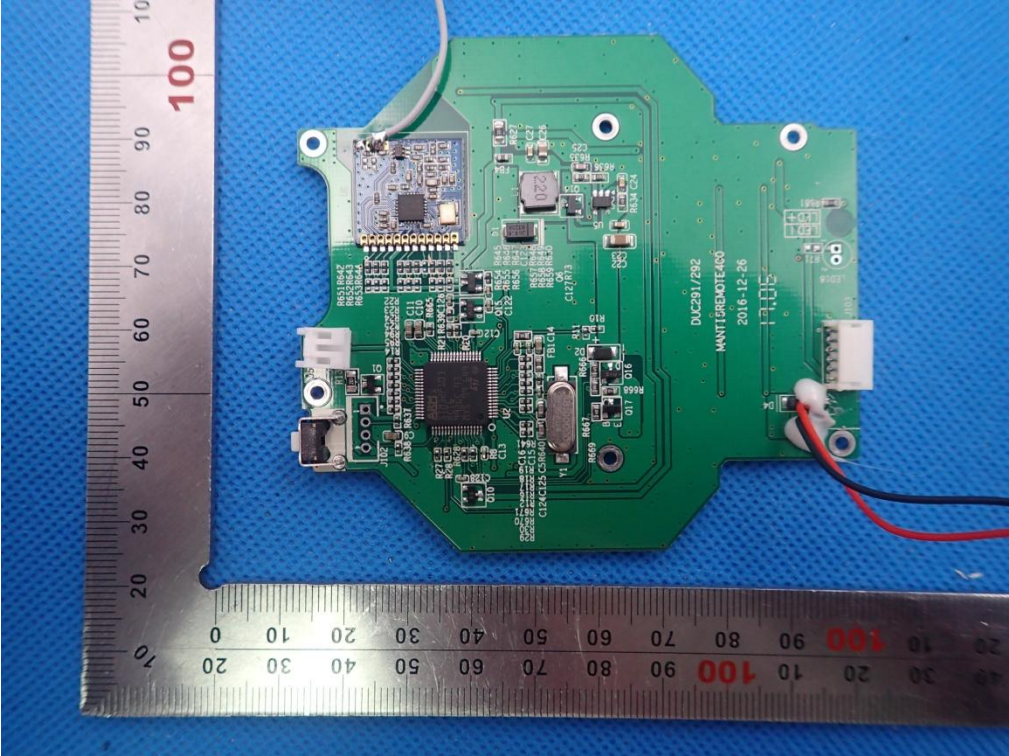
OPEN VIEW OF EUT-1



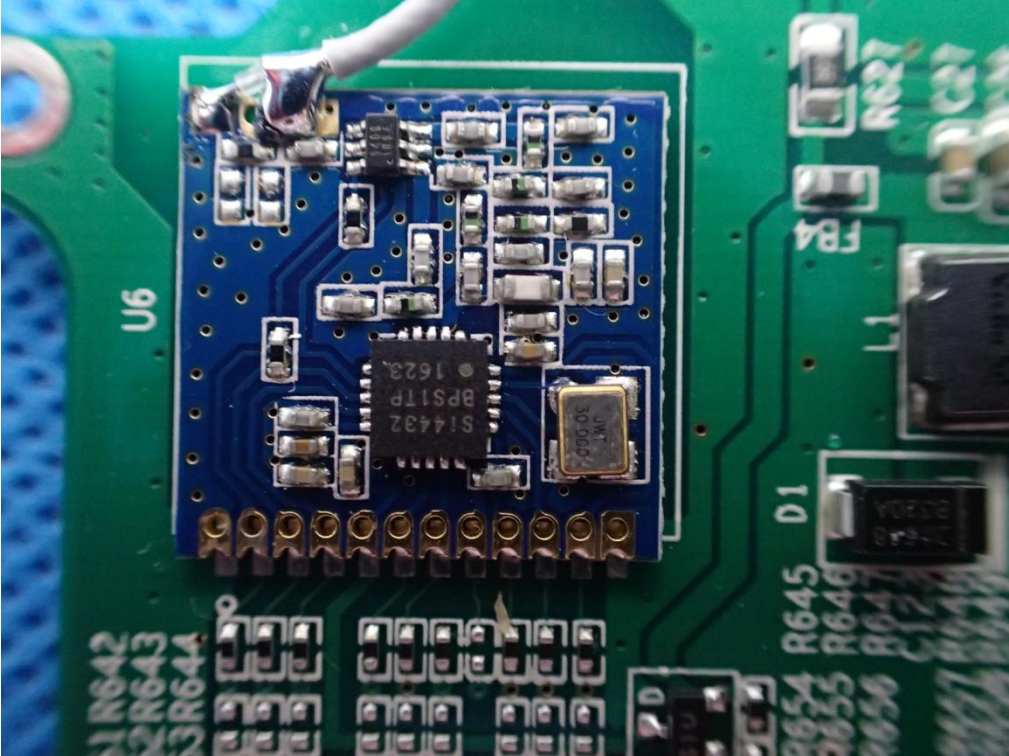
OPEN VIEW OF EUT-2



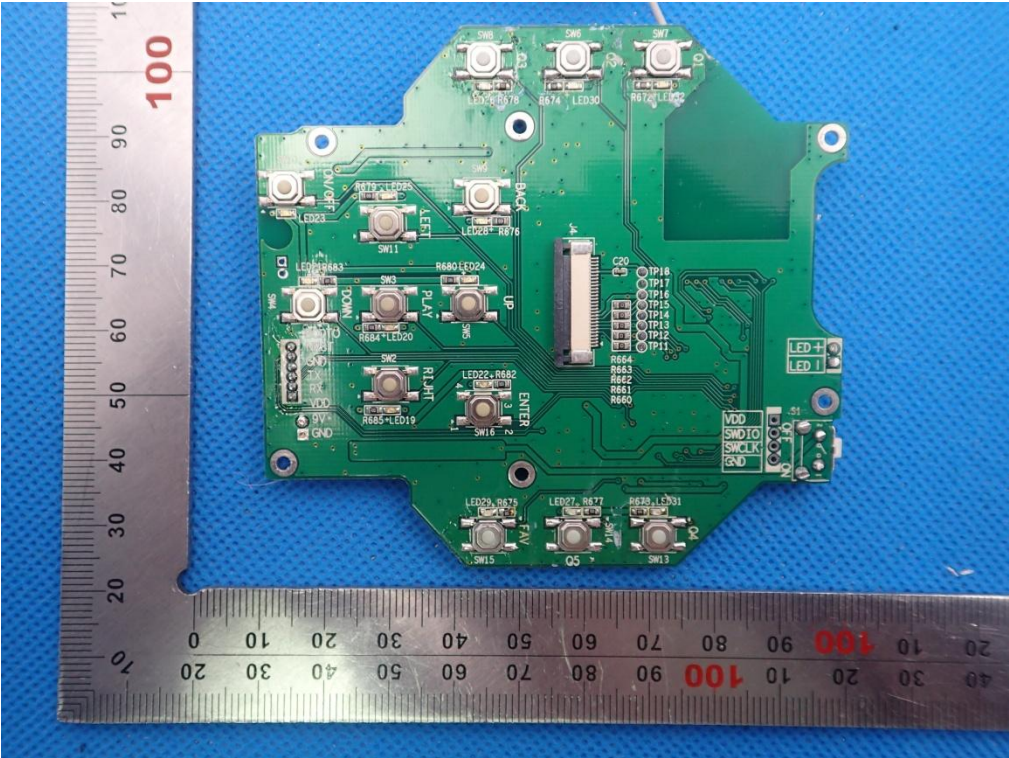
INTERNAL VIEW OF EUT-1



INTERNAL VIEW OF EUT-2



INTERNAL VIEW OF EUT-3



----END OF REPORT----