



Bandspeed AirMaestro 3100AG Access Point

User's Guide

PRELIMINARY

SAFETY AND REGULATORY NOTICES

FCC STATEMENT

The Bandspeed AirMaestro 3100AG Access Point has been tested and found to comply with the specifications for a Class B digital device, pursuant to Part 15 of the FCC Rules.

Operation is subject to the following two conditions:

- 1) This device may not cause harmful interference, and
- 2) This device must accept any interference received, including interference that may cause undesired operation.

These limits are designed to provide reasonable protection against harmful interference in a residential installation. This equipment generates, uses, and can radiate radio frequency energy and, if not installed and used according to the instructions, may cause harmful interference to radio communications. However, there is no guarantee that interference will not occur in a particular installation. If this equipment does cause harmful interference to radio or television reception, which is found by turning the equipment off and on, the user is encouraged to try to correct the interference by one or more of the following measures:

- Reorient or relocate the receiving antenna;
- Increase the separation between the equipment or devices;
- Connect the equipment to an outlet other than the receiver's;
- Consult a dealer or an experienced radio/TV technician for assistance;

FCC Caution: Any change or modification to the product not expressly approved by Bandspeed could void the user's authority to operate the device.

FCC Caution: Operation within the 5150 to 5250GHz band is restricted to indoor use only.

FCC RF Radiation Exposure Statement: To comply with the FCC and ANSI C95.1 RF exposure limits, the antenna(s) for this device must comply with the following:

- Access points with 2.4 GHz or 5 GHz integrated antenna must operate with a separation distance of at least 20 cm from all persons using the cable provided and must not be co-located or operating in conjunction with any other antenna or transmitter.
- End-users must be provided with specific operations for satisfying RF exposure compliance.

Note: Dual antennas used for diversity operation are not considered co-located.

Canadian Department of Communications Industry Canada (IC) Notice:

This Class B digital apparatus complies with Canadian ICES-003 and RSS-210. Cet appareil numérique de la classe B est conforme à la norme NMB-003 et CNR-210 du Canada.

"To prevent radio interference to the licensed service, this device is intended to be operated indoors and away from windows to provide maximum shielding. Equipment (or its transmit antenna) that is installed outdoors is subject to licensing."

" Pour empêcher que cet appareil cause du brouillage au service faisant l'objet d'une licence, il doit être utilisé à l'intérieur et devrait être placé loin des fenêtres afin de fournir un écran de blindage maximal. Si le matériel (ou son antenne d'émission) est installé à l'extérieur, il doit faire l'objet d'une licence. "

PRELIMINARY

Important Factory Defaults

Here are the factory defaults that you may need to get your AirMaestro 3100AG AP up and running on your local network. The defaults were chosen to provide quick initial access to the system and you will likely want to change some of them.

Bandspeed recommends that you change your admin/root password immediately and that you configure some level of security. These Quick Start topics will be covered in later sections.

IP address	DHCP (need a DHCP server on Ethernet network)
admin/root password	Bandspeed
SSID	Bandspeed
Frequency band	802.11b/g 2.4GHz on WIF 1, 802.11 a 5.0GHz on WIF 3, background monitoring on WIF 2.
Channels	Automatic Intelligent Channel Selection
Security	None
Serial Port	115,200 baud, 8 data bits, no parity bits, 1 stop bit, no flow-control, null-modem cable

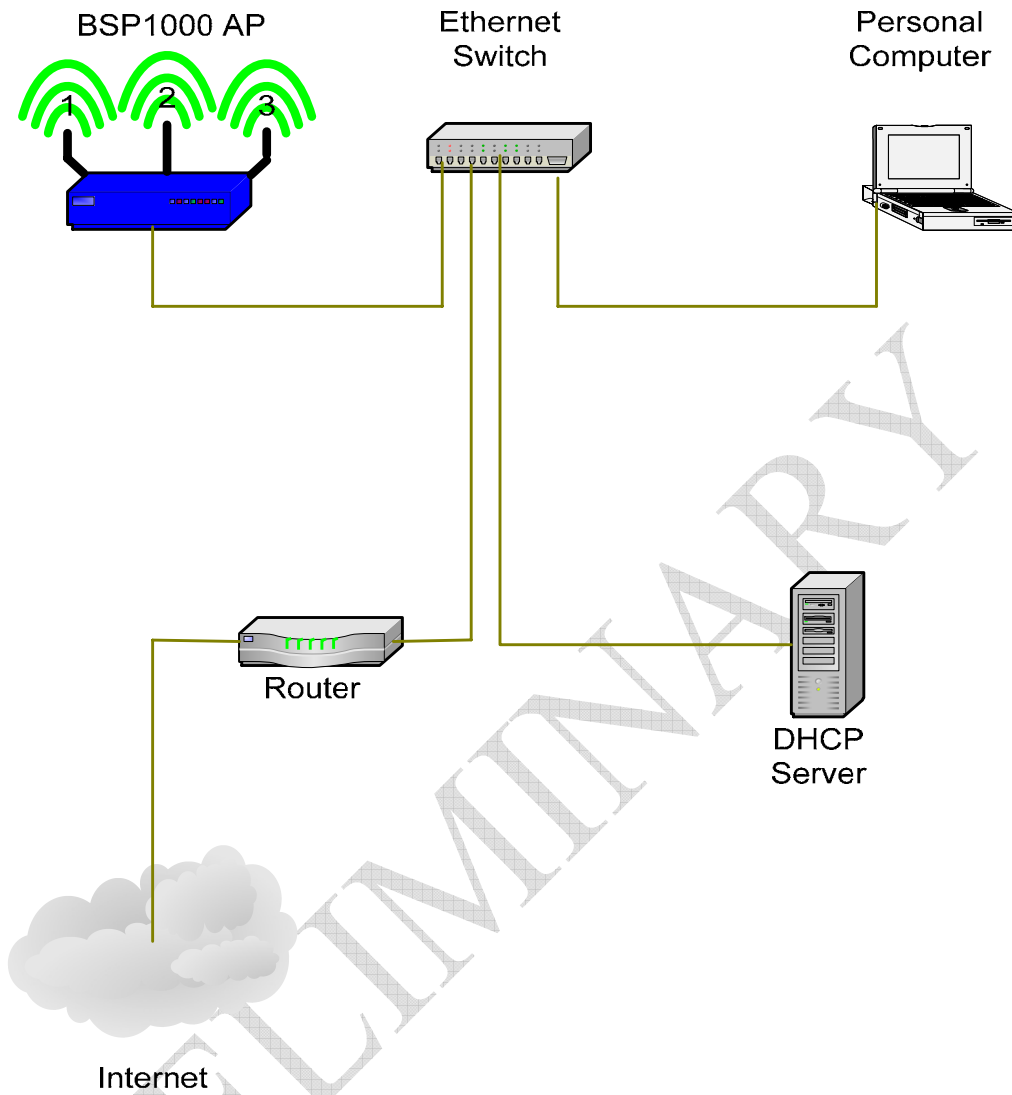
Configuring AirMaestro 3100AG IP Address Over Ethernet

The AirMaestro 3100AG is configured with DHCP-assigned IP address at the factory (see Important Factory Defaults). You can access the AirMaestro 3100AG's configuration web page by creating an isolated network with a personal computer, a DHCP server, an Ethernet switch (or hub) and the AirMaestro 3100AG in one of the configurations shown using a standard CAT-5 cable with RJ-45 connectors.

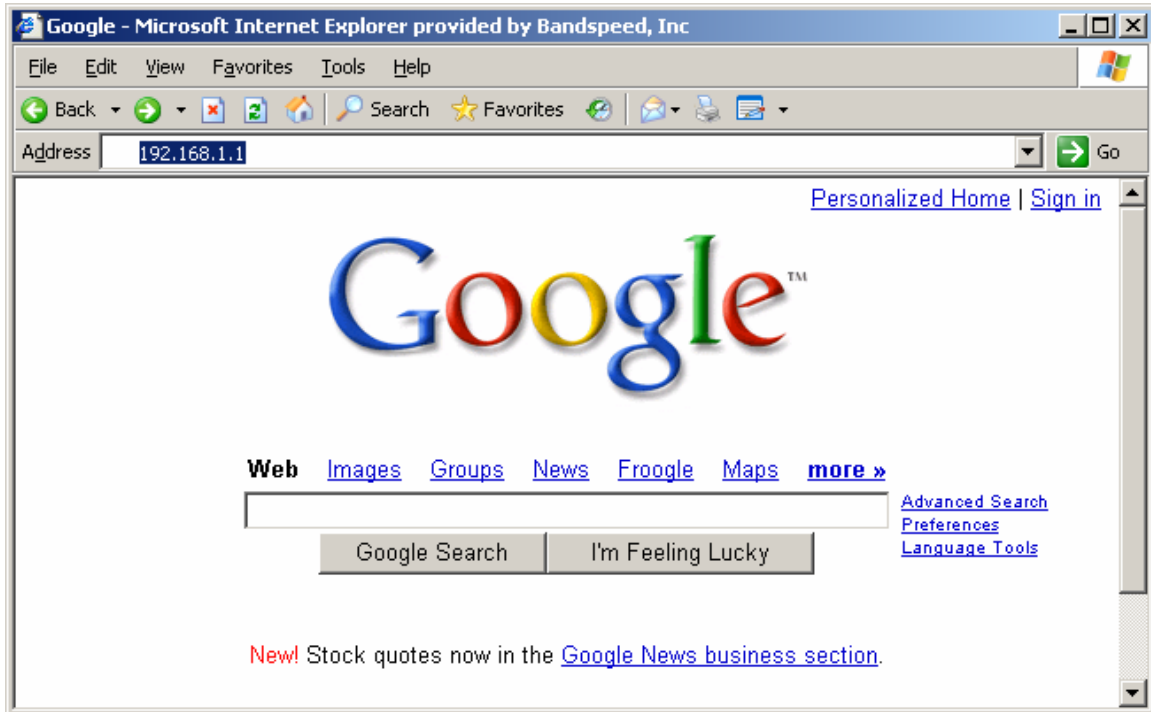
To determine the IP address of the AirMaestro 3100AG, run the Bandspeed Management Console application and it will display details information about AirMaestro 3100AG systems.

Figure 1: Possible Ways to Configure AirMaestro 3100AG's IP Address over Ethernet

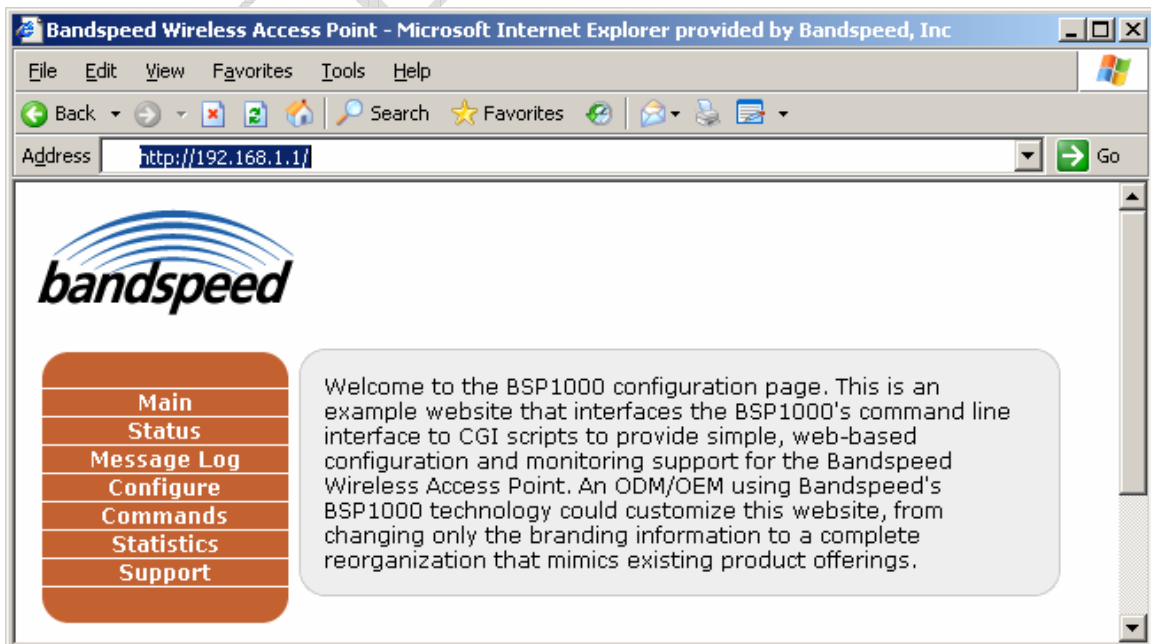
PRELIMINARY



Launch your personal computer's web browser, enter the IP address (see Important Factory Defaults) in the "Address" field and press <Enter>.



When prompted for user name and password, enter "admin" as the user name and the factory default password (see Important Factory Defaults) as the password. You will see the AirMaestro 3100AG configuration home page (below).



Select Configure at the main menu and the configuration page will appear (below).

bandspeed

- ▶ System
- ▶ TCP/IP
- ▶ SNMP
- ▶ QoS
- ▶ Date/Time
- ▶ VLAN
- ▶ DHCP
- ▶ Ethernet
- ▶ DFS
- ▶ Filter
- ▶ HTTP
- ▶ Wireless Sectors
- ▶ RRM
- ▶ Password
- ▶ RADIUS
- ▶ LnL
- ▶ TPC

CONFIGURE: System

MAC Address: 00:06:B8:00:01:02
Country: USA
Indoor/Outdoor: Disable
Allow Management of AP from STA: Enable
Switch ALE Aging Timer (10 - 1,000,000 in seconds): 300
Telnet: Enable
AP Security Mode: None

WEP:

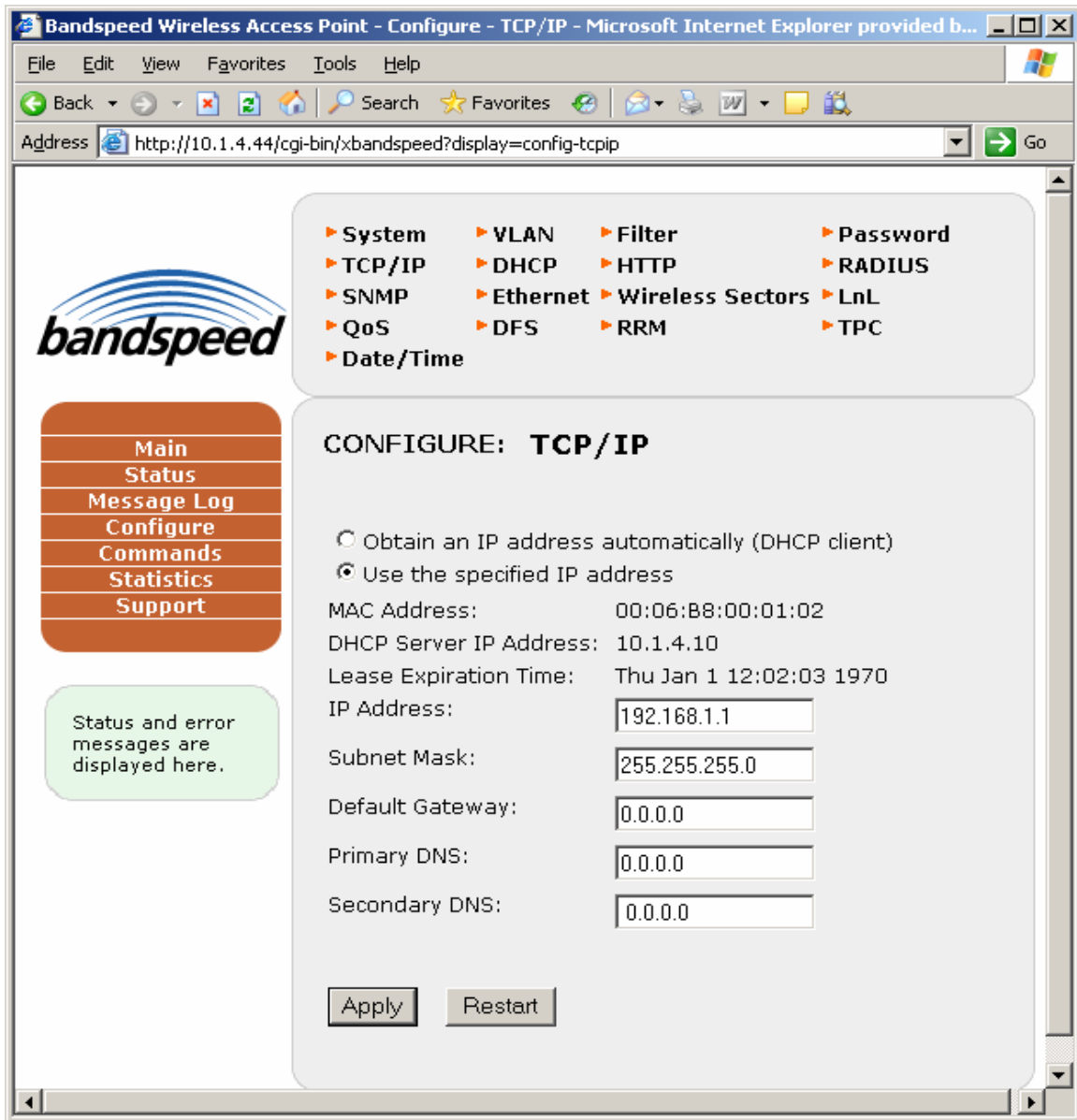
WEP Key Select: 1
WEP Key Length: 64 bits
WEP Key 1: 31:32:33:34:35
WEP Key 2: 31:32:33:34:35
WEP Key 3: 31:32:33:34:35
WEP Key 4: 31:32:33:34:35

WiFi Protected Access (WPA/WPA2):

Key Management Suite: 802.1X Pre-Shared Key
WPA Pre-Shared Key: wpa-passkey

Apply

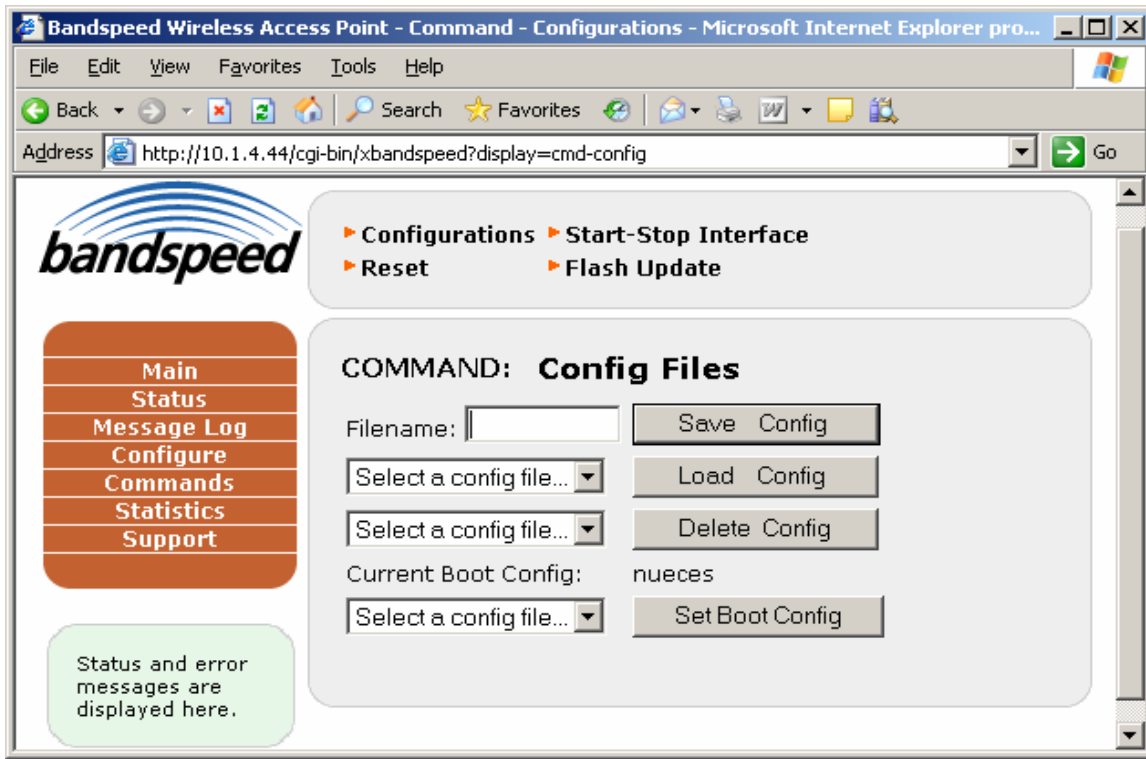
Select TCP/IP from the configuration bullet-list and the TCP/IP configuration page will appear (below).



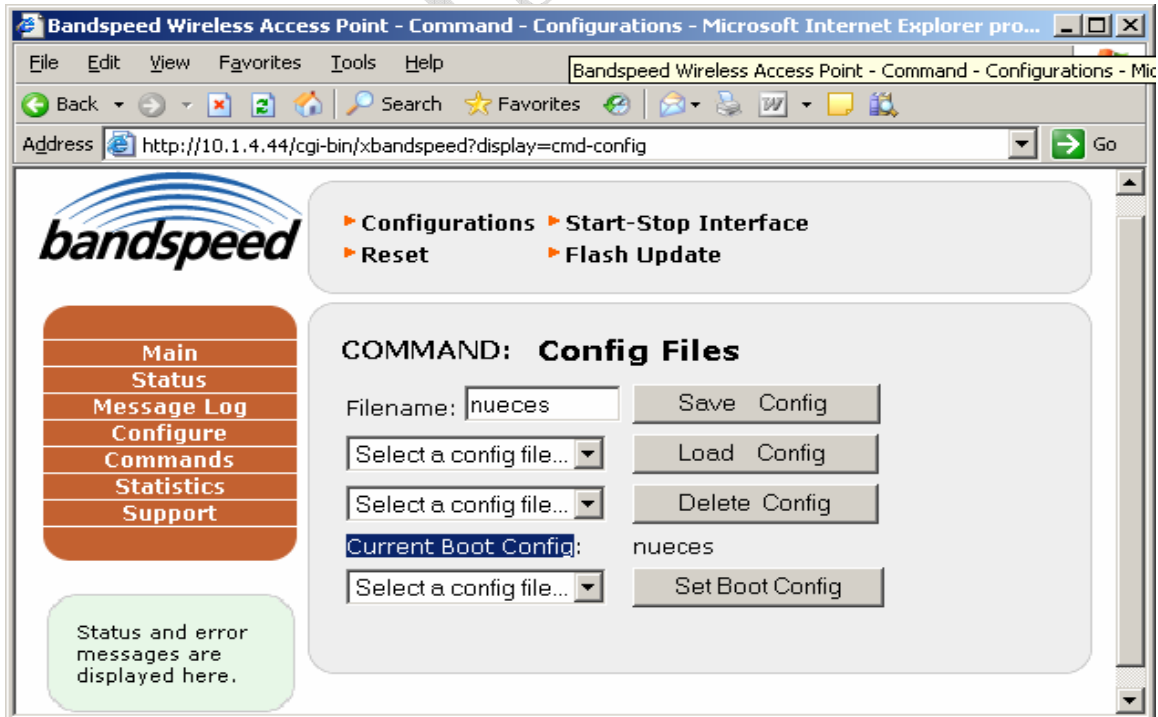
If you use a DHCP server on your network to assign IP addresses and you want the AirMaestro 3100AG to obtain its IP address from the DHCP server, select “Obtain an IP address automatically (DHCP client)”, then press [Apply].

You will need to save this configuration change to make it persist across power-cycles, as shown below. Select Commands from the main menu and the Commands menu will appear.

The configuration change should be saved to the Current Boot Config (nueces in this case).

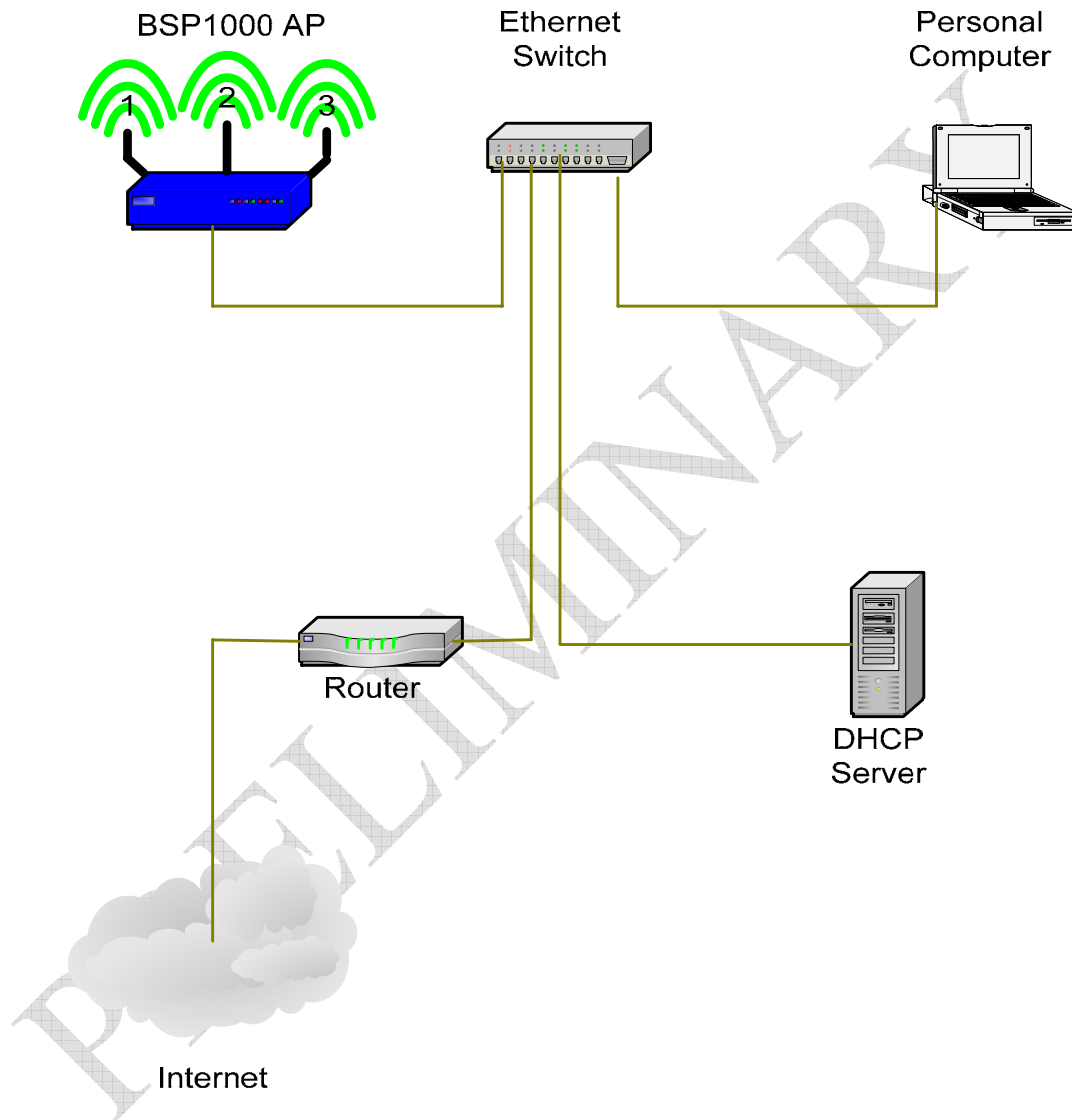


Enter nueces in the Filename text field and press [Save Config].



Before you can actually acquire an IP address from your DHCP server, you will need to connect the AirMaestro 3100AG to your enterprise network. Power-off the AirMaestro 3100AG.

Figure 2: Connection to enterprise network using automatic IP address assignment



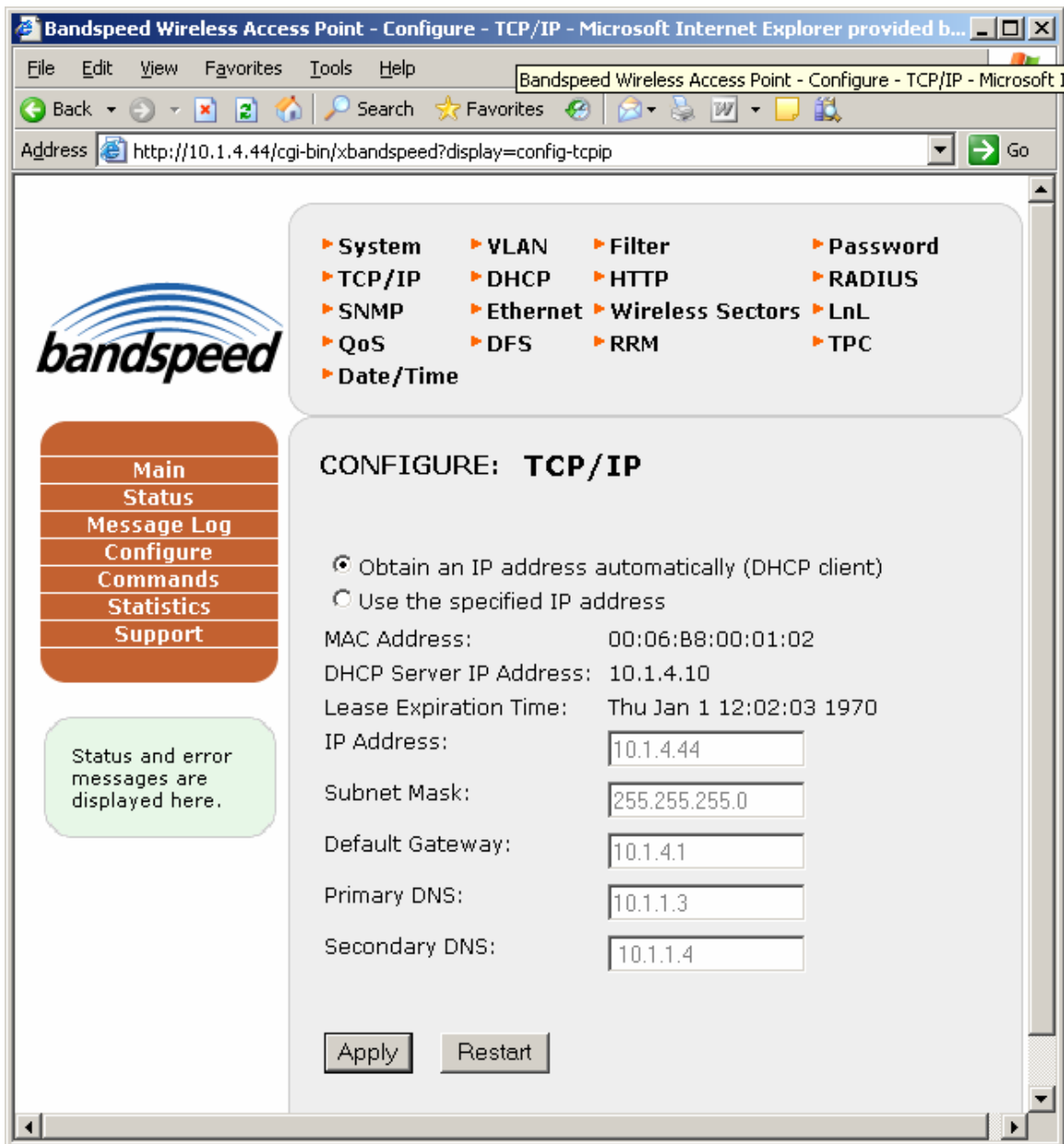
Connect the AirMaestro 3100AG's ethernet port to a switch on your enterprise network where the DHCP server can provide its IP address. Power-on the AirMaestro 3100AG. Test the connection by attempting to access the AirMaestro 3100AG's web page from a personal computer on the enterprise network.

NOTE: If you select this mode, you will need some way of determining what IP address the DHCP server has assigned to the AirMaestro 3100AG. You can log into the

AirMaestro 3100AG through the serial port and type “get tcpip<Enter>”. See Configuring AirMaestro 3100AG Over the Serial Port for more information.

PRELIMINARY

After restarting and logging in to the new automatically-obtained IP address, your Configure/TCP/IP page should look something like the one shown below.

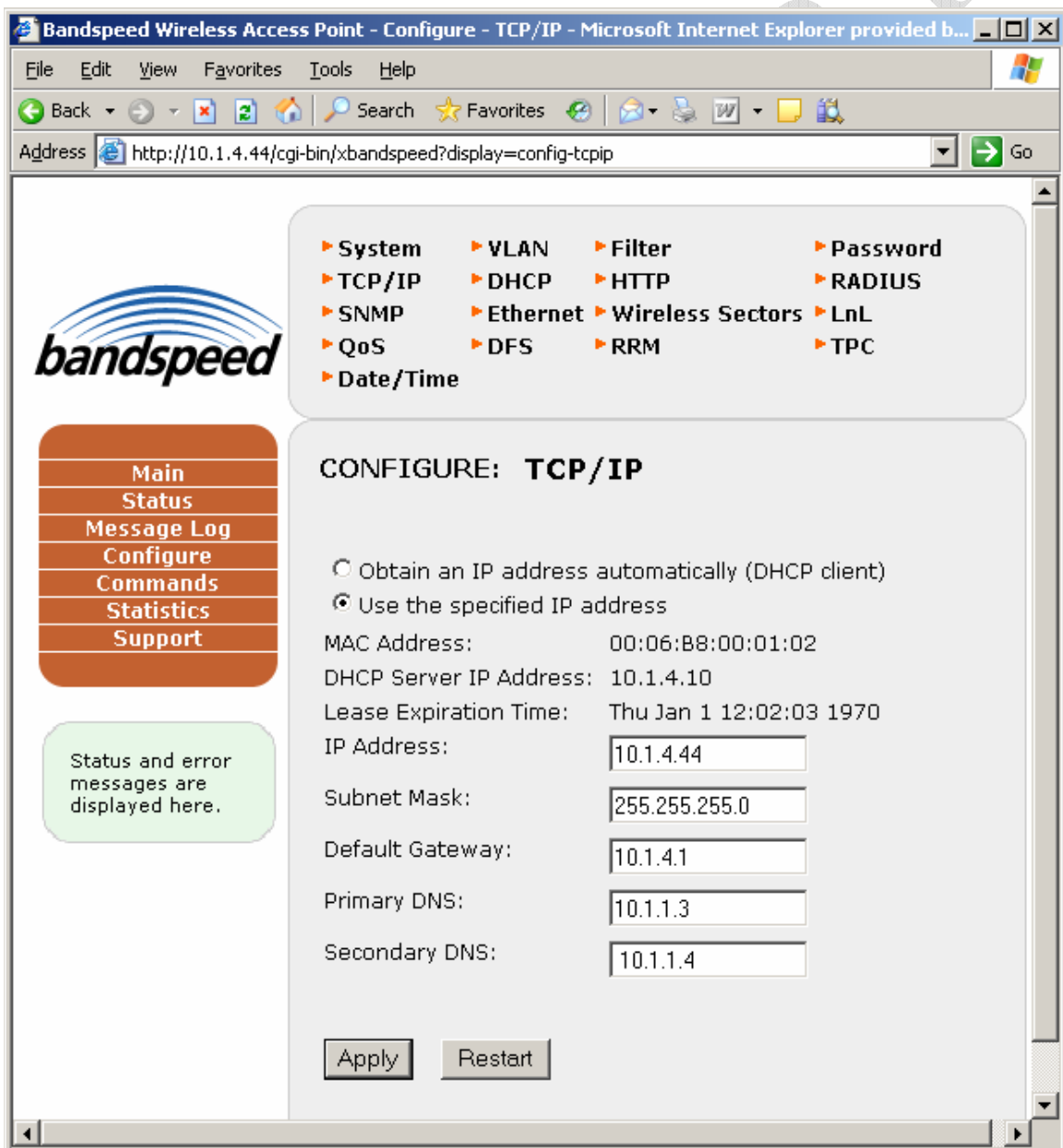


The DHCP server has not only provided an IP address dynamically, it has also provided a Default Gateway address and DNS server addresses dynamically. This will vary depending on how your network is set up. Have your network administrator verify the information that appears if you have reason to suspect there's something wrong.

Otherwise, you may have obtained a static IP address from your network administrator. If so, enter that IP address in the “IP Address” field. Your network administrator may have also provided a Subnet Mask, Default Gateway and DNS server addresses. If so enter them at this time. Press [Apply] when finished.

Save the configuration change as described in the dynamic IP address section, power-off the AirMaestro 3100AG and test the configuration as indicated in Figure 2.

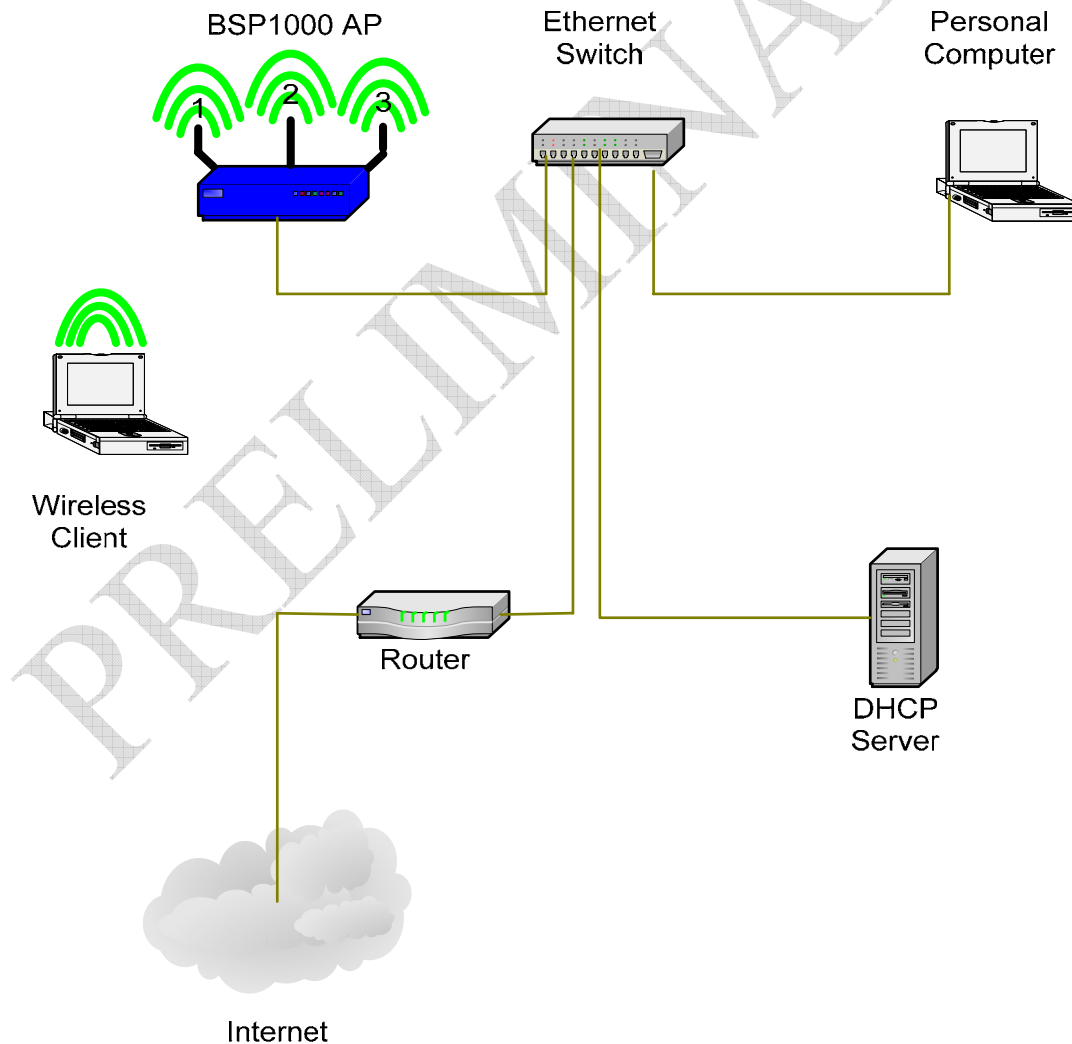
After restarting and logging in to the new static IP address, your Configure/TCP/IP page should look something like the one shown below.



Connecting a 2.4GHz Wireless Client (station)

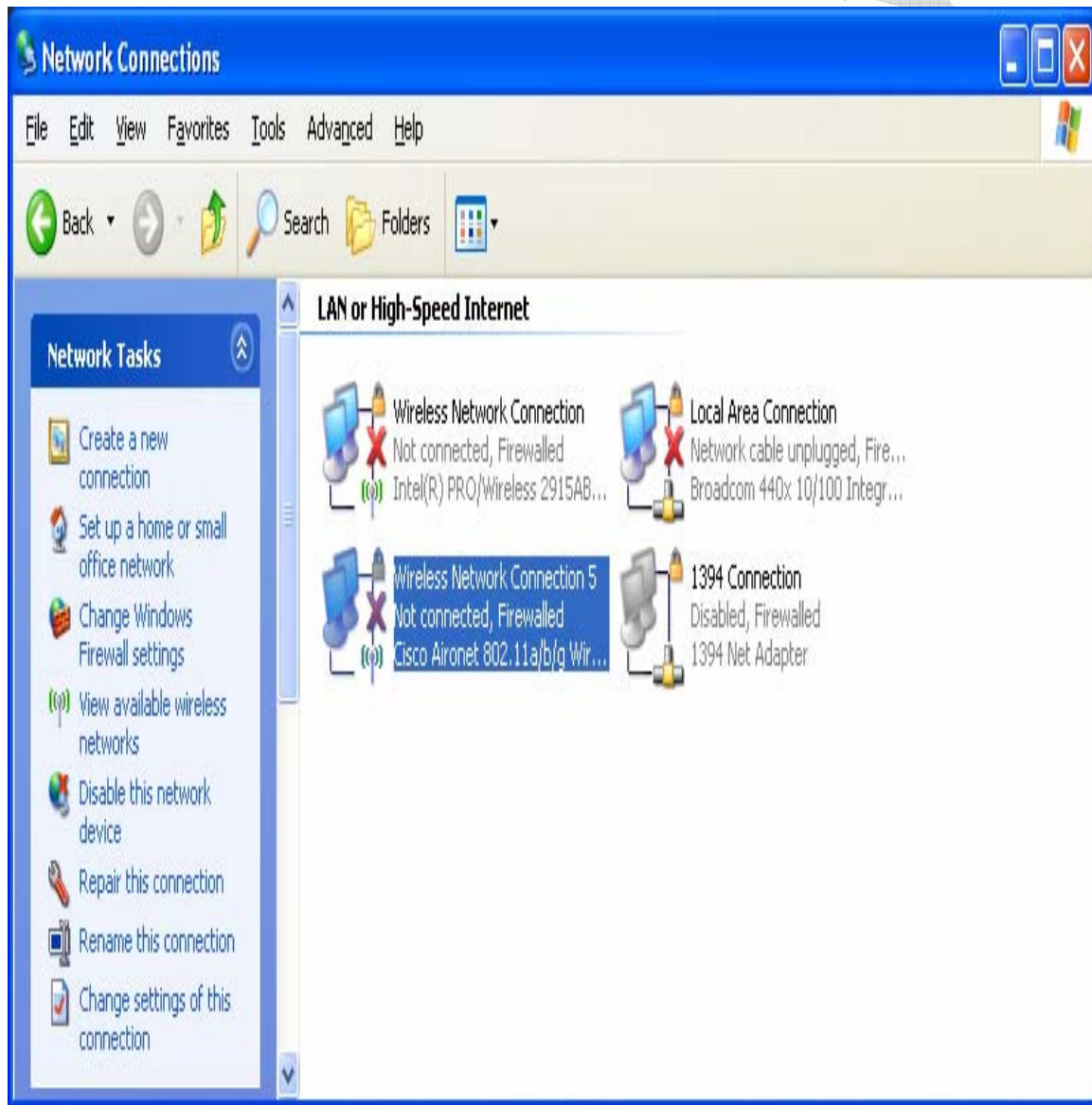
At this point, wireless clients should be able to “see” the AirMaestro 3100AG on the 2.4 GHz network. For the purposes of this guide, we’ll assume that the AirMaestro 3100AG SSID has been set to “QuickStart”. You do not need to change the SSID on your system for this test. If you choose not to change it, just substitute the AirMaestro 3100AG factory default SSID (see Important Factory Defaults) wherever you see “QuickStart”. For information on setting the AirMaestro 3100AG’s SSIDs, see Configuring SSIDs.

Figure 3: Connecting a Wireless Client Through the AirMaestro 3100AG AP

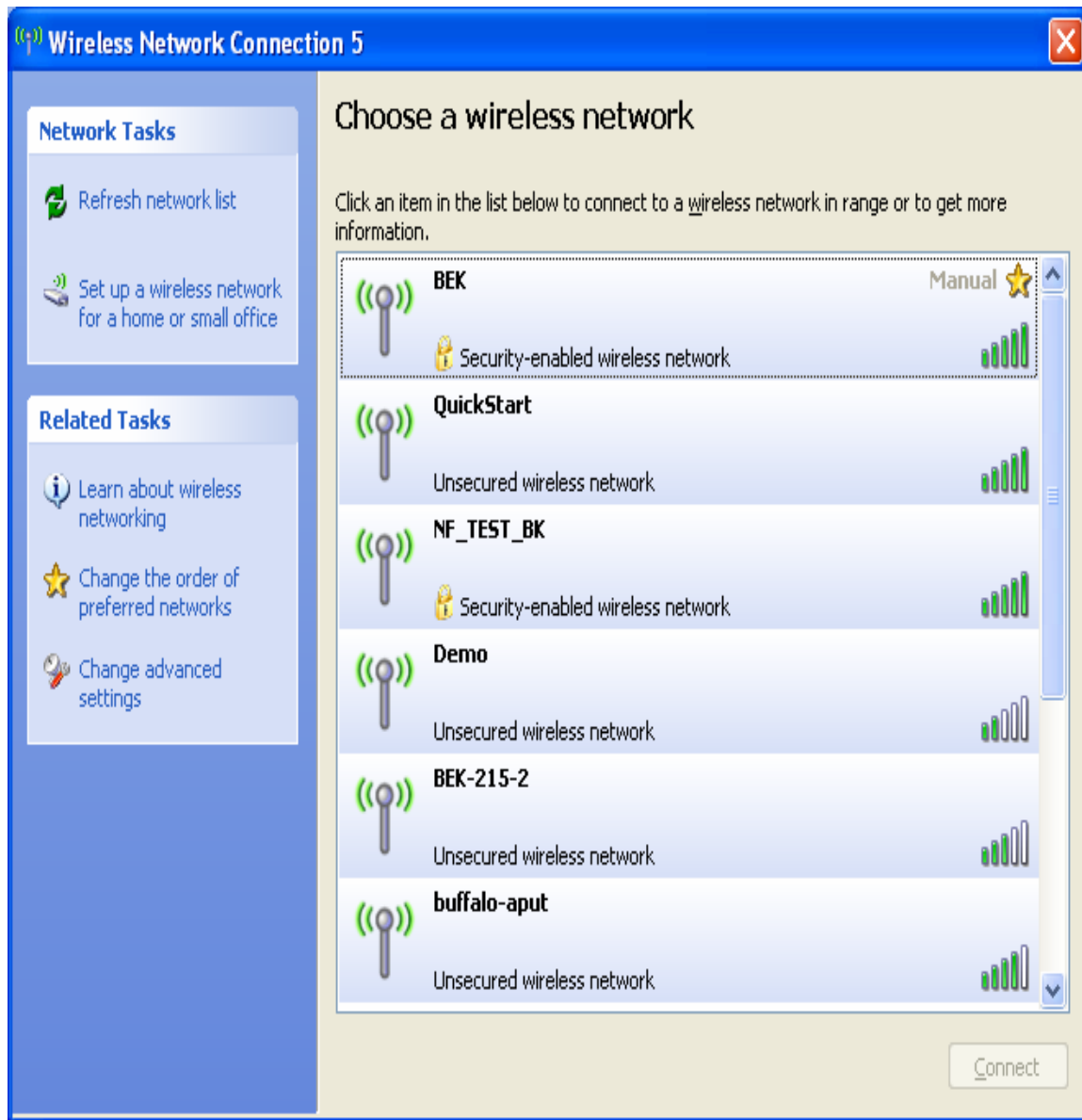


Your wireless client should have some sort of utility to “discover” APs and it can be configured to scan the 2.4GHz spectrum or the 5GHz spectrum or both. By default, the AirMaestro 3100AG is broadcasting its services in the 2.4GHz spectrum, supporting either .11b or .11g clients. If your client NIC supports .11b and/or .11g, its “discovery” utility should detect the AirMaestro 3100AG at the “QuickStart” SSID.

For a Windows XP client, select “Network Connections” in the Control Panel and highlight the wireless NIC you’re trying to connect through. You should see a screen something like the one below.



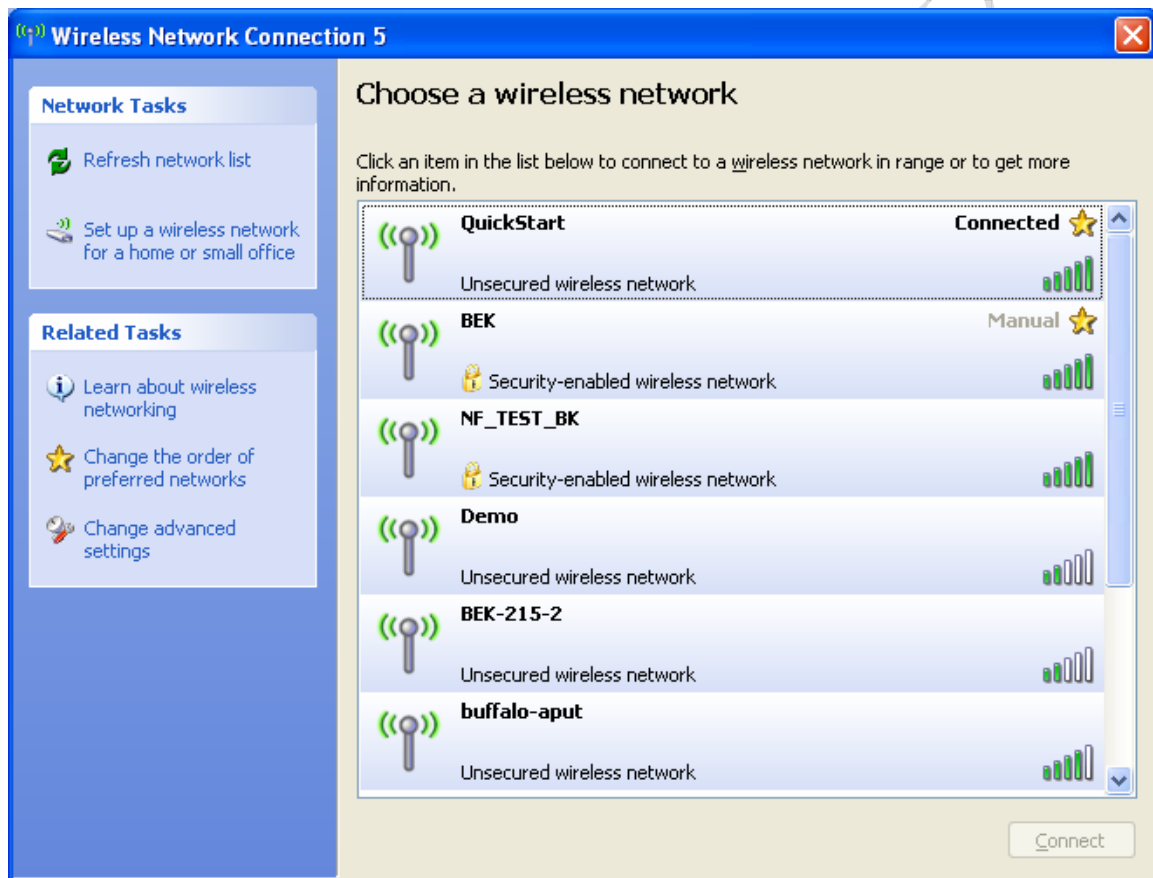
Select “View Available Wireless Networks” under “Network Tasks” and you’ll see a display something like this.



Under “Choose a wireless network”, you’ll see a list of the APs “discovered” through your wireless NIC. The AirMaestro 3100AG’s “QuickStart” SSID should appear in this list. If it doesn’t, try selecting “Refresh Network List” under “Network Tasks”. If the AirMaestro 3100AG’s SSID still doesn’t appear, contact Bandspeed for technical assistance.

Once your wireless client can “see” the AirMaestro 3100AG’s “QuickStart” SSID, you should be able to connect it to your enterprise network through the AirMaestro 3100AG.

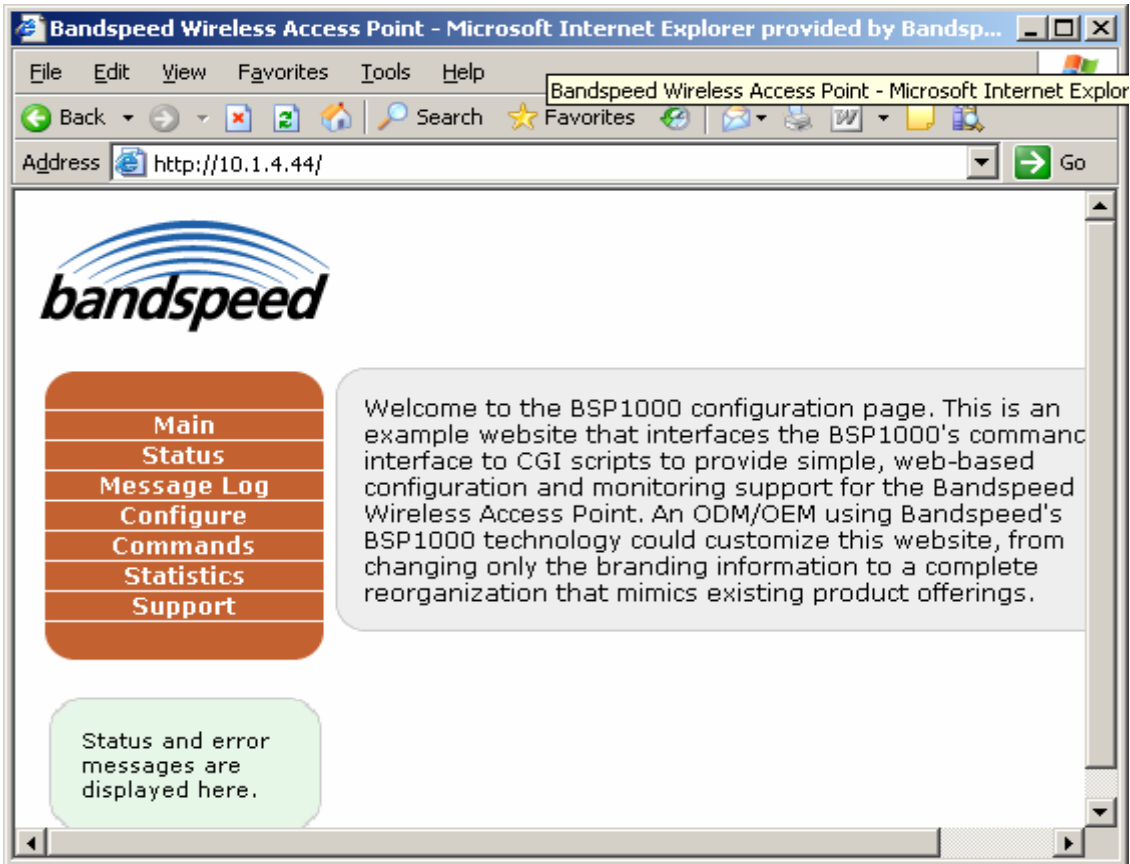
Continuing with a Windows XP client, highlight the AirMaestro 3100AG’s “QuickStart” entry in the list under “Choose a wireless network” (see previous paragraphs) and press [Connect]. Ignore the warning about unsecured networks for now and proceed with the connection. Shortly, the AirMaestro 3100AG’s “QuickStart” SSID should appear at the top of the “Choose a wireless network” list with a status of “Connected”.



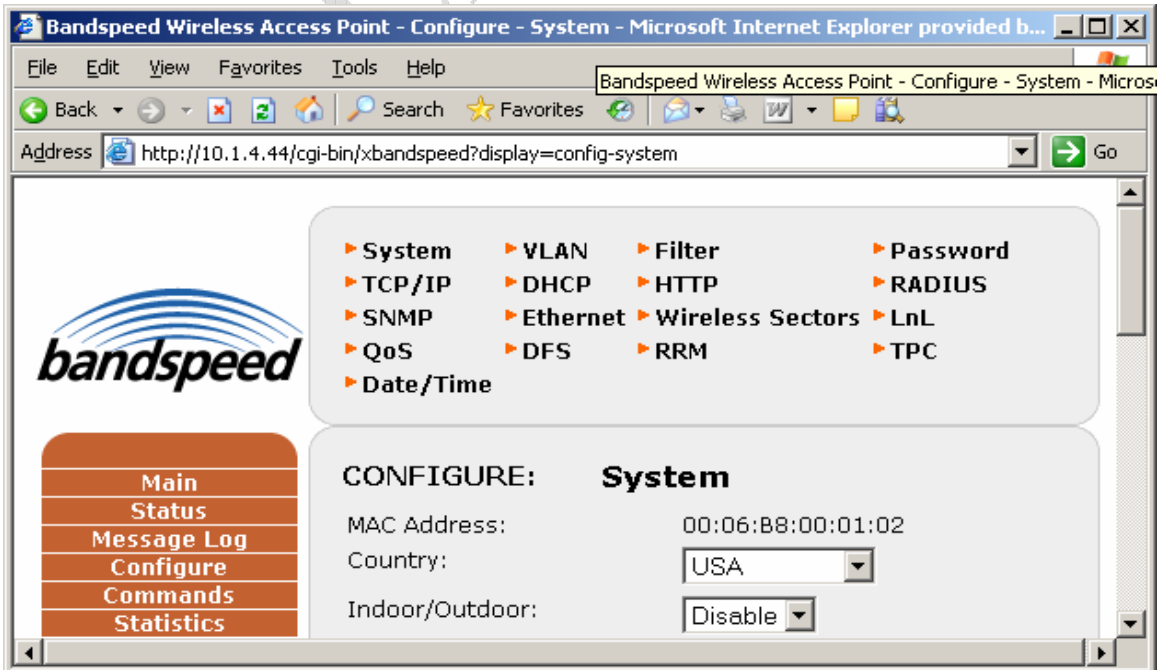
You should now be able to access your enterprise network from the wireless client. If not, contact Bandspeed for technical assistance.

When prompted for user name and password, enter “admin” as the user name and the current password. You will see the AirMaestro 3100AG configuration home page (below).

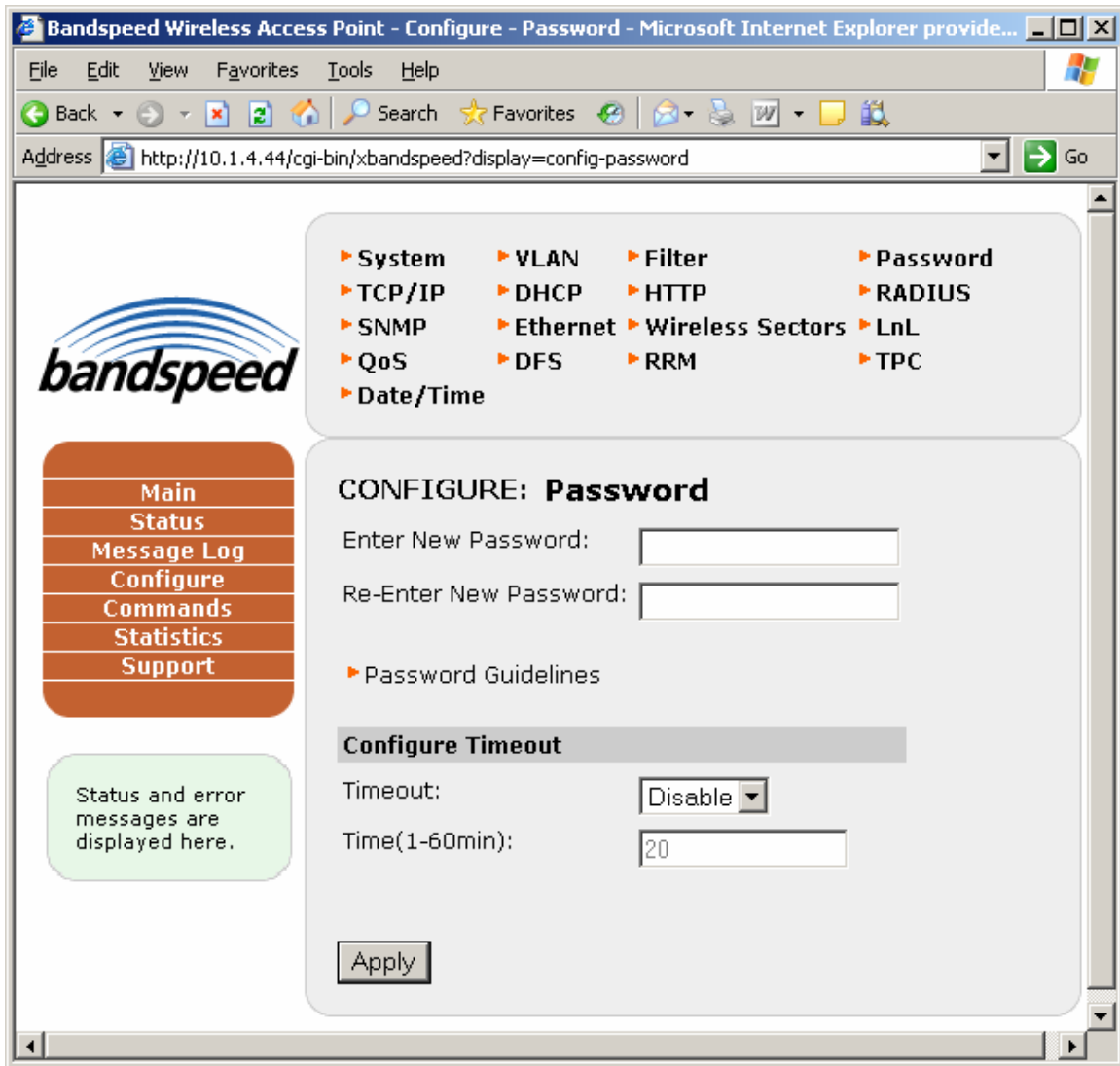
PRELIMINARY



Select Configure at the main menu and the configuration page will appear (below).



Select Password from the configuration menu bullet list and you will see the password configuration screen (below).

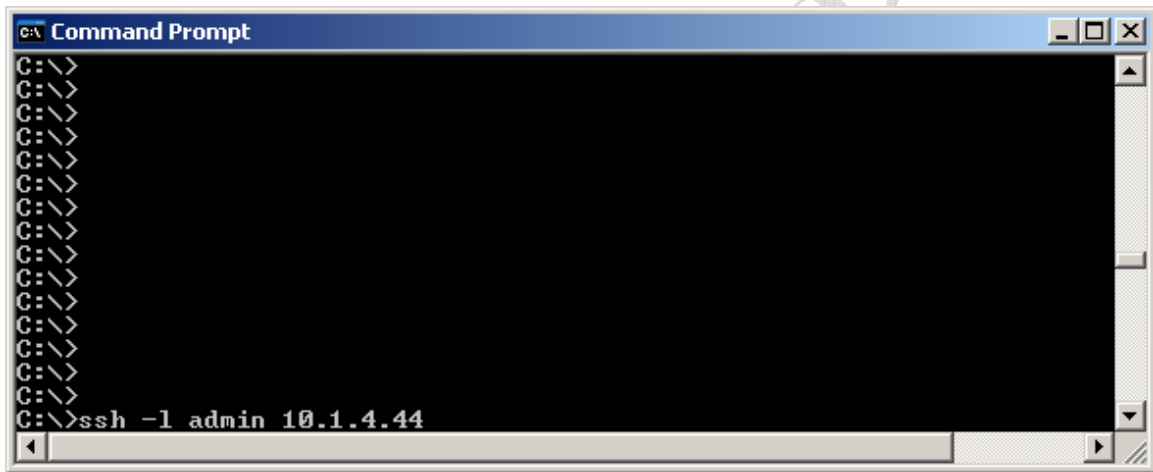


Enter the new password in the fields provided, consulting the Password Guidelines if needed. Press [Apply] to commit the password change.

Changing the Password Using the Command Line Interface

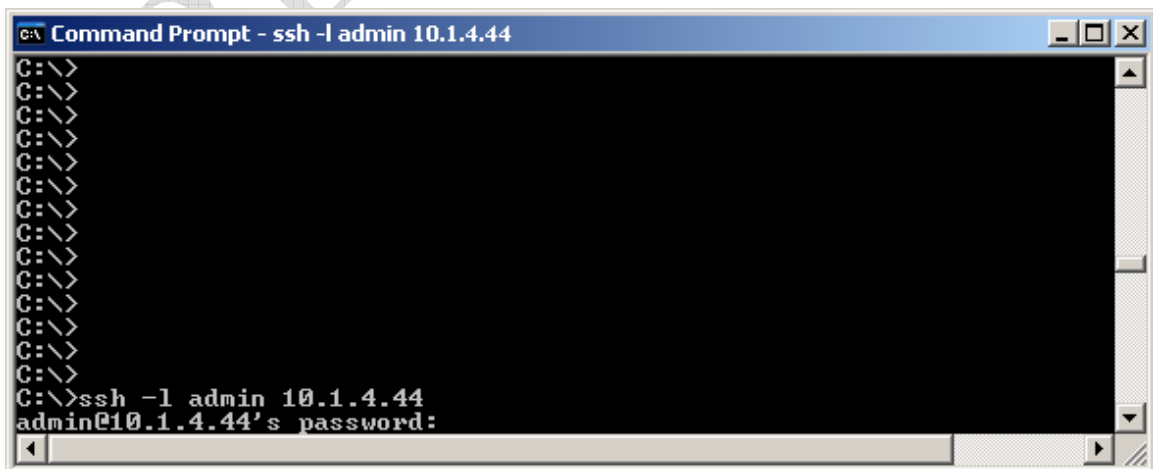
You can access the AirMaestro 3100AG command line by ssh (recommended) or telnet login to the AirMaestro 3100AG's base IP address. *Note that using telnet to set passwords is not secure, in that the password is exposed in clear-text on your network. If you must use telnet, Bandspeed recommends using it on an isolated network only, where network traffic can not be viewed by unauthorized parties.* An example is shown for ssh but the telnet process is similar. Note that ssh support for Windows is part of the open source Cygwin package.

For a Windows/XP client, open a Command Prompt window from Programs/Accessories and type “ssh -l admin {IP address}”. See the example window below.



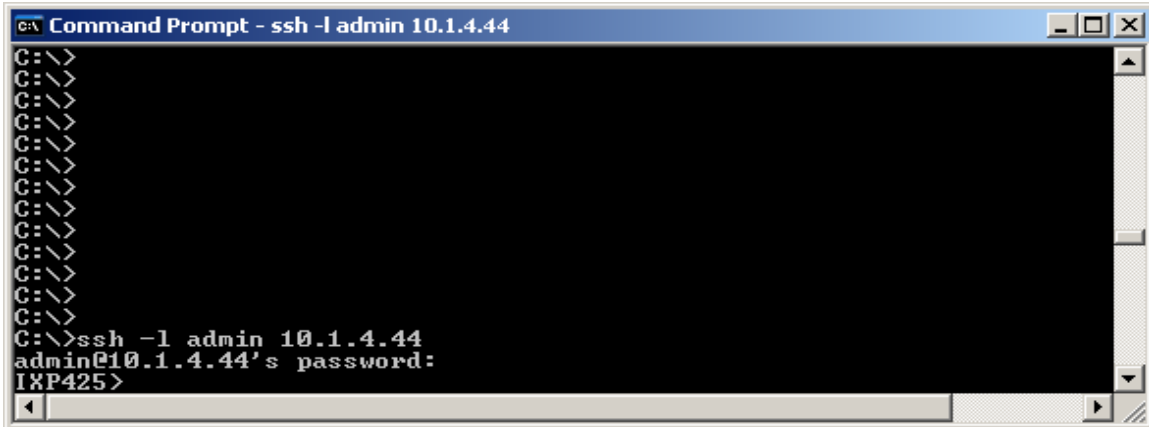
```
C:\>ssh -l admin 10.1.4.44
```

Press <Enter> and you'll be presented with a password prompt as shown below.



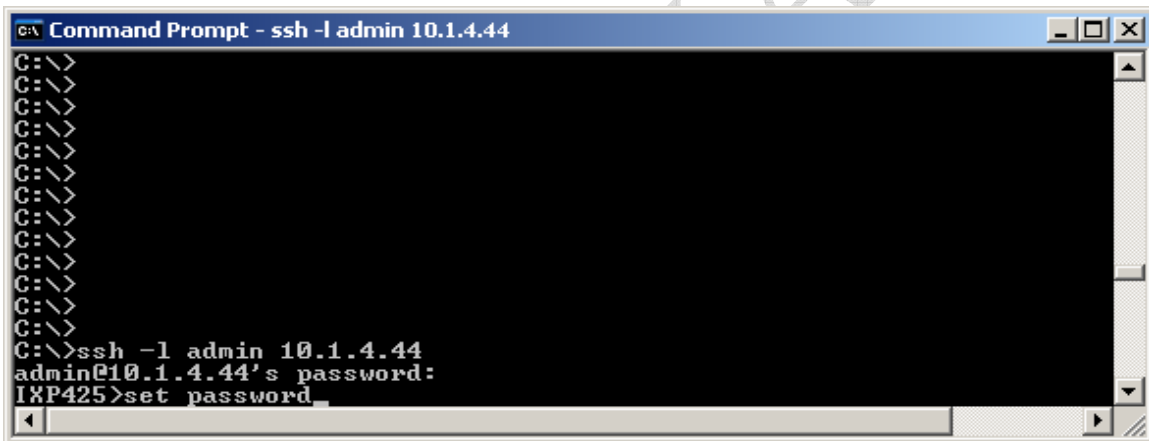
```
C:\>ssh -l admin 10.1.4.44
admin@10.1.4.44's password:
```

Enter the AirMaestro 3100AG factory default password and the IXP425 prompt appears.



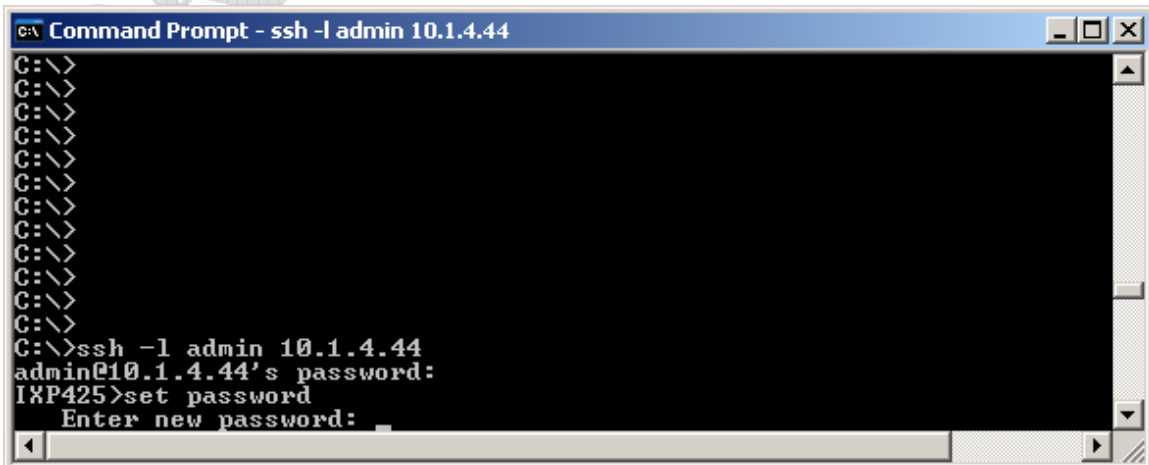
```
C:\>ssh -l admin 10.1.4.44
admin@10.1.4.44's password:
IXP425>
```

Set a new “admin” password using the Bandspeed “set password” command as shown.



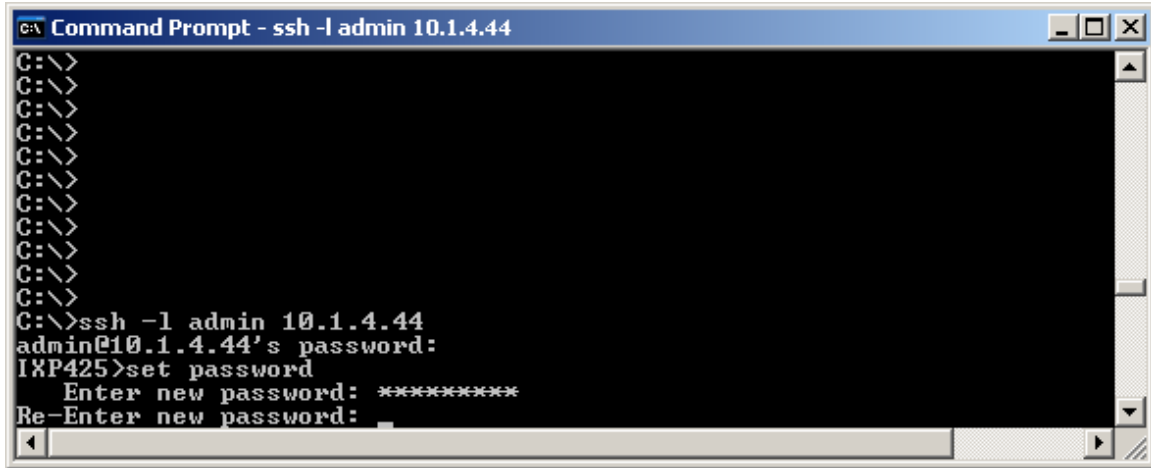
```
C:\>ssh -l admin 10.1.4.44
admin@10.1.4.44's password:
IXP425>set password
```

Press <Enter> and you’ll be prompted for the new password as shown.



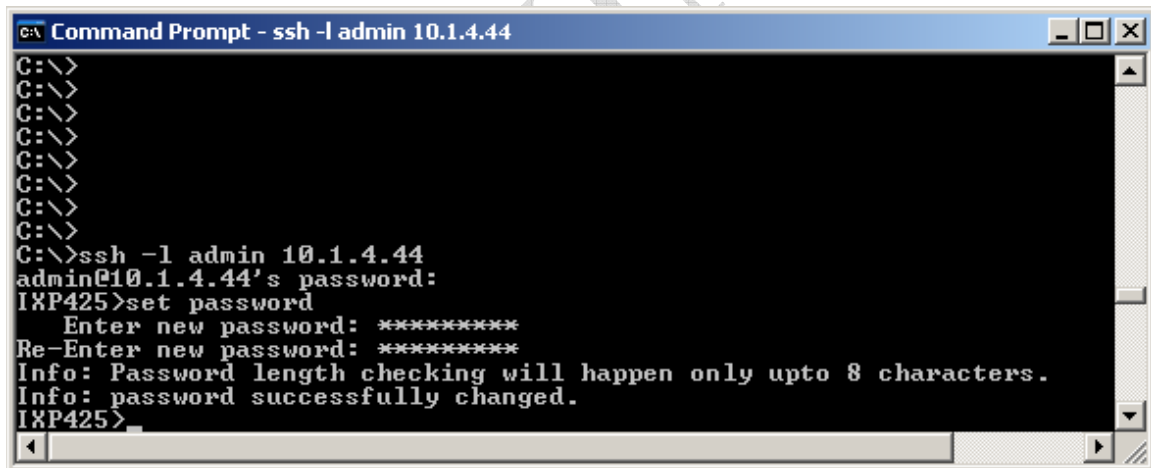
```
C:\>ssh -l admin 10.1.4.44
admin@10.1.4.44's password:
IXP425>set password
Enter new password:
```


Enter the same password a second time when prompted as shown.



```
C:\>
C:\>
C:\>
C:\>
C:\>
C:\>
C:\>
C:\>
C:\>
C:\>
C:\>
C:\>ssh -l admin 10.1.4.44
admin@10.1.4.44's password:
IXP425>set password
Enter new password: *****
Re-Enter new password: _
```

If you've successfully entered the same password twice, you'll see the following screen acknowledging the password change.



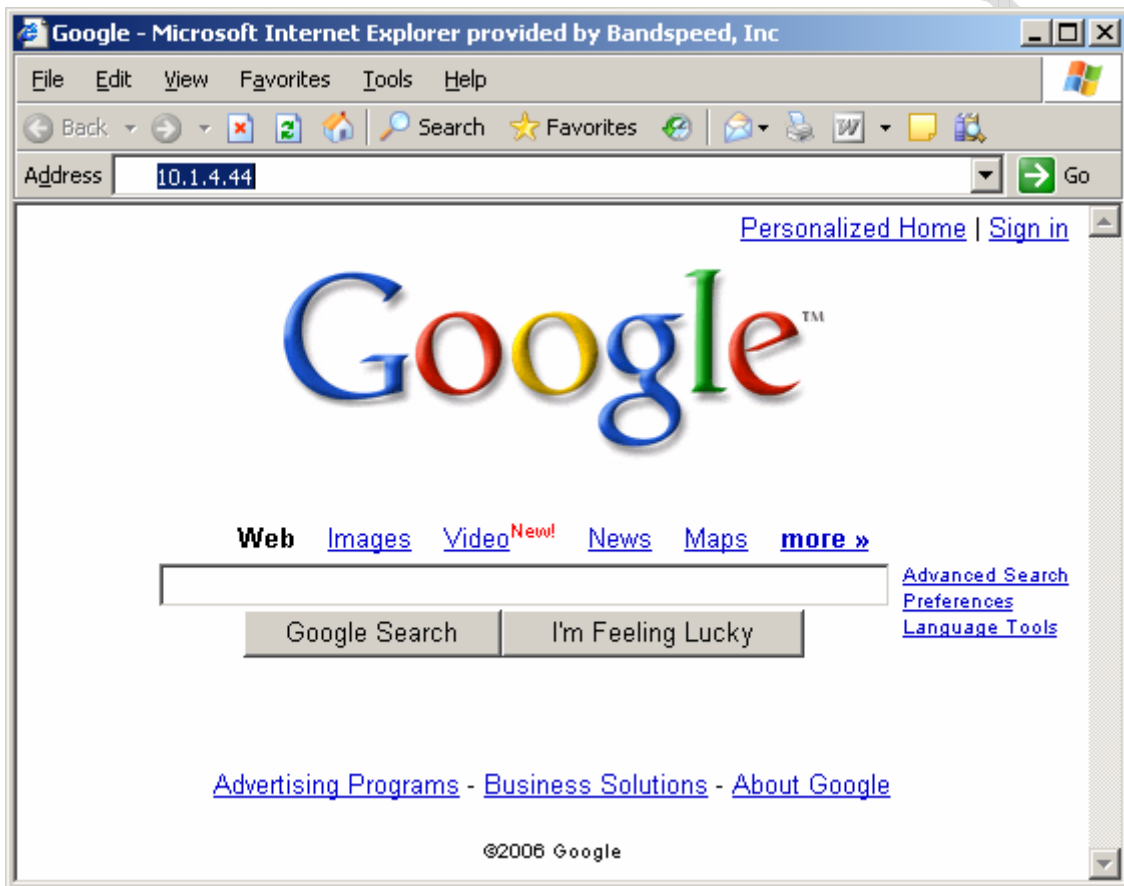
```
C:\>
C:\>
C:\>
C:\>
C:\>
C:\>
C:\>
C:\>
C:\>ssh -l admin 10.1.4.44
admin@10.1.4.44's password:
IXP425>set password
Enter new password: *****
Re-Enter new password: *****
Info: Password length checking will happen only upto 8 characters.
Info: password successfully changed.
IXP425>
```

The process for using UNIX or Linux as a client is similar to the process above.

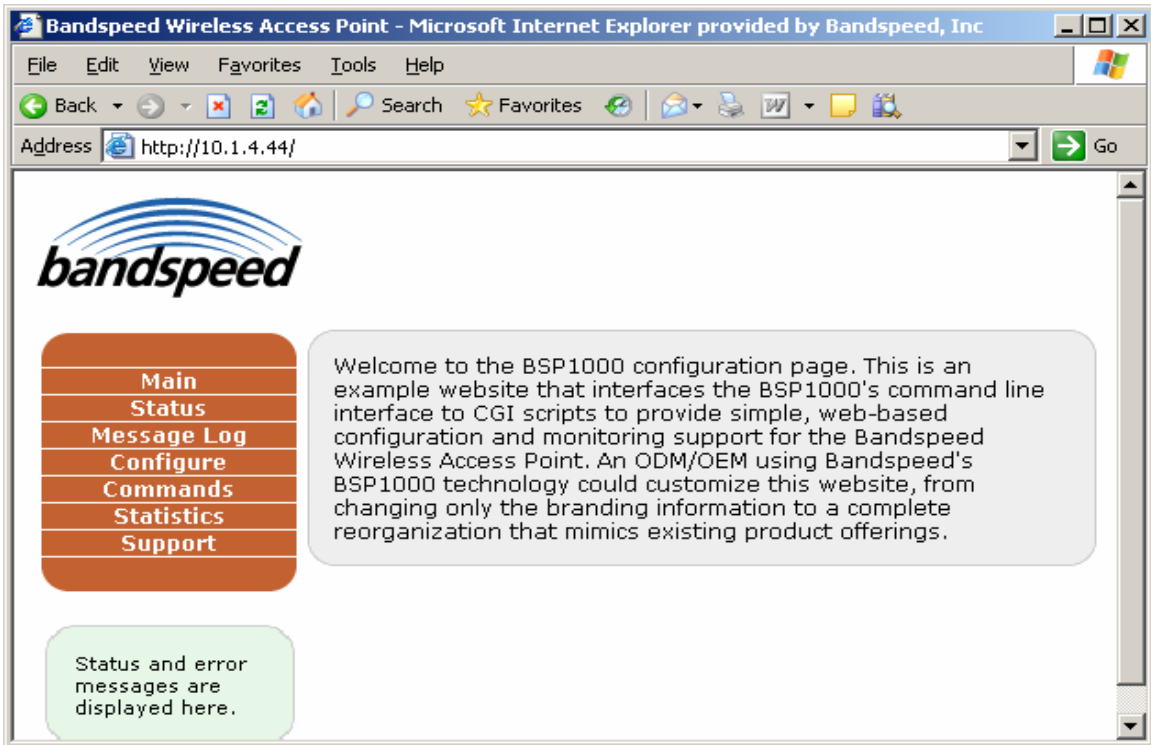
Configuring SSIDs

You will likely want to use site-specific SSIDs on your wireless LAN, as opposed to the AirMaestro 3100AG factory default or the “QuickStart” SSID used in preceding examples. You can configure site-specific SSIDs through the AirMaestro 3100AG configuration web page, as follows.

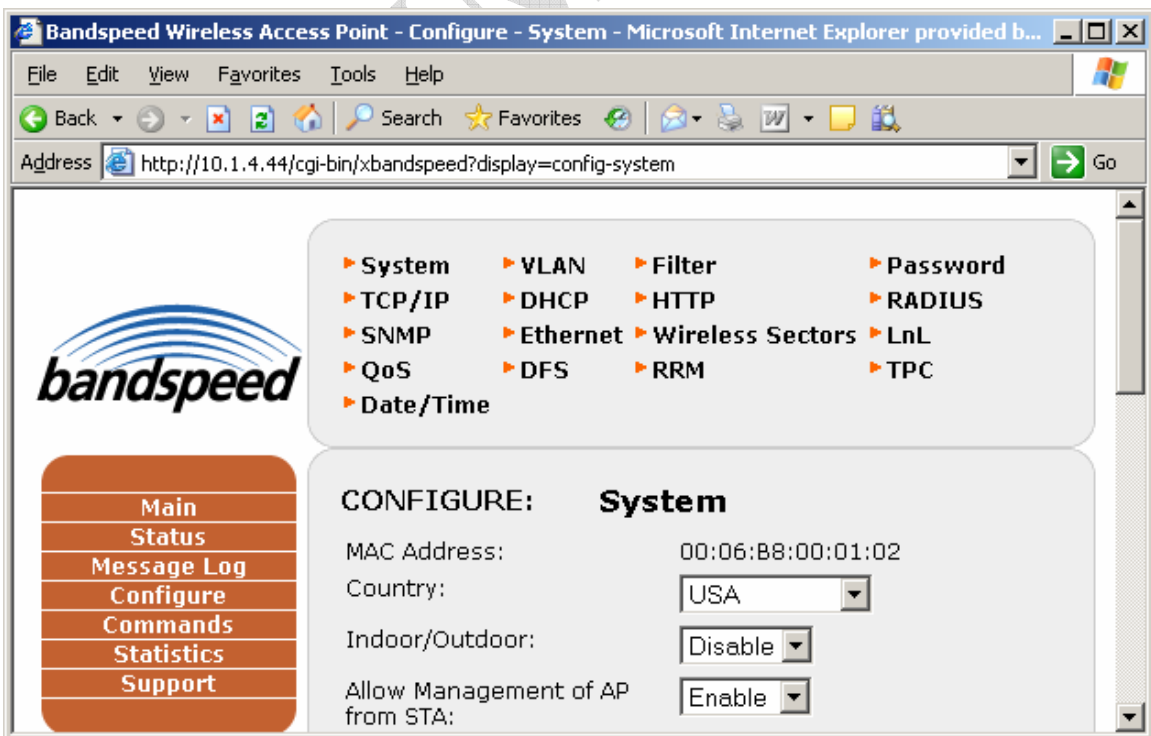
Launch your personal computer’s web browser, enter the AirMaestro 3100AG’s IP address in the "Address" field and press <Enter>.



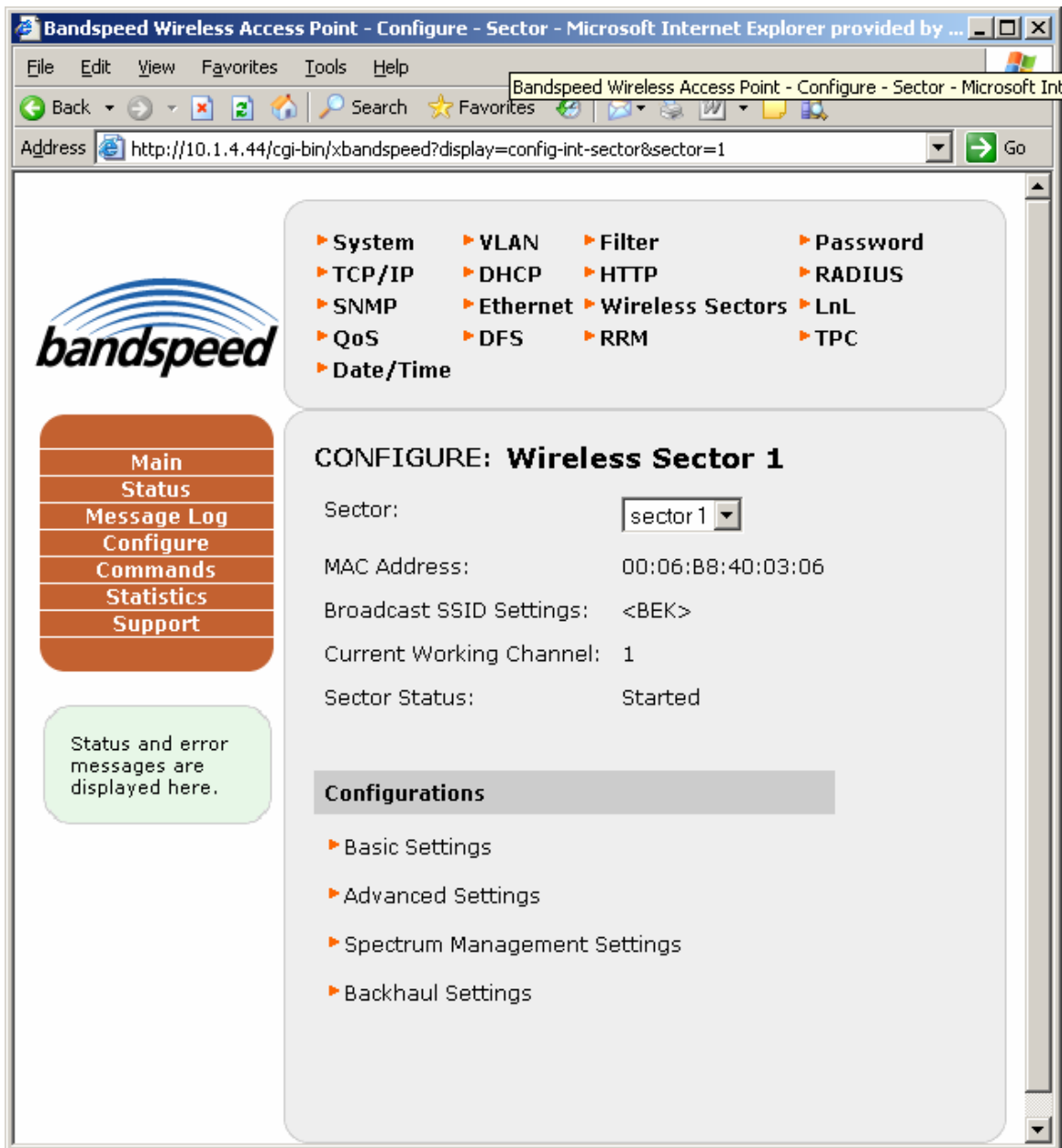
When prompted for user name and password, enter “admin” as the user name and the current password. You will see the AirMaestro 3100AG configuration home page (below).



Select Configure at the main menu and the configuration page will appear (below).



Select Wireless Sectors from the configuration bullet-list and the Wireless Sectors configuration page will appear (below).



The current broadcast SSID for wireless sector 1 is displayed under Broadcast SSID Settings. You can configure the same SSID on each of sectors (interfaces) 1, 2 and 3 or different SSIDs on each of them.

To change the SSID for wireless sector 1, select Basic Settings under Configurations and the Wireless Sectors Basic Settings page will appear (below).

bandspeed

- ▶ System
- ▶ TCP/IP
- ▶ SNMP
- ▶ QoS
- ▶ Date/Time
- ▶ VLAN
- ▶ DHCP
- ▶ Ethernet
- ▶ DFS
- ▶ Filter
- ▶ HTTP
- ▶ Wireless Sectors
- ▶ RRM
- ▶ Password
- ▶ RADIUS
- ▶ LnL
- ▶ TPC

CONFIGURE: Wireless Sector 1

- ▶ Basic Settings
- ▶ Advanced Settings
- ▶ Spectrum Management Settings
- ▶ Backhaul Settings

Wireless Sector

Sector:

Basic Settings

MAC Address:

Broadcast SSID Settings:
eg: <ssid> , <string>

Mode:

Current Working Channel:

Spectrum Management (11h support):

Require Stations to support 11h:

Radio Measurement:

SelfCts:

Apply On sectors

1 2 3

To change the SSID, edit the text between <> in the Broadcast SSID Settings text box and press [Apply]. This example sets the SSID for sector 1 to “QuickStart1”.

To configure an SSID on a different wireless sector (interface), open the Sector pull-down under Wireless Sector and select the sector you want to configure. Repeat the process above for this wireless sector.

bandspeed

- ▶ System
- ▶ TCP/IP
- ▶ SNMP
- ▶ QoS
- ▶ Date/Time
- ▶ VLAN
- ▶ DHCP
- ▶ Ethernet
- ▶ DFS
- ▶ Filter
- ▶ HTTP
- ▶ Wireless Sectors
- ▶ RRM
- ▶ Password
- ▶ RADIUS
- ▶ LnL
- ▶ TPC

CONFIGURE: Wireless Sector 2

- ▶ Basic Settings
- ▶ Spectrum Management Settings
- ▶ Advanced Settings
- ▶ Backhaul Settings

Wireless Sector

Sector:

Basic Settings

MAC Address:

Broadcast SSID Settings:
eg: <ssid> , <string>

Mode:

Current Working Channel:

Spectrum Management (11h support):

Require Stations to support 11h:

Radio Measurement:

SelfCts:

Apply On sectors

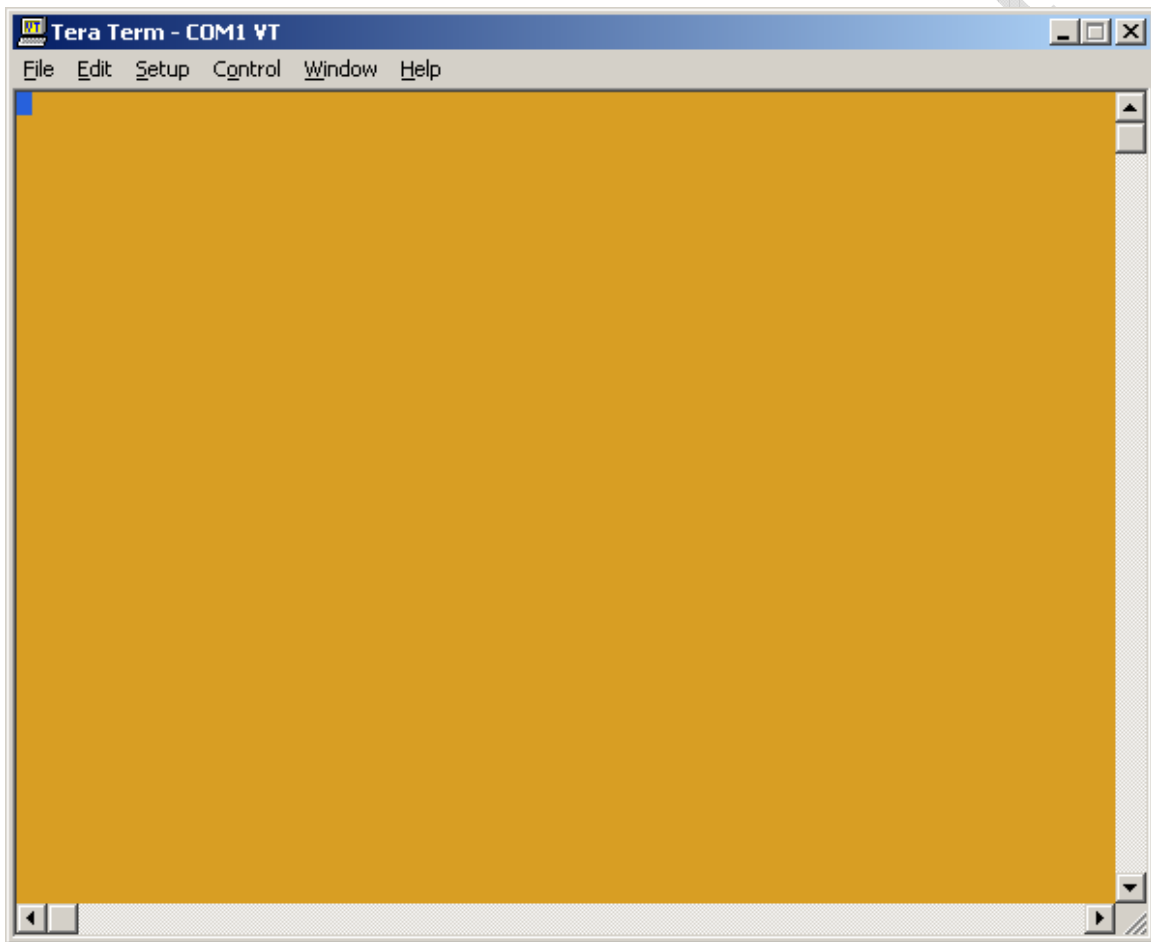
1 2 3

Configuring AirMaestro 3100AG Using the Serial Port

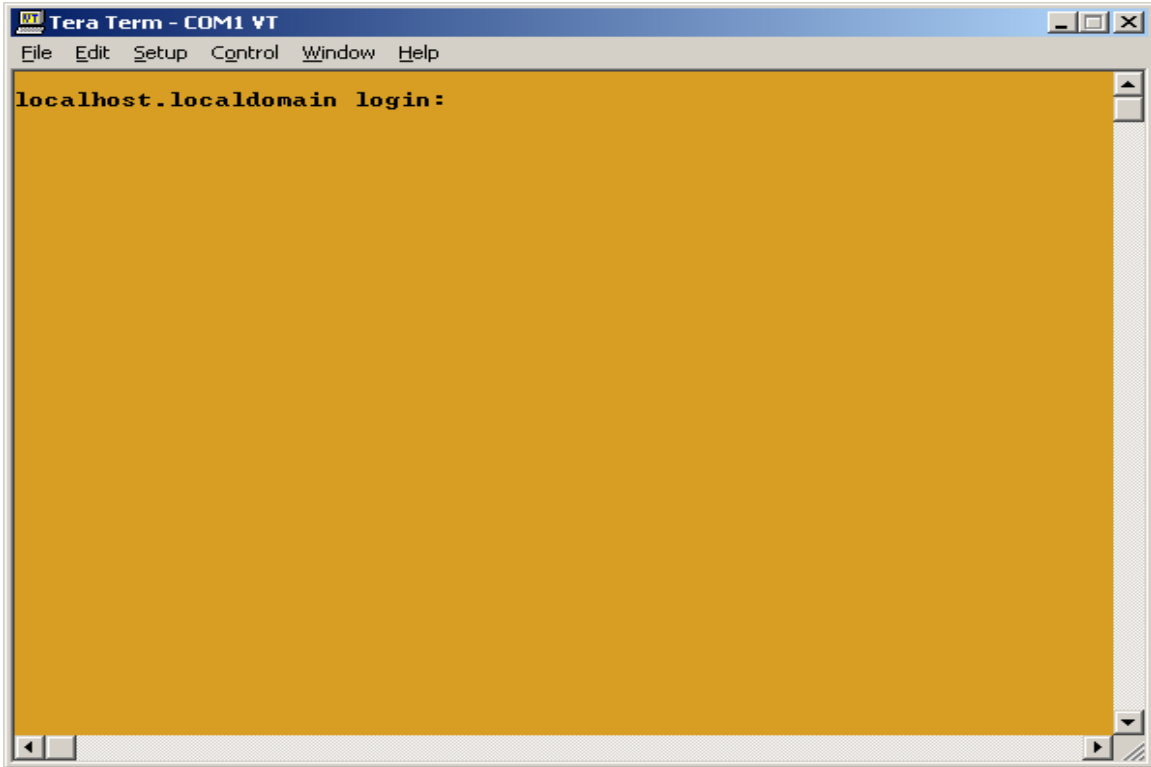
Should the AirMaestro 3100AG become inaccessible over the network (ethernet or wireless), you may need to configure it using the serial interface.

Connect a null-modem cable from an industry-standard PC to the serial port on the back of the AirMaestro 3100AG.

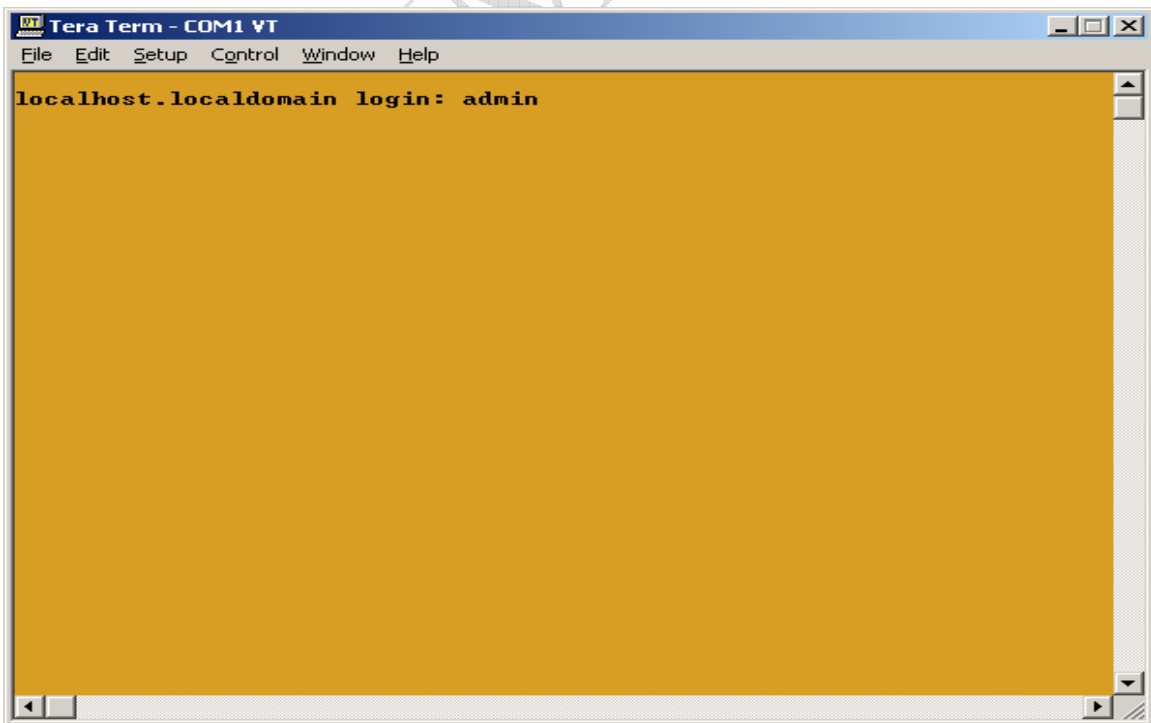
Configure the serial interface according to the Serial Port information in **Important Factory Defaults**. Use a serial interface program such as TeraTerm to configure the serial interface, usually COM1.



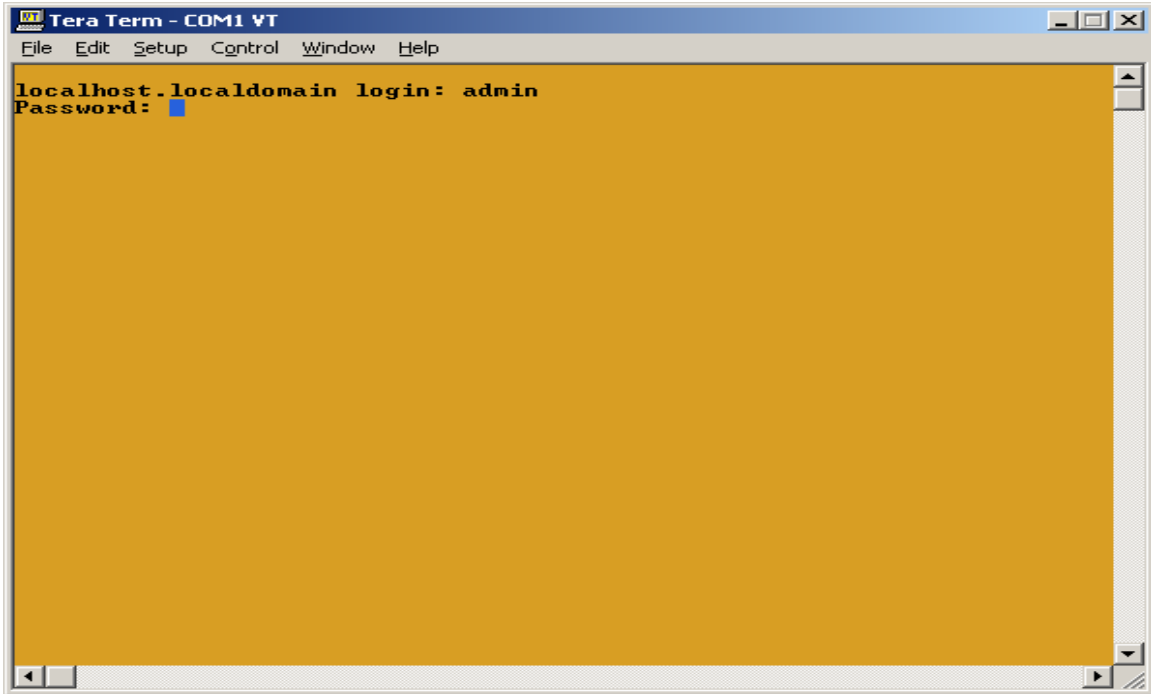
After configuring the serial interface, press <Enter> on the PC keyboard and you will be presented with the AirMaestro 3100AG login prompt (below).



Enter admin as the user name as shown and press <Enter>.



Enter the admin password when prompted.



You are now logged in to the AirMaestro 3100AG, just as with the ssh/telnet examples given earlier. All Bandspeed CLI functionality is available. See the AirMaestro 3100AG User Guide for more information on functionality available from the CLI.

