

【Operational description/User Manual】

[DRAFT] / Subject to
change

The Remote Parking Pilot[®] assistant allows you to leave your car at the entrance of an outside or underground car parking and let your car find a space and park by itself, by activating the Remote Parking Pilot[®] application from your Smart Phone.

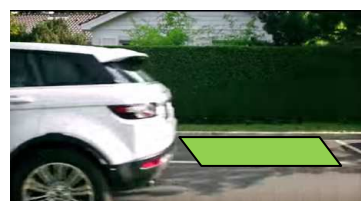
Once the Remote Parking Pilot[®] assistant is enabled your vehicle becomes autonomous and start to search for a parking space.

Once a parking slot is detected, the system takes in charge the maneuvers in order to fit in, without any further intervention from you. Once the operation is complete, you receive a notification on your Smart Phone.

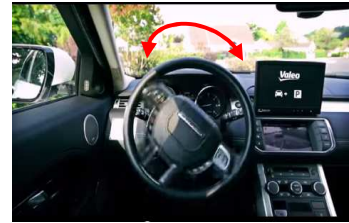
The Remote Parking Pilot[®] assistant works in both ways. When you want to get back your car out of the parking, you only need to notify your request through your Smart Phone and your car rolls back automatically to you.

[Instruction]:

1. Stop the car at the location you need to head to
2. Exit your car and close all doors
3. Select the Remote Parking Pilot[®] application in your smart Phone
4. At this stage your vehicle takes over and looks for a parking slot
5. Detection of a free slot



6. Your vehicle manoeuvres by itself



7. End



Regulatory information:

US, Canada:

FCC ID: **VE2-12PM15**

IC: **7173A-12PM15**

PMN: 12PM15

This device complies with Part 15 of the FCC rules and contains licence-exempt transmitter(s)/receiver(s) that comply with Innovation, Science and Economic Development Canada's licence-exempt RSS(s). Operation is subject to the following two conditions:

- (1) this device may not cause interference and,*
- (2) this device must accept any interference, including interference that may cause undesired operation of the device.*

Changes or modifications made to this equipment not expressly approved by (manufacturer name) may void the FCC authorization to operate this equipment.

This radio transmitter 7173A-12PM15 has been approved by Innovation, Science and Economic Development of Canada to operate with the antenna types listed below with the maximum permissible gain indicated. Antenna types are not included in this list, having a gain greater than the maximum gain indicated for that type, are strictly prohibited for use with this device.

Description	Average Gain [dBi]	Manufacturer
Evaluation (dipole) Antenna (W1010)	2.0	PULSE
Spoiler Antenna (S213)	1.0	KATHREIN Werke KG
Roof Antenna (222-ECE)	- 6.0	KATHREIN Werke KG
Black Print Antenna (C238, W213)	- 1.0	KATHREIN Werke KG

Radiofrequency radiation exposure Information:

This equipment complies with FCC and IC radiation exposure limits set forth for an uncontrolled environment. This equipment should be installed and operated with minimum distance of 0.5 cm between the radiator and your body.

This transmitter must not be co-located or operating in conjunction with any other antenna or transmitter.