

KB33S

Bluetooth®
Stereo Headphone



User' s Guide

Contents

Introduction	2
Overview	4
Wearing the Headset	5
Charging the Headset	5
Push button disposition	8
Turning the Headset On and Off	8
Pairing the Headset	9
Using the Headset	10
Music function operation	10
Call function operation	12
Resetting the Headset	15
Headset LED Indicator	15
Charging Indicator	17
Audio Tones	18
Safety Approvals	18
Authentication	19
Specifications	20
Limited Warranty	21

Introduction

Thank you for choosing KB33S Bluetooth Stereo Headphone as your personal wireless accessory. The KB33S is the folding Bluetooth wireless music and hands-free headphone. The KB33S is integrated very good audio quality to driven speakers. Simply connect KB33S to main power then to make the wireless connecting over Bluetooth using the supplied Mobile phones/USB Dongle/Stereo Audio Gateway --- the maximum range can be up to 30 feet (10 meters).

Read this user's guide carefully before using the KB33S Bluetooth Stereo Headphone. More detailed information is in the user's guide of the Bluetooth devices you want to use it with the Stereo Headphone.

What is Bluetooth® Wireless Technology

Bluetooth® wireless technology is set to revolutionize the personal connectivity market by providing freedom from wired connections – enabling links and providing connectivity between mobile computers, mobile phones, portable handheld devices and much more. Bluetooth® wireless technology redefines the very way we experience connectivity.

Phone compatibility

The KB33S Bluetooth Stereo Headphone can work with the Bluetooth® mobile phones that are compatible with

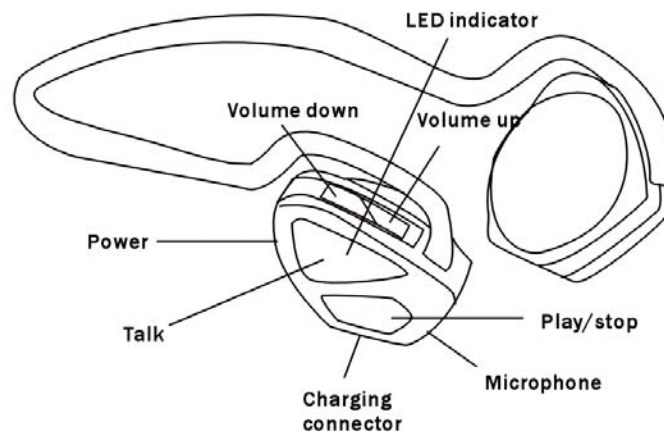
Bluetooth® v1.1 , V1.2 , V2.0+EDR versions and supports Headset or Hands-free profile. Before using the Bluetooth Stereo Headphone, first make sure your mobile phone has Bluetooth® capability.

What is included in the standard package

- One KB33S Bluetooth® Stereo Headphone
- One mini USB cable
- One User's guide

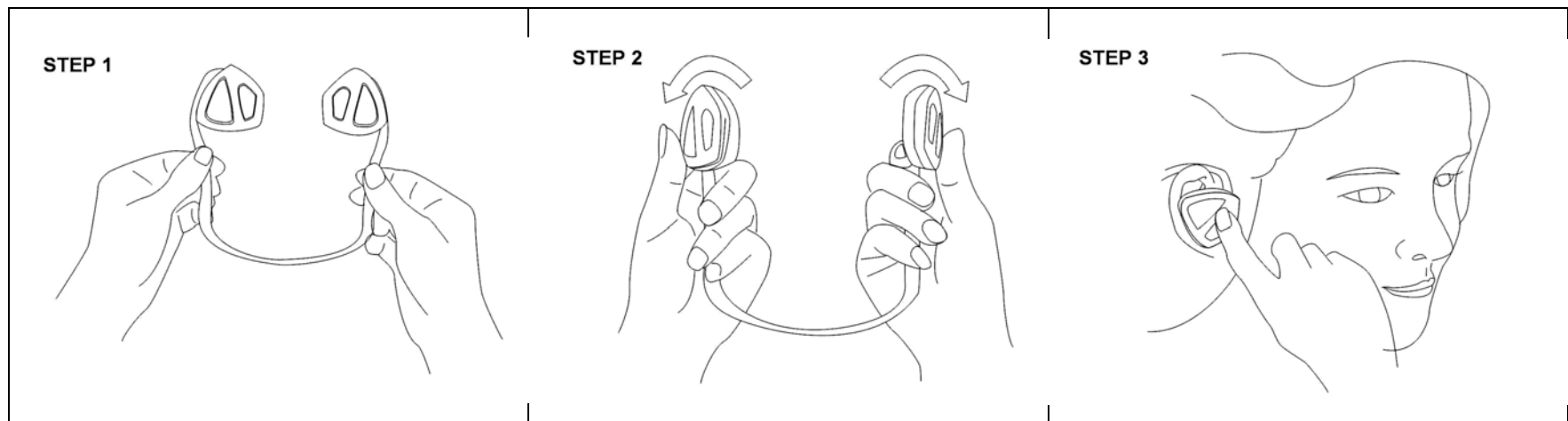
Overview

- | | | |
|----|------------------------|--|
| 1. | Talk button | Controls headphone Hands-free functions |
| 2. | Play/Stop | Controls headphone music functions |
| 3. | Power button | Controls headphone functions |
| 4. | Volume down button | Decreases the speaker volume during a call |
| 5. | Volume up button | Increases the speaker volume during a call |
| 6. | Headset LEDs indicator | Displays visual headphone status |
| 7. | Charging Connector | Charges the headphone |
| 8. | Microphone | Picks up your voice input |



Wearing the Headset

The KB33S Headset can be worn on either ear.



NOTE: Before attaching or detaching the ear-hook, first remove the ear cushion in case the ear cushion is broken.

Charging the Headset

First time charge: Before using the headset for the first time, charge the Bluetooth Stereo Headphone for approximate 2 hours to achieve full battery capacity and maximum power.

Recharging: When the headset beeps and the headset LED indicator flashes red, you have to recharge the headset. The low battery warning indication begins five minutes of talk time before the headset runs out of power.

To keep the battery in good condition, please always recharge the headset within one to two weeks when the headset is fully discharged. Before charging, make sure that the headset is at room temperature. Temperature extremes can affect the battery performance and charging.

NOTE: The headset battery is not replaceable.

How to charge the headset:

1. Connect the AC Adapter cable to the charging Connector.
2. Plug the AC Adapter into an electrical outlet.
3. During charging, the red indicator light on the headset is shown.
4. When the headset is fully charged, the red indicator light on the headset turns off.
5. Remove the headset from the charging connector from the AC Adapter.

Push button disposition

We set five buttons as follow:

[POWER] [PLAY] [TALK] [VOL+] [VOL-]

And have three kinds of ways to operate it.

- press the button once
- press the button for 2 seconds
- press the button for 5 seconds

Turning the Headset On and Off

To turn on:

Press the power button until the headset LED indicator together bright & hear the prompt sound .
If haven't been pairing it before .If haven't been paired ,it will automatic execution pair when it turnson.

To turn off:

Press the power button until the headset LED indicator are bright together & hear the prompt sound.
Then the light all extinguishes.

Pair the Headset and Bluetooth devices

Pairing the headset:

Pin Code: 0000

Press the power button until the headset LED indicator alternates between blue and red, and hear a Prompt sound.

Cancel the pair:

Have no this function. Just can wait timeout or turn Close-down.

Using the Headset

Before using the headset, ensure that:

- (1) The headset is turned on and connected to the devices.
- (2) The headset is within 10 meters of the devices.
- (3) The Bluetooth® figure is activated in the devices.

NOTE: The headset supports both Headset and Hands-free profiles. Some devices don't support all functions listed. Please consult your device's user's guide.

Music function operation

Connctet:

Once connected or paired just now, you will hear prompt sound when you press the PLAY button.

Play:

In non-playing condition, press the Play button.

Pause:

Press the play button in playing condition you will hear a prompt sound.

Stop:

Press the play button in playing condition until hear a prompt sound.

Up above:

Press the vol+ button in playing condition until hear a prompt sound.

Domn below:

Press the vol- button for about 2 seconds in playing condition until hear a prompt sound.

Volume up:

Press the vol+ button in non playing condition until hear a prompt sound.

Volume domn:

Press the vol- button in non broadcast condition until hear a prompt sound.

Call function operation

Connect:

Once connected or paired just now, you will hear prompt sound when you press the talk button.

Break off the call:

Under connected condition and non-telephone conversation condition , press the TALK button until hearing a prompt sound.

Pronunciation dials:

Under connected condition and non-telephone conversation condition, press the TALK button.

Accepting a call:

On the condition of calling, press the TALK button.

Rejecting a call:

On the condition of calling, press the TALK button until hearing a prompt sound.

Ending the call:

under the condition of calling, press the TALK button will hear a prompt sound.

Transfer the call:

Under the condition of calling, press the TALK button until hearing a prompt sound.

Returns dials:

Under the condition of non calling, press the VOL+ button until hearing a prompt sound.

Dials again the last number:

Under the condition of non calling, press the VOL- button until hearing a prompt sound.

Switch the mobile phone: ※ The system can only remember recently connected two handsets.
Press the POWER+TALK at the same time; it will connect the second phone.

Volume up:

Press the vol+ button in playing condition.
Until hearing a prompt sound

Volume down:

Press the vol- button in playing condition.

Volume up the sidetone:

In telephone conversation, press the [talk] + [vol+] button at the same time.

Volume down the sidetone:

In telephone conversation press the [talk] + [vol-] button at the same time.

Resetting the Headset

If the headset cannot function normally, you can try to reset it. To reset the headset, press the [power] + [play] + [talk] + [vol-] button at the same time, and then turn on the headset.

Headset LED Indicator

Pairing Indicator:

Red and blue lights Alternant flashes.

Connect:

After red and blue together bright, alternately flashes.

Playing music or in line: Interval 4 seconds then flashes once , (the bottom voltage changes the

red candle)

HFP/HSP Indicator:

The blue lamp each about 3 seconds flashes 2 quickly. (the bottom voltage changes the red candle)

AADP Indicator:

The blue lamp each about 3 seconds flashes 3 quickly. (the bottom voltage changes the red candle)

HFP/HSP and AADP Indicator:

The blue lamp each about 3 seconds flashes quickly. (the bottom voltage changes the red candle)

Idle Indicator:

The blue lamp each about 3 seconds flashes 1. (the bottom voltage changes the red candle)

LED Indicator

Headset Status	LED Indicator	Mode
Turning on	Blue	Interval 4 seconds then flashes once
Turning off	Red	Flash once then off
Pairing mode	Blue and red	Alternant flashes until the pairing is complete or time out after 60 seconds.
Standby mode	Blue	Interval 5 seconds then flashes twice
Caller mode	Blue and red	Both flashes at the same time
Talk mode	Blue	Interval 4 seconds then flashes thrice

Charging Stand Indicator

Charging Status	LED Indicator
Charging in progress	Red on
Charging complete	Red off

Audio Tones

Headset Status	Audio tones
Turning on the headset	Quick series of 2 tones, low to high
Turning off the headset	Quick series of 2 tones, high to low
Pairing	No audio indication
Incoming call	Ring tone
Turning off the microphone	Two tones repeated every 2 seconds
Turning on the microphone	Single tone
Low battery	Rapid tones every 30 seconds in standby mode

Safety Approvals

Users are advised not to make changes or modify the device in any way. Changes or modifications not expressly approved by KMC-WT will void the warranty.

FCC

This device complies with part 15 of the FCC rules. Operation is subject to the following two conditions:

- (1) This device may not cause harmful interference, and
- (2) This device must accept any interference received, including interference that may cause undesired operation.

FCC RF Exposure requirements:

This device and its antenna(s) must not be co-located or operation in conjunction with any other antenna or transmitter.

This product has been evaluated under FCC Bulletin OET 65C and found compliant to the requirement as set forth in CFR 47 section 2.1091, 2.1093 and 15.247(b)(4) addressing RF Exposure from radio frequency device. The radiated output power of this product is far below the FCC radio frequency exposure limits.

Changes or modification not expressly approved by the party responsible for compliance could void the user's authority to operate the equipment.

NOTE: THE MANUFACTURER IS NOT RESPONSIBLE FOR ANY RADIO OR TV INTERFERENCE CAUSED BY UNAUTHORIZED MODIFICATIONS TO THIS EQUIPMENT. SUCH MODIFICATIONS COULD VOID THE USER'S AUTHORITY TO OPERATE THE EQUIPMENT.

CE Statement

Important Notice: This device is a 2.4GHz FHSS Bluetooth® headset, intended for office and home uses in all EU and EFTA member states.

Limited Warranty

KMC-WT provides this limited warranty for the KB33S Headset (hereinafter referred to as "Product").

KMC-WT warrants this Product to be free from defects in materials and workmanship at the time of its original purchase and for a subsequent period of three (3) months. If a defect is discovered, KMC-WT will, at its option, repair or replace the Product at no charge provided it is returned during the warranty period. KMC-WT reserves the right to charge a handling fee if a returned Product is found not to be under warranty. Proof of purchases is required.

This warranty does not cover any failure of the Product due to normal wear and tear, or due to accident, abuse, misuse, including but not limited to use in other than the normal and customer manner, in

accordance with the KMC-WT instructions for use of the Product; or caused by modification, repair or opening of the Product by a non-KMC-WT authorized person. Removing or defacing any KMC-WT serial number on the Product will void the warranty.

The warranty and remedies set forth above are exclusive and in lieu of all others, whether oral or written, expressed or implied. KMC-WT specifically disclaims any and all other warranties, including implied warranties of merchantability, fitness for a particular purpose, and non-infringement of third party rights are expressly excluded. KMC-WT is not responsible for special, incidental or consequential damages resulting from any breach of warranty or under any other legal theory, including, without limitation, damages resulting from use of or reliance on this information presented, loss of profits or revenues or costs of replacement goods, even if informed in advance of the possibility of such damages.

The Bluetooth® word mark and logos are owned by Bluetooth® SIG, Inc. and any use of such marks is under license. Other trademarks and trade names are those of their respective owners.