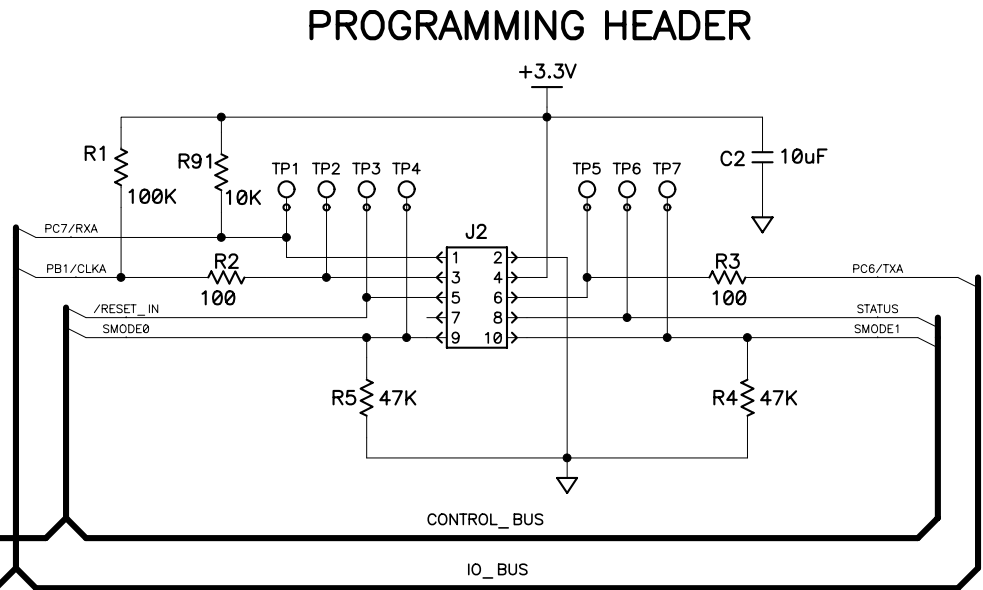
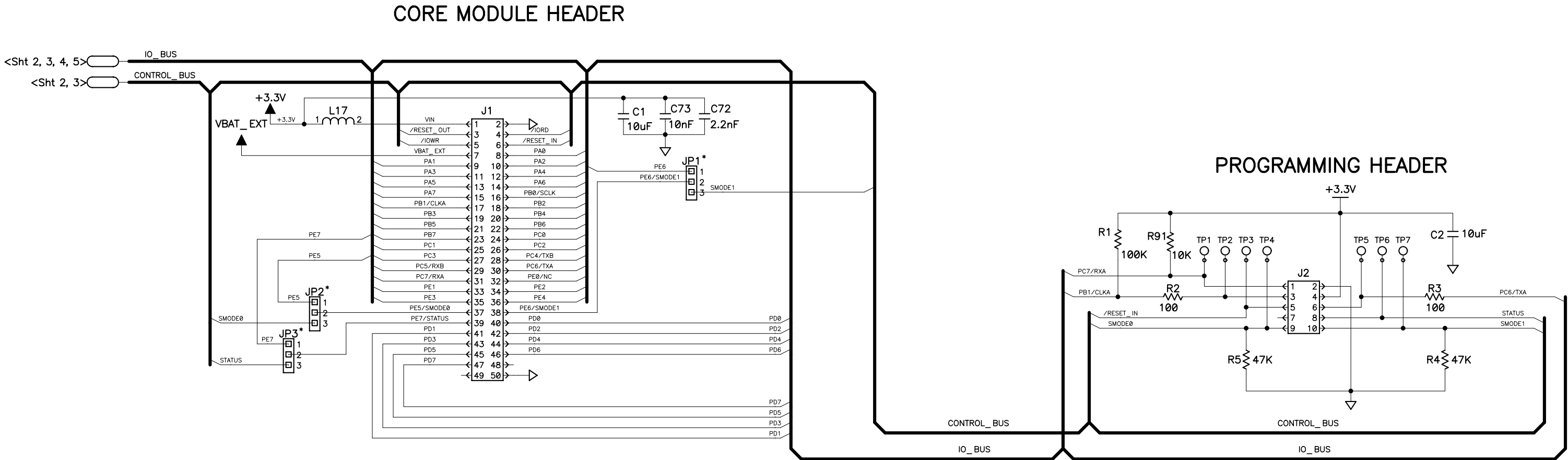


REVISION HISTORY			REVISION APPROVAL			
REV	ECO	DESCRIPTION	PROJECT ENGINEER	APPROVAL DATE	DOCUMENT CONTROL	APPROVAL DATE
A	000252	RELEASE	NL	6/3/08		

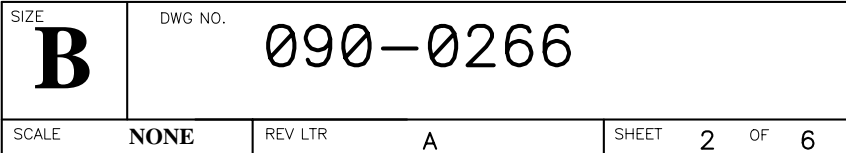


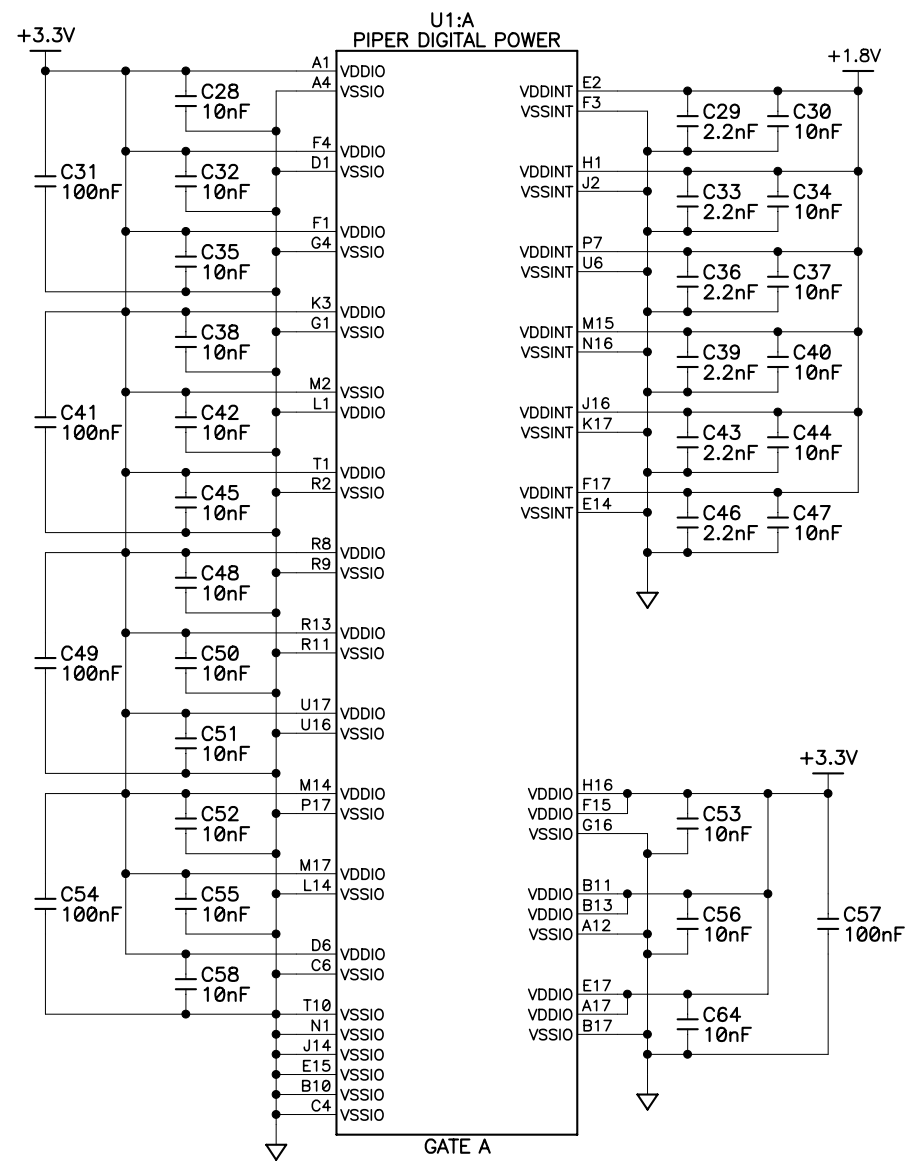
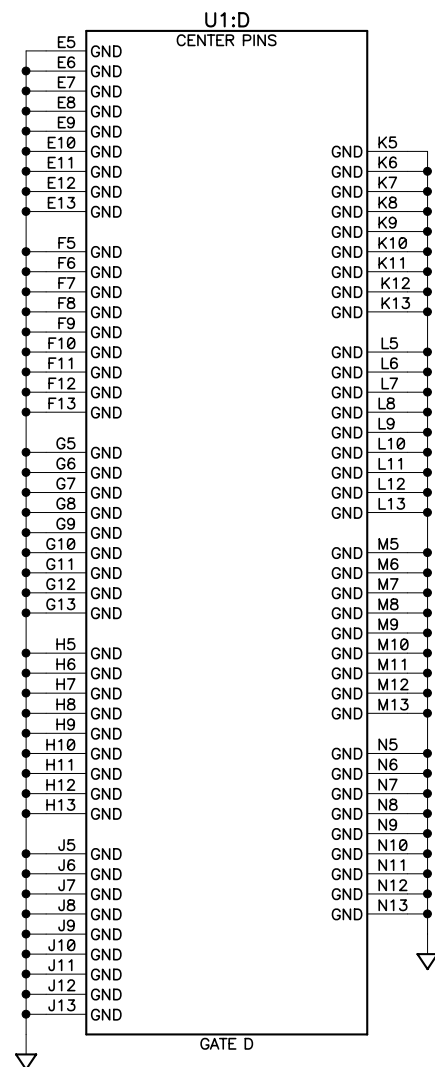
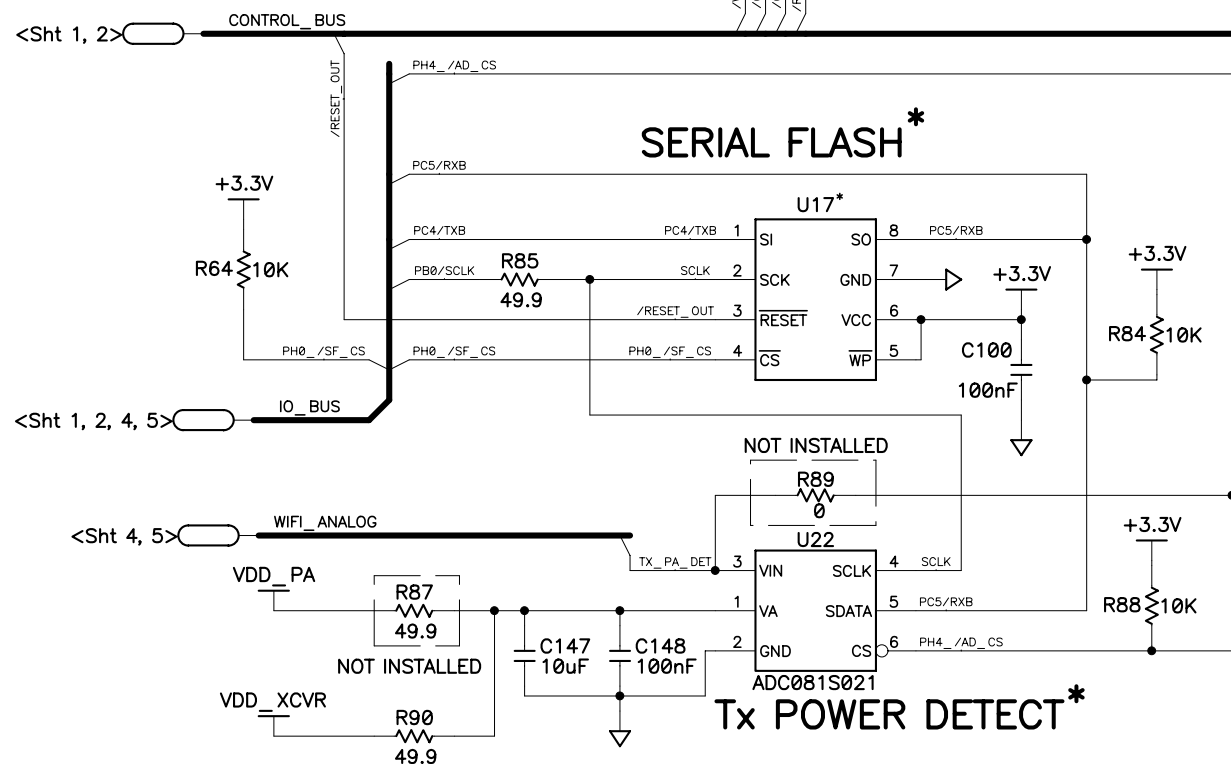
- NOTES: UNLESS OTHERWISE SPECIFIED;
- ALL RESISTOR VALUES ARE IN OHMS, 1/16W, 1% UNLESS LABELED 5%
  - THE ORIGATION SOURCE OF A VOLTAGE IS REPRESENTED BY ( VCC ), AND ALL REFERENCES TO THAT VOLTAGE ARE REPRESENTED BY (  $\frac{VCC}{\uparrow}$  ).
  - COMPONENT VALUES SHOWN WITH AN ASTERISK (\*) FOLLOWING THE VALUE OR DASHED BOX, MAY HAVE DIFFERENT VALUES, OR MAY NOT BE STUFFED.

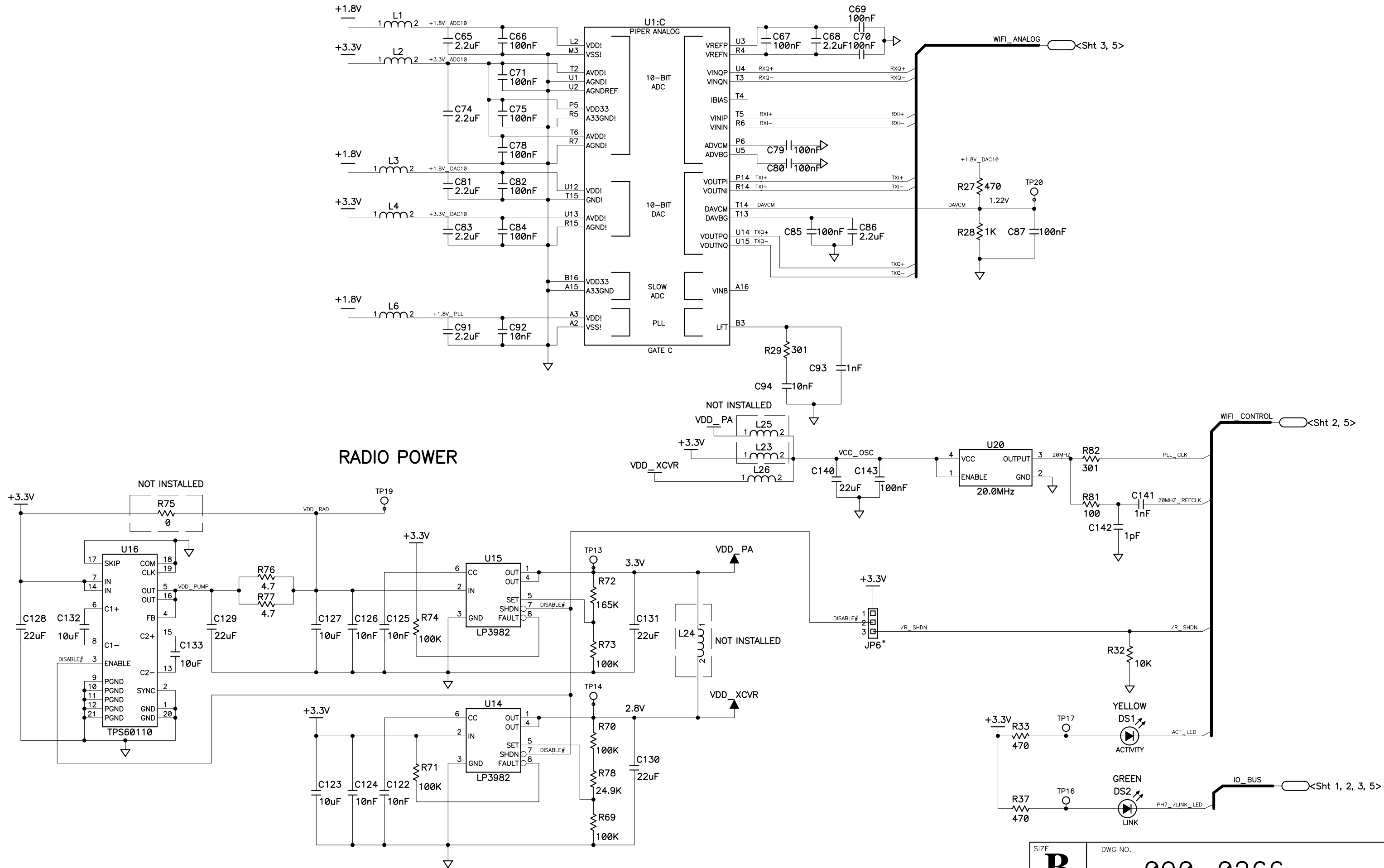
COPYRIGHT 2007, RABBIT SEMICONDUCTOR, INC.

6/2/08

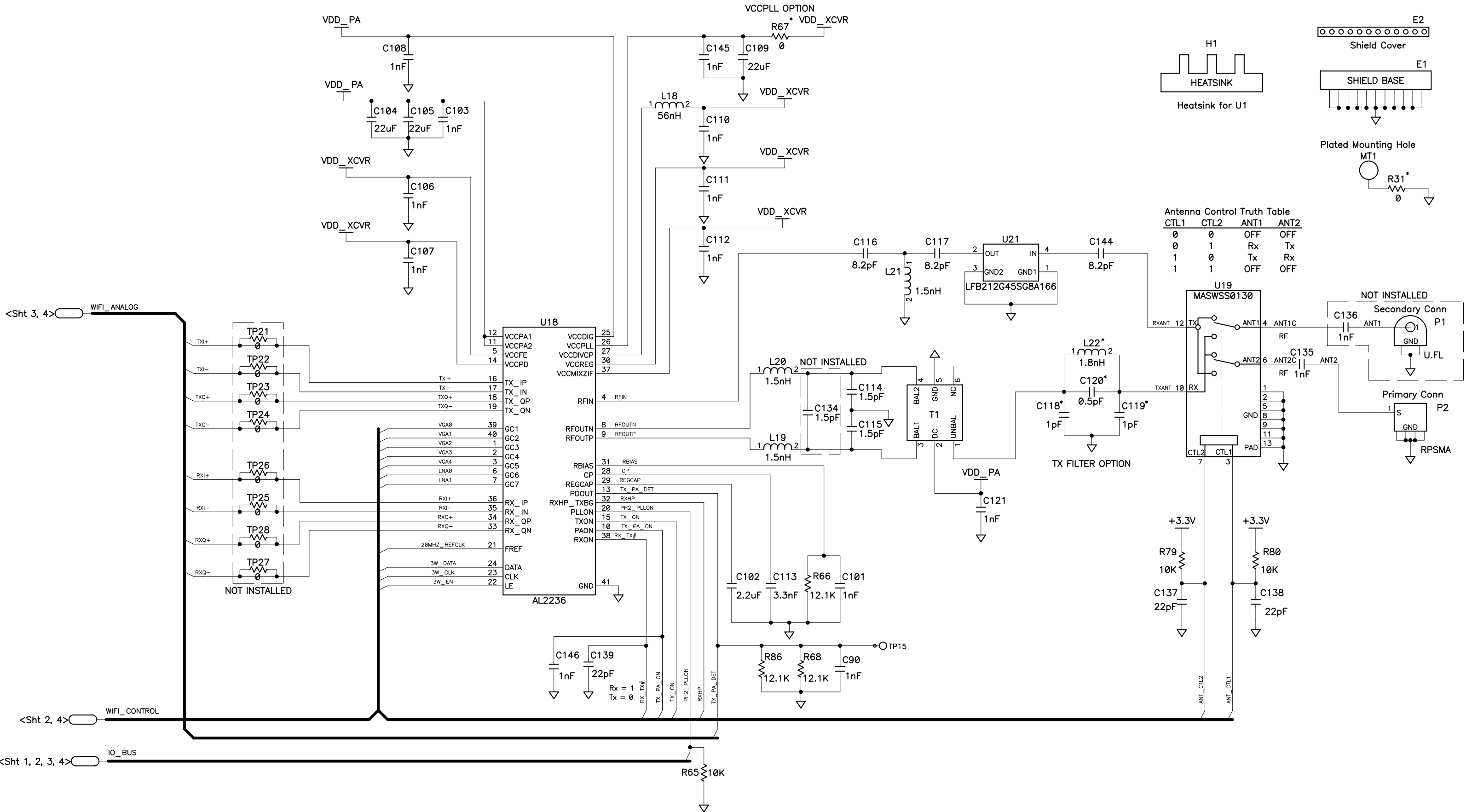
APPEND THE FOLLOWING DOCUMENTS WHEN CHANGING THIS DOCUMENT:		DRAWING CONTENT:		TITLE  SCHEMATIC DIAGRAM RCM54XXW		<b>RABBIT</b> SEMICONDUCTOR  www.rabbit.com					
		DRAWN BY: (INITIAL RELEASE) N LEVINE	10/15/07								
		REVISED BY:									
		APPROVALS: INITIAL RELEASE									
		PROJECT ENGINEER: N LEVINE	10/15/07	SIZE <b>B</b>	DWG NO.  090-0266						
		ENGINEERING MANAGER: B PEISEL									
		SIGNATURES	DATE	SCALE	NONE	RELEASE DATE	6/4/08	SHEET	1	OF	6







802.11B/G RADIO



RCMXXXXW STANDARD CONFIGURATION OPTIONS			
OPTION	RCM5400W	RCM5450W	
SRAM	512K	512K	
FLASH 1	512K	NONE	
FLASH 2	NONE	1M	
FSRAM 1	512K	512K	
FSRAM 2	NONE	512K	
ALT SIGNALS	PORT E [5..7]	PORT E [5..7]	
RADIO PWR CONTROL	Disabled	Disabled	
SERIAL FLASH	1M	2M	
MTG. HOLE GND	Yes	Yes	
VCCPLL	2.8 V	2.8 V	
TX FILTER	Not Used	Not Used	

OPTION: SRAM			
PART	512K		
U3	Installed		
C7, C8	Installed		

OPTION: FLASH 1		
PART	NONE	512K
U4	Not Installed	Installed
C9, C10	Not Installed	Installed

OPTION: FLASH 2		
PART	NONE	1M
U12	Not Installed	Installed
C26, C27	Not Installed	Installed
JP5	0 OHM (1–2)	0 OHM (1–2)

OPTION: FSRAM 1		
PART	512K	
U2	650–0045 Installed	
C3, C4, C5, C6	Installed	
JP4	0 OHM (1–2)	

OPTION: FSRAM 2		
PART	NONE	512K
U11	Not Installed	650–0045 Installed
C22, C23, C24, C25	Not Installed	Installed

OPTION: ALT SIGNALS (SELECTS PIN 37–39 FUNCTION, PORTE[5..7] or SMODE0, SMODE1,STATUS		
PART	PORT E [5..7]	PROG SIGNALS
JP1, JP2, JP3	0 OHM (1–2)	0 OHM (2–3)

OPTION: RADIO PWR CONTROL		
PART	Disabled	Enabled
JP6	0 OHM (1–2)	0 OHM (2–3)

OPTION: SERIAL FLASH		
PART	1M	2M
U17	1 MByte Installed	2 MByte Installed

OPTION: MTG HOLE GND		
PART	Yes	No
R31	Installed	Not Installed

OPTION: VCCPLL			
PART	2.8 V	3.0 V	3.3 V
R67	0 ohms	65 ohms	130 ohms

OPTION: TX FILTER		
PART	Not Used	Used
C120	0 ohms	As Shown
L22, C118, C119	Not Installed	As Shown