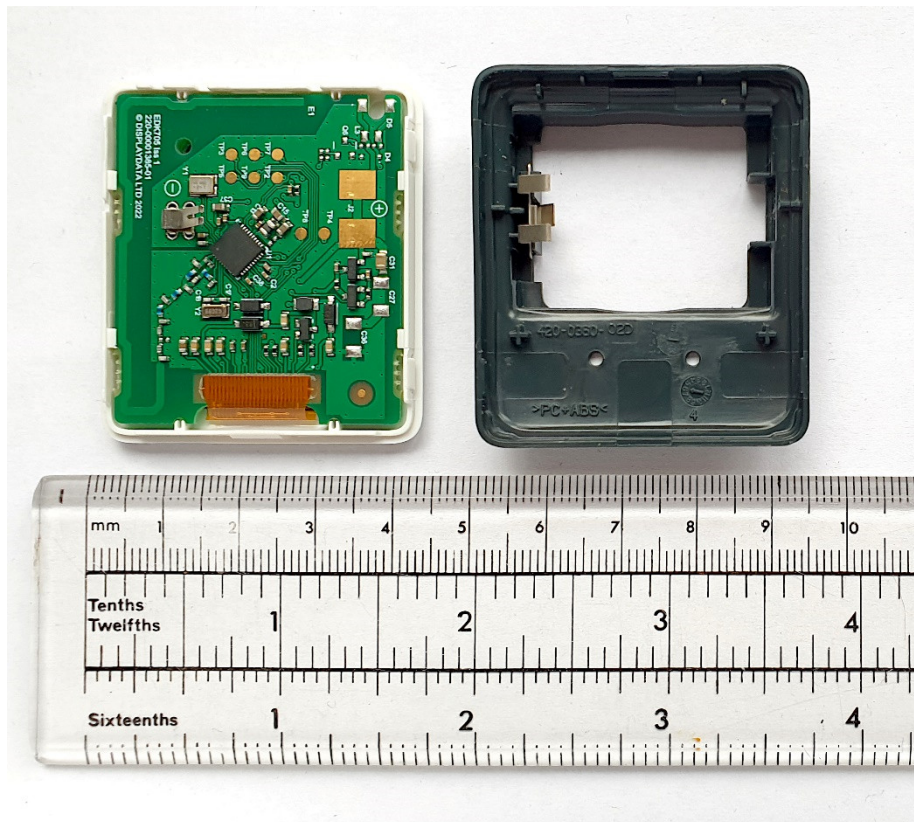
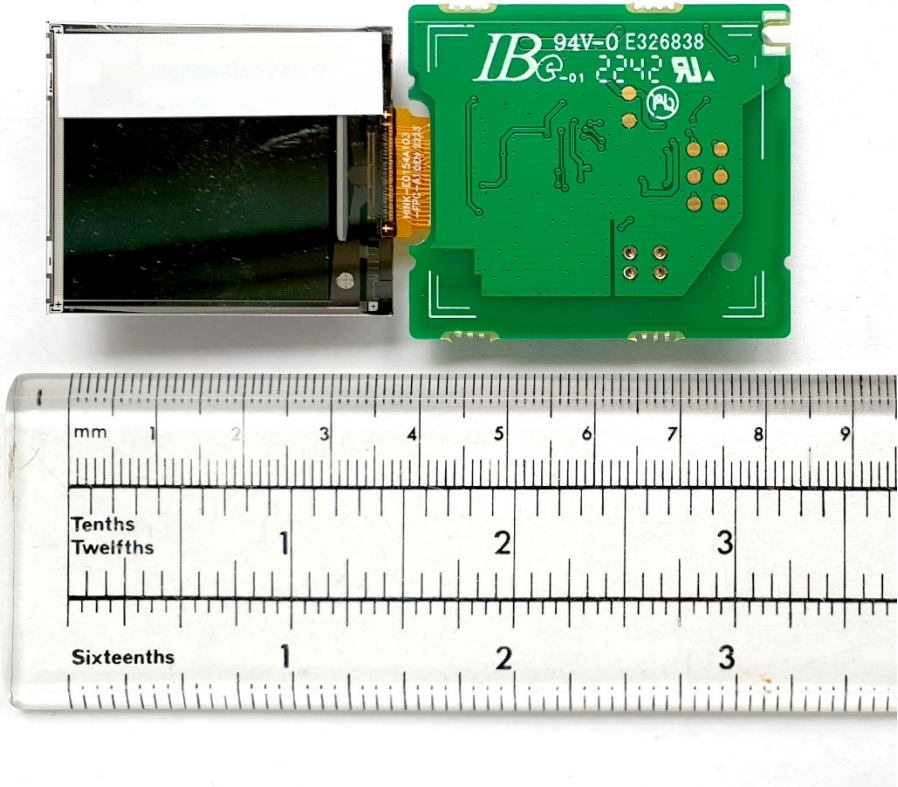


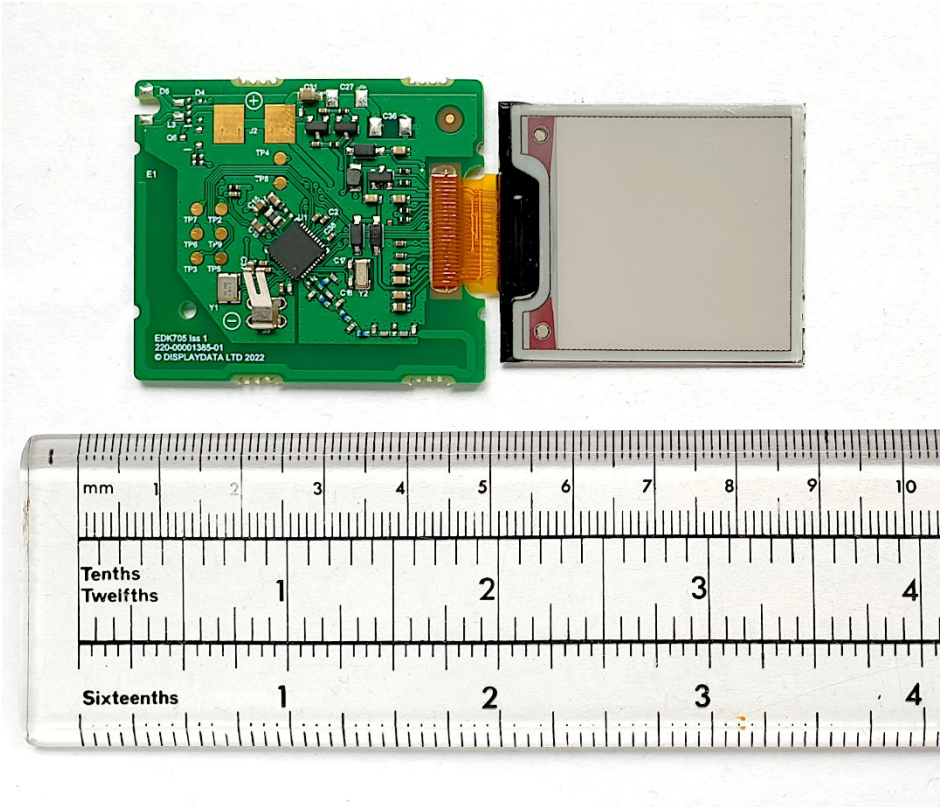
DD16-3A (Chroma 16+) – Battery Cover and Coin cell removed.



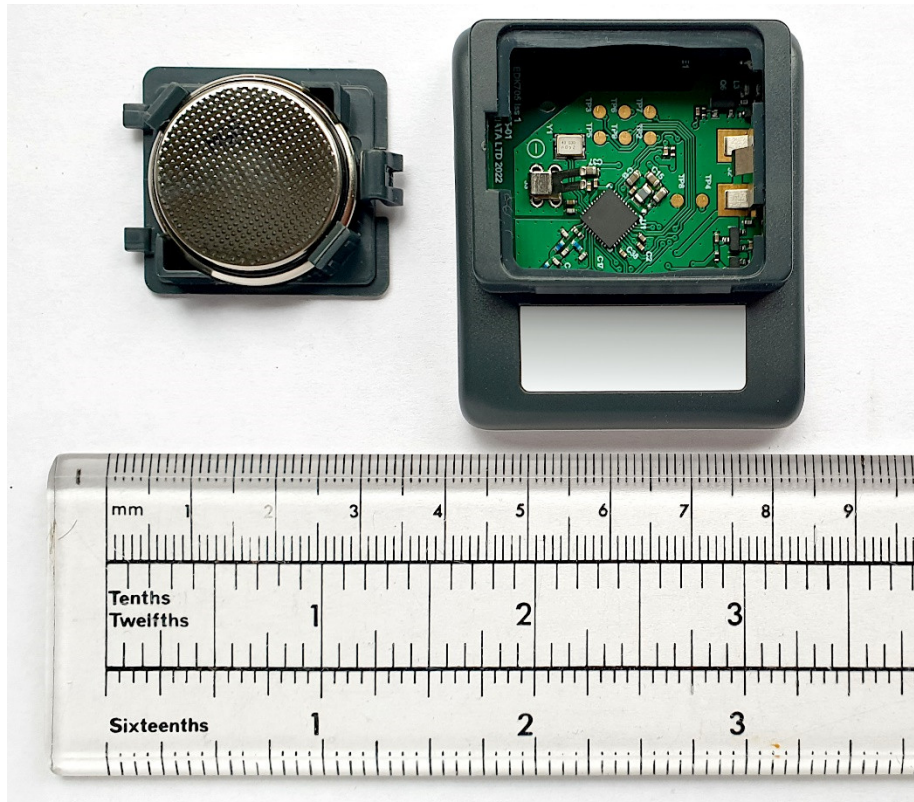
DD16-3A (Chroma 16+) – Front Cover, Battery Cover and Coin cell removed.



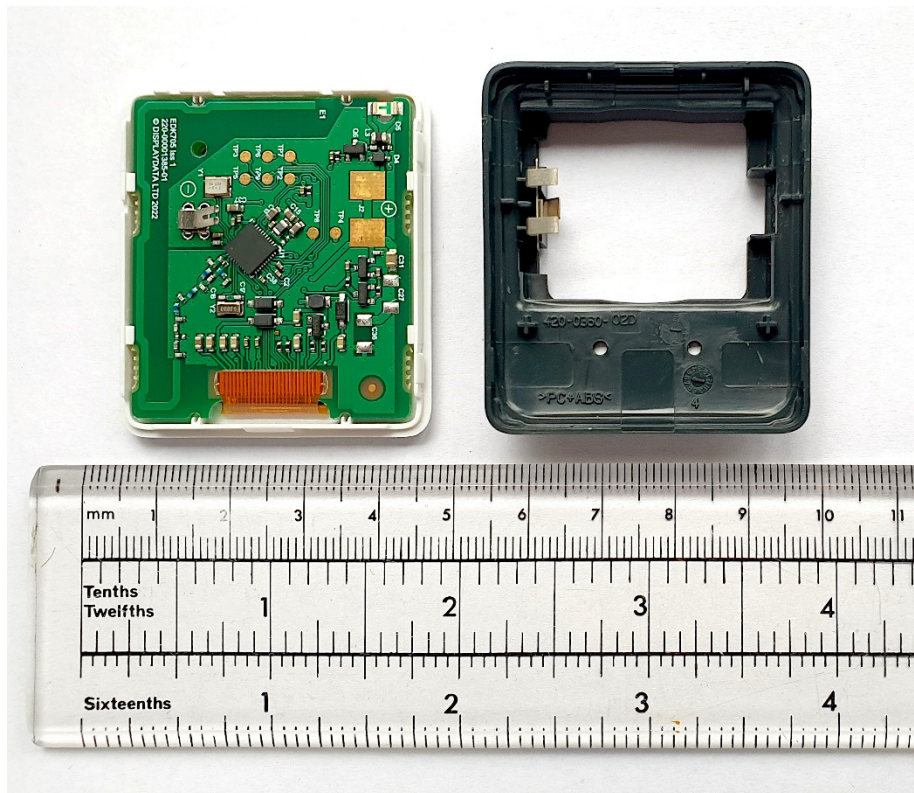
DD16-3A (Chroma 16+) – PCB and display glass rear side.



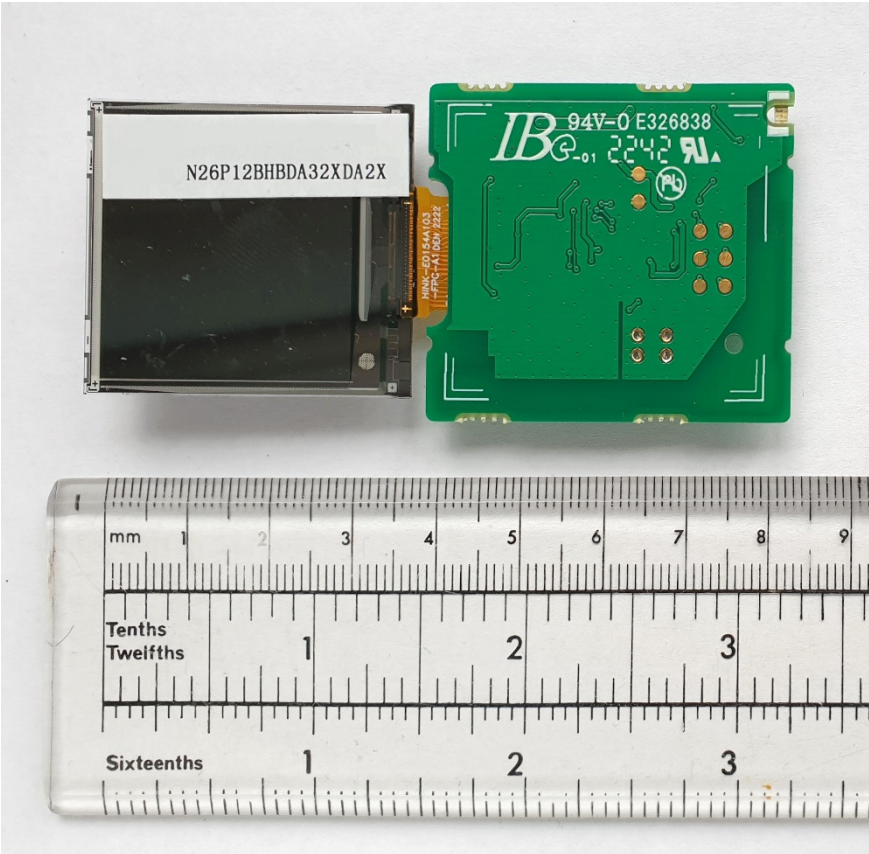
DD16-3A (Chroma 16+) – PCB and display glass front side,



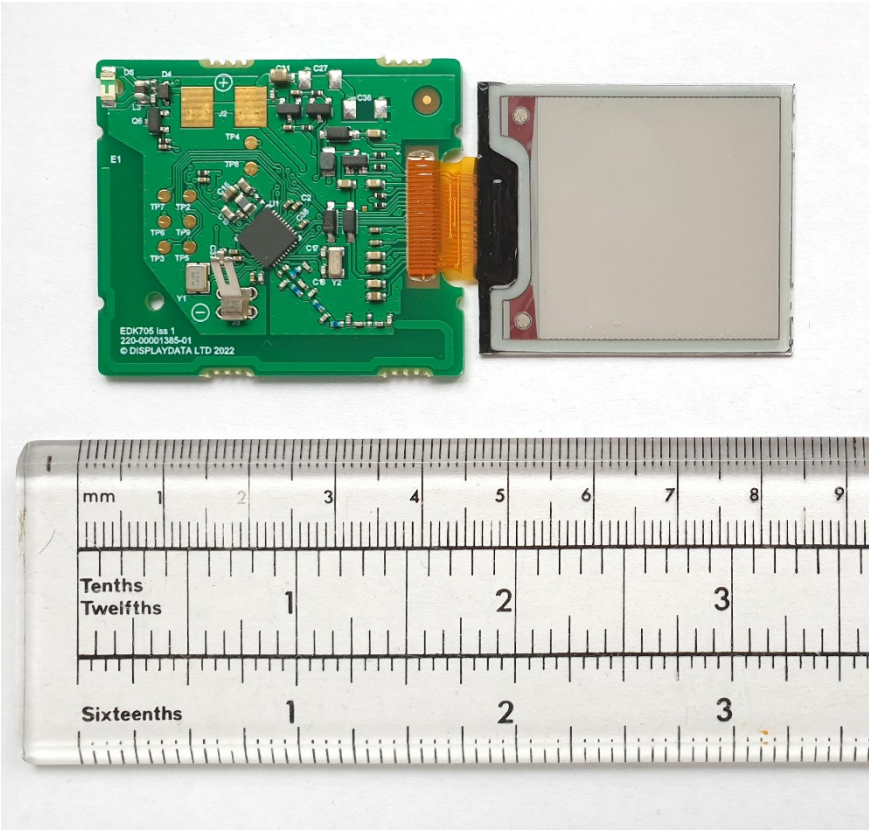
DD16-3A (Chroma 16L) – Battery Cover and Coin cell removed.



DD16-3A (Chroma 16L) – Front Cover, Battery Cover and Coin cell removed.



DD16-3A (Chroma 16L) – PCB and display glass rear side.



DD16-3A (Chroma 16L) – PCB and display glass front side.