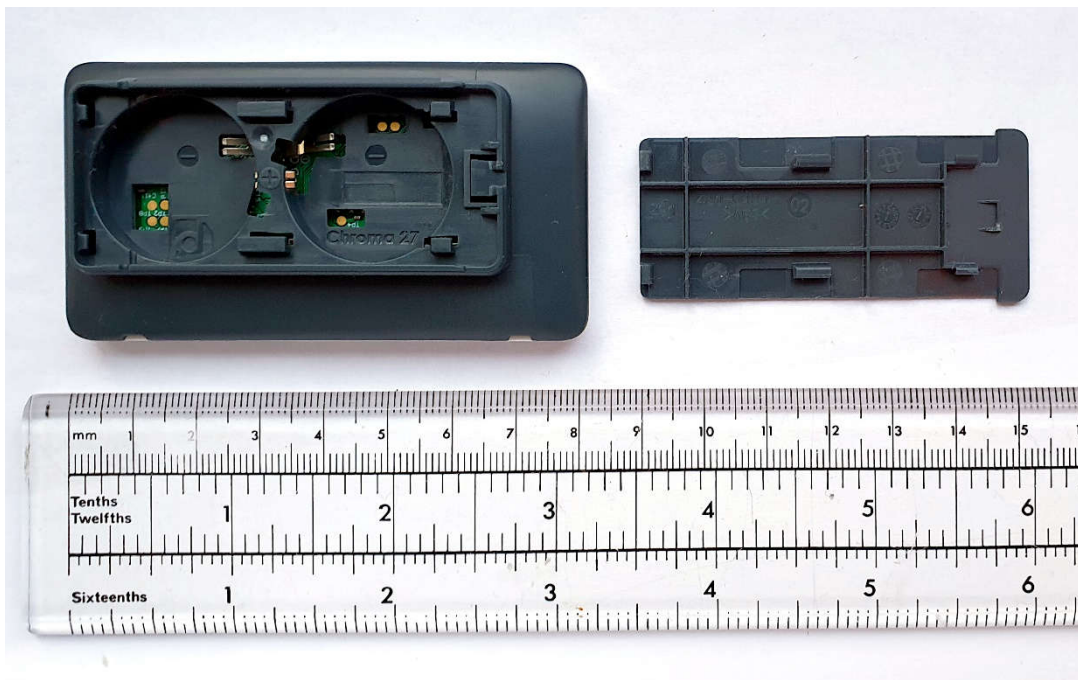


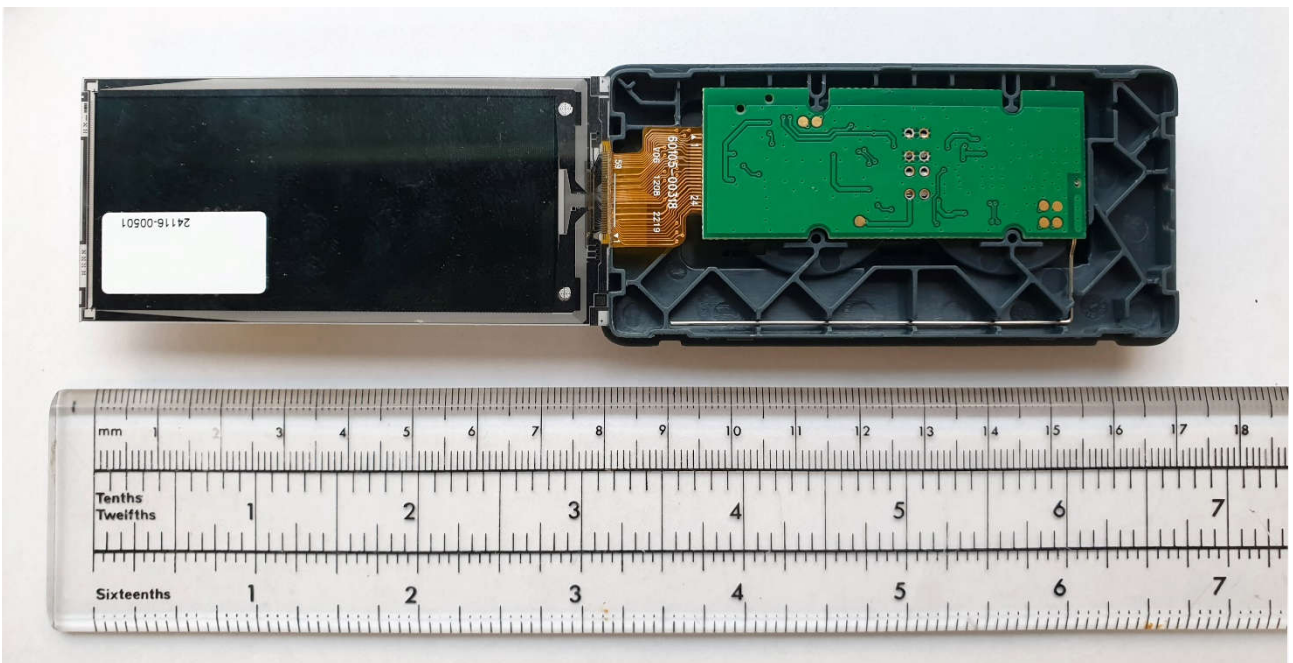
DD27-3A (Chroma 27+) – All components



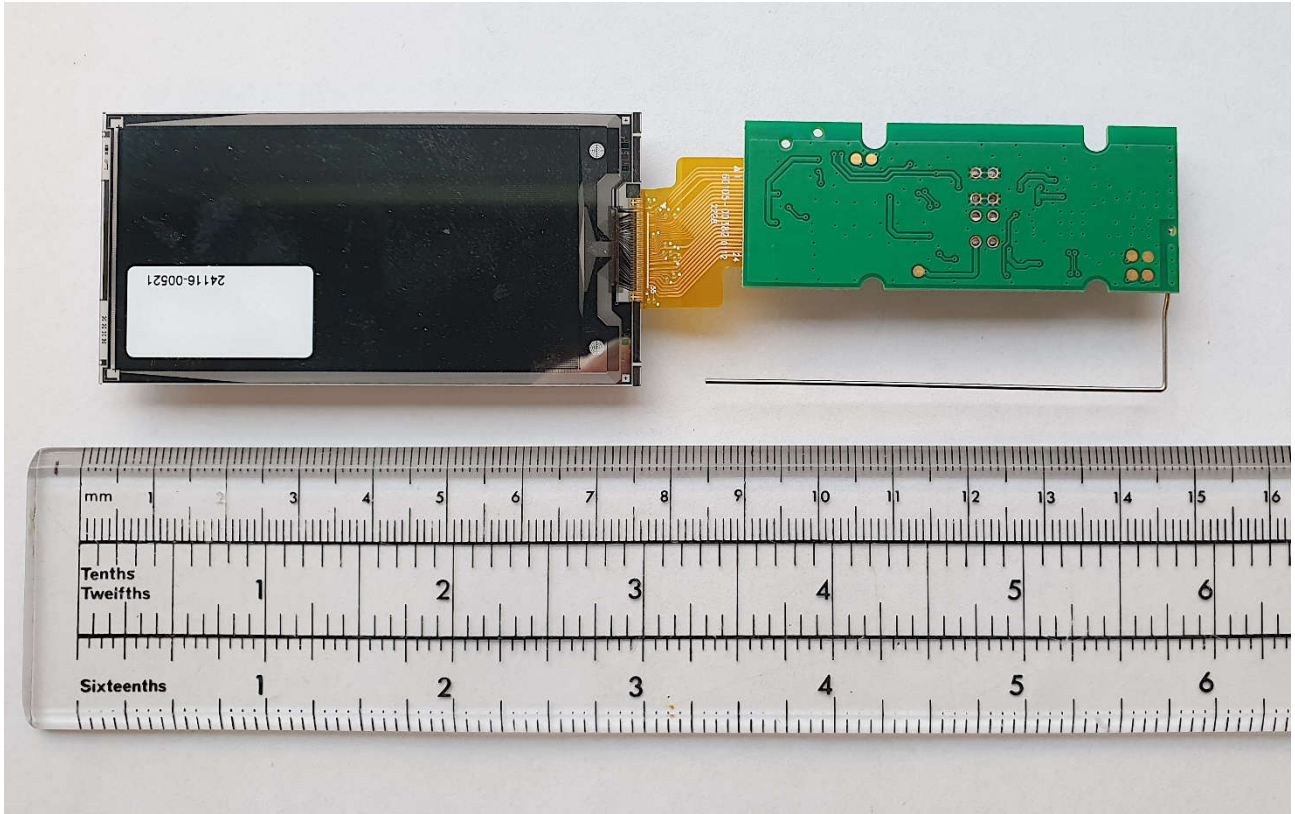
DD27-3A (Chroma 27+) – Battery Cover and 2 x CR2450 coin cells removed.



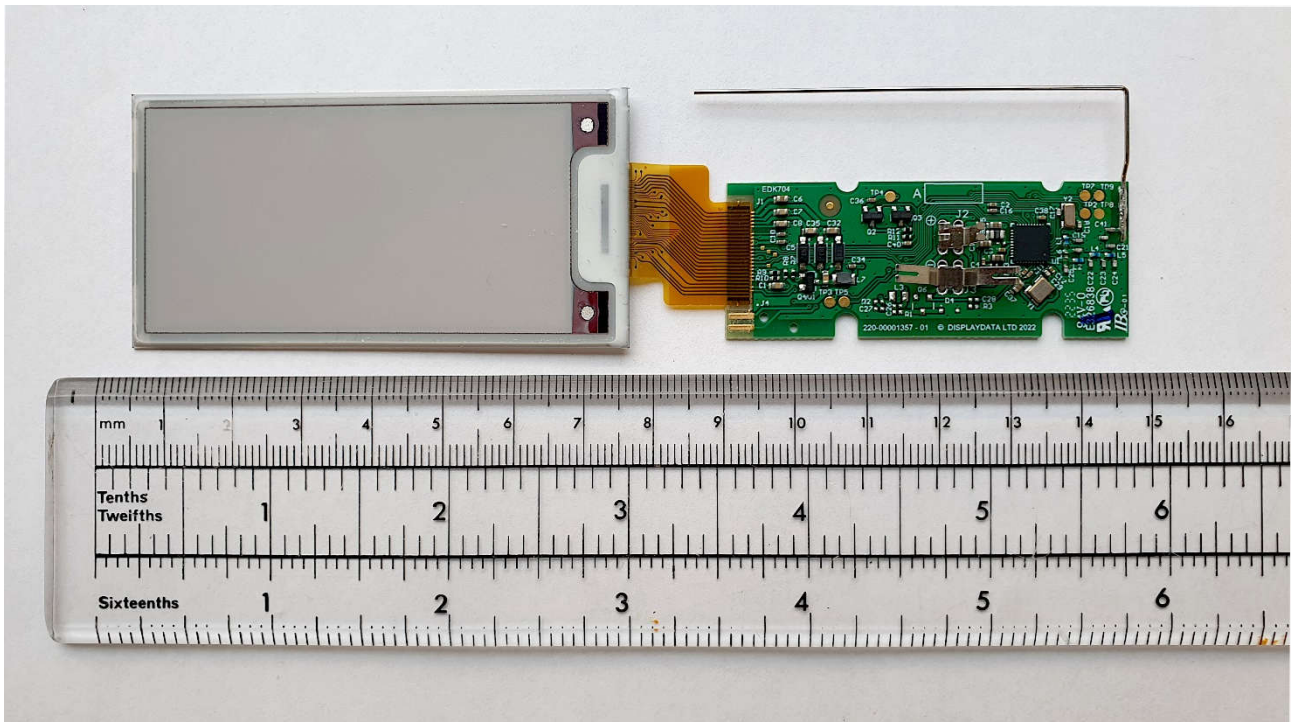
DD27-3A (Chroma 27+) – Front cover removed.



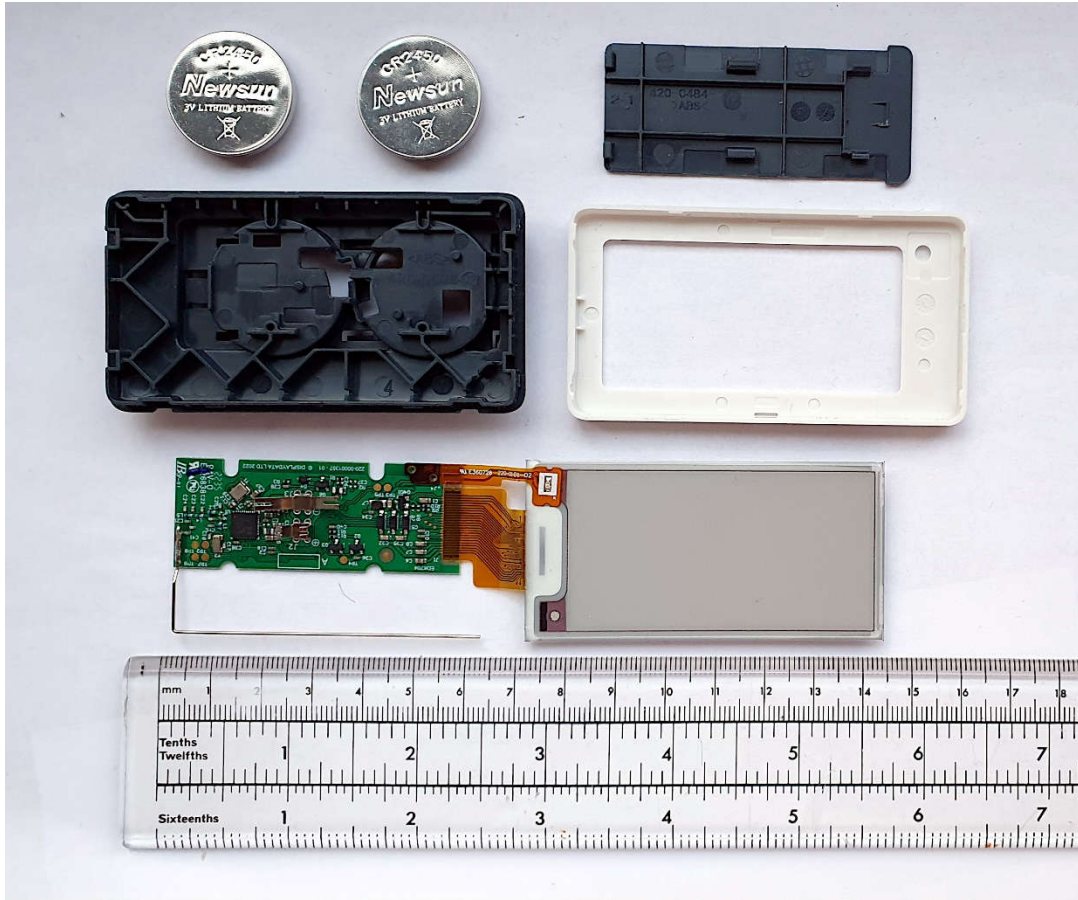
DD27-3A (Chroma 27+) – Front cover removed and display glass folded open.



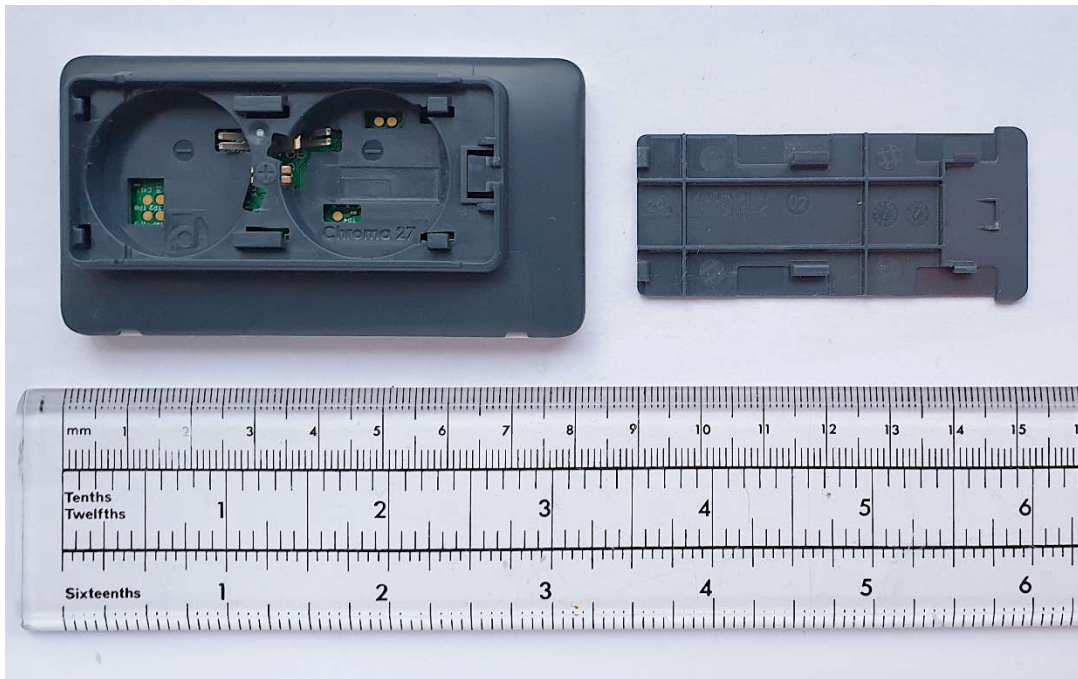
DD27-3A (Chroma 27+) – PCB and display glass rear side.



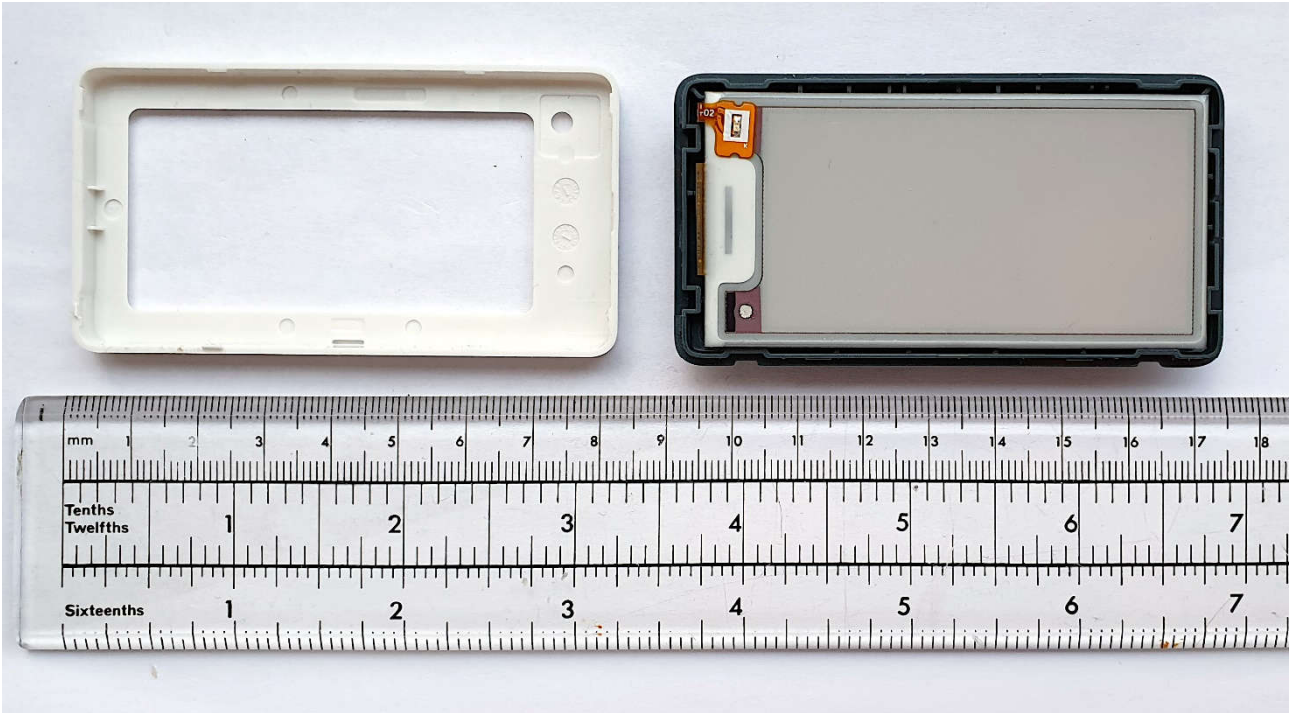
DD27-3A (Chroma 27+) – PCB and display glass front side.



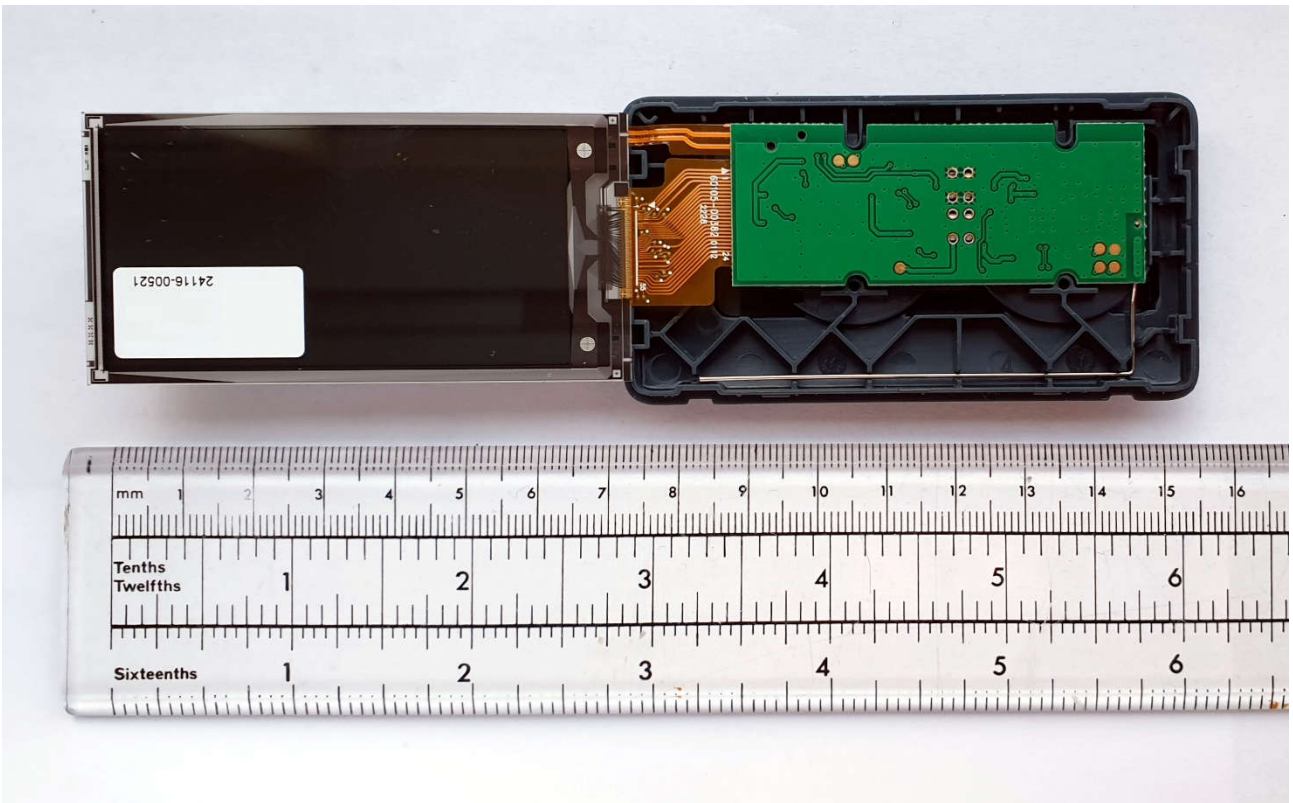
DD27-3A (Chroma 27L) – All components



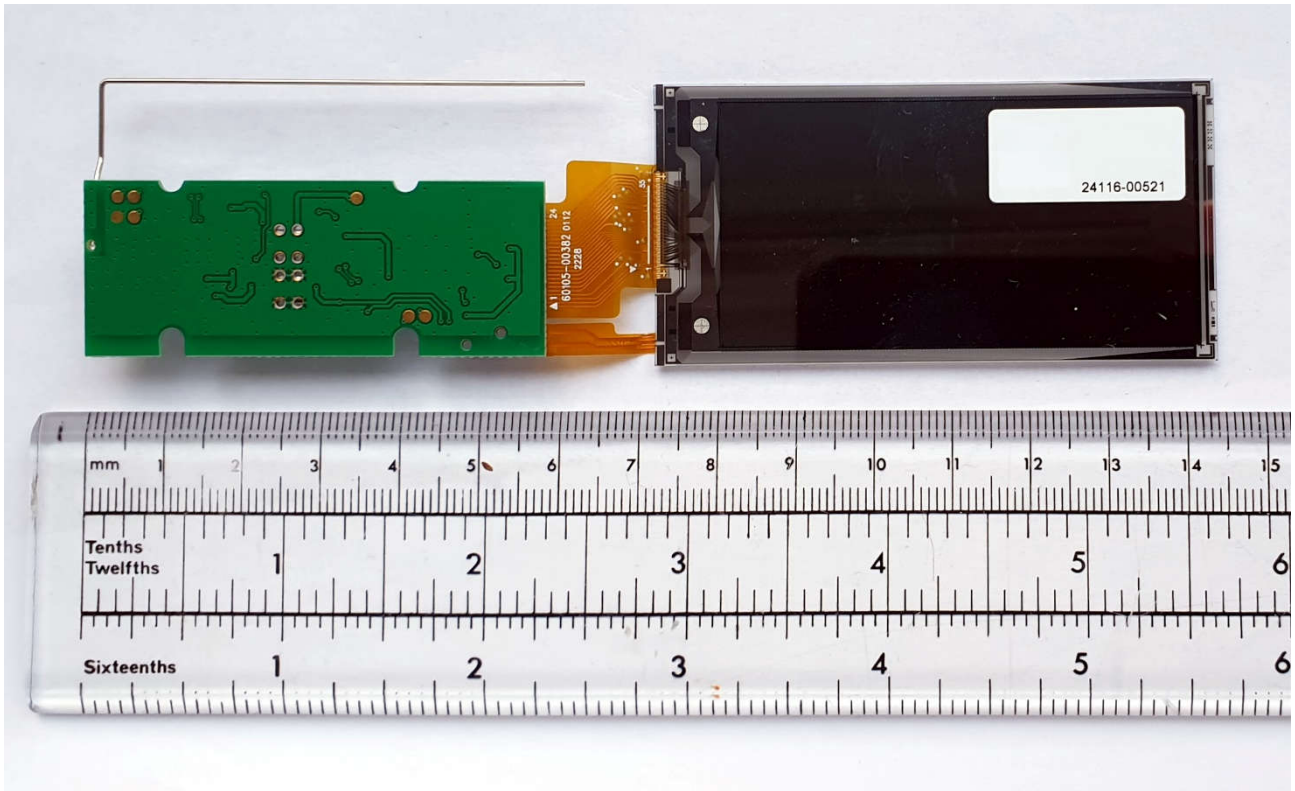
DD27-3A (Chroma 27L) – Battery Cover and 2 x CR2450 coin cells removed.



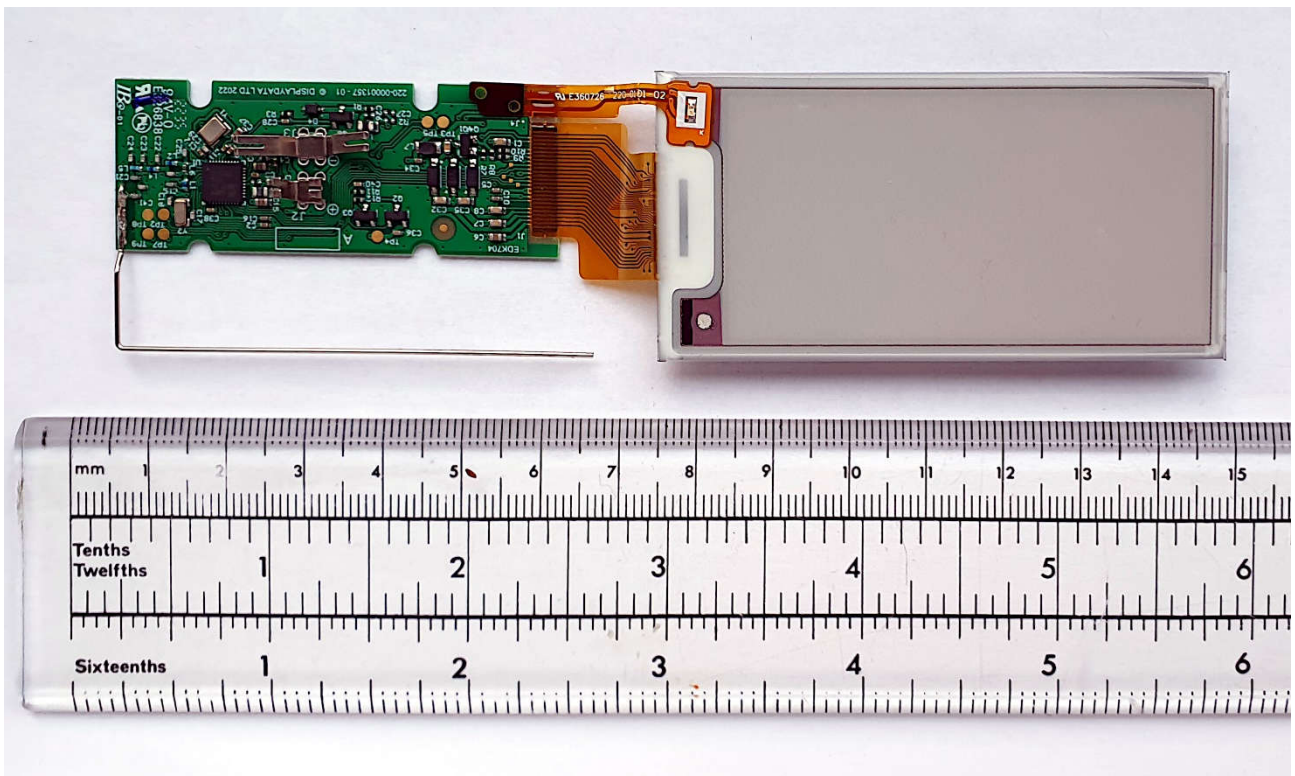
DD27-3A (Chroma 27L) – Front cover removed.



DD27-3A (Chroma 27L) – Front cover removed and display glass folded open.



DD27-3A (Chroma 27L) – PCB and display glass rear side.



DD27-3A (Chroma 27L) – PCB and display glass front side.