

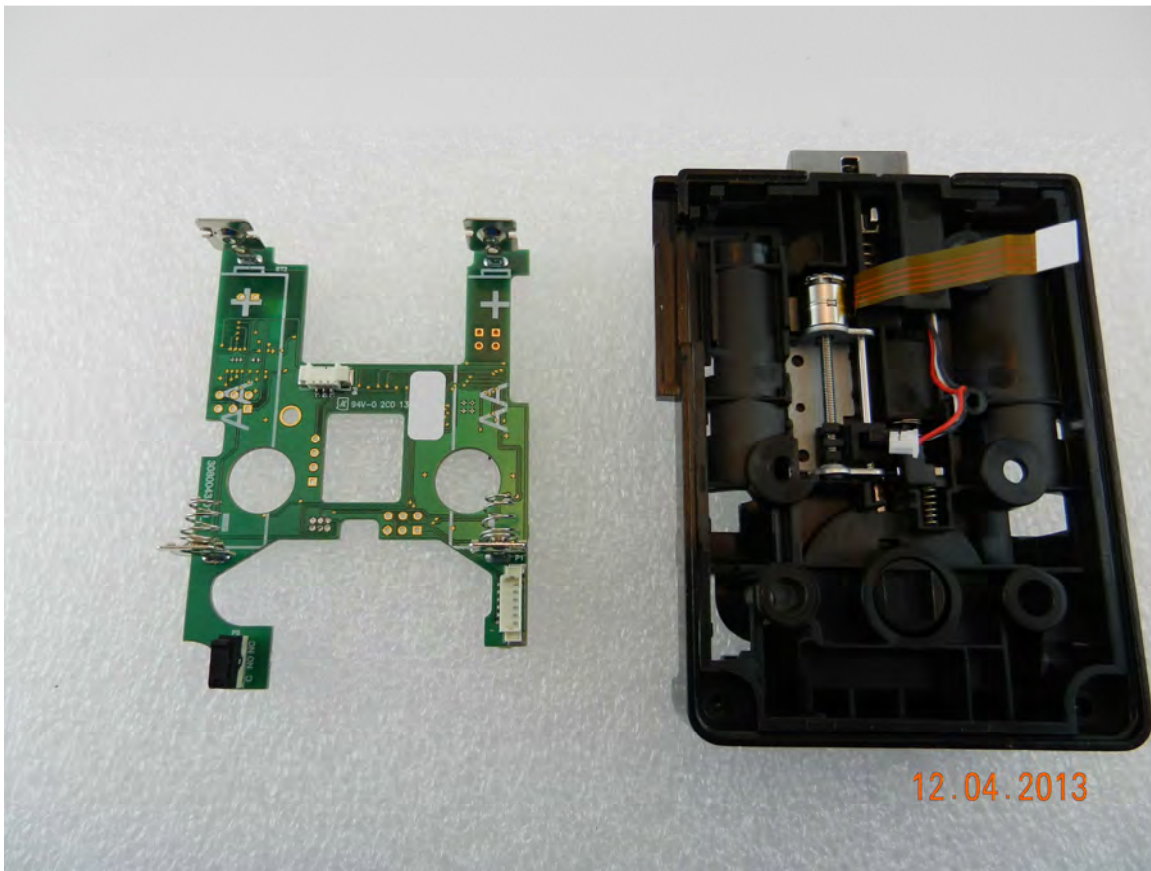


Rear view of reader

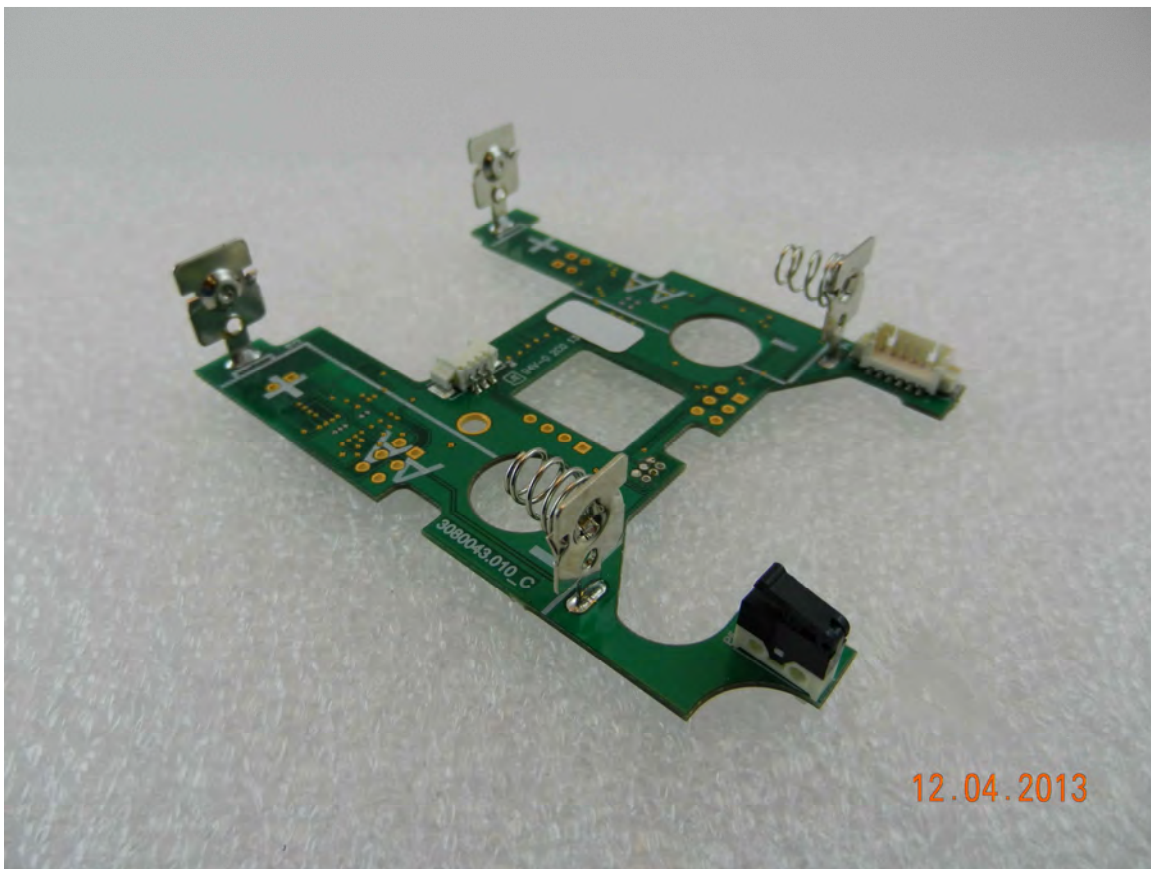
Interior Photos



Lockbody – rear cover removed

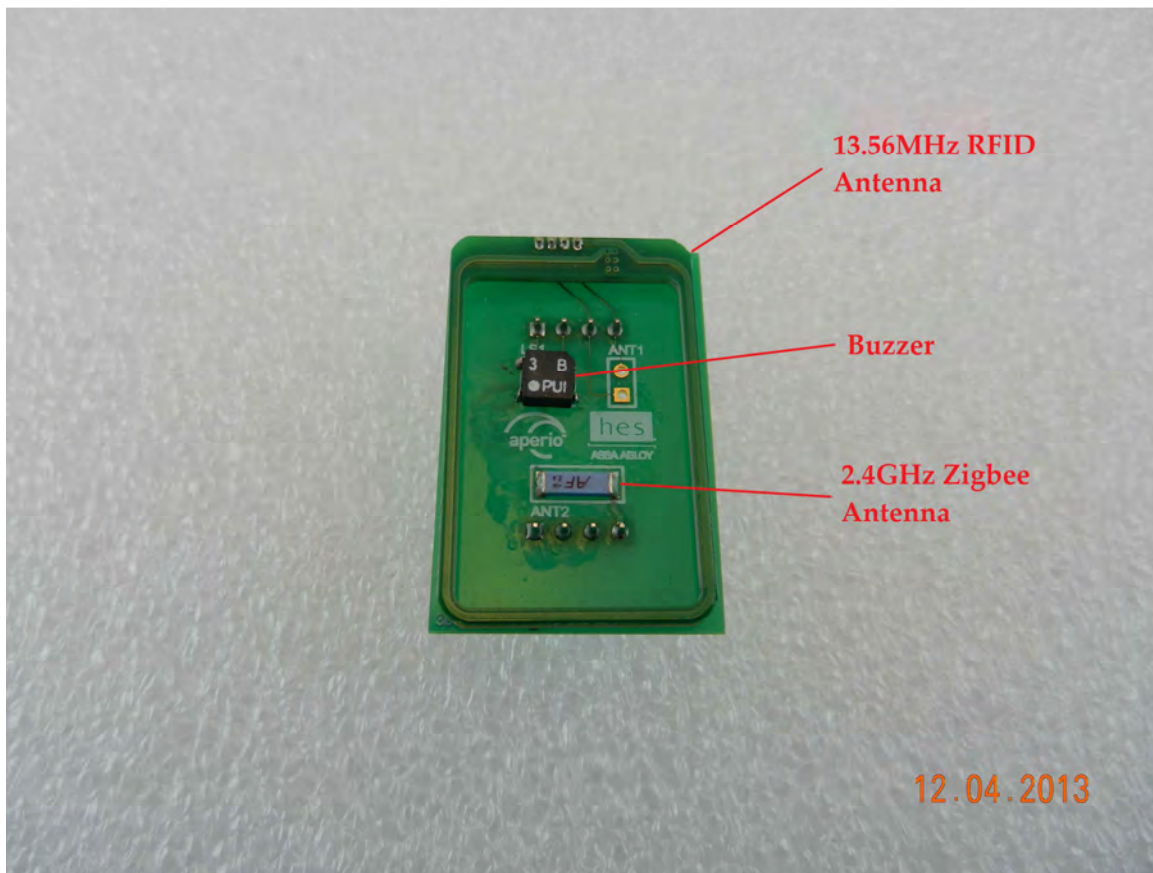


Secure board removed, lockbody internals exposed

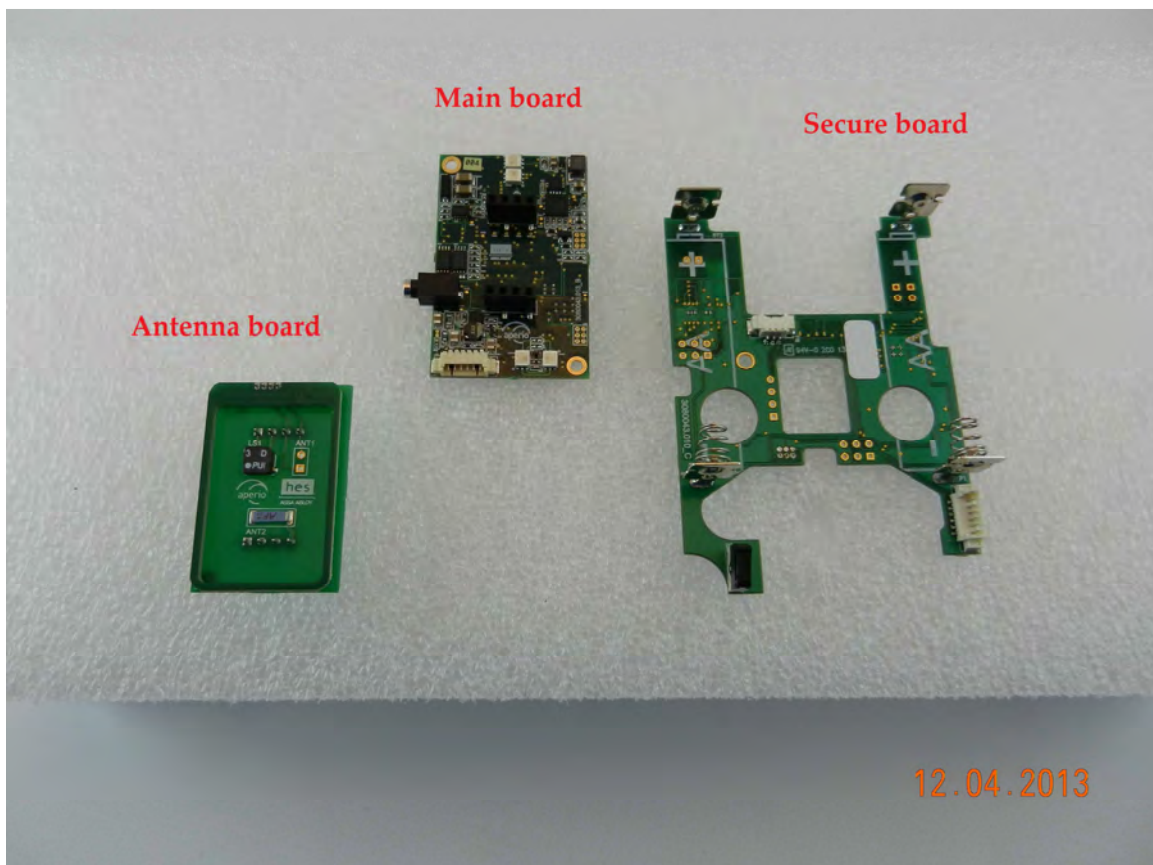


Close-up of secure board





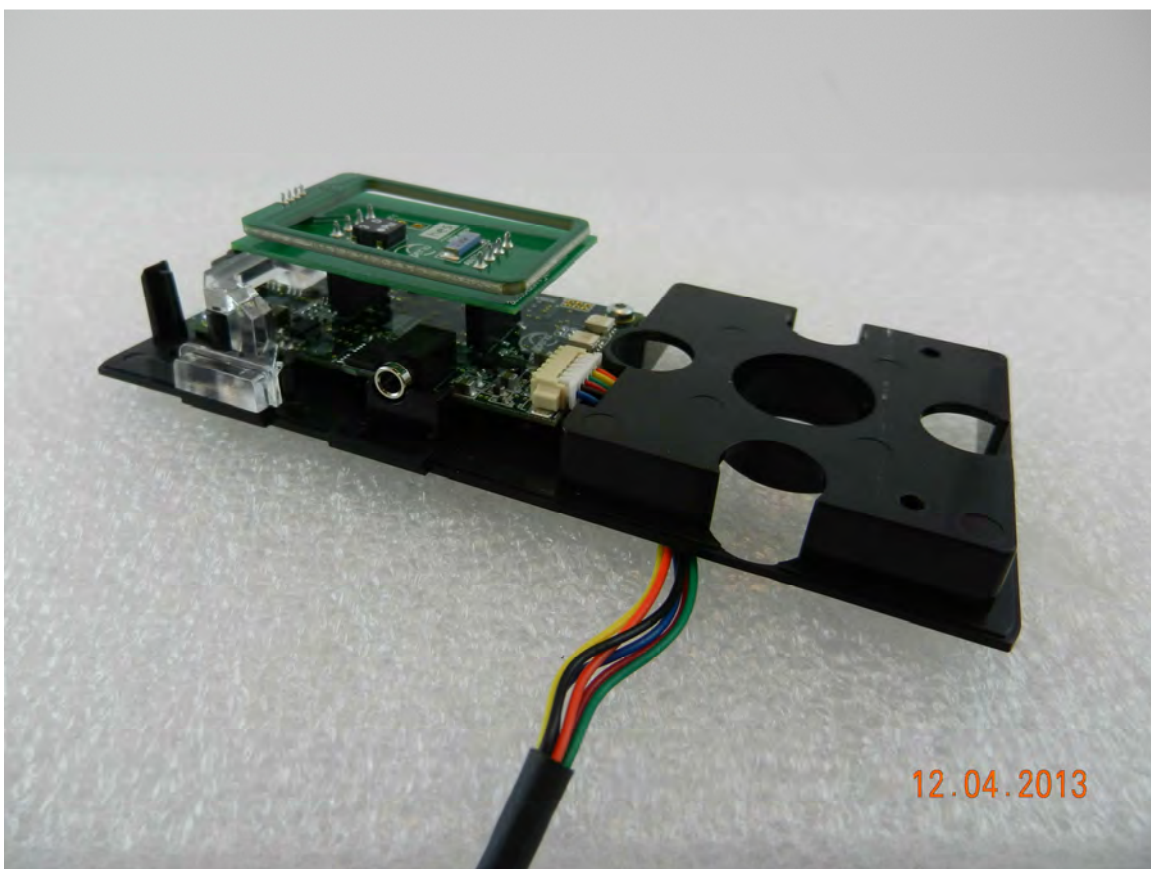
Antenna board



All circuit boards

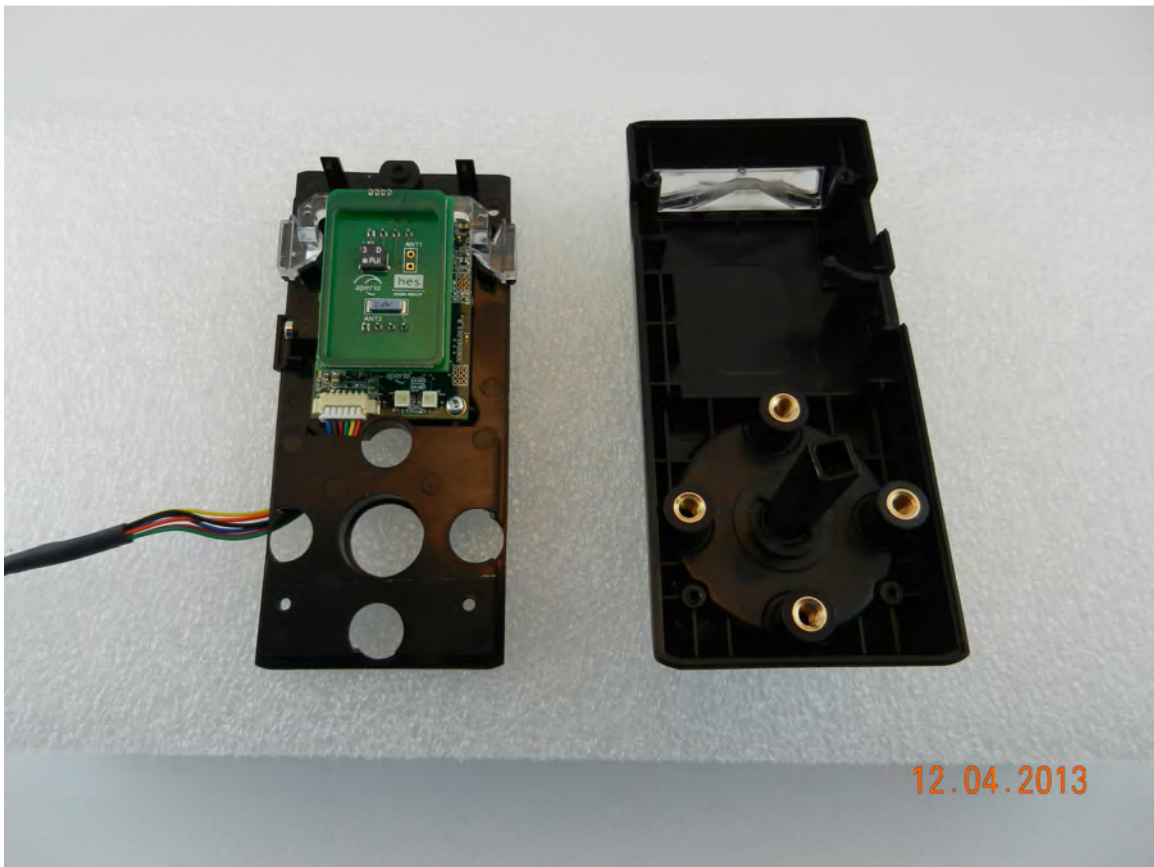


Antenna board mounted on main board with secure board

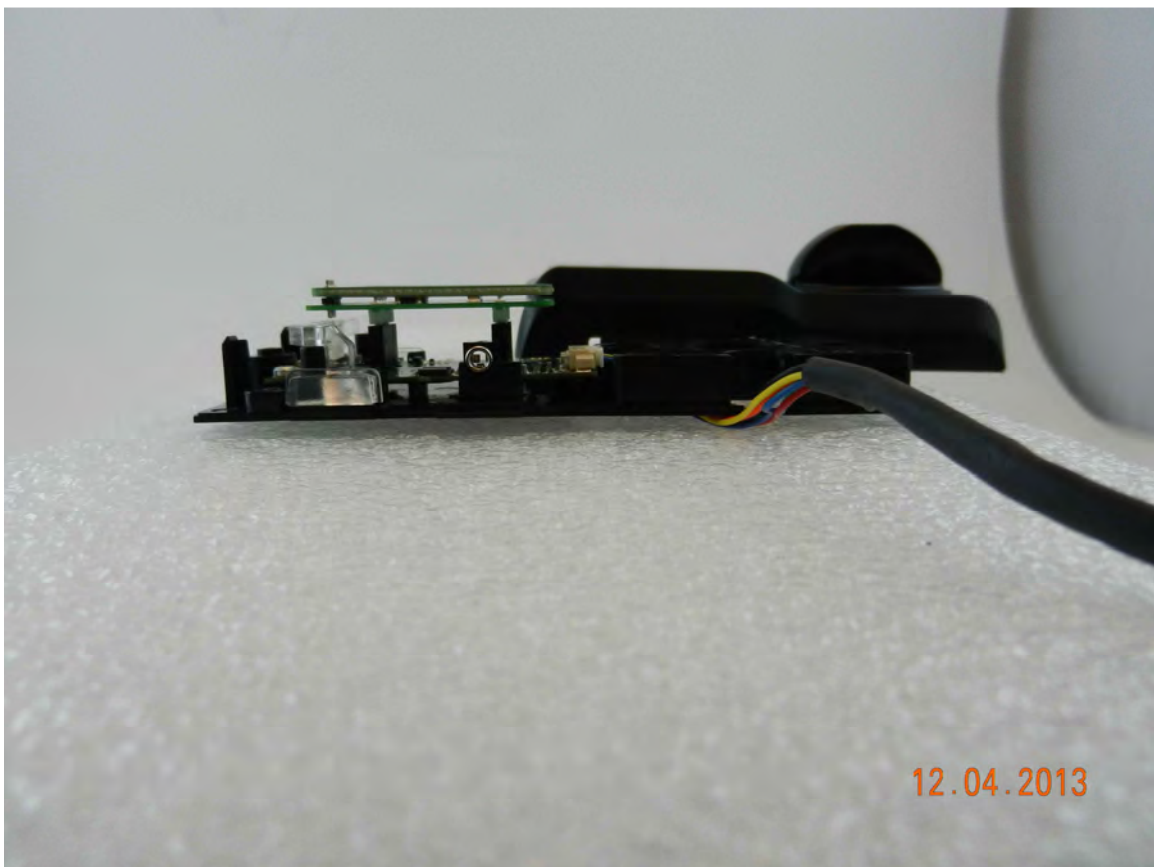


Antenna and main module installed in reader back plate





Reader back plate and cover



Side view (distance between antenna and cover = 1.5mm)