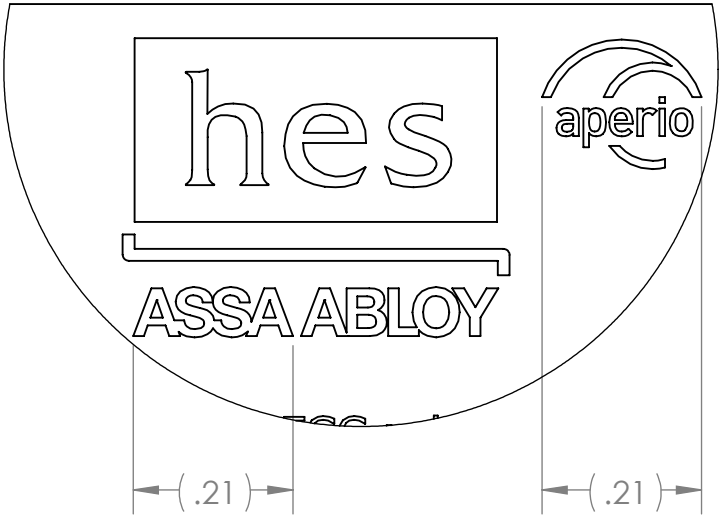
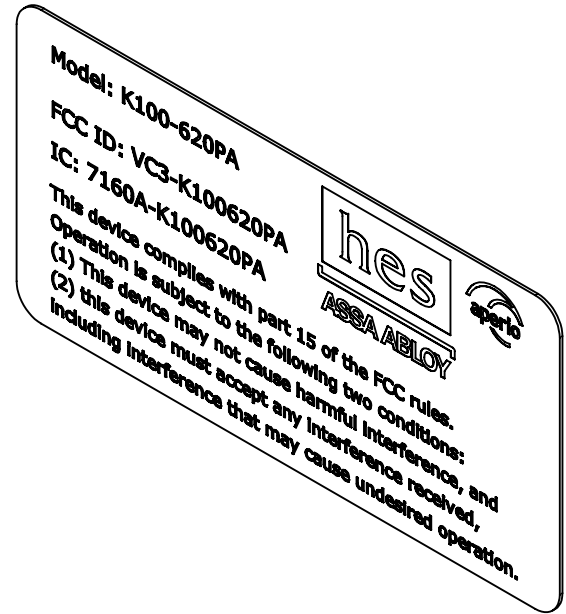


- NOTES: UNLESS OTHERWISE SPECIFIED.
- COMPONENTS AND OR PARTS TO COMPLY WITH EU DIRECTIVE 2002/95/EC (RoHS).
  - MATERIAL: COATED PAPER WITH PERMANENT LATEX ADHESIVE.  
USE LABEL P/N: 3000021.006 OR HES APPROVED EQUIVALENT.
  - WHITE LABEL WITH BLACK LETTERING,
  - FINISH: PRINTED IN DENSE BLACK INK. TEXT SHALL BE SHARP AND LEGIBLE.
  - FONT: ARIAL  
FONT HEIGHT: 4 POINT MINIMUM  
ALIGNMENT: LEFT JUSTIFIED
  - THIS CHARACTER TO BE DETERMINED BY THE MODEL NUMBER SHOWN IN TABLE I.
  - HES LOGO DEFINED BY DRAWING 4000505.001.
  - APERIO LOGO DEFINED BY DRAWING 4000505.002.
  - PARTS SHALL BE CLEAN AND FREE OF FOREIGN MATERIAL.
  - PARTS SHALL BE PACKAGED TO PREVENT DAMAGE RESULTING FROM SHIPPING, STORAGE, AND HANDLING.



DETAIL A  
SCALE 4 : 1  
SIZE RELATIONSHIP SHALL BE MAINTAINED

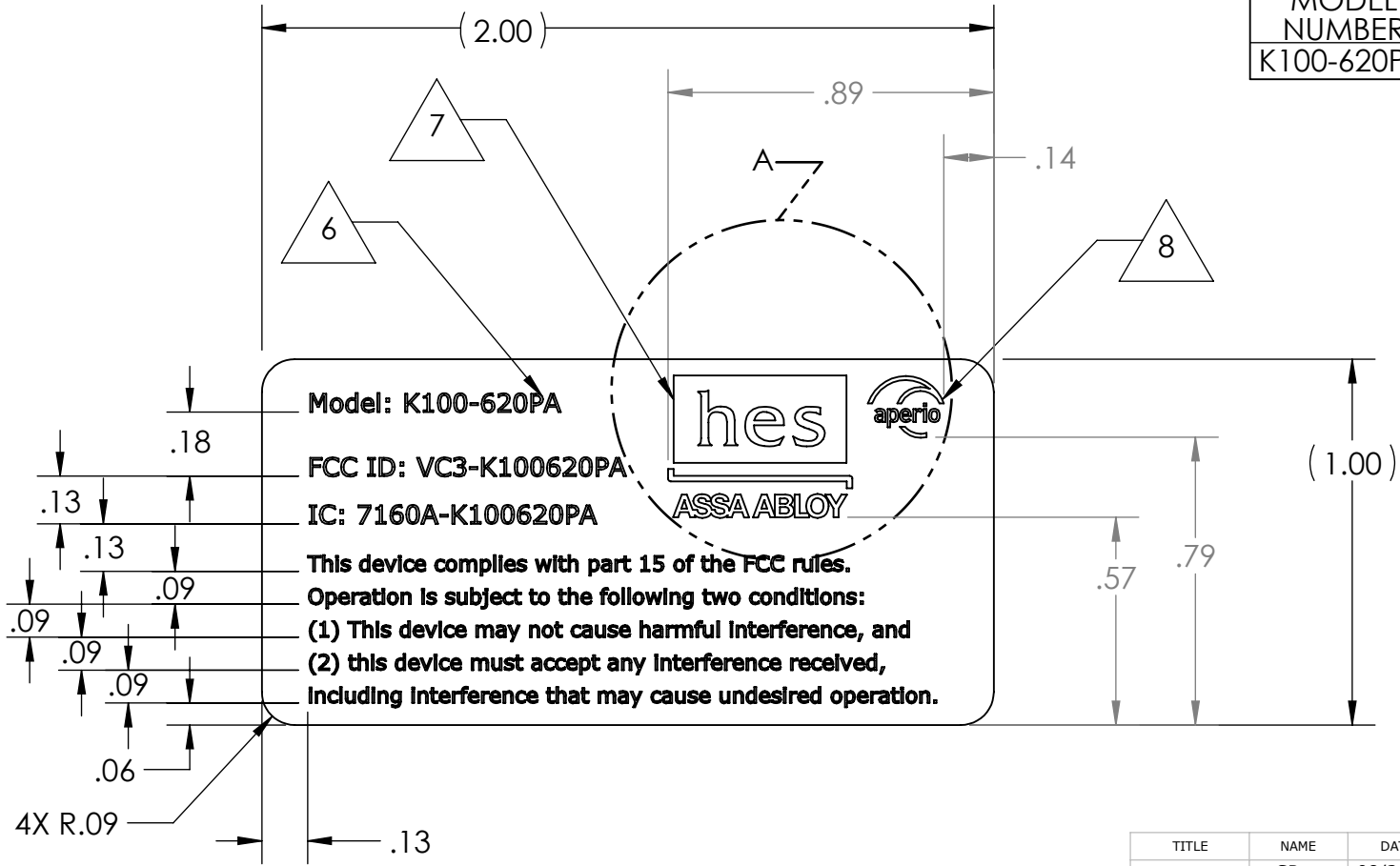


TABLE I			
MODEL NUMBER	FCC ID	IC	DESCRIPTION
K100-620PA	VC3-K100620PA	7160A-K100620PA	PROX

TITLE	NAME	DATE
DRAWN BY	SR	08/21/12
R&D	JP	08/21/12
MFG ENGR	DJ	08/23/12
QA	RC	08/23/12



STATUS:  
**UNRELEASED**

**HANCHETT ENTRY SYSTEMS, INC.**  
10027 S. 51st Street, Suite 102 - Phoenix AZ 85044  
P (623)582-4626 - F (623)582-4641  
ASSA ABLOY, the global leader in door opening solutions

LABEL: FCC, APERIO 620 LF

SIZE	DWG. NO.	REV.
<b>B</b>	5080021.003	<b>X01</b>
SCALE: 2:1		PRINT DATE: 8/24/2012
		LAST SAVED BY: srivera
		SHEET 1 OF 1

THIS DOCUMENT IS THE CONFIDENTIAL PROPERTY OF HES, INC. AND IS LOANED SUBJECT TO RETURN UPON DEMAND. TITLE TO THIS DOCUMENT IS NEVER TO BE SOLD OR TRANSFERRED FOR ANY REASON. THIS DOCUMENT IS TO BE USED ONLY PURSUANT TO WRITTEN LICENSE OR WRITTEN INSTRUCTIONS OF HES, INC. ALL RIGHTS TO DESIGN AND INVENTIONS ARE RESERVED BY HES, INC. POSSESSION OF THE DOCUMENT IS ACCEPTED SUBJECT TO THE FOREGOING. © HES, INC. 2012

UNLESS OTHERWISE SPECIFIED  
DIMENSIONS ARE IN INCHES  
TOLERANCES ARE:  
FRACTIONAL ±1/32  
ANGLES ±1°  
.XX ±.01  
.XXX ±.005

DO NOT SCALE DRAWING  
INTERPRET PER ASME Y14.5M-2009

FAMILY NAME: