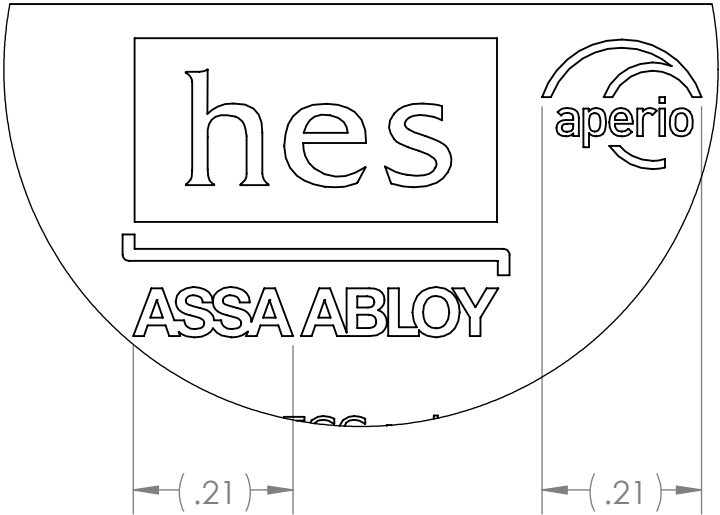
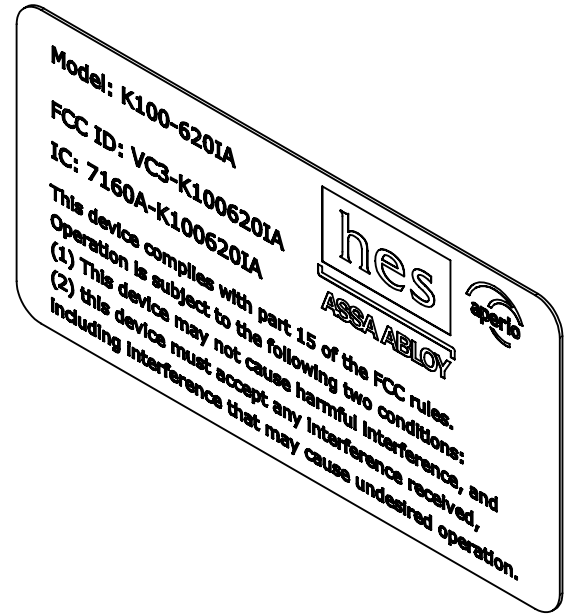


- NOTES: UNLESS OTHERWISE SPECIFIED.
- COMPONENTS AND OR PARTS TO COMPLY WITH EU DIRECTIVE 2002/95/EC (RoHS).
 - MATERIAL: COATED PAPER WITH PERMANENT LATEX ADHESIVE.
USE LABEL P/N: 3000021.006 OR HES APPROVED EQUIVALENT.
 - WHITE LABEL WITH BLACK LETTERING,
 - FINISH: PRINTED IN DENSE BLACK INK. TEXT SHALL BE SHARP AND LEGIBLE.
 - FONT: ARIAL
FONT HEIGHT: 4 POINT MINIMUM
ALIGNMENT: LEFT JUSTIFIED
 - THIS CHARACTER TO BE DETERMINED BY THE MODEL NUMBER SHOWN IN TABLE I.
 - HES LOGO DEFINED BY DRAWING 4000505.001.
 - APERIO LOGO DEFINED BY DRAWING 4000505.002.
 - PARTS SHALL BE CLEAN AND FREE OF FOREIGN MATERIAL.
 - PARTS SHALL BE PACKAGED TO PREVENT DAMAGE RESULTING FROM SHIPPING, STORAGE, AND HANDLING.



DETAIL A
SCALE 4 : 1
SIZE RELATIONSHIP SHALL
BE MAINTAINED

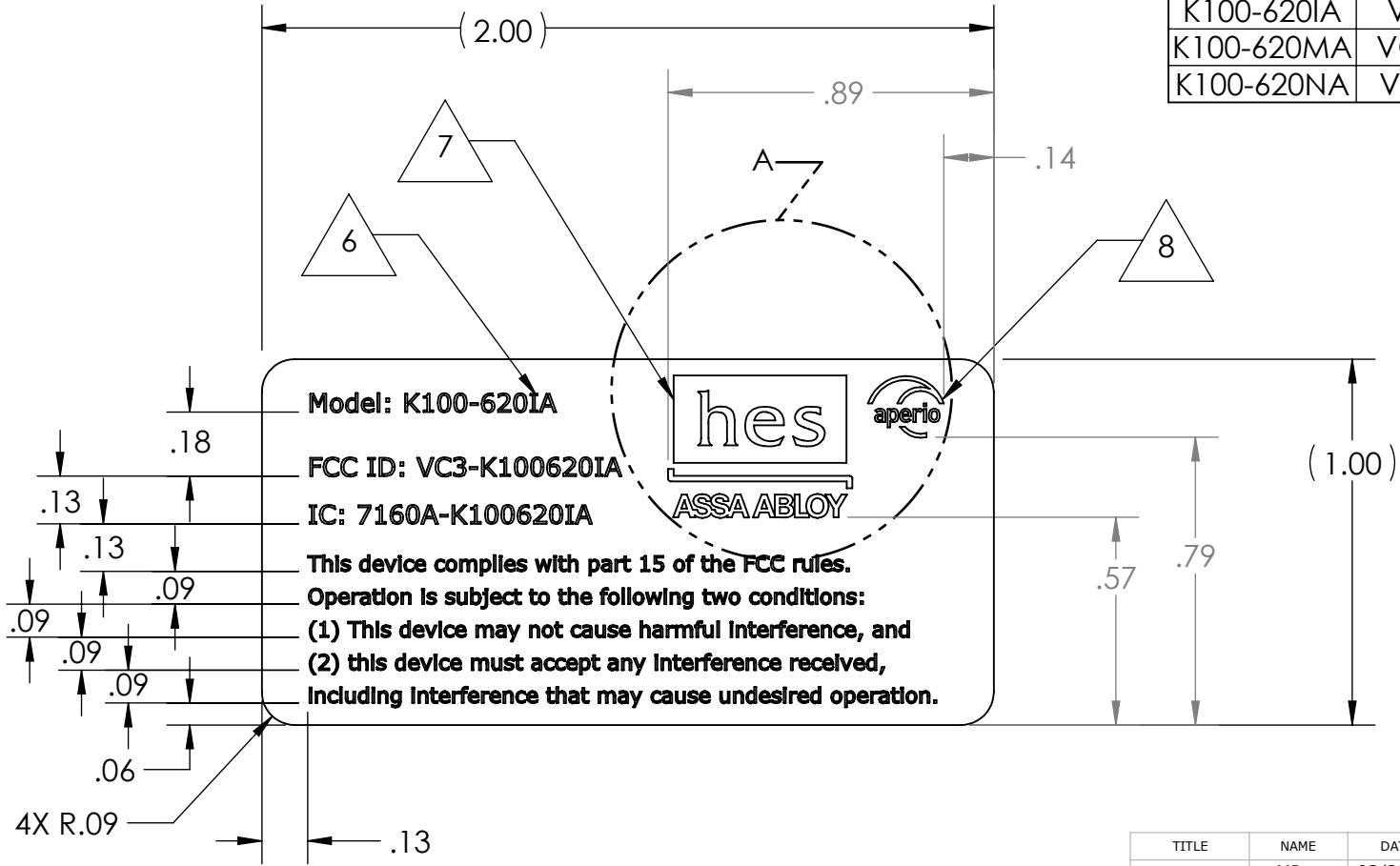


TABLE I			
MODEL NUMBER	FCC ID	IC	DESCRIPTION
K100-620IA	VC3-K100620IA	7160A-K100620IA	iCLASS
K100-620MA	VC3-K100620MA	7160A-K100620MA	MiFARE
K100-620NA	VC3-K100620NA	7160A-K100620NA	NFC

X03

X03

TITLE	NAME	DATE
DRAWN BY	MP	02/23/12
R&D	JP	03/05/12
MFG ENGR	EE	05/17/12
QA	RC	05/17/12



STATUS:
UNRELEASED



HANCHETT ENTRY SYSTEMS, INC.
10027 S. 51st Street, Suite 102 - Phoenix AZ 85044
P (623)582-4626 - F (623)582-4641
ASSA ABLOY, the global leader in door opening solutions

LABEL: FCC, APERIO 620 HF

SIZE	DWG. NO.	REV.
B	5080021.001	X03
SCALE: 2:1	PRINT DATE: 8/24/2012	LAST SAVED BY: srivera
SHEET 1 OF 1		

THIS DOCUMENT IS THE CONFIDENTIAL PROPERTY OF HES, INC. AND IS LOANED SUBJECT TO RETURN UPON DEMAND. TITLE TO THIS DOCUMENT IS NEVER TO BE SOLD OR TRANSFERRED FOR ANY REASON. THIS DOCUMENT IS TO BE USED ONLY PURSUANT TO WRITTEN LICENSE OR WRITTEN INSTRUCTIONS OF HES, INC. ALL RIGHTS TO DESIGN AND INVENTIONS ARE RESERVED BY HES, INC. POSSESSION OF THE DOCUMENT IS ACCEPTED SUBJECT TO THE FOREGOING.
© HES, INC. 2012

UNLESS OTHERWISE SPECIFIED
DIMENSIONS ARE IN INCHES
TOLERANCES ARE:
FRACTIONAL ±1/32
ANGLES ±1°
.XX ±.01
.XXX ±.005

DO NOT SCALE DRAWING
INTERPRET PER ASME Y14.5M-2009

FAMILY NAME: