

## **Certification Exhibit**

**FCC ID: VC3-IC0020  
IC: 7160A-IC0020**

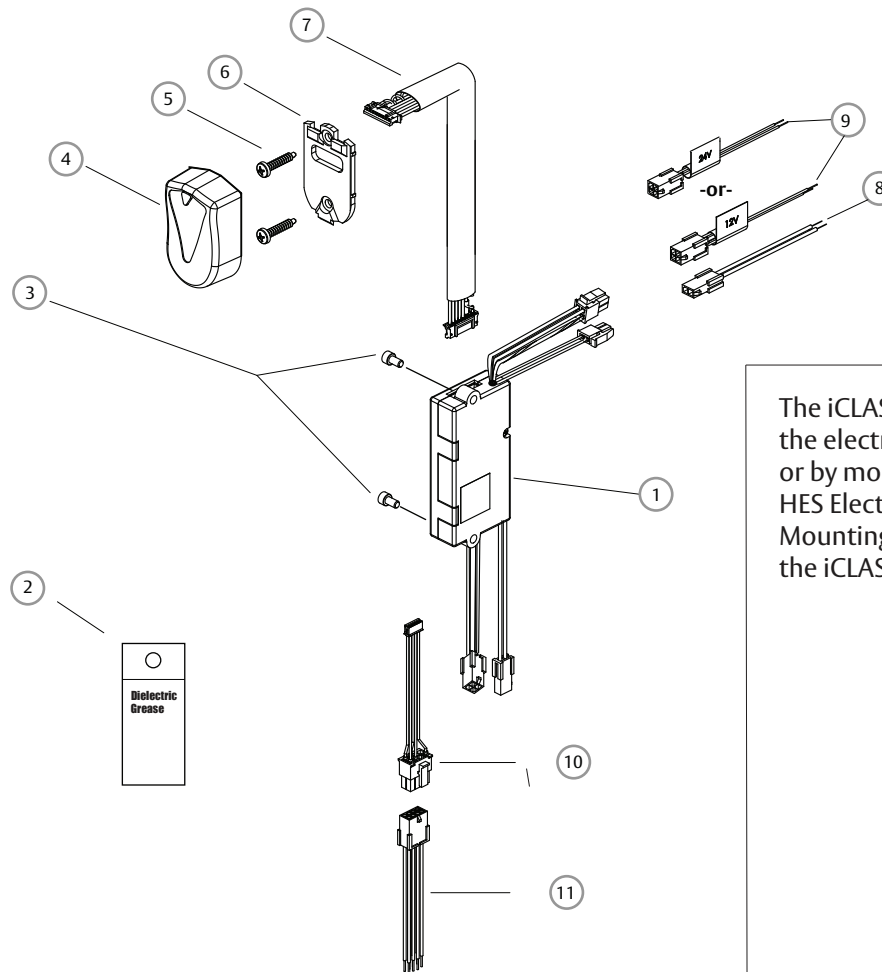
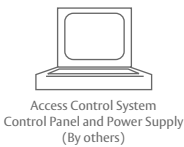
**FCC Rule Part: 15.225  
IC Radio Standards Specification: RSS-210**

**ACS Report Number: 10-0242.W06.22.A**

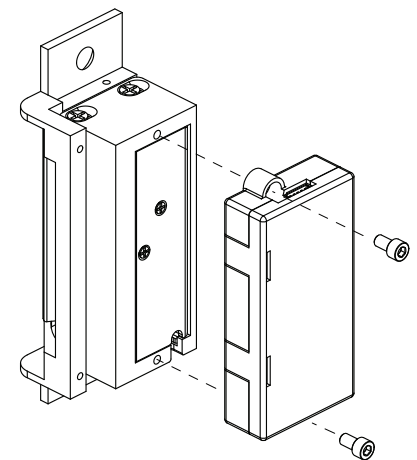
**Manufacturer: Hanchett Entry Systems, Inc  
Model: IC0020**

## **Manual**

- ① iCLASS Module
- ② Dielectric Grease (for humid applications)
- ③ #6-32 Module Mounting Screws (for optional strike mount)
- ④ Reader/Antenna Body
- ⑤ #6-32 Reader/Antenna Screws
- ⑥ Reader/Antenna Mounting Plate
- ⑦ 18" Cable (connecting reader/antenna and strike)
- ⑧ 2 pin DPS & LBM Pigtail Connector
- ⑨ 4 pin 12V Strike Power Pigtail  
4 pin 24V Strike Power Pigtail
- ⑩ Data Connector (connects to iCLASS Module)
- ⑪ 8 pin Connector (Data Module) iClass Pigtail



The iCLASS Module can either be supported by the electrical connection to the Electric Strike, or by mounting it directly to the back of several HES Electric Strikes using the #6-32 Module Mounting Screws. Do not attempt to support the iCLASS Module with the 18" Antenna Cable.



### Wiring Diagram

#### 8 Pin Connector (Data Module)

Red	(+) Board Power
Black	(-) Board Power
Green	Data 0
White	Data 1
Yellow	LED/Buzzer
Blue	Not Used
Orange	Not Used
Brown	Not Used

#### 2 pin Connector (Strike Module)

Tan	Common
Pink	Door Closed and Latch Engaged

#### 2 Pin Connector (Door Position Switch)

Wire plugs into Hybrid Electric Strike

#### 4 Pin Connector (12V Strike Power)

Red	(12VDC +)	Strike Power
Black	(-)	Strike Power

OR

#### 4 Pin Connector (24V Strike Power)

Violet	(24VDC +)	Strike Power
Black	(-)	Strike Power

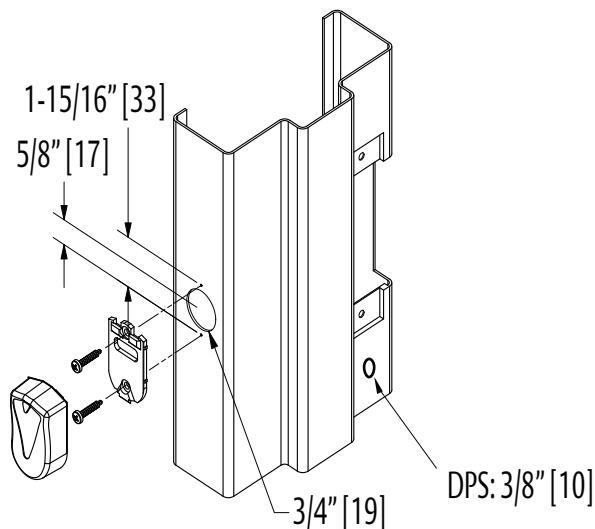
# Installation Directions

IC0020: iClass Module

2

## Prepare Frame and Strike

1. Prepare door jamb for the Electric Strike per the appropriate template provided with the electric strike.
2. Drill a 3/4" diameter hole for Reader/Antenna install per the image below. The Reader/Antenna may be positioned as desired, within the limits of the 18" cable connected to the iCLASS Module.



### Reader/Antenna

3. The iCLASS Module can be mounted directly to the back of the several HES Electric Strikes, or supported in the frame by its electrical connection to the Electric Strike. Do not attempt to support the iCLASS Module with the 18" Antenna Cable. To attach the iCLASS Module to the Electric Strike, see page 1.
4. Drill a 3/8" hole for the door position switch (DPS) as required.

Wire Gauge Diagram

Distance In ft, Round Trip	12VDC	24VDC
100' or less	24 Gauge	24 Gauge
100' to 200'	22 Gauge	24 Gauge
200' to 300'	22 Gauge	24 Gauge
300' to 400'	22 Gauge	22 Gauge
400' to 500'	20 Gauge	22 Gauge
500' to 600'	20 Gauge	22 Gauge
600' to 700'	18 Gauge	20 Gauge

## Connect Components and Wiring

5. Select the appropriate 4 Pin Strike Power Pigtail that matches system power. For 12V AC/DC or 16V AC, the pigtail marked "12 VDC" should be used. For 24V AC/DC, the pigtail marked "24 VDC" should be used.
  6. Verify that the wires running from the control panel are of adequate wire gauge (see Wire Gauge Diagram below). Connect the wire leads of the three pigtails provided to the control panel wiring based on the wiring diagram on page 2 and the appropriate termination at the control panel.
  7. Mount the door position switch (DPS) into the frame. Route the 10" cable back to the Electric Strike and connect it to the 2 pin connector coming out of the Electric Strike. It does not matter which 2 pin connector is used. The LBM & DPS are wired in series--a 'closed' electrical circuit depicts a closed door and extended latchbolt into the hybrid Electric Strike.
  8. Secure the Reader/Antenna Mounting Plate to the frame using the #6-32 screws provided. Connect the 18" cable to the Reader/Antenna, snap the Reader/Antenna to the Reader/Antenna Mounting Plate and pull the 18" cable through to the iCLASS Module.
  9. Attach the 8, 4 and 2 pin connectors at the Electric Strike to the equivalent pigtail connectors routed from the control panel. Dielectric grease should be applied to the pigtail electrical terminals if used in a humid environment.
  10. Install the Electric Strike unit in jamb cutout.
- ### Testing and Operation
11. When power is supplied, the LED will turn red, while the beeper beeps 3 times. This sequence indicated the micro-controller is operating properly.
  1. Present an iCLASS ID card to the Reader/Antenna. The LED will turn green, while the beeper beeps once. This indicates that the card was read successfully. Simultaneously, the keeper will click open. This indicates that communication between the control panel and the Electric Strike is operational.

**Warning** Changes or modification to this device not expressly approved by HES, Inc., could void the user's authority to operate the equipment.

NOTE: This equipment has been tested and found to comply with the limits for a class [B] digital device, pursuant to Part15 of the FCC Rules. These limits are designed to provide reasonable protection against harmful interference in a residential installation. This equipment generates, uses, and can radiate radio frequency energy and, if not installed and used in accordance with the instructions, may cause harmful interference to radio communications. However, there is no guarantee that interference will not occur in a particular installation. If this equipment does cause harmful interference to radio or television reception, which can be determined by turning the equipment off and on, the user is encouraged to try to correct the interference by one or more of the following measures:

- Reorient or relocate the receiving antenna.
- Increase the separation between the equipment and receiver.
- Connect the equipment into an outlet on a circuit different from that to which the receiver is connected.
- Consult the dealer or an experienced radio/TV technician for help

This class [B] digital apparatus meets all requirements of the Canadian Interference Causing Equipment Regulations.

Operation is subject to the following two conditions: (1) this device may not cause harmful interference, and (2) this device must accept any interference received, including interference that may cause undesired operation. Cet appareillage numérique de la classe [B] répond à toutes les exigences de l'interférence canadienne causant des règlements d'équipement. L'opération est sujette aux deux conditions suivantes: (1) ce dispositif peut ne pas causer l'interférence nocive, et (2) ce dispositif doit accepter n'importe quelle interférence reçue, y compris l'interférence qui peut causer l'opération peu désirée.