

Elite **SCREENS**

Ez-Electric Screen

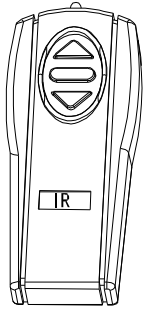
Elite Home series

Type C Ver.1.2

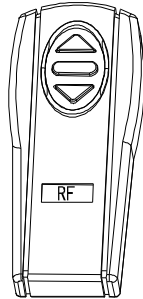
Users Guide



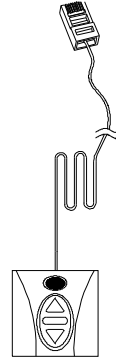
Accessory for Home series



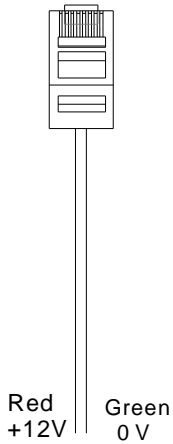
① IR



② RF



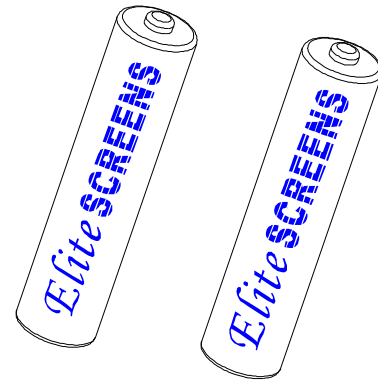
③ Wall box



④ 12V trigger cable

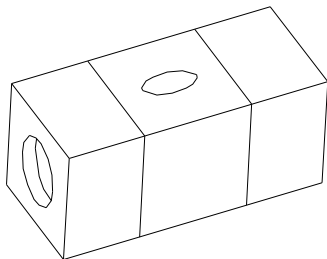


⑤ Eye receiver



⑥ Battery

Please always point to the eye receiver when using the IR remote.



⑦ Bubble level

Important Safety and Warning Precautions

1. Be sure to read this manual before use and follow the procedures specified:

- ☆ Put this manual at a safe place nearest to the device for reference.
- ☆ Do not use the accessories not recommended by the manufacture to avoid any damage.
- ☆ Handle the device carefully during transportation to avoid impact.
- ☆ Do not put the device at uneven or inclined places.
- ☆ Do not put any heavy object on the power cord; fix the power cord properly to avoid Tripping over of passers-by.
- ☆ Do not overload the power cord to prevent electrical shock or fire.
- ☆ Guard any liquid or foreign object against entering the device, to avoid electrical shock or fire due to loose contact or short circuit.

2. If any accessory needs to be replaced, be careful to avoid short circuit.

3 There are no user serviceable accessories in the device. Nobody except authorized technicians can open the device to avoid electrical shock. To prevent the risk of electrical shock or fire, guard against moisture and rain shower.

Make sure that the voltage connected to the product is correct at any time. The rating label on the product indicates the rated voltage.

To protect the environment, send the product to the environment authority for disposal when it cannot serve any longer.

Do not handle the power plug when your hands are wet or your feet are in contact with water.

4. Do not use the device at the following circumstances:

- 1) Disconnect the power cord under the condition of heavy storm, wind, rain, thunder or lightening.
- 2) Avoid direct sunshine, rain shower or moisture.
- 3) Keep away from fire sources and high temperature to prevent the device from being overheated.
- 4) Cut off the power supply first before transportation or maintenance.

Warning

Changes or modifications to this unit not expressly approved by the party responsible for compliance could void the user's authority to operate the equipment.

NOTE:

This equipment has been tested and found to comply with the limits for a Class B digital device, pursuant to Part 15 of the FCC Rules. These limits are designed to provide reasonable protection against harmful interference in a residential installation. This equipment generates, uses and can radiate radio frequency energy and, if not installed and used in accordance with the instructions, may cause harmful interference to radio communications.

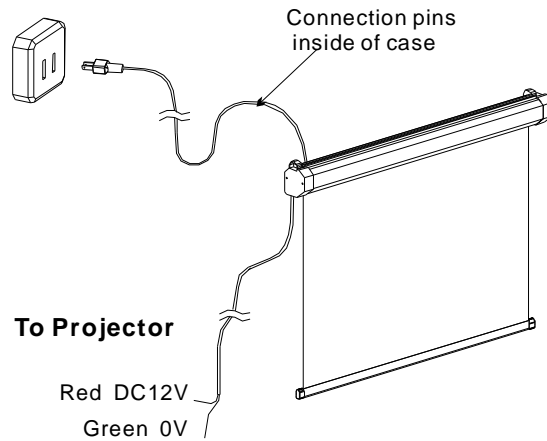
However, there is no guarantee that interference will not occur in a particular installation. If this equipment does cause harmful interference to radio or television reception, which can be determined by turning the equipment off and on, the user is encouraged to try to correct the interference by one or more of the following measures:

- ! Reorient or relocate the receiving antenna.
- ! Increase the separation between the equipment and receiver.
- ! Connect the equipment into an outlet on a circuit different from that to which the receiver is connected.
- ! Consult the dealer or an experienced radio/TV technician for help.

Control System:

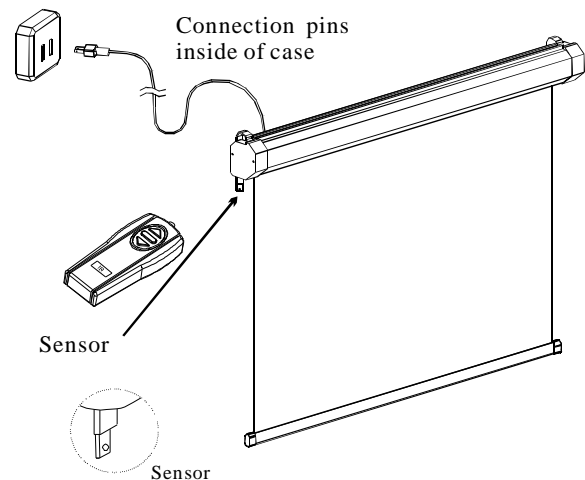
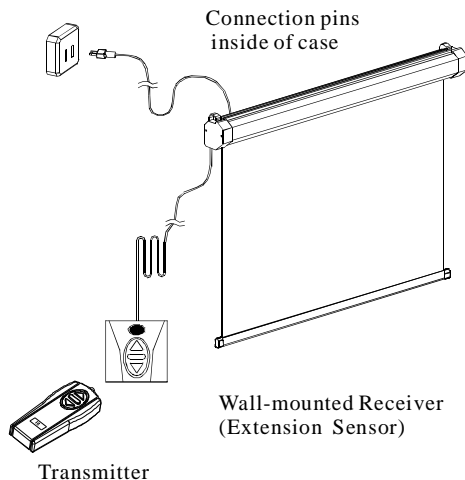
1. 12V Trigger: 12V trigger for your new Elite

Cinetension-----allows your screen to synchronize its drop and rise with the projector's power cycle. The scree drops when the projector powers up, and retracts when the projector powers down.

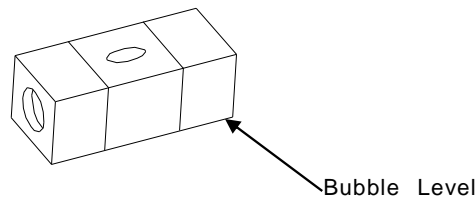


Video Projection Interface

2. IR (Infrared) Wall Box Kit and Eye Receiver: The Wall Box Kit contains an IR receiver and enables the consumer to use either the IR remote or hardwire controls to operate the screen's drop/rise capabilities. IR eye protrudes from the bottom of the casing to present a low profile line-of-sight control option for your IR remote. It is a low-visibility alternative to using the wall box kit and its ability to protrude from the bottom of the screen allows line-of-sight control even in a recessed ceiling installation.



3. Bubble Level: Included with the installation package is a small bubble level that can be useful in determining if the screen is perfectly level when installing.



NOTE: ① Please use the Down sign side as the bottom.

②The Bubble should be in the middle position to determine that it is level.

IMPORTANT SAFETY INSTRUCTIONS

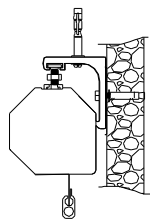
Please read this guide prior to installation.

- Make sure the current rating is equal to that of the appliance rating when an extension cord is used.
- Do not use any accessories not provided by the manufacturer with this screen. We will not be responsible for any risks of fire, electric shock, or injuries resulting from the misuse of this product with accessories not designed for it.
- Make sure the screen is mounted in a horizontal level. We suggest consulting with a professional if you are unsure on how to perform a proper installation.

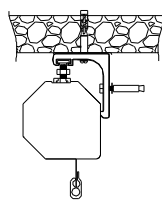
INSTALLATION

MOUNTING INSTALLATION

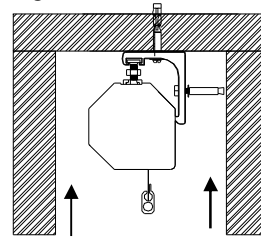
Wall Mounted



Ceiling Mounted



Ceiling Recessed Mounted

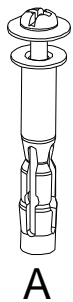


*** Allow 2 of spacing between the front and back of the screen**

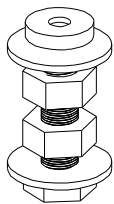
- Masonry Anchors are used on concrete/masonry wall/ceilings; Plastic drywall anchors are included for drywall mounting
- Wood screws are to be used for wooden wall/ceiling studs on screen sizes less than or equal to 120 inches (diagonal). Masonry anchors should be used for wall/ceiling installations of screen sizes greater than 120 inches (diagonal).
- Install the Aluminum Extruded Hanger Set onto the slide channel and move to the desired position Before locking it by tightening the connecting bolt.

MOUNTING ACCESSORIES

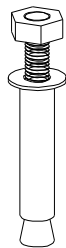
Upon assembly the bracket will slide into the casing rails for mounting.



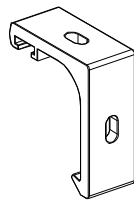
A



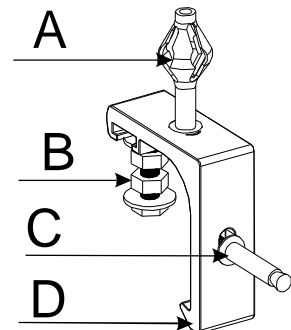
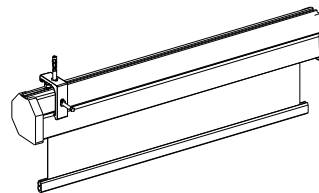
B



C



D



Warning: Standard screws x 2 for each type
These are standard accessories included with the ceiling/wall brackets. Models may vary and anchors will not support all models.