

Internal Photograph (Model: ALVBS/ALV2S)

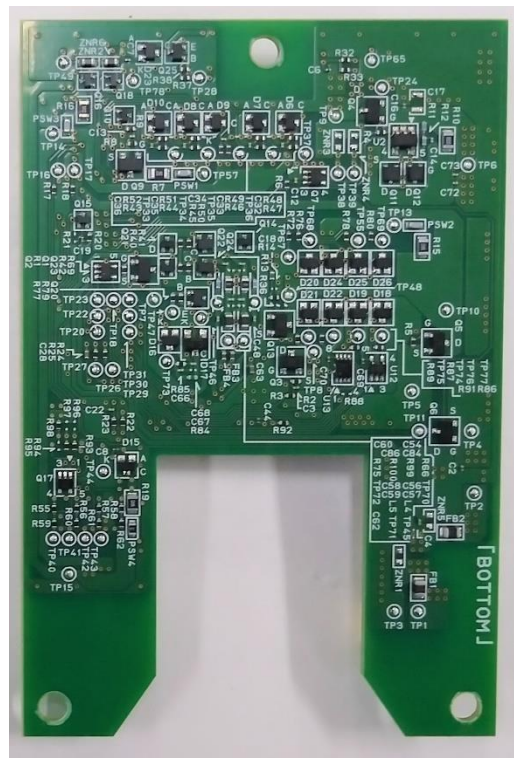
1.ALVBS (NFC and BLE type)

1.1. Control board

TOP View



Bottom View



Side View



1.2. Antenna board

Top View



Bottom View



Side View



1.3. Sub board

Top View



Bottom View



Side View

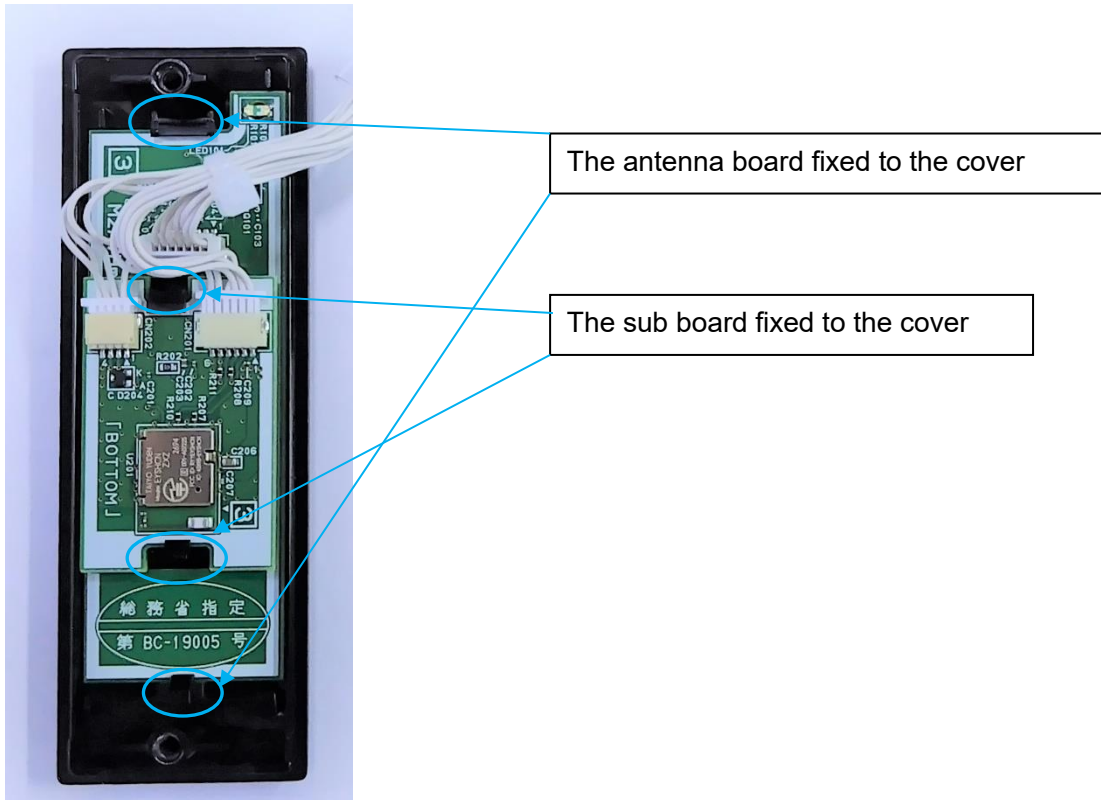


Note : Model ALVBS contains one Bluetooth Low Energy module(model EYHSCN, manufacturer TAIYO YUDEN CO.,LTD.). The BLE module was already tested and certified as per FCC and ISRD rules (FCC ID: RYYEYSHCN, IC: 4389B-EYSHCN).

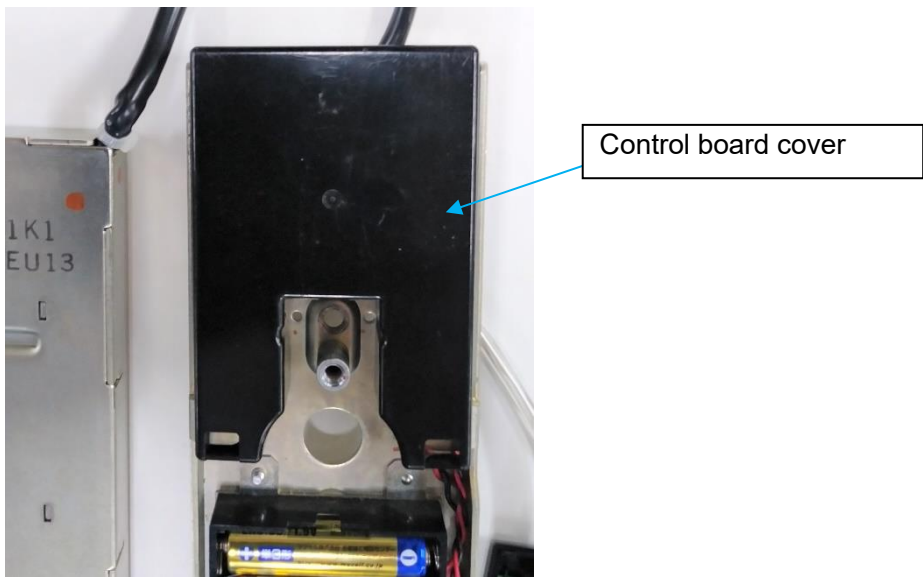
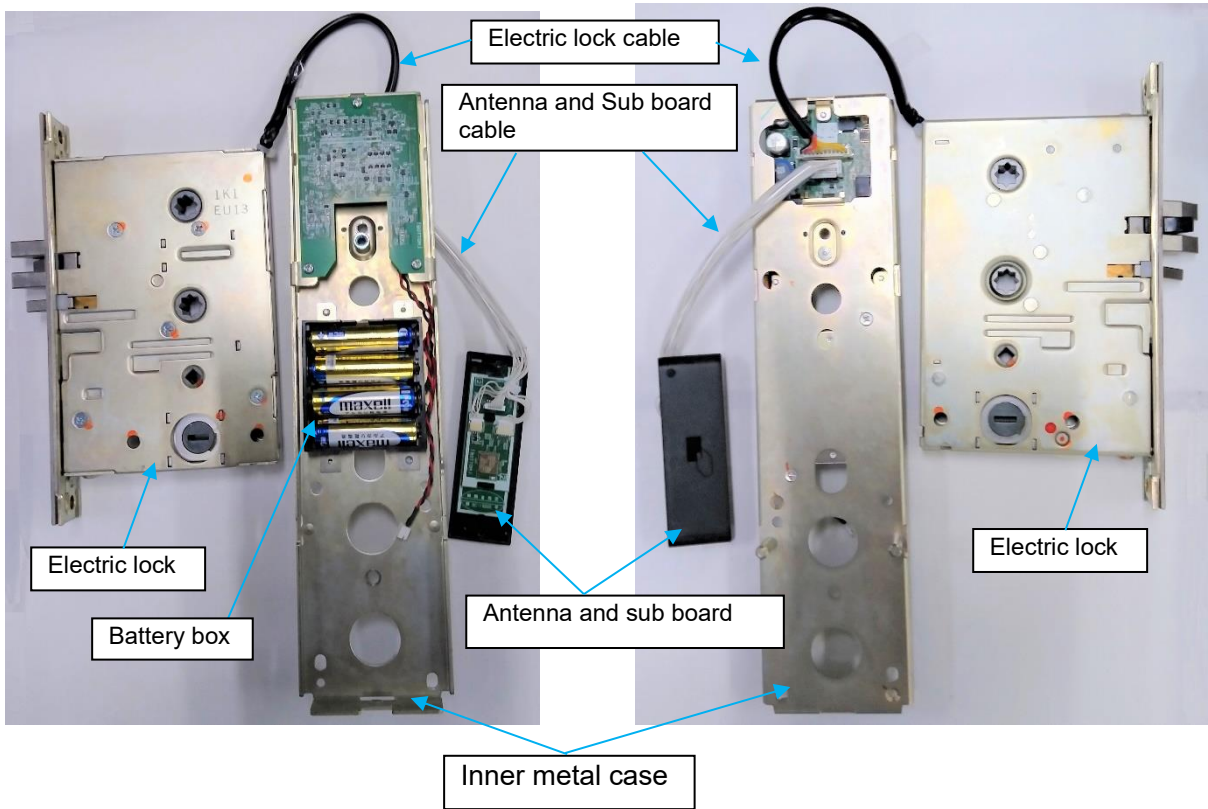
1.4. Cable connection status



1.5. Fixed position of the antenna and sub board



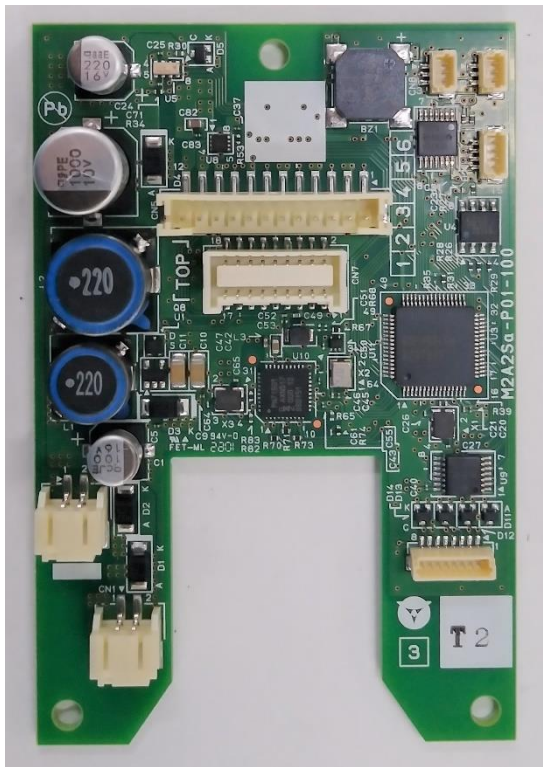
1.6. Attaches to the inner metal case and connects to the electric lock



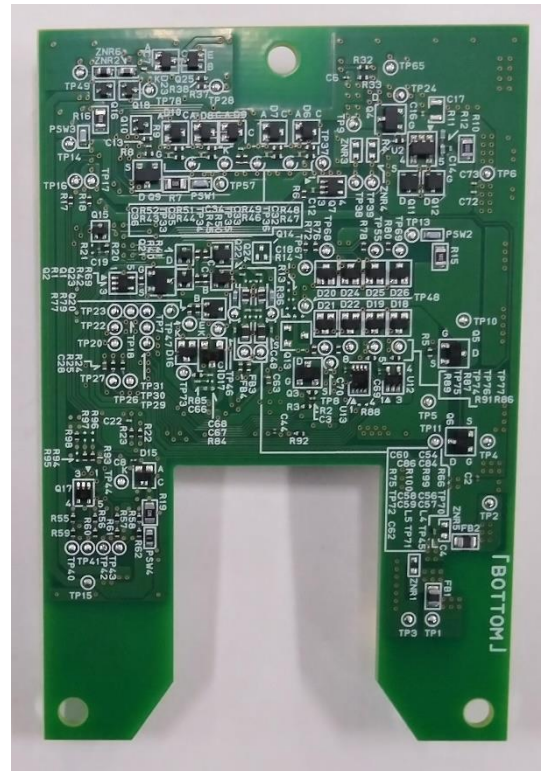
2.ALV2S (NFC type)

2.1. Control board

TOP View



Bottom View



Side View



2.2. Antenna board

Top View



Bottom View

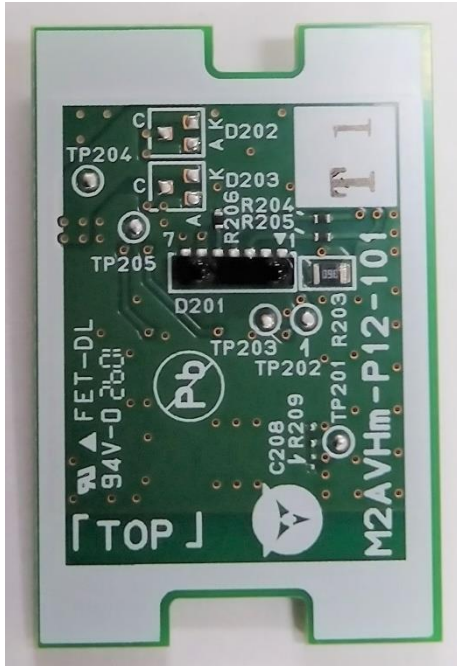


Side View



2.3. Sub board

Top View



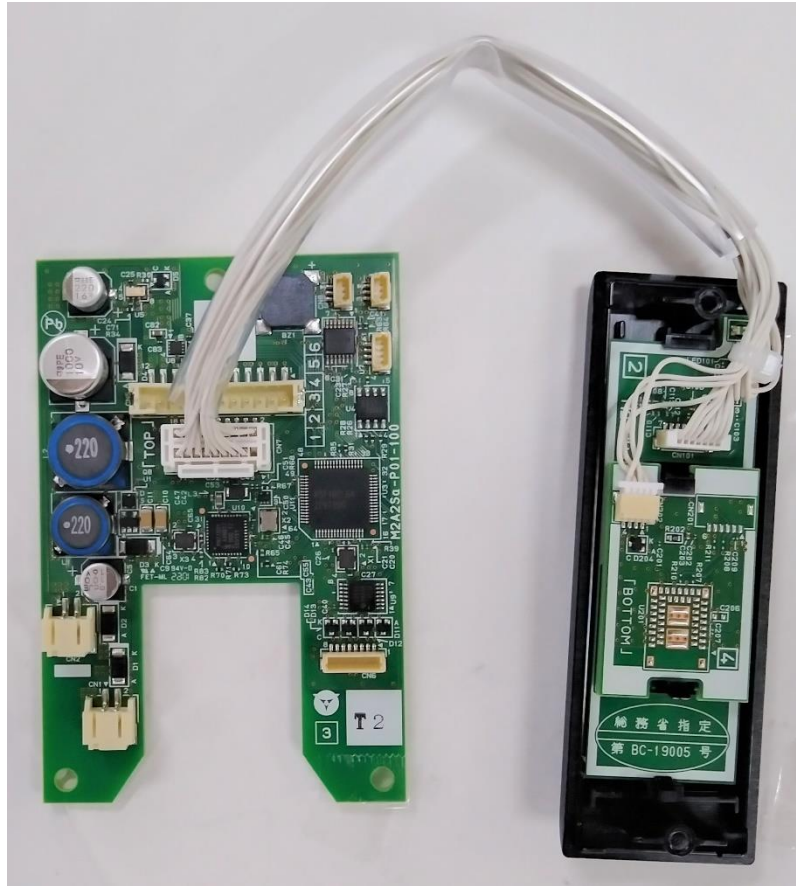
Bottom View



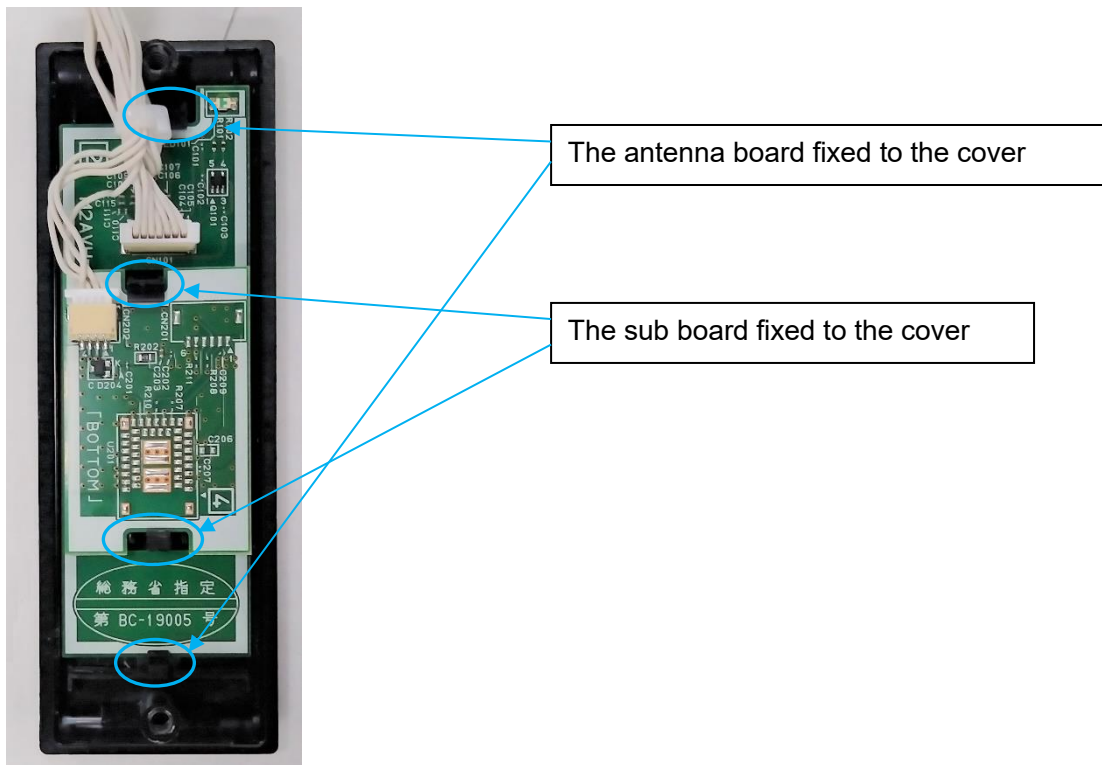
Side View



2.4. Cable connection status



2.5. Fixed position of the antenna and sub board



2.6. Attaches to the inner metal case and connects to the electric lock

