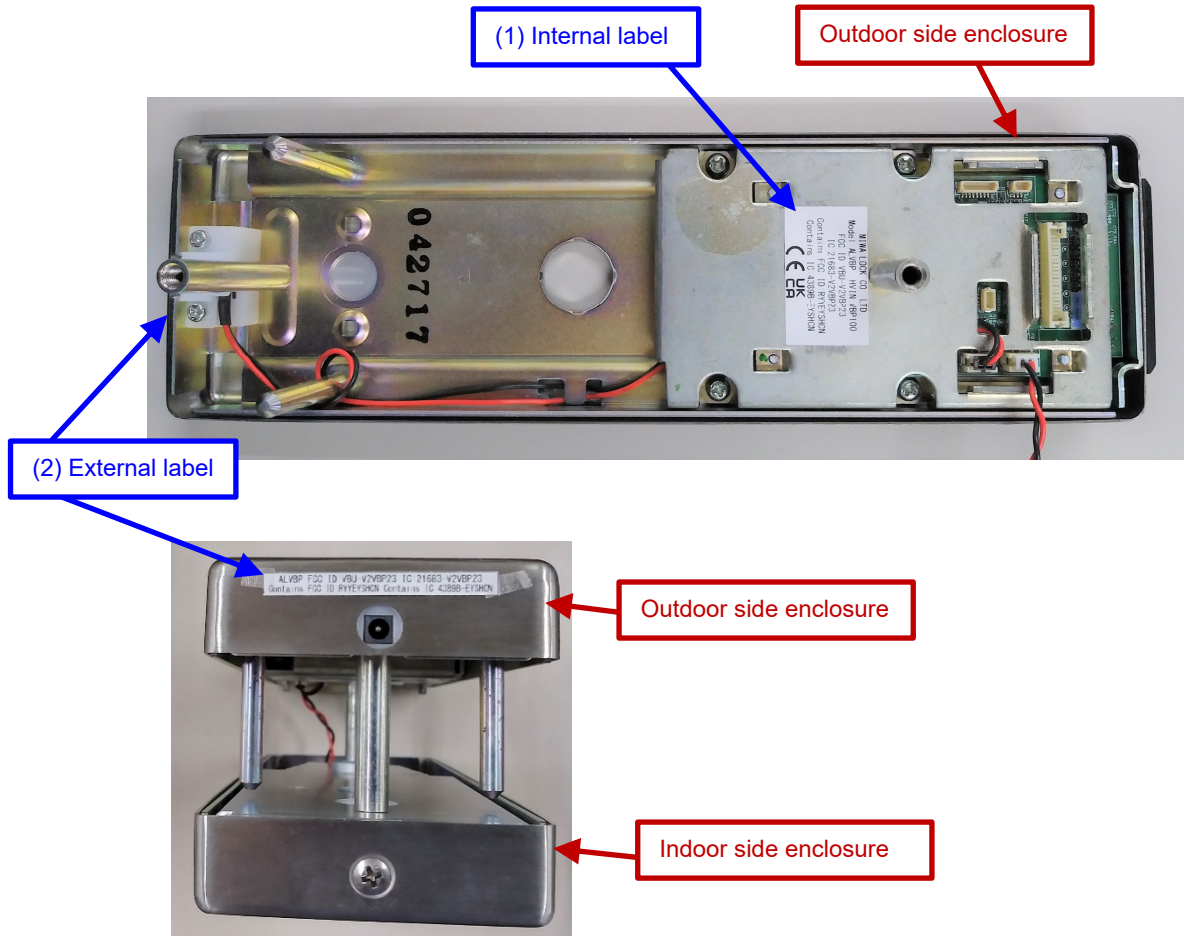
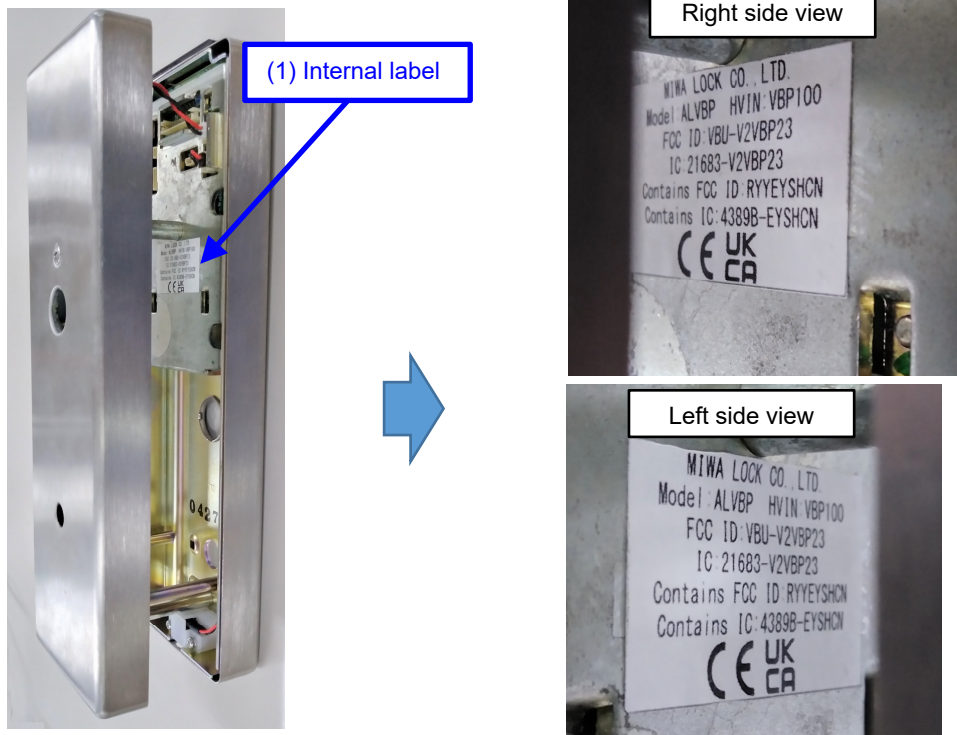


ALVBP / ALV2P Label information

1. Label location



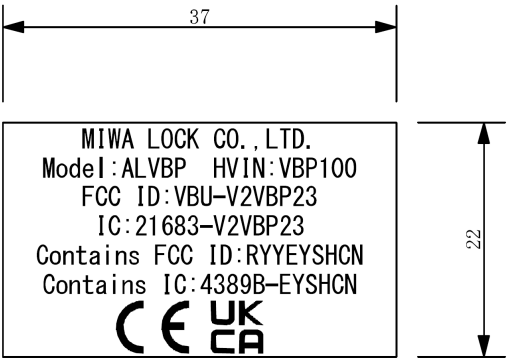
2. Internal label after assembly



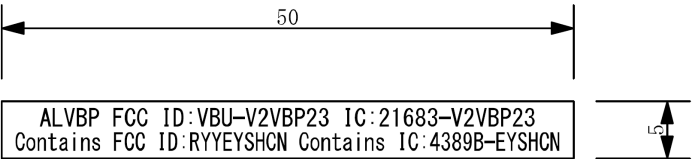
3.Label design

Model: ALVBP (NFC and BLE Type)

(1) Internal label



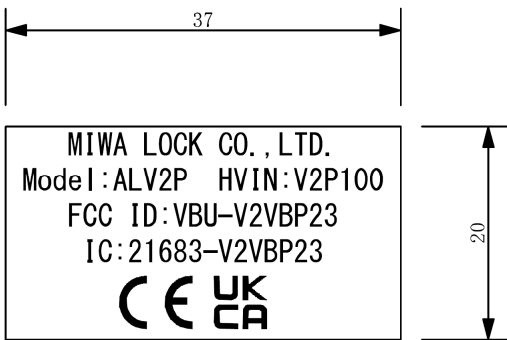
(2) External label



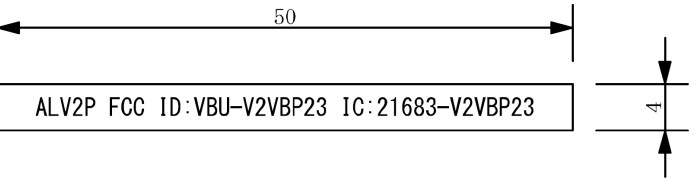
Unit : mm

Model: ALV2P (NFC Type)

(1) Internal label



(2) External label



Unit : mm

4.Durability of labels

The product life is specified as 7 years.

The adhesive surface of the label uses a strong acrylic pressure sensitive adhesive and cannot be easily removed.

Lamination protects the surface and prevents fading of printed characters.

Durability is not a problem because people do not touch it during normal operation.

The label consists of 4 layers.

Laminate film (PET 25)	1st layer
Laminating adhesive	2nd layer
Label paper (PET50)	3rd layer
Strong acrylic adhesive	4th layer