

# Internal Photograph

Model:V3HTMA / V3HTM / ALV3MA / ALV3M

## 1. Model:V3HTMA

### 1.1. Control board

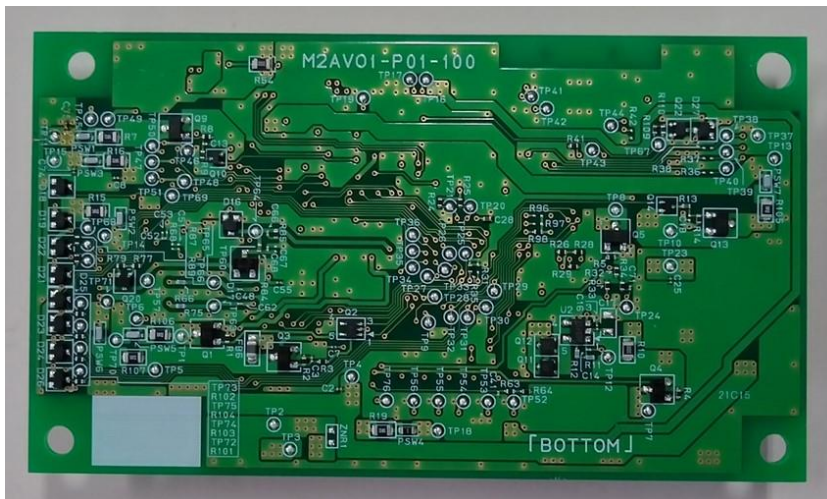
TOP View



Side View

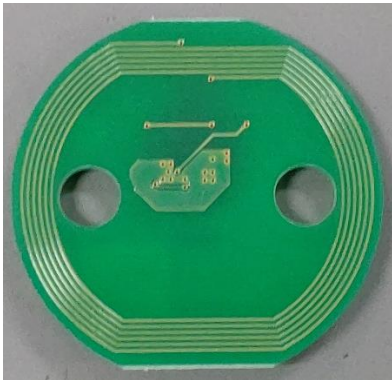


Bottom View



## 1.2. Antenna board

TOP View



Side View

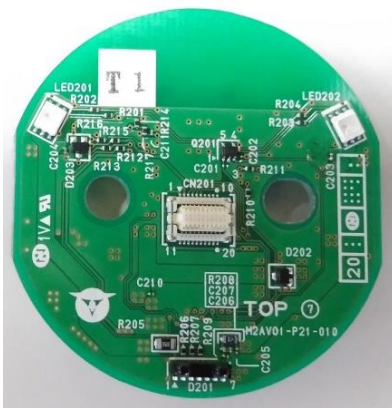


Bottom View



## 1.3. BLE board

TOP View



Side View

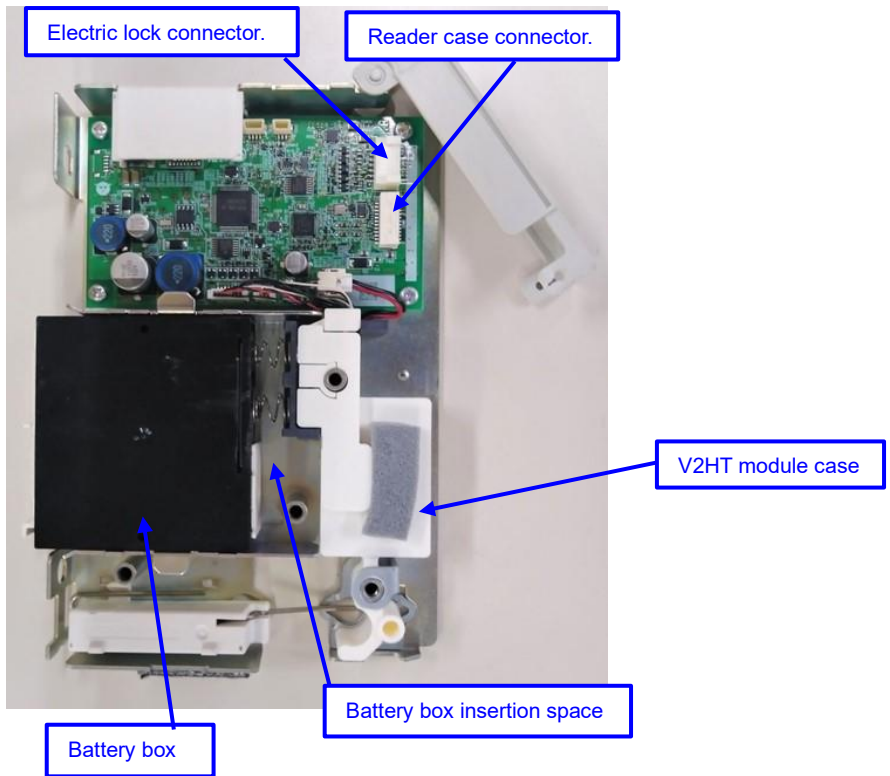


Bottom View



#### 1.4. Control case

Control board fix to case. Connect BLE module (V2HT).



## 1.5. Reader case

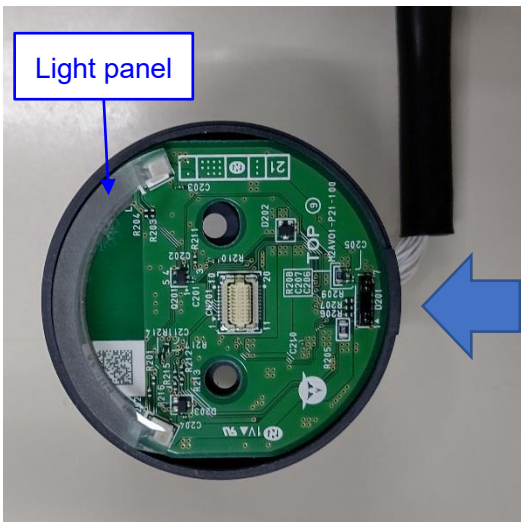


### 1.5.1. Reader case assembly(Antenna board and BLE board)

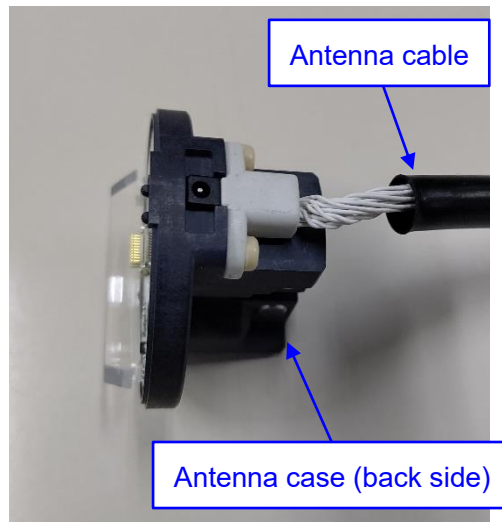
Light panel attach to BLE board.

Antenna cable connects for BLE board through Antenna case (back side).

TOP View



Arrow View



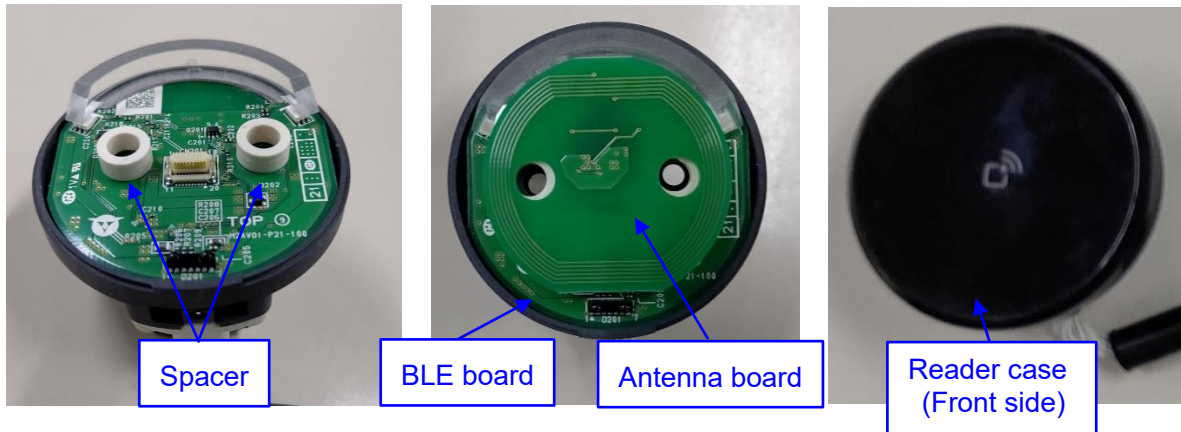
Internal View

Antenna cable connection



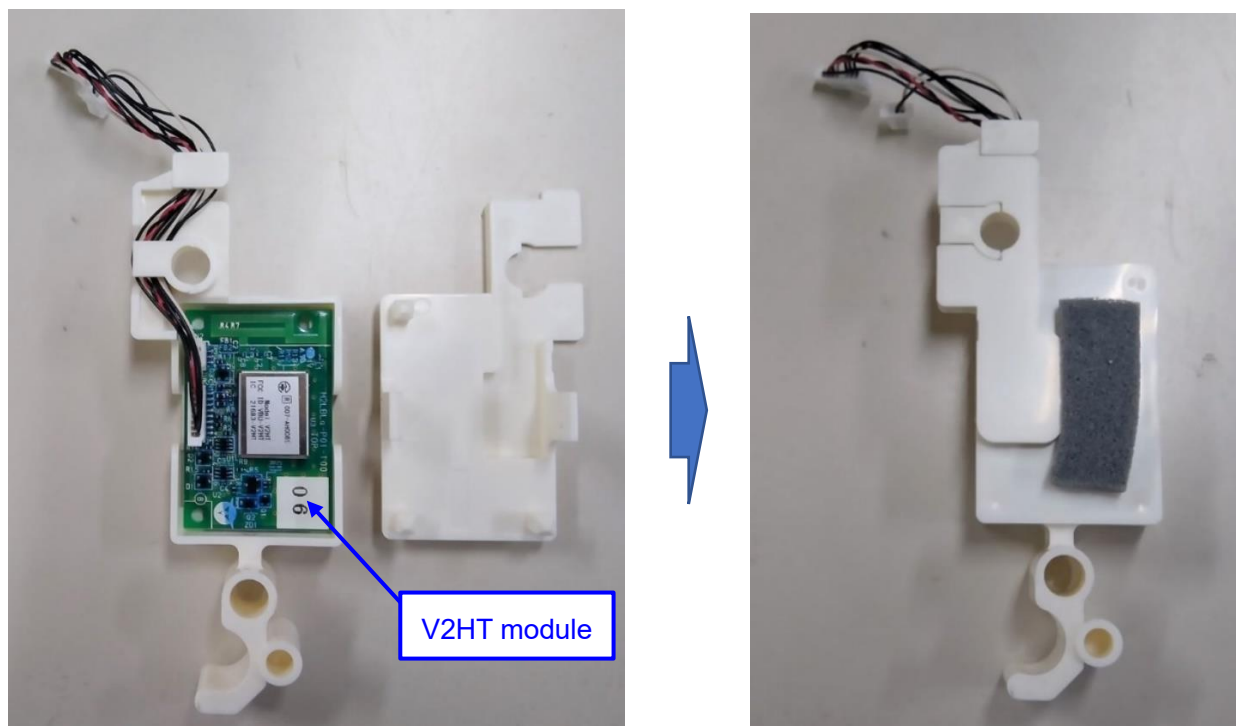
Spacer put on BLE board, and antenna board connect for BLE board.  
Antenna case (front side) attaches of it.

TOP View



### 1.6. V2HT Module(assembly)

The V2HT module is housed in a dedicated case.



## 1.7. Battery box

Dedicated battery box with 4 AA size batteries.



## 1.8. Electric lock

Connect the electric lock model AL5HA.



## 2. Model:V3HTM

### 2.1. Control board

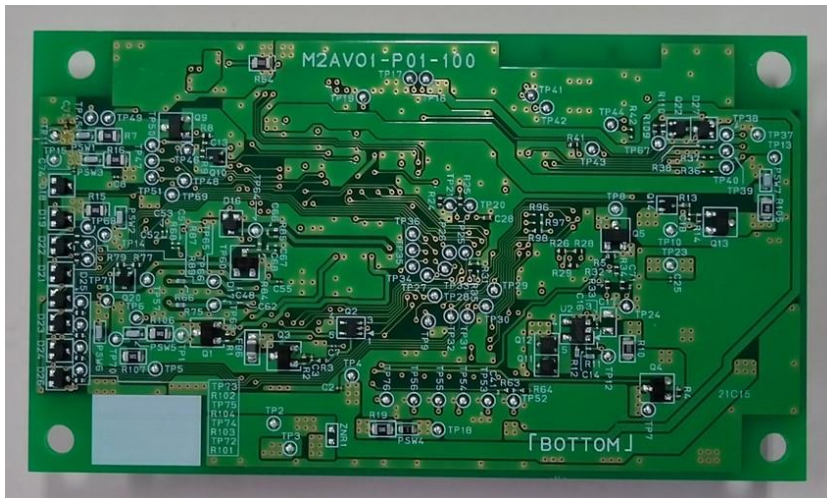
TOP View



Side View

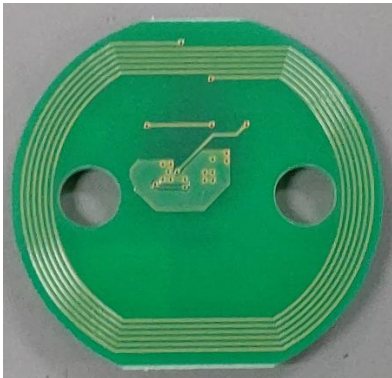


Bottom View



## 2.2. Antenna board

TOP View



Side View



Bottom View



## 2.3. BLE board

TOP View



Side View



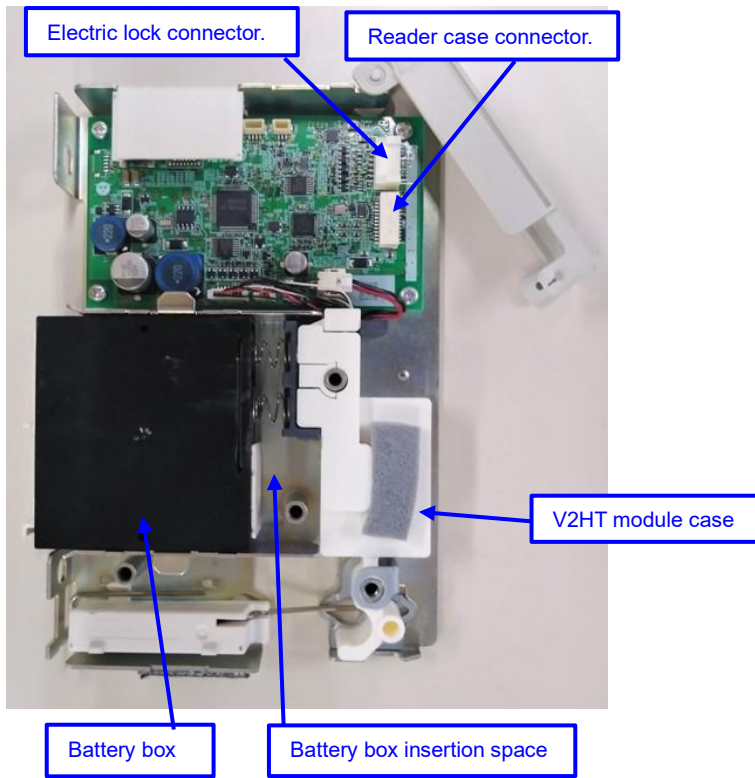
Bottom View





## 2.4. Control case

Control board fix to case. Connect BLE module (V2HT).



## 2.5. Reader case



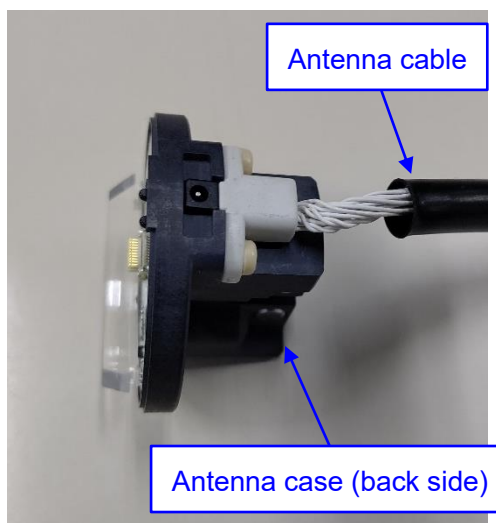
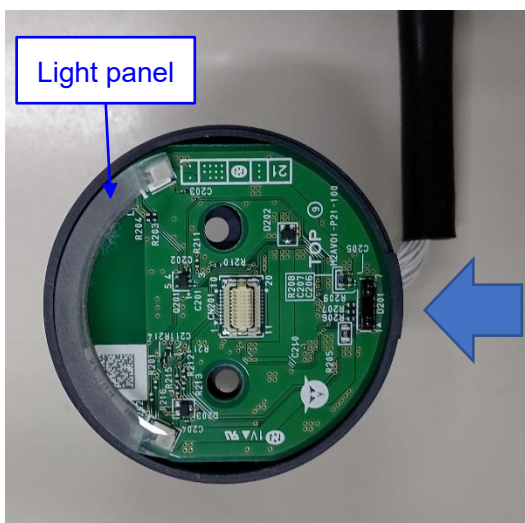
### 2.5.1. Reader case assembly(Antenna board and BLE board)

Light panel attach to BLE board.

Antenna cable connects for BLE board through Antenna case (back side).

TOP View

Arrow View



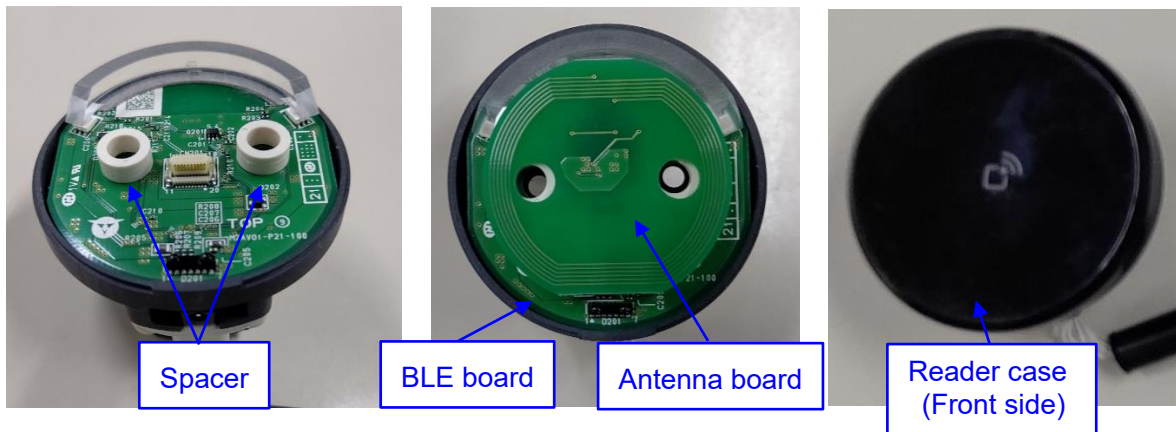
Internal View

Antenna cable connection



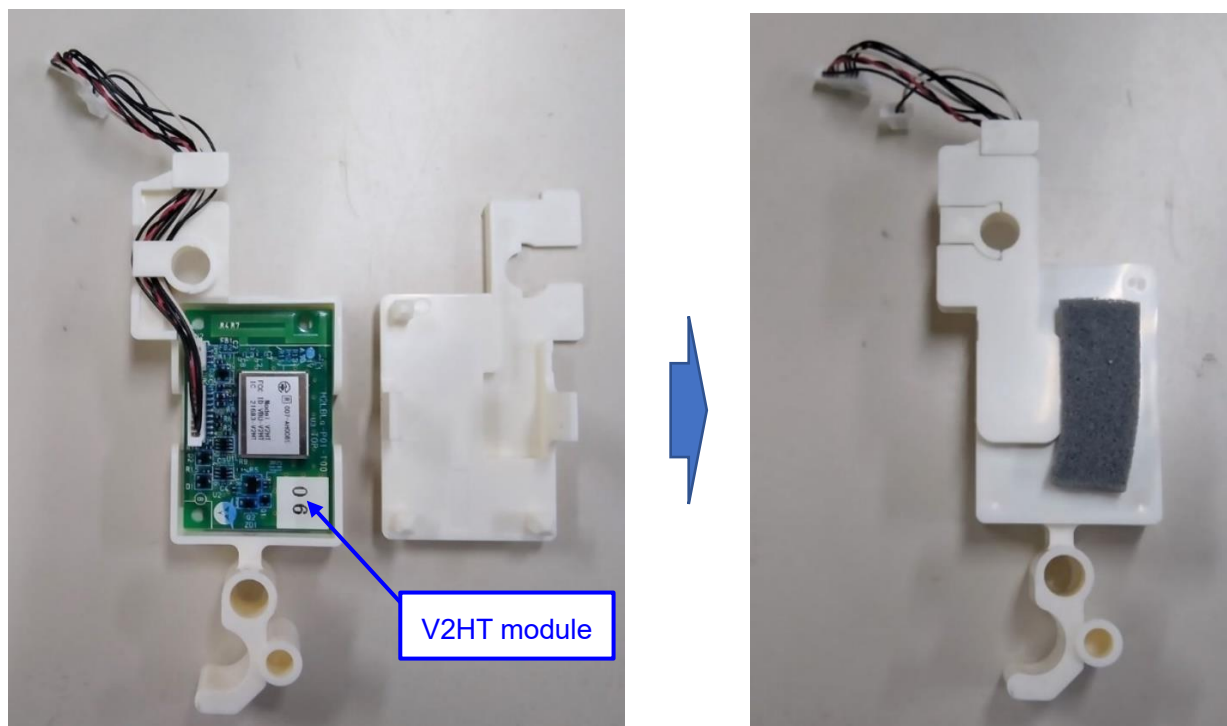
Spacer put on BLE board, and antenna board connect for BLE board.  
Antenna case (front side) attaches of it.

TOP View



## 2.6. V2HT Module(assembly)

The V2HT module is housed in a dedicated case.



## 2.7. Battery box

Dedicated battery box with 4 AA size batteries.



## 2.8. Electric lock

Connect the electric lock model AL6H.



### 3. Model:ALV3MA

#### 3.1. Control board

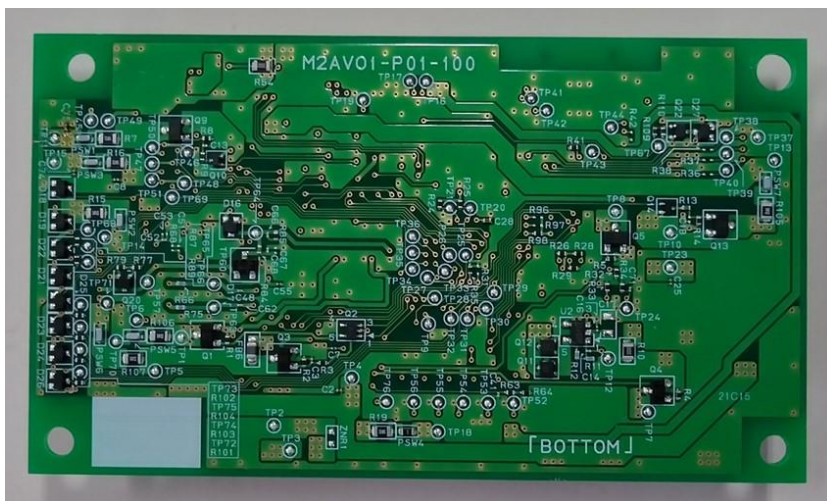
TOP View



Side View

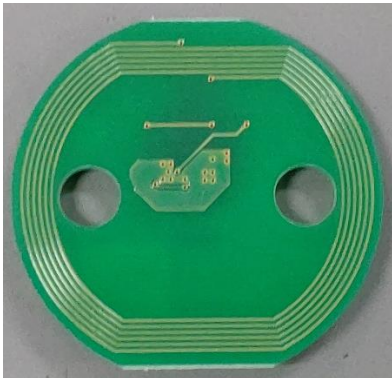


Bottom View



### 3.2. Antenna board

TOP View



Side View



Bottom View



### 3.3. BLE board

TOP View



Side View

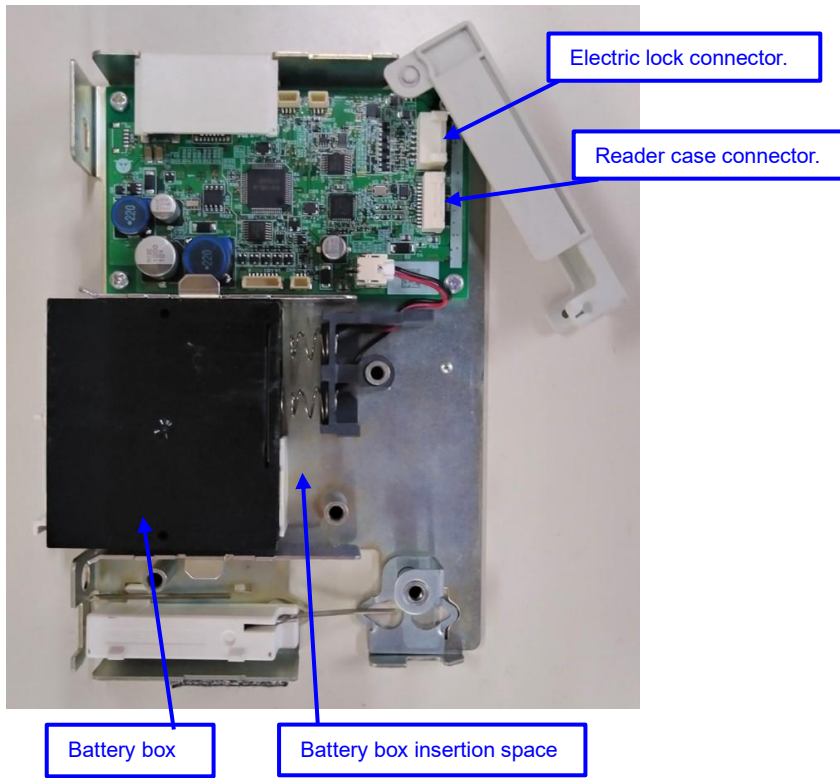


Bottom View



### 3.4. Control case

Control board fix to case. Assemble without V2HT module.



### 3.5. Reader case



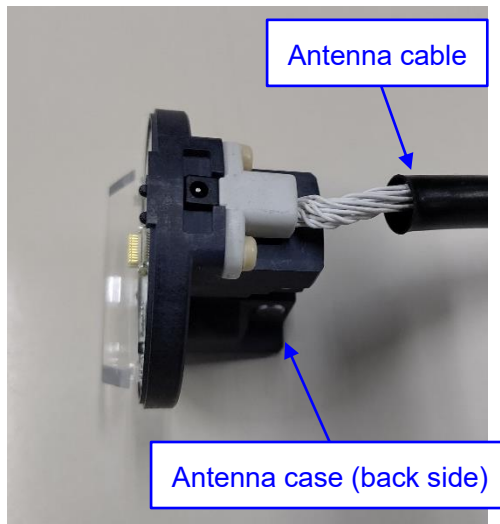
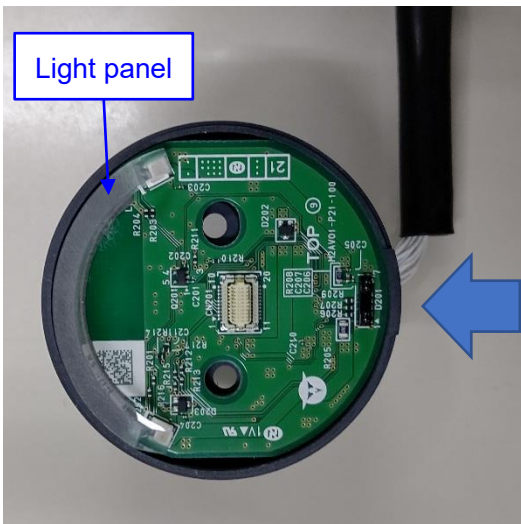
#### 3.5.1. Reader case assembly(Antenna board and BLE board)

Light panel attach to BLE board.

Antenna cable connects for BLE board through Antenna case (back side).

TOP View

Arrow View



Internal View

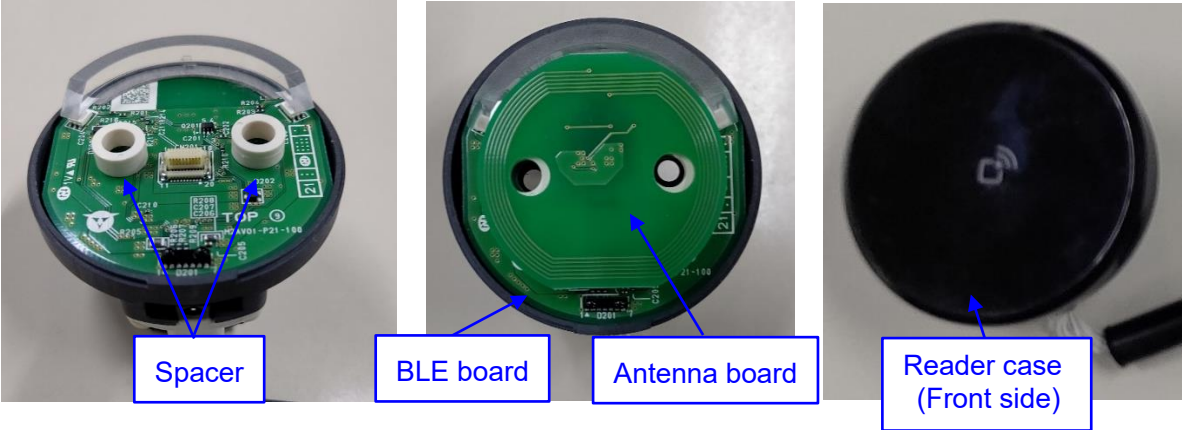
Antenna cable connection





Spacer put on BLE board, and antenna board connect for BLE board.  
Antenna case (front side) attaches of it.

TOP View



### 3.6. Battery box

Dedicated battery box with 4 AA size batteries.



### 3.7. Electric lock

Connect the electric lock model AL5HA.



#### 4. Model:ALV3M

##### 4.1. Control board

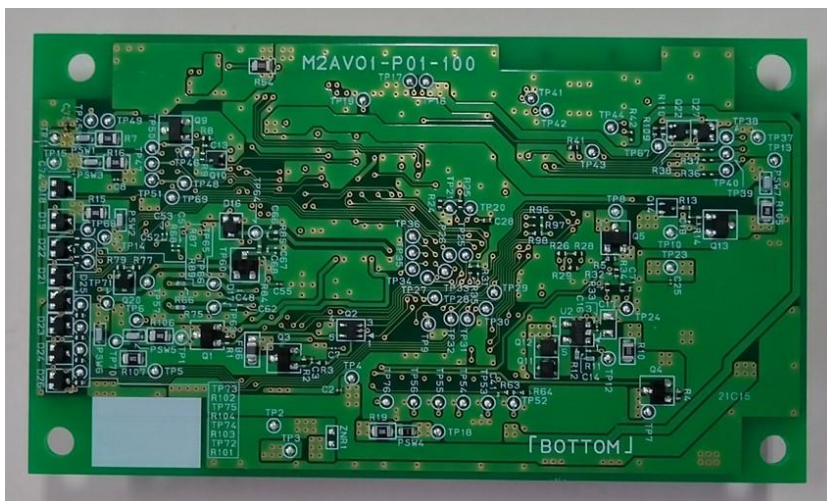
TOP View



Side View

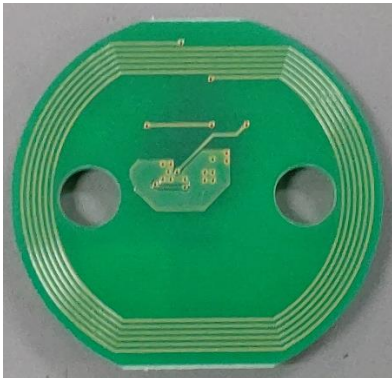


Bottom View



## 4.2. Antenna board

TOP View



Side View



Bottom View



## 4.3. BLE board

TOP View



Side View

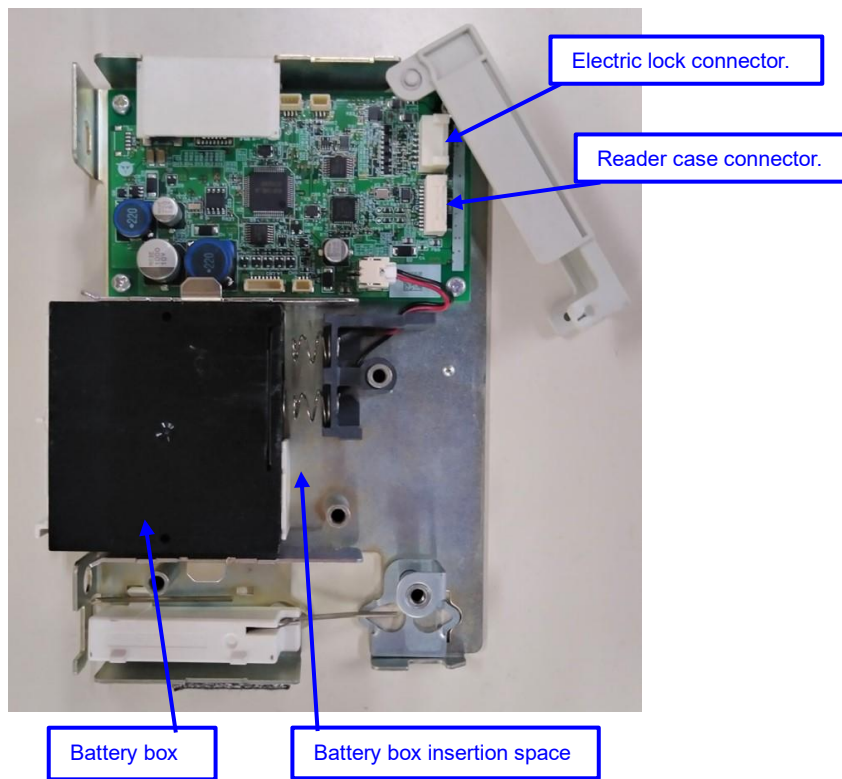


Bottom View



#### 4.4. Control case

Control board fix to case. Assemble without V2HT module.



#### 4.5. Reader case



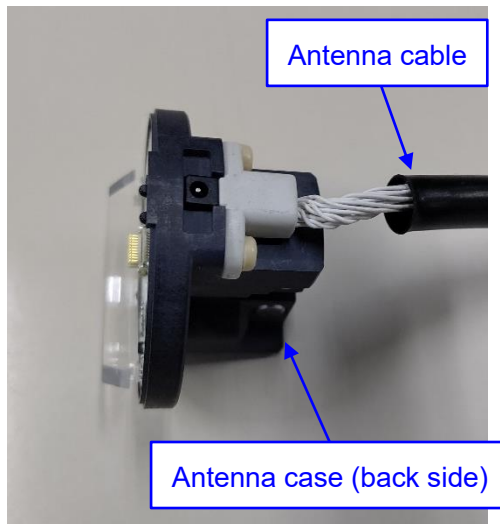
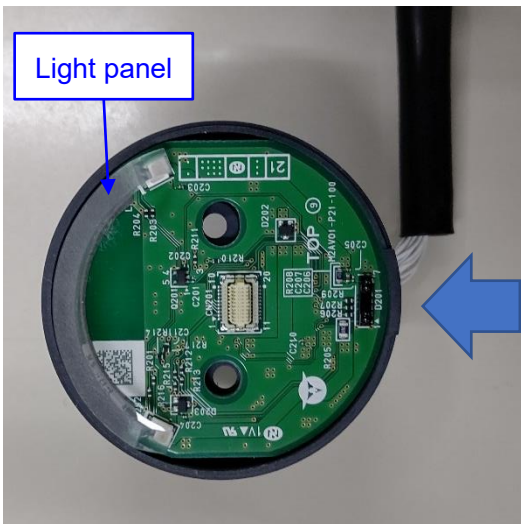
##### 4.5.1. Reader case assembly(Antenna board and BLE board)

Light panel attach to BLE board.

Antenna cable connects for BLE board through Antenna case (back side).

TOP View

Arrow View



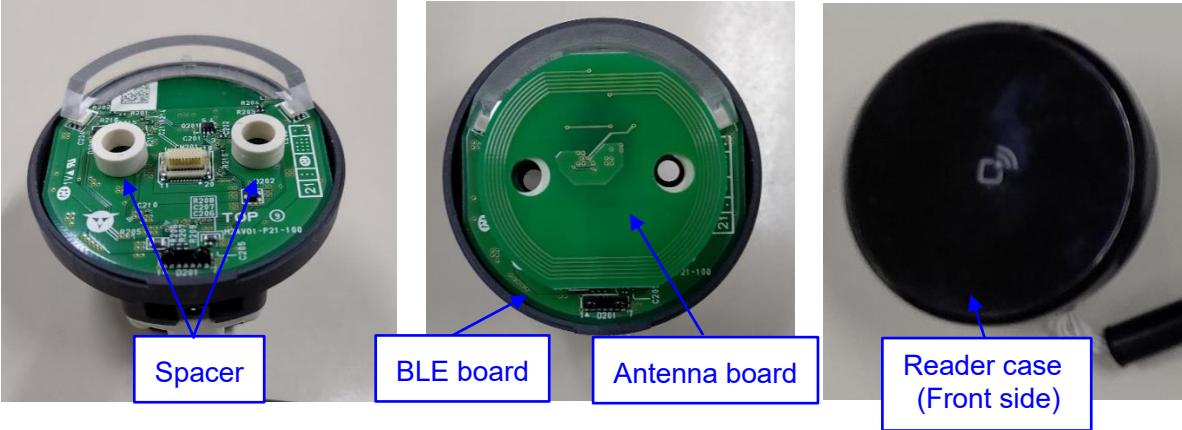
Internal View

Antenna cable connection



Spacer put on BLE board, and antenna board connect for BLE board.  
Antenna case (front side) attaches of it.

TOP View



#### 4.6. Battery box

Dedicated battery box with 4 AA size batteries.



#### 4.7. Electric lock

Connect the electric lock model AL6H.

