

**ELECTROMAGNETIC EMISSIONS COMPLIANCE REPORT
INTENTIONAL RADIATOR CERTIFICATION TO
FCC PART 74 SUBPART H REQUIREMENT**

OF

Wireless Microphone System

MODEL NO.: KOK-193878-01

FCC ID: VBQMIPUOK306

BRAND NAME: N/A

REPORT NO: SZ002070501E2

ISSUE DATE: May. 26, 2007

Prepared for

**Enping Shi Jinmiwang Electronic Co.,Ltd.
No.123,Xingping North Road, Enping City,
Guangdong, China**

Prepared by

Shenzhen Attestation Of Global Compliance Technology Co., Ltd.

d.b.a.

**Shenzhen Attestation Of Global Compliance Technology Co., Ltd.
Room 19D,Block 2,Building 6,Shahe East Road,
Nanshan District, Shenzhen, China
TEL: 86-755-33309974
FAX: 86-755-26008484**

VERIFICATION OF COMPLIANCE

Applicant:	Enping Shi Jinmiwang Electronic Co.,Ltd. No.123,Xingping North Road, Enping City,Guangdong, China
Product Description:	Wireless Microphone System
Brand Name:	N/A
Model Number:	KOK-193878-01
FCC ID:	VBQMIPUOK306
Serial Number:	N/A
File Number:	SZ002070501E2
Date of Test:	May. 16,2007~ May.25, 2007

We hereby certify that:

The report for the equipment was prepared by Shenzhen Attestation Of Global Compliance Technology Co., Ltd. The test data, data evaluation, test procedures, and equipment configurations shown in this report were made in accordance with the procedures given in TIA/EIA 603; ANSI C 63.4:2003 and the sample tested as described in this report is in compliance with the FCC Rules Part 74 Subpart H. The test results of this report relate only to the tested sample identified in this report.

Approved By



King / Q.A. Manager

Shenzhen Attestation Of Global Compliance
Science&Technology Co., Ltd

Table of Contents

1. GENERAL INFORMATION	4
2. SYSTEM TEST CONFIGURATION	6
3. SUMMARY OF TEST RESULTS	9
4. DESCRIPTION OF TEST MODES	9
5. MAXIMUM TRANSMITTER POWRE	10
6. MODULATION CHARACTERISTICS	13
7. FREQUENCY TOLERANCE.....	19
8. EMISSION BANDWIDTH.....	22
9. UNWANTED RADIATION	24
APPENDIX 1 PHOTOGRAPHS OF SETUP.....	29
APPENDIX 2 PHOTOGRAPHS OF EUT.....	31

1. GENERAL INFORMATION

1.1 Product Description

Enping Shi Jinmiwang Electronic Co.,Ltd. Model: KOK-193878-01 (referred to as the EUT in this report). The EUT is a Wireless Microphone System designed as Low Power Auxiliary Stations for transmitting voice only. It is designed by way of utilizing the FM modulation achieves the system operating.

A major technical descriptions of EUT is described as following:

- A). Frequency Tolerance: 0.00046% (0.005%)
- B). Communication Type: Voice/Tone only
- C). Modulation: FM
- D). Emission type: F3E
- E). Emission designator: 120K7F3E (2M+2DK, M=12, D=48.36, K=1, Necessary Bandwidth = 120.72 KHz)
- F). Emission Bandwidth: 146.88 KHz (Limit: 200 KHz)
- G). Peak Frequency Deviation: 48.36 KHz (Limit $< \pm 75$ KHz)
- H). Audio Frequency Response: 12KHz
- I). Maximum Transmitter Power: 1.15 mW (Limit: 50 mW)
- J). Output power Modification: Fixed can't be change
- K). Unwanted Radiation:
 - 1). At least 60 dB (Limit 25 dB) on any frequency removed from the center of the authorized bandwidth by more than 50% up to and including 100% of the authorized bandwidth.
 - 2). At least 65 dB (Limit 35 dB) on any frequency removed from the center of the authorized bandwidth by more than 100% up to and including 250% of the authorized bandwidth.
 - 3). At least 35 dB (Limit 13.61 dB) on any frequency removed from the center of authorized bandwidth by more than 250%)
- L). Antenna Designation: Integral
- M). Power Supply: 9V dc by battery
- N). DC Voltage= 7.2 V and DC Current=6.7 mA into the final stage for normal operation over the power range
- O). Battery Endpoint: DC 7.2 V
- P). Operating Frequency Range and Channels
Frequency Range: 67.3 MHz – 71.3MHz
- Q). Effective distance: 10M

1.2 Related Submittal(s) / Grant (s)

This submittal(s) (test report) is intended for FCC ID filing to comply with the FCC Part 74, Subpart H Rules.

1.3 Test Methodology

The radiated emission testing was performed according to the procedures of ANSI TIA/EIA 603 and FCC CFR 47 2.1046, 2.1047, 2.1049, 2.1051, 2.1053, 2.1055 and 2.1057

1.4 Test Facility

The open area test site used to collect the radiated data is located on the address of ACCURATE TECHNOLOGY CO.,LTD. The Open Area Test Site is 3m anechoic and calibrated to meet the FCC requirements in documents ANSI C63.4: 2003 and CISPR 22/EN 55022 requirements.

1.5 Special Accessories

Not available for this EUT intended for grant.

1.6 Equipment Modifications

Not available for this EUT intended for grant.

1.7 Differences between Models

Model Name	Differences
KOK-193878-01	Red LED Indicates Power Level
KOK-193878-01	Green LED Indicates Power Level

2. System Test Configuration

2.1 EUT Configuration

The EUT configuration for testing is installed on RF field strength measurement to meet the Commission's requirement and operating in a manner which intends to maximize its emission characteristics in a continuous normal application.

2.2 EUT Exercise

The Transmitter was operated in the normal operating mode. the TX frequency was fixed which was for the purpose of the measurements.

2.3 GENERAL TECHNICAL REQUIREMENTS

- a). Section 74.861 (e) - 1: Maximum transmitter power less than 50mW
- b). Section 74.861 (e) - 3: Peak Frequency Deviation less than ± 75 KHz
- c). Section 74.861 (e) - 4: Frequency Tolerance less than 0.005%

d). Section 74.861 (e) - 5: Emission Bandwidth shall less than 200KHz

e). Section 74.861 (e) - 6: Unwanted radiation

According to Section 74.861 (e) – 6, the mean power of emission shall be attenuated below the mean output power of the transmitter in accordance with the following schedule:

- 1). At least 25 dB on any frequency removed from the center of the authorized bandwidth by more than 50% up to and including 100% of the authorized bandwidth.
- 2). At least 35 dB on any frequency removed from the center of the authorized bandwidth by more than 100% up to and including 250% of the authorized bandwidth.
- 4). At least $43 + 10 \log_{10}(T)$ dB on any frequency removed from the center of the authorized bandwidth by more than 250%

2.4 Configuration of Tested System

Fig. 2-1 Configuration of Tested System

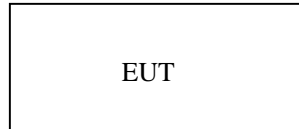


Table 2-1 Equipment Used in Tested System

Item	Equipment	Mfr/Brand	Model/Type No.	FCC ID	Series No.	Note
E-1	Wireless Microphone System	N/A	KOK-193878-01	VBQMIPUOK306	N/A	EUT

3. SUMMARY OF TEST RESULTS

FCC Rules	Description Of Test	Result
§ 74.861 (e)-1	Carrier Power	Compliant
§ 74.861 (e)-3	Frequency Deviation	Compliant
§ 74.861 (e)-4	Frequency Tolerance	Compliant
§ 74.861 (e)-5	Operating Bandwidth	Compliant
§ 74.861 (e)-6	Unwanted Radiation	Compliant

4. DESCRIPTION OF TEST MODES

The EUT (Wireless Microphone System) has been tested under normal operating condition. Two channels (the bottom 67.3 MHz and the top 71.3 MHz) have been chosen for testing. On each channel three axes have been evaluated for radiated emission.

5. MAXIMUM TRANSMITTER POWER

5.1 PROVISIONS APPLICABLE

According to FCC Part 74 Section 74.861(e) – 1: The power of the measured unmodulated carrier power at the output of the transmitter power amplifier may not exceed 50mW

5.2 MEASUREMENT PROCEDURE

- 1). On a test site, the EUT shall be placed on a turntable, and in the position closest to the normal use as declared by the user.
- 2). The test antenna shall be oriented initially for vertical polarization located 3m from the EUT to correspond to the transmitter.
- 3). The output of the antenna shall be connected to the measuring receiver and either a peak or quasi-peak detector was used for the measurement as indicated on the report. The detector selection is based on how close the emission level was approaching the limit.
- 4). The transmitter shall be switched on; if possible, without the modulation and the measurement receiver shall be tuned to the frequency of the transmitter under test.
- 5). The test antenna shall be raised and lowered through the specified range of height until the measuring receiver detects a maximum signal level.
- 6). The transmitter shall then be rotated through 360° in the horizontal plane, until the maximum signal level is detected by the measuring receiver.
- 7). The test antenna shall be raised and lowered again through the specified range of height until the measuring receiver detects a maximum signal level.
- 8). The maximum signal level detected by the measuring receiver shall be noted.
- 9). Replace the antenna with a proper Antenna (substitution antenna).
- 10). The substitution antenna shall be oriented for vertical polarization and, if necessary, the length of the substitution antenna shall be adjusted to correspond to the frequency of transmitting.
- 11). The substitution antenna shall be connected to a calibrated signal generator.
- 12). If necessary, the input attenuator setting of the measuring receiver shall be adjusted in order to increase the sensitivity of the measuring receiver.
- 13). The test antenna shall be raised and lowered through the specified range of the height to ensure that the maximum signal is received.

14). The input signal to substitution antenna shall be adjusted to the level that produces a level detected by the measuring receiver, that is equal to the level noted while the transmitter radiated power was measured, corrected for the change of input attenuation setting of the measuring receiver.

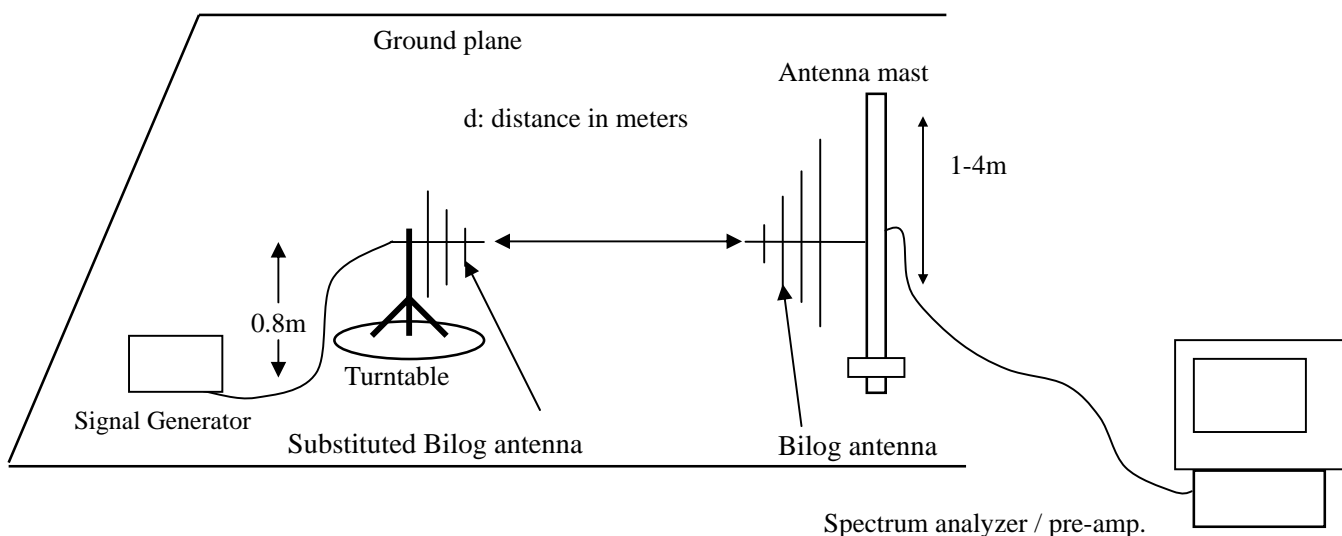
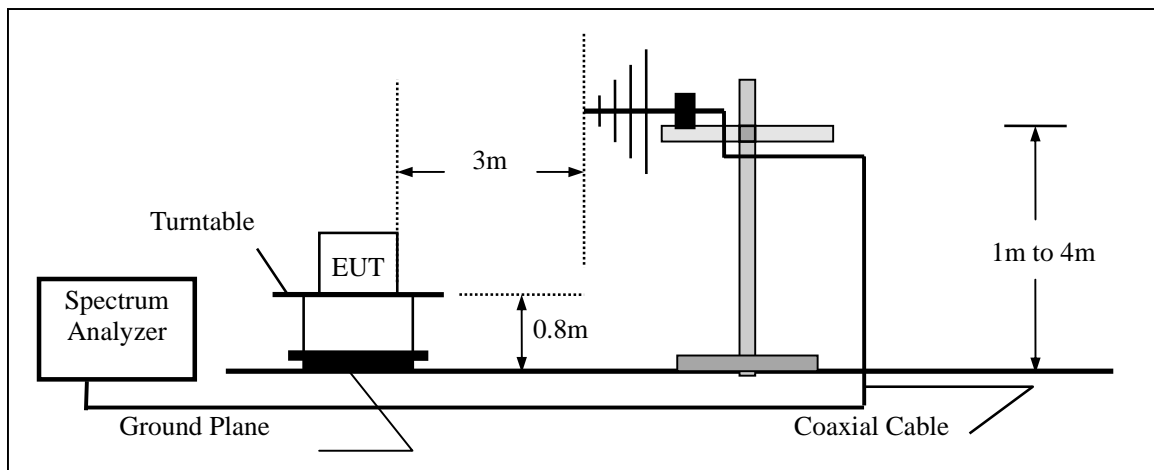
15). The input level to the substitution antenna shall be recorded as power level in dBm, corrected for any change of input attenuator setting of the measuring receiver.

16). The measurement shall be repeated with the test antenna and the substitution antenna oriented for horizontal polarization.

17). The measure of the effective radiated power is the larger of the two levels recorded, at the input to the substitution antenna, corrected for the gain of the substitution antenna if necessary.

5.3 TEST SETUP BLOCK DAIGRAM(setup block diagram of configuration)

TEST SETUP OF SUBSTITUTION METHOD:



5.4 MEASUREMENT EQUIPMENT USED:

Open Area Test Site					
EQUIPMENT TYPE	MFR	MODEL NO.	SERIAL NO.	LAST CAL.	CAL DUE.
Spectrum Analyzer	ADVANTEST	R3132	N/A	06/08/2006	06/07/2007
EMI Test Receiver	HP	8546A	3448A00232	06/08/2006	06/07/2007
Pre-Amplifier	HP	8447D	2944A07999	06/08/2006	06/07/2007
Bi-Log Antenna	EMCO	3142	9910-1436	06/08/2006	06/07/2007
Bi-Log Antenna	SCHAFFNER	CBL6143	5082	06/08/2006	06/07/2007
CABLE	TIME MICROWAVE	LMR-400	N-TYPE04	06/08/2006	06/07/2007

5.5 TEST RESULT

The Output Power of Wireless Microphone System

The channel-67.3 MHz

Freq. (MHz)	Antenna Polarity	Reading (dBm)	SGOP (dBm)	Ant. Gain (dB)	Dipole Gain (dBi)	Cable (dB)	Corrected Power		Limit (W)
							(dBm)	(mW)	
67.300	V	-26.19	-15.82	10.89	0	1.27	-6.2	0.24	0.05
67.300	H	-30.17	-18.99	10.89	0	1.27	-9.37	0.12	0.05

The channel-71.3 MHz

Freq. (MHz)	Antenna Polarity	Reading (dBuV)	SGOP (dBm)	Ant. Gain (dB)	Dipole Gain (dBi)	Cable (dB)	Corrected Power		Limit (W)
							(dBm)	(mW)	
71.300	V	-30.93	-9.09	11.24	0	1.53	0.62	1.15	0.05
71.300	H	-28.93	-20.03	11.24	0	1.53	-10.32	0.09	0.05

6. MODULATION CHARACTERISTICS

6.1 PROVISIONS APPLICABLE

- a).According to CFR 47 section 2.1047(a), for Voice Modulation Communication Equipment, the frequency response of the audio modulation circuit over a range of 100 to 5000Hz shall be measured.
- b). According to CFR 47 section 74.861(e)-3, any form of modulation may be used. A maximum deviation of ± 75 KHz is permitted when frequency modulation is employed.

6.2 MEASUREMENT METHOD

6.2.1 Modulation Limit

- 1). Configure the EUT as shown in figure 1, adjust the audio input for 60% of rated system deviation at 1KHz using this level as a reference (0dB) and vary the input level from -20 to $+20$ dB. Record the frequency deviation obtained as a function of the input level.
- 2). Repeat step 1 with input frequency changing to 300,1000,3000, and 14000Hz in sequence.

6.2.2 Audio Frequency Response

- 1). Configure the EUT as shown in figure 1.
- 2). Adjust the audio input for 20% of rated system deviation at 1 KHz using this level as a reference (0 dB).
- 3). Vary the Audio frequency from 100 Hz to 30 KHz and record the frequency deviation.

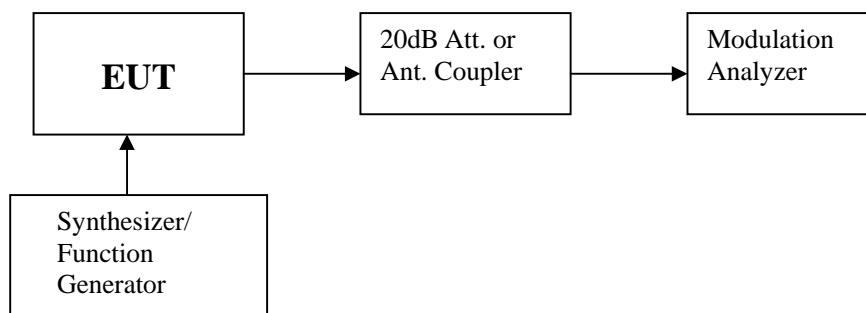


Figure 1: Modulation characteristic measurement configuration

6.3 MEASUREMENT INSTRUMENTS

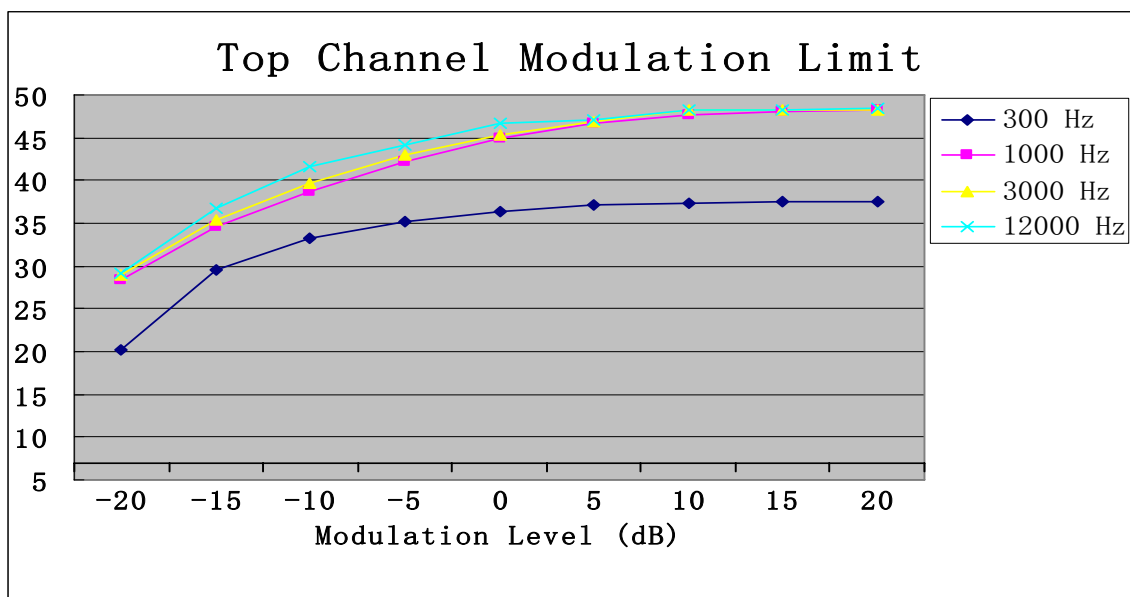
EQUIPMENT TYPE	MFR	MODEL NUMBER	LAST CAL.	CAL DUE.
Audio Signal Generator	HP	3325A	06/08/2006	06/07/2007
Modulation Analyzer	HP	8920B	06/08/2006	06/07/2007
Attenuator	MINI CIRCUITS	MCL BW-S20W2	06/08/2006	06/07/2007

6.4 MEASUREMENT RESULT

a). Modulation Limit:

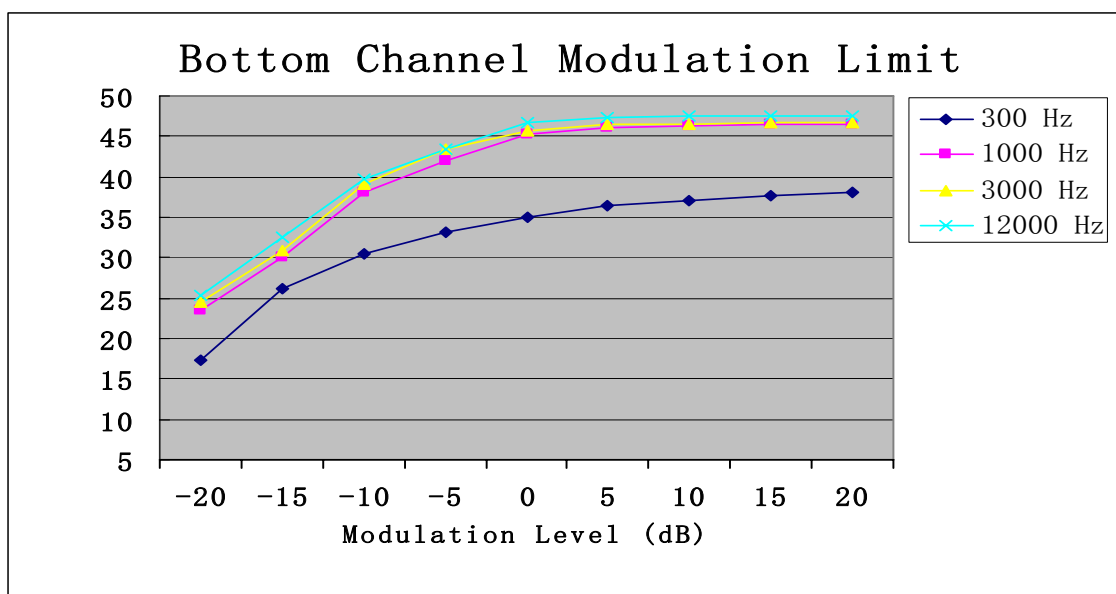
The channel – 71.3 MHz

Modulation Level (dB)	Peak Freq. Deviation At 300 Hz (KHz)	Peak Freq. Deviation At 1000 Hz (KHz)	Peak Freq. Deviation At 3000 Hz (KHz)	Peak Freq. Deviation At 12000 Hz (KHz)
-20	20.17	28.33	28.94	29.19
-15	29.52	34.52	35.38	36.68
-10	33.15	38.75	39.69	41.66
-5	35.20	42.29	43.01	44.15
0	36.38	45.02	45.25	46.77
+5	37.18	46.71	46.98	47.12
+10	37.39	47.58	48.19	48.25
+15	37.45	47.96	48.28	48.33
+20	37.52	48.15	48.34	48.36



The channel – 67.3 MHz

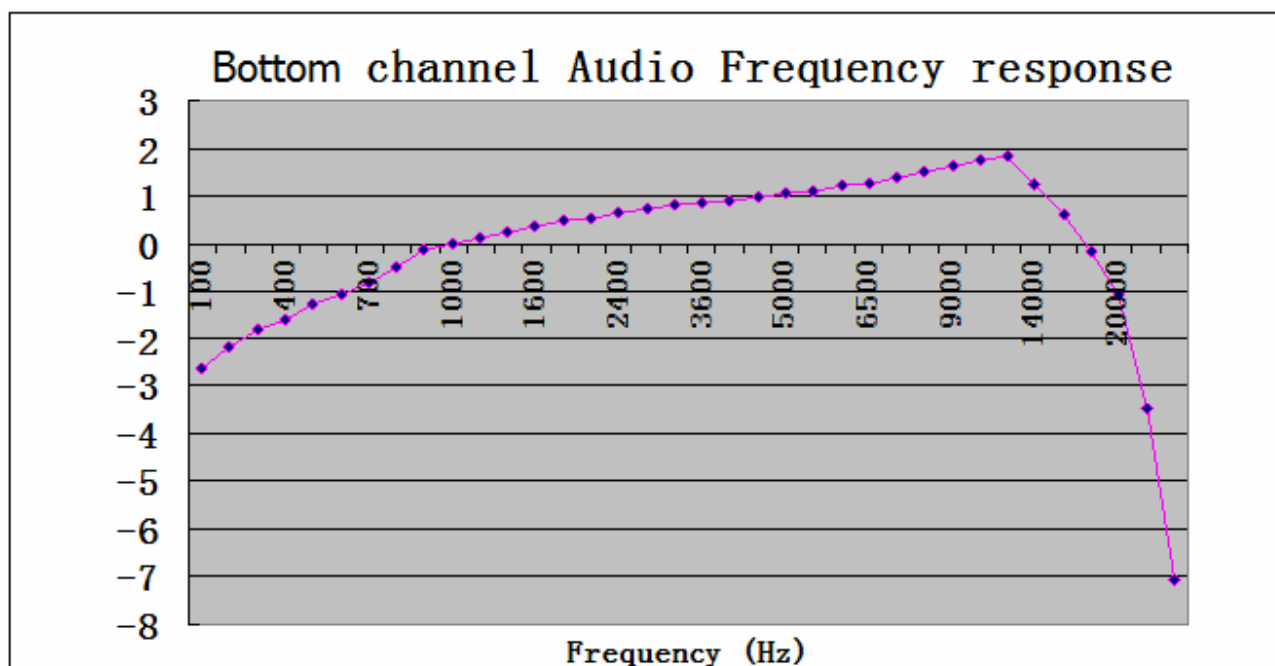
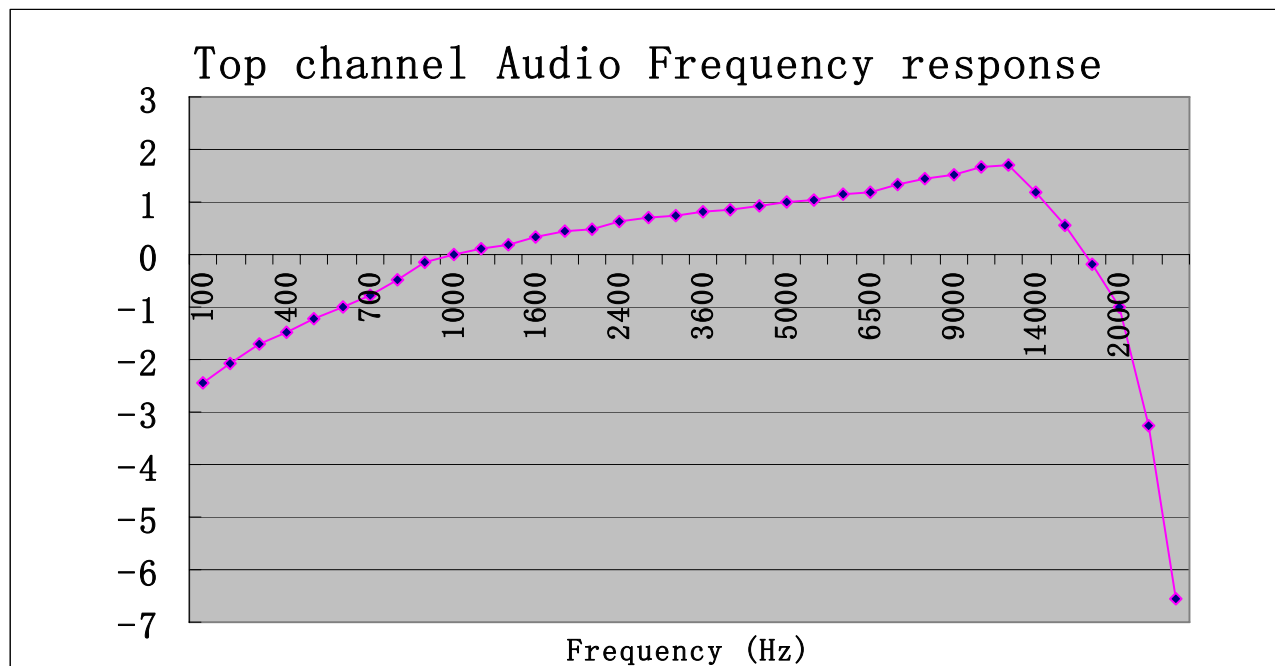
Modulation Level (dB)	Peak Freq. Deviation At 300 Hz (KHz)	Peak Freq. Deviation At 1000 Hz (KHz)	Peak Freq. Deviation At 3000 Hz (KHz)	Peak Freq. Deviation At 12000 Hz (KHz)
-20	17.33	23.53	24.45	25.40
-15	26.12	30.03	30.89	32.57
-10	30.52	38.07	39.10	39.71
-5	33.09	42.06	43.34	43.46
0	35.09	45.32	45.73	46.68
+5	36.53	46.12	46.47	47.31
+10	37.14	46.38	46.56	47.52
+15	37.67	46.45	46.68	47.59
+20	38.08	46.49	46.74	47.63



b). Audio Frequency Response:

The channel – 71.3 MHz

Frequency (Hz)	Deviation (KHz)
100	11.32
200	11.86
300	12.37
400	12.65
500	13.08
600	13.39
700	13.72
800	14.21
900	14.78
1000	15.03
1200	15.20
1400	15.38
1600	15.60
1800	15.84
2000	15.92
2400	16.13
2800	16.27
3200	16.38
3600	16.49
4000	16.58
4500	16.72
5000	16.88
5500	16.96
6000	17.14
6500	17.25
7000	17.49
8000	17.72
9000	17.93
10000	18.19
12000	18.32
14000	17.25
16000	16.01
18000	14.71
20000	13.38
25000	10.33
30000	7.07



The channel – 67.3 MHz

Frequency (Hz)	Deviation (KHz)
100	11.11
200	11.67
300	12.21
400	12.50
500	12.95
600	13.28
700	13.63
800	14.14
900	14.74
1000	15.00
1200	15.18
1400	15.37
1600	15.60
1800	15.85
2000	15.94
2400	16.16
2800	16.30
3200	16.42
3600	16.53
4000	16.63
4500	16.78
5000	16.94
5500	17.03
6000	17.22
6500	17.33
7000	17.58
8000	17.83
9000	18.05
10000	18.32
12000	18.46
14000	17.33
16000	16.03
18000	14.67
20000	13.27
25000	10.07
30000	6.64

FREQUENCY TOLERANCE

7.1 PROVISIONS APPLICABLE

- a). According to FCC Part 2 Section 2.1055(a)(1), the frequency stability shall be measured with variation of ambient temperature from -30°C to $+50^{\circ}\text{C}$ centigrade.
- b). According to FCC Part 2 Section 2.1055(d)(2), for hand carried battery powered equipment, the frequency stability shall be measured with reducing primary supply voltage to the battery operating end point, which is specified by the manufacture.
- c). According to FCC Part 74 Section 74.861(e)-4, the frequency tolerance must be maintained within 0.005%.

7.2 MEASUREMENT PROCEDURE

7.2.1 Frequency stability versus environmental temperature

1. Setup the configuration per figure 1 for frequencies measurement inside an environment chamber, Install new battery in the EUT.
2. Turn on EUT and set SA center frequency to the EUT radiated frequency. Set SA Resolution Bandwidth to 1KHz and Video Resolution Bandwidth to 1KHz and Frequency Span to 50KHz. Record this frequency as reference frequency.
3. Set the temperature of chamber to 50°C . Allow sufficient time (approximately 30 min) for the temperature of the chamber to stabilize. While maintaining a constant temperature inside the chamber, turn the EUT on and measure the EUT operating frequency.
4. Repeat step 2 with a 10°C decreased per stage until the lowest temperature -30°C is measured, record all measured frequencies on each temperature step.

7.2.2 Frequency stability versus input voltage

1. Setup the configuration per figure 1 for frequencies measured at temperature if it is within 15°C to 25°C . Otherwise, an environment chamber set for a temperature of 20°C shall be used. Install new battery in the EUT.
2. Set SA center frequency to the EUT radiated frequency. Set SA Resolution Bandwidth to 1KHz and Video Resolution Bandwidth to 1KHz. Record this frequency as reference frequency.
3. For battery operated only device, supply the EUT primary voltage at the operating end point which is specified by manufacturer and record the frequency.

7.3 TEST SETUP BLOCK DIAGRAM(block diagram of configuration)

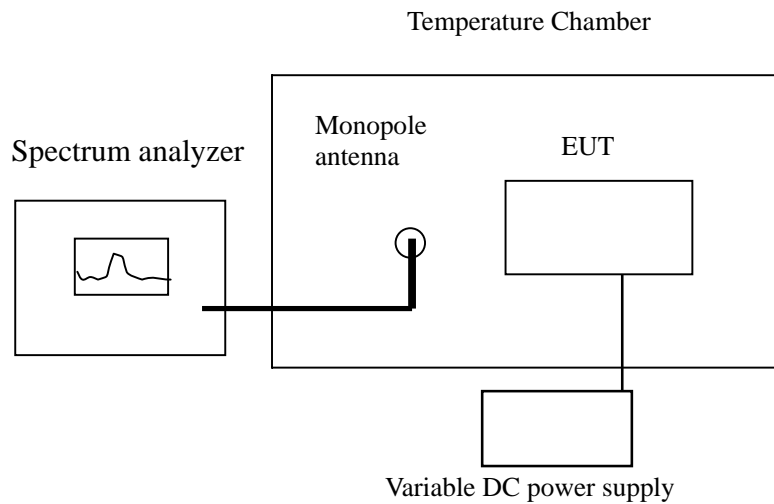


Figure 1

7.4 Test equipment used:

Equipment	Model No.	Serial No.	Cal. Due.
Advantest Spectrum Analyzer	R3132	120901472	06/06/2007
Shihin Temperature Chamber	BM50-CB	908	06/28/2007
DC Power Supply	WYK-605	N/A	05/28/2007
Huber + suhner low loss cable	N/A	N/A	06/06/2007
Monopole Antenna	N/A	N/A	N/A

7.5 TEST RESULT

a. Frequency stability versus input voltage (battery operation end point voltage is 7.2 V)

Wireless Microphone	Reference Frequency (MHz)	Frequency Measured at end point voltage	Frequency Error (%)	Limit (%)
Bottom channel	67.30	67.29969	-0.00046	0.005
Top channel	71.30	71.29981	-0.00026	0.005

b. Frequency stability versus ambient temperature

Top channel- 71.3 MHz

Reference Frequency: 71.30 MHz		Limit: $\pm 0.005\%$	
Environment Temperature (°C)	Power Supply	Frequency deviation measured with time Elapse (30 minutes)	
		(MHz)	%
50	New Battery	71.30012	0.000162
40	New Battery	71.30009	0.000128
30	New Battery	71.30003	0.000045
20	New Battery	71.30001	0.000010
10	New Battery	71.29996	-0.000051
0	New Battery	71.29993	-0.000094
-10	New Battery	71.29988	-0.000168
-20	New Battery	71.29982	-0.000256
-30	New Battery	71.29978	-0.000310

Bottom channel-67.3MHz

Reference Frequency: 67.3 MHz		Limit: $\pm 0.005\%$	
Environment Temperature (°C)	Power Supply	Frequency deviation measured with time Elapse (30 minutes)	
		(MHz)	%
50	New Battery	67.30012	0.000179
40	New Battery	67.30009	0.000141
30	New Battery	67.30004	0.000061
20	New Battery	67.30002	0.000028
10	New Battery	67.29997	-0.000043
0	New Battery	67.29994	-0.000082
-10	New Battery	67.29990	-0.000154
-20	New Battery	67.29984	-0.000231
-30	New Battery	67.29980	-0.000295

8. EMISSION BANDWIDTH

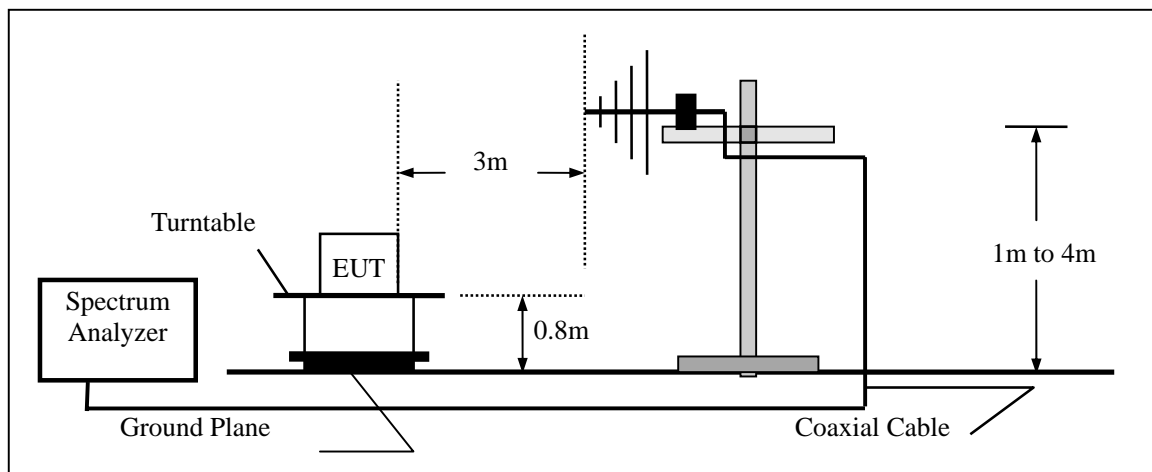
8.1 PROVISIONS APPLICABLE

According to FCC Part 74 Section 74.861(e)-5: The operation bandwidth shall not exceed 200 KHz

8.2 MEASUREMENT PROCEDURE

- 1). The EUT was placed on a turn table which is 0.8m above ground plane.
- 2). Set EUT as normal operation
- 3). Set SPA Center Frequency = fundamental frequency , RBW,VBW= 1 KHz, Span =200 KHz.
- 4). Set SPA Max hold. Mark peak, -26dB.

8.3 TEST SETUP BLOCK DIAGRAM (Block Diagram of Configuration)



8.4 MEASUREMENT EQUIPMENT USED:

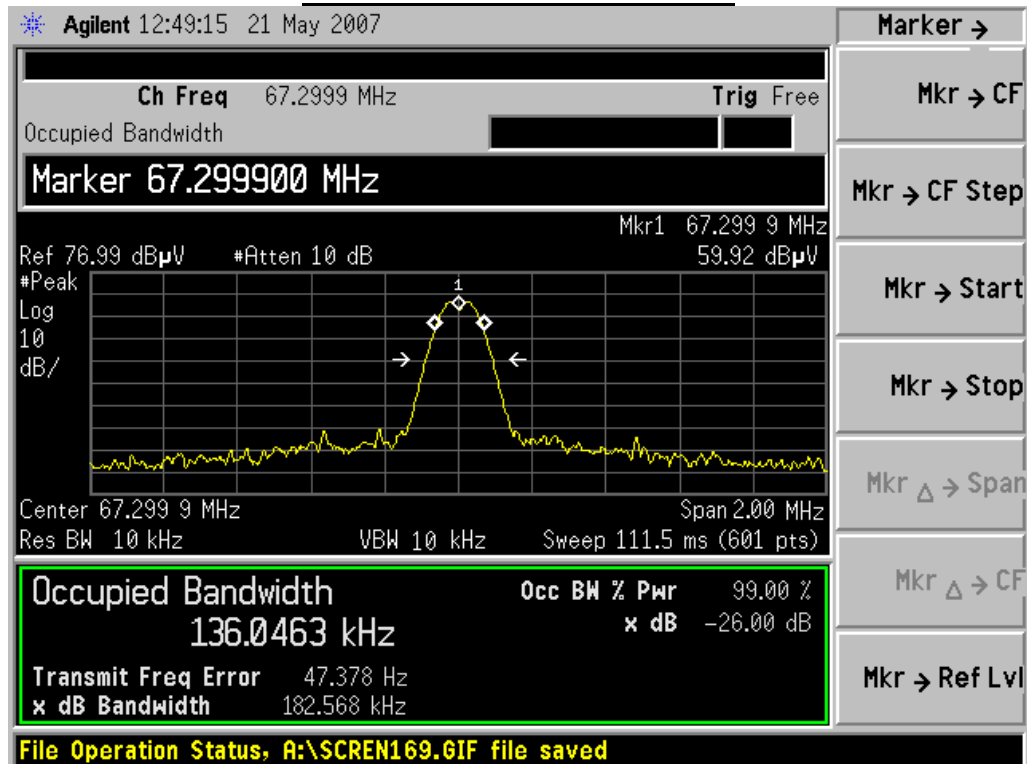
Open Area Test Site # 3					
EQUIPMENT TYPE	MFR	MODEL NUMBER	SERIAL NUMBER	LAST CAL.	CAL DUE.
Spectrum Analyzer	ADVANTEST	R3132	120901472	06/08/2006	06/07/2007
EMI Test Receiver	HP	8546A	3448A00232	06/08/2006	06/07/2007
Pre-Amplifier	HP	8447D	2944A07999	06/08/2006	06/07/2007
Bi-log Antenna	EMCO	3142	9910-1436	06/08/2006	05/07/2007

8.5 MEASUREMENT RESULT:

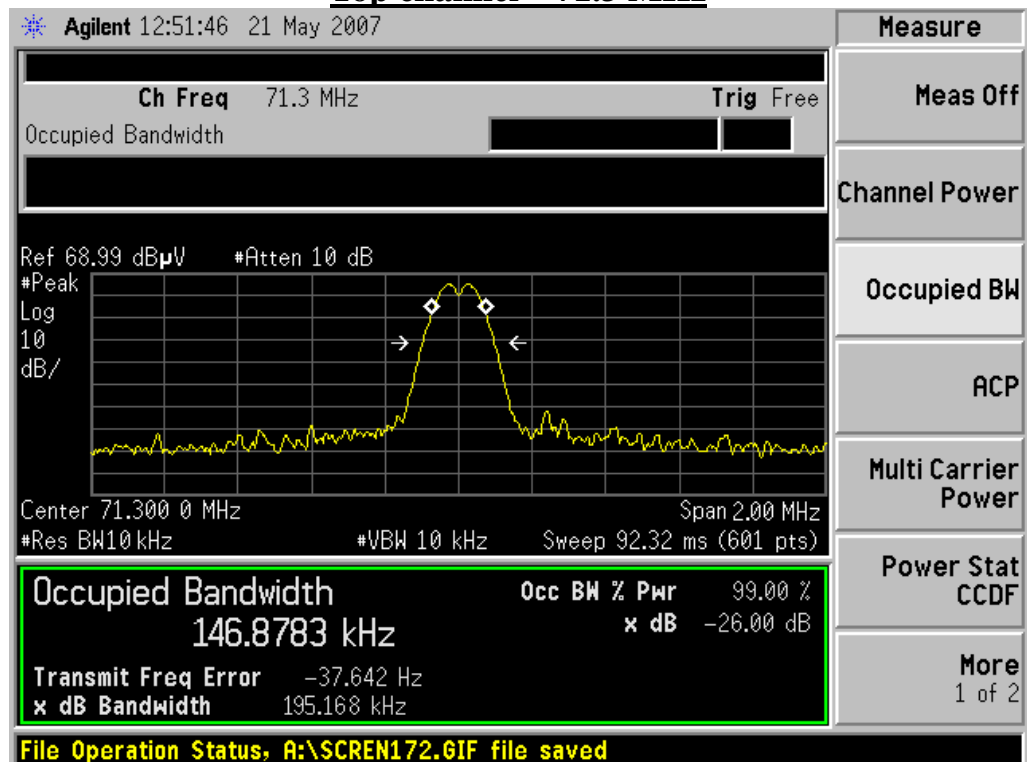
99% Power Occupation bandwidth = 146.88 KHz

Refer to attached data chart.

Bottom channel – 67.3 MHz



Top channel – 71.3 MHz



9. UNWANTED RADIATION

9.1 PROVISIONS APPLICABLE

According to Section 74.861(e)-6, The mean power of emissions shall be attenuated below the mean output power of the transmitter in accordance with the following schedule:

- 1). On any frequency removed from the operating frequency by more than 50 percent up to and including 100 percent of the authorized bandwidth: at least 25 dB;
- 2). On any frequency removed from the operating frequency by more than 100 percent up to and including 250 percent of the authorized bandwidth: at least 35 dB;
- 3). On any frequency removed from the operating frequency by more than 250 percent of the authorized bandwidth: at least $43 + 10 \log_{10} (TP)$ dB

9.2 MEASUREMENT PROCEDURE

- 1). On a test site, the EUT shall be placed on a turntable, and in the position closest to the normal use as declared by the user.
- 2). The test antenna shall be oriented initially for vertical polarization located 3m from the EUT to correspond to the transmitter.
- 3). The output of the antenna shall be connected to the measuring receiver and either a peak or quasi-peak detector was used for the measurement as indicated on the report. The detector selection is based on how close the emission level was approaching the limit.
- 4). The transmitter shall be switched on; if possible, without the modulation and the measurement receiver shall be tuned to the frequency of the transmitter under test.
- 5). The test antenna shall be raised and lowered through the specified range of height until the measuring receiver detects a maximum signal level.
- 6). The transmitter shall then be rotated through 360° in the horizontal plane, until the maximum signal level is detected by the measuring receiver.
- 7). The test antenna shall be raised and lowered again through the specified range of height until the measuring receiver detects a maximum signal level.
- 8). The maximum signal level detected by the measuring receiver shall be noted.
- 9). The measurement shall be repeated with the test antenna set to horizontal polarization.
- 10). Replace the antenna with a proper Antenna (substitution antenna).
- 11). The substitution antenna shall be oriented for vertical polarization and, if necessary, the length of the substitution antenna shall be adjusted to correspond to the frequency of transmitting.
- 12). The substitution antenna shall be connected to a calibrated signal generator.
- 13). If necessary, the input attenuator setting of the measuring receiver shall be adjusted in order to

increase the sensitivity of the measuring receiver.

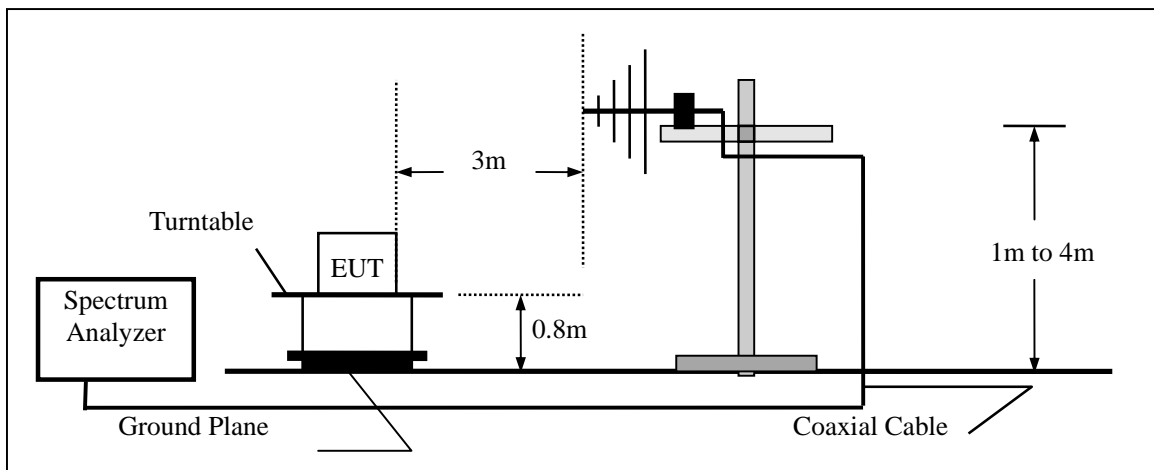
14). The test antenna shall be raised and lowered through the specified range of the height to ensure that the maximum signal is received.

15). The input signal to substitution antenna shall be adjusted to the level that produces a level detected by the measuring receiver, that is equal to the level noted while the transmitter radiated power was measured, corrected for the change of input attenuation setting of the measuring receiver.

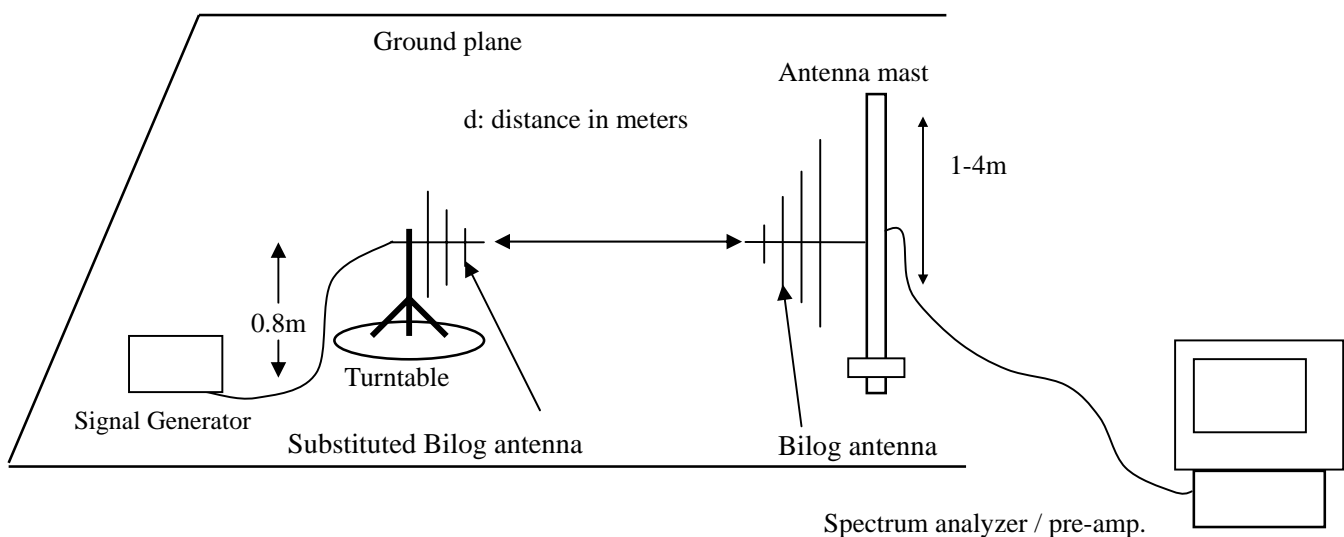
16). The input level to the substitution antenna shall be recorded as power level in dBm, corrected for any change of input attenuator setting of the measuring receiver.

17). The measurement shall be repeated with the test antenna and the substitution antenna oriented for horizontal polarization.

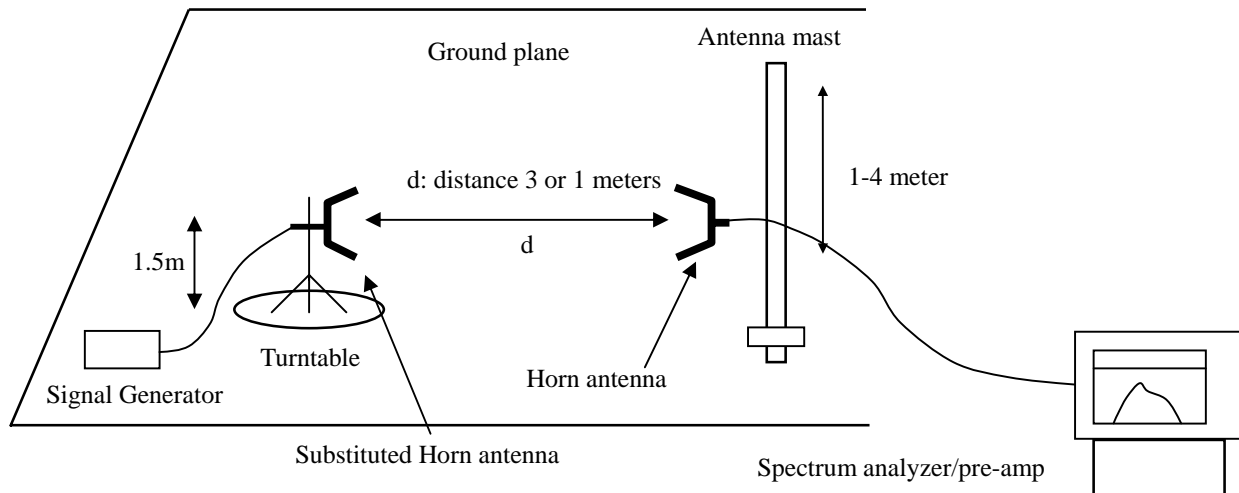
9.3 TEST SETUP BLOCK DIAGRAM (block diagram of configuration)



Radiation below 1GHz



Radiation above 1GHz



9.4 MEASUREMENT EQUIPMENT USED:

Open Area Test Site					
EQUIPMENT TYPE	MFR	MODEL NO.	SERIAL NO.	LAST CAL.	CAL DUE.
Spectrum Analyzer	ADVANTEST	R3132	N/A	06/08/2006	06/07/2007
EMI Test Receiver	HP	8546A	3448A00232	06/08/2006	06/07/2007
Pre-Amplifier	HP	8447D	2944A07999	06/08/2006	06/07/2007
Bi-Log Antenna	EMCO	3142	9910-1436	06/08/2006	06/07/2007
Bi-Log Antenna	SCHAFFNER	CBL6143	5082	06/08/2006	06/07/2007
CABLE	TIME MICROWAVE	LMR-400	N-TYPE04	06/08/2006	06/07/2007
Horn Antenna	ARA	DRG-118/A	104	06/08/2006	06/07/2007

9.5 MEASUREMENT RESULTS:

Calculation: Limit (dBm) = $EL - 43 - 10 \log_{10}(TP)$

Notes: EL is the emission level of the Output Power expressed in dBm,, in this application, the EL is 0.62 dBm.

$$\text{Limit (dBm)} = 0.62 - 43 - 10 \log_{10}(0.00115) = -13$$

Top channel & Bottom channels

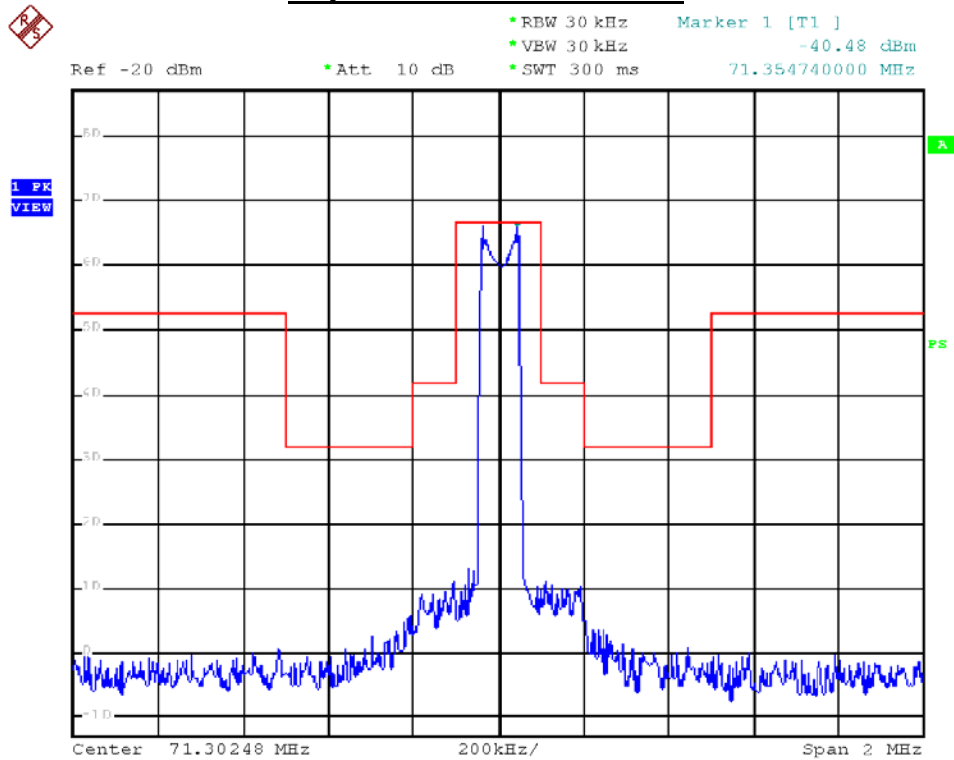
Frequency (MHz)	Reading level (dBm)	Antenna Polarization	S.G. (dBm)	Cable loss (dB)	Ant. Gain (dB)	Emission level (dBm)	Limit (dBm)	Margin (dB)
134.6	-67.28	H	-46.81	1.03	12.46	-35.38	-13	-22.38
134.6	-62.15	V	-38.27	1.03	12.46	-26.84	-13	-13.84
142.6	-73.39	H	-49.39	1.25	13.34	-37.3	-13	-24.3
142.6	-67.45	V	-42.28	1.25	13.34	-30.19	-13	-17.19
201.9	-79.84	H	-54.76	1.31	14.69	-41.38	-13	-28.38
201.9	-73.26	V	-47.87	1.31	14.69	-34.49	-13	-21.49
213.9	-86.25	H	-61.33	1.40	15.23	-47.5	-13	-34.5
213.9	-80.24	V	-54.18	1.40	15.23	-40.35	-13	-27.35
*	*						-13	

Notes: * means the output power of all the spurious frequency is at least 20dB down to the limit.

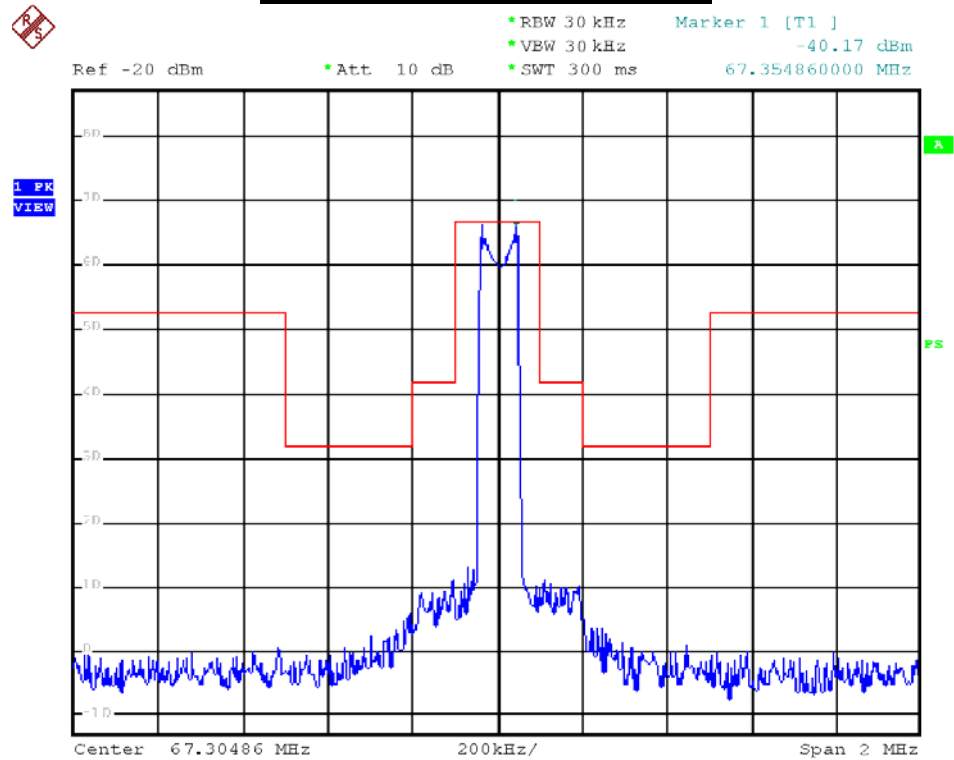
9.6 RADIATION EMISSION MASK:

Test plot for emission mask was acquired from field strength test result. The amplitude level of the spectrum analyzer employed the unit of dBm

Top channel – 71.30 MHz



Bottom channel – 67.30 MHz



APPENDIX 1

PHOTOGRAPHS OF SET UP

Radiated Emission Setup Photo



APPENDIX 2

PHOTOGRAPHS OF EUT

Front View of Microphone-1



Back View of Microphone-1



Top View of Microphone-1



Bottom View of Microphone-1



Front View of Microphone-2



Back View of Microphone-2



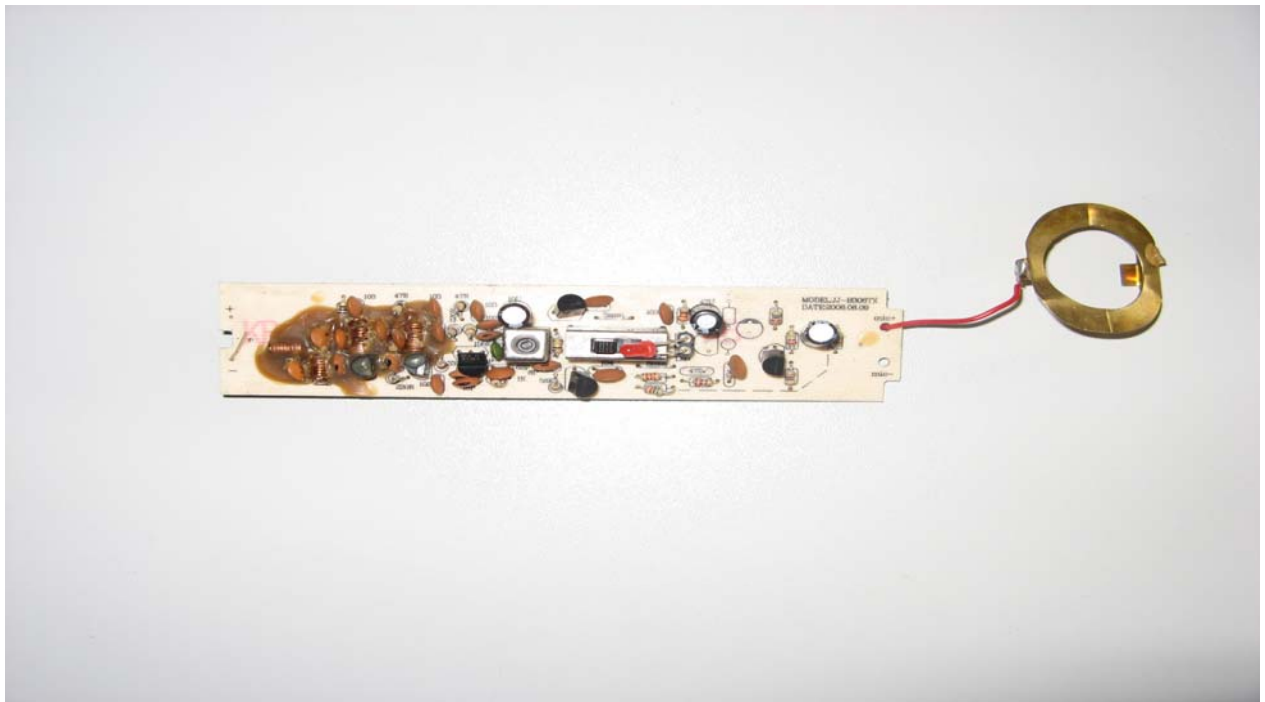
Top View of Microphone-2



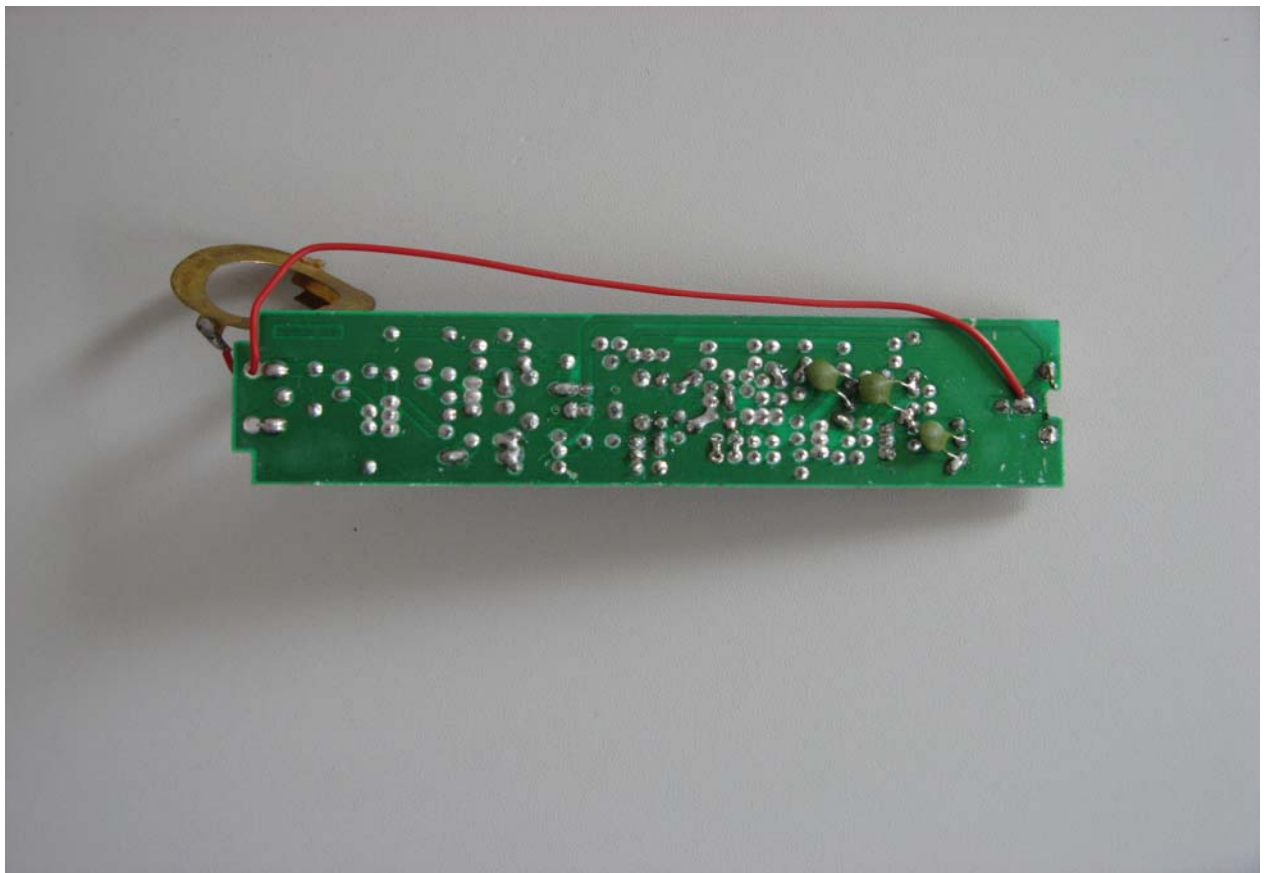
Bottom View of Microphone-2



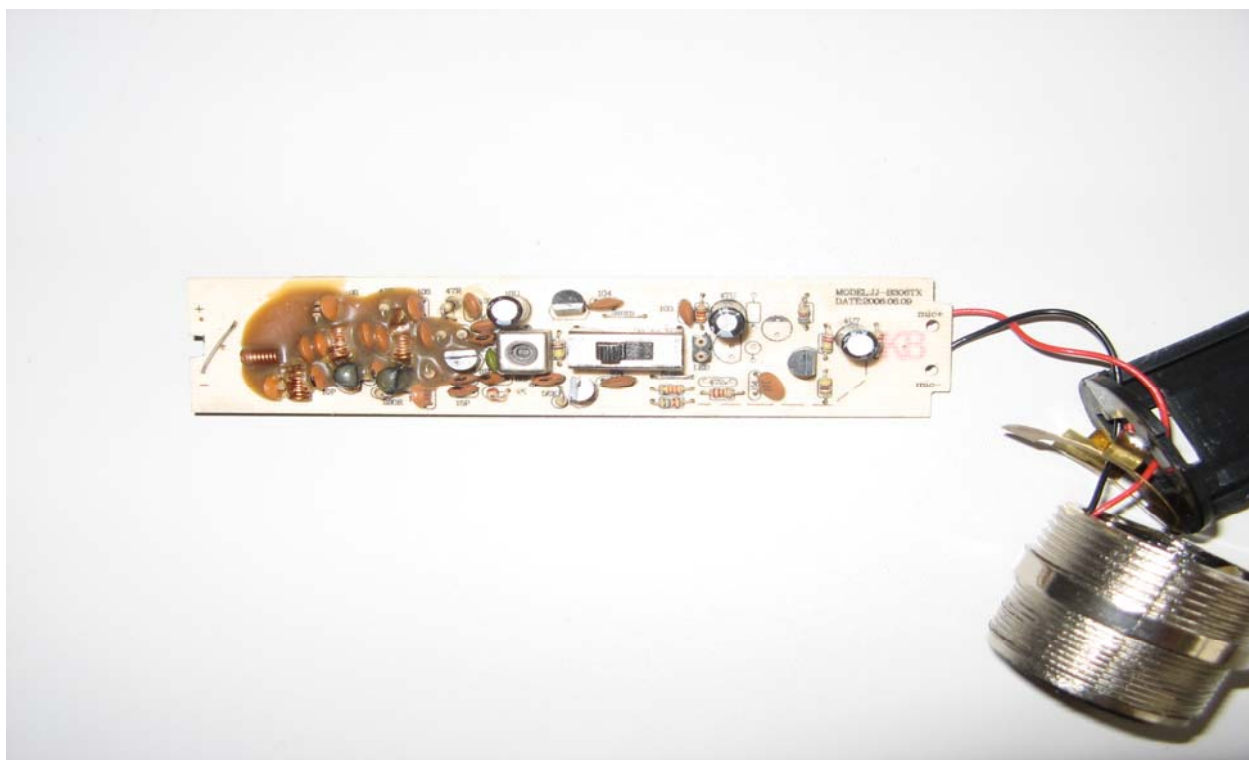
Internal View of Microphone-1



Internal View of Microphone-2



Internal View of Microphone-3



Internal View of Microphone-4

