



SGS Germany GmbH

Test Report No.: G2VG0005

Order No.: G2VG

Pages: 11

Munich, Aug 20, 2014

Client: Nokia Solutions and Networks US L.L.C.

Equipment Under Test: Flexi Zone Micro small cell, Omni configuration (1),
(1710 MHz – 2170 MHz)
PCTEL MHO80617102NM
Laird WXC2400SMRP-NS1

Manufacturer: Nokia Solutions and Networks US L.L.C

Task: Assessment of compliance with the requirements for
safety of general public to radio frequency electromagnetic fields
on base of

Test Specification(s):

- FCC 47 CFR § 1.1310
- RSS-102 Issue 4

Result: The configuration meets the above cited requirements

The test report shall not be reproduced except in full without
the written approval of the testing laboratory

The results relate only to the items tested as described in this test report.

edited by:

Date

Signature

Werner
Qualification Engineer

Aug 20, 2014

approved by:

Date

Signature

Bauer
Lab Manager EMC

Aug 21, 2014

This document was signed electronically.

CONTENTS

1 Summary	3
2 References	4
2.1 Specifications	4
2.2 Glossary of Terms	4
2.3 Bibliographical Data	4
3 General Information	5
3.1 Identification of Client	5
3.2 Test Laboratory	5
3.3 Time Schedule	5
3.4 Participants	5
4 Equipment Under Assessment (EUA).....	6
4.1 Typical Configuration	6
5 Evaluation of the EUA	8
5.1 Calculation	8
5.2 Results	9
6 Annexes.....	10
ANNEX A: Exposure limits	10
7 Disclaimer	11

The test report shall not be reproduced except in full without the written approval of the testing laboratory

1 Summary

This assessment is based on calculations according to OET Bulletin 65 (97-01) and C95.3 (2002) to demonstrate the compliance with the basic restrictions related to general public exposure to radio frequency electromagnetic fields with respect to FCC 47 CFR § 1.1310 and RSS-102.

Flexi Zone Micro small cell, Omni configuration (1) consists of a Blue Tooth (BT) antenna (Laird WXC2400SMRP-NS1) and two LTE Omni-directional antennas (PCTEL MHO80617102NM). Details of the configuration are given in section 4.

Flexi Zone Micro small cell, Omni configuration (1) is compliant with the cited standards at every point outside a distance R to the antenna.

Transmitter in operation	Distance R [m]	EIRP [W]	Power density ¹ [W/m ²]	Limit [W/m ²]
LTE (Main + DIV)	0.72	15.85	9.87	10
BT	0.02 ²	0.01	7.96	10
LTE + BT	0.72	15.86	9.74	10

The results of this assessment report refer exclusively to the item described in section 4 of this report

The test report shall not be reproduced except in full without the written approval of the testing laboratory

¹ taking into account 100% reflection

² near field to far field boarder

2 References

2.1 Specifications

- [1] FCC 47 CFR §1.1310
Radiofrequency radiation exposure limits
- [2] OET Bulletin 65, Edition 97-0, Evaluating Compliance with FCC, Guidelines for Human Exposure to Radiofrequency Electromagnetic Fields, Federal Communications Commission, Office of Engineering & Technology
- [3] RSS-102 Issue 4 March 2010, Radio Frequency (RF) Exposure Compliance of Radiocommunication Apparatus (All Frequency Bands), Industry Canada
- [4] IEEE Std C95.3TM-2002 (Revision of IEEE Std C95.3-1991) IEEE Recommended Practice for Measurements and Computations of Radio Frequency Electromagnetic Fields With Respect to Human Exposure to Such Fields, 100 kHz 300 GHz

2.2 Glossary of Terms

EUA: Equipment under Assessment
BT: Blue Tooth
GP: General Public
LTE: Long Term Evolution

2.3 Bibliographical Data

- [5] Antenna Specification: RF Multiband Omni-directional , PCTEL MHO6982170NM-NSN, NSN, D450393045 1.1, 2013-09-30, Matt Schirmacher
- [6] Antenna Specification: 2.4 – 2.5 GHz Quarter Wave Omni Dipol , Laird WXC2400SMRP-NS1, NSN, DocID_tbd 0.6, 2013-09-30, Matt Schirmacher
- [7] Operation data, NSN_Argon_BasestationEMEREquest.xlsx, NSN, 2013-10-25, Terry Schwenk
- [8] Test report: FZM Argon 2.1GHz Antenna Pattern, NSN, 2013-08-01, Jason Onstot.

3 General Information

3.1 Identification of Client

Nokia Solutions and Networks US L.L.C.
1455 W Shure Drive
Arlington Heights, IL. 60004
Terry Schwenk

3.2 Test Laboratory

SGS Germany GmbH
Hofmannstraße 50
81379 München

3.3 Time Schedule

Start of assessment: Aug 11, 2014
End of assessment: Aug 11, 2014

3.4 Participants

Name	Function
Helmut Werner	Editor / Assessment

The test report shall not be reproduced except in full without the written approval of the testing laboratory

4 Equipment Under Assessment (EUA)

- The EUA is a multi antenna configuration with a Blue Tooth (BT) antenna and two LTE Omni-directional antennas. The GPS Antenna was not part of the assessment because only the transmitting parts are relevant.



Figure 4-1 EUT: Omni configuration (1)

4.1 Typical Configuration

The antenna is connected through a power connector and cable to the Transceiver as shown in Figure 4-2.

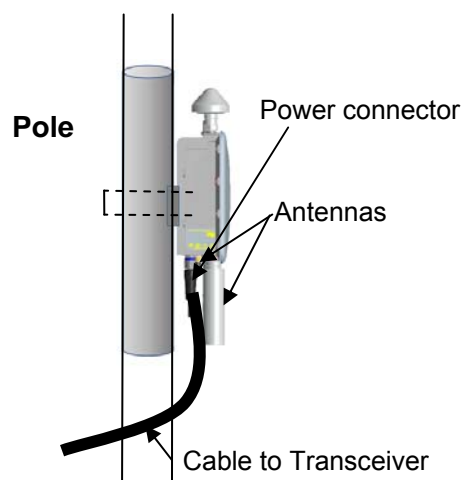


Figure 4-2 Typical configuration

The test report shall not be reproduced except in full without the written approval of the testing laboratory

The operation data for Flexi Zone Micro small cell, Omni configuration (1) are given in Table 4-1 and [7]

Power (P_{out})	LTE Main	5 W
	LTE Div	5 W
	BT	0.01 W
Total connector loss		0.0 dB
Total cable loss		0.0 dB
Total Loss (L) = Total connector loss + Total cable loss		0.0 dB
Number of transmitter unit (N)		1
Power at antenna input $= P_{out} N 10^{\frac{-L}{10}}$	LTE Main	5 W
	LTE Div	5 W
	BT	0.01 W
Antenna mounting height		≥ 4.6 m

Table 4-1 Antenna input data

The antenna specification for Flexi Zone Micro small cell, Omni configuration (1) is given in Table 4-2 and [7].

Type	PCTEL MHO80617102NM [5], [7]	(BT) Laird WXC2400SMRP-NS1 [6], [7]
Frequency (MHz)	1710 - 2170	2400 - 2483
Nominal Gain (dBi)	2 dBi	0 dBi
Polarization	vertical	vertical
Horizontal beam width (deg)	360	360
Vertical beam width (deg)	35	≥ 50
Electrical downtilt (deg)	0	0
Height (mm)	211	61

Table 4-2 Antenna data

E-UTRA Operating Band	Uplink (UL) operating band BS receive UE transmit	Downlink (DL) operating band BS transmit UE receive	Duplex Mode
	$F_{UL_low} - F_{UL_high}$	$F_{DL_low} - F_{DL_high}$	
1	1920 MHz – 1980 MHz	2110 MHz – 2170 MHz	FDD
2	1850 MHz – 1910 MHz	1930 MHz – 1990 MHz	FDD
4	1710 MHz – 1755 MHz	2110 MHz – 2155 MHz	FDD

Table 4-3 Operating mode

The test report shall not be reproduced except in full without the written approval of the testing laboratory

5 Evaluation of the EUA

5.1 Calculation

The calculation is based on OET Bulletin 65 (97-01) Section 2: Prediction Methods.

The equations for the truly worst-case prediction of power density¹ is applied. It takes into account a ground reflection of 100%. This is a worst – case prediction which overestimates the field strength in the near-field. It covers also the conditions of C95.3 Annex B.2

$$S = \frac{(2)^2 PG}{4\pi R^2} = \frac{PG}{\pi R^2} = \frac{EIRP}{\pi R^2} \quad \text{Eq (1)}^3$$

S = power density [W/m²]

P = power input to the antenna [W]

G = power gain of the antenna in the direction of interest relative to an isotropic radiator

R = distance to the center of radiation of the antenna [m]

Far field condition

$$R_{ff} = 0.6 \cdot D^2 / \lambda$$

D: Maximum dimension of the antenna

λ: Wavelength

The test report shall not be reproduced except in full without the written approval of the testing laboratory

³ OET Bulletin 65, Equation 6

5.2 Results

Antenna type	Maximum Dimension [m]	Wavelength [m]	R _{ff} [m]
PCTEL MHO80617102NM	0.210	143E-3	0.62
Laird WXC2400SMRP-NS1	0.061	125E-3	0.02

Table 5-1 Calculation far field

Antenna type	P[W]	G[dBi]	G _{num}	Duty Cycle ⁴	EIRP[W]
Omni main	5.00	2.00	1.58	100 %	7.92
Omni diversity	5.00	2.00	1.58	100 %	7.92
Blue tooth	0.01	0.00	1.00	100 %	0.01
Total					15.86

Table 5-2 Calculation EIRP

Transmitters in operation	Distance [m]	EIRP [W]	Power density ⁵ [W/m ²]	Limit [W/m ²]
LTE (Main + DIV)	≥ 0.72	15.85	≤ 9.87	10
BT	≥ 0.02	0.01	≤ 7.96	10
LTE + BT	≥ 0.72	15.86	≤ 9.74	10

Table 5-3 Compliance distance

The complete antenna configuration complies with the requirements of FCC 47 CFR § 1.1310 and RSS-102 Section 4.2 for general public electromagnetic exposure limits at a distance larger than 0.72 m

The test report shall not be reproduced except in full without the written approval of the testing laboratory

⁴ Worst case assumption

⁵ taking into account 100% reflection

6 Annexes

ANNEX A: Exposure limits

FCC 47 CFR §1.1310, electromagnetic exposure limits (MPE) for general public.

Exposure Characteristics	Frequency range (MHz)	Electric field strength (V/m)	Magnetic field strength (A/m)	Equivalent plane wave power density S (mW/cm ²)
General Population / Uncontrolled Exposure	0.3 – 3.0	614	1.63	100
	3.0 – 30	824/f	2.19/f	180/f ²
	30 – 300	27.5	0.073	0.2
	300 – 1500	--	--	f/1500
	1500 – 100,000	--	--	1.0

RSS-102 Section 4.2, RF Field Strength Limits for Devices Used by General Public (Uncontrolled Environment)

Frequency Range (MHz)	Electric Field (V/m rms)	Magnetic Field (A/m rms)	Power Density (W/m ²)	Averaging Time (minutes)
0.003-1	280	2.19	-	6
1-10	280/f	2.19/f	-	6
10-30	28	2.19/f	-	6
30-300	28	0.073	2*	6
300-1500	1.585 f ^{0.5}	0.0042 f ^{0.5}	f/150	6
1500-15000	61.4	0.163	10	6
15000-150000	61.4	0.163	10	616000/f ^{1.2}
150000-300000	0.158 f ^{0.5}	4.21 x 10 ⁻⁴ f ^{0.5}	6.67 x 10 ⁻⁵ f	616000/f ^{1.2}

Note: *f* is frequency in MHz.

* Power density limit is applicable at frequencies greater than 100 MHz.

7 Disclaimer

This document is issued by the Company under its General Conditions of Service available upon request. Attention is drawn to the limitation of liability, indemnification and jurisdiction issues defined therein.

Any holder of this document is advised that information contained hereon reflects the Company's findings at the time of its intervention only and within the limits of Client's instructions, if any. The Company's sole responsibility is to its Client and this document does not exonerate parties to a transaction from exercising all their rights and obligations under the transaction documents. Any unauthorized alteration, forgery or falsification of the content or appearance of this document is unlawful and offenders may be prosecuted to the fullest extent of the law.

The test report shall not be reproduced except in full without the written approval of the testing laboratory