

## EXHIBIT 10

### EXTERNAL PHOTOGRAPHS

#### SECTION 2.1033 (c) (12) External Photographs of the Equipment

Photographs (8"x10") of the equipment of sufficient clarity to reveal equipment construction and layout, including meters, if any, and labels for controls and meters and sufficient views of the internal construction to define component placement and chassis assembly. Insofar as these requirements are met by photographs or drawings contained in the instruction manuals supplied with the product certification request, additional photographs are necessary only to complete the required showing.

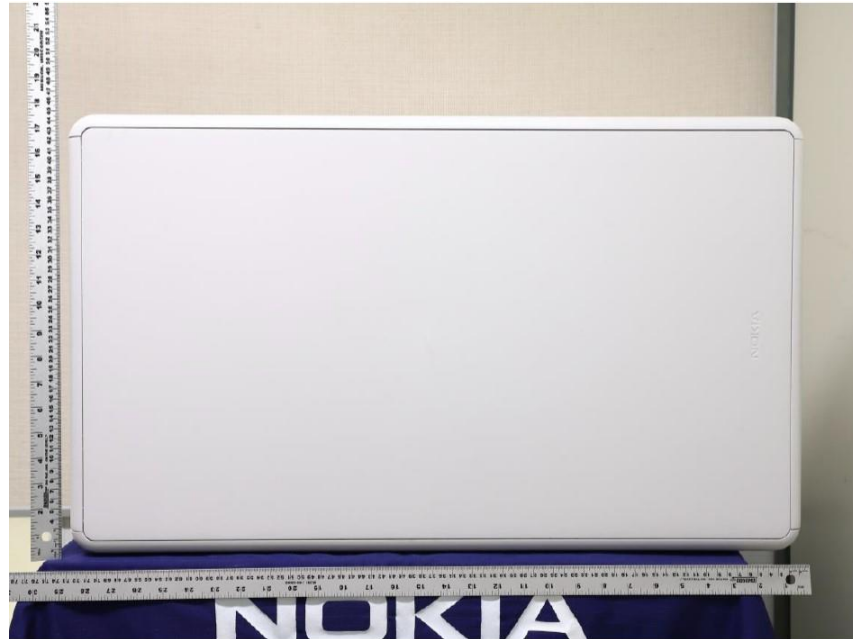
**Response:**

The external photographs of the **Nokia AirScale MAA 64T64R 192AE B48 AEQM** are included in this original filing under **FCC ID: VBNAEQM-02**.

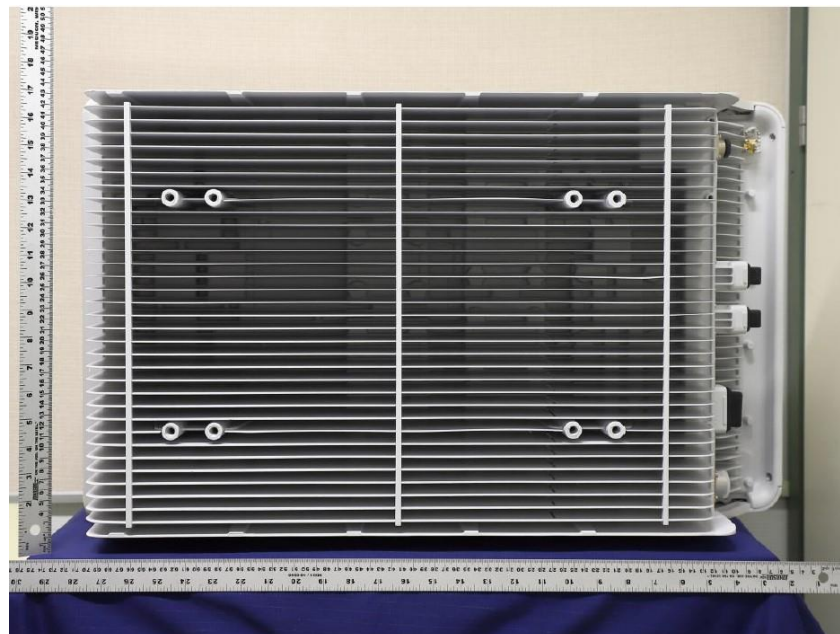
Nokia AirScale MAA 64T64R 192AE B48 AEQM, FCC ID: VBNAEQM-02

External Photographs

Front View



REAR VIEW



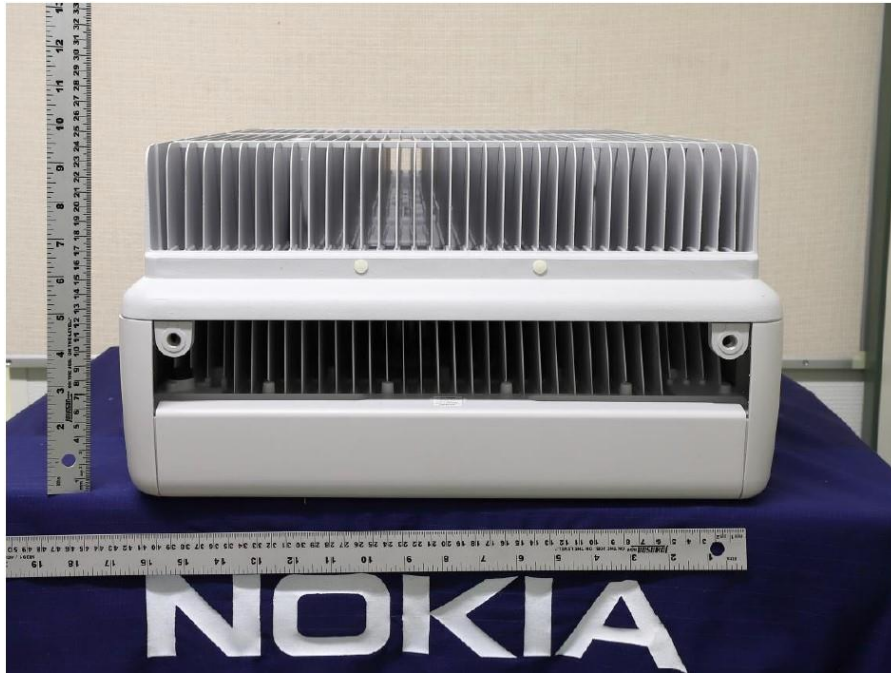
Left Side



Right Side



Top View



Bottom View

