

EXHIBIT 10: EXTERNAL PHOTOGRAPHS

SECTION 2.1033 (c) (12) External Photographs of The Equipment

Photographs (8"x10") of the equipment of sufficient clarity to reveal equipment construction and layout, including meters, if any, and labels for controls and meters and sufficient views of the internal construction to define component placement and chassis assembly. Insofar as these requirements are met by photographs or drawings contained in the instruction manuals supplied with the product certification request, additional photographs are necessary only to complete the required showing.

Response:

The external photographs of the **Nokia AirScale MAA 64T64R 128AE B41 120W AAHJ Radio Unit (AAHJ)** is included in this original filing under **FCC ID: VBNAAHJ-01** are below.

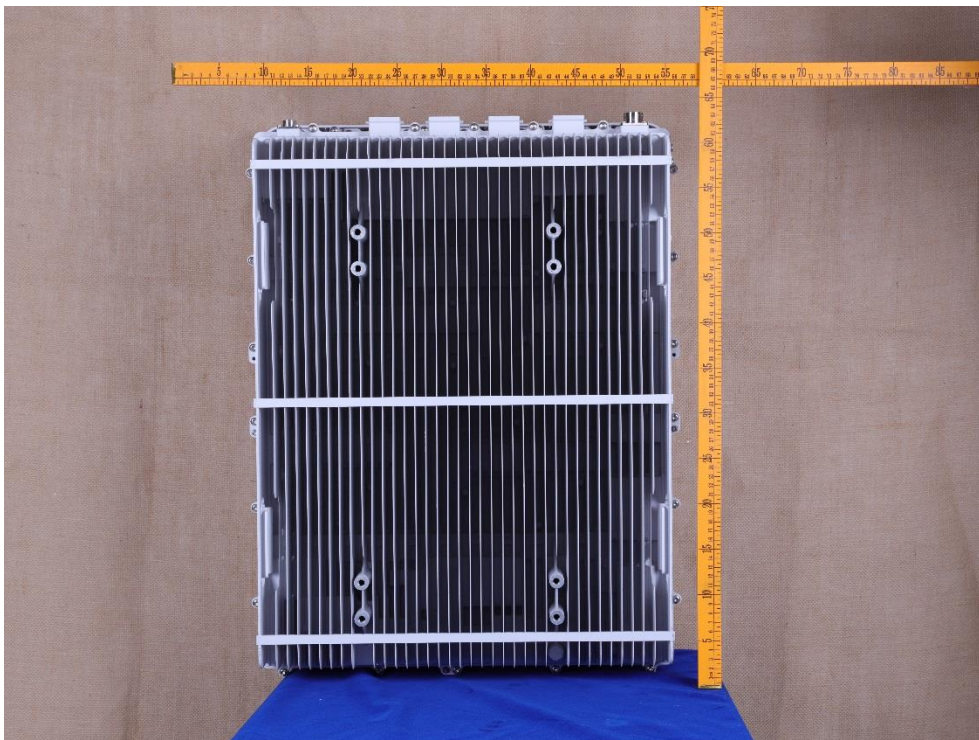
Nokia AirScale MAA AAHJ, FCC ID: VBNAAHJ-01

External Photographs

Front View



Rear View



External Photographs

Left Side



Right Side



External Photographs

Top View



Bottom View

