



**hanashi®** user's manual

**hanashi®**

User's manual



# **hanashi®** user's manual

## **Catalogue**

### **Disclaimer**

#### **Product introduction**

Package content

Product feature

System requirements

### **User notice**

General use

Data backup

Restriction on use of instant communication software

Notes

### **hanashi®** Operating description

### **hanashi®** description of menu

### **Use hanashi®**

Password administration

Install/ update instant communication software

Operating system menu

Select Languages

Download instant communication software

About **hanashi®**

Remove **hanashi®**

### **BlueSoleil™** software installation and set up

Install BlueSoleil™ software

Set up the Bluetooth device



## **hanashi® user's manual**

### **Disclaimer**

The Software is the product provided by the third party supplier under the protection of the intellectual property right, without the obligation of undertaking any liability for warranting or guaranteeing the quality of the software. User will be restrictions bestowed upon by user software licensing agreement for software applications. The Agreement is accompanied with or included inside the software (Authorization agreement). Unless you otherwise agree with the clauses of the Authorization Agreement, the software accompanied with or included inside the Authorization Agreement will not permitted for installation.

MKD technology will not be liable for any software damage incurred by application, modification, reproduction, and distribution. Under the circumstances, where any direct, indirect, accidental, punitive, exceptional, or resultant damage occurs (sales, revenue, profit, application, data, or loss of any other economic interest), the company will not bear any liability or responsibility. Liabilities and responsibilities will be transferees to the third-party supplier.

You can obtain the third party supplier information from the User Software Licensing Agreement or by telephone inquiry MKD Technology.



## **hanashi® user's manual**

### **Product introduction**

Thank you for choosing MKD Technology product. **hanashi®** can make your life conveniently and fast. You can use **hanashi®** in any computer and notebook. It is ability to transmit large amounts of data, save files, and immediate communication. It will bring you to completely different experience.

### **Package content**

- **hanashi®**
- user's manual

### **Product features**

- Available USB2.0 interface specification and compatible with USB1.1 specification.
- Support product to be hot plug , plug and play
- Do not need to install driver.
- USB disk supplies power directly; it is enabling to operate without any power source.
- Data security function.
- Include additional application software.
- The network instant communication brings to walk.
- With Bluetooth receiver function, such as Bluetooth mouse, Bluetooth keyboard, Bluetooth earphone etc.
- Support for multi-languages.

### **System requirement**

PC or notebook requires with USB2.0 interface specification and USB1.1 specification.

You may use the following system as:

- Windows® 2000 (SP4) above
- Windows® 2003 SP1 above
- Windows® XP SP2 above



## **hanashi®** user's manual

- Windows Vista™



## hanashi® user's manual

### Notes

Before you use this product, please view the user's manual and the follows instructions exactly.

#### General use

Additional software tools of **hanashi®** must be used only for computer. Please pay attention to the following items:

- You must execute **hanashi®** under the **hanashi®** software. After that you are able to use software programs correctly.
- Please inserted **hanashi®** into the USB-equipped PC or notebook. Then it is able to open and use the software tool function.
- After use **hanashi®** software tool, it will add several folders to your **hanashi®**, please do not attempt to edit, delete or revise.

#### Data backup

- MKD Technology dose not bear any product responsibility that lose data or damage the compensation liability caused by the use of the product. If you must to save the data to **hanashi®**, it is strongly recommended that you backup files to computer or save to other devices, in order to ensure the files can be kept completely.
- In order to guarantee you are using **hanashi®** with USB 2.0 high transmission, please confirm the computer system and motherboard that can support with USB 2.0. Also it needs to install USB 2.0 driver. If you are not sure this relevant information, please view your computer system and user's manual of motherboard.

#### Restriction of software

**hanashi®** support for MSN, Windows Live Messenger, Yahoo! Messenger, Skype and QQ.

	Windows2000	Windows 2003	Windows XP	Vista
MSN	✓	✓	✓	✓
Windows Live Messenger	x	Administrator authority	Administrator authority	Administrator authority
Yahoo!	Administrator	Administrator	Administrator	Administrator



## hanashi® user's manual

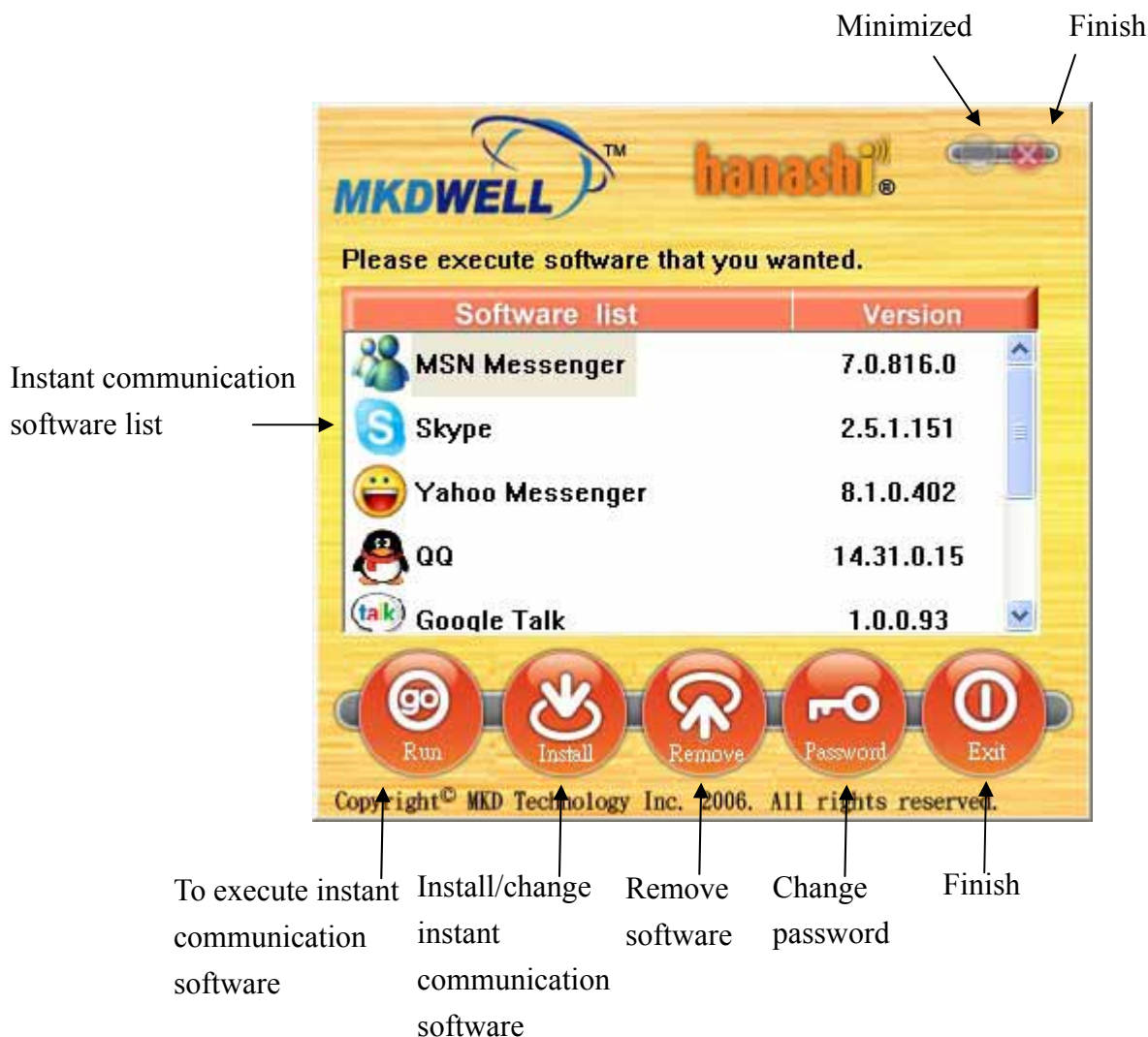
Messenger	authority	authority	authority	authority
Skype	▼	▼	▼	▼
QQ	▼	▼	▼	▼

### Notes

Please follow the user's manual「Remove hanashi」chapter that will help you to remove your **hanashi®** from your computer.

## hanashi® specification

### The menu list



### Use hanashi®

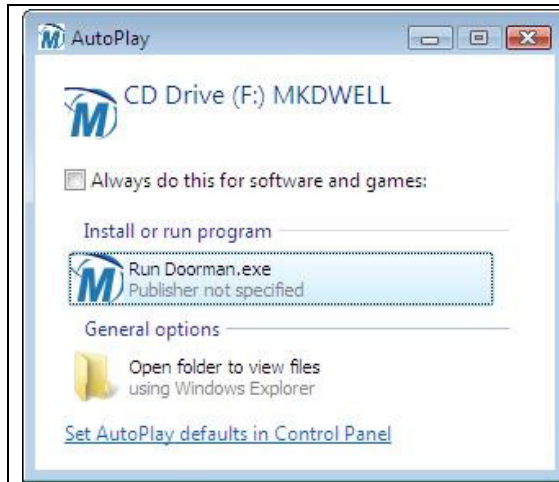
The product is equipped with the encryption protection function, if you login incompletely, it is unable to view the files and use the Bluetooth function.

- Please inserted **hanashi®** into the USB-equipped PC or notebook; **hanashi®** has Autorun function , it will execute 「password login」 automatically.

#### Windows Vista™user

Please click 「Run Doorman.exe」





- Login

As the following window, please input the password (for the first time, input the default password is “mkdwell” (in small English letters), then click on [OK],.

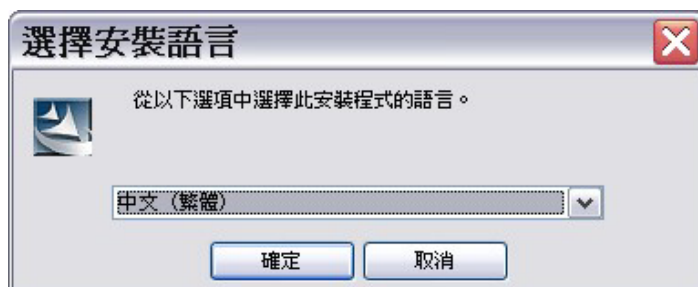


- The main menu

After confirm the password, it will display the list of instant communication software. Please select the software and then click on **【execute】**



If PC or notebook has not installed the relevant software of Bluetooth, it will appear 「BlueSoleil™ install software」 window, or 「Add hardware Wizard」. To use the Bluetooth function, please install BlueSoleil™ software first. Please view the user's manual of 「BlueSoleil™ install software and set up」 otherwise click on 【cancel】

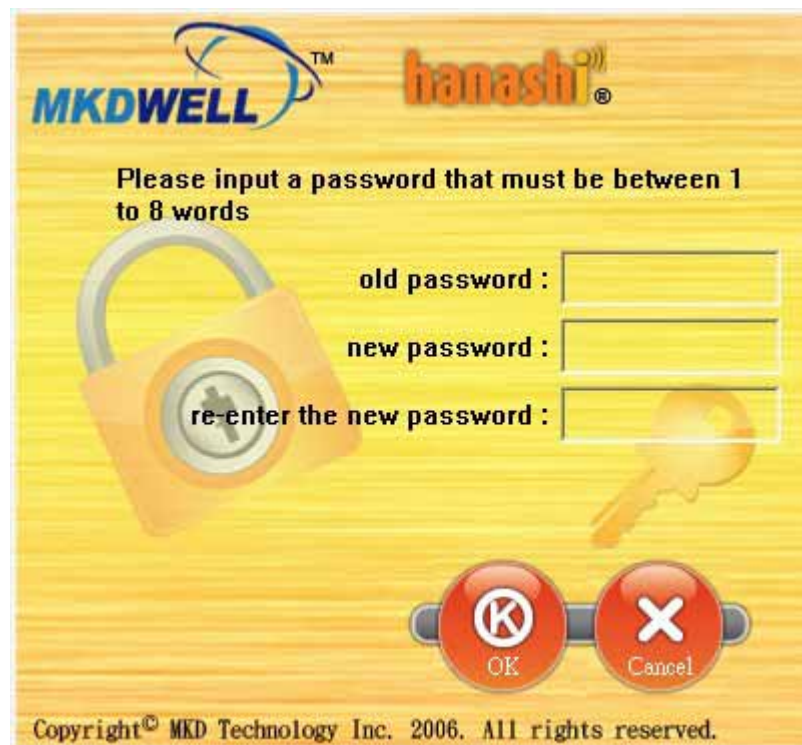




## Password administration

It is recommended you to set up your password for the first time to ensure the private information security. Remain you to write down your password, in case you forget it.

- To change the password (the following window) , go to main menu and click on 【Password】 . Input old password and new password then click on 【OK】



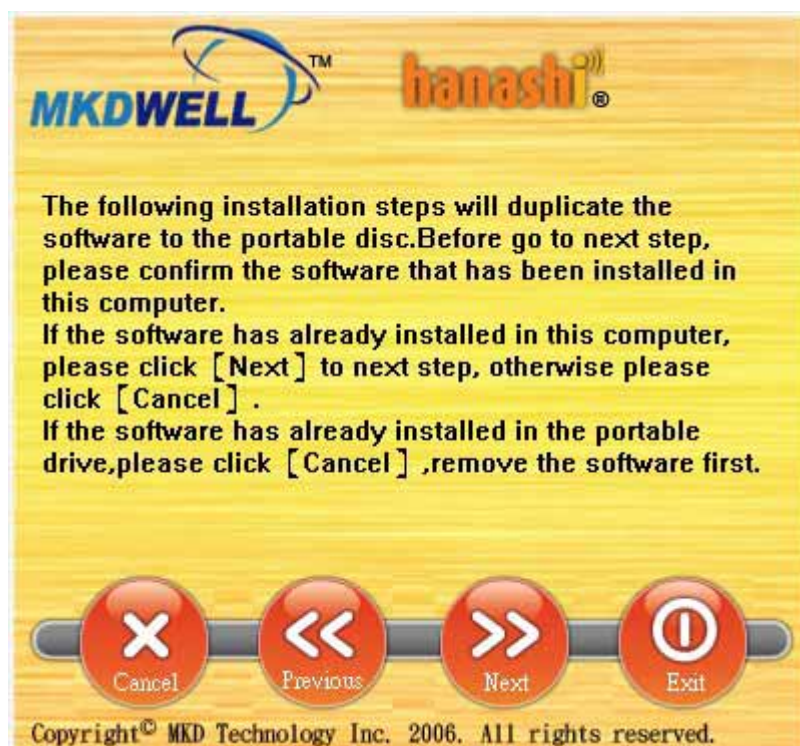
- Please wait a while the following window will appear 「 the password has been changed 」 . Please use the new password for the next time.



## Software installation & updating

Before installation /updating, please confirm the instant communication software has already been installed on PC or notebook. The installation will close the Bluetooth receiver and instant communication software that you are using. Please to finish the Bluetooth device's correlative work, in case the files are lost.

- Go to main menu and click on 【 Install 】 ( the following window), then click on 【 Next 】



- Please choose the instant communication software and install to **hanashi®**, then



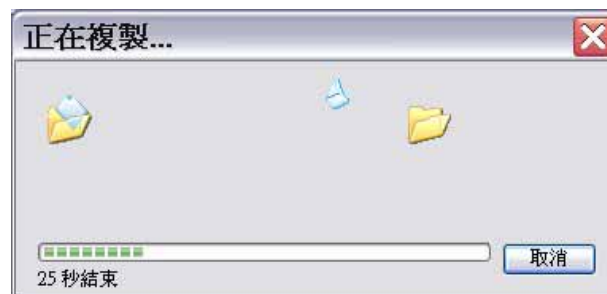
click on 【Next】 .



It needs to take few minutes to update, please wait patiently, the computer speed is slow at this moment. In case that update fail, please do not remove **hanashi®**. It will automatically update program when you connect to internet network.



- Updating, please do not click on [ Cancel] or [Esc] in case that updating fail.



- Prepare to update the process.




- Please wait a while, the following window will appear 「 Update Complete 」 ,and then click on 【OK】 .



- Click on **【OK】** . Remove the **hanashi®** then plug in again.



## Operating system menu

Move the mouse to lower right corner of system tray. Find the **hanashi®** icon , then double-click the left button to open **hanashi®** main menu, or click on right button for once to open **hanashi®** system menu.

## Choose language

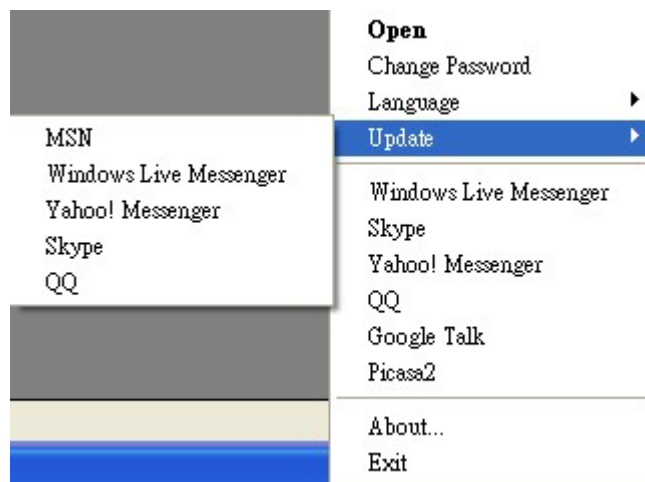
[System menu] → [Language] → [choose language].

## Download instant communication software

May download instant communication software on website, or go to **【System menu】** → **【Update checking】** to choose instant communication software.



After download completely, to execute instant communication software program, and then install software to hardware. After Install completely, please select the main menu 【Install】 to install new version. Please view the user's manual.



## About hanashi®

[System menu] → [About ...]. It is able to click the left button of mouse to close the window.


## Remove safely hanashi®

Under the Windows XP to remove **hanashi®**

Please close the software and file that you opened from **hanashi®** , and then remove the **hanashi®** directly from system.

Under the Windows 2000, 2003, Vista to remove **hanashi®**



Click the icon .

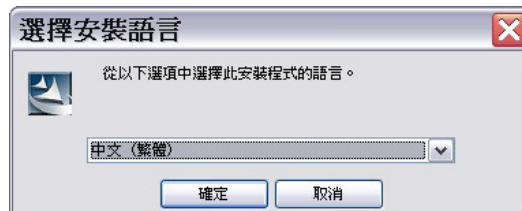
- Please click 「stopping large storage of USB device」  
停止 USB 大量存放裝置 - 磁碟機(F, E)
- The following window will appear 「Remove large storage of USB device」, then you can remove JetFlash from your system.



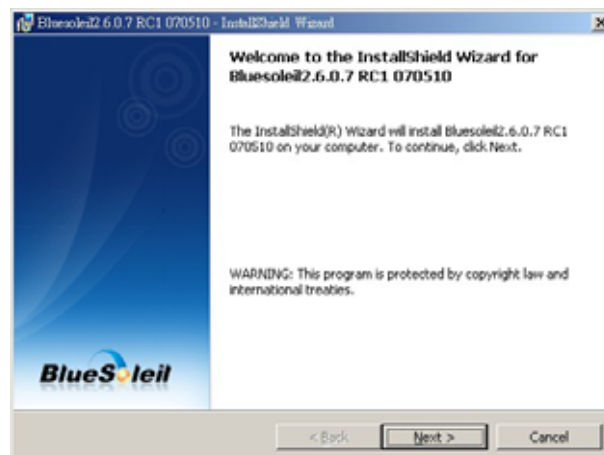
## BlueSoleil™ software installation and set up

Install **BlueSoleil™** Software

- Please choose language and then click **【Confirm】**.



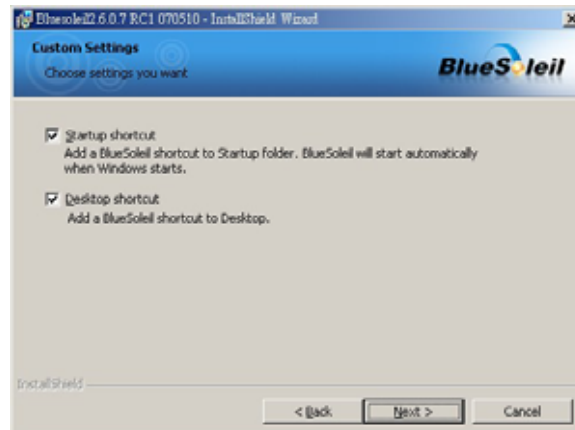
- click **【Next】**



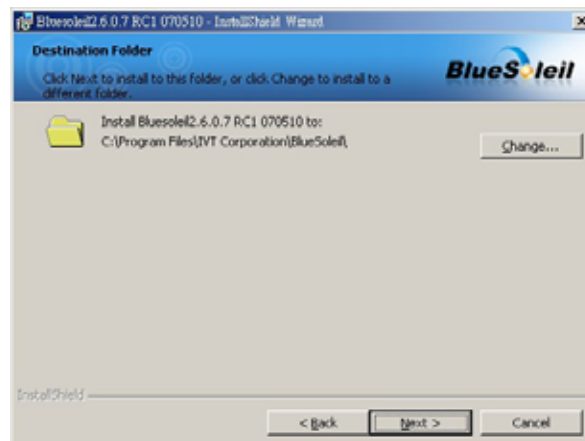
- After selecting 「 I accept the terms in the license agreement 」, click **【Next】**



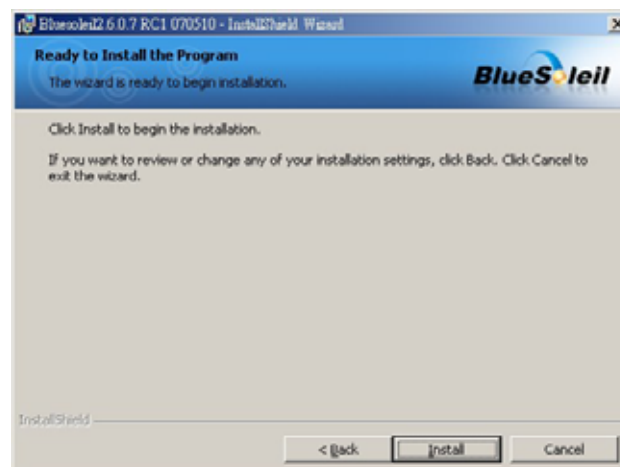
- click **【Next】**



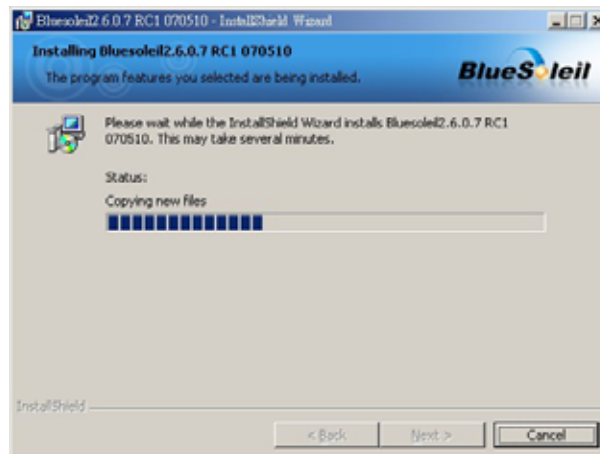
- To install to different folder, please click 【Change】 , and select another folder .Then click 【Next】 .



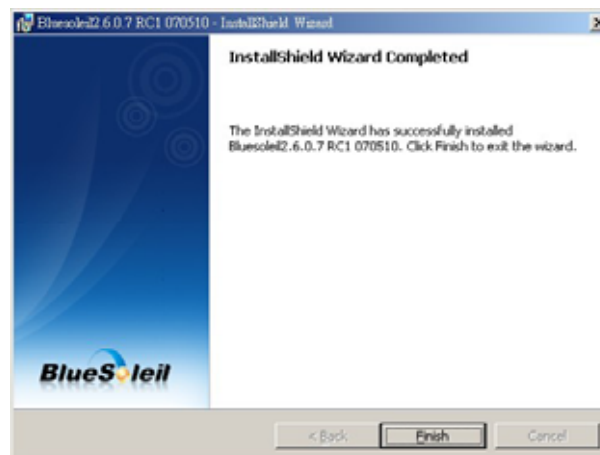
- Click 【Install】



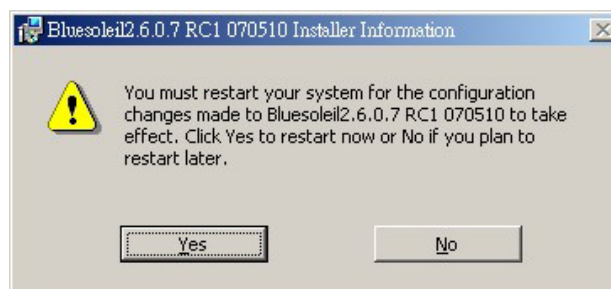
- Install BlueSoeil



- Click 【Finish】



- Click 【Finish】 to restart.



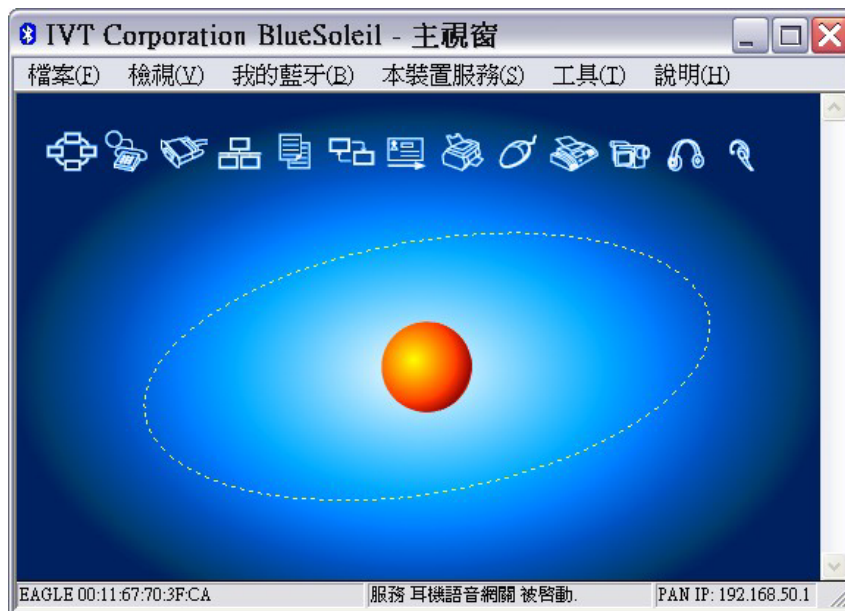
## Set up Bluetooth device

The following introduction of set up only for Bluetooth earphone, for other Bluetooth devices, please view the user's manual for set up of device.

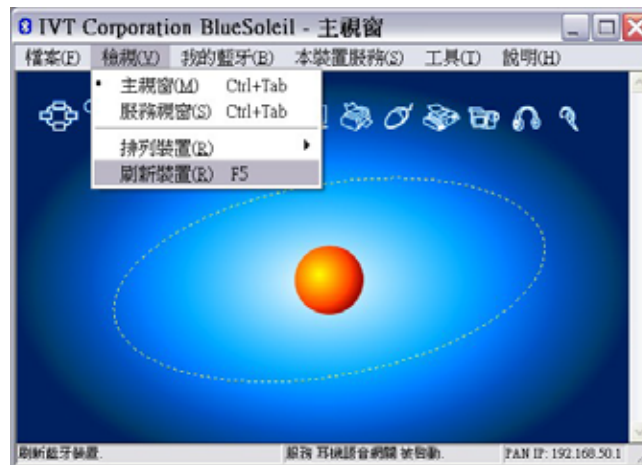
- Open BlueSoleil software.



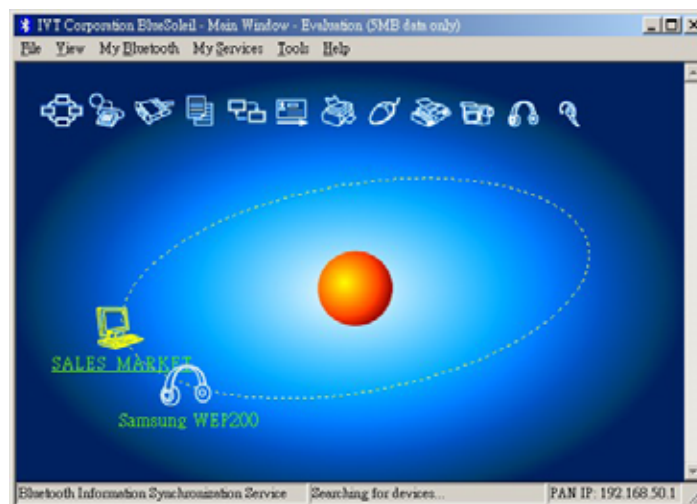
It will appear for the first time( as the above window), then click **【OK】** .



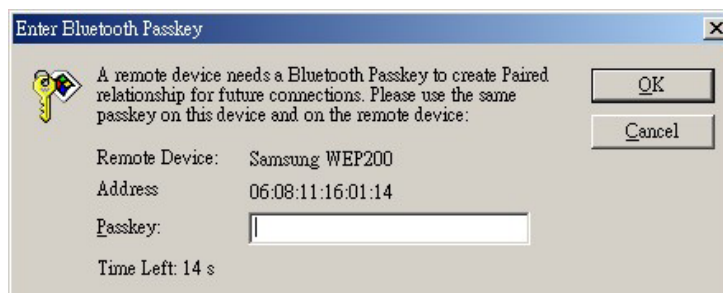
Please turn on power of your Bluetooth earphone, and setup it as pair state. Pair is connection agreement between Bluetooth and Bluetooth. Click [view] → [renew the device].



- BlueSoleil searches for Bluetooth devices automatically .It includes computer, mobile phone and earphone etc.



- Move the mouse to Bluetooth device ,and double click left bottom of mouse or click the right bottom for once to select 【Pair Device】 , after input 【Password】 click on 【OK】 .

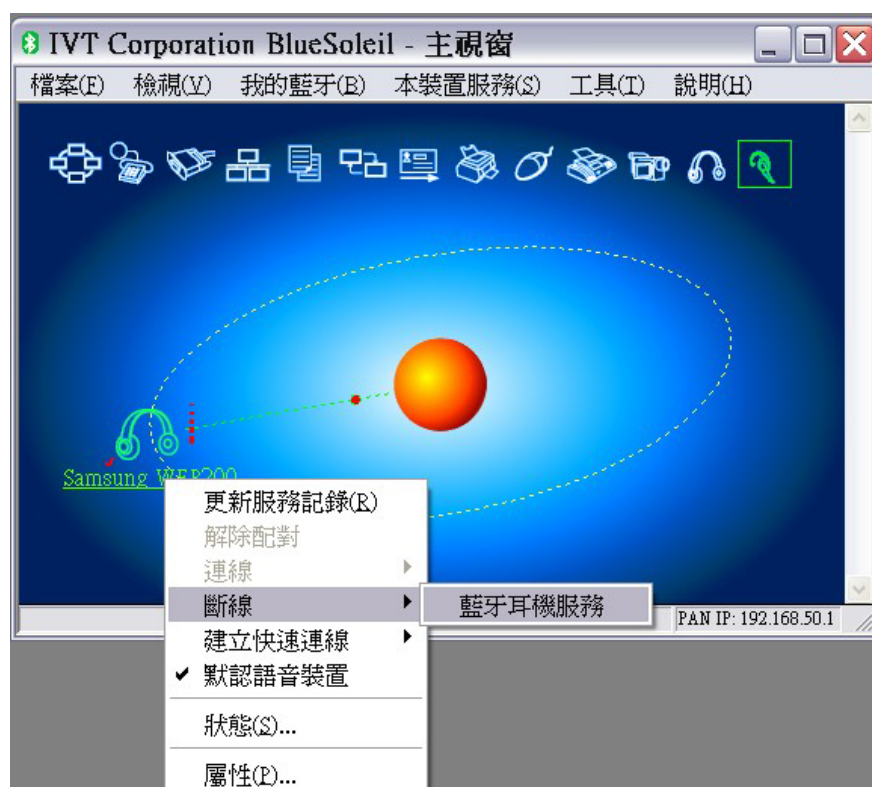


- After pair successfully , move the mouse to this Bluetooth device, and click right bottom to select **【connect】** → **【Bluetooth earphone service】** Setting your Bluetooth earphone allow to connect to the network.



After connect to the network, you can execute **hanashi®** of instant communication software chatting with your friends, or making free internet phone calls.

- If you want to disconnect Bluetooth device, please move your mouse to Bluetooth device then click right bottom to select **【disconnect】** → **【Bluetooth earphone Service】**







### MKD Technologies Hanashi Bluetooth function features

- \* Compliant with Bluetooth 2.0 + EDR specification for both 2Mbps and 3Mbps modulation modes in 2.4 GHz ISM band
- \* Flexible and robust voice CODEC algorithms (CVSD, A-law,  $\mu$ -law)
- \* Hard-wired Baseband functions such as FEC, Whitening, HEC, CRC, FCS, and Encryption/De-encryption
- \* Hardware support for all BT 2.0 packet types including
- \* Data packets: DM1, DM3, DM5; DH1, DH3, DH5; AUX, DV, 2DH1, 3DH1, 2DH3, 3DH3, 2DH5, 3DH5
- \* Voice packets: HV1, HV2, HV3, DV, EV3, EV4, EV5, 2EV3, 3EV3, 2EV5, 3EV5
- \* Link Control packets: ID, IQ, NULL, POLL, and FHS
- \* Support for extended-SCO operation (e-SCO)
- \* Support Piconet and Scatternet
- \* Full Bluetooth RF Interface & Lower Link Controller functions
- \* BT 2.0 Adaptive Frequency Hopping (AFH) avoids occupied RF channels
- \* BT 2.0 Fast Connection supported
- \* Full-featured hardware link controller with low-power mode and efficient data movement architecture
- \* Protocol Stack available, including drivers, link manager, and HCI.

#### Notice:

This product has been tested and found to comply with the limits for a Class B digital device, pursuant to Part 15 of the FCC Rules. These limits are designed to provide reasonable protection against harmful interference in a residential installation. This equipment generates, uses and can radiate radio frequency energy and, if not installed and used in accordance with the instructions, may cause harmful interference to radio communications. However, there is no guarantee that interference will not occur in a particular installation. If this equipment does cause harmful interference to radio or television reception, which can be determined by turning the equipment off and on, the user is encouraged to try to correct the interference by one or more of the following measures:

- Reorient or relocate the receiving antenna.
- Increase the separation between the equipment and receiver.
- Connect the equipment into an outlet on a circuit different from that to which the receiver is connected.
- Consult the dealer or an experienced radio/TV technician for help.



## hanashi® user's manual

**Caution:**

Any changes or modifications not expressly approved by the grantee of this device could void the user's authority to operate the equipment.

**FCC RF Radiation Exposure Statement:**

This equipment complies with FCC radiation exposure limits set forth for an uncontrolled environment. End users must follow the specific operating instructions for satisfying RF exposure compliance. This transmitter must not be co-located or operating in conjunction with any other antenna or transmitter.

**Compliance Statement:**

This device complies with Part 15 of the FCC Rules. Operation is subject to the following two conditions: (1) this device may not cause harmful interference, and (2) this device must accept any interference received, including interference that may cause undesired operation.

## Radio Characteristics – Basic Data Rate

### Transmitter

Radio Characteristics VDD = 2.85V Temperature = 25℃					
	Min	Typ	Max	Bluetooth Specification	Unit
Maximum RF transmit power		1		-6 ~ +4	dBm
RF power control range	-	13	-	$\geq 3$	dB
RF power range control resolution	-	3	-	-	dB
20dB bandwidth for modulated carrier		925	1000	$\leq 1000$	kHz
Adjacent channel transmit power $F=F_0 \pm 2\text{MHz}$		-43	-20	$\leq -20$	dBm
Adjacent channel transmit power $F=F_0 \pm 3\text{MHz}$		-56	-40	$\leq -40$	dBm
$\Delta F_{1\text{avg}}$ "Maximum Modulation"	140	170	175	140 ~ 175	kHz
$\Delta F_{2\text{max}}$ "Minimum Modulation"	115	133		115	kHz
$\Delta F_{1\text{avg}}/\Delta F_{2\text{avg}}$		0.88		$\geq 0.80$	
Initial carrier freq tolerance		30		$\pm 75$	kHz
Drift Rate	-	6	20	$\leq 20$	kHz/50us
Drift (single slot packet)	-	10	20	$\leq 25$	kHz
Drift (five slot packet)	-	9	25	$\leq 40$	kHz

### Receiver

Radio Characteristics VDD = 2.85V Temperature = 25℃					
	Min	Typ	Max	Bluetooth Specification	Unit
Sensitivity at 0.1% BER for all packet types		-90		$\leq -70$	dBm
Maximum received signal at 0.1% BER		0		$\geq -20$	dBm
C/I co-channel	-	9	11	$\leq 11$	dB
C/I $F=F_0+1\text{MHz}$		-4	0	$\leq 0$	dB
C/I $F=F_0-1\text{MHz}$		-1.5	0	$\leq 0$	dB
C/I $F=F_0+2\text{MHz}$		-35	-30	$\leq -30$	dB
C/I $F=F_0-2\text{MHz}$		-23	-30	$\leq -30$	dB
C/I $F \geq F_0+3\text{MHz}$		-45	-40	$\leq -40$	dB
C/I $F \leq F_0-6\text{MHz}$		-45	-40	$\leq -40$	dB
C/I $F=F_{\text{image}}$		-18	-9	$\leq -9$	dB
C/I $F=F_{\text{image}} \pm 1\text{MHz}$		-25		$\leq -20$	dB
Maximum level of Intermodulation Interfers		-37	-39	$\geq -39$	dBm

## Radio Characteristics – Enhanced Data Rate

### Transmitter

Radio Characteristics VDD = 2.85V Temperature = 25°C					
	Min	Typ	Max	Bluetooth Specification	Unit
Maximum RF transmit power		1		-6 ~ +4	dBm
Relative transmit power		1.1		-1 ~ +4	dB
Carrier frequency stability		3		$\leq 10$	kHz
Modulation Accuracy	RMS DEVM	6.4		$\leq 13$	%
	Peak DEVM	17		$\leq 25$	%

### Receiver

Radio Characteristics VDD = 2.85V Temperature = 25°C						
	Modulation	Min	Typ	Max	Bluetooth Specification	Unit
Sensitivity at 0.01% BER	$\pi/4$ DQPSK		-90		$\leq -70$	dBm
	8DPSK		-83		$\leq -70$	dBm
Maximum received signal at 0.1% BER	$\pi/4$ DQPSK		0		$\geq -20$	dBm
	8DPSK		0		$\geq -20$	dBm
C/I co-channel at 0.1% BER	$\pi/4$ DQPSK		+10		$\leq +13$	dB
	8DPSK		+16		$\leq +21$	dB
C/I F=F0+1MHz	$\pi/4$ DQPSK		-5		$\leq +0$	dB
	8DPSK		+0		$\leq +5$	dB
C/I F=F0-1MHz	$\pi/4$ DQPSK		-5		$\leq +0$	dB
	8DPSK		+0		$\leq +5$	dB
C/I F=F0+2MHz	$\pi/4$ DQPSK		-35		$\leq -30$	dB
	8DPSK		-30		$\leq -25$	dB
C/I F=F0-2MHz	$\pi/4$ DQPSK		-35		$\leq -30$	dB
	8DPSK		-30		$\leq -25$	dB
C/I F $\geq$ F0+3MHz	$\pi/4$ DQPSK		-45		$\leq -40$	dB
	8DPSK		-38		$\leq -33$	dB
C/I F $\leq$ F0-5MHz	$\pi/4$ DQPSK		-45		$\leq -40$	dB
	8DPSK		-38		$\leq -33$	dB
C/I F=F <sub>image</sub>	$\pi/4$ DQPSK		-17		$\leq -7$	dB
	8DPSK		-10		$\leq 0$	dB
C/I F=F <sub>image</sub> ±1MHz	$\pi/4$ DQPSK		-25		$\leq -20$	dB
	8DPSK		-18		$\leq -13$	dB