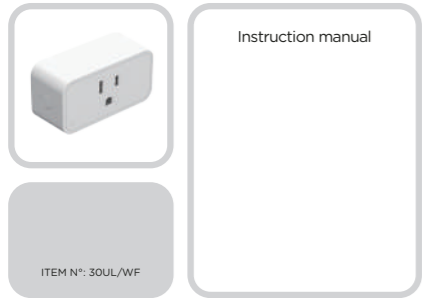




Indoor Wi-Fi Smart Plug



Important Safety Guidelines

SAVE THESE INSTRUCTIONS FOR FUTURE REFERENCE.

Definitions: Safety Alert Symbols and Words

This instruction manual uses the following safety alert symbols and words to alert you to hazardous situations and your risk of personal injury or property damage.

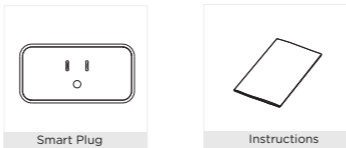
- DANGER:** Indicates an imminently hazardous situation which, if not avoided, **will** result in **death or serious injury**.
- WARNING:** Indicates a potentially hazardous situation which, if not avoided, **could** result in **death or serious injury**.
- CAUTION:** Indicates a potentially hazardous situation which, if not avoided, **may** result in **minor or moderate injury**. (Used without word) Indicates a safety related message.
- NOTICE:** Indicates a practice not related to personal injury which, if not avoided, **may** result in **property damage**.
- WARNING:** PLEASE READ THIS INSTRUCTION MANUAL THOROUGHLY AND COMPLETELY BEFORE INSTALLATION & USE. FAILURE TO DO SO COULD CAUSE DAMAGE TO PROPERTY, SERIOUS INJURY OR DEATH, AND VOID YOUR WARRANTY.

WARNING: Cancer and Reproductive Harm - www.P65Warnings.ca.gov.
Avertissement: Cancer et Troubles de l'appareil reproducteur - www.P65Warnings.ca.gov.
Advertencia: Cáncer y Daño Reproductivo - www.P65Warnings.ca.gov.
For California residents / Pour les résidents de la Californie / Para residentes en California

Indoor Wi-Fi Smart Plug

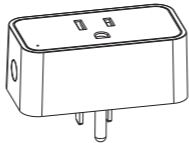
WHAT'S IN THE BOX

Please consult this checklist for all parts.



WARNING:

- For safety, always switch off your appliances before connecting.
- For indoor use only.
- Whenever you change a Wi-Fi network, reconnection is required.
- Do not plug in and out the device continually. Always wait for an interval of 10 seconds.



DESCRIPTION

Status light

- Blinking light: awaiting WiFi connection
- Led light on: device is on

Reset

Press and hold the reset button for 5 seconds to restore to factory defaults.

Indoor Wi-Fi Smart Plug

CONNECT

Download

Link2Home Pro is available for both iOS and Android OS. Search the name 'Link2Home Pro' in the App Store or Android Market, or scan the QR code below to download the App.

Support



Download App(iOS&android)

Set up router

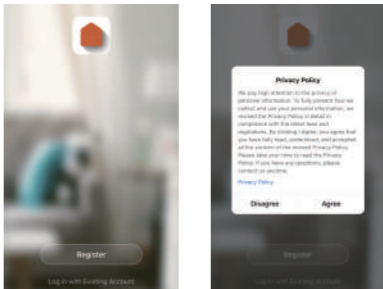
This device supports 2.4GHz frequency's only. It does not support 5GHz. Most household routers are dual band and so you should not need to change your routers settings. If however you do not have a dual band router please select an appropriate 2.4GHz network before WiFi configuration. When you set up your device ensure your mobile device, router and Link2Home device are as close as possible. You can move the device after set up.



Indoor Wi-Fi Smart Plug

Registration process

Step 1 Open the Link2Home Pro App, click "Register", read the "Privacy Policy" and click "Agree" .



Step 2 Input a valid email address and click continue. Then enter the verification code from your email back into the App. (check you junk folder).



Indoor Wi-Fi Smart Plug

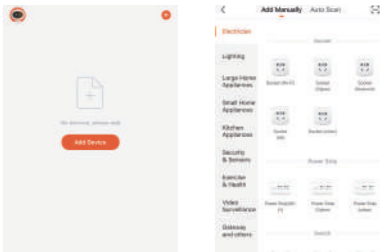
ADD A DEVICE MANUALLY

Getting started

- Please follow the instructions and make sure the passwords are input correctly.
- One device can only be added with one App account, if the device has been added with another account already, then it can't be added to any other account again. Devices can be shared with other users in the Home Management settings.
- If the device has been added to another account it will need to be removed first. After the device has been removed it will reset automatically and the status light will change from solid blue to flashing red.

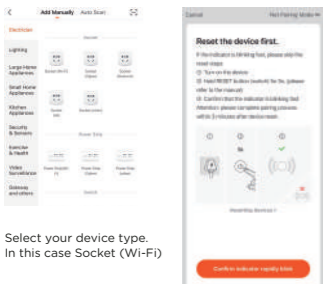
Process

Step 1 Open the Link2Home Pro App, click "+" (in the upper right hand corner of the screen) or "Add Device". Then select "Add Manually".

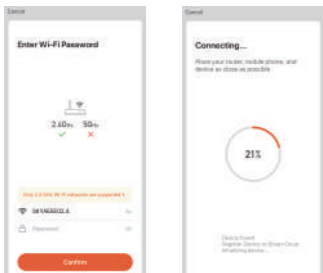


Step 2 Select "Electrician". Power the device on and make sure the blue indicator is flashing quickly. If you do not see a flashing blue light press and hold the reset button for 5 seconds.

Indoor Wi-Fi Smart Plug

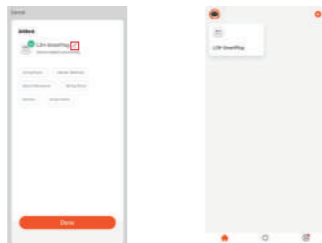


Step 3 Your device WiFi network will be the default network displayed. Simply add your WiFi password or choose another network. After confirming your password hit confirm and your device will connect.

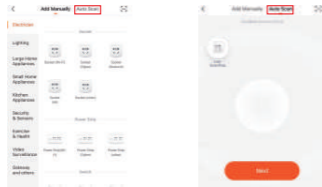


Indoor Wi-Fi Smart Plug

Step 4 The device is added, and the device nickname can also be changed in this interface.



USE THE AUTO SCAN FEATURE TO ADD A PRODUCT



Choose the Auto Scan Feature from the add device screen

The Auto Scan feature will scan your local network for searching devices. Ensure the device is in scan mode (Step 2) and ensure you have the correct Wi-Fi network selected. You can change the Wi-Fi network by clicking Modify Wi-Fi config. When the device or devices are found you will see them on your screen. Then complete the set up from Step 4.

Indoor Wi-Fi Smart Plug

FUNCTIONS

- Control you devices from anywhere using your phone with the Smart Plug. You can turn devices on/off, check status, create schedules and set timers using the Link2Home Pro App.
- Add voice control to any plugged device by pairing with Amazon Alexa and Google Assistant.
- Manually turn your plug on or off using the switch.
- Set up a Timer.
- Set up a Smart Setting.

Smart settings allow you to group devices together and set up various triggers such as time of day, location and be triggered by other devices.

- Tap Smart button on the first page to enter Smart scene page
- Tap "+" on the top right to enter setting page
- You can set your personal routine scene control here

Specifications

125V~60Hz, 15A, 1875W (Resistive), 1250W (Tungsten)
Frequency: 2.4GHz (meets the requirements of IEEE802.11/b/g/n standard)

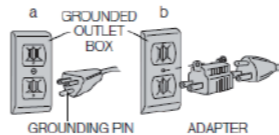
Indoor Wi-Fi Smart Plug

GROUNDING INSTRUCTIONS

In the event of malfunction or breakdown, grounding provides a path of least resistance for electric current to reduce the risk of electric shock. The plug must be connected to a cord having an equipment-grounding conductor and a grounding plug. The plug must be plugged into an appropriate outlet that is properly installed and grounded in accordance with all local codes and ordinances.

DANGER: Improper connection of the equipment grounding conductor can result in a risk of electric shock. The conductor with insulation having an outer surface that is green with or without yellow stripes is the equipment grounding conductor. If repair or replacement of the cord or plug is necessary, do not connect the equipment-grounding conductor to a live terminal. Check with a qualified electrician or service person if the grounding instructions are not completely understood, or if in doubt as to whether the plug is properly grounded. Do not modify the plug connected to the plug - if it will not fit the outlet, have a proper outlet installed by a qualified electrician.

FOR GROUNDED, CORD-CONNECTED PLUG RATED LESS THAN 15A AND INTENDED FOR USE ON A NOMINAL 125V SUPPLY CIRCUIT The plug is for use on a nominal 125V circuit, and should be connected to a grounding outlet that looks like that illustrated in sketch a. A temporary adaptor, which looks like the adaptor illustrated in sketch b, may be used to connect this plug to a 2-pole receptacle as shown in sketch b if a properly grounded outlet is not available. The temporary adaptor should be used only until a properly grounded outlet can be installed by a qualified electrician. The green colored rigid ear, lug, and the like, extending from the adaptor must be connected to a permanent ground such as a properly grounded outlet box cover. Whenever the adaptor is used, it must be held in place by the metal screw.



NOTE: IN CANADA, THE USE OF A TEMPORARY ADAPTOR IS NOT PERMITTED BY THE CANADIAN ELECTRICAL CODE. Ensure that the timer is connected to an outlet having the same configuration as the plug.

Indoor Wi-Fi Smart Plug

FCC CAUTION

This device complies with part 15 of the FCC Rules. Operation is subject to the following two conditions: (1) This device may not cause harmful interference, and (2) this device must accept any interference received, including interference that may cause undesired operation. Any changes or modifications not expressly approved by the party responsible for compliance could void the user's authority to operate the equipment.

Note: This equipment has been tested and found to comply with the limits for a Class B digital device, pursuant to part 15 of the FCC Rules. These limits are designed to provide reasonable protection against harmful interference in a residential installation. This equipment generates, uses and can radiate radio frequency energy and, if not installed and used in accordance with the instructions, may cause harmful interference to radio communications. However, there is no guarantee that interference will not occur in a particular installation. If this equipment does cause harmful interference to radio or television reception, which can be determined by turning the equipment off and on, the user is encouraged to try to correct the interference by one or more of the following measures:

- Reorient or relocate the receiving antenna.
 - Increase the separation between the equipment and receiver.
 - Connect the equipment into an outlet on a circuit different from that to which the receiver is connected.
 - Consult the dealer or an experienced radio/TV technician for help.
- The equipment complies with FCC radiation exposure limits set forth for an uncontrolled environment. The equipment should be installed and operated with minimum distance 20cm between the radiator and your body.

ISED WARNING:

This device complies with Innovation, Science and Economic Development Canada licence-exempt RSS standard(s). Operation is subject to the following two conditions: (1) this device may not cause interference, and (2) this device must accept any interference, including interference that may cause undesired operation of the device.

Le présent appareil est conforme aux CNR d'Industrie Canada applicables aux appareils radio exempts de licence. L'exploitation n'est autorisée aux deux conditions suivantes : (1) l'appareil ne doit pas produire de brouillage, et (2) l'utilisateur de l'appareil doit accepter tout

Indoor Wi-Fi Smart Plug

brouillage radioélectrique subi, même si le brouillage est susceptible d'en compromettre le fonctionnement.

This Class B digital apparatus complies with Canadian ICES-003. Cet appareil numérique de la classe B est conforme à la norme NMB-003 du Canada.

Les communications effectuées au moyen de cet appareil ne sont pas nécessairement protégées des indiscretions.

The equipment complies with FCC radiation exposure limits set forth for an uncontrolled environment. The equipment should be installed and operated with minimum distance 20cm between the radiator and your body. Déclaration d'exposition aux radiations: Cet équipement est conforme aux limites d'exposition aux rayonnements ISÉ Canada établies pour un environnement non contrôlé. Cet équipement doit être installé et utilisé avec un minimum de 20cm de distance entre la source de rayonnement et votre corps.

MANUFACTURER

Ningbo EverFlourish Smart Technology Corp. Ltd.
Address: 77 Wuxiang East Road, Yinzhou, Ningbo, 315111, P.R.China

01 ▶

02 ▶

03 ▶

04 ▶

05 ▶

06 ▶

07 ▶

08 ▶

09 ▶

10 ▶