



# Antenna Measurement sheet

FCC ID: VA5JR561WSS

IC ID: 7087A-R561WSS

2009-10-15



# 1. Schmittchart

## 1.1 S parameter

## 1.2 VSWR

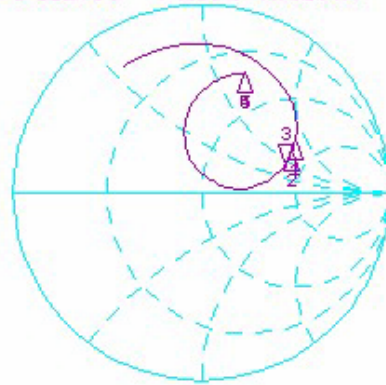
# 2. Radiation Pattern

## 2.1 Gain

# 1. S Parameter, VSWR

13 Oct 2009 19:20:39  
 CH1 S11 1 U FS 3: 115.70  $\Omega$  44.520  $\Omega$  7.7016 nH 920.000 000 MHz

\*  
 De1  
 CA



CH1 Markers

- 1: 101.81  $\Omega$   
82.414  $\Omega$   
910.000 MHz
- 2: 113.32  $\Omega$   
64.875  $\Omega$   
915.000 MHz
- 4: 27.137  $\Omega$   
62.672  $\Omega$   
1.00000 GHz
- 5: 27.137  $\Omega$   
62.672  $\Omega$   
1.00000 GHz

↑

CH2 S11 SWR 1 / REF 1 3: 2.7212 920.000 000 MHz

De1  
 CA



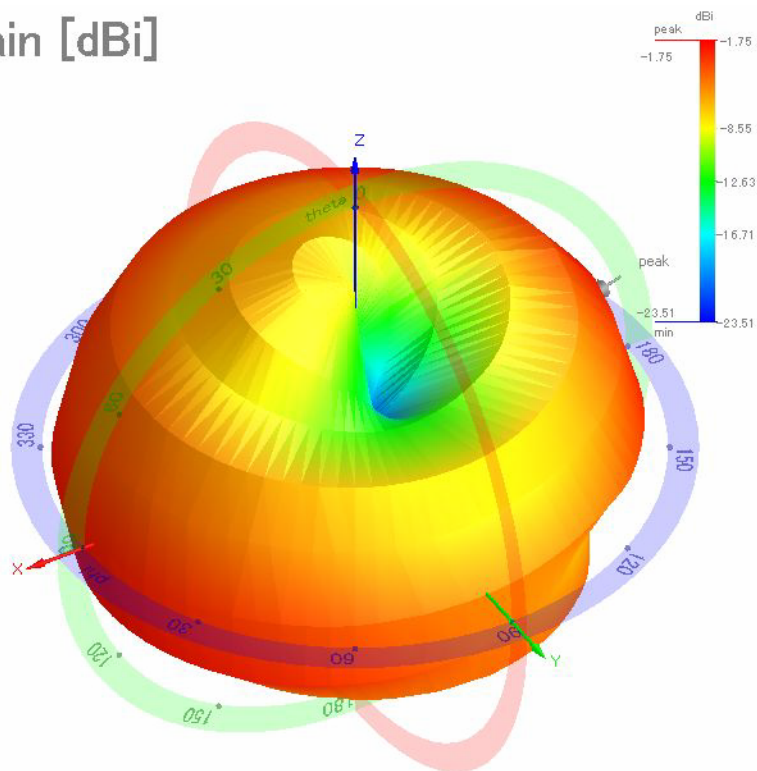
CH2 Markers

- 1: 3.5825  
910.000 MHz
- 2: 3.1310  
915.000 MHz
- 4: 5.0830  
1.00000 GHz
- 5: 5.0830  
1.00000 GHz

↑

## 2. Radiation pattern (Antenna Gain)

Gain [dBi]



Date : 2009-10-15  
 Time : 오후 8:05:36  
 Description :  
 Test Descriptions  
 Calibration : 090707\_700to4GHz D

Frequency [MHz]  
 910.000  
 915.000  
 920.000

Plot Data Type  
 VH Sum  
 Amplitude [dB]  
 Normalization  
 Global Peak

Default Range  
 Range Change  
 Max Amplitude 5

Chart 2D  
 Chart 3D Polar

**PLOT**

Freq. [MHz]	Polarization	Beam Peak			Beam Null			Gain [dBi]	Efficiency
		Value	Phi	Theta	Value	Phi	Theta		
910		-2.372	-160	90	-24.726	305	15	-6.413	22.17%
915		-1.586	-165	90	-23.355	305	15	-5.812	26.23%
920		-1.134	-165	90	-22.673	150	180	-5.231	28.85%