



PROBLEM! ROAD RIPPERS R/C VEHICLE RUNS SLOWLY

- There is radio interference in the area.
- Another R/C vehicle with the same frequency is close by.
- Are the batteries weak or out of power?

PROBLEM? PERFORMANCE DROP, INCONSISTENT MOVEMENT OR FAILS TO RUN

Check batteries. If necessary, replace the batteries in the Road Rippers R/C vehicle and controller with new alkaline batteries.

Call 1-877-473-8015 for help!



OFFICIAL LICENSED PRODUCT

General Motors Trademarks used under license to Toy State Industrial.



Dodge and HEMI are trademarks of Chrysler Group LLC. Dodge Charger Super Bee, Dodge Charger Daytona and their trade dress are used under license by Toy State Industrial LTD. © Chrysler Group LLC 2010

Have Fun - Play Games @ www.toystate.com

For questions, e-mail our Consumer Service Dept. at consumerservice@toystate.com
Or Call 1-877-473-8015



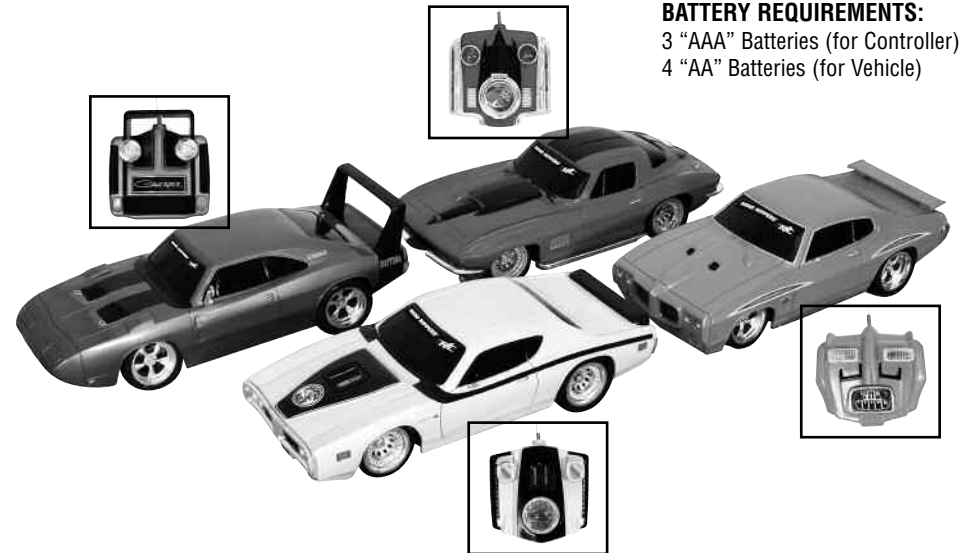
MADE IN SHENZHEN, CHINA
TOY STATE INTERNATIONAL LIMITED
1 PEKING ROAD, KOWLOON, HONG KONG

IN THE INTEREST OF BETTER QUALITY AND VALUE, WE ARE CONSTANTLY IMPROVING AND UPDATING OUR PRODUCTS. CONSEQUENTLY, PICTURES IN THIS INSTRUCTION SHEET MAY SOMETIMES DIFFER FROM THE MODEL ENCLOSED.



RADIO CONTROL MOTOR MUSCLE™

OWNER'S MANUAL



BATTERY REQUIREMENTS:
3 "AAA" Batteries (for Controller)
4 "AA" Batteries (for Vehicle)

Call for Help!

If you have questions about this toy

Call Toll-Free: **1-877-473-8015**

Between 9:00 a.m. – 5:00 p.m. E.S.T. Monday thru Friday

Contact via e-mail: consumerservice@toystate.com

www.toystate.com

MANUFACTURERS NOTE

“Modifications not authorized by the manufacturer may void users authority to operate the device.”

CAUTION

Important Battery Information

- Dispose of batteries properly.
- Do not dispose of batteries in fire.
- Use only batteries of the type recommended.
- Do not mix alkaline, standard (carbon-zinc) or rechargeable (nickel-cadmium) batteries.
- Do not mix old and new batteries.
- Remove batteries from Road Rippers R/C Vehicle and Controller if vehicle will not be used for a long period of time.

FEDERAL COMMUNICATIONS COMMISSION COMPLIANCE

NOTE:

This equipment has been tested and found to comply with the limits for a Class B digital device, pursuant to Part 15 of the FCC Rules. These limits are designed to provide reasonable protection against harmful interference in a residential installation. This equipment generates, uses and can radiate radio frequency energy and, if not installed and used in accordance with the instructions, may cause harmful interference to radio communications. However, there is no guarantee that interference will not occur in a particular installation. If this equipment does cause harmful interference to radio or television reception, which can be determined by turning the equipment off and on, the user is encouraged to try to correct the interference by one or more of the following measures:

- Reorient or relocate the receiving antenna.
- Increase the separation between the equipment and receiver.
- Consult the dealer or an experienced radio/TV technician for help.

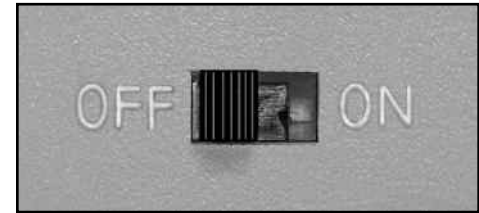
ATTENTION PARENTS

This toy and all accessories need to be periodically examined for potential hazards and any potentially hazardous parts be repaired or replaced.

TIPS & TRICKS

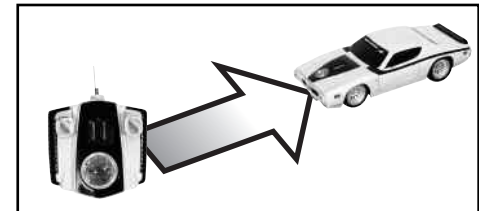
STRONG BATTERY MEANS OPTIMUM PERFORMANCE

Save the battery by turning off vehicle when not in use.



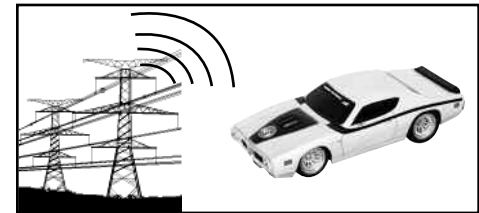
LIMITED RADIO CONTROL RANGE

While Road Rippers R/C vehicle may be visible at a distance, full operational control may be lost. Hold controller high in the air and direct vehicle back.



INTERFERENCE

Other radio signals may cause loss of control. Remove vehicle from an area of interference.



TROUBLESHOOTING AND CARE FOR R/C VEHICLES

PROBLEM! ROAD RIPPERS R/C VEHICLE DOES NOT MOVE

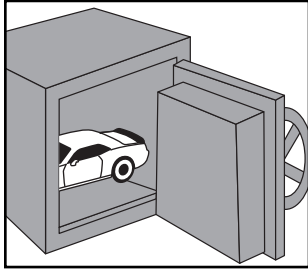
- Are the + and –'s contacts correctly matched in the controller?
- Are the metal contact tabs touching, rusty or dirty in controller?
- Are there batteries in the vehicle and controller?
- Is the power switch turned on?
- Are the batteries weak or out of power?

PROBLEM! ROAD RIPPERS R/C VEHICLE MOVES BY ITSELF

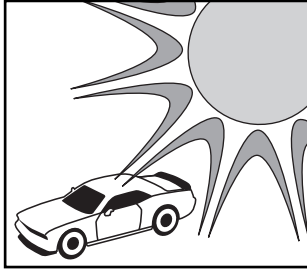
- There is radio interference in the area.
- Another R/C vehicle with the same frequency is close by.

TREAT YOUR ROAD RIPPERS R/C VEHICLE WELL

Radio waves control the Road Rippers R/C vehicle. Care for your vehicle and it will provide hours of fun!
Avoid water, heat, sand and high impact crashes!



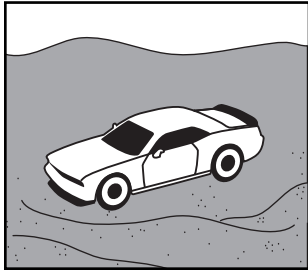
Store in safe place.



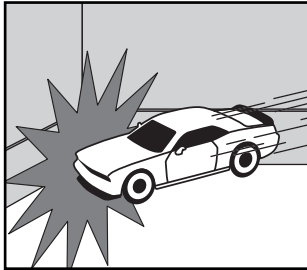
No direct sunlight.



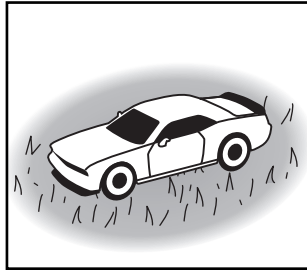
No rain or water.



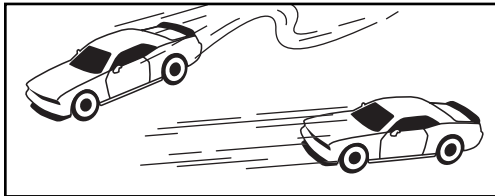
No sand or dust.



No Collisions.



Road Rippers R/C vehicle may get stuck on carpet or grass.



Avoid running 2 vehicles with the same radio control frequencies.

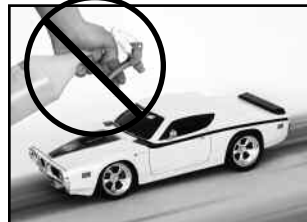
CLEANING AND MAINTAINING



Brush areas where dirt and dust get trapped.



Wipe body off with a soft rag or tact cloth.

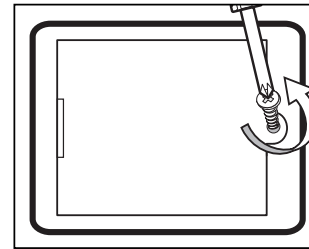


Do not clean vehicle with chemicals or water.

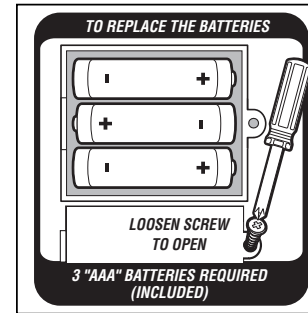
GETTING STARTED

Remove the Road Rippers R/C vehicle and controller from the box. For best performance, replace the 3 “AAA” batteries in the controller with 3 new “AAA” batteries. Add 4 “AA” batteries into the Road Rippers R/C vehicle to begin full function play (see “Battery Installation” section for further details).

BATTERY INSTALLATION IN CONTROLLER

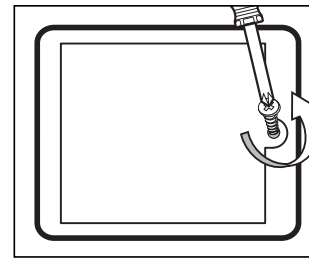


1. To remove battery cover, loosen screw to open.

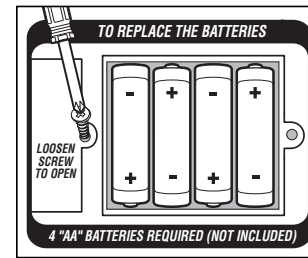


2. For best performance, replace 3 “AAA” batteries with 3 new “AAA” batteries. Be sure the + and – are properly matched.

BATTERY INSTALLATION IN ROAD RIPPERS R/C VEHICLE



1. To remove battery cover, loosen screw to open.



2. Insert 4 “AA” batteries into the Vehicle. Be sure the + and – are properly matched.

NOTE:

For best performance, always use alkaline batteries only.

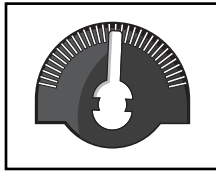
QUICK START GUIDE

- Install batteries in Road Rippers R/C vehicle and controller.
- Learn function of controller.
- Enjoy!

OPERATING ROAD RIPPERS R/C VEHICLE



Turn ON/OFF switch (on bottom of Road Rippers R/C vehicle) to the ON position (as shown.)



Adjust Trim Switch (on the bottom of Road Rippers R/C vehicle) to ensure precision driving

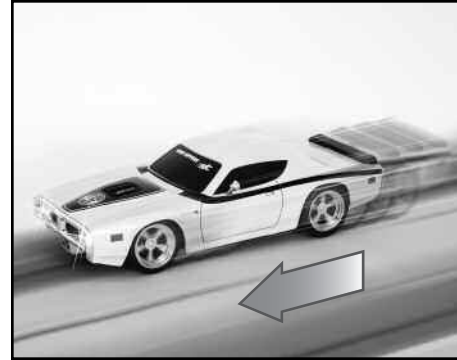
Refer To Controller Diagram For Full Function Play

- On the controller, push forward on joystick **1** to drive forward and activate lights and sounds, hold back to drive in reverse
- Hold left on joystick **2** to turn left, hold right to turn right
- Button 3 activates music specialized for each vehicle

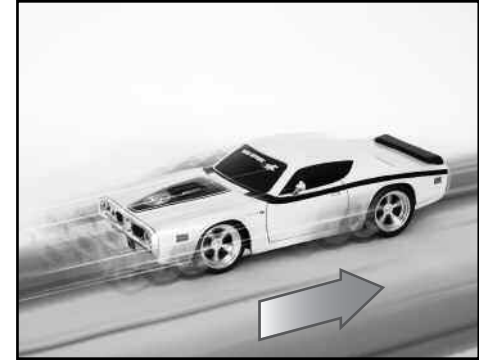


After play, always turn vehicle off. Remove batteries from controller and Road Rippers R/C vehicle when not in use or when storing. Leakage may occur and cause damage if left for a long period of time.

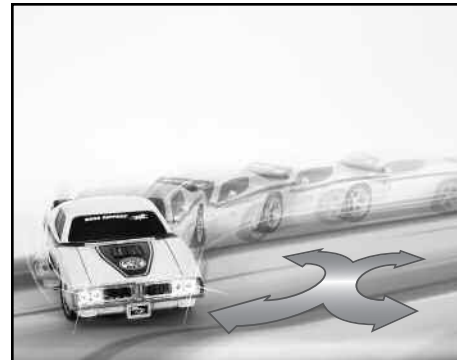
ROAD RIPPERS R/C VEHICLE FEATURES



Forward Action!



Reverse Action!



Turns Left or Right in Forward and Reverse



Handheld Sounds